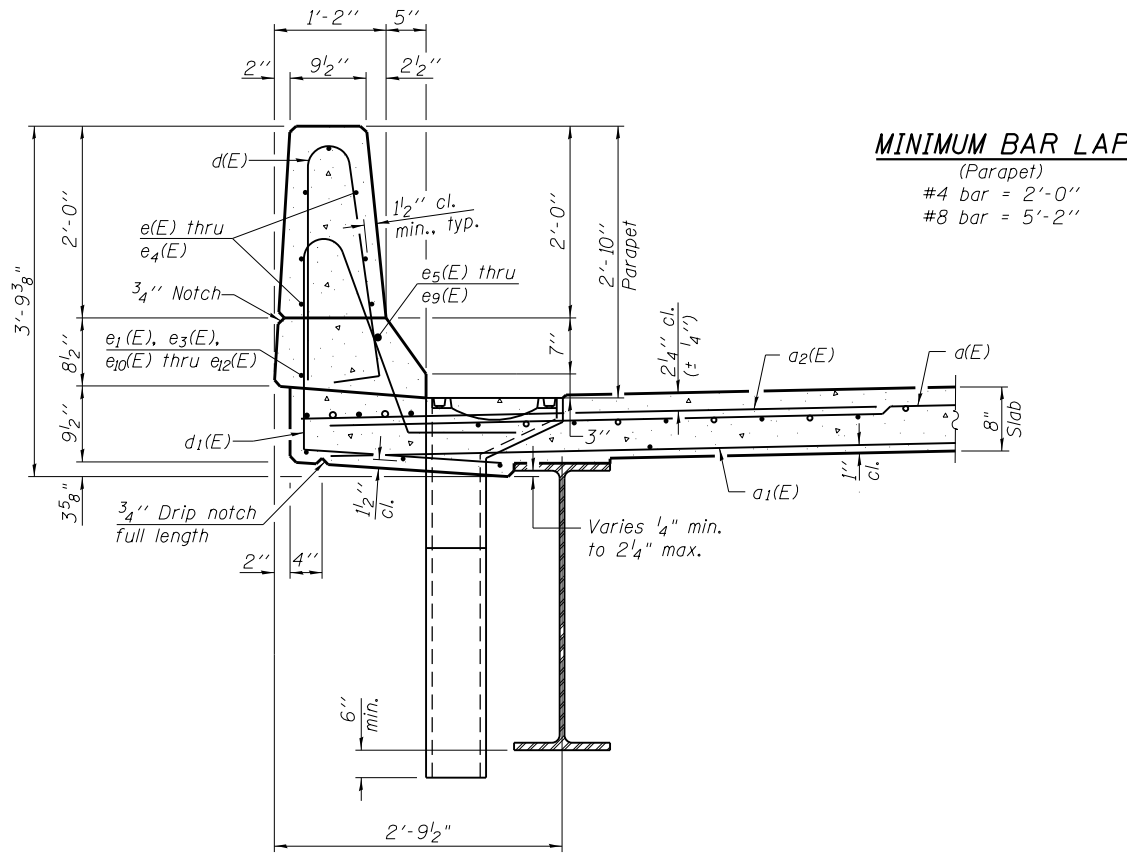
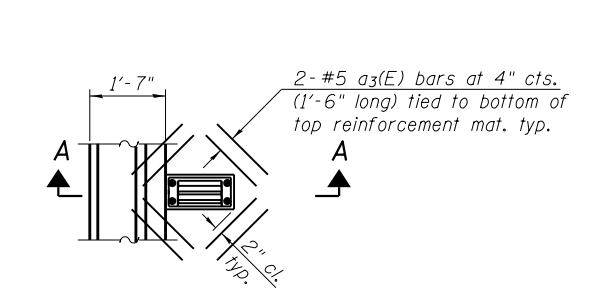


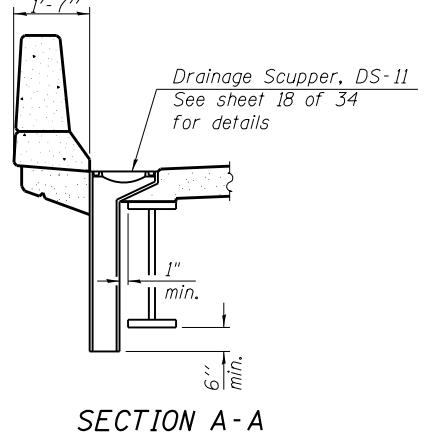
INSIDE ELEVATION OF PARAPET
(Looking north-south parapet similar)



SECTION THRU PARAPET

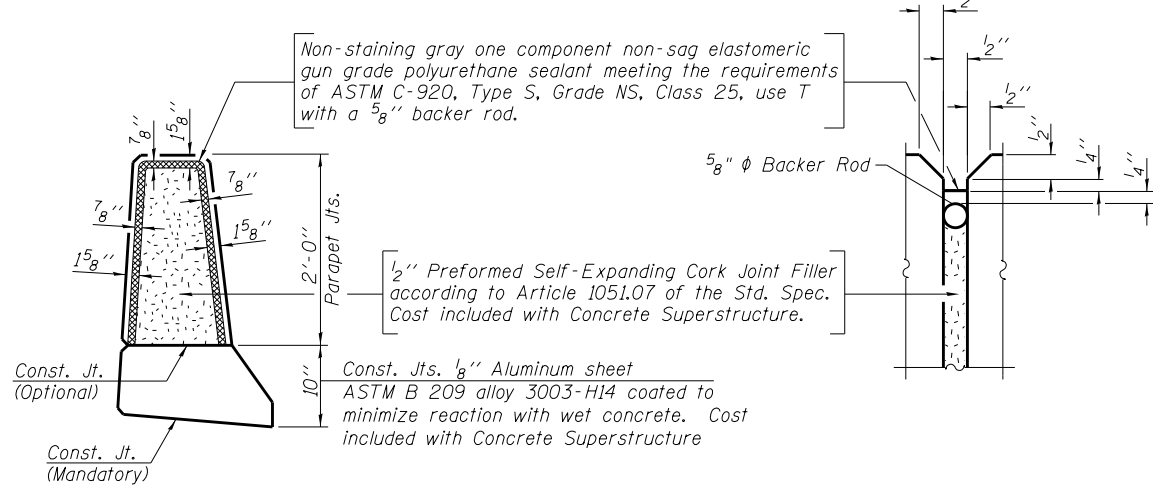


PLAN AT SCUPPER
Note: Cut longitudinal reinforcement to clear drainage scuppers.

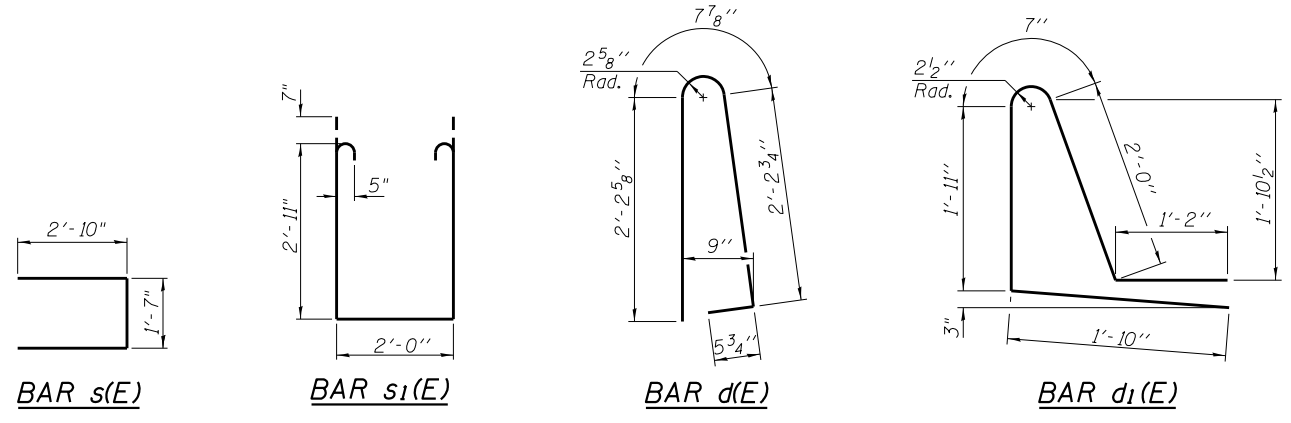


SECTION A-A

MINIMUM BAR LAP
(Parapet)
#4 bar = 2'-0"
#8 bar = 5'-2"



PARAPET JOINT DETAILS



SUPERSTRUCTURE BILL OF MATERIAL

Bar	No.	Size	Length	Shape
a(E)	1228	#5	17'-1"	—
a1(E)	860	#5	16'-9"	—
a2(E)	1228	#6	6'-6"	—
a3(E)	32	#5	1'-6"	—
b(E)	456	#5	32'-2"	—
b1(E)	68	#6	45'-0"	—
b2(E)	352	#5	34'-10"	—
b3(E)	68	#6	35'-8"	—
d(E)	780	#5	5'-7"	⌋
d1(E)	780	#5	7'-6"	⌋
e(E)	112	#4	15'-3"	—
e1(E)	64	#4	10'-2"	—
e2(E)	84	#4	16'-10"	—
e3(E)	64	#4	8'-2"	—
e4(E)	42	#4	17'-6"	—
e5(E)	8	#8	33'-9"	—
e6(E)	8	#8	10'-2"	—
e7(E)	8	#8	28'-3"	—
e8(E)	8	#8	8'-2"	—
e9(E)	4	#8	29'-3"	—
e10(E)	12	#4	22'-2"	—
e11(E)	8	#4	26'-9"	—
e12(E)	4	#4	27'-7"	—
m(E)	16	#6	17'-3"	—
m1(E)	30	#6	5'-7"	—
m2(E)	12	#6	2'-5"	—
m3(E)	36	#5	4'-0"	—
s(E)	72	#5	7'-3"	⌋
s1(E)	64	#5	9'-0"	⌋
Reinforcement Bars, Epoxy Coated			Pound	103,700
Concrete Superstructure			Cu. Yds.	425.9

Bars indicated thus 1 x 2-#8 etc. indicates 1 line of bars with 2 lengths per line.