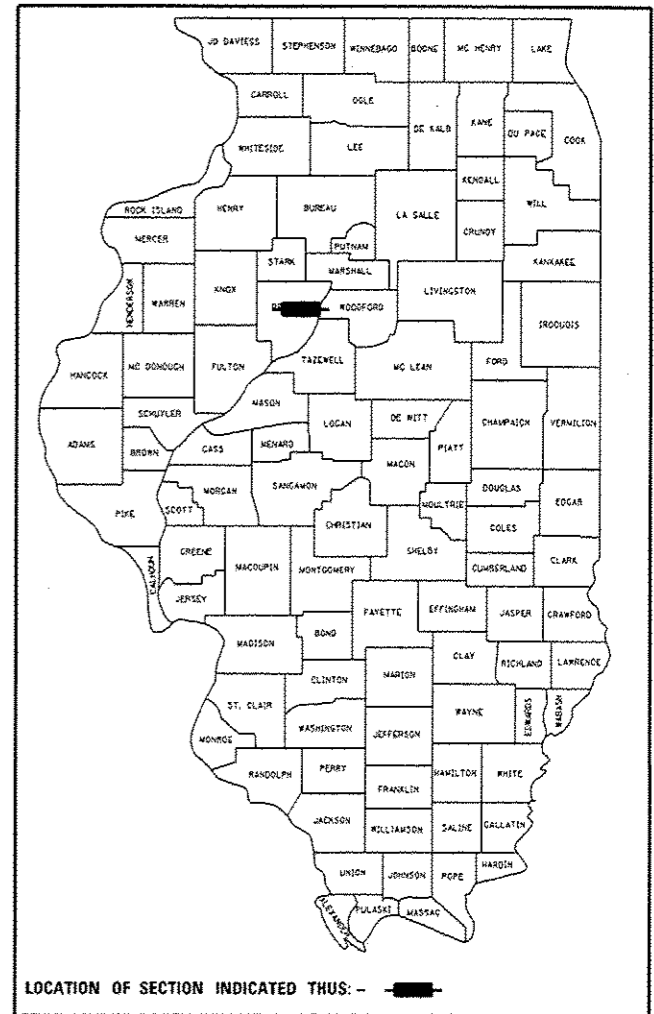


F.A.P. RTE.	SECTION	COUNTY	TOTAL SHEETS	SHEET NO.
318		PEORIA	7	1
		ILLINOIS	CONTRACT NO. 68B76	

*72-[(7,7-2,7-3)I-2;(6-1)I-3]

D-94-018-14



STATE OF ILLINOIS

DEPARTMENT OF TRANSPORTATION

DIVISION OF HIGHWAYS

PROPOSED HIGHWAY PLANS

FAP ROUTE 318 (IL 6)
SECTION 72-[(7,7-2,7-3)I-2;(6-1)I-3]

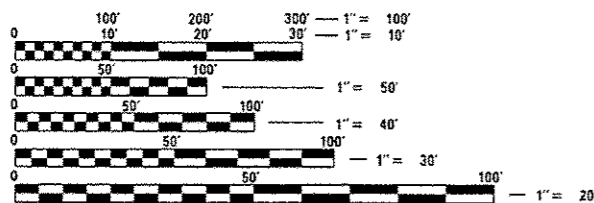
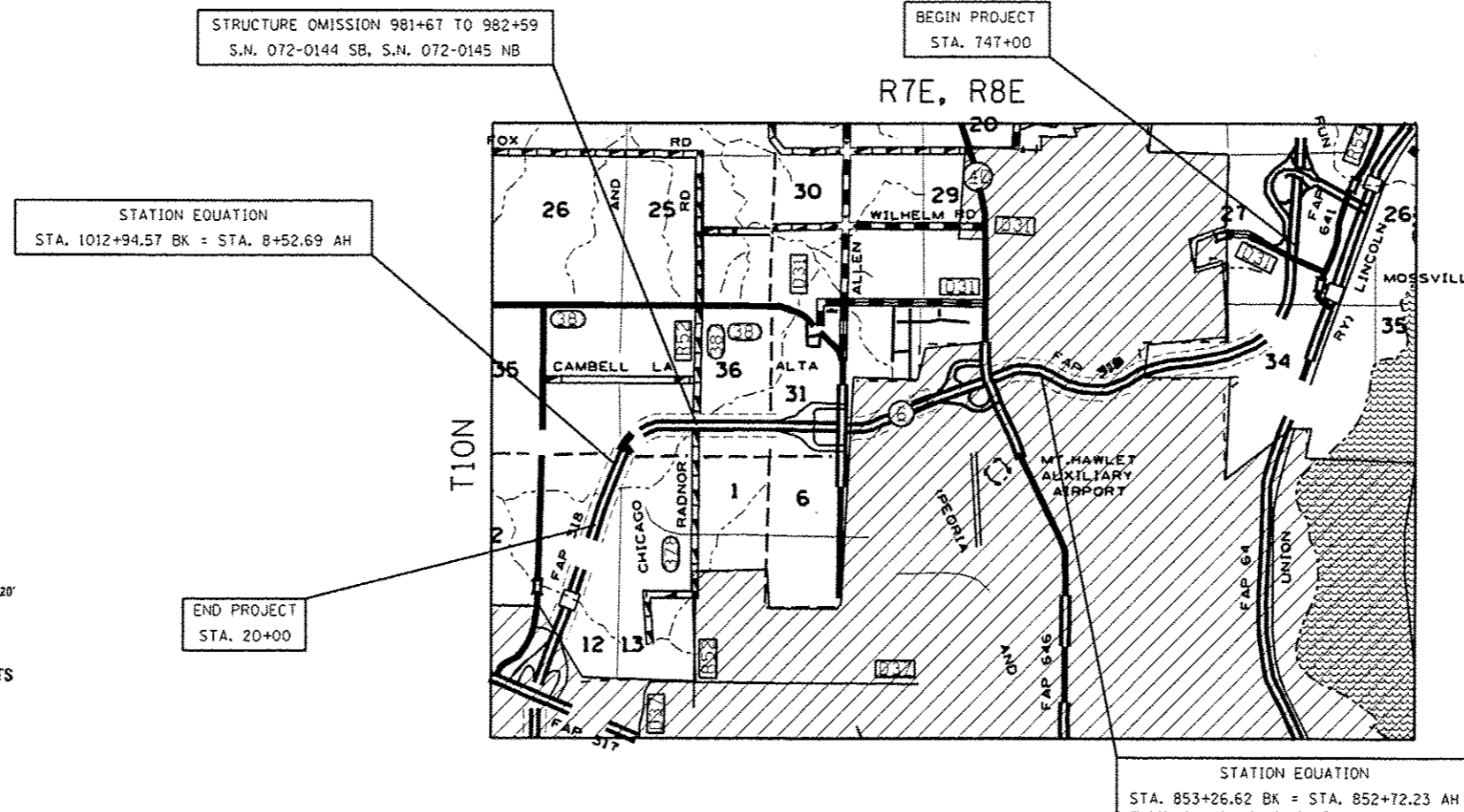
PEORIA COUNTY
C-94-074-14

INDEX OF SHEETS

- 1 COVER SHEET /INDEX OF SHEETS /HIGHWAY STANDARDS
- 2 COMMITMENTS AND GENERAL /PROJECT SPECIFIC NOTES
- 3-4 SUMMARY OF QUANTITIES
- 5 TYPICAL SECTIONS
- 6 SCHEDULE OF QUANTITIES
- 7 LINE DIAGRAM

HIGHWAY STANDARDS

- 421001-02 701401-08
- 442001-04 701411-08
- 442101-07 701428
- 701101-04 701901-03
- 701400-07



FULL SIZE PLANS HAVE BEEN PREPARED USING STANDARD ENGINEERING SCALES. REDUCED SIZED PLANS WILL NOT CONFORM TO STANDARD SCALES. IN MAKING MEASUREMENTS ON REDUCED PLANS, THE ABOVE SCALES MAY BE USED.

J.U.L.I.E.
JOINT UTILITY LOCATION INFORMATION FOR EXCAVATION
1-800-892-0123
OR 811

PROJECT ENGINEER: RICH DOTSON (309) 671-3455
DESIGN ENGINEER: MIKE JACOBS (309) 671-3474
CONTRACT NO. 68B76
CATALOG NO. 035109-00D

GROSS LENGTH = 27721 FT. = 5.25 MILE
NET LENGTH = 27721 FT. = 5.25 MILE

PROJECT DESCRIPTION:

CLASS A AND B PATCHING ON IL 6 FROM SOUTH OF MOSSVILLE RD TO 1.4 MILES NORTH OF US 150

STATE OF ILLINOIS
DEPARTMENT OF TRANSPORTATION
DIVISION OF HIGHWAYS

SUBMITTED 0409 20 14

Barbara Sames
DEPUTY DIRECTOR OF HIGHWAYS, REGION ENGINEER

May 9 20 14
John D. Baranzelli, P.E.
ENGINEER OF DESIGN AND ENVIRONMENT

May 9 20 14
Orer Osman, P.E.
DIRECTOR OF HIGHWAYS, CHIEF ENGINEER

PRINTED BY THE AUTHORITY
OF THE STATE OF ILLINOIS