

F.A.I. RTE.	SECTION	COUNTY	TOTAL SHEETS	SHEET NO.
39	(57-3,57-4)RS	MCLEAN	94	1
ILLINOIS		CONTRACT NO. 70A20		

STATE OF ILLINOIS
DEPARTMENT OF TRANSPORTATION
DIVISION OF HIGHWAYS

PROPOSED
HIGHWAY PLANS

F.A.I. ROUTE 39 (I-39)
SECTION (57-3,57-4)RS
PROJECT ACNHPP-0039 (038)
RESURFACING (INT-1ST)
MCLEAN COUNTY

FOR INDEX OF SHEETS, SEE SHEET NO. 2
FOR SUMMARY OF QUANTITIES, SEE SHEET NO. 7 THROUGH 12

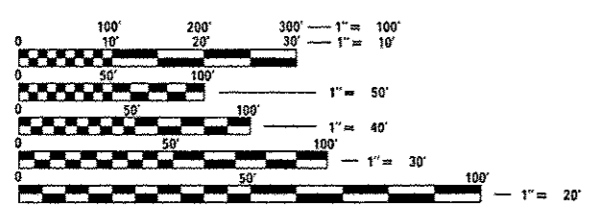
CURRENT TRAFFIC DATA				
	LEG "A"	LEG "B"	LEG "C"	
2013 ADT	18,500	18,600	16,200	
P.U. %	66.0	69.0	64.6	
S.U. %	5.9	5.1	4.7	
M.U. %	28.1	25.9	30.7	

LEG "A" IS FROM SIX MILE CREEK TO FAS 472.
LEG "B" IS FROM FAS 472 TO IL 251.
LEG "C" IS FROM IL 251 TO WOODFORD COUNTY LINE.



C-95-006-13
SIX MILE CREEK SW OF HUDSON TO WOODFORD COUNTY LINE

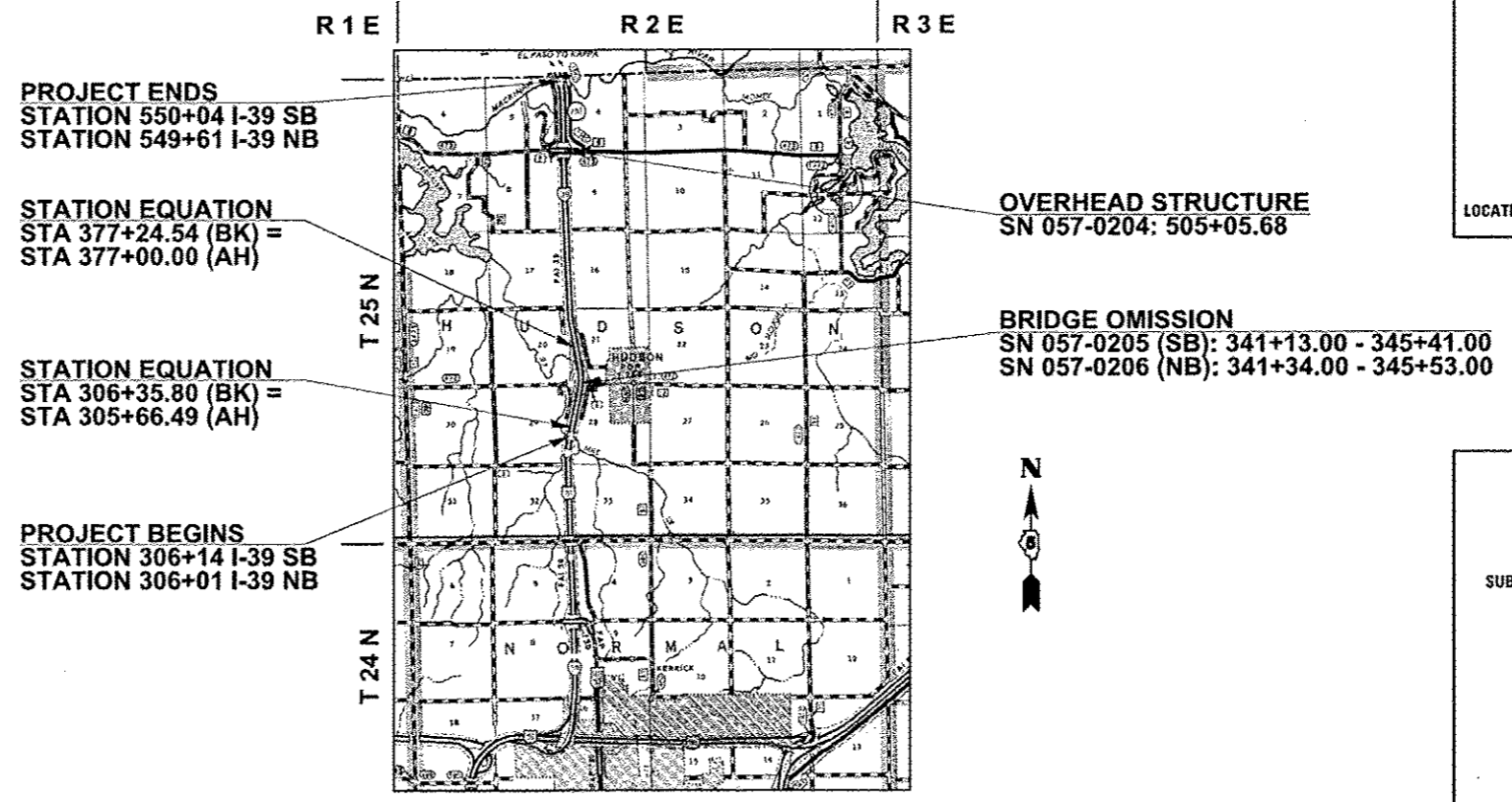
DESIGN DESIGNATION
N/A



FULL SIZE PLANS HAVE BEEN PREPARED USING STANDARD ENGINEERING SCALES. REDUCED SIZED PLANS WILL NOT CONFORM TO STANDARD SCALES. IN MAKING MEASUREMENTS ON REDUCED PLANS, THE ABOVE SCALES MAY BE USED.

J.U.L.I.E.
JOINT UTILITY LOCATION INFORMATION FOR EXCAVATION
1-800-892-0123 (HUDSON TOWNSHIP)
OR 811

PROJECT ENGINEER: NANCY FASIG
SQUAD LEADER: BRIAN J. HOGAN
DESIGNER: ANDREW BERGAN
(217) 465-4181
CONTRACT NO. 70A20



GROSS LENGTH = 24,453.85 FEET = 4.631 MILES
NET LENGTH = 24,034.85 FEET = 4.552 MILES

STATE OF ILLINOIS
DEPARTMENT OF TRANSPORTATION
DIVISION OF HIGHWAYS

SUBMITTED 3-19 20 14

Joseph F. Crowe
DEPUTY DIRECTOR OF HIGHWAYS, REGION ENGINEER *CAF*

May 9 20 14
John D. Baranzolli, RE, PE
ENGINEER OF DESIGN AND ENVIRONMENT

May 9 20 14
Orin Osman, RE, PE
DIRECTOR OF HIGHWAYS, CHIEF ENGINEER

PRINTED BY THE AUTHORITY
OF THE STATE OF ILLINOIS