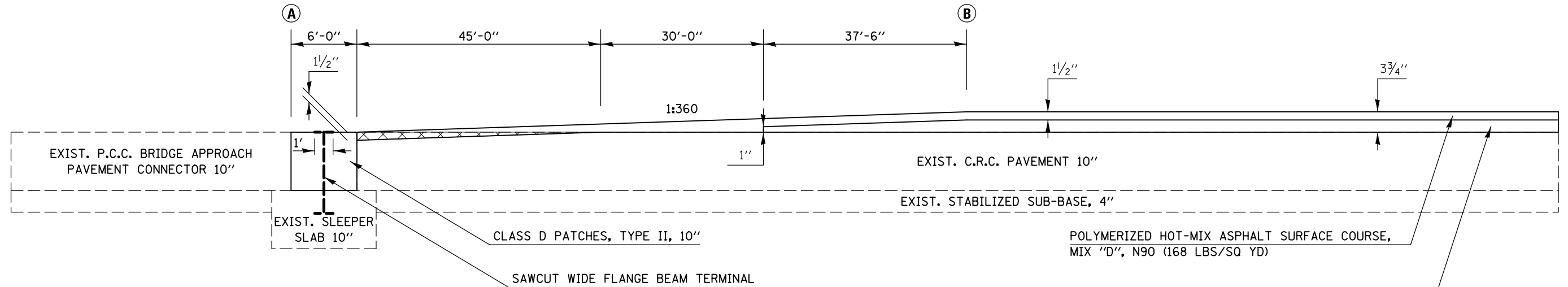


## DETAIL FOR I-39 BUTT JOINTS AND PAVING TRANSITIONS

	<b>(A)</b> <u>STATION</u> SOUTHBOUND <u>TO</u>	<b>(B)</b> <u>STATION</u> (BK)		<b>(A)</b> <u>STATION</u> NORTHBOUND <u>TO</u>	<b>(B)</b> <u>STATION</u>
APPROACH SN 057-0208	306+14.00	306+35.80	APPROACH SN 057-0206	341+34.00	340+15.50
DEPARTURE SN 057-0205	305+66.49 (AH)	306+63.19	DEPARTURE SN 057-0206	345+53.00	346+71.50
APPROACH SN 057-0205	341+13.00	339+94.50	APPROACH SN 057-0203	549+61.00	548+42.50
DEPARTURE SN 057-0203	345+41.00	346+59.50			
	550+04.00	548+85.50			

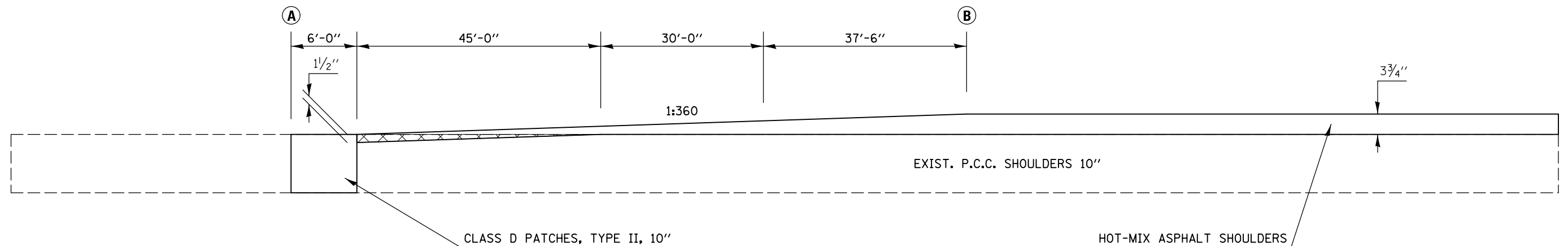


PORTLAND CEMENT CONCRETE SURFACE REMOVAL - BUTT JOINT

NOTE: REMOVAL OF EXISTING WIDE FLANGE BEAM TERMINAL AT TOP OF SLEEPER SLAB SHALL BE INCLUDED IN THE COST OF CLASS D PATCHES

## DETAIL FOR I-39 SHOULDER BUTT JOINTS AND PAVING TRANSITIONS

	<b>(A)</b> <u>STATION</u> SOUTHBOUND <u>TO</u>	<b>(B)</b> <u>STATION</u> (BK)		<b>(A)</b> <u>STATION</u> NORTHBOUND <u>TO</u>	<b>(B)</b> <u>STATION</u>
APPROACH SN 057-0208	306+14.00	306+35.80	APPROACH SN 057-0206	341+34.00	340+15.50
DEPARTURE SN 057-0205	305+66.49 (AH)	306+63.19	DEPARTURE SN 057-0206	345+53.00	346+71.50
APPROACH SN 057-0205	341+13.00	339+94.50	APPROACH SN 057-0203	549+61.00	548+42.50
DEPARTURE SN 057-0203	345+41.00	346+59.50			
	550+04.00	548+85.50			



PORTLAND CEMENT CONCRETE SURFACE REMOVAL - BUTT JOINT