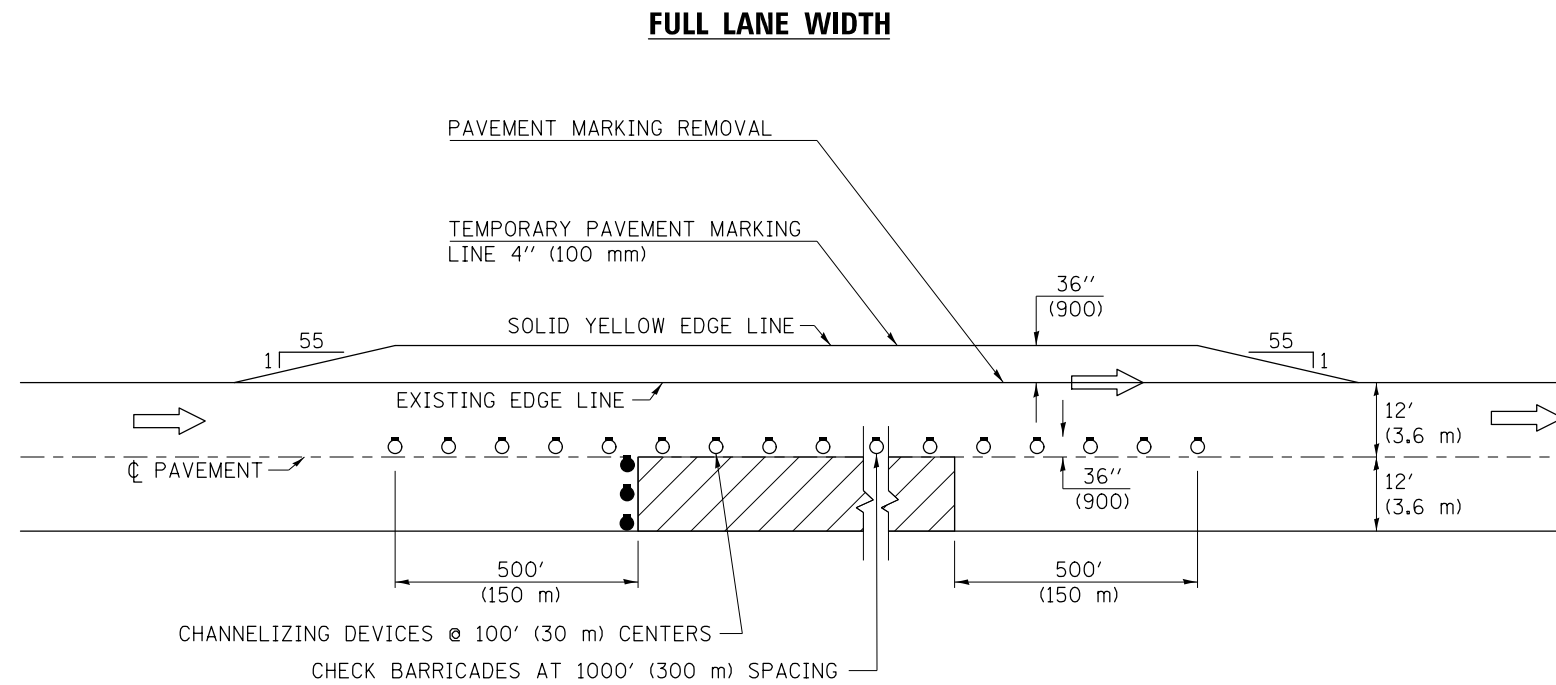


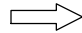
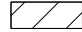


TYPICAL APPLICATIONS DRIVING LANE WORK



TRAFFIC CONTROL DETAILS NOT SHOWN SHALL BE ACCORDING TO TRAFFIC CONTROL STANDARD 701401.

AT RAMPS, THE OVERLAY WORK AREA SHALL BE STAGED TO COORDINATE WITH STANDARD 701411.

PASSING LANE CLOSURES SHALL BE SIMILAR. THE TEMPORARY PAVEMENT MARKING LINE 4" (100 mm) SHALL BE A SOLID WHITE LINE.

SYMBOLS	
	DIRECTION OF TRAVEL
	WORK AREA
	DRUM WITH STEADY BURN MONODIRECTIONAL LIGHT
	HIGH INTENSITY REFLECTORIZED VERTICAL BARRICADE WITH STEADY BURN MONODIRECTIONAL LIGHT

Note: All dimensions are in INCHES (millimeters) unless otherwise shown.

FILE NAME =	USER NAME = bergana.j	DESIGNED -	REVISED -	STATE OF ILLINOIS DEPARTMENT OF TRANSPORTATION	TRAFFIC CONTROL AND PROTECTION, STANDARD 701401 (SPECIAL)	F.A.I. RTE.	SECTION	COUNTY	TOTAL SHEETS	SHEET NO.	
		DRAWN -	REVISED -			39	(57-3,57-4)RS	MCLEAN	94	46	
	PLOT SCALE = 40.0000' / in.	CHECKED -	REVISED -			CONTRACT NO. 70A20					
	PLOT DATE = 3/18/2014	DATE -	REVISED -			ILLINOIS FED. AID PROJECT					
					SCALE:	SHEET OF SHEETS		STA. TO STA.			