

STATE OF ILLINOIS
DEPARTMENT OF TRANSPORTATION
DIVISION OF HIGHWAYS

PROPOSED
HIGHWAY PLANS

F.A.P. 317 & F.A.P. 322
(US 24 & US 51)
SECTION D5 PATCHING 2014-1
PATCHING
MCLEAN & DEWITT COUNTY

C-95-025-13

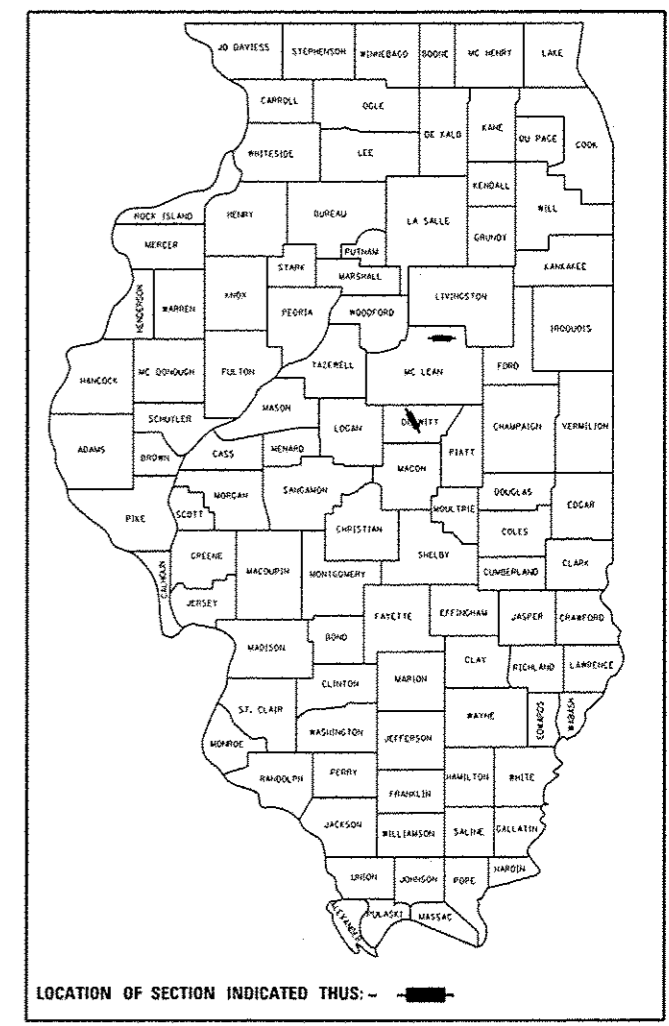
VARIOUS LOCATIONS IN MCLEAN AND DEWITT COUNTIES

SEE SHEET NO. 3 FOR LOCATION MAPS

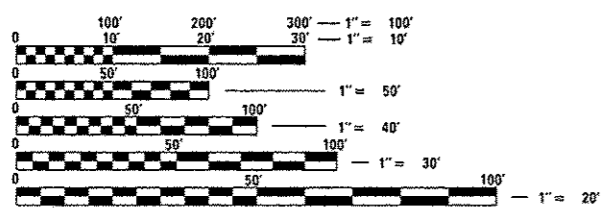
F.A.P. RTE.	SECTION	COUNTY	TOTAL SHEETS	SHEET NO.
**	D5 PATCHING 2014-1	ILLINOIS	6	1
			CONTRACT NO. 70A34	

• MCLEAN & DEWITT COUNTIES
• FAP 317 & FAP 322

D-95-025-13



FOR INDEX OF SHEETS, SEE SHEET NO. 2
FOR SUMMARY OF QUANTITIES, SEE SHEET NO. 4



FULL SIZE PLANS HAVE BEEN PREPARED USING STANDARD ENGINEERING SCALES. REDUCED SIZED PLANS WILL NOT CONFORM TO STANDARD SCALES. IN MAKING MEASUREMENTS ON REDUCED PLANS, THE ABOVE SCALES MAY BE USED.

J.U.L.I.E.
JOINT UTILITY LOCATION INFORMATION FOR EXCAVATION
1-800-892-0123
OR 811

PROJECT ENGINEER – JASON STULTS
PROJECT MANAGER – GREG ROBINSON
Phone Number: (217)465-4181
CONTRACT NO. 70A34

STATE OF ILLINOIS
DEPARTMENT OF TRANSPORTATION
DIVISION OF HIGHWAYS

SUBMITTED 0319 20 14

Joseph E. Crowe (MAG)
DEPUTY DIRECTOR OF HIGHWAYS, REGION ENGINEER
May 9 20 14

John D. Baranzelli (P.E.)
ENGINEER OF DESIGN AND ENVIRONMENT
May 9 20 14

Omar Osman (P.E.)
DIRECTOR OF HIGHWAYS, CHIEF ENGINEER

PRINTED BY THE AUTHORITY
OF THE STATE OF ILLINOIS