

STATE OF ILLINOIS
DEPARTMENT OF TRANSPORTATION
DIVISION OF HIGHWAYS

**PROPOSED
HIGHWAY PLANS**

F.A.P. 317 & F.A.P. 322
(US 24 & US 51)
SECTION D5 PATCHING 2014-1
PATCHING
MCLEAN & DEWITT COUNTY

C-95-025-13

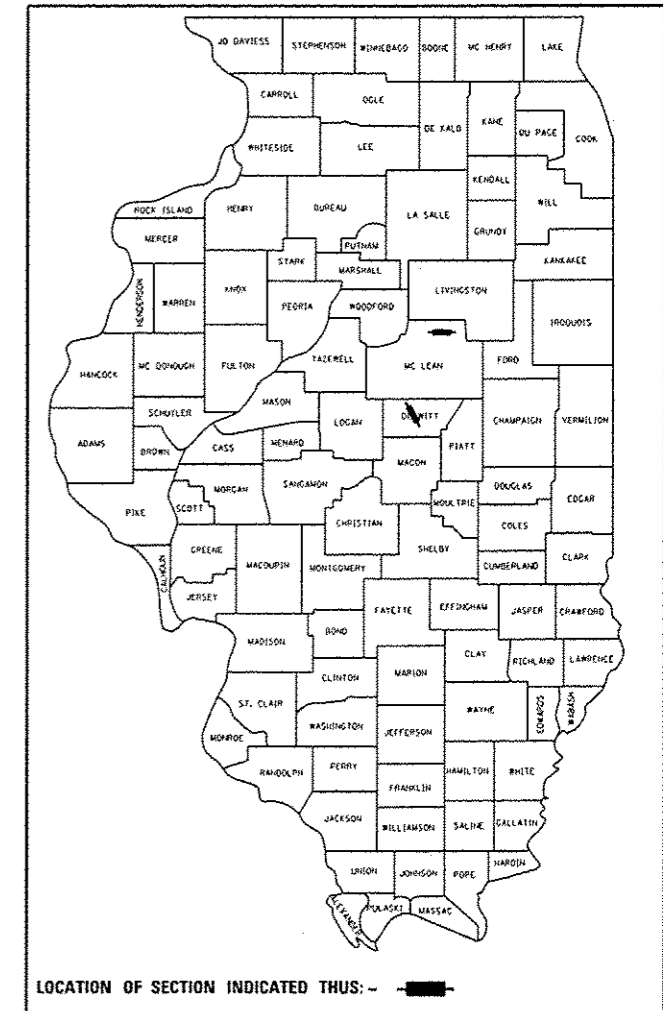
VARIOUS LOCATIONS IN MCLEAN AND DEWITT COUNTIES

SEE SHEET NO. 3 FOR LOCATION MAPS

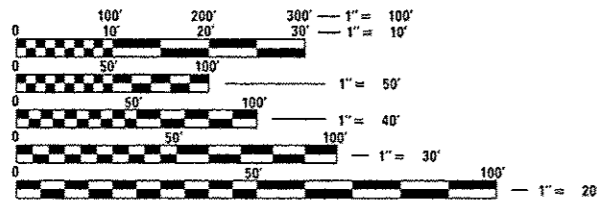
F.A.P. RTE.	SECTION	COUNTY	TOTAL SHEETS	SHEET NO.
**	D5 PATCHING 2014-1	ILLINOIS	6	1
			CONTRACT NO. 70A34	

• MCLEAN & DEWITT COUNTIES
• FAP 317 & FAP 322

D-95-025-13



FOR INDEX OF SHEETS, SEE SHEET NO. 2
FOR SUMMARY OF QUANTITIES, SEE SHEET NO. 4



FULL SIZE PLANS HAVE BEEN PREPARED USING STANDARD ENGINEERING SCALES. REDUCED SIZED PLANS WILL NOT CONFORM TO STANDARD SCALES. IN MAKING MEASUREMENTS ON REDUCED PLANS, THE ABOVE SCALES MAY BE USED.

J.U.L.I.E.
JOINT UTILITY LOCATION INFORMATION FOR EXCAVATION
1-800-892-0123
OR 811

PROJECT ENGINEER – JASON STULTS
PROJECT MANAGER – GREG ROBINSON
Phone Number: (217)465-4181
CONTRACT NO. 70A34

STATE OF ILLINOIS
DEPARTMENT OF TRANSPORTATION
DIVISION OF HIGHWAYS

SUBMITTED 0319 20 14

Joseph E. Crowe (MAG)
DEPUTY DIRECTOR OF HIGHWAYS, REGION ENGINEER

May 9 2014
John D. Baranzelli (P.E.)
acting ENGINEER OF DESIGN AND ENVIRONMENT

May 9 2014
Omer Osman (P.E.)
DIRECTOR OF HIGHWAYS, CHIEF ENGINEER

PRINTED BY THE AUTHORITY
OF THE STATE OF ILLINOIS

INDEX OF SHEETS

SHEET NO.	DESCRIPTION
1	COVER SHEET
2	INDEX OF SHEETS/LIST OF STANDARDS
2	GENERAL NOTES
3	LOCATION MAPS
4	SUMMARY OF QUANTITIES
5	EXISTING TYPICAL SECTIONS
6	SCHEDULE OF QUANTITIES

LIST OF STANDARDS

STANDARD NUMBER	NAME OF STANDARD
000001-06	STANDARD SYMBOLS, ABBREVIATIONS AND PATTERNS
001001-02	AREAS OF REINFORCEMENT BARS
001006	DECIMAL OF AND INCH AND OF A FOOT
420701-02	PAVEMENT FABRIC
421001-02	BAR REINFORCEMENT FOR CRC PAVEMENT
421101-09	24' (7.2 m) CRC PAVEMENT (WITH WIDE FLANGE BEAM TERMINAL JOINT)
442001-04	CLASS A PATCHES
442201-03	CLASS C & D PATCHES
701101-04	OFF-ROAD OPERATIONS, MULTILANE, 15' TO 24" FROM PAVEMENT EDGE
701201-04	LANE CLOSURE, 2L, 2W DAY ONLY
701301-04	LANE CLOSURE, 2L, 2W SHORT TIME OPERATIONS
701400-07	APPROACH TO LANE CLOSURE FREEWAY/EXPRESSWAY
701401-08	LANE CLOSURE, FREEWAY / EXPRESSWAY
701426-06	LANE CLOSURE, MULTILANE, INTERMITTENT OR MOVING OPERATIONS, FOR SPEEDS \geq 45 MPH
701901-03	TRAFFIC CONTROL DEVICES

GENERAL NOTES

G.N. 100
ENGLISH UNITS OF MEASUREMENT SHALL GOVERN OVER AND SUPERSEDE ANY METRIC UNITS SHOWN IN THIS CONTRACT. WHERE INCLUDED, METRIC UNITS ARE FOR INFORMATION ONLY.

GN 406H Mixture Requirements

Location	US 24	US 24
Mixture Use	Surface and Incid.	Class D patch
AC/PG	PG 64-22	PG 64-22
RAP % (Max)	See RAP-RAS S.P.	See RAP-RAS S.P.
Design Air Voids	4.0% @ Ndes=70	4.0% @ Ndes=70
Mix Comp(Gradation)	IL 9.5	IL 19.0 FG
Friction Aggregate	Mix C	N.A.

G.N.-442B
THE PATCHING SCHEDULES INCLUDED IN THE PLANS REPRESENT THE BEST INFORMATION AVAILABLE AT THE TIME OF COMPLETION OF THE PLANS FOR LETTING. VARIATIONS IN LOCATION AND SIZES OF BOTH FULL-DEPTH AND PARTIAL-DEPTH PATCHES MAY OCCUR.

G.N.-667
THE RESIDENT ENGINEER SHALL CONTACT THE PROGRAM DEVELOPMENT CHIEF OF SURVEYS PRIOR TO THE PRE-CONSTRUCTION CONFERENCE FOR INSTRUCTION AS TO SETTING OF TEMPORARY OR PERMANENT TIES FOR CENTERLINE ALIGNMENT CONTROL SURVEY MARKERS (PC'S, PT'S, AND PI'S). PROJECT IMPLEMENTATION PERSONNEL WILL BE RESPONSIBLE FOR SETTING THESE MARKERS.

G.N.-1004.01
COARSE AGGREGATE GRADATION CA-10 MAY BE USED WHENEVER COARSE AGGREGATE CA-6 IS SPECIFIED IN THE STANDARD SPECIFICATIONS.

NO COMMITMENTS

* MCLEAN & DEWITT COUNTIES
** FAP 317 & FAP 322

FILE NAME #	USER NAME = oee1oakjd	DESIGNED -	REVISED -	STATE OF ILLINOIS DEPARTMENT OF TRANSPORTATION	INDEX OF SHEETS, LIST OF STANDARDS & GENERAL NOTES	F.A.P. RTE.	SECTION	COUNTY	TOTAL SHEETS	SHEET NO.
c:\p-work\p\idat\oee1oakjd\0379886\072004-ent-gemote.dgn	DRAWN -	REVISED -	**			D5 PATCHING 2014-1	-	6	2	
PLOT SCALE = 48,0000 / in.	CHECKED -	REVISED -	CONTRACT NO. 70A34							
MODELNAME#	DATE -	REVISED -	ILLINOIS FED. AID PROJECT							
				SCALE: N/A	SHEET 1 OF 1 SHEETS	STA.	TO STA.			

CLINTON /U.S. 51
(DEWITT COUNTY)

LIMITS ENDS
STATION 1518+65.00
(COUNTY LINE)

STATION 1170+95.00

URBAN STA. 749+75.00

RURAL STA. 704+89.00

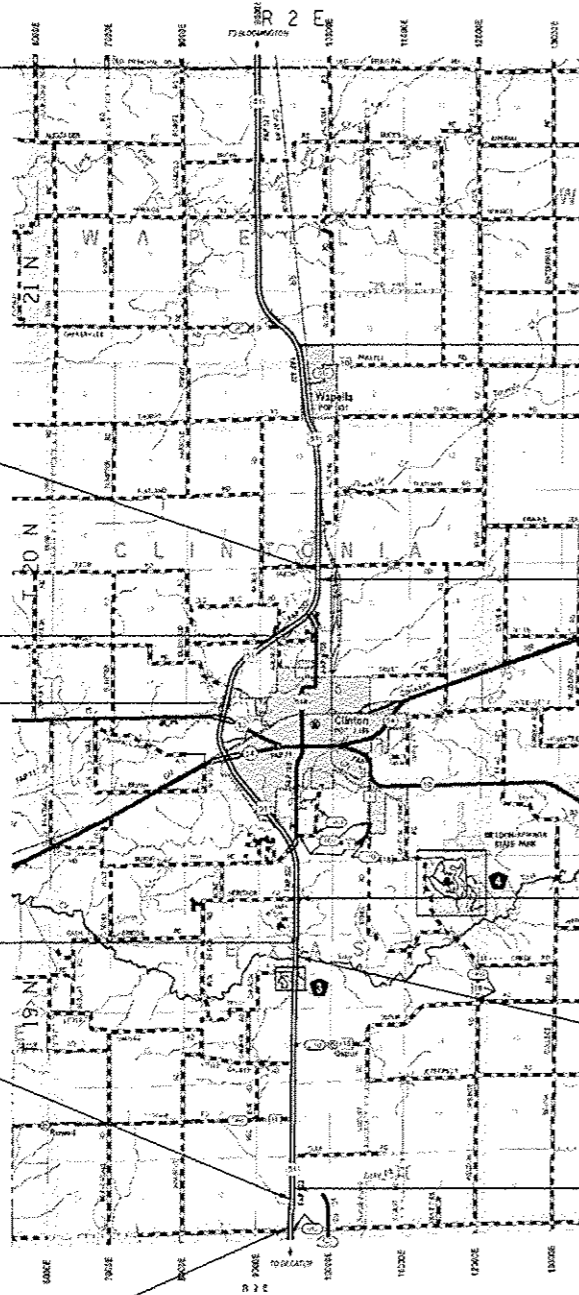
URBAN

URBAN STA. 890+22.00

RURAL

STATION 299+10.00

LIMITS BEGINS
STATION 254+95.00



RURAL STA. 1320+20.00

URBAN

STATION EQUATION:
STA. 802+56.61 (BK) =
STA. 1165+21.68 (AH)

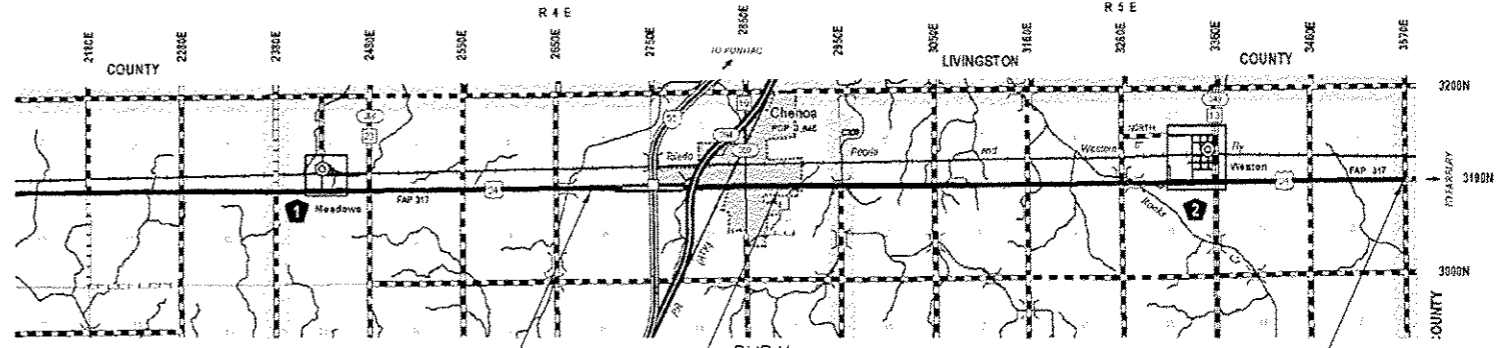
STATION EQUATION:
STA. 944+00.00 (BK) =
STA. 544+42.74 (AH)

STATION EQUATION:
STA. 880+16.13 (BK) =
STA. 880+15.45 (AH)

STATION EQUATION:
STA. 335+00.00 (BK) =
STA. 736+14.79 (AH)

NET LENGTH = 74,107 FT = 14.0 MILE
GROSS LENGTH = 74,107 FT = 14.0 MILE

CHENOA /U.S. 24
(MCLEAN COUNTY)



LIMITS BEGINS
STATION 1521+80.00

STATION EQUATION:
STA. 1604+68.00 (BK) =
STA. 0+00.00 (AH)

LIMITS ENDS
STATION 368+50.00
(COUNTY LINE)

NET LENGTH = 40,128 FT = 7.6 MILE
GROSS LENGTH = 40,128 FT = 7.6 MILE

• MCLEAN & DEWITT COUNTIES
•• FAP 317 & FAP 322

FILE NAME =	USER NAME = oearlock_yd	DESIGNED -	REVISED -
o:\p\work\p\dos\oearlock_yd\2379826\	70031-shr-cover.dgn	DRAWN -	REVISED -
	PLOT SCALE = 40,000' / in.	CHECKED -	REVISED -
MODELNAME =	PLOT DATE = 3/19/2014	DATE - 01/30/14	REVISED -

STATE OF ILLINOIS
DEPARTMENT OF TRANSPORTATION

LOCATION MAPS

SCALE: N/A SHEET 1 OF 1 SHEETS STA. TO STA.

F.A.P. RTE.	SECTION	COUNTY	TOTAL SHEETS	SHEET NO.
••	D5 PATCHING 2014-1	•	6	3
			CONTRACT NO. 70A34	
ILLINOIS FED. AID PROJECT				

SUMMARY OF QUANTITIES

LOCATION OF WORK:	FAP 317 (US 24)	FAP 322 (US 51)	FAP 322 (US 51)
	McLean County	DeWitt County	DeWitt County
	Rural - 2 lane	Urban - 2 lane	Rural - 2 lane
	Sta 1521+80 to 318+40	Sta 890+22 to 1320+20	Sta 254+95 to 890+22
FUNDING BREAKOUT:	100% State	100% State	100% State
CONSTRUCTION TYPE CODE	0005	0005	0005

CODE NO	DESCRIPTION	UNIT	TOTAL QUANTITY			
44200537	CLASS A PATCHES, TYPE I, 9 INCH	SQ YD	12.0		4.0	8.0
44200541	CLASS A PATCHES, TYPE II, 9 INCH	SQ YD	189.0		100.0	89.0
44200545	CLASS A PATCHES, TYPE III, 9 INCH	SQ YD	68.0			68.0
44200547	CLASS A PATCHES, TYPE IV, 9 INCH	SQ YD	240.0		80.0	160.0
44201815	CLASS D PATCHES, TYPE II, 14 INCH	SQ YD	463.0	463.0		
44213000	PATCHING REINFORCEMENT	SQ YD	509.0		184.0	325.0
44213204	TIE BARS 3/4"	EACH	106.0		30.0	76.0
44213200	SAW CUTS	FOOT	2232.0		798.0	1434.0
67100100	MOBILIZATION	L SUM	1.0	0.4	0.3	0.3
70100450	TRAFFIC CONTROL AND PROTECTION, STANDARD 701201	L SUM	1.0	1.0		
70100800	TRAFFIC CONTROL AND PROTECTION, STANDARD 701401	L SUM	1.0		0.5	0.5
X7010410	SPEED DISPLAY TRAILER	CAL MO	1.0		0.5	0.5
70103815	TRAFFIC CONTROL SURVEILLANCE	CAL DA	10.0	5.0	3.0	2.0

• MCLEAN & DEWITT COUNTIES
•• FAP 317 & FAP 322

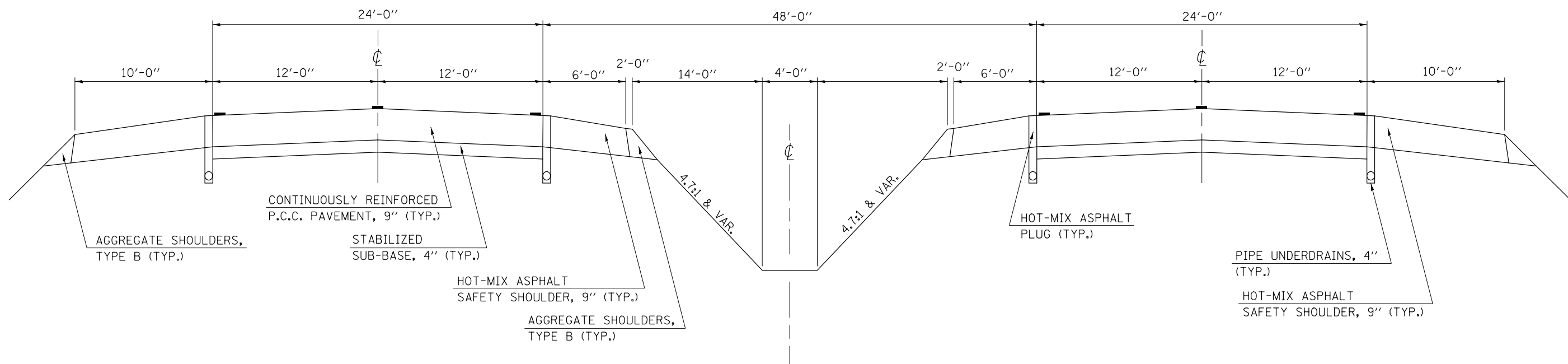
FILE NAME *	USER NAME * oee-loekjd	DESIGNED -	REVISED -	STATE OF ILLINOIS DEPARTMENT OF TRANSPORTATION	SUMMARY OF QUANTITIES	F.A.P. RTE.	SECTION	COUNTY	TOTAL SHEETS	SHEET NO.	
01\p\work\p\sidot\oee-loekjd\0379806\0	072034-shs-500.dgn	DRAWN -	REVISED -			**	D5 PATCHING 2014-1	*	6	4	
#MODELNAME*	PLOT SCALE * 48.0000" / 1"	CHECKED -	REVISED -			CONTRACT NO. 70A34					
	PLOT DATE * 3/19/2014	DATE -	REVISED -			ILLINOIS FED. AID PROJECT					
						SCALE: N/A	SHEET 1	OF 2 SHEETS	STA.	TO STA.	

EXISTING TYPICAL CROSS SECTION – F.A.P. 322 (U.S. 51)

STATION TO STATION
299+10.00 1360+25.00

STATION EQUATIONS

335+00.00 BK = 736+14.79 AH
880+16.13 BK = 880+15.45 AH
944+00.00 BK = 544+42.74 AH
802+56.61 BK = 1165+21.68 AH

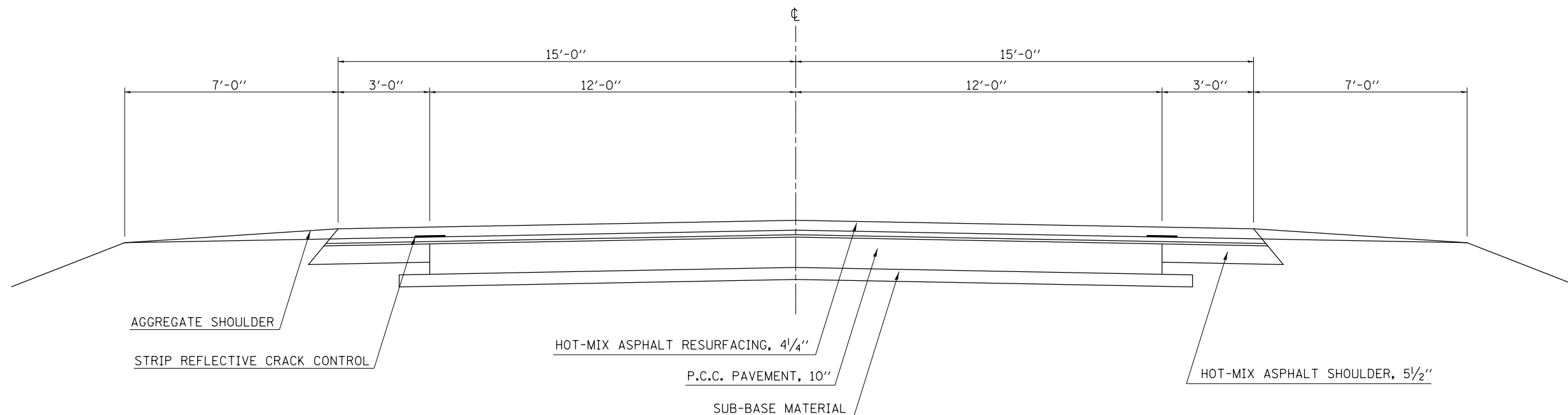


EXISTING TYPICAL CROSS SECTION F.A.P. 317 – (U.S. 24)

STATION TO STATION
28+00.00 318+40.00
1521+80.00 1553+48.00

STATION EQUATION

1604+68.00 BK = 0+00.00 AH



• MCLEAN & DEWITT COUNTIES
• FAP 317 & FAP 322

FILE NAME =	USER NAME = ceerlockjd	DESIGNED -	REVISED -	STATE OF ILLINOIS DEPARTMENT OF TRANSPORTATION	TYPICAL CROSS SECTIONS			F.A.P. RTE.	SECTION	COUNTY	TOTAL SHEETS	SHEET NO.
ce:\pwork\pwork\ceerlockjd\0379806\0570A34-sht-typical.dgn	DRAWN -	REVISED -	••					D5 PATCHING 2014-1	*	6	5	
MODELNAME	PLOT SCALE = 40.0000' / in.	CHECKED -	REVISED -		SCALE: N/A			SHEET 1 OF 2 SHEETS STA. TO STA.			CONTRACT NO. 70A34	
	PLOT DATE = 3/19/2014	DATE - 01/30/14	REVISED -		ILLINOIS FED. AID PROJECT							

SCHEDULE OF QUANTITIES

US 24 & US 51

US 24 CLASS D PATCHING

44201815

STATION	DIRECTION	PLAN LENGTH	PLAN WIDTH	ORIG. SQ YD	TY II SQ YD	
1521+80	EB	6.0	12.0	8.0	8.0	
1521+80	WB	6.0	12.0	8.0	8.0	
1522+00	EB	6.0	14.0	9.3	9.3	
1522+00	WB	6.0	14.0	9.3	9.3	
1525+00	EB	6.0	14.0	9.3	9.3	
1525+75	EB	6.0	12.0	8.0	8.0	
1525+75	WB	6.0	12.0	8.0	8.0	
1526+95	EB	6.0	12.0	8.0	8.0	
1526+39	WB	6.0	12.0	8.0	8.0	
1526+95	EB	6.0	12.0	8.0	8.0	
1536+75	EB	6.0	12.0	8.0	8.0	
1537+64	EB	6.0	12.0	8.0	8.0	
1537+64	EB	6.0	12.0	8.0	8.0	
1548+20	WB	6.0	12.0	8.0	8.0	
1548+20	WB	6.0	12.0	8.0	8.0	
1548+20	EB	6.0	12.0	8.0	8.0	
1548+20	EB	6.0	12.0	8.0	8.0	
1553+48	WB	6.0	12.0	8.0	8.0	
1553+48	WB	6.0	12.0	8.0	8.0	
1553+48	WB	6.0	12.0	8.0	8.0	
1553+48	EB	6.0	12.0	8.0	8.0	
station equation 1604+68(BK) = 0+00 (AH)						
28+00	EB	6.0	12.0	8.0	8.0	
28+00	WB	6.0	12.0	8.0	8.0	
28+52	EB	6.0	12.0	8.0	8.0	
28+62	EB	6.0	12.0	8.0	8.0	
28+62	WB	8.0	12.0	10.7	10.7	
54+40	EB	6.0	12.0	8.0	8.0	
54+40	WB	6.0	12.0	8.0	8.0	
64+96	WB	6.0	12.0	8.0	8.0	
70+23	WB	6.0	12.0	8.0	8.0	
71+44	WB	6.0	12.0	8.0	8.0	
71+64	WB	6.0	12.0	8.0	8.0	
71+91	WB	6.0	12.0	8.0	8.0	
72+34	WB	6.0	12.0	8.0	8.0	
73+54	WB	6.0	12.0	8.0	8.0	
117+76	WB	6.0	12.0	8.0	8.0	
117+76	EB	6.0	12.0	8.0	8.0	
123+14	EB	6.0	12.0	8.0	8.0	
123+56	EB	6.0	12.0	8.0	8.0	
124+08	WB	6.0	12.0	8.0	8.0	
133+60	WB	6.0	12.0	8.0	8.0	
138+88	WB	6.0	12.0	8.0	8.0	
154+72	WB	6.0	12.0	8.0	8.0	
155+22	WB	6.0	12.0	8.0	8.0	
155+62	WB	6.0	12.0	8.0	8.0	
156+32	WB	6.0	12.0	8.0	8.0	
157+52	WB	6.0	12.0	8.0	8.0	
157+77	WB	6.0	12.0	8.0	8.0	
218+08	EB	6.0	12.0	8.0	8.0	
218+08	WB	6.0	12.0	8.0	8.0	
270+88	WB	6.0	12.0	8.0	8.0	
271+28	WB	6.0	12.0	8.0	8.0	
271+43	WB	6.0	12.0	8.0	8.0	
271+63	WB	6.0	12.0	8.0	8.0	
271+63	EB	6.0	12.0	8.0	8.0	
276+16	WB	6.0	12.0	8.0	8.0	
318+40	WB	6.0	12.0	8.0	8.0	
				TOTAL	462.7	462.7
				FINAL TOTAL	463.0	463.0

US 51 CLASS A PATCHING

North of Wapella to North of Clinton

STATION	DIRECTION	LENGTH (ft)	WIDTH (ft)	AREA (sq. yd.)	44200537 TY I (sq. yd.)	44200541 TY II (sq. yd.)	44200545 TY III (sq. yd.)	44200547 TY IV (sq. yd.)	44213000 REINF (sq. yd.)	44213200 SAW CUT (ft)	44213204 TIE BAR 3/4 (each)
1360+25	SBDL	18.0	12.0	24.0			24.0		24.0	84.0	
1362+45	SBDL	8.0	6.0	5.3		5.3			5.3	40.0	
1354+62	SBDL	6.0	12.0	8.0		8.0			8.0	60.0	
1352+80	SBDL	6.0	12.0	8.0		8.0			8.0	60.0	
1352+00	SBDL	6.0	12.0	8.0		8.0			8.0	60.0	
1347+32	SBDL	6.0	6.0	4.0	4.0				4.0	36.0	
1346+40	SBDL	6.0	6.0	4.0	4.0				4.0	36.0	
1329+00	SBDL	6.0	6.0	4.0		4.0			4.0	36.0	
1318+15	SBDL	20.0	6.0	13.3		13.3			13.3	64.0	
1309+15	SBDL	6.0	6.0	4.0		4.0			4.0	36.0	
1305+45	SBDL	16.0	12.0	21.3		21.3			21.3	80.0	
1303+90	SBDL	13.0	6.0	8.7		8.7			8.7	50.0	
1248+13	SBDL	6.0	6.0	4.0	4.0				4.0	36.0	
1220+40	SBDL	6.0	12.0	8.0		8.0			8.0	60.0	
1220+40	SBPL	6.0	12.0	8.0		8.0			8.0	60.0	
1220+25	SBPL	6.0	12.0	8.0		8.0			8.0	60.0	
1738+10	SBDL	6.0	15.0	10.0		10.0			10.0	72.0	
1223+55	NBDL	8.0	12.0	10.7		10.7			10.7	64.0	
1303+50	NBDL	60.0	12.0	80.0				80.0	80.0	168.0	30
1170+95	NBDL	12.0	6.0	8.0		8.0			8.0	48.0	

South of Clinton

STATION	DIRECTION	LENGTH (ft)	WIDTH (ft)	AREA (sq. yd.)	44200537 TY I (sq. yd.)	44200541 TY II (sq. yd.)	44200545 TY III (sq. yd.)	44200547 TY IV (sq. yd.)	44213000 REINF (sq. yd.)	44213200 SAW CUT (ft)	44213204 TIE BAR 3/4 (each)	
656+10	SBDL	4.5	12.0	6.0		6.0			6.0	57.0		
656+10	SBPL	4.5	12.0	6.0		6.0			6.0	57.0		
656+30	SBDL	8.0	12.0	10.7		10.7			10.7	64.0		
656+30	SBPL	8.0	12.0	10.7		10.7			10.7	64.0		
879+80	SBDL	12.0	6.0	8.0		8.0			8.0	48.0		
874+85	SBDL	9.0	6.0	6.0		6.0			6.0	42.0		
872+40	SBDL	60.0	6.0	40.0				40.0	40.0	144.0	30	
794+60	NBDL	26.0	12.0	34.7				34.7	34.7	100.0	13	
793+80	NBDL	39.0	12.0	52.0				52.0	52.0	126.0	20	
793+35	NBDL	17.0	12.0	22.7			22.7		22.7	82.0		
792+75	NBDL	25.0	12.0	33.3				33.3	33.3	98.0	13	
station equation 335+00 (BK) = 736+14.79 (AH)												
299+25	SBDL	16.0	12.0	21.3			21.3		21.3	80.0		
299+10	SBPL	6.0	12.0	8.0		8.0			8.0	60.0		
				TOTAL	508.7	12.0	188.7	68.0	240.0	508.7	2232.0	106
				FINAL TOTAL	509.0	12.0	189.0	68.0	240.0	509.0	2232.0	106.0

• MCLEAN & DEWITT COUNTIES
•• FAP 317 & FAP 322

FILE NAME =	USER NAME = ceerlockjd	DESIGNED -	REVISED -	STATE OF ILLINOIS DEPARTMENT OF TRANSPORTATION	SCHEDULE OF QUANTITIES			F.A.P. RTE.	SECTION	COUNTY	TOTAL SHEETS	SHEET NO.
ci:\pw\work\pwork\ceerlockjd\0379806\0570A34-sht-schedule.dgn		DRAWN -	REVISED -						D5 PATCHING 2014-1	*	6	6
MODELNAME	PLOT SCALE = 40.0000' / in.	CHECKED -	REVISED -			SCALE: N/A	SHEET 2 OF 2 SHEETS	STA.				CONTRACT NO. 70A34
	PLOT DATE = 3/19/2014	DATE -	REVISED -					TO STA.				ILLINOIS FED. AID PROJECT