
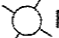

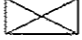


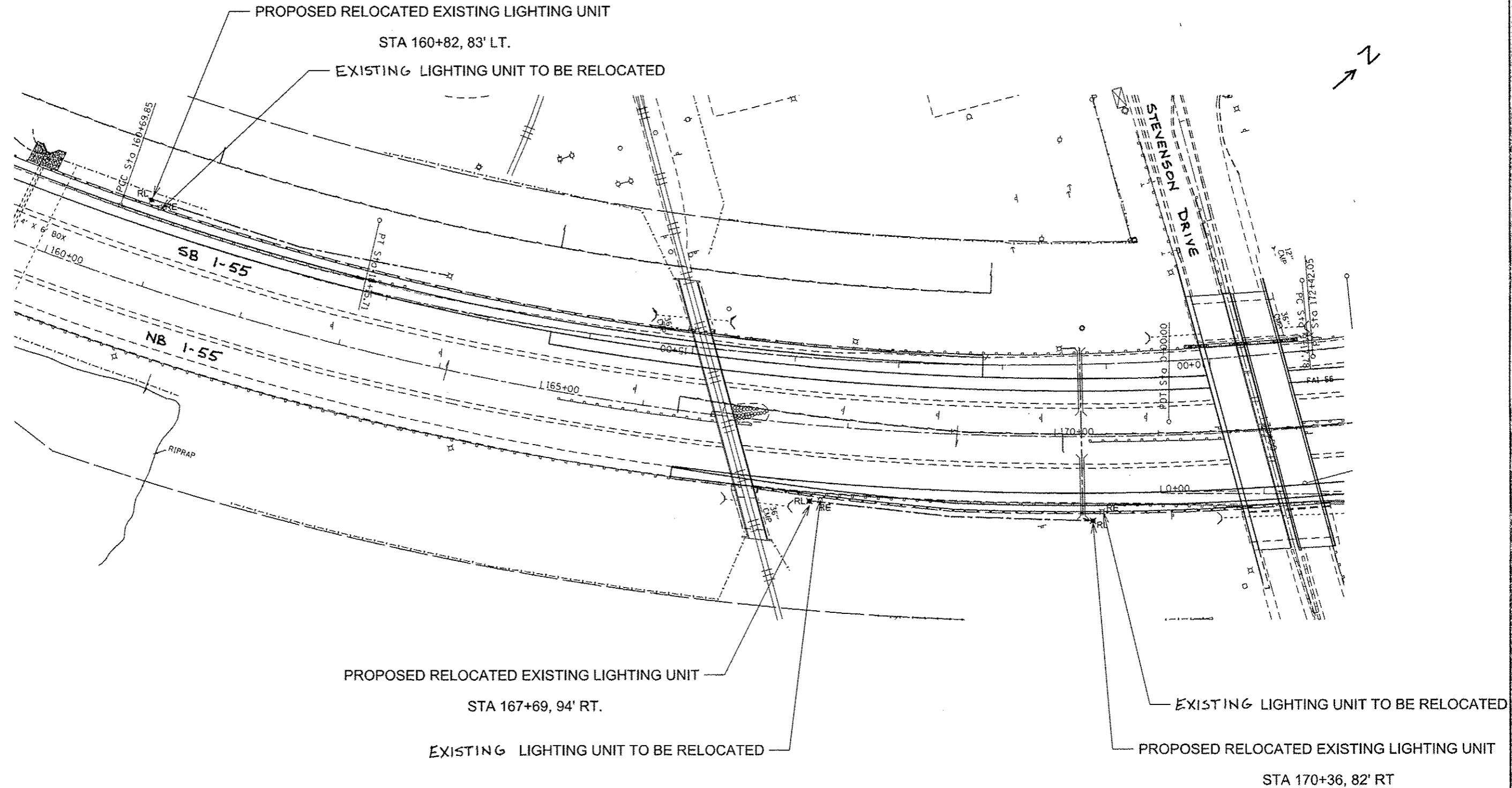


NOTE: THE CONTRACTOR SHALL LOCATE, UNCOVER AND RE-ROUTE EXISTING UNIT DUCT TO THE RELOCATED LIGHTING UNIT. THE COST OF THIS WORK SHALL BE INCLUDED IN THE RELOCATE EXISTING LIGHTING UNIT PAY ITEM.

-  EXISTING LIGHTING UNIT TO REMAIN
-  RE EXISTING LIGHTING UNIT TO BE RELOCATED
-  RL RELOCATED LIGHTING UNIT
-  EXISTING LIGHTING CONTROLLER
-  UNIT DUCT, 600V, 3-1C NO.6, 1/C NO. 6 GROUND, (XLP-TYPE USE), 1" DIA., POLYTHYLENE
-  UNDERGROUND CONDUIT, COILABLE NONMETALLIC CONDUIT, 2.5" DIA., SCHEDULE 80



FILE NAME :	USER NAME : sparksgv	DESIGNED -	REVISED -	<b>STATE OF ILLINOIS DEPARTMENT OF TRANSPORTATION</b>	<b>LIGHTING RELOCATION PLANS</b>			F.A.I. RTE.	SECTION	COUNTY	TOTAL SHEETS	SHEET NO.
c:\pwork\pwork\sparksgv\d0326237\LightingDesign.dgn	DRAWN -	REVISED -	55					(84-3)J-4	SANGAMON	56	25	
Default	PLOT SCALE * 100.0000' / 1" =	CHECKED -	REVISED -		SCALE:      SHEET    OF    SHEETS    STA.            TO STA.			CONTRACT NO. 72F90				
	PLOT DATE * Oct-17-2013 09:57:26AM	DATE -	REVISED -		ILLINOIS FED. AID PROJECT							