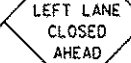




W20-I103(O)-48

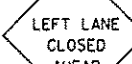
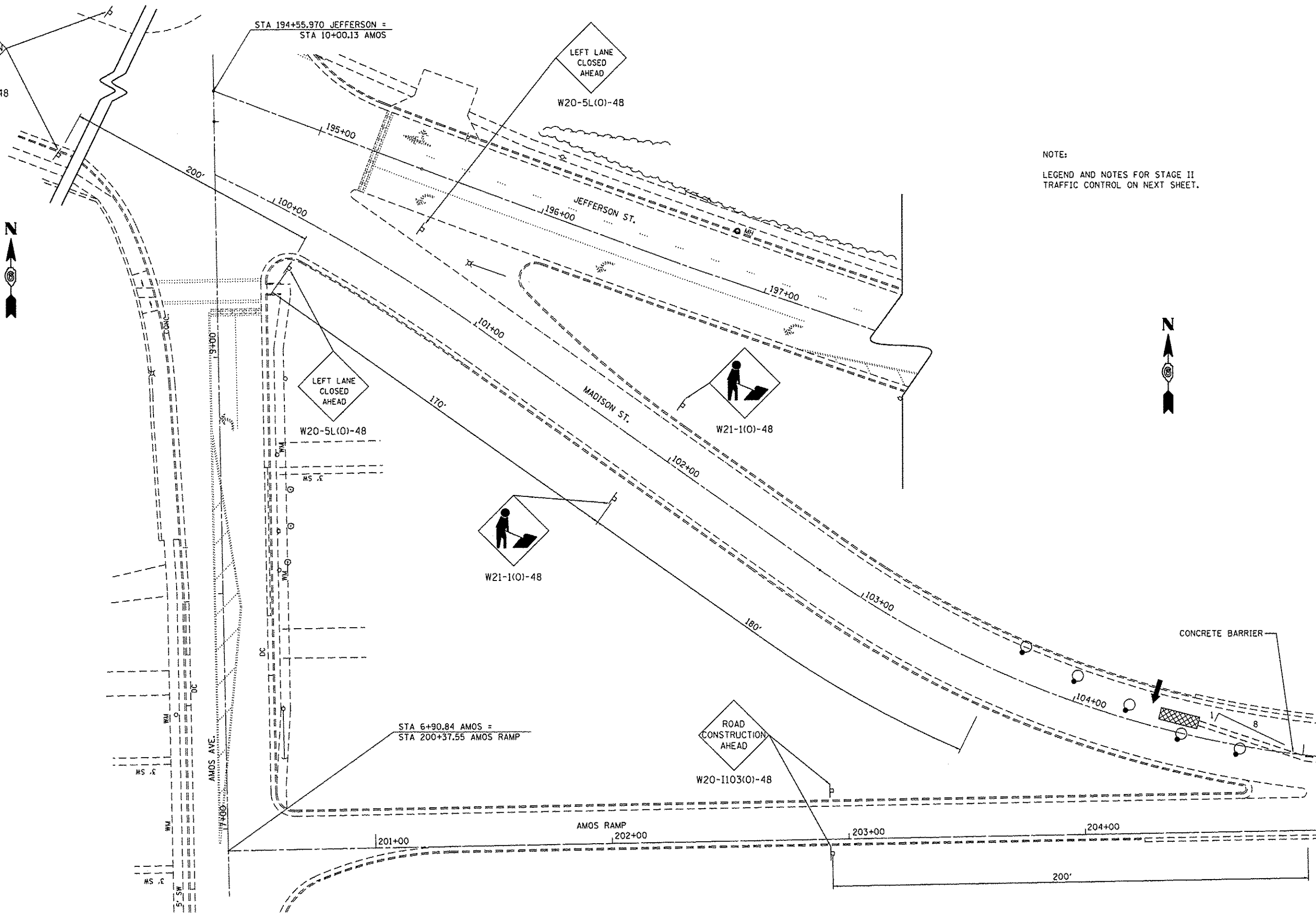


STA 194+55.970 JEFFERSON =
STA 10+00.13 AMOS



W20-5L(O)-48

NOTE:
LEGEND AND NOTES FOR STAGE II
TRAFFIC CONTROL ON NEXT SHEET.



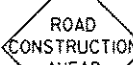
W20-5L(O)-48



W21-1(O)-48



W21-1(O)-48



W20-I103(O)-48

STA 6+90.84 AMOS =
STA 200+37.55 AMOS RAMP



CONCRETE BARRIER

MATCH LINE STA. 105+06.00

FILE NAME *	USER NAME * dudleybm	DESIGNED - DMS	REVISED -	STATE OF ILLINOIS DEPARTMENT OF TRANSPORTATION	STAGE II TRAFFIC CONTROL DETAIL			F.A.P. RTE. 67	SECTION (1072) BDR	COUNTY SANGAMGN	TOTAL SHEETS 23	SHEET NO. 11
C:\OPERATIONS\B-ridgeplans_CAD\72085 - 0848198 overlay\Complete Plans and TC.dgn		DRAWN - DMS	REVISED -		SCALE:	SHEET 1	OF 2 SHEETS	STA.	TO STA.	ILLINOIS FED. AID PROJECT		
		CHECKED -	REVISED -							CONTRACT NO. 72G85		
Default		DATE -	REVISED -									