

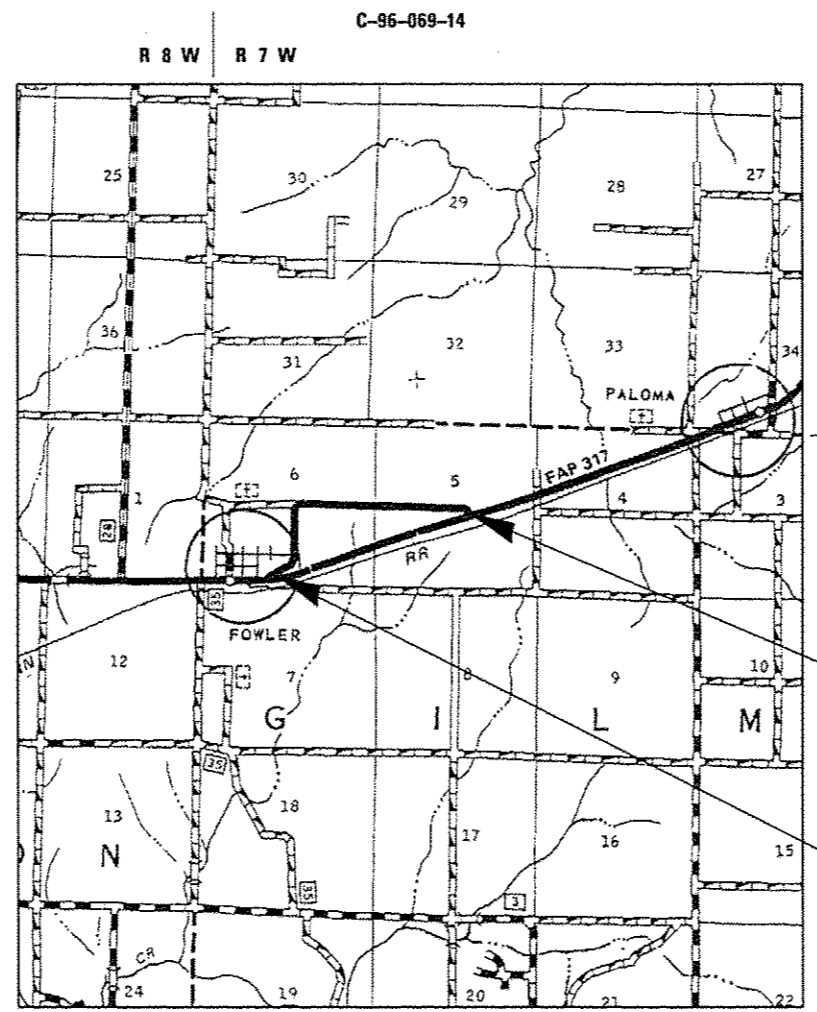
STATE OF ILLINOIS
 DEPARTMENT OF TRANSPORTATION
 DIVISION OF HIGHWAYS
PROPOSED
CONTRACT MAINTENANCE

FOR INDEX OF SHEETS, SEE SHEET NO. 2

OLD US 24 /SBI 4, ALT. 5.96
 SECTION (2) Q

ADAMS COUNTY

RTE.	SECTION	COUNTY	TOTAL SHEETS	SHEET NO.
24	(2) Q	ADAMS	6	1
FED. ROAD DIST. NO. -		ILLINOIS	CONTRACT NO. 72G98	

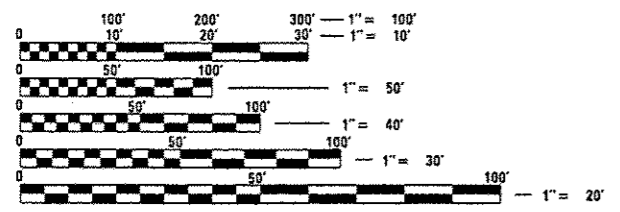


END PROJECT
 STA. 2023 + 21

BEGIN PROJECT
 STA. 1935 + 53

GROSS LENGTH = 8,768.00 FT. = 1.661 MILE

ADT = 75
 SU = 0
 MU = 0



FULL SIZE PLANS HAVE BEEN PREPARED USING STANDARD ENGINEERING SCALES. REDUCED SIZED PLANS WILL NOT CONFORM TO STANDARD SCALES. IN MAKING MEASUREMENTS ON REDUCED PLANS, THE ABOVE SCALES MAY BE USED.

J.U.L.I.E.
 JOINT UTILITY LOCATION INFORMATION FOR EXCAVATION
 1-800-892-0123
 OR 811

PLAN AND CONTRACT TECHNICIAN
 TIMOTHY SHARP (217)782-7743

CONTRACT NO. 72G98

STATE OF ILLINOIS
 DEPARTMENT OF TRANSPORTATION
 DIVISION OF HIGHWAYS

SUBMITTED April 2 20 14
Roy D. Key
 DEPUTY DIRECTOR OF HIGHWAYS, REGION ENGINEER

May 9 20 14
John D. Baranzelli, P.E.
 ENGINEER OF DESIGN AND ENVIRONMENT

May 9 20 14
Emet Osman, P.E.
 DIRECTOR OF HIGHWAYS, CHIEF ENGINEER

**PRINTED BY THE AUTHORITY
 OF THE STATE OF ILLINOIS**