

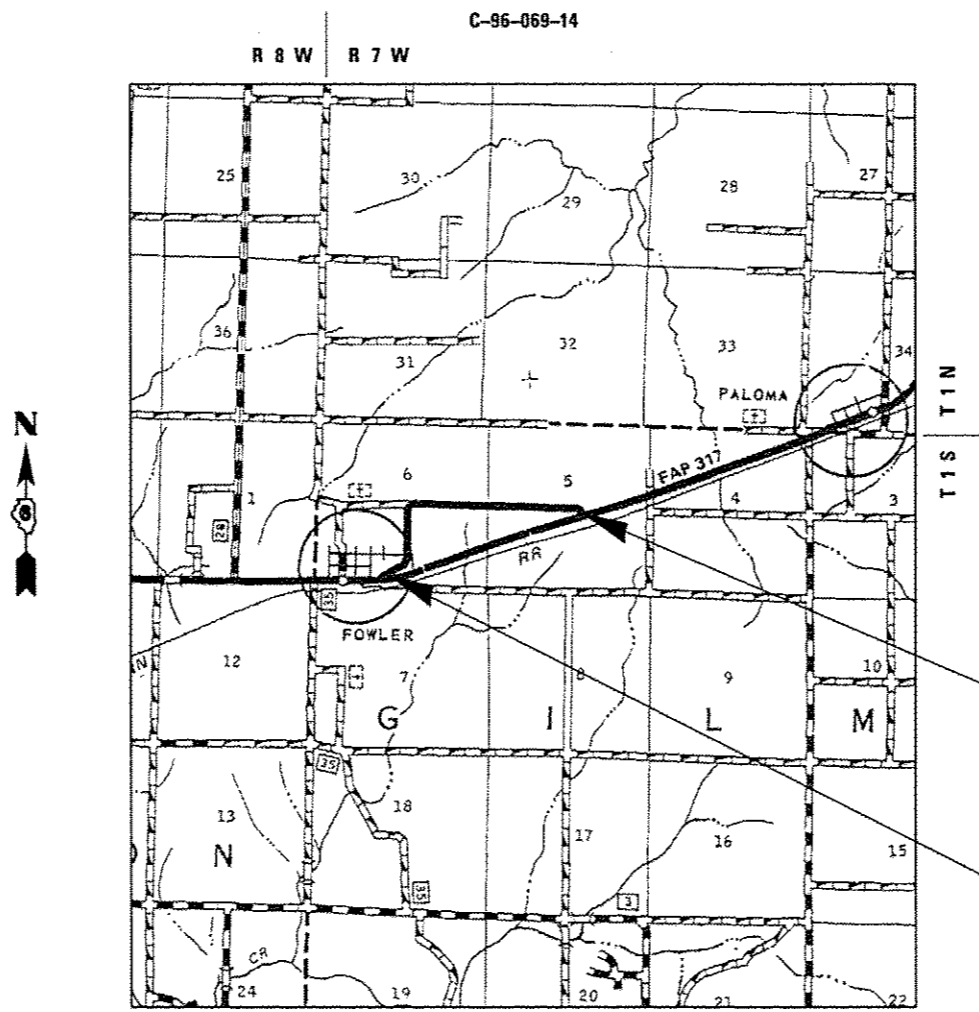
STATE OF ILLINOIS
DEPARTMENT OF TRANSPORTATION
DIVISION OF HIGHWAYS
**PROPOSED
CONTRACT MAINTENANCE**

FOR INDEX OF SHEETS, SEE SHEET NO. 2

OLD US 24 /SBI 4, ALT. 5.96
SECTION (2) Q

ADAMS COUNTY

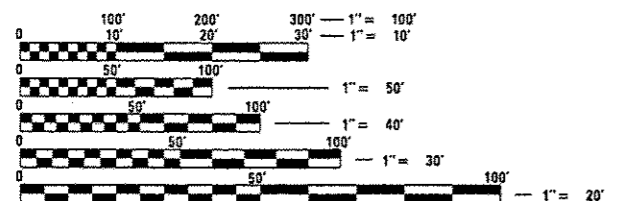
RTE.	SECTION	COUNTY	TOTAL SHEETS	SHEET NO.
24	(2) Q	ADAMS	6	1
FED. ROAD DIST. NO. -		ILLINOIS	CONTRACT NO. 72G98	



END PROJECT
STA. 2023 + 21

BEGIN PROJECT
STA. 1935 + 53

ADT = 75
SU = 0
MU = 0



FULL SIZE PLANS HAVE BEEN PREPARED USING STANDARD ENGINEERING SCALES. REDUCED SIZED PLANS WILL NOT CONFORM TO STANDARD SCALES. IN MAKING MEASUREMENTS ON REDUCED PLANS, THE ABOVE SCALES MAY BE USED.

J.U.L.I.E.
JOINT UTILITY LOCATION INFORMATION FOR EXCAVATION
1-800-892-0123
OR 811

PLAN AND CONTRACT TECHNICIAN
TIMOTHY SHARP (217)782-7743

CONTRACT NO. 72G98

GROSS LENGTH = 8,768.00 FT. = 1.661 MILE

STATE OF ILLINOIS
DEPARTMENT OF TRANSPORTATION
DIVISION OF HIGHWAYS

SUBMITTED April 2 2014
Roy D. Dyer
DEPUTY DIRECTOR OF HIGHWAYS, REGION ENGINEER

May 9 2014
John D. Baranzelli, P.E.
ENGINEER OF DESIGN AND ENVIRONMENT

May 9 2014
Emet Osman, P.E.
DIRECTOR OF HIGHWAYS, CHIEF ENGINEER

**PRINTED BY THE AUTHORITY
OF THE STATE OF ILLINOIS**

INDEX OF SHEETS

1. COVER
2. INDEX OF SHEETS, GENERAL NOTES, AND HIGHWAY STANDARDS
3. SUMMARY OF QUANTITIES
4. PLAN
5. TYPICAL SECTIONS
6. SCHEDULES

HIGHWAY STANDARDS

- 701001-02 OFF-RD OPERATIONS, 2L, 2W, MORE THAN 15' AWAY FROM EDGE OF PAVEMENT
 701006-05 OFF-RD OPERATIONS, 2L, 2W, 15' TO 24" FROM EDGE OF PAVEMENT
 701011-04 OFF-RD MOVING OPERATIONS, 2L, 2W, DAY ONLY
 701301-04 LANE CLOSURE, 2L, 2W, SHORT TIME OPERATIONS
 701306-03 LANE CLOSURE, 2L, 2W, SLOW MOVING OPERATIONS DAY ONLY, FOR SPEEDS > 45 MPH
 701311-03 LANE CLOSURE, 2L, 2W, MOVING OPERATIONS DAY ONLY
 701901-03 TRAFFIC CONTROL DEVICES
 780001-04 TYPICAL PAVEMENT MARKINGS

GENERAL NOTES

1. ANY REFERENCE TO THE STANDARDS THROUGHOUT THE PLANS SHALL BE INTERPRETED TO BE THE LATEST STANDARDS OF THE DEPARTMENT AS INCLUDED IN THE PLANS.
2. NO EXCAVATION IS ANTICIPATED ON THIS PROJECT. SHOULD ANY EXCAVATION BE REQUIRED, J.U.L.I.E. SHALL BE NOTIFIED A MINIMUM OF 48 HOURS IN ADVANCE (800) 892-0123.
3. AGGREGATE FOR THE A-2 BITUMINOUS SURFACE TREATMENT SHALL BE CRUSHED LIMESTONE.
4. SHORT-TERM PAVEMENT MARKING SHALL BE PAINT - TAPE WILL NOT BE ALLOWED.
5. PERMANENT PAVEMENT MARKINGS SHALL NOT BE APPLIED UNTIL 10 DAYS AFTER THE AGGREGATE HAS BEEN APPLIED.
6. ADDITIONAL BROOMING (UP TO 4 TIMES) SHALL BE REQUIRED AT THE DISCRETION OF THE ENGINEER, INCLUDING THE DAY OF PERMANENT PAVEMENT MARKING.
7. THE CONTRACTOR SHALL GIVE IDOT OPERATIONS TWO WEEKS NOTICE PRIOR TO STARTING WORK IN ORDER FOR IDOT TO COMPLETE PATCHING.

STATE OF ILLINOIS DEPARTMENT OF TRANSPORTATION DIVISION OF HIGHWAYS DISTRICT 6	
EXAMINED	April 2 20 14 <i>Michael P. ... for Roger L. Driskoll</i> ENGINEER OF OPERATIONS
EXAMINED	MARCH 31 20 14 <i>Jimmy ...</i> ENGINEER OF PROJECT IMPLEMENTATION
EXAMINED	March 31 20 14 <i>ARMLY</i> ENGINEER OF PROGRAM DEVELOPMENT

FILE NAME *	USER NAME * shorpid	DESIGNED -	REVISED -	STATE OF ILLINOIS DEPARTMENT OF TRANSPORTATION	INDEX OF SHEETS, HIGHWAY STANDARDS AND GENERAL NOTES			RTE.	SECTION	COUNTY	TOTAL SHEETS	SHEET NO.
o:\work\adms\shorpid\2014\03\08\08\0872\08-18-14\gennote.dgn	08-18-14	DRAWN -	REVISED -		24	(2) Q	ADAMS	5	2			
PLOT SCALE * 2.0000 "/ in.		CHECKED -	REVISED -		CONTRACT NO. 72698			ILLINOIS FED. AID PROJECT				
Default	PLOT DATE * Mar-25-2014 06:42:37AM	DATE -	REVISED -		SCALE:	SHEET	OF	SHEETS	STA.	TO	STA.	

CODE NO.	ITEM	UNIT	TOTAL QUANTITY	CONSTR. CODE
				100% STATE
				ROADWAY
				0005 S. N.
40300405	POLYMERIZED BITUMINOUS MATERIALS (COVER AND SEAL COAT)	TON	81	81
40300500	COVER COAT AGGREGATE	TON	215	215
40300600	SEAL COAT AGGREGATE	TON	215	215
67100100	MOBILIZATION	L SUM	1	1
70100460	TRAFFIC CONTROL AND PROTECTION, STANDARD 701306	L SUM	1	1
70300100	SHORT-TERM PAVEMENT MARKING	FOOT	840	840
* 7	78001120 PAINT PAVEMENT MARKING - LINE 5"	FOOT	26,687	26,687

* SPECIALTY ITEM

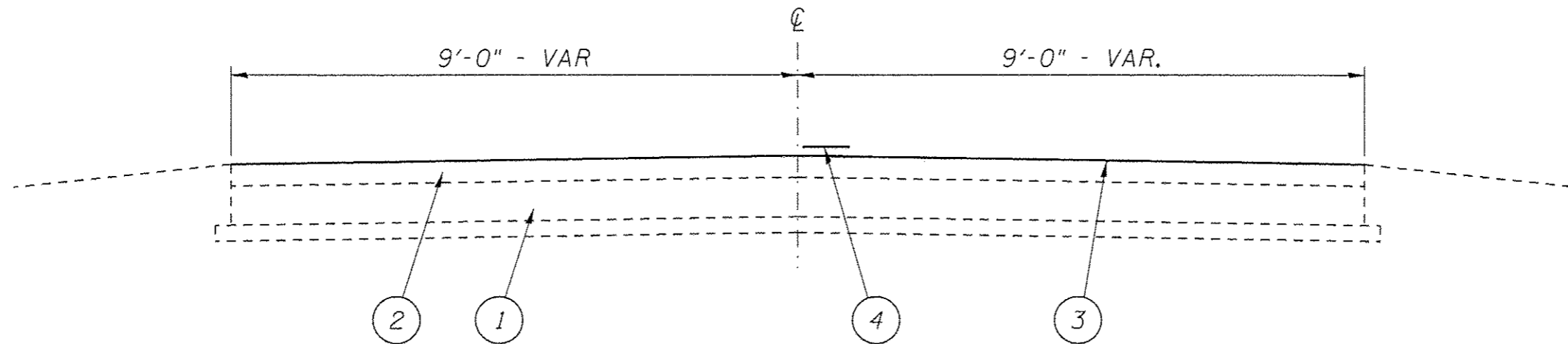
FILE NAME =	USER NAME = sharptd	DESIGNED -	REVISED -	STATE OF ILLINOIS DEPARTMENT OF TRANSPORTATION	SUMMARY OF QUANTITIES	RTE.	SECTION	COUNTY	TOTAL SHEETS	SHEET NO.
o:\pwwork\pwwork\sharptd\02305980\0672298-sh13-500.dgn	DRAWN -	REVISED -	24			135 0	CHRISTIAN	6	3	
PLOT SCALE = 3.0000 ' / in.	CHECKED -	REVISED -	CONTRACT NO. 72098							
SHT_PLAN	PLOT DATE = Apr-04-2014 08:54:42AM	DATE -	REVISED -			SCALE: _____	SHEET _____ OF _____ SHEETS	STA. _____ TO STA. _____	ILLINOIS FED. AID PROJECT	



BEGIN PROJECT
STA. 1935+53

END PROJECT
STA. 2023+21

FILE NAME *	USER NAME * sherpdt	DESIGNED -	REVISED -	STATE OF ILLINOIS DEPARTMENT OF TRANSPORTATION	PLAN I-55 WEST FRONTAGE ROAD		RTE.	SECTION	COUNTY	TOTAL SHEETS	SHEET NO.
cr:\work\p\p\dot\sherpdt\0385986\0672	98-shr4-plan.dgn	DRAWN -	REVISED -		24	(2) 0	ADAMS	6	4		
	PLOT SCALE * 1/8"=1'-0" 1/8" in.	CHECKED -	REVISED -		SCALE: SHEET - OF - SHEETS STA. TO STA.		CONTRACT NO. 72698		ILLINOIS FED. AID PROJECT		
Default	PLOT DATE * Mar-25-2014 06:46:29AM	DATE -	REVISED -								



STA. 1935+53 TO 2023+21

LEGEND

- 1- EXIST. P.C.C. PAVEMENT 5"
- 2- EXIST. HOT-MIX ASPHALT SURFACE
- 3- PROP. BIT. SURF. TREATMENT (CL. A-2)
- 4- PAINT PAVEMENT MARKING - LINE 5"

FILE NAME : c:\pwwork\pwwork\sharpe\2305982\0672	USER NAME : sharpe	DESIGNED -	REVISED -	STATE OF ILLINOIS DEPARTMENT OF TRANSPORTATION	TYPICAL SECTION	S.B.I. RTE.	SECTION	COUNTY	TOTAL SHEETS	SHEET NO.
	238-sh15-typicol.dgn	DRAWN -	REVISED -			24	(2) 0	ADAMS	6	5
PLOT SCALE : 3/8" = 1'	CHECKED -	REVISED -	SCALE: _____ SHEET _____ OF _____ SHEETS STA. _____ TO STA. _____			CONTRACT NO. 72G98				
PLOT DATE : Mar-25-2014 08:47:16AM	DATE -	REVISED -	ILLINOIS FED. AID PROJECT							

PAVEMENT MARKING SCHEDULE			
STATION	TYPE	PAINT PAV'T	
		MRK - LINE 5"	
		YELLOW	WHITE
LT & RT 1935+53 TO 2023+21	EDGE LINE		17,536 FT
1935+53 TO 1966+57	SKIP DASH	780 FT	
1967+09 TO 1987+61	SKIP DASH	510 FT	
1995+72 TO 2009+82	SKIP DASH	350 FT	
2013+10 TO 2023+21	SKIP DASH	250 FT	
RT 1938+62 TO 1946+76	NO PASS	814 FT	
LT 1946+80 TO 1953+96	NO PASS	716 FT	
RT 1960+68 TO 1967+09	NO PASS	641 FT	
LT 1966+57 TO 1974+17	NO PASS	760 FT	
RT 1978+54 TO 1995+72	NO PASS	1,718 FT	
LT 1987+61 TO 1999+60	NO PASS	1,199 FT	
RT 2005+00 TO 2013+10	NO PASS	810 FT	
RT 2009+82 TO 2016+88	NO PASS	706 FT	
DEDUCT FOR SIDEROADS	EDGE LINE		(103 FT)
TOTALS		9,254 FT	17,433 FT

FILE NAME * c:\pwwork\pwwork\sharptd\02305980\067298-shc6r-schedule.dgn	USER NAME * sharptd	DESIGNED -	REVISED -	STATE OF ILLINOIS DEPARTMENT OF TRANSPORTATION	SCHEDULE OF QUANTITIES			RTE.	SECTION	COUNTY	TOTAL SHEETS	SHEET NO.
		DRAWN -	REVISED -					24	(2) 0	ADAMS	6	6
		CHECKED -	REVISED -					CONTRACT NO. 72G98				
Default		DATE -	REVISED -		SCALE:	SHEET	OF	SHEETS	STA.	TO STA.	ILLINOIS FED. AID PROJECT	