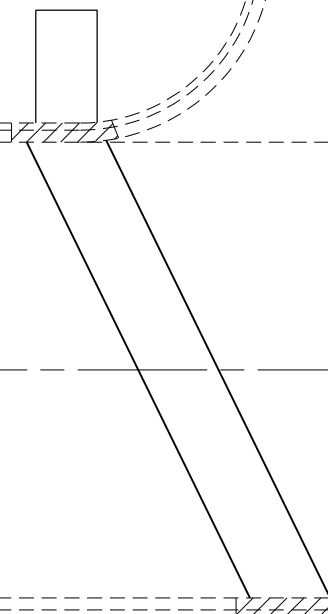




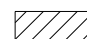
+87 ALLEN ST

CONSTRUCT PERPENDICULAR
CURB RAMP IN ACCORDANCE
WITH STANDARD 424001



1187

CONSTRUCT PERPENDICULAR
MID-BLOCK CURB RAMP IN
ACCORDANCE WITH STANDARD 424016

 COMB. C & G REMOVAL

NOTE: LOCATE SIDEWALK TO BE WITHIN
REACH OF PEDESTRIAN PUSH BUTTONS

ALLEN & MAIN								
PAY ITEM (UNIT)	QUADRANT							
	NW		NE		SW		SE	
	state	city	state	city	state	city	state	city
SIDEWALK REMOVAL (SQ FT)								
CURB REMOVAL (FOOT)								
COMB. CURB & GUTTER REMOVAL (FOOT)		8				8		
COMB. CONC. CURB & GUTTER, TYPE B-6.12 (FOOT)		8				8		
COMB. CONC. CURB & GUTTER, TYPE B-6.24 (FOOT)		60				50		
PCC SIDEWALK 4" (SQ FT)		8				8		
DETECTABLE WARNINGS (SQ FT)								

FILE NAME =	USER NAME = steffenmk	DESIGNED -	REVISED -
ci:\pw\work\p\idot\steffenmk\d0282300\074554-sht-sidewalk-details.dgn		DRAWN -	REVISED -
Default	PLOT SCALE = 16.0000' / in.	CHECKED -	REVISED -
	PLOT DATE = 4/5/2013	DATE -	REVISED -

STATE OF ILLINOIS
DEPARTMENT OF TRANSPORTATION

SIDEWALK DETAILS
ALLEN STREET

SCALE: SHEET 1 OF 15 SHEETS STA. TO STA.

F.A.P. RTE.	SECTION	COUNTY	TOTAL SHEETS	SHEET NO.
781	(1Z,17Z)RS-1	CRAWFORD	60	31
ILLINOIS FED. AID PROJECT			CONTRACT NO. 74554	