

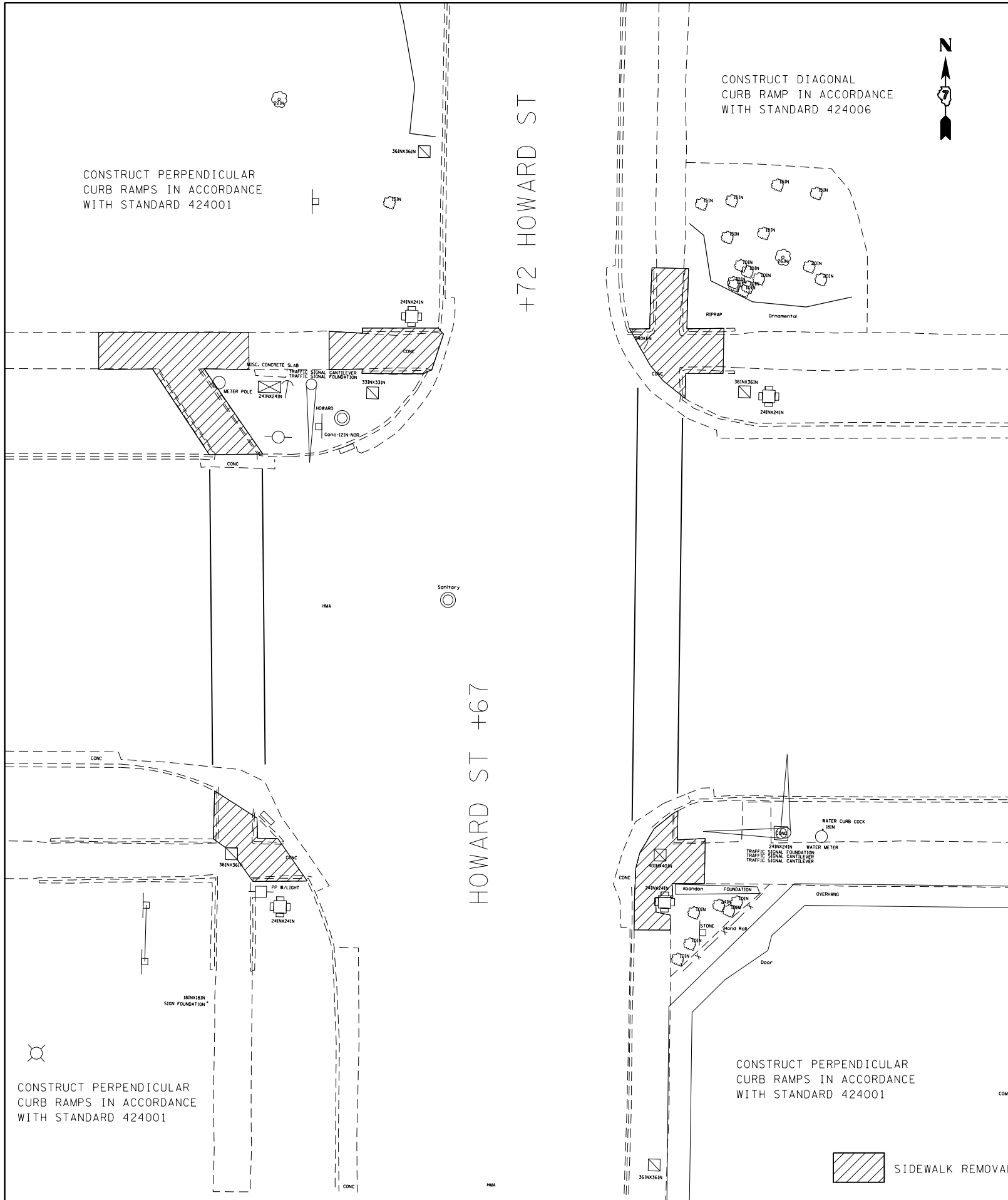


CONSTRUCT PERPENDICULAR CURB RAMPS IN ACCORDANCE WITH STANDARD 424001

+72 HOWARD ST

CONSTRUCT DIAGONAL CURB RAMP IN ACCORDANCE WITH STANDARD 424006

HOWARD ST +67



HOWARD & MAIN								
PAY ITEM (UNIT)	QUADRANT							
	NW		NE		SW		SE	
	state	city	state	city	state	city	state	city
SIDEWALK REMOVAL (SQ FT)	178	83	111		68		87	
CURB REMOVAL (FOOT)								
COMB. CURB & GUTTER REMOVAL (FOOT)			12		27		20	
COMB. CONC. CURB & GUTTER, TYPE B-6.12 (FOOT)			12		27		20	
COMB. CONC. CURB & GUTTER, TYPE B-6.24 (FOOT)								
PCC SIDEWALK 4" (SQ FT)	178	83	111		16		87	
DETECTABLE WARNINGS (SQ FT)	8	10	8		16		16	
INLET TO BE ADJUSTED (EACH)					1			

FILE NAME =	USER NAME = steffenmk	DESIGNED -	REVISED -
ci:\pw\work\p\dot\stevfenmk\d0282300\074554-sht-sidewalk-details.dgn		DRAWN -	REVISED -
Default	PLOT SCALE = 16.0000' / in.	CHECKED -	REVISED -
	PLOT DATE = 4/5/2013	DATE -	REVISED -

**STATE OF ILLINOIS  
DEPARTMENT OF TRANSPORTATION**

**SIDEWALK DETAILS  
HOWARD STREET**

SCALE: SHEET OF 15 SHEETS STA. TO STA.

F.A.P. RTE.	SECTION	COUNTY	TOTAL SHEETS	SHEET NO.
781	(1Z,17Z)RS-1	CRAWFORD	60	38
CONTRACT NO. 74554			ILLINOIS FED. AID PROJECT	