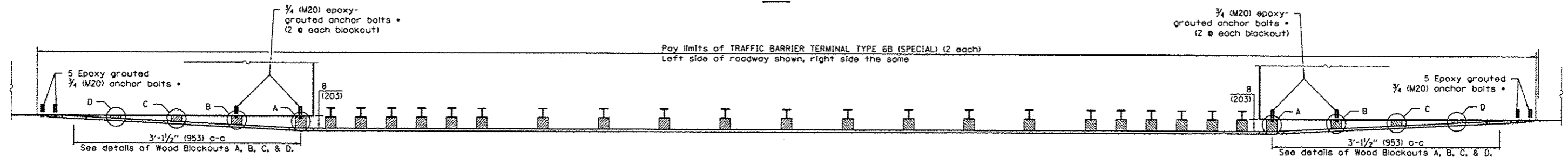


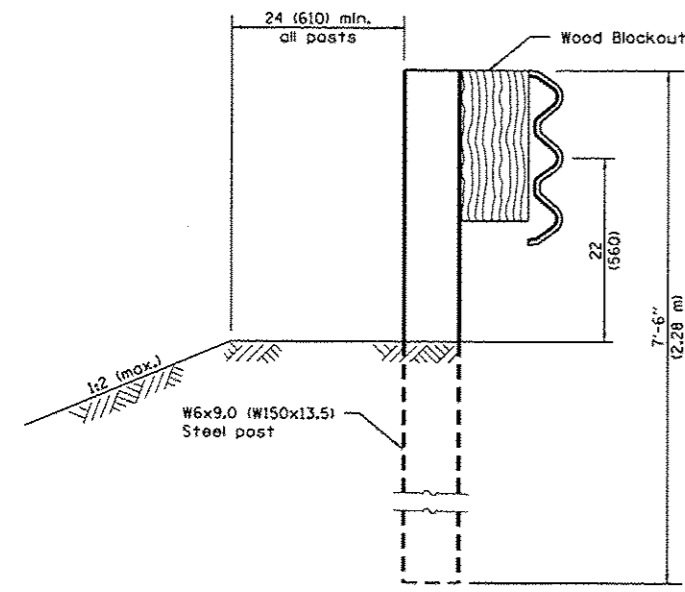
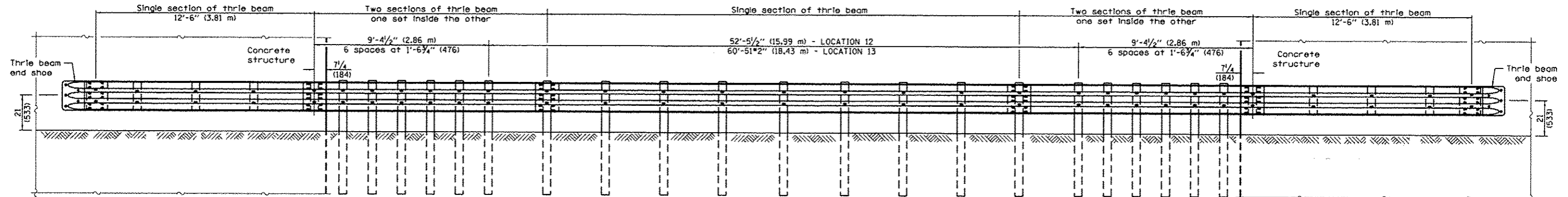
PLAN



• With standard washers. After tightening, cut the anchor bolts flush with the nuts and damage the nuts to prevent them from loosening.

• With standard washers. After tightening, cut the anchor bolts flush with the nuts and damage the nuts to prevent them from loosening.

ELEVATION



SECTION A-A

GENERAL NOTES

- See Standard 631033 for details of guardrail not shown.
- The thrile beam will need to be cut and drilled to accommodate spacing between the two structures
- Thrile beam rail shall be bolted to block-out at all posts.
- All slope ratios are expressed as units of vertical displacement to units of horizontal displacement (V:H).
- All dimensions are in inches (millimeters) unless otherwise shown.

FILE NAME =	USER NAME = gstaffanek	DESIGNED -	REVISED -	STATE OF ILLINOIS DEPARTMENT OF TRANSPORTATION	DETAIL FOR TRAFFIC BARRIER TERMINAL TYPE 6B (SPECIAL)	F.A. RTE.	SECTION	COUNTY	TOTAL SHEETS	SHEET NO.	
ct:\pvc\work\pvidot\staffanek\080365715\077	4645-shr-detailed.dgn	DRAWN -	REVISED -			VAR.	D7 SAFETY 2014-1	VARIOUS	20	15	
Defaults	PLOT SCALE = 48.0000 1/ in.	CHECKED -	REVISED -			CONTRACT NO. 74645					
	PLOT DATE = 1/20/2014	DATE -	REVISED -			ILLINOIS FED. AID PROJECT					