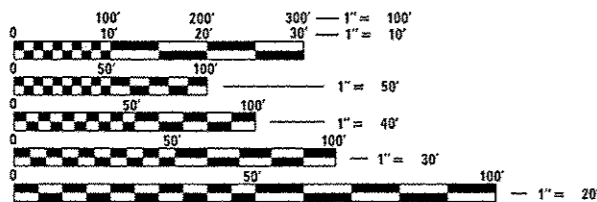
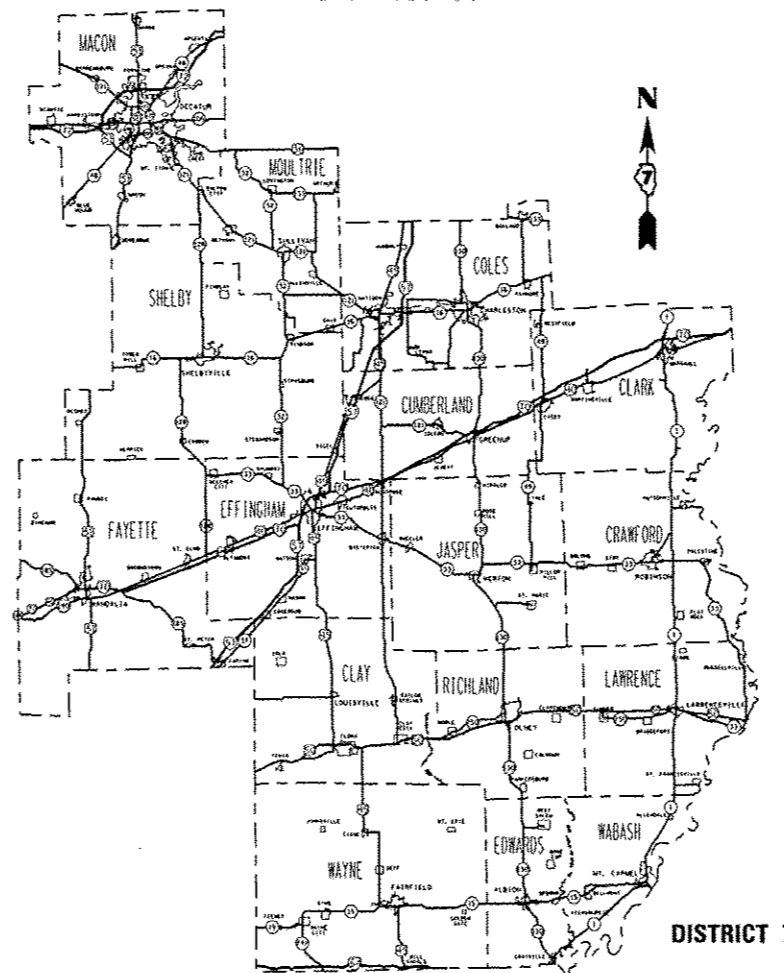


STATE OF ILLINOIS
DEPARTMENT OF TRANSPORTATION
DIVISION OF HIGHWAYS

**PROPOSED
HIGHWAY PLANS**

VARIOUS ROUTES
SECTION D7 SAFETY 2014-1
PROJECT ACHSIP - 0005 (980)
SAFETY IMPROVEMENTS
VARIOUS COUNTIES

C-97-009-14



FULL SIZE PLANS HAVE BEEN PREPARED USING STANDARD ENGINEERING SCALES. REDUCED SIZED PLANS WILL NOT CONFORM TO STANDARD SCALES. IN MAKING MEASUREMENTS ON REDUCED PLANS, THE ABOVE SCALES MAY BE USED.

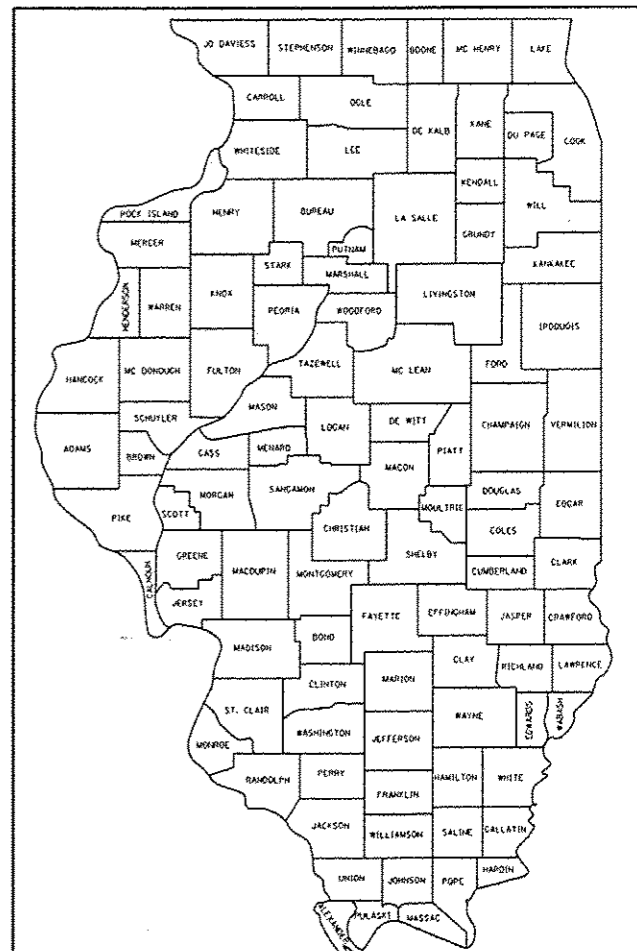
J.U.L.I.E.
JOINT UTILITY LOCATION INFORMATION FOR EXCAVATION
1-800-892-0123
OR 811

PROJECT ENGINEER MARK DAUGHERTY
PROJECT MANAGER MATT BOWER

CONTRACT NO. 74645

F.A. RTE.	SECTION	COUNTY	TOTAL SHEETS	SHEET NO.
VAR.	D7 SAFETY 2014-1	VARIOUS	20	1
		ILLINOIS	CONTRACT NO. 74645	

D-97-004-14



LOCATION OF SECTION INDICATED THUS: - [thick black line] -

STATE OF ILLINOIS
DEPARTMENT OF TRANSPORTATION
DIVISION OF HIGHWAYS

SUBMITTED JAN 27 20 14
Roger L. Drishell
DEPUTY DIRECTOR OF HIGHWAYS, REGION ENGINEER

MARCH 21 20 14
John D. Baranzelli
ENGINEER OF DESIGN AND ENVIRONMENT

MARCH 21 20 14
Omer Osman
DIRECTOR OF HIGHWAYS, CHIEF ENGINEER

PRINTED BY THE AUTHORITY
OF THE STATE OF ILLINOIS

INDEX OF SHEETS

SHEET NO. DESCRIPTION

- 1 COVER SHEET
- 2 INDEX OF SHEETS, HIGHWAY STANDARDS, & GENERAL NOTES
- 3 LOCATOIN MAP
- 4 SUMMARY OF QUANTITIES
- 5-6 SCHEDULE OF QUANTITIES
- 7-14 GUARDRAIL DETAILS
- 15 DETAIL FOR TRAFFIC BARRIER TERMINAL TYPE 6B (SPECIAL)
- 16-17 DETAIL OF CRASHWALL EXTENSION
- 18-19 DETAIL OF IMPACT ATTENUATORS (NON-REDIRECTIVE) TEST LEVEL 3 ARRAY
- 20 DETAIL OF TRAFFIC CONTROL AND PROTECTION, (SPECIAL)

HIGHWAY STANDARDS

STANDARD NO. DESCRIPTION

- 000001-06 STANDARD SYMBOLS, ABBREVIATIONS, AND PATTERNS
- 001001-02 AREAS OF REINFORCEMENT BARS
- 001006 DECIMAL OF AN INCH AND OF A FOOT
- 606001-05 CONCRETE CURB TYPE B AND COMBINATION CONCRETE CURB AND GUTTER
- 630001-10 STEEL PLATE BEAM GUARDRAIL
- 630101-09 GUARDRAIL MOUNTED ON EXISTING CULVERTS
- 630301-06 SHOULDER WIDENING FOR TYPE 1 (SPECIAL) GUARDRAIL TERMINALS
- 631011-09 TRAFFIC BARRIER TERMINAL, TYPE 2
- 631033-05 TRAFFIC BARRIER TERMINAL, TYPE 6B
- 635006-03 REFLECTOR AND TERMINAL MARKER PLACEMENT
- 635011-02 REFLECTOR MARKER AND MOUNTING DETAILS
- 643001-02 SAND MODULE IMPACT ATTENUATORS
- 701001-02 OFF-RD OPERATIONS, 2L, 2W, MORE THAN 15' (4.5m) AWAY
- 701006-05 OFF-RD OPERATIONS, 2L, 2W, 15' (4.5m) TO 24" (600 mm) FROM PAVEMENT EDGE
- 701101-04 OFF-RD OPERATIONS, MULTILANE, 15' (4.5m) TO 24" (600 mm) FROM PAVEMENT EDGE
- 701106-02 OFF-RD OPERATIONS MULTILANE, MORE THAN 15' (4.5m) AWAY
- 701201-04 LANE CLOSURE, 2L, 2W, DAY ONLY, FOR SPEEDS => 45 MPH
- 701421-06 LANE CLOSURE, MULTILANE, DAY OPERATIONS ONLY, FOR SPEEDS => 45 MPH TO 55 MPH
- 701901-03 TRAFFIC CONTROL DEVICES
- 782001 PRISMATIC CURB REFLECTORS

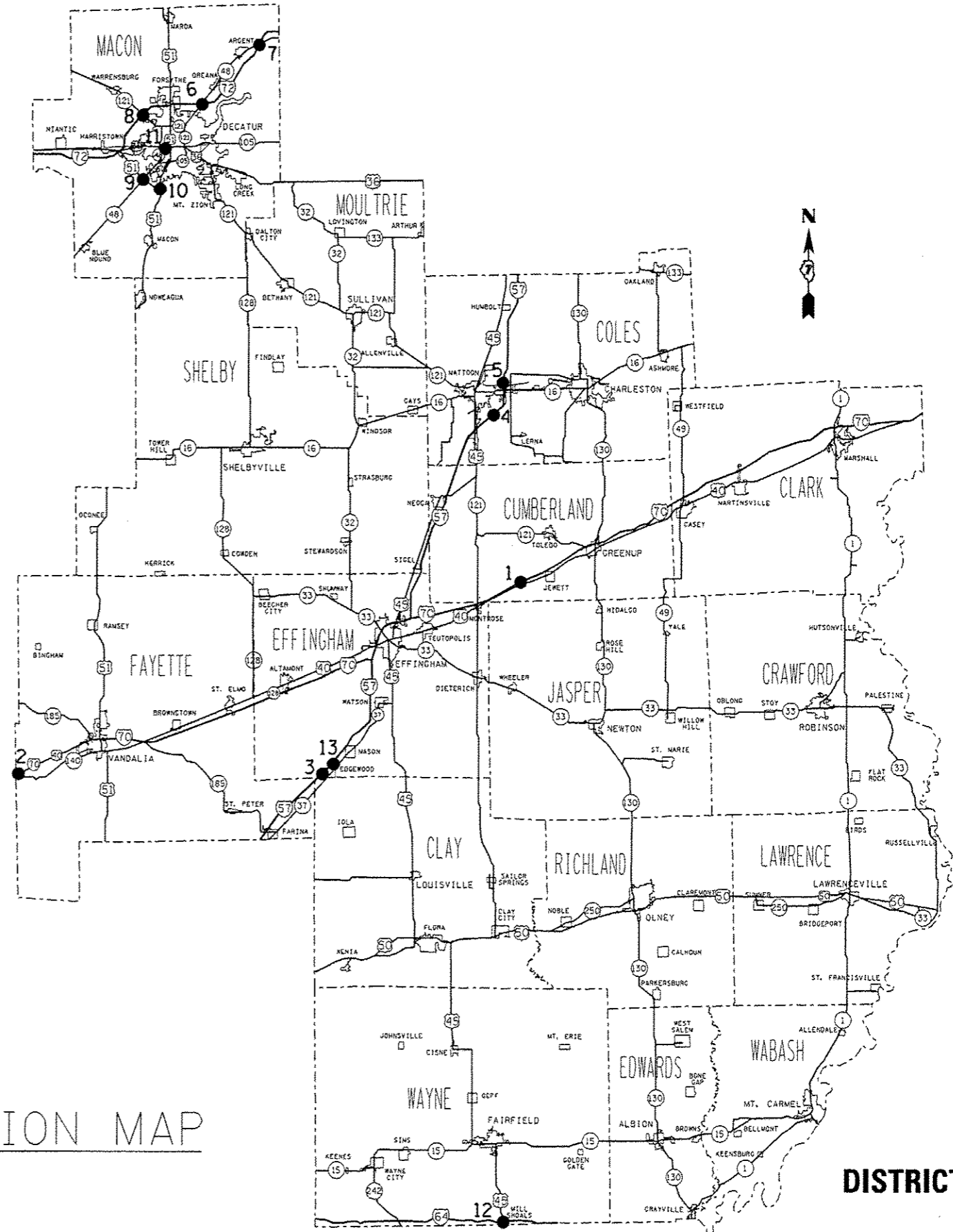
GENERAL NOTES

THIS SECTION SHALL BE CONSTRUCTED IN ACCORDANCE WITH THE PLANS, THE "STANDARD SPECIFICATIONS FOR ROAD AND BRIDGE CONSTRUCTION", ADOPTED JANUARY 1, 2012; THE "SUPPLEMENTAL SPECIFICATIONS AND RECURRING SPECIAL PROVISIONS" INDICATED ON THE CHECK SHEET, AND THE SPECIAL PROVISIONS INCLUDED IN THE PROPOSAL.

ALL DISTURBED AREAS WITHIN THE CONSTRUCTION LIMITS SHALL BE FERTILIZED AND SEEDDED. SEEDING SHALL BE CLASS 2 IN ACCORDANCE WITH THE SPECIAL PROVISIONS AND THE APPLICABLE ARTICLES OF SECTION 250 OF THE STANDARD SPECIFICATIONS.

FILE NAME =	USER NAME = staffanm	DESIGNED -	REVISED -	STATE OF ILLINOIS DEPARTMENT OF TRANSPORTATION	INDEX OF SHEETS, HIGHWAY STANDARDS, & GENERAL NOTES	F.A. RTE.	SECTION	COUNTY	TOTAL SHEETS	SHEET NO.	
c:\pwork\p\p\dot\staffanm\0305715\07	4645-shs-gennote.dgn	DRAWN -	REVISED -			VAR.	07 SAFETY 2014-1	VARIOUS	20	2	
Default	PLOT SCALE = 48.0000 ' / in.	CHECKED -	REVISED -			CONTRACT NO. 74645					
	PLOT DATE = 1/20/2014	DATE -	REVISED -			ILLINOIS FED. AID PROJECT					
					SCALE: N/A	SHEET	OF	SHEETS	STA.	TO STA.	

NUMBER	LOCATION	COUNTY
1	TOWNSHIP ROAD 950E UNDER I-70	CUMBERLAND
2	OLD IL 140 UNDER I-70	FAYETTE
3	BROAD ST. UNDER I-57 NEAR EDGEWOOD	EFFINGHAM
4	FAIRWAY VIEW CIRCLE UNDER I-57 NEAR MATTOON	COLES
5	DEWITT AVE (IL 316) UNDER I-57 IN MATTOON	COLES
6	IL 48 UNDER I-72 IN DECATUR	MACON
7	IL 48 UNDER I-72 NORTHEAST OF DECATUR	MACON
8	IL 121 UNDER I-72 IN DECATUR	MACON
9	IL 48 UNDER US 51 IN DECATUR	MACON
10	OLD US 51 OVER US 51 IN DECATUR	MACON
11	IL 105 UNDER CN RAILROAD IN DECATUR	MACON
12	US 45 UNDER I-64	WAYNE
13	750th ST UNDER I-57 NEAR EDGEWOOD	EFFINGHAM



LOCATION MAP

DISTRICT 7

FILE NAME =	USER NAME = staffarmk	DESIGNED -	REVISED -	STATE OF ILLINOIS DEPARTMENT OF TRANSPORTATION	LOCATION MAP	F.A. RTE.	SECTION	COUNTY	TOTAL SHEETS	SHEET NO.	
c:\pwork\spdot\staffarmk\0365715\074645-eh-coover.dgn	PLLOT SCALE = 40,0000' / in.	DRAWN -	REVISED -			VAR.	07 SAFETY 2014-1	VARIOUS	20	3	
Default	PLLOT DATE = 1/28/2014	CHECKED -	REVISED -			CONTRACT NO. 74645					
		DATE -	REVISED -			ILLINOIS FED. AID PROJECT					

SUMMARY OF QUANTITIES			CONSTRUCTION TYPE CODE
CODE NO	ITEM	UNIT	TOTAL QUANTITIES
20200100	EARTH EXCAVATION	CU YD	89
20400800	FURNISHED EXCAVATION	CU YD	96
28000250	TEMPORARY EROSION CONTROL SEEDING	POUND	20
44000500	COMBINATION CURB AND GUTTER REMOVAL	FOOT	1698
44003100	MEDIAN REMOVAL	SQ FT	7977
48101200	AGGREGATE SHOULDERS, TYPE B	TON	206
50300225	CONCRETE STRUCTURES	CU YD	22.8
50800205	REINFORCEMENT BARS, EPOXY COATED	POUND	2270
60608250	COMBINATION CONCRETE CURB AND GUTTER, TYPE M-2.06	FOOT	867
60608300	COMBINATION CONCRETE CURB AND GUTTER, TYPE M-2.12	FOOT	831
60618300	CONCRETE MEDIAN SURFACE, 4 INCH	SQ FT	11170
63000001	STEEL PLATE BEAM GUARDRAIL, TYPE A, 6 FOOT POSTS	FOOT	3612.5
63000025	STEEL PLATE BEAM GUARDRAIL, ATTACHED TO STRUCTURES	FOOT	12.5
63100045	TRAFFIC BARRIER TERMINAL, TYPE 2	EACH	7

SUMMARY OF QUANTITIES			CONSTRUCTION TYPE CODE
CODE NO	ITEM	UNIT	TOTAL QUANTITIES
63100089	TRAFFIC BARRIER TERMINAL, TYPE 6B	EACH	4
63100167	TRAFFIC BARRIER TERMINAL, TYPE 1 (SPECIAL) TANGENT	EACH	23
63200310	GUARDRAIL REMOVAL	FOOT	124
64300450	IMPACT ATTENUATORS (NON-REDIRECTIVE), TEST LEVEL 3	EACH	4
67100100	MOBILIZATION	L SUM	1
70100310	TRAFFIC CONTROL AND PROTECTION, STANDARD 701421	L SUM	1
70100450	TRAFFIC CONTROL AND PROTECTION, STANDARD 701201	L SUM	1
78200300	PRISMATIC CURB REFLECTORS	EACH	56
78200410	GUARDRAIL MARKERS, TYPE A	EACH	86
78201000	TERMINAL MARKER - DIRECT APPLIED	EACH	23
X2501000	SEEDING, CLASS 2 (SPECIAL)	ACRE	0.2
X6311217	TRAFFIC BARRIER TERMINAL, TYPE 6B (SPECIAL)	EACH	8
X7010216	TRAFFIC CONTROL AND PROTECTION, (SPECIAL)	L SUM	1
Z00486665	RAILROAD PROTECTIVE LIABILITY INSURANCE	L SUM	1

REV. 4-17-14

FILE NAME =	USER NAME = staffernk	DESIGNED -	REVISED -
o:\p\work\pvidot\staffernk\d0365715\07	74645-ent-500.dgn	DRAWN -	REVISED -
	PLOT SCALE = 48,2800' / in.	CHECKED -	REVISED -
Default	PLOT DATE = 1/28/2014	DATE -	REVISED -

STATE OF ILLINOIS
DEPARTMENT OF TRANSPORTATION

SUMMARY OF QUANTITIES

F.A. RTE.	SECTION	COUNTY	TOTAL SHEETS	SHEET NO.
VAR.	D7 SAFETY 2014-1	VARIOUS	20	4
			CONTRACT NO. 74645	
ILLINOIS FED. AID PROJECT				

SCALE: N/A SHEET OF SHEETS STA. TO STA.

48101200 AGGREGATE SHOULDERS TYPE B

NUMBER	LOCATION	COUNTY	SIDE OF ROAD	TONS
1	TOWNSHIP ROAD 950E UNDER I-70	CUMBERLAND	WEST	18.8
1	TOWNSHIP ROAD 950E UNDER I-71	CUMBERLAND	EAST	15.0
2	OLD IL 140 UNDER I-70	FAYETTE	NORTH	5.7
3	BROAD ST. UNDER I-57 NEAR EDGEWOOD	EFFINGHAM	WEST	22.8
4	FAIRWAY VIEW CIRCLE UNDER I-57 NEAR MATTOON	COLES	WEST	29.9
5	DEWITT AVE (IL 316) UNDER I-57 IN MATTOON	COLES	NORTH	23.7
6	IL 48 UNDER I-72 IN DECATUR	MACON	WEST	9.5
7	IL 48 UNDER I-72 NORTHEAST OF DECATUR	MACON	NORTH	49.0
8	IL 121 UNDER I-72 IN DECATUR	MACON	NORTH	8.5
9	IL 48 UNDER US 51 IN DECATUR	MACON	NORTH	7.9
10	OLD US 51 OVER US 51 IN DECATUR	MACON	EAST	8.2
13	750th ST UNDER I-57 NEAR EDGEWOOD	EFFINGHAM	EAST	3.2
13	751st ST UNDER I-57 NEAR EDGEWOOD	EFFINGHAM	WEST	3.5
TOTAL =				205.9

NOTE: AGGREGATE SHOULDERS SHALL BE USED ALONG GUARDRAIL AS DETERMINED BY THE ENGINEER.

USE = 206.0

60608250 COMBINATION CONCRETE CURB AND GUTTER, TYPE M-2.06

NUMBER	LOCATION	COUNTY	FOOT
13	750th ST UNDER I-57 NEAR EDGEWOOD	EFFINGHAM	867.0
TOTAL =			867.0

60608300 COMBINATION CONCRETE CURB & GUTTER, TYPE M-2.12

NUMBER	LOCATION	COUNTY	FOOT
12	US 45 UNDER I-64	WAYNE	831.0
TOTAL =			831.0

60618300 CONCRETE MEDIAN SURFACE, 4"

NUMBER	LOCATION	COUNTY	SQ FT
12	US 45 UNDER I-64	WAYNE	5386.0
13	750th ST UNDER I-57 NEAR EDGEWOOD	EFFINGHAM	5784.0
TOTAL =			11170.0

EARTHWORK AND SEEDING SCHEDULE

NUMBER	LOCATION	COUNTY	SIDE OF ROAD	CU YD	CU YD	LB	ACRE
4	FAIRWAY VIEW CIRCLE UNDER I-57 NEAR MATTOON	COLES	WEST	0	68	10.5	0.105
6	IL 48 UNDER I-72 IN DECATUR	MACON	WEST	0	4	1.3	0.013
7	IL 48 UNDER I-72 NORTHEAST OF DECATUR	MACON	NORTH	0	4	1.3	0.013
8	IL 121 UNDER I-72 IN DECATUR	MACON	NORTH	0	4	1.3	0.013
9	IL 48 UNDER US 51 IN DECATUR	MACON	NORTH	0	4	1.3	0.013
10	OLD US 51 OVER US 51 IN DECATUR	MACON	EAST	0	4	1.3	0.013
12	US 45 UNDER I-64	WAYNE	CENTER	89			
13	750th ST UNDER I-57 NEAR EDGEWOOD	EFFINGHAM	WEST	0	8	2.6	0.026
TOTAL =				89	96	20	0.20

20200100 EARTH EXCAVATION
 20400800 FURNISHED EXCAVATION
 28000250 TEMPORARY EROSION CONTROL SEEDING
 X2501000 SEEDING CLASS 2

44000500 COMBINATION CURB AND GUTTER REMOVAL

NUMBER	LOCATION	COUNTY	FOOT
12	US 45 UNDER I-64	WAYNE	831.0
13	750th ST UNDER I-57 NEAR EDGEWOOD	EFFINGHAM	867.0
TOTAL =			1698.0

44003100 MEDIAN REMOVAL

NUMBER	LOCATION	COUNTY	SQ FT
12	US 45 UNDER I-64	WAYNE	2193.0
13	750th ST UNDER I-57 NEAR EDGEWOOD	EFFINGHAM	5784.0
TOTAL =			7977.0

GUARDRAIL SCHEDULES

63000001 STEEL PLATE BEAM GUARDRAIL, TYPE A, 6 FOOT POSTS
 63000025 STEEL PLATE BEAM GUARDRAIL, ATTACHED TO STRUCTURES
 63100045 TRAFFIC BARRIER TERMINAL, TYPE 2
 63100089 TRAFFIC BARRIER TERMINAL, TYPE 6B
 63100167 TRAFFIC BARRIER TERMINAL, TYPE 1 (SPECIAL) TANGENT
 78201000 TERMINAL MARKER - DIRECT APPLIED

NUMBER	LOCATION	COUNTY	SIDE OF ROAD	FT	FT	EA	EA	EA	EA
1	TOWNSHIP ROAD 950E UNDER I-70	CUMBERLAND	WEST	212.5				2.0	2.0
1	TOWNSHIP ROAD 950E UNDER I-70	CUMBERLAND	EAST	237.5				2.0	2.0
2	OLD IL 140 UNDER I-70	FAYETTE	NORTH	225.0				2.0	2.0
3	BROAD ST. UNDER I-57 NEAR EDGEWOOD	EFFINGHAM	WEST	300.0				2.0	2.0
4	FAIRWAY VIEW CIRCLE UNDER I-57 NEAR MATTOON	COLES	WEST	162.5				2.0	2.0
5	DEWITT AVE (IL 316) UNDER I-57 IN MATTOON	COLES	NORTH	212.5	12.5			2.0	2.0
6	IL 48 UNDER I-72 IN DECATUR	MACON	WEST	312.5		1.0		1.0	1.0
7	IL 48 UNDER I-72 NORTHEAST OF DECATUR	MACON	NORTH	325.0		1.0		1.0	1.0
8	IL 121 UNDER I-72 IN DECATUR	MACON	NORTH	275.0		1.0		1.0	1.0
9	IL 48 UNDER US 51 IN DECATUR	MACON	NORTH	250.0		1.0		1.0	1.0
10	OLD US 51 OVER US 51 IN DECATUR	MACON	EAST	262.5		1.0		1.0	1.0
11	IL 105 UNDER CN RAILROAD IN DECATUR	MACON	NORTH	100.0			1.0	1.0	1.0
11	IL 105 UNDER CN RAILROAD IN DECATUR	MACON	CENTER	200.0			2.0	2.0	2.0
11	IL 105 UNDER CN RAILROAD IN DECATUR	MACON	SOUTH	100.0			1.0	1.0	1.0
13	750th ST UNDER I-57 NEAR EDGEWOOD	EFFINGHAM	EAST	212.5		1.0		1.0	1.0
13	750th ST UNDER I-57 NEAR EDGEWOOD	EFFINGHAM	WEST	225.0		1.0		1.0	1.0
TOTAL=				3612.5	12.5	7	4	23	23

64300450 IMPACT ATTENUATORS (NON-REDIRECTIVE), TEST LEVEL 3

NUMBER	LOCATION	COUNTY	EA
12	US 45 UNDER I-64	WAYNE	2.0
13	750th ST UNDER I-57 NEAR EDGEWOOD	EFFINGHAM	2.0
TOTAL=			4.0

78200410 GUARDRAIL MARKERS, TYPE A

NUMBER	LOCATION	COUNTY	EA
1	TOWNSHIP ROAD 950E UNDER I-70	CUMBERLAND	8.0
2	OLD IL 140 UNDER I-70	FAYETTE	4.0
3	BROAD ST. UNDER I-57 NEAR EDGEWOOD	EFFINGHAM	5.0
4	FAIRWAY VIEW CIRCLE UNDER I-57 NEAR MATTOON	COLES	4.0
5	DEWITT AVE (IL 316) UNDER I-57 IN MATTOON	COLES	4.0
6	IL 48 UNDER I-72 IN DECATUR	MACON	4.0
7	IL 48 UNDER I-72 NORTHEAST OF DECATUR	MACON	5.0
8	IL 121 UNDER I-72 IN DECATUR	MACON	4.0
9	IL 48 UNDER US 51 IN DECATUR	MACON	4.0
10	OLD US 51 OVER US 51 IN DECATUR	MACON	4.0
11	IL 105 UNDER CN RAILROAD IN DECATUR	MACON	16.0
12	US 45 UNDER I-64	WAYNE	8.0
13	750th ST UNDER I-57 NEAR EDGEWOOD	EFFINGHAM	16.0
TOTAL=			86.0

78200300 PRISMATIC CURB REFLECTORS

NUMBER	LOCATION	COUNTY	EA
12	US 45 UNDER I-64	WAYNE	30.0
13	750th ST UNDER I-57 NEAR EDGEWOOD	EFFINGHAM	26.0
TOTAL=			56.0

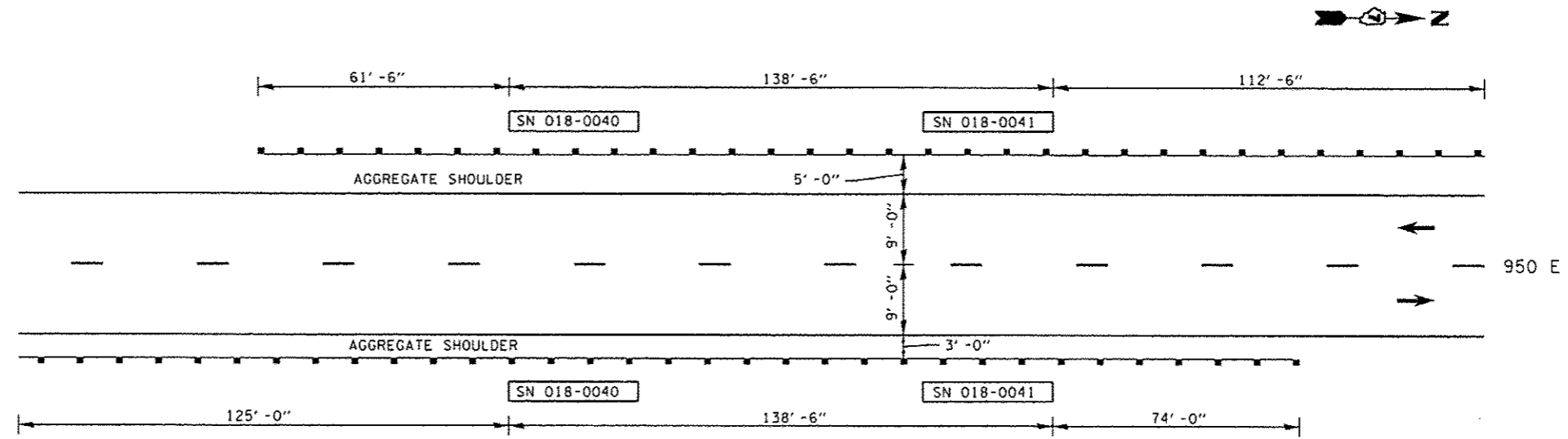
X6311217 TRAFFIC BARRIER TERMINAL, TYPE 6B (SPECIAL)

NUMBER	LOCATION	COUNTY	EACH
12	US 45 UNDER I-64	WAYNE	4.0
13	750th ST UNDER I-57 NEAR EDGEWOOD	EFFINGHAM	4.0
TOTAL=			8.0

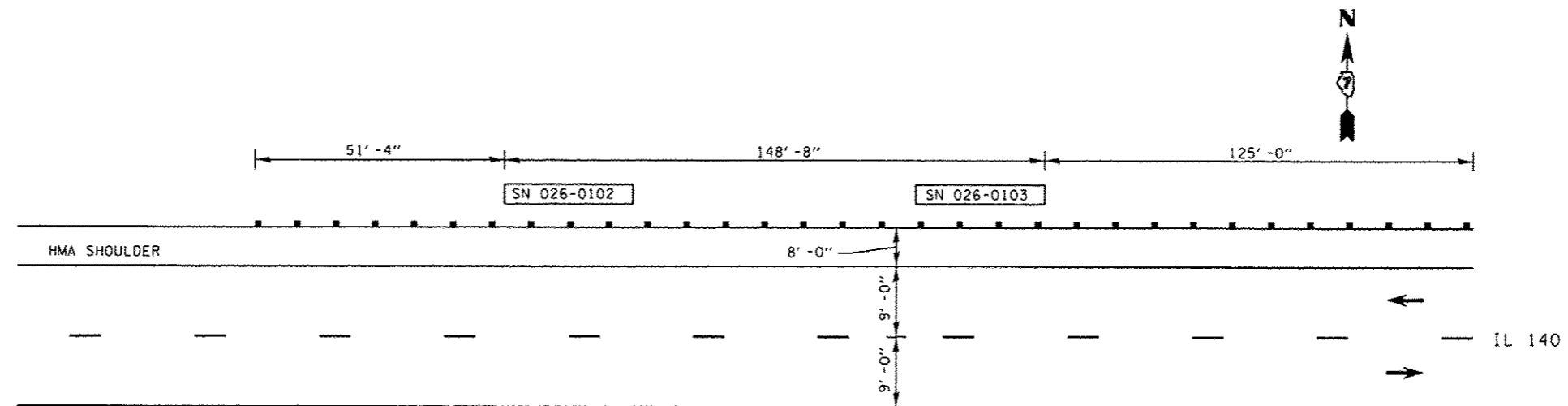
63200310 GUARDRAIL REMOVAL

NUMBER	LOCATION	COUNTY	FOOT
4	FAIRWAY VIEW CIRCLE UNDER I-57 NEAR MATTOON	COLES	124.0
TOTAL=			124.0

LOCATION 1: TOWNSHIP ROAD 950E UNDER I-70 IN CUMBERLAND COUNTY

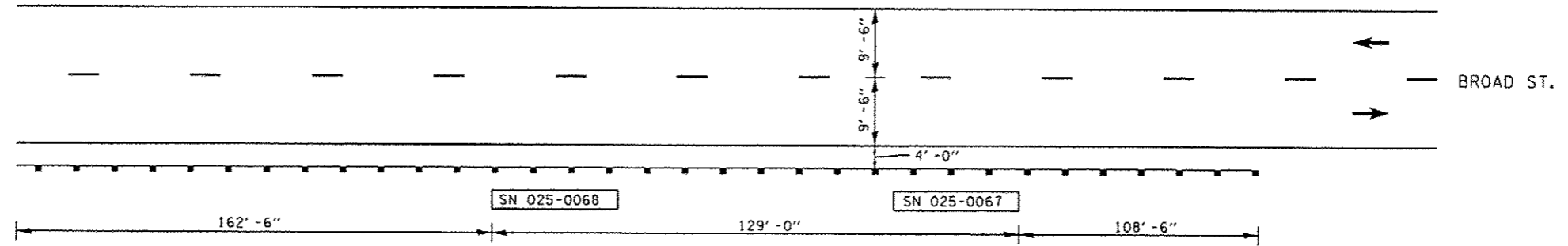


LOCATION 2: OLD IL 140 UNDER I-70 IN FAYETTE COUNTY

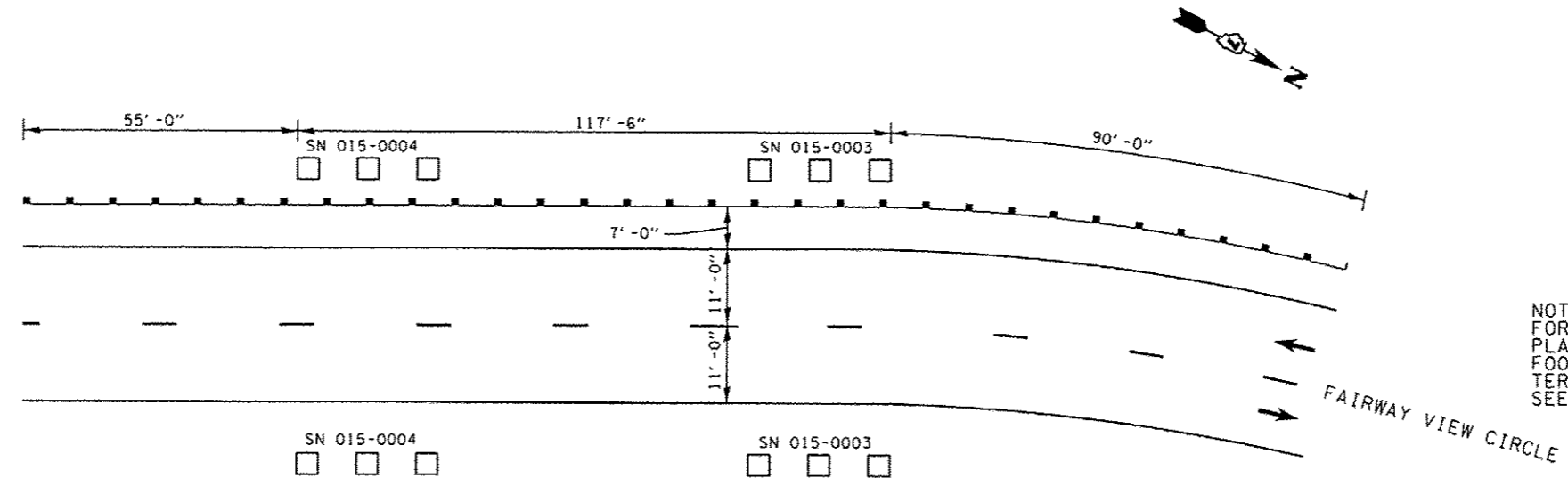


FILE NAME : c:\pr\work\pvidat\steffanmk\d8365715\074645-ahc\details.dgn	USER NAME : steffanmk	DESIGNED : -	REVISED : -	STATE OF ILLINOIS DEPARTMENT OF TRANSPORTATION	GUARDRAIL DETAILS			F.A. RTE.	SECTION	COUNTY	TOTAL SHEETS	SHEET NO.			
Default	PLOT SCALE : 48.0000 / in.	CHECKED : -	REVISED : -		SCALE: N/A	SHEET 1	OF 8	SHEETS	STA.	TO STA.	VAR.	D7 SAFETY 2014-1	VARIOUS	20	7
	PLOT DATE : 1/20/2014	DATE : -	REVISED : -		CONTRACT NO. 74645										
										ILLINOIS FED. AID PROJECT					

LOCATION 3: BROAD ST. UNDER I-57 NEAR EDGEWOOD



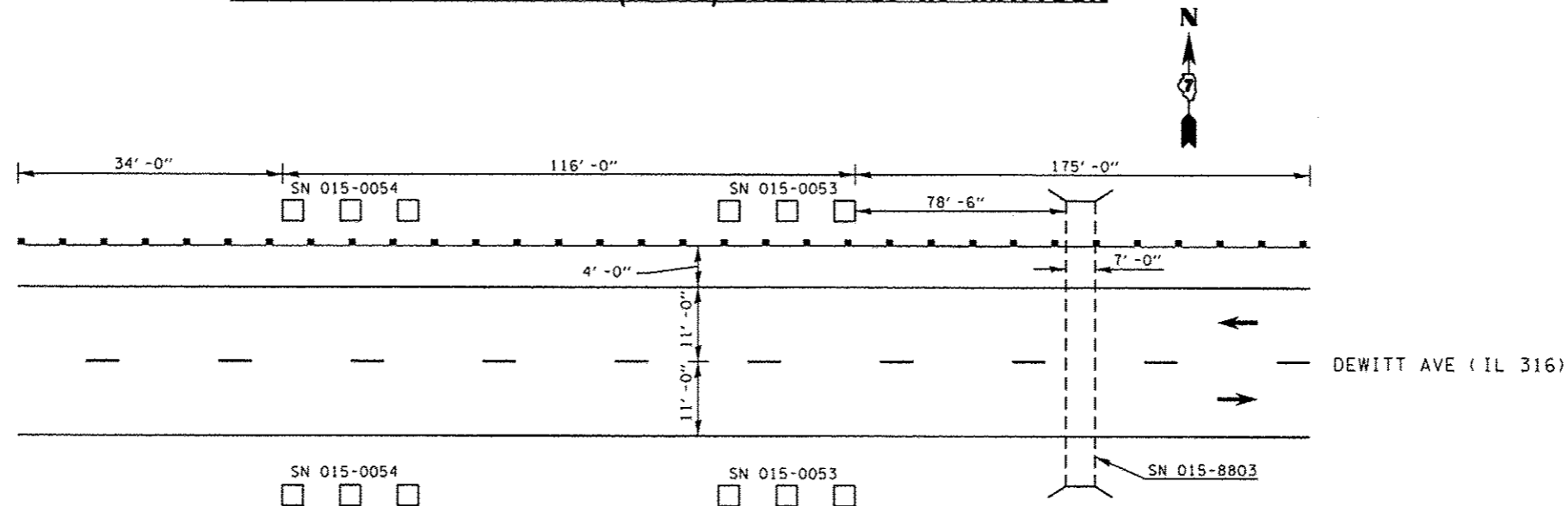
LOCATION 4: FAIRWAY VIEW CIRCLE UNDER I-57 NEAR MATTOON



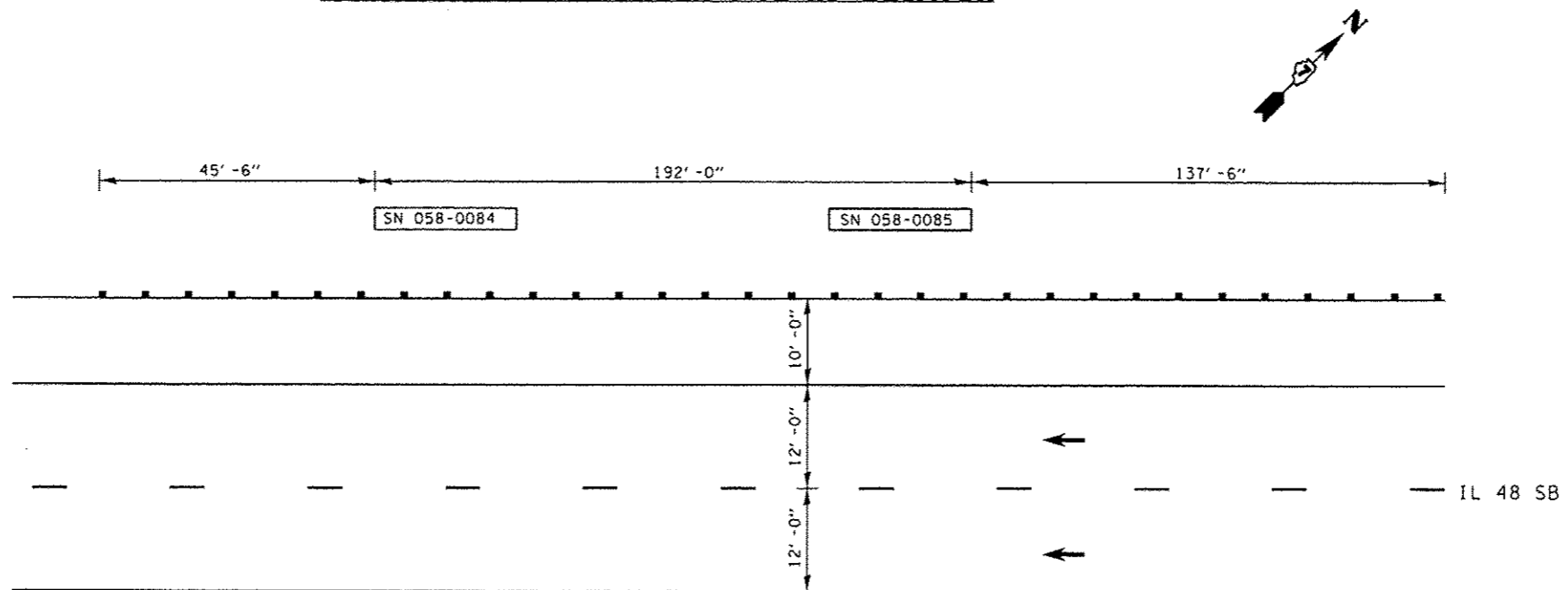
NOTE: FURNISHED EXCAVATION REQUIRED FOR SHOULDER WIDENING FOR STEEL PLATE BEAM GUARDRAIL, TYPE A, 6 FOOT POSTS AND TRAFFIC BARRIER TERMINAL, TYPE 1 (SPECIAL) TANGENT. SEE STANDARD 630301-06.

FILE NAME = o:\pwork\pvidat\stefFennk\d8365719\07	USER NAME = stefFennk #645-shc-details.dgn	DESIGNED - DRAWN -	REVISED - REVISED -	STATE OF ILLINOIS DEPARTMENT OF TRANSPORTATION	GUARDRAIL DETAILS				F.A. RTE.	SECTION	COUNTY	TOTAL SHEETS	SHEET NO.		
Default	PLOT SCALE = 48,0000 / in.	CHECKED -	REVISED -		SCALE: N/A	SHEET 2	OF 8	SHEETS	STA.	TO STA.	VAR.	D7 SAFETY 2014-1	VARIOUS	20	8
	PLOT DATE = 1/20/2014	DATE -	REVISED -		CONTRACT NO. 74645										
										ILLINOIS FED. AID PROJECT					

LOCATION 5: DEWITT AVE (IL 316) UNDER I-57 IN MATTOON



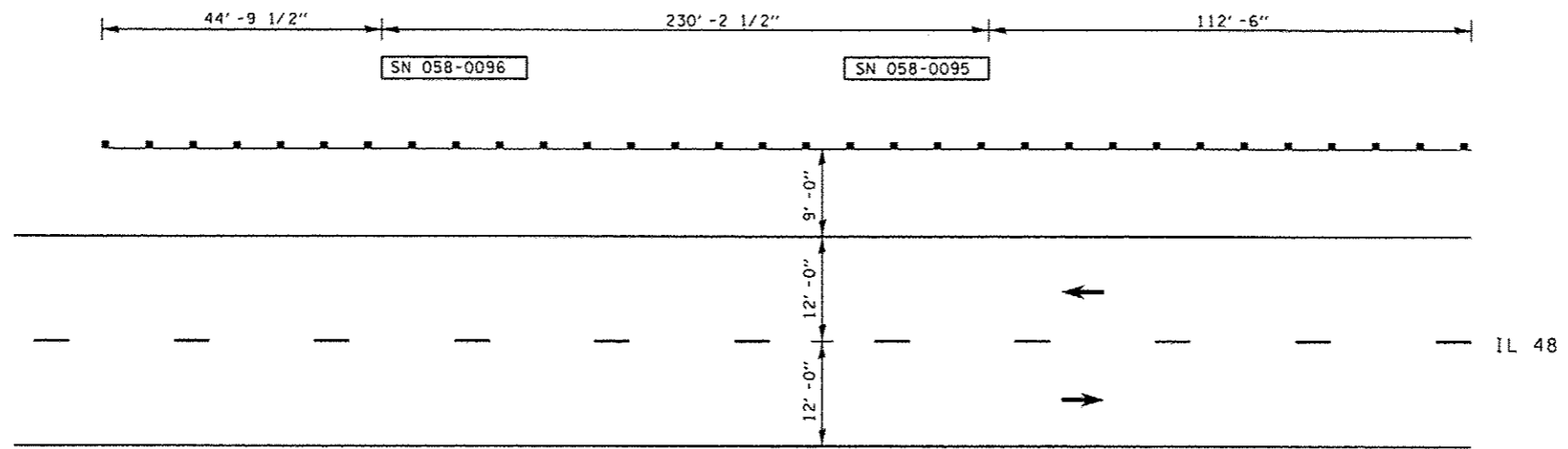
LOCATION 6: IL 48 UNDER I-72 IN DECATUR



NOTE: FURNISHED EXCAVATION REQUIRED FOR SHOULDER WIDENING FOR TRAFFIC BARRIER TERMINAL, TYPE 1 (SPECIAL) TANGENT. SEE STANDARD 630301-06.

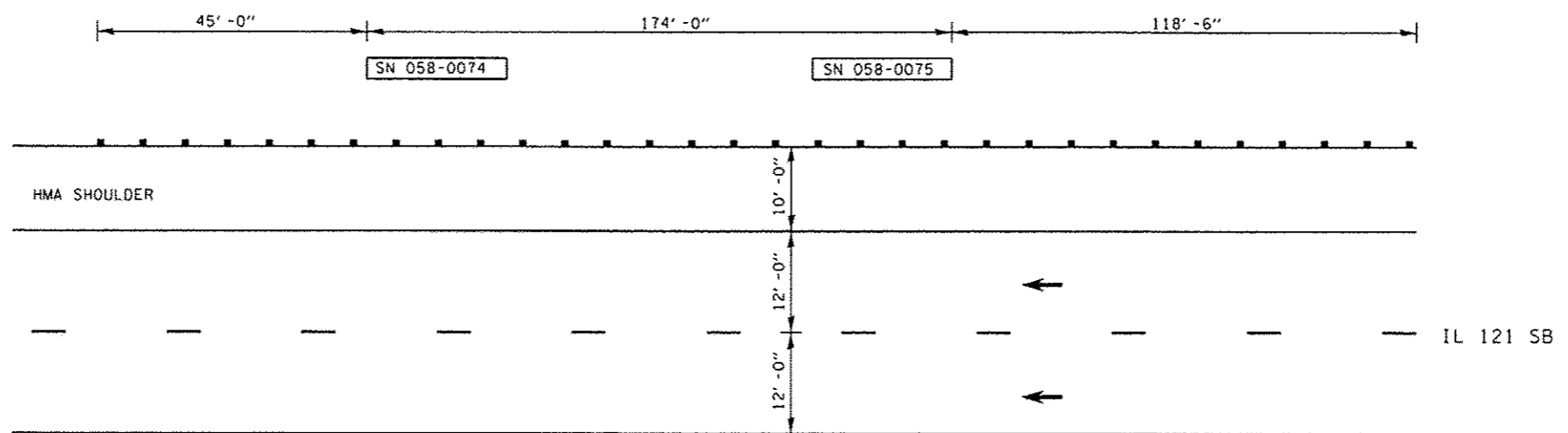
FILE NAME : c:\pwwork\pwwork\stoffer\l\0365715\0774645-shl-detail.dgn	USER NAME : stoffer	DESIGNED -	REVISED -	STATE OF ILLINOIS DEPARTMENT OF TRANSPORTATION	GUARDRAIL DETAILS			F.A. RTE.	SECTION	COUNTY	TOTAL SHEETS	SHEET NO.
Default	PLOT SCALE = 48.0000' / in.	DRAWN -	REVISED -					VAR.	D7 SAFETY 2014-1	VARIOUS	20	9
	PLOT DATE = 1/28/2014	CHECKED -	REVISED -		SCALE: N/A	SHEET 3	OF 8 SHEETS	STA.	TO STA.	CONTRACT NO. 74645		
		DATE -	REVISED -		ILLINOIS FED. AID PROJECT							

LOCATION 7: IL 48 UNDER I-72 NORTHEAST OF DECATUR



NOTE: FURNISHED EXCAVATION REQUIRED FOR SHOULDER WIDENING FOR TRAFFIC BARRIER TERMINAL, TYPE 1 (SPECIAL) TANGENT. SEE STANDARD 630301-06.

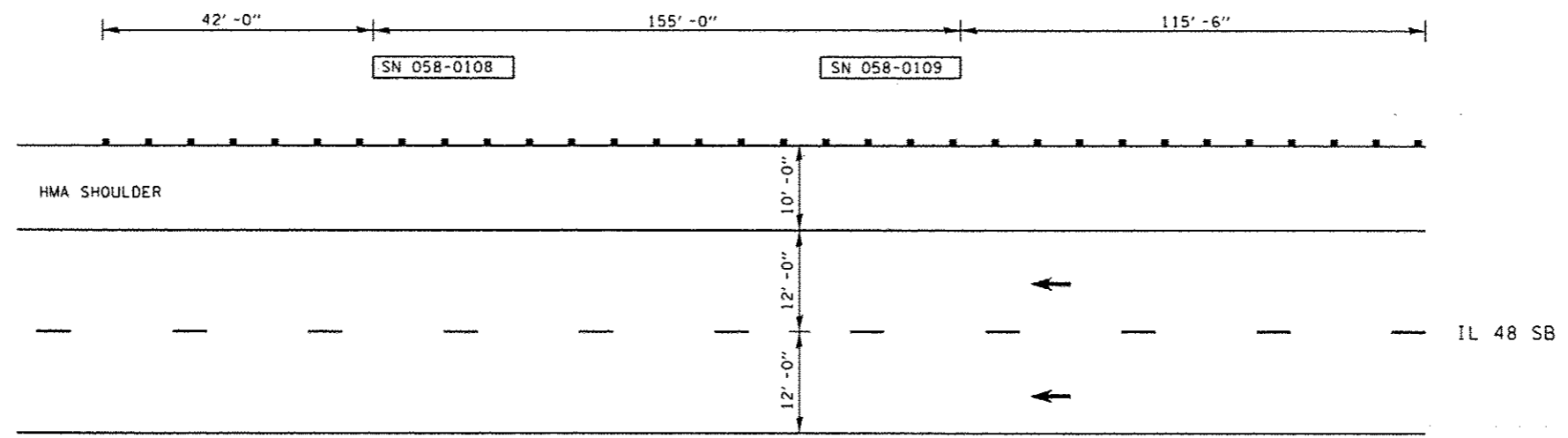
LOCATION 8: IL 121 UNDER I-72 IN DECATUR



NOTE: FURNISHED EXCAVATION REQUIRED FOR SHOULDER WIDENING FOR TRAFFIC BARRIER TERMINAL, TYPE 1 (SPECIAL) TANGENT. SEE STANDARD 630301-06.

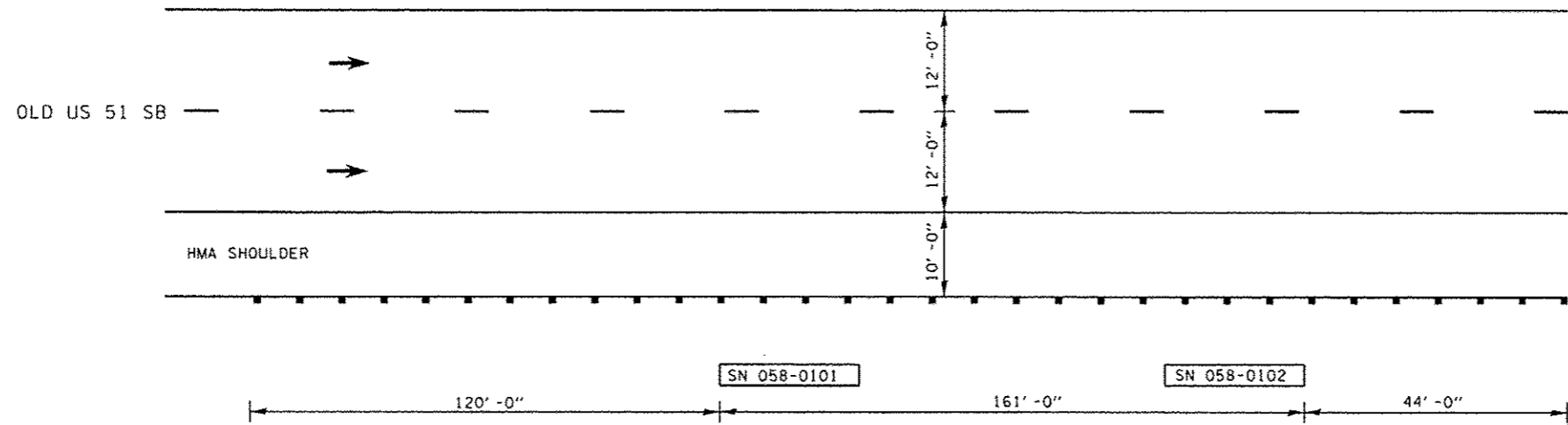
FILE NAME :	USER NAME : steffenk	DESIGNED -	REVISED -	STATE OF ILLINOIS DEPARTMENT OF TRANSPORTATION	GUARDRAIL DETAILS			F.A. RTE.	SECTION	COUNTY	TOTAL SHEETS	SHEET NO.
os\pwork\pwork\stefenk\0365715\07	74645-shd-details.dgn	DRAWN -	REVISED -					VAR.	07 SAFETY 2014-1	VARIOUS	20	10
Default	PLOT SCALE : 40.0000 ' / in.	CHECKED -	REVISED -		SCALE: N/A	SHEET 4	OF 8 SHEETS	STA.	TO STA.	CONTRACT NO. 74645	ILLINOIS FED. AID PROJECT	
	PLOT DATE : 1/29/2014	DATE -	REVISED -									

LOCATION 9: IL 48 UNDER US 51 IN DECATUR



NOTE: FURNISHED EXCAVATION REQUIRED FOR SHOULDER WIDENING FOR TRAFFIC BARRIER TERMINAL, TYPE 1 (SPECIAL) TANGENT. SEE STANDARD 630301-06.

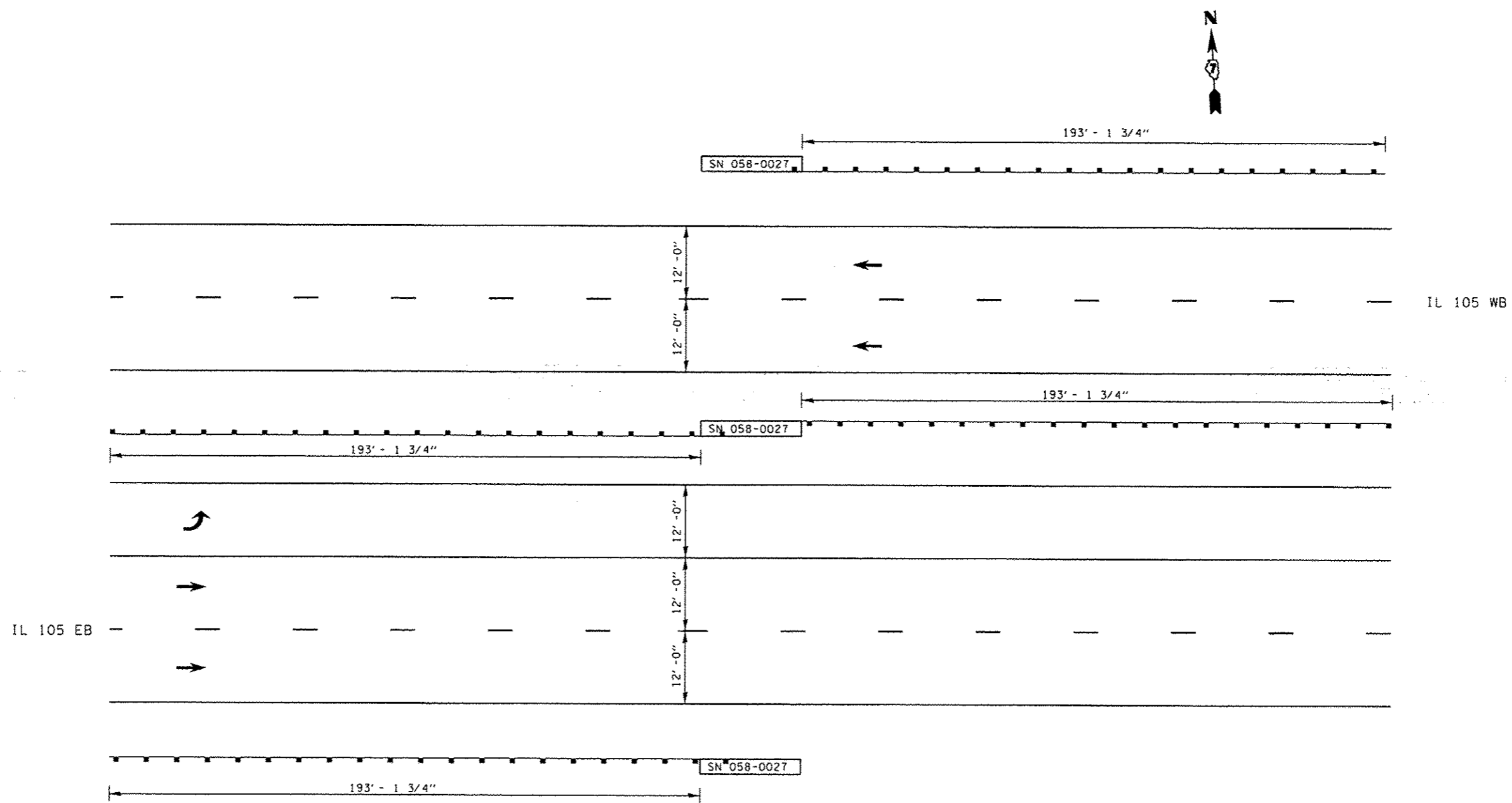
LOCATION 10: OLD US 51 OVER US 51 IN DECATUR



NOTE: FURNISHED EXCAVATION REQUIRED FOR SHOULDER WIDENING FOR TRAFFIC BARRIER TERMINAL, TYPE 1 (SPECIAL) TANGENT. SEE STANDARD 630301-06.

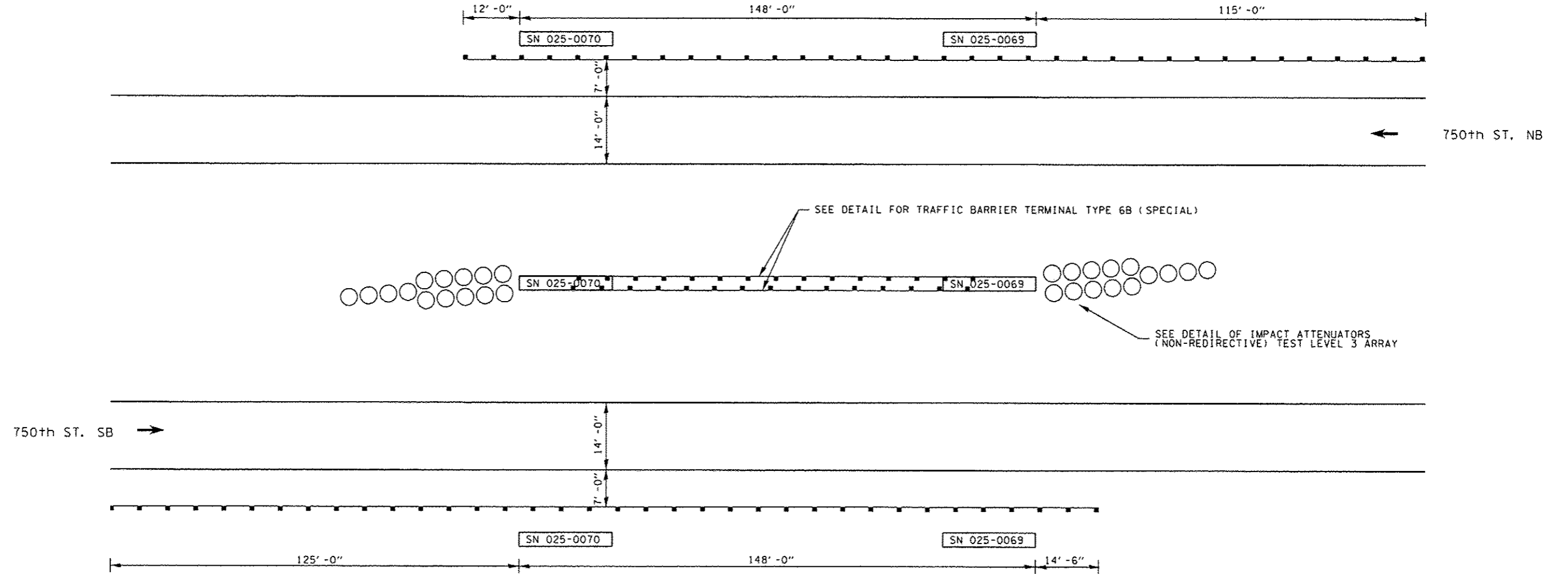
FILE NAME : c:\pwwork\pwwork\stoffer\0365715\074645-ahc-details.dgn	USER NAME : stoffer	DESIGNED -	REVISED -	STATE OF ILLINOIS DEPARTMENT OF TRANSPORTATION	GUARDRAIL DETAILS			F.A. RTE.	SECTION	COUNTY	TOTAL SHEETS	SHEET NO.
	PLOT SCALE = 48.0000' / in.	CHECKED -	REVISED -					VAR.	D7 SAFETY 2014-1	VARIOUS	20	11
Defaults	DATE -	REVISED -	SCALE: N/A		SHEET 5	OF 8	SHEETS	STA.	TO STA.	CONTRACT NO. 74645		
PLOT DATE = 1/28/2014										ILLINOIS FED. AID PROJECT		

LOCATION 11: IL 105 UNDER CN RAILROAD IN DECATUR



FILE NAME : c:\pwwork\puidot\steffenrk\d0365715\0774645-shd-details.dgn	USER NAME : steffrenrk	DESIGNED -	REVISED -	STATE OF ILLINOIS DEPARTMENT OF TRANSPORTATION	GUARDRAIL DETAILS			F.A. RTE.	SECTION	COUNTY	TOTAL SHEETS	SHEET NO.
	PLOT SCALE : 48.0000 ' / in.	CHECKED -	REVISED -					VAR.	07 SAFETY 2014-1	VARIOUS	20	12
Default	PLOT DATE : 1/28/2014	DATE -	REVISED -		SCALE: N/A	SHEET 6	OF 8 SHEETS	STA.	TO STA.	CONTRACT NO. 74645		
ILLINOIS FED. AID PROJECT												

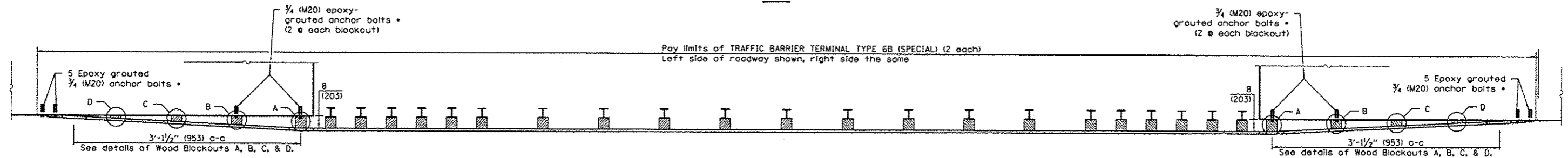
LOCATION 13: 750th ST UNDER I-57 NEAR EDGEWOOD



NOTE: FURNISHED EXCAVATION REQUIRED FOR SHOULDER WIDENING FOR TRAFFIC BARRIER TERMINAL, TYPE 1 (SPECIAL) TANGENT. SEE STANDARD 630301-06.

FILE NAME : c:\pwwork\spaidat\stoffernek\d0365715\0774645-shd-details.dgn	USER NAME : staffernk	DESIGNED -	REVISED -	STATE OF ILLINOIS DEPARTMENT OF TRANSPORTATION	GUARDRAIL DETAILS			F.A. RTE.	SECTION	COUNTY	TOTAL SHEETS	SHEET NO.
	PLOT SCALE = 48.0000' / in.	CHECKED -	REVISED -					VAR.	07 SAFETY 2014-1	VARIOUS	20	14
Default	PLOT DATE = 1/20/2014	DATE -	REVISED -	SCALE: N/A	SHEET 8	OF 8	SHEETS	STA.	TO STA.	ILLINOIS FED. AID PROJECT CONTRACT NO. 74645		

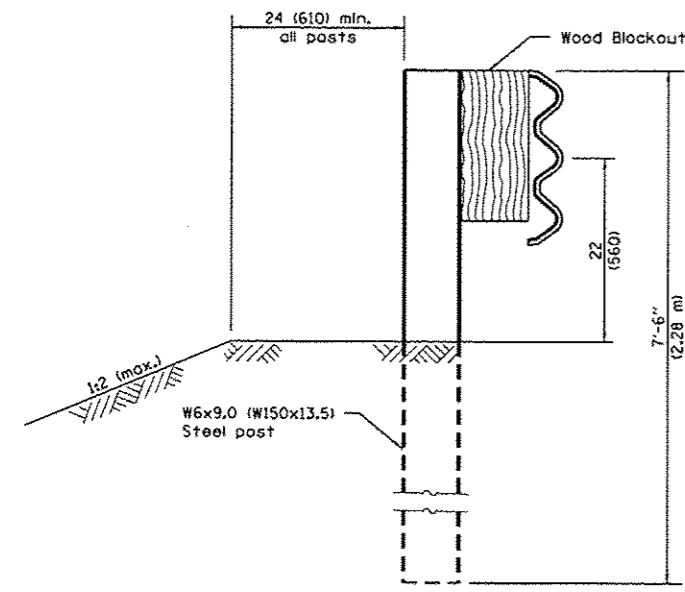
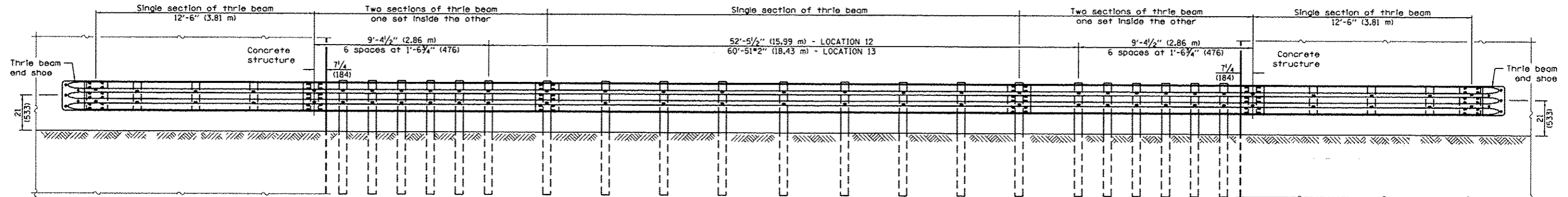
PLAN



• With standard washers. After tightening, cut the anchor bolts flush with the nuts and damage the nuts to prevent them from loosening.

• With standard washers. After tightening, cut the anchor bolts flush with the nuts and damage the nuts to prevent them from loosening.

ELEVATION



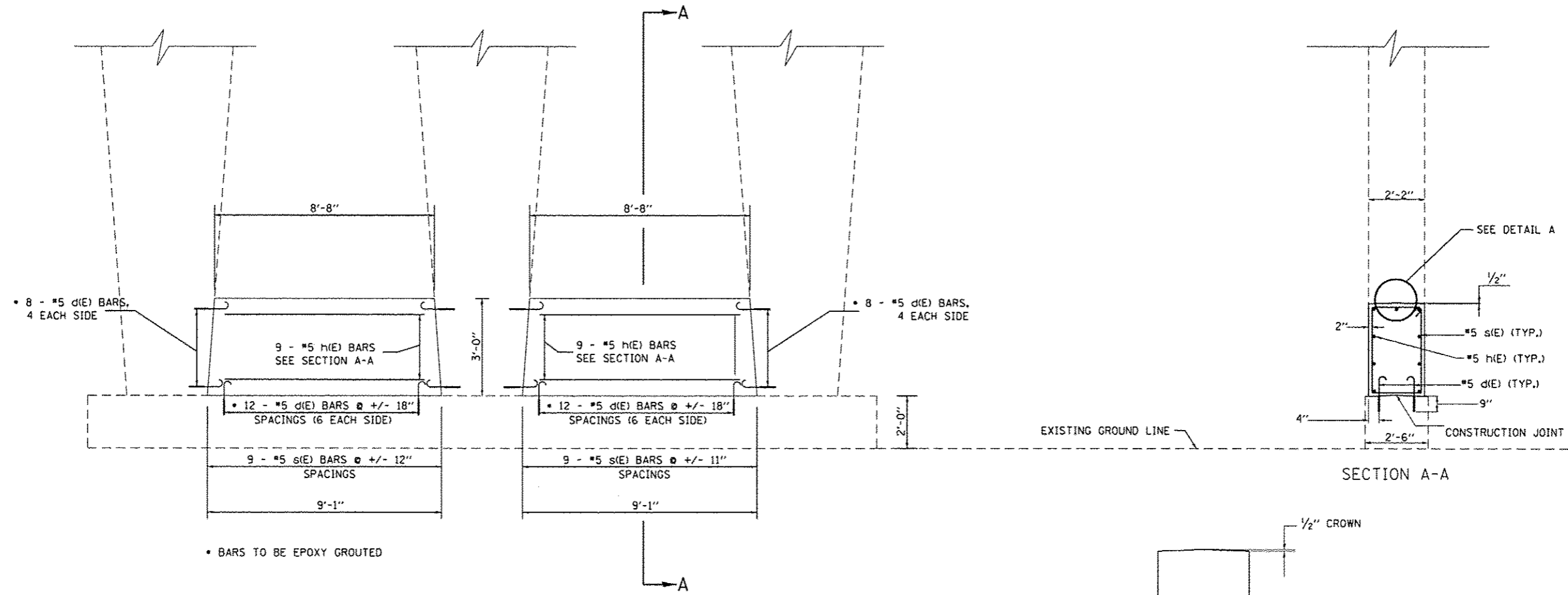
SECTION A-A

GENERAL NOTES

- See Standard 631033 for details of guardrail not shown.
- The thrile beam will need to be cut and drilled to accommodate spacing between the two structures
- Thrile beam rail shall be bolted to block-out at all posts.
- All slope ratios are expressed as units of vertical displacement to units of horizontal displacement (V:H).
- All dimensions are in inches (millimeters) unless otherwise shown.

FILE NAME =	USER NAME = gstaffanek	DESIGNED -	REVISED -	STATE OF ILLINOIS DEPARTMENT OF TRANSPORTATION	DETAIL FOR TRAFFIC BARRIER TERMINAL TYPE 6B (SPECIAL)		F.A. RTE.	SECTION	COUNTY	TOTAL SHEETS	SHEET NO.
ct:\pvc\work\pvidot\staffanek\080365715\077	4645-shr-detailed.dgn	DRAWN -	REVISED -				VAR.	D7 SAFETY 2014-1	VARIOUS	20	15
Defaults	PLOT SCALE = 48.0000 1/ in.	CHECKED -	REVISED -		SCALE: N/A	SHEET	OF	SHEETS	STA.	TO STA.	CONTRACT NO. 74645
	PLOT DATE = 1/20/2014	DATE -	REVISED -								ILLINOIS FED. AID PROJECT

DETAIL OF CRASHWALL EXTENSION

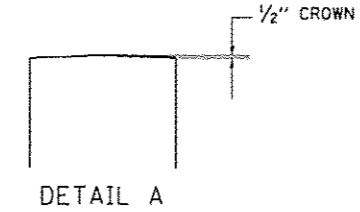
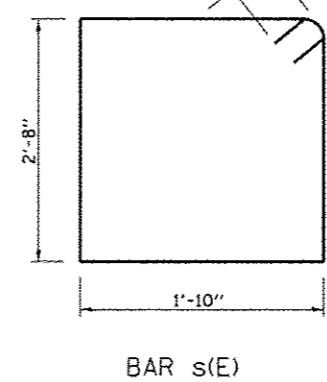
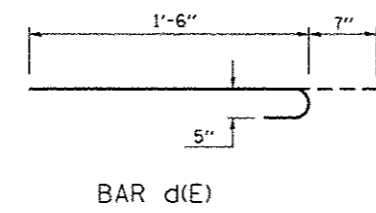


BILL OF MATERIALS

ITEM	UNIT	QUANTITY
CONCRETE STRUCTURES	CU.YD.	8.5
REINFORCEMENT BARS, EPOXY COATED	LB.	930

BAR TABLE

BAR	QTY.	SIZE	LENGTH	SHAPE
d(E)	112	#5	2'-1"	
s(E)	36	#5	9'-11"	
h(E)	36	#5	8'-4"	



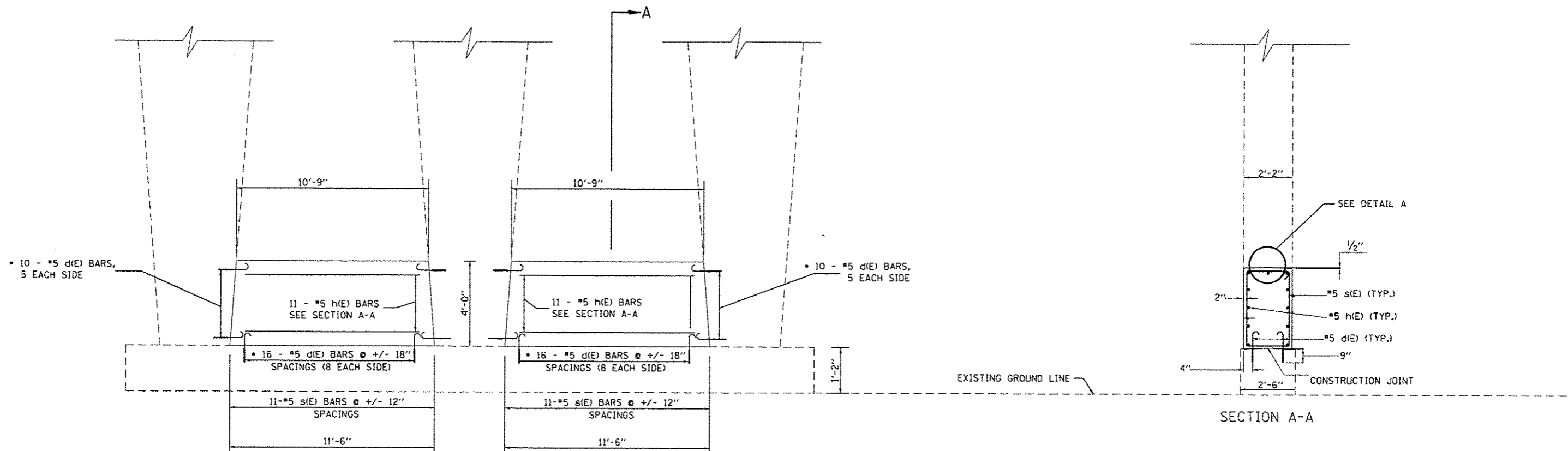
GENERAL NOTES

EPOXY GROUTING SHALL BE DONE IN ACCORDANCE WITH ARTICLE 584 OF THE STANDARD SPECIFICATIONS. THE DRILLED HOLES FOR THE d(E) BARS SHALL BE 1/4" LARGER THAN THE DIAMETER OF THE BAR. THE COST OF THE EPOXY GROUTING AND DRILLING SHALL BE INCLUDED IN THE COST OF REINFORCEMENT BARS, EPOXY COATED.

PLAN DIMENSIONS AND DETAILS RELATIVE TO THE EXISTING STRUCTURE HAVE BEEN TAKEN FROM EXISTING PLANS AND ARE SUBJECT TO NOMINAL CONSTRUCTION VARIATIONS. IT SHALL BE THE CONTRACTOR'S RESPONSIBILITY TO VERIFY SUCH DIMENSIONS AND DETAILS IN THE FIELD AND MAKE NECESSARY APPROVED ADJUSTMENTS PRIOR TO CONSTRUCTION OR ORDERING OF MATERIALS. SUCH VARIATIONS SHALL NOT BE CAUSE FOR ADDITIONAL COMPENSATION FOR A CHANGE IN THE SCOPE OF THE WORK. HOWEVER, THE CONTRACTOR WILL BE PAID FOR THE QUANTITY ACTUALLY FURNISHED AT THE UNIT PRICE FOR THE WORK.

REINFORCEMENT BARS LABELED (E) ARE EPOXY COATED BARS

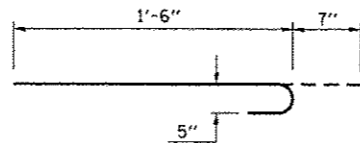
DETAIL OF CRASHWALL EXTENSION



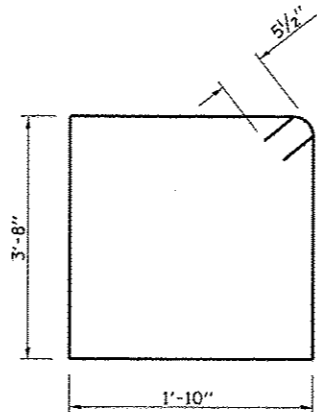
• BARS TO BE EPOXY GROUTED

BAR TABLE

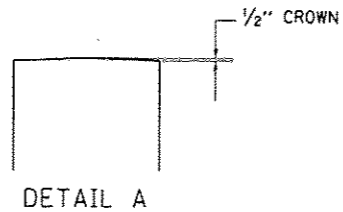
BAR	QTY.	SIZE	LENGTH	SHAPE
d(E)	144	#5	2'-1"	
s(E)	44	#5	11'-11"	
h(E)	44	#5	10'-5"	



BAR d(E)



BAR s(E)



DETAIL A

BILL OF MATERIALS

ITEM	UNIT	QUANTITY
CONCRETE STRUCTURES	CU.YD.	14.3
REINFORCEMENT BARS, EPOXY COATED	LB.	1340

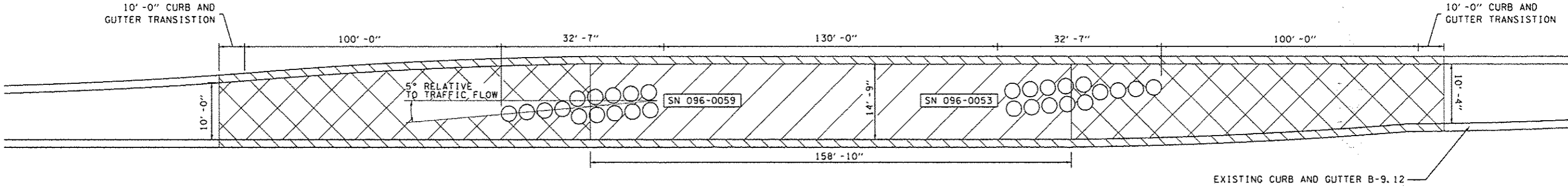
GENERAL NOTES

EPOXY GROUTING SHALL BE DONE IN ACCORDANCE WITH ARTICLE 584 OF THE STANDARD SPECIFICATIONS. THE DRILLED HOLES FOR THE d(E) BARS SHALL BE 1/4" LARGER THAN THE DIAMETER OF THE BAR. THE COST OF THE EPOXY GROUTING AND DRILLING SHALL BE INCLUDED IN THE COST OF REINFORCEMENT BARS, EPOXY COATED.

PLAN DIMENSIONS AND DETAILS RELATIVE TO THE EXISTING STRUCTURE HAVE BEEN TAKEN FROM EXISTING PLANS AND ARE SUBJECT TO NOMINAL CONSTRUCTION VARIATIONS. IT SHALL BE THE CONTRACTOR'S RESPONSIBILITY TO VERIFY SUCH DIMENSIONS AND DETAILS IN THE FIELD AND MAKE NECESSARY APPROVED ADJUSTMENTS PRIOR TO CONSTRUCTION OR ORDERING OF MATERIALS. SUCH VARIATIONS SHALL NOT BE CAUSE FOR ADDITIONAL COMPENSATION FOR A CHANGE IN THE SCOPE OF THE WORK. HOWEVER, THE CONTRACTOR WILL BE PAID FOR THE QUANTITY ACTUALLY FURNISHED AT THE UNIT PRICE FOR THE WORK.

REINFORCEMENT BARS LABELED (E) ARE EPOXY COATED BARS

LOCATION 12: US 45 UNDER I-64

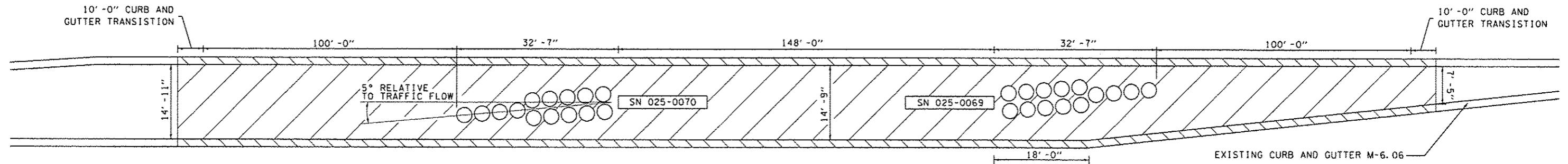


- 44003100 MEDIAN REMOVAL
 60618300 CONCRETE MEDIAN SURFACE, 4"
- 20200100 EARTH EXCAVATION
 60618300 CONCRETE MEDIAN SURFACE, 4"
- 44000500 COMBINATION CURB AND GUTTER REMOVAL
 60608300 COMBINATION CONCRETE CURB AND GUTTER, TYPE M-2.12

NOTES:
 1.) SEE HIGHWAY STANDARD 643001-02 SAND MODULE IMPACT ATTENUATORS FOR ADDITIONAL INFORMATION
 2.) CURB AND GUTTER TRANSITION COST INCLUDED IN COMBINATION CURB AND GUTTER, TYPE M-2.12

FILE NAME -	USER NAME - steffennk	DESIGNED -	REVISED -	STATE OF ILLINOIS DEPARTMENT OF TRANSPORTATION	DETAIL OF IMPACT ATTENUATORS (NON-REDIRECTIVE) TEST LEVEL 3 ARRAY				F.A. RTE.	SECTION	COUNTY	TOTAL SHEETS	SHEET NO.
o:\p\work\pwidth\steffennk\d0365715\07	4645-ah1-details.dgn	DRAWN -	REVISED -		SCALE: N/A	SHEET 1	OF 2	SHEETS	STA.	TO STA.	ILLINOIS	20	18
Default	PLOT SCALE = 48,0000' / 1" =	CHECKED -	REVISED -						VAR.	07 SAFETY 2014-J	VARIOUS		
	PLOT DATE = 1/20/2014	DATE -	REVISED -									CONTRACT NO. 74645	

LOCATION 13: 750th ST UNDER I-57 NEAR EDGEWOOD

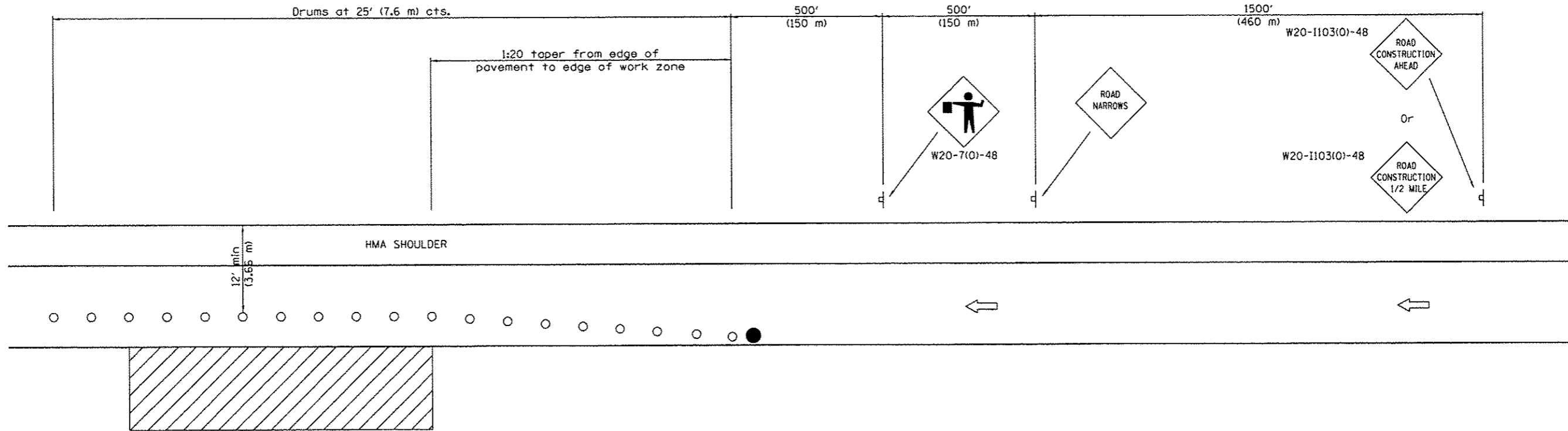


- 44003100 MEDIAN REMOVAL
60618300 CONCRETE MEDIAN SURFACE, 4"
- 44000500 COMBINATION CURB AND GUTTER REMOVAL
60608250 COMBINATION CONCRETE CURB AND GUTTER, TYPE M-2.06

NOTES:
 1.) SEE HIGHWAY STANDARD 643001-02 SAND MODULE IMPACT ATTENUATORS FOR ADDITIONAL INFORMATION
 2.) CURB AND GUTTER TRANSITION COST INCLUDED IN COMBINATION CURB AND GUTTER, TYPE M-2.06

FILE NAME :	USER NAME : steffannk	DESIGNED -	REVISED -	STATE OF ILLINOIS DEPARTMENT OF TRANSPORTATION	DETAIL OF IMPACT ATTENUATORS (NON-REDIRECTIVE) TEST LEVEL 3 ARRAY	F.A. RTE.	SECTION	COUNTY	TOTAL SHEETS	SHEET NO.	
ci\pwwork\pwwork\steffannk\d9365715\07	74645-shs-details.dgn	DRAWN -	REVISED -			VAR.	D7 SAFETY 2014-1	VARIOUS	20	19	
Default	PLOT SCALE : 48.0000 ' / in.	CHECKED -	REVISED -			SCALE: N/A		SHEET 2 OF 2 SHEETS		STA. TO STA.	
	PLOT DATE : 1/28/2014	DATE -	REVISED -			CONTRACT NO. 74645 ILLINOIS FED. AID PROJECT					

PARTIAL LANE CLOSURE



SYMBOLS

- ⌋ Sign
- Drum
- ▨ Work area
- Flagger with traffic control sign

FILE NAME =	USER NAME = staffermk	DESIGNED -	REVISED -	STATE OF ILLINOIS DEPARTMENT OF TRANSPORTATION	DETAIL OF TRAFFIC CONTROL AND PROTECTION, (SPECIAL)	F.A. RTE.	SECTION	COUNTY	TOTAL SHEETS	SHEET NO.
o:\pvc_work\pvc\dot\stoffer\mk\ad0365715\07	74645-aht-detail.dgn	DRAWN -	REVISED -			VAR.	D7 SAFETY 2014-1	VARIOUS	20	20
Default	PLOT SCALE = 40.0000 ' / in.	CHECKED -	REVISED -		SCALE: N/A					
	PLOT DATE = 1/20/2014	DATE -	REVISED -		SHEET OF 2 SHEETS	STA.				
										CONTRACT NO. 74645
										ILLINOIS FED. AID PROJECT