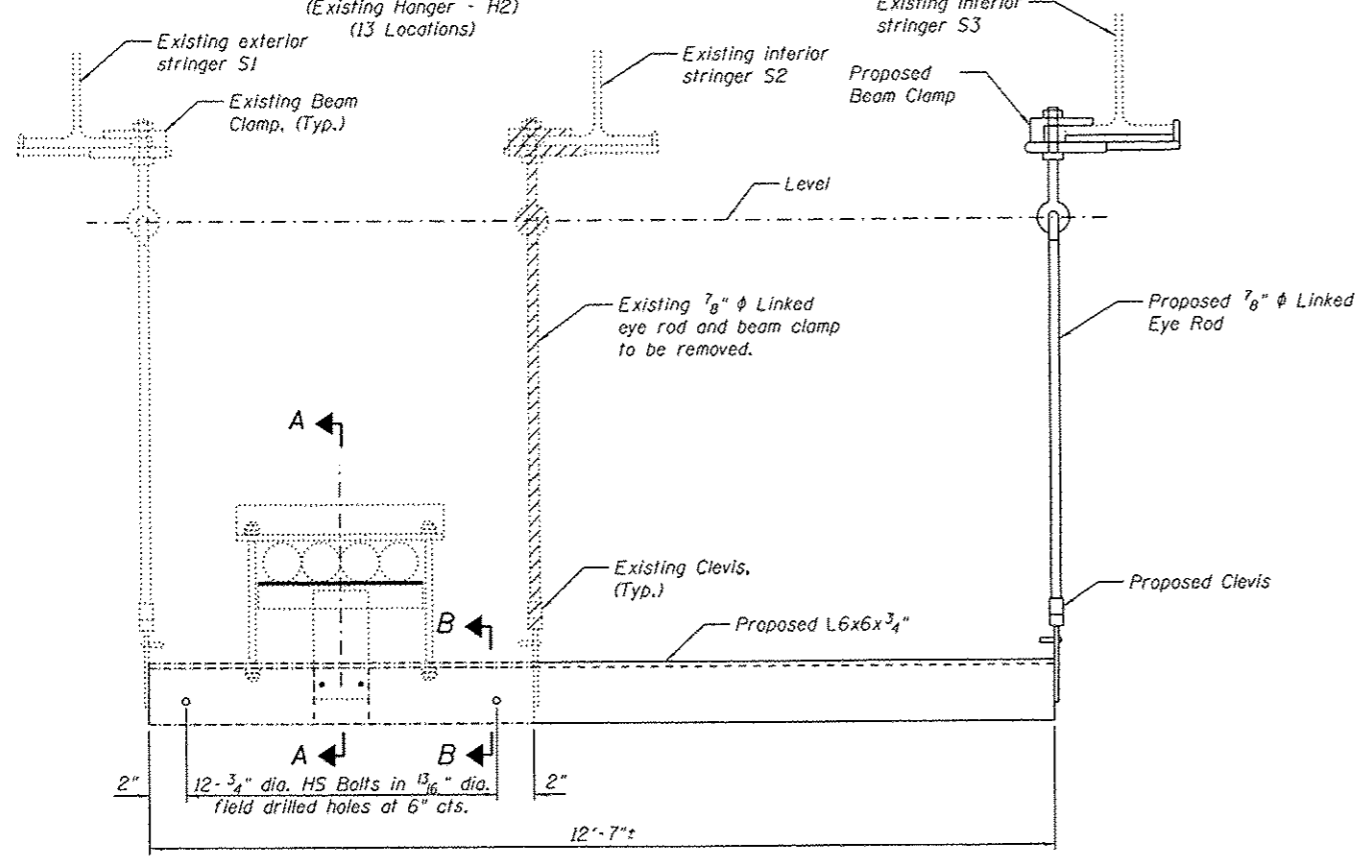
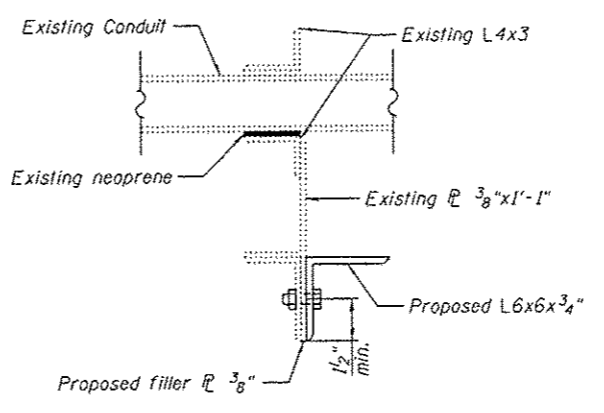


EXISTING CONFIGURATION

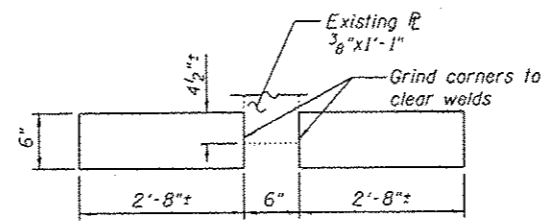
FINAL CONFIGURATION



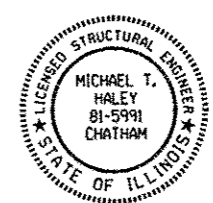
CONDUIT SUPPORT MODIFICATION



SECTION A-A



FILLER PLATES 3/8"



APPROVED
For Structural Adequacy Only

D. Carl Puyger
Engineer of Bridges & Structures

Michael J. Haley 5-1-14
Date
Michael T. Haley
Licensed Structural Engineer
State of Illinois No. 81-5991
Expires 11/30/2014

MODIFICATION SEQUENCE FOR H2

1. Complete rehabilitation of interior stringer S3.
2. Install new L6x6x3/4" bolted to the existing L6x4.
3. Attach new hanger to interior stringer S3.
4. Remove existing hanger attached to interior stringer S2.

Notes:
The Contractor is to verify the existing dimensions prior to fabricating the support assembly. The existing details shown here are derived from the existing plans. It is intended to keep the utility conduit at the current elevation.
See sheets S026 and S027 for details of hangers H6 and H12.
See sheet S027 of S138 for locations of hangers, additional notes and bill of material.
See sheet S088 of S138 for details about painting proposed steel.

(Sheet 1 of 3)



USER NAME *	DESIGNED - JJA	REVISED -
FILE NAME *	CHECKED - TBP	REVISED -
PLOT SCALE *	DRAWN - AJF	REVISED -
PLOT DATE *	CHECKED - VPT	REVISED -

STATE OF ILLINOIS
DEPARTMENT OF TRANSPORTATION

MAIN SPANS CONDUIT HANGER MODIFICATION DETAILS
S.N. 082-6001 MLK BRIDGE OVER MISSISSIPPI RIVER

F.A.P. RTE.	SECTION	COUNTY	TOTAL SHEETS	SHEET NO.
799	16R. DRS-2	ST. CLAIR	156	043
ILLINOIS FED. AID PROJECT				

SHEET NO. S025 OF S138 SHEETS

CONTRACT NO. 76B03