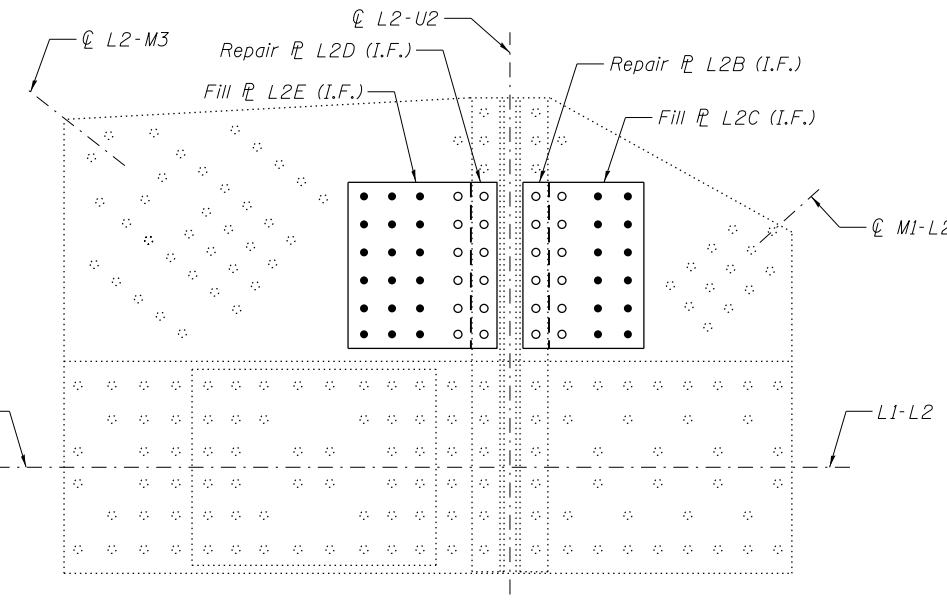
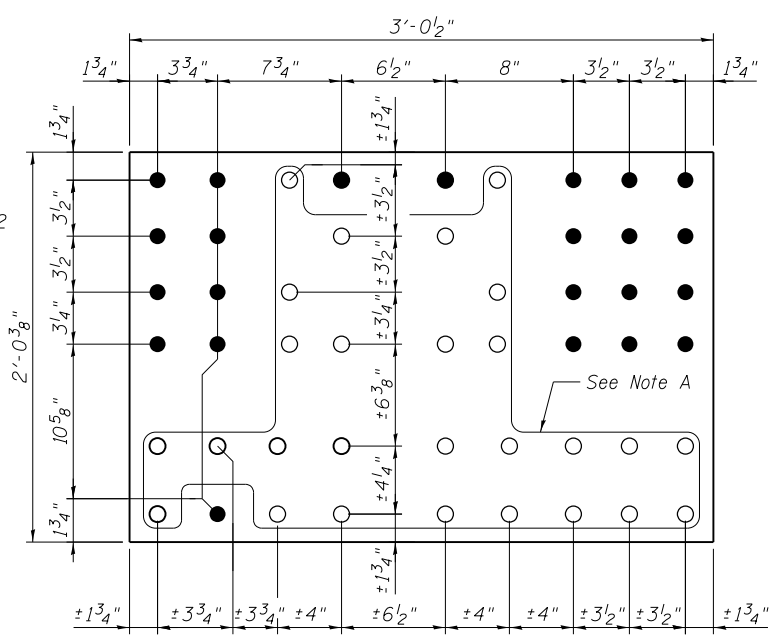


**OUTSIDE PLATE AT PANEL POINT L2N AND L2S**  
 (L2'N AND L2'S SIMILAR)  
 (Span 9 and Span 11)

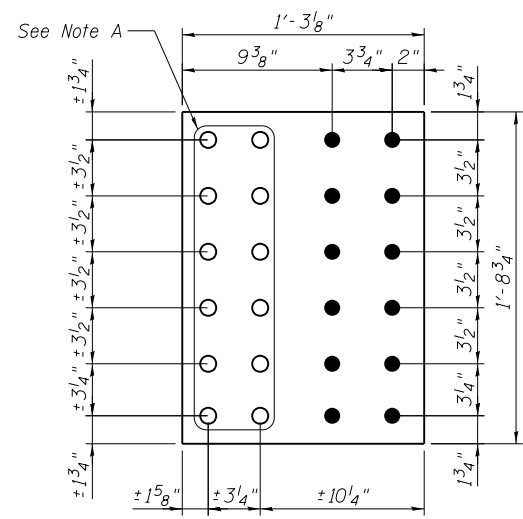


**INSIDE PLATE AT PANEL POINT L2N AND L2S**  
 (L2'N AND L2'S SIMILAR)  
 (Span 9 and Span 11)

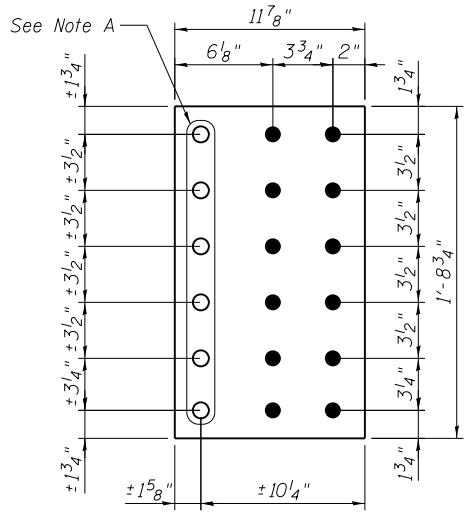


**REPAIR P L2A**  
 P 3/4" X 24 3/8" X 3'-0 1/2"

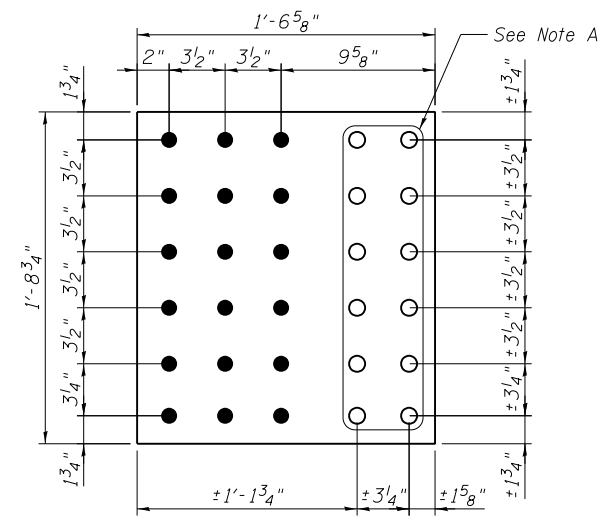
**GUSSET PLATE STRENGTHENING**



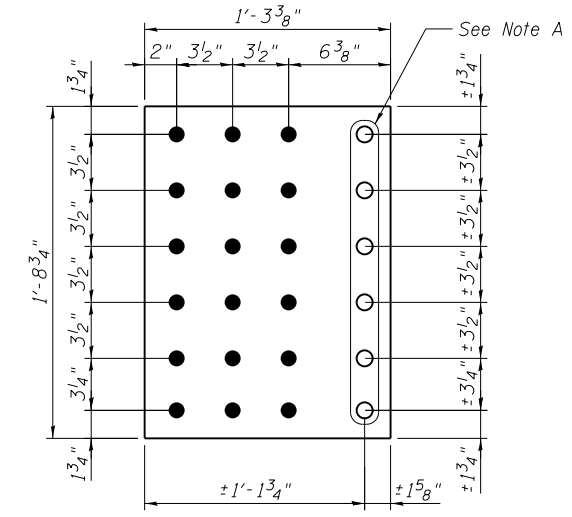
**REPAIR P L2B**  
 P 3/4" X 15 1/8" X 1'-8 3/4"



**FILL P L2C**  
 P 1/2" X 11 7/8" X 1'-8 3/4"



**REPAIR P L2D**  
 P 3/4" X 18 5/8" X 1'-8 3/4"



**FILL P L2E**  
 P 1/2" X 15 3/8" X 1'-8 3/4"

**Procedure**  
 Install strengthening plates and fills, one at a time, on the inside gusset plate, followed by the strengthening plate on the outside gusset. Strengthening plates on the inside and outside gussets shall not be installed at the same time.  
 If additional fasteners need to be removed other than those shown on this sheet, the Contractor shall submit a procedure for review and approval. If needed, the Contractor shall provide temporary support for floorbeams and joints.

Note A:  
 Field drill holes using existing holes as template.  
 Remainder of holes may be shop or field drilled.

**BILL OF MATERIAL**

Item	Unit	Total
Structural Steel Repair	Pound	2,190

Note:  
 All bolted connections shown on this sheet shall be made with 1" dia. H.S. bolts unless otherwise noted.  
 For front and inside faces of gusset plates, see truss cross section on sheet S8.



USER NAME =	DESIGNED - MEL	REVISED
	CHECKED - CDB	REVISED
PLOT SCALE =	DRAWN - AEC	REVISED
PLOT DATE = 05/02/2014	CHECKED - MEL	REVISED

**STATE OF ILLINOIS**  
**DEPARTMENT OF TRANSPORTATION**

**MAIN SPAN GUSSET PLATE STRENGTHENING - 1**  
**S.N. 082-6001 MLK BRIDGE OVER MISSISSIPPI RIVER**

SHEET NO. S46 OF S138 SHEETS

F.A.P. RTE.	SECTION	COUNTY	TOTAL SHEETS	SHEET NO.
799	IBR, DRS-2	ST. CLAIR	156	64
CONTRACT NO. 76B03			ILLINOIS FED. AID PROJECT	