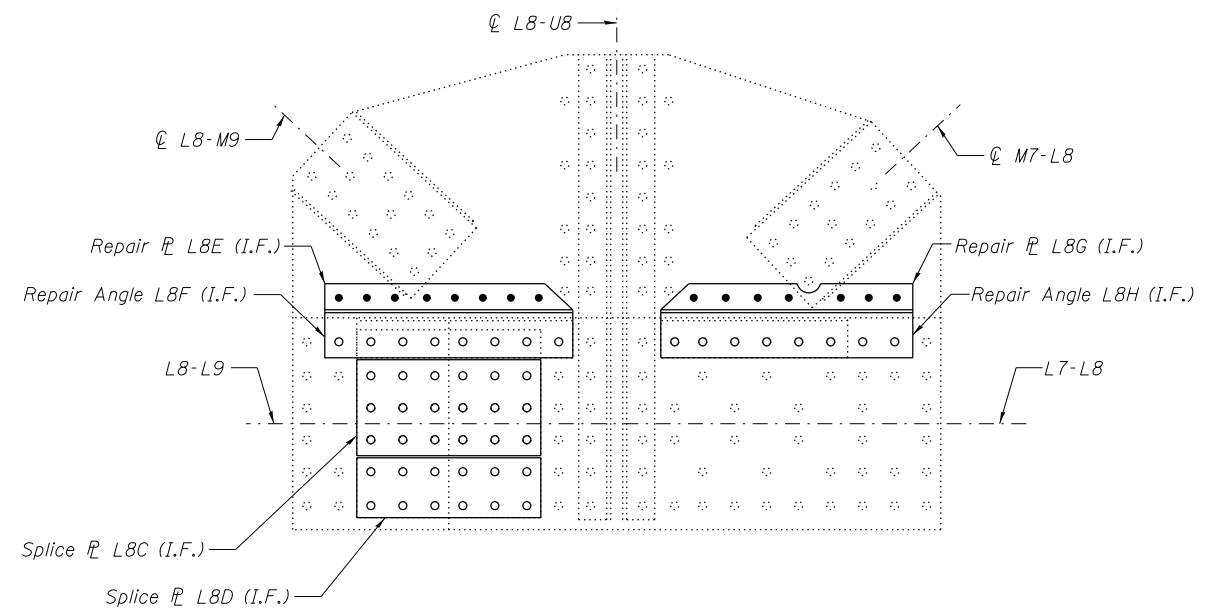
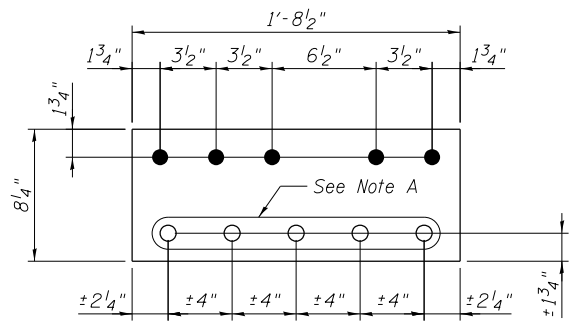


OUTSIDE PLATE AT PANEL POINT L8N AND L8S
(L8'N AND L8'S SIMILAR)
 (Span 9 and Span 11)

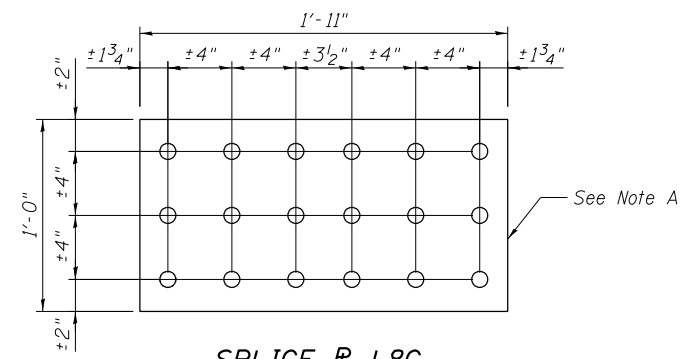


INSIDE PLATE AT PANEL POINT L8N AND L8S
(L8'N AND L8'S SIMILAR)
 (Span 9 and Span 11)

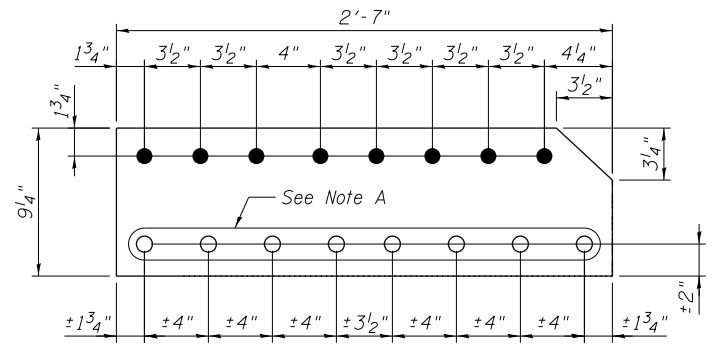
GUSSET PLATE STRENGTHENING



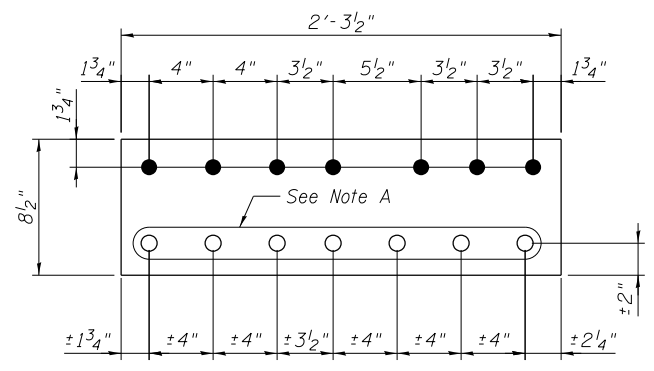
REPAIR PL L8A
 PL 5/8" X 8 1/4" X 1'-8 1/2"



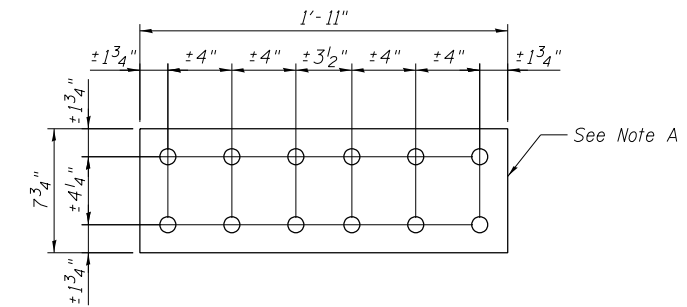
SPLICE PL L8C
 PL 5/8" X 1'-0" X 1'-11"



REPAIR PL L8E
 PL 5/8" X 9 1/4" X 2'-7"



REPAIR PL L8B
 PL 5/8" X 8 1/2" X 2'-3 1/2"



SPLICE PL L8D
 PL 5/8" X 7 3/4" X 1'-11"

Procedure
 Remove the bottom lateral connection plate and angle; then install repair plates and angles, as shown, one side at a time on the inside gusset plate. Install splice plate L8D on the inside gusset plate, followed by the installation of the splice plate L8C.

After completing the inside gusset plate strengthening, install the repair plates and splice plates, one at a time, on the outside gusset plate.

If additional fasteners need to be removed other than those shown on this sheet, the Contractor shall submit a procedure for review and approval. If needed, the Contractor shall provide temporary support for joints.

BILL OF MATERIAL

Item	Unit	Total
Structural Steel Repair	Pound	2840

Notes:
 All bolted connections shown on this sheet shall be made with 1" dia. H.S. bolts unless otherwise noted.
 For details of pieces L8F, L8G and L8H, see sheet S50A.
 For front and inside faces of gusset plate, see sheet S8.

Note A:
 Field drill holes using existing holes as template. Remainder of holes may be shop or field drilled.



USER NAME =	DESIGNED - MEL / YSS	REVISED
PLOT SCALE =	CHECKED - CDB	REVISED
PLOT DATE = 05/08/2014	DRAWN - AEC	REVISED
	CHECKED - MEL	REVISED

STATE OF ILLINOIS
DEPARTMENT OF TRANSPORTATION

MAIN SPAN GUSSET PLATE STRENGTHENING - 5
S.N. 082-6001 MLK BRIDGE OVER MISSISSIPPI RIVER

SHEET NO. S50 OF S138 SHEETS

F.A.P. RTE. 799	SECTION 1BR, DRS-2	COUNTY ST. CLAIR	TOTAL SHEETS 156	SHEET NO. 68
ILLINOIS FED. AID PROJECT				CONTRACT NO. 76B03