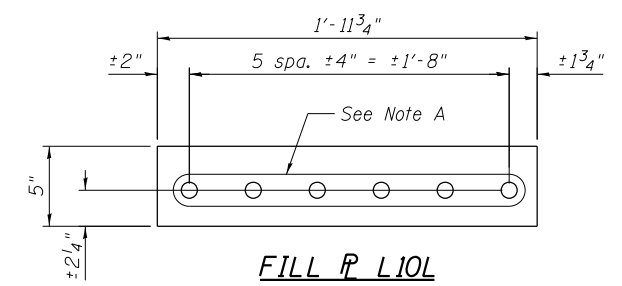
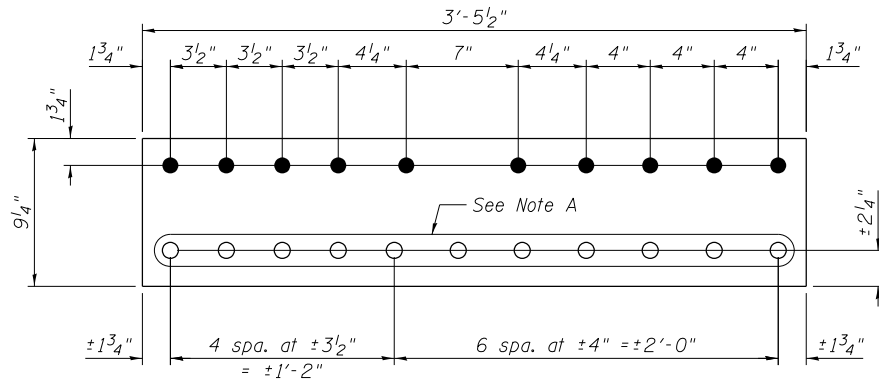


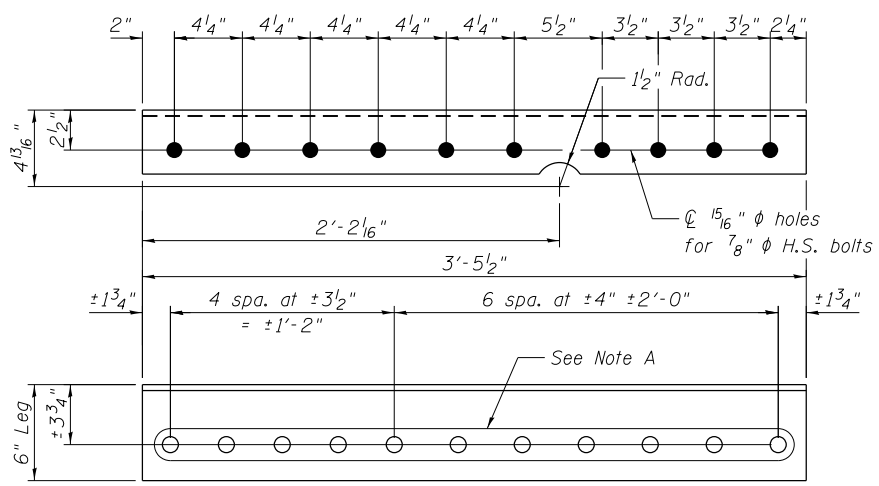
FILL P L10K
 P 9/16" x 4" x 3'-5 1/2"



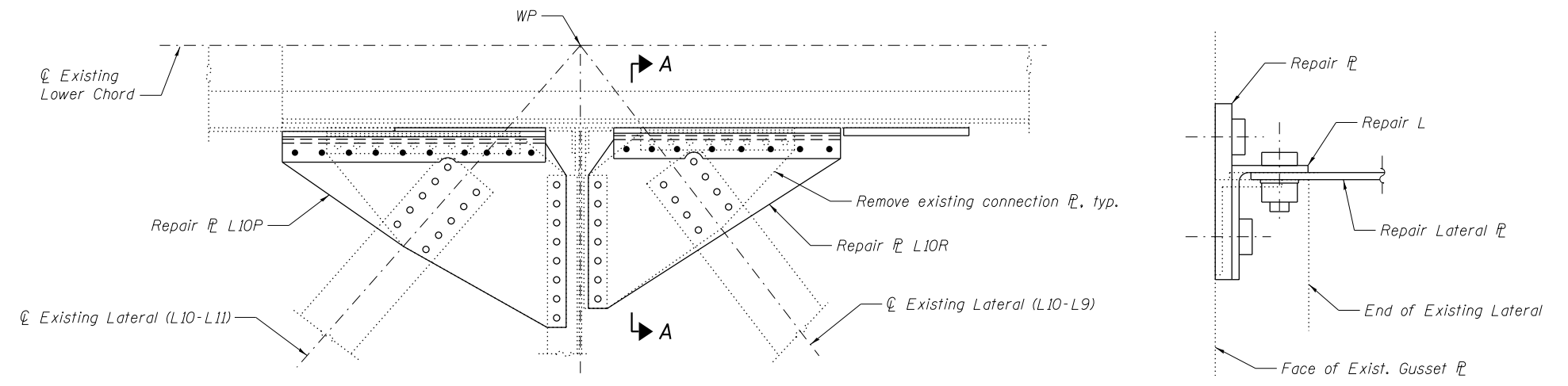
FILL P L10L
 P 9/16" x 5" x 1'-11 3/4"



REPAIR P L10M
 P 7/8" x 9 1/4" x 3'-5 1/2"

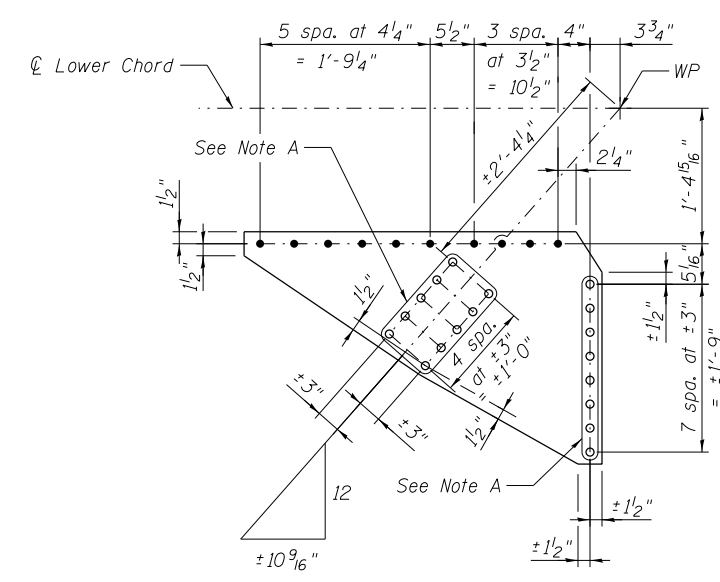


REPAIR ANGLE L10T
 L6 x 4 x 3/8 x 3'-5 1/2"



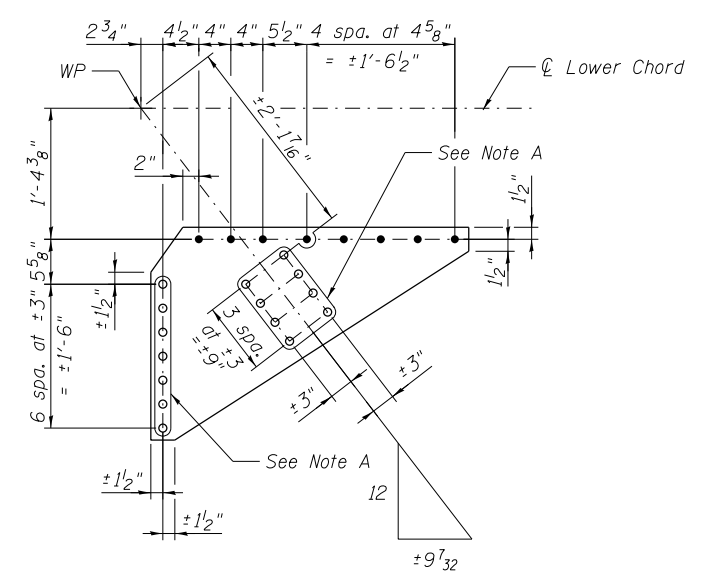
LOWER LATERAL AT PANEL POINT L10N AND L10S
 (L10'N AND L10'S SIMILAR)
 (Span 9 and Span 11)

SECTION A-A



REPAIR P L10P
 P 3/8" x 29 5/8" x 3'-8 3/4"

Note: Repair P L10P requires 1 5/16" φ holes for 7/8" φ H.S. bolts.



REPAIR P L10R
 P 3/8" x 26 5/8" x 3'-3 3/4"

Note: Repair P L10R requires 1 5/16" φ holes for 7/8" φ H.S. bolts.

Note A:
 Field drill holes using existing holes as template.
 Remainder of holes may be shop or field drilled.

Notes:
 All bolted connections shown on this sheet shall be made with 1" dia. H.S. bolts unless otherwise noted.
 For location of pieces, L10K, L10L, L10M and L10T, see sheet S51.



USER NAME =	DESIGNED - MEL / YSS	REVISED
PLOT SCALE =	CHECKED - CDB	REVISED
PLOT DATE = 05/08/2014	DRAWN - AEC	REVISED
	CHECKED - MEL	REVISED

STATE OF ILLINOIS
 DEPARTMENT OF TRANSPORTATION

MAIN SPAN GUSSET PLATE STRENGTHENING - 7
 S.N. 082-6001 MLK BRIDGE OVER MISSISSIPPI RIVER

SHEET NO. S52 OF S138 SHEETS

F.A.P. RTE. 799	SECTION IBR, DRS-2	COUNTY ST. CLAIR	TOTAL SHEETS 156	SHEET NO. 70
CONTRACT NO. 76B03				
ILLINOIS FED. AID PROJECT				