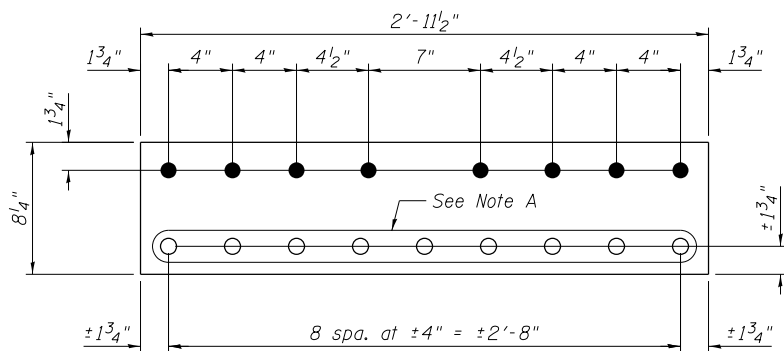
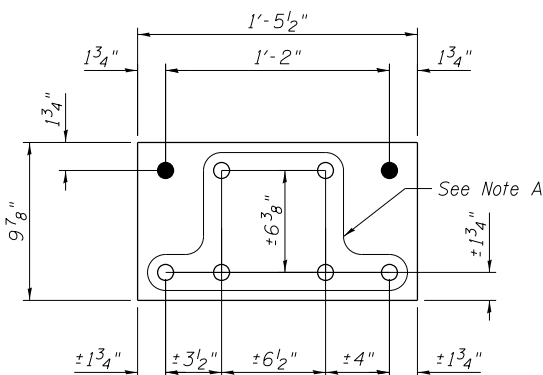


**OUTSIDE PLATE AT PANEL POINT L18N AND L18S**  
**(L18'N AND L18'S SIMILAR)**  
 (Span 10)

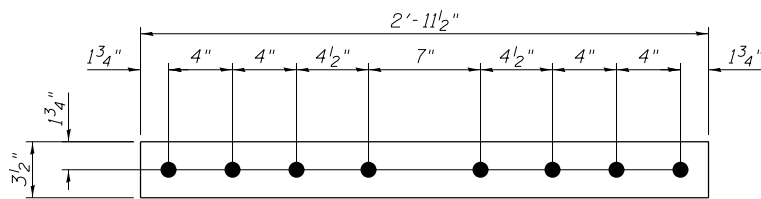
**GUSSET PLATE STRENGTHENING**



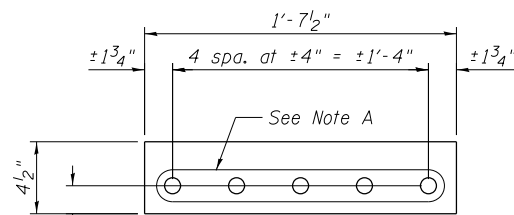
**REPAIR P L18A**  
 P 7/8" x 8 1/4" x 2'-11 1/2"



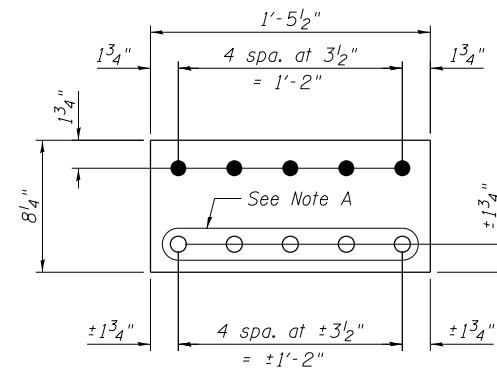
**REPAIR P L18C**  
 P 7/8" x 9 7/8" x 1'-5 1/2"



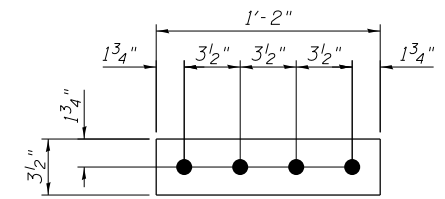
**FILL P L18B**  
 P 3/8" x 3 1/2" x 2'-11 1/2"



**FILL P L18D**  
 P 3/8" x 4 1/2" x 1'-7 1/2"

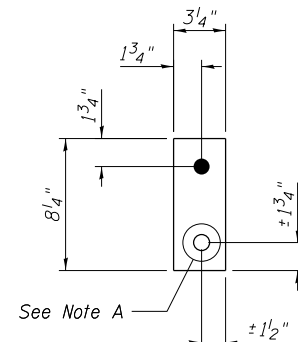


**REPAIR P L18G**  
 P 1/2" x 8 1/4" x 1'-5 1/2"

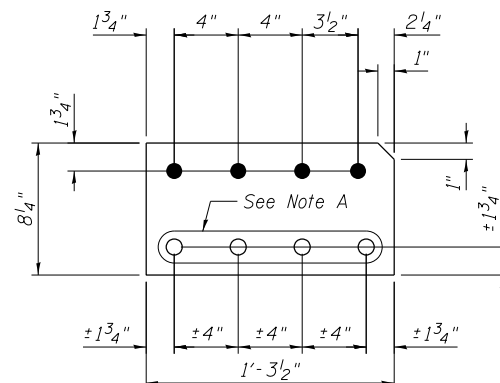


**FILL P L18H**  
 P 1/2" x 3 1/2" x 1'-2"

Note A:  
 Field drill holes using existing holes as template.  
 Remainder of holes may be shop or field drilled.



**FILL P L18E**  
 P 1/2" x 3/4" x 0'-8 1/4"



**REPAIR P L18F**  
 P 7/8" x 8 1/4" x 1'-3 1/2"

**Procedure**  
 Remove the bottom lateral connection plate and angle; then install repair plates, angles and fills, as shown, one side at a time on the inside gusset plate. Install repair plate L18G on the inside gusset plate, followed by the installation of the repair plates, one at a time, on the outside gusset plate.  
  
 If additional fasteners need to be removed other than those shown on this sheet, the Contractor shall submit a procedure for review and approval. If needed, the Contractor shall provide temporary support for joints.

**BILL OF MATERIAL**

Item	Unit	Total
Structural Steel Repair	Pound	3510

Notes:  
 All bolted connections shown on this sheet shall be made with 1" dia. H.S. bolts unless otherwise noted.  
 For L18 inside gusset P, see sheet S54.  
 For front face of gusset plate, see sheet S8.



USER NAME =	DESIGNED - MEL / YSS	REVISED
PLOT SCALE =	CHECKED - CDB	REVISED
PLOT DATE = 05/08/2014	DRAWN - AEC	REVISED
	CHECKED - MEL	REVISED

STATE OF ILLINOIS  
 DEPARTMENT OF TRANSPORTATION

MAIN SPAN GUSSET PLATE STRENGTHENING - 8  
 S.N. 082-6001 MLK BRIDGE OVER MISSISSIPPI RIVER

SHEET NO. S53 OF S138 SHEETS

F.A.P. RTE.	SECTION	COUNTY	TOTAL SHEETS	SHEET NO.
799	1BR, DRS-2	ST. CLAIR	156	71
ILLINOIS FED. AID PROJECT			CONTRACT NO. 76B03	