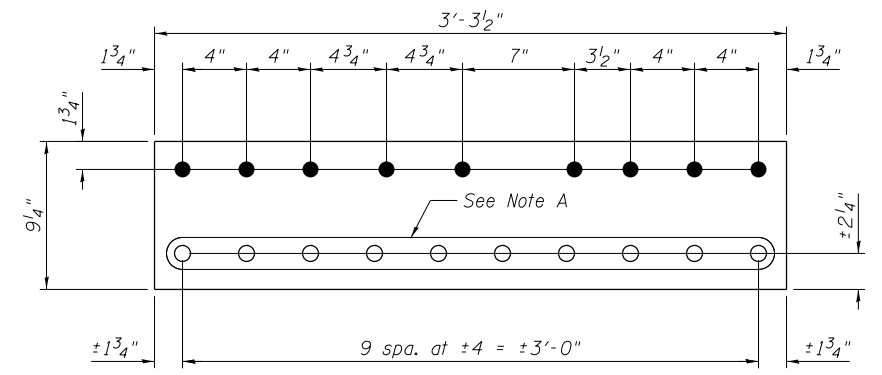
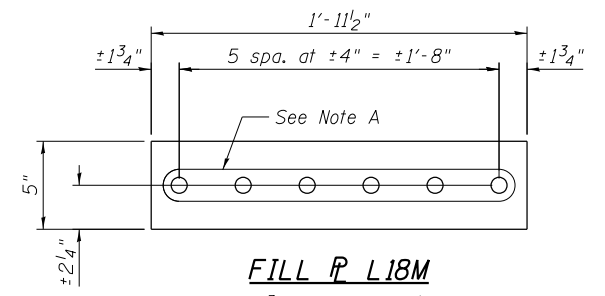


INSIDE PLATE AT PANEL POINT L18N AND L18S
 (L18'N AND L18'S SIMILAR)
 (Span 10)

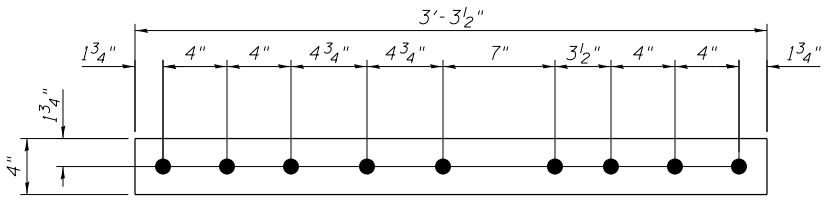
GUSSET PLATE STRENGTHENING



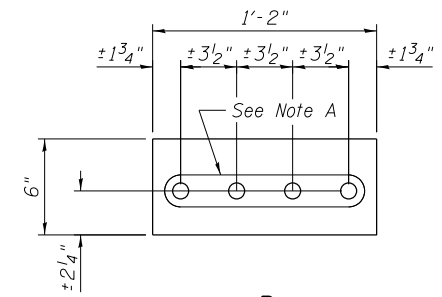
REPAIR P L18P
 P 7/8" x 9 1/4" x 3'-3 1/2"



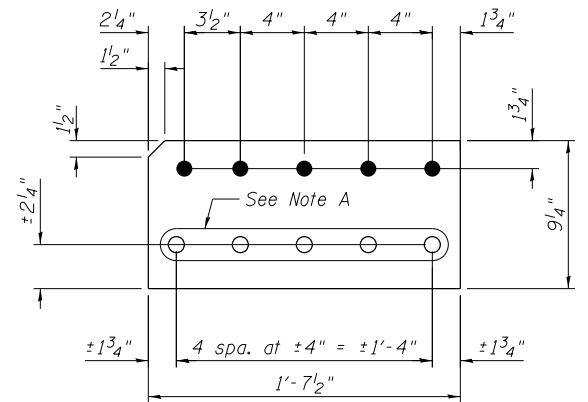
FILL P L18M
 P 3/8" x 5" x 1'-11 1/2"



FILL P L18J
 P 3/8" x 4" x 3'-3 1/2"



FILL P L18K
 P 7/8" x 6" x 1'-2"



REPAIR P L18L
 P 7/8" x 9 1/4" x 1'-7 1/2"

Note A:
 Field drill holes using existing holes as template.
 Remainder of holes may be shop or field drilled.

Notes:
 For the Installation Procedure and Bill of Material, see sheet S53.
 For details of pieces, L18E, L18G and L18H, see sheet S53.
 For details of pieces, L18T and L18U, see sheet S54A.
 For location and details of lateral connection repair plates, see sheet S54A.
 All bolted connections shown on this sheet shall be made with 1" dia. H.S. bolts unless otherwise noted.
 For inside face of gusset plate, see sheet S8.



USER NAME =	DESIGNED - MEL	REVISED
	CHECKED - CDB	REVISED
PLOT SCALE =	DRAWN - AEC	REVISED
PLOT DATE = 05/08/2014	CHECKED - MEL	REVISED

STATE OF ILLINOIS
 DEPARTMENT OF TRANSPORTATION

MAIN SPAN GUSSET PLATE STRENGTHENING - 9
 S.N. 082-6001 MLK BRIDGE OVER MISSISSIPPI RIVER

SHEET NO. S54 OF S138 SHEETS

F.A.P. RTE.	SECTION	COUNTY	TOTAL SHEETS	SHEET NO.
799	1BR, DRS-2	ST. CLAIR	156	72
CONTRACT NO. 76B03				
ILLINOIS FED. AID PROJECT				