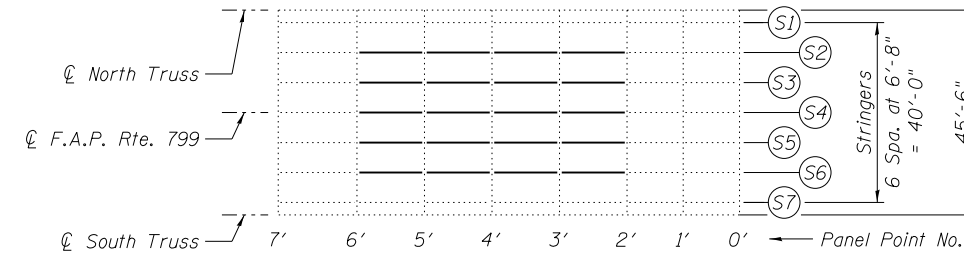
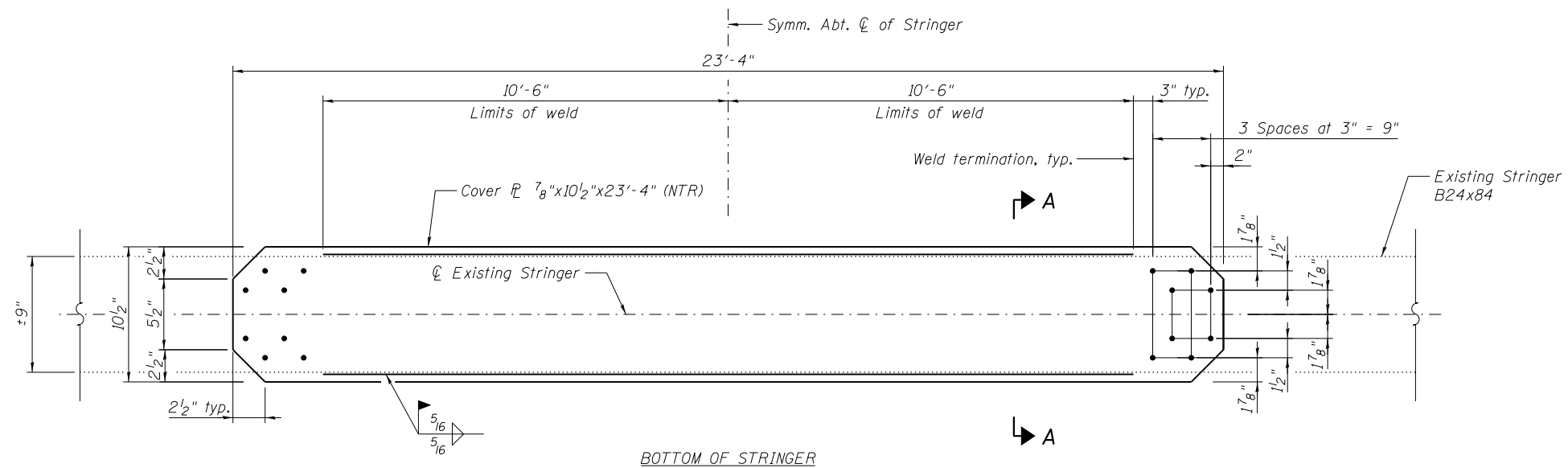


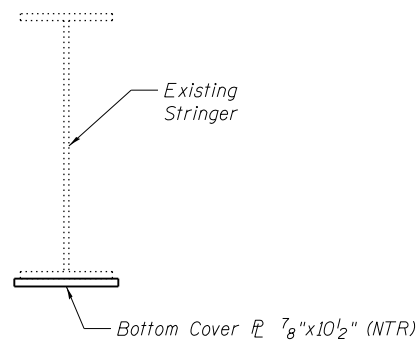
PARTIAL PLAN - SPAN 9



PARTIAL PLAN - SPAN 11



**SPAN 9 AND SPAN 11 STRINGER STRENGTHENING
PANELS PP2-PP6 AND PP2'-PP6'
(40 Locations)**



SECTION A-A

BILL OF MATERIAL

Item	Unit	Total
Structural Steel Repair	Pound	30,210

Note:
Load carrying components designed "NTR" shall conform to the Impact Testing Requirement, Zone 2.



USER NAME =	DESIGNED - MEL	REVISED
	CHECKED - CDB	REVISED
PLOT SCALE =	DRAWN - AEC	REVISED
PLOT DATE = 05/02/2014	CHECKED - MEL	REVISED

**STATE OF ILLINOIS
DEPARTMENT OF TRANSPORTATION**

**MAIN SPAN STRINGER STRENGTHENING PP2-PP6 AND PP2'-PP6'
S.N. 082-6001 MLK BRIDGE OVER MISSISSIPPI RIVER**

SHEET NO. S61 OF S138 SHEETS

F.A.P. RTE. 799	SECTION 1BR, DRS-2	COUNTY ST. CLAIR	TOTAL SHEETS 156	SHEET NO. 79
CONTRACT NO. 76B03				ILLINOIS FED. AID PROJECT