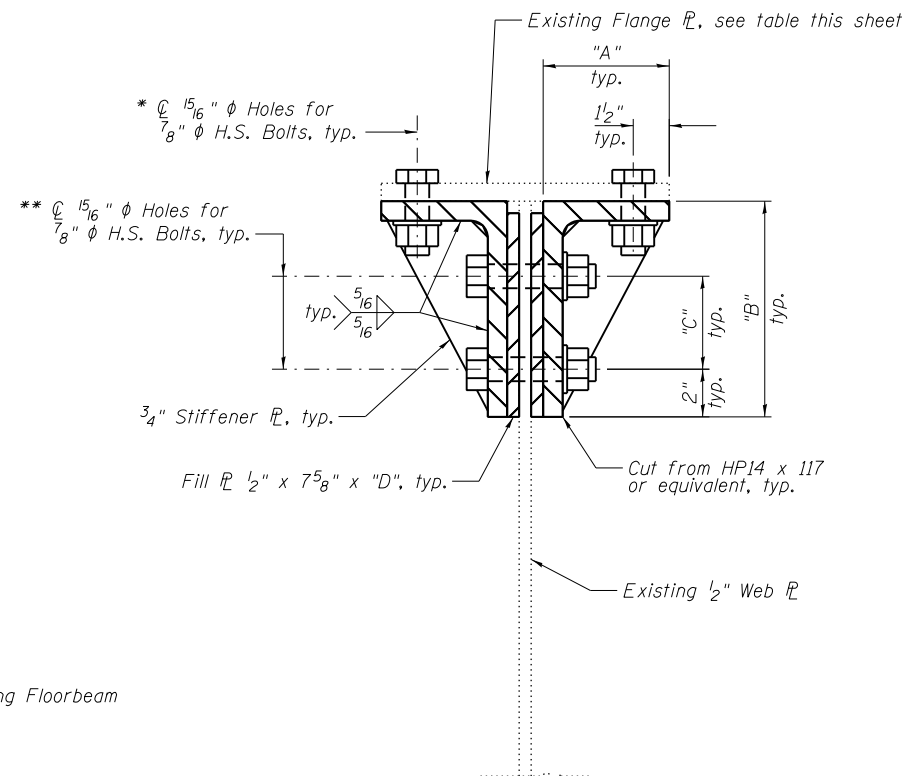
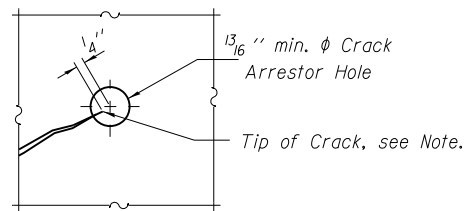


ELEVATION VIEW - END OF FLOORBEAM
(Required each end of floorbeam)



SECTION A-A



CRACK ARRESTOR HOLE DETAIL

Note: Locate crack tip using liquid dye penetrant or magnetic particle testing. Drill 13/16" min. φ Crack Arrestor hole at the crack tip. After crack arrestor hole has been drilled, dye penetrant or magnetic particle testing shall be used to verify that the drilled hole has captured the crack tip. Cost shall be included with Structural Steel Repair.

FLOORBEAM RETROFIT - CONCRETE DECK

LOCATION	DIMENSION				EXISTING TOP FLG.
	"A"	"B"	"C"	"D"	
FB14 & FB14'	5 1/4"	9"	3 7/8"	8 1/2"	12" x 3/4"
FB8'	7 1/4"	8"	3 3/4"	7 1/2"	16" x 1 1/2"

Notes:
All webs shall be checked for cracks and arrestor holes drilled before plates added.
For concrete deck removal details, see sheets S28 and S29.

BILL OF MATERIAL

Item	Unit	Total
Structural Steel Repair	Pound	1540