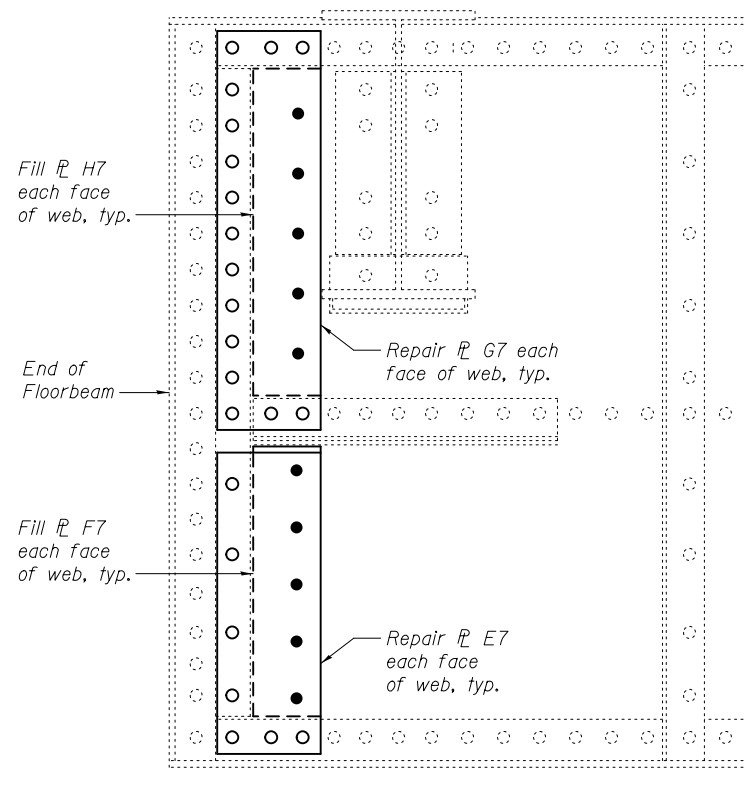


NORTH END AT PANEL POINT L16

West face shown
Span 10

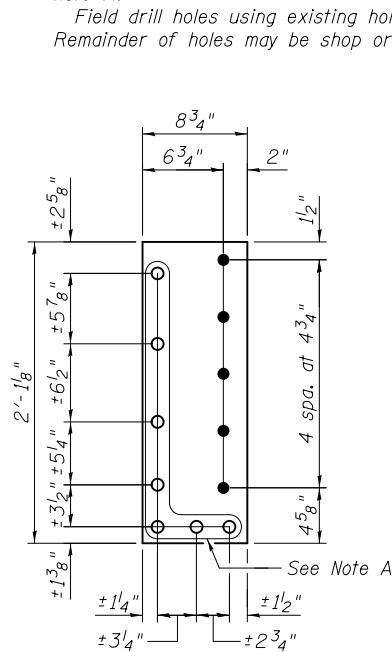


NORTH END AT PANEL POINT L19

West face shown
Span 10

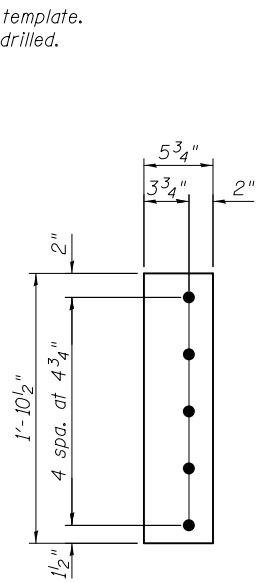
FLOORBEAM WEB REPAIRS

Note A:
Field drill holes using existing holes as template.
Remainder of holes may be shop or field drilled.



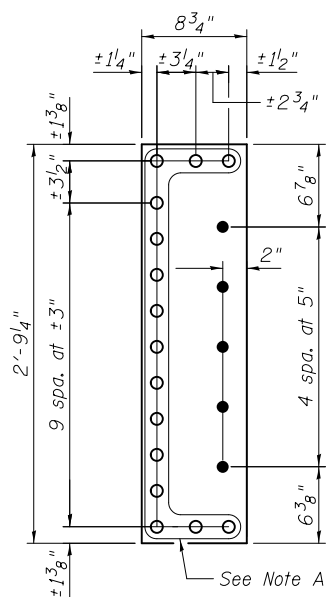
REPAIR P A7

P 3/8" x 8 3/4" x 2'-1 1/8"



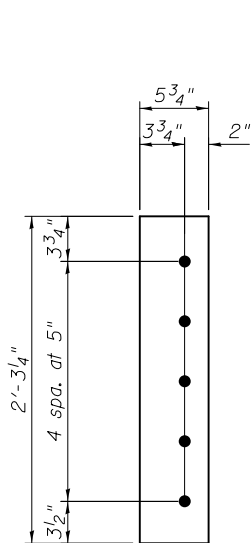
FILL P B7

P 9/16" x 5 3/4" x 1'-10 1/2"



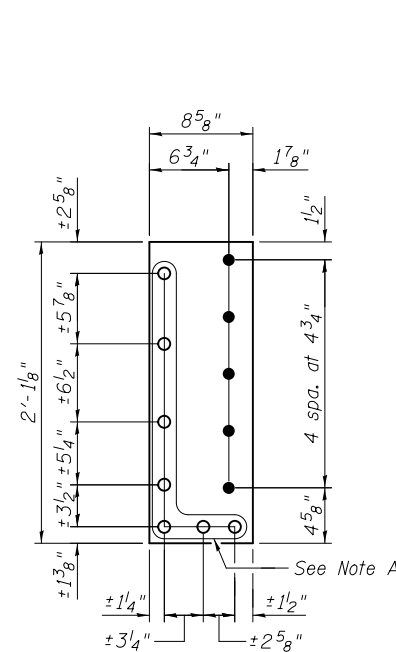
REPAIR P C7

P 3/8" x 8 3/4" x 2'-9 1/4"



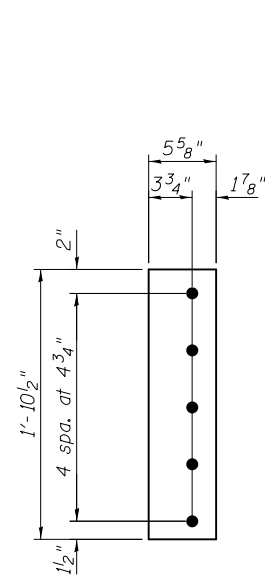
FILL P D7

P 9/16" x 5 3/4" x 2'-3 1/4"



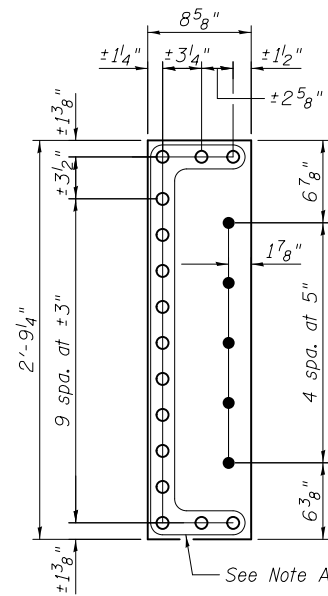
REPAIR P E7

P 3/8" x 8 5/8" x 2'-1 1/8"



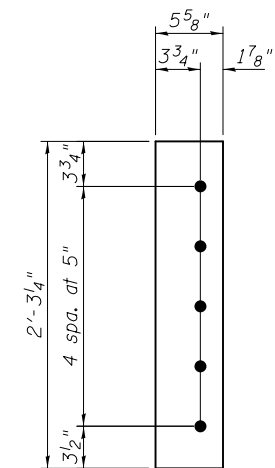
FILL P F7

P 9/16" x 5 5/8" x 1'-10 1/2"



REPAIR P G7

P 3/8" x 8 5/8" x 2'-9 1/4"



FILL P H7

P 9/16" x 5 5/8" x 2'-3 1/4"

BILL OF MATERIAL

Item	Unit	Total
Structural Steel Repair	Pound	460



USER NAME =	DESIGNED - PRC	REVISED
	CHECKED - CDB	REVISED
PLOT SCALE =	DRAWN - PRC	REVISED
PLOT DATE = 03/20/2014	CHECKED - CDB	REVISED

STATE OF ILLINOIS
DEPARTMENT OF TRANSPORTATION

MAIN SPANS FLOORBEAM WEB REPAIRS - 7
S.N. 082-6001 MLK BRIDGE OVER MISSISSIPPI RIVER

SHEET NO. S71 OF S138 SHEETS

F.A.P. RTE.	SECTION	COUNTY	TOTAL SHEETS	SHEET NO.
799	IBR, DRS-2	ST. CLAIR	156	89
CONTRACT NO. 76B03				
ILLINOIS FED. AID PROJECT				