

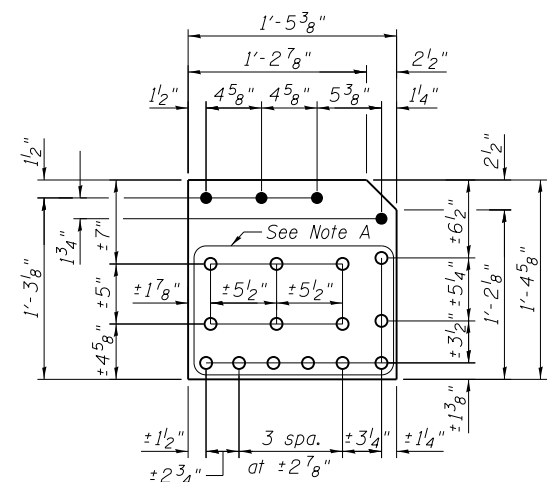
NORTH END AT PANEL POINT L21' AND L23'
EAST FACE
 (Span 10)

NORTH END AT PANEL POINT L21' AND L23'
WEST FACE
 (Span 10)

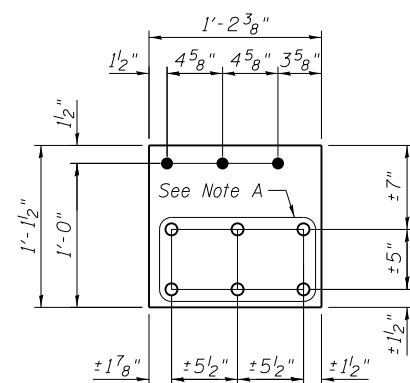
FLOORBEAM WEB REPAIRS

Note: L21' shown, L23' similar

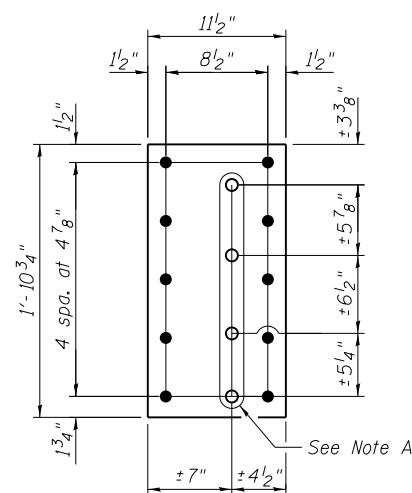
Note A:
 Field drill holes using existing holes as template.
 Remainder of holes may be shop or field drilled.



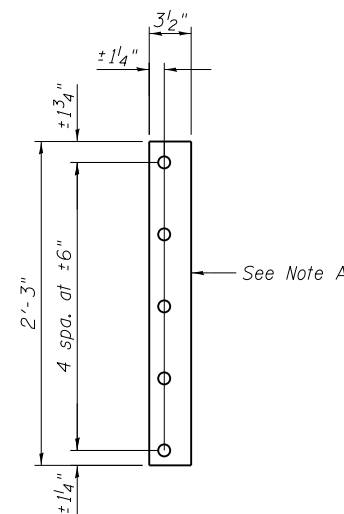
REPAIR PL A8
 PL 3/8" x 16 5/8" x 1'-5 3/8"



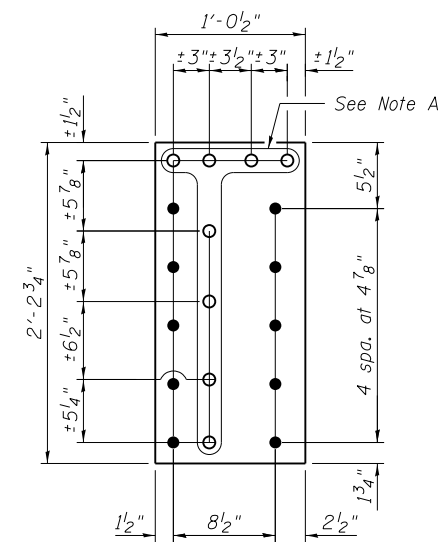
FILL PL B8
 PL 9/16" x 13 3/4" x 1'-2 3/8"



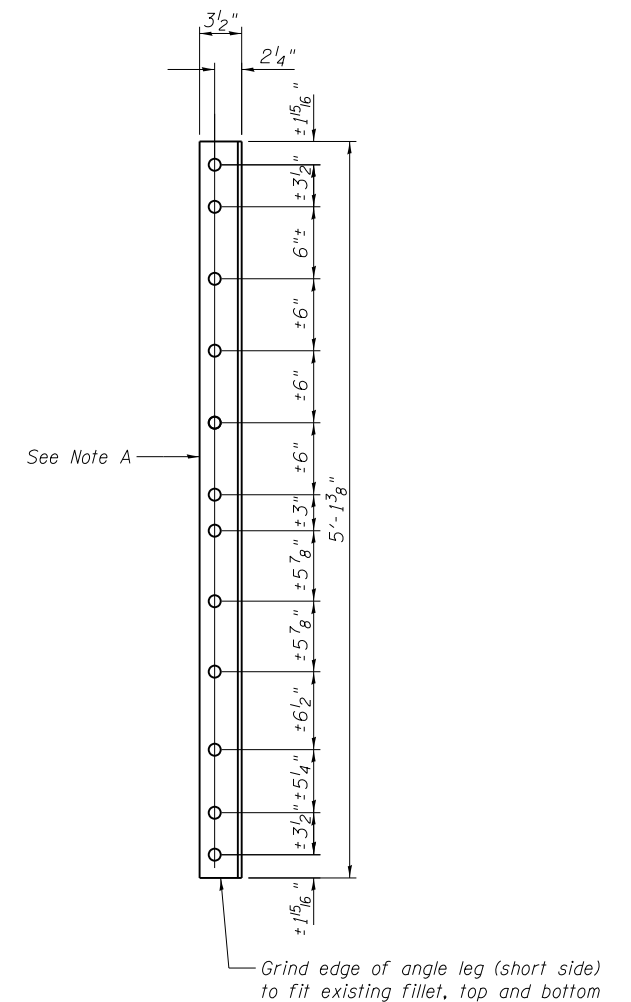
REPAIR PL C8
 PL 3/8" x 11 1/2" x 1'-10 3/4"



FILL PL D8
 PL 9/16" x 3 1/2" x 2'-3"



REPAIR PL E8
 PL 9/16" x 12 1/2" x 2'-2 3/4"



REPAIR ANGLE F8
 L5x3 1/2x5 5/16 x 5'-1 3/8"

BILL OF MATERIAL

Item	Unit	Total
Structural Steel Repair	Pound	480



USER NAME =	DESIGNED - PRC	REVISED
PLOT SCALE =	CHECKED - CDB	REVISED
PLOT DATE = 05/02/2014	DRAWN - PRC	REVISED
	CHECKED - CDB	REVISED

STATE OF ILLINOIS
 DEPARTMENT OF TRANSPORTATION

MAIN SPANS FLOORBEAM WEB REPAIRS - 8
 S.N. 082-6001 MLK BRIDGE OVER MISSISSIPPI RIVER

SHEET NO. S72 OF S138 SHEETS

F.A.P. RTE.	SECTION	COUNTY	TOTAL SHEETS	SHEET NO.
799	1BR, DRS-2	ST. CLAIR	156	90
CONTRACT NO. 76B03				
ILLINOIS FED. AID PROJECT				