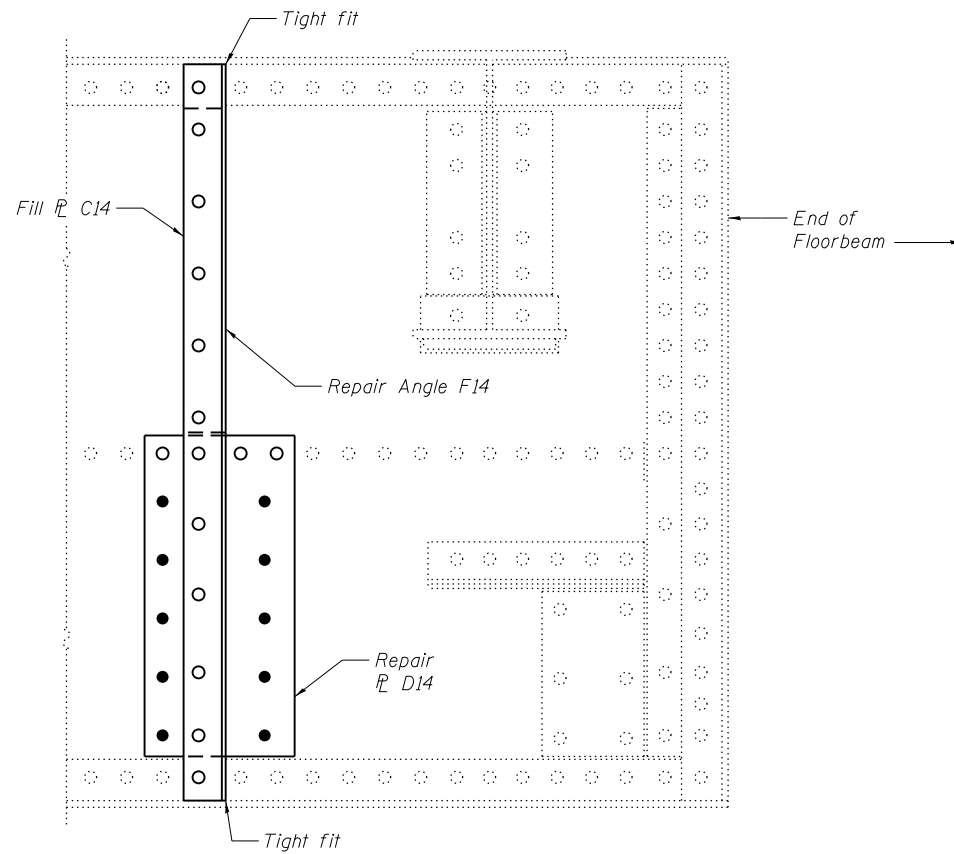
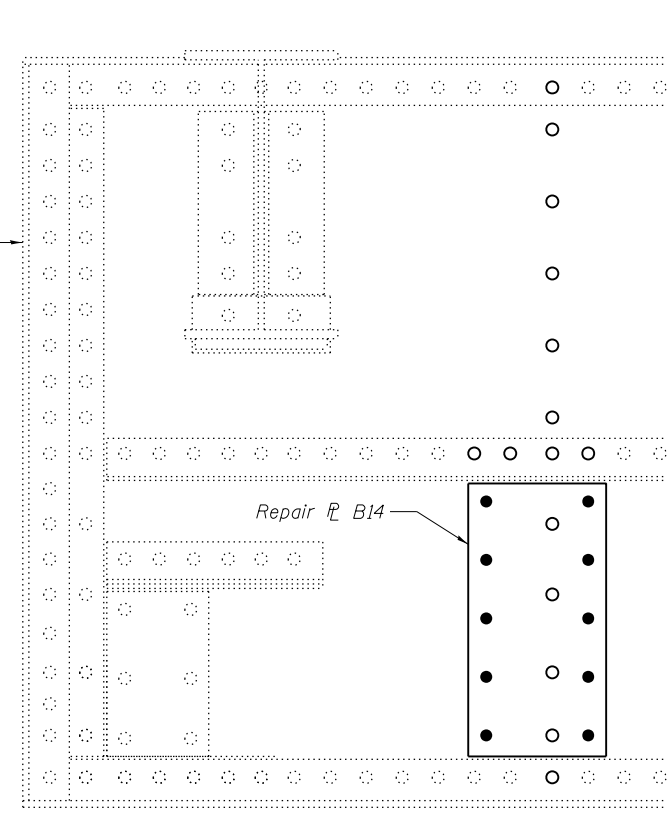


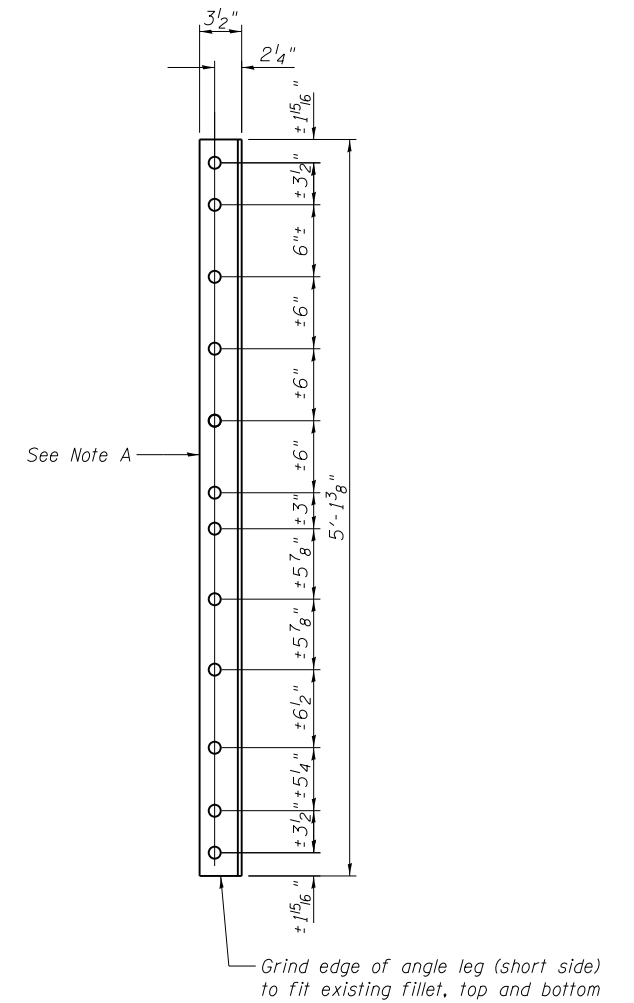
NORTH END AT PANEL POINT L21
East face shown
(Span 10)



SOUTH END AT PANEL POINT L21
WEST FACE
(Span 10)

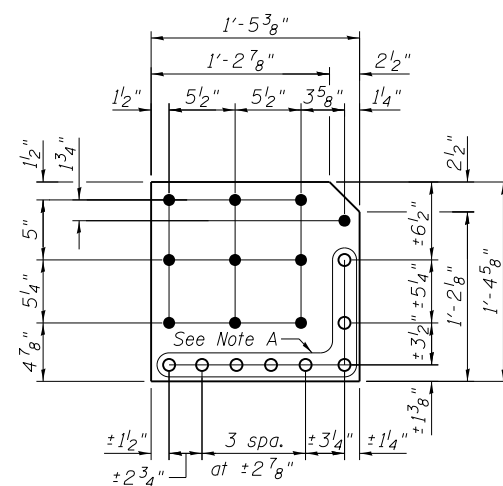


SOUTH END AT PANEL POINT L21
EAST FACE
(Span 10)

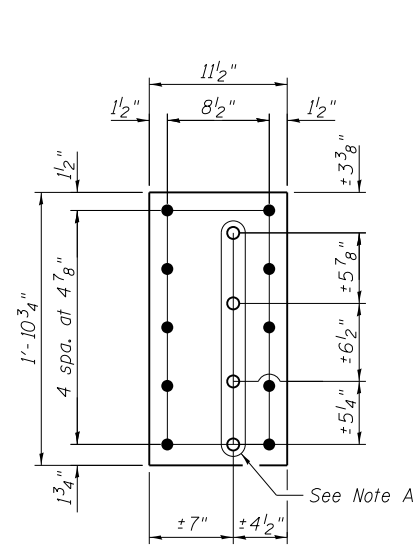


REPAIR ANGLE F14
L5x3 1/2 x 5/16 x 5'-1 3/8"

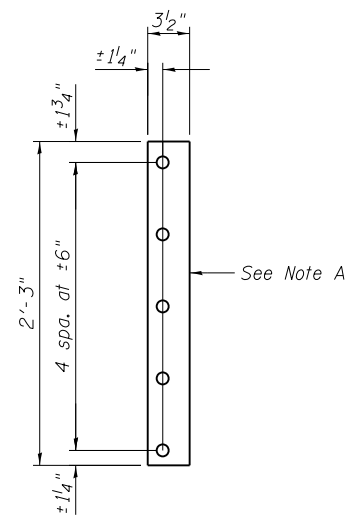
Note A:
Field drill holes using existing holes as template.
Remainder of holes may be shop or field drilled.



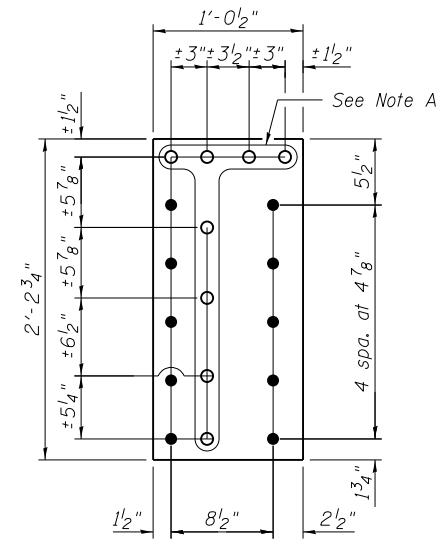
REPAIR L A14
L 3/8" x 16 5/8" x 1'-5 3/8"



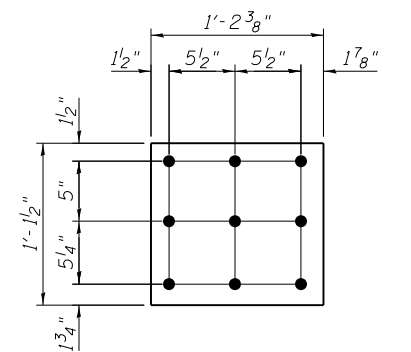
REPAIR L B14
L 3/8" x 11 1/2" x 1'-10 3/4"



FILL L C14
L 9/16" x 3 1/2" x 2'-3"



REPAIR L D14
L 9/16" x 12 1/2" x 2'-2 3/4"



FILL L E14
L 9/16" x 13 1/2" x 1'-2 3/8"

BILL OF MATERIAL

Item	Unit	Total
Structural Steel Repair	Pound	310



USER NAME =
DESIGNED - PRC
CHECKED - CDB
PLOT SCALE =
DRAWN - PRC
PLOT DATE = 05/02/2014
CHECKED - CDB

DESIGNED - PRC
CHECKED - CDB
DRAWN - PRC
CHECKED - CDB

REVISED
REVISED
REVISED
REVISED

STATE OF ILLINOIS
DEPARTMENT OF TRANSPORTATION

MAIN SPANS FLOORBEAM WEB REPAIRS - 14
S.N. 082-6001 MLK BRIDGE OVER MISSISSIPPI RIVER

SHEET NO. S78 OF S138 SHEETS

F.A.P. RTE.	SECTION	COUNTY	TOTAL SHEETS	SHEET NO.
799	1BR, DRS-2	ST. CLAIR	156	96
CONTRACT NO. 76B03				

ILLINOIS FED. AID PROJECT