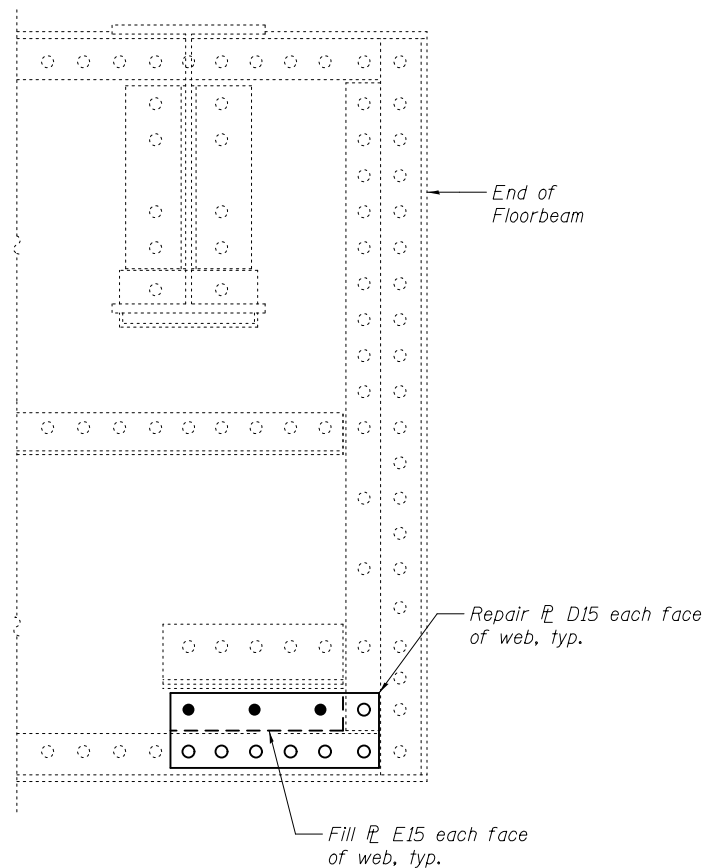


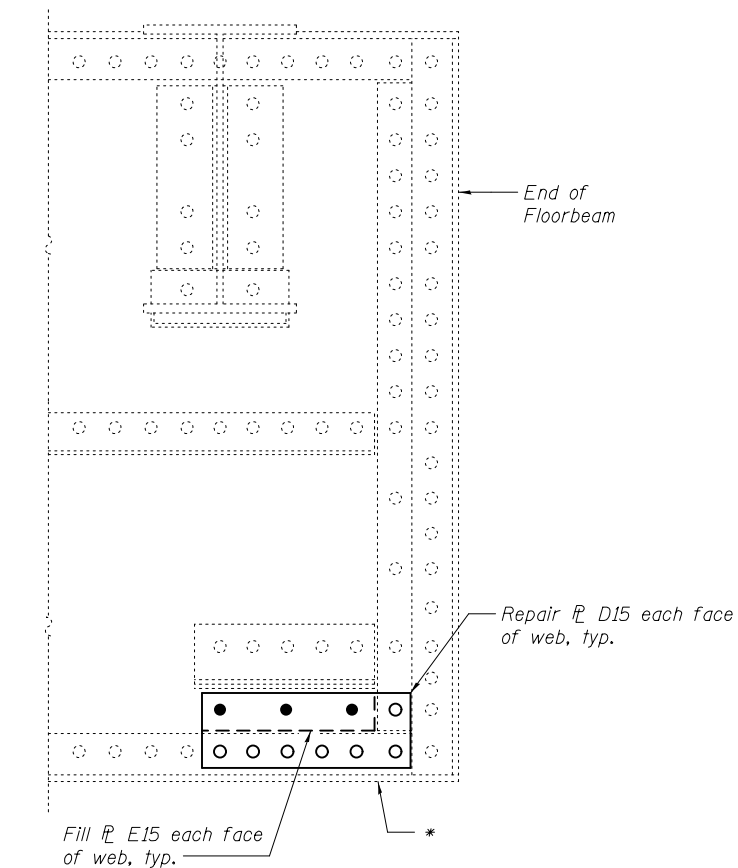
**NORTH END AT PANEL POINT L24**

East face shown  
(Span 10)



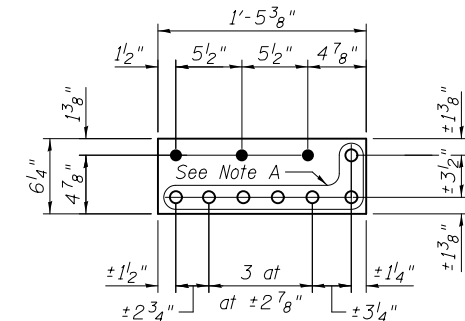
**SOUTH END AT PANEL POINT L23'**

West face shown  
(Span 10)

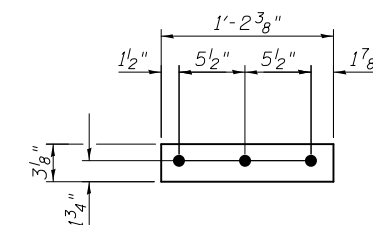


**NORTH END AT PANEL POINT L23**

East face shown  
(Span 10)



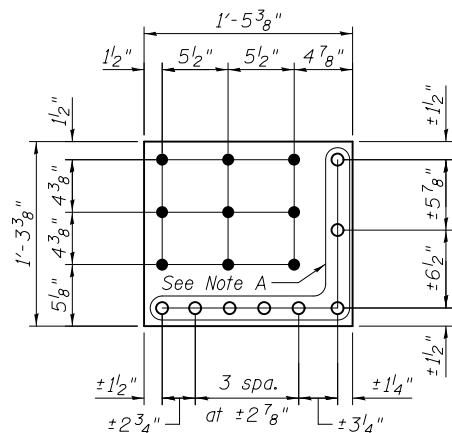
**REPAIR # D15**  
# 3/8" x 6 1/4" x 1'-5 3/8"



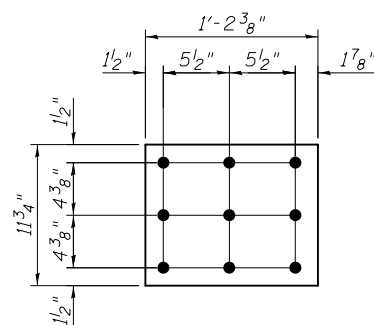
**FILL # E15**  
# 9/16" x 3 3/8" x 1'-2 3/8"

**FLOORBEAM WEB REPAIRS**

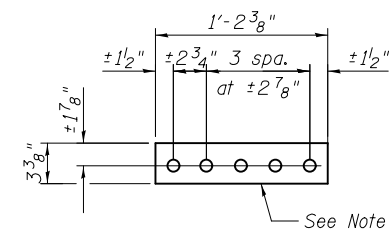
\* Remove delamination from bottom angle at floorbeam 23, north end. Grind smooth to an ANSI 250 finish. Cost included with Structural Steel Repair.



**REPAIR # A15**  
# 3/8" x 15 3/8" x 1'-5 3/8"



**FILL # B15**  
# 9/16" x 11 3/4" x 1'-2 3/8"



**FILL # C15**  
# 3/16" x 3 3/8" x 1'-2 3/8"

Note A:  
Field drill holes using existing holes as template. Remainder of holes may be shop or field drilled.

**BILL OF MATERIAL**

Item	Unit	Total
Structural Steel Repair	Pound	230



USER NAME =	DESIGNED - PRC	REVISED
	CHECKED - CDB	REVISED
PLOT SCALE =	DRAWN - PRC	REVISED
PLOT DATE = 03/20/2014	CHECKED - CDB	REVISED

STATE OF ILLINOIS  
DEPARTMENT OF TRANSPORTATION

MAIN SPANS FLOORBEAM WEB REPAIRS - 15  
S.N. 082-6001 MLK BRIDGE OVER MISSISSIPPI RIVER

SHEET NO. S79 OF S138 SHEETS

F.A.P. RTE.	SECTION	COUNTY	TOTAL SHEETS	SHEET NO.
799	1BR, DRS-2	ST. CLAIR	156	97
CONTRACT NO. 76B03				
ILLINOIS FED. AID PROJECT				