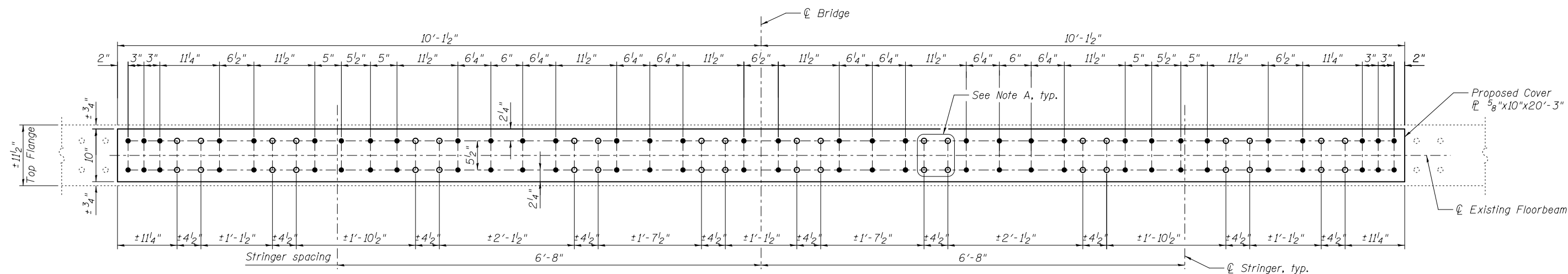


**TOP FLANGE STRENGTHENING  
AT END FLOORBEAM**  
(1 Location - Pier 11 Span 12)

Note A:  
Field drill holes using existing holes as template.  
Remainder of holes may be shop or field drilled.



**TOP FLANGE STRENGTHENING  
AT END FLOORBEAM**  
(1 Location - Pier 13 Span 13)

Note:  
For Bill of Material see sheet S82.



USER NAME =	DESIGNED - MEL	REVISED
	CHECKED - CDB	REVISED
PLOT SCALE =	DRAWN - PRC	REVISED
PLOT DATE = 03/20/2014	CHECKED - MEL	REVISED

**STATE OF ILLINOIS  
DEPARTMENT OF TRANSPORTATION**

**IL APPROACH END FLOORBEAM STRENGTHENING - 2  
SPANS 12 AND 13  
S.N. 082-6001 MLK BRIDGE OVER MISSISSIPPI RIVER**

SHEET NO. S83 OF S138 SHEETS

F.A.P. RTE.	SECTION	COUNTY	TOTAL SHEETS	SHEET NO.
799	IBR, DRS-2	ST. CLAIR	156	101
CONTRACT NO. 76B03				
ILLINOIS FED. AID PROJECT				