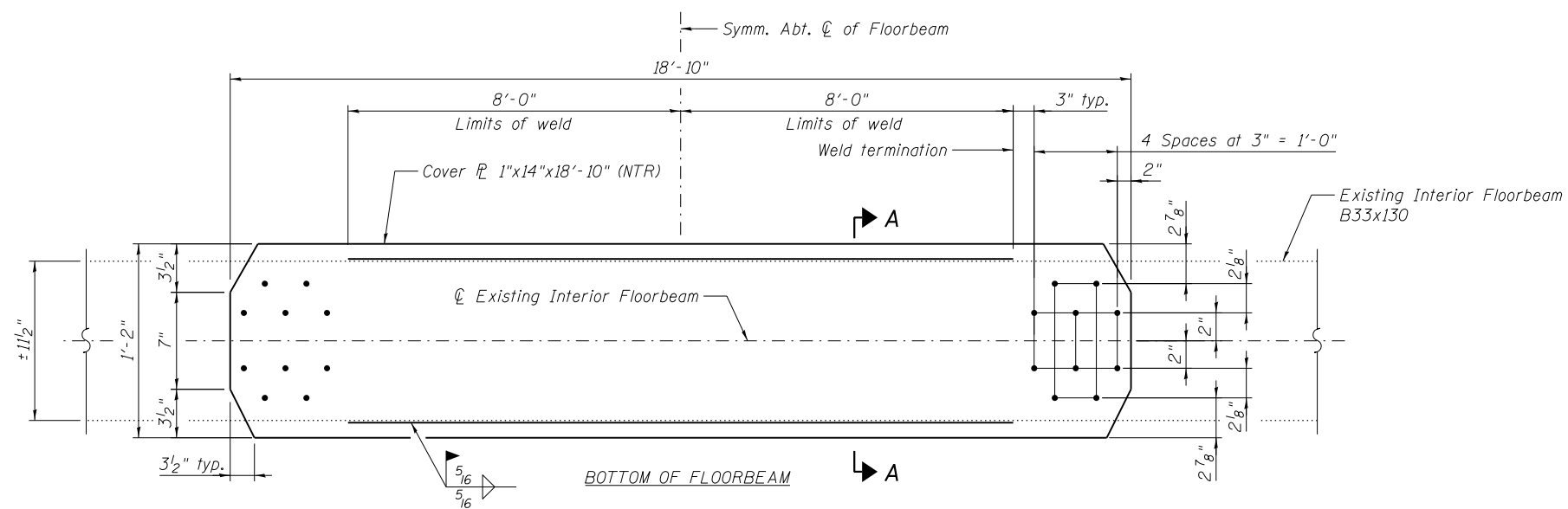
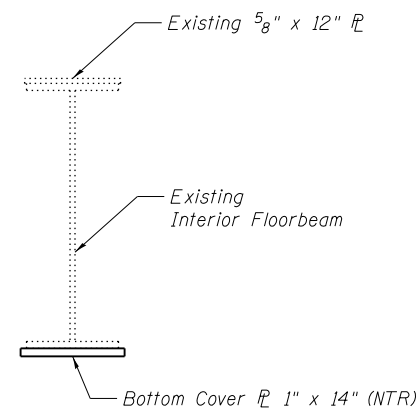


**DECK TRUSS
PARTIAL FRAMING PLAN
INTERIOR FLOORBEAM STRENGTHENING**
Spans 12 and 13



INTERIOR FLOORBEAM STRENGTHENING
(14 Locations)



SECTION A-A
(Deck and Stringers not shown for clarity.)

BILL OF MATERIAL

Item	Unit	Total
Structural Steel Repair	Pound	13,010

Note:
Load carrying components designated "NTR" shall conform to the Impact Testing Requirement, Zone 2.



USER NAME =	DESIGNED - MEL	REVISED
	CHECKED - CDB	REVISED
PLOT SCALE =	DRAWN - AEC	REVISED
PLOT DATE = 05/02/2014	CHECKED - MEL	REVISED

**STATE OF ILLINOIS
DEPARTMENT OF TRANSPORTATION**

**ILLINOIS APPROACH INTERIOR FLOORBEAM STRENGTHENING
SPANS 12 AND 13
S.N. 082-6001 MLK BRIDGE OVER MISSISSIPPI RIVER**

SHEET NO. S84 OF S138 SHEETS

F.A.P. RTE.	SECTION	COUNTY	TOTAL SHEETS	SHEET NO.
799	IBR, DRS-2	ST. CLAIR	156	102
CONTRACT NO. 76B03				
ILLINOIS FED. AID PROJECT				