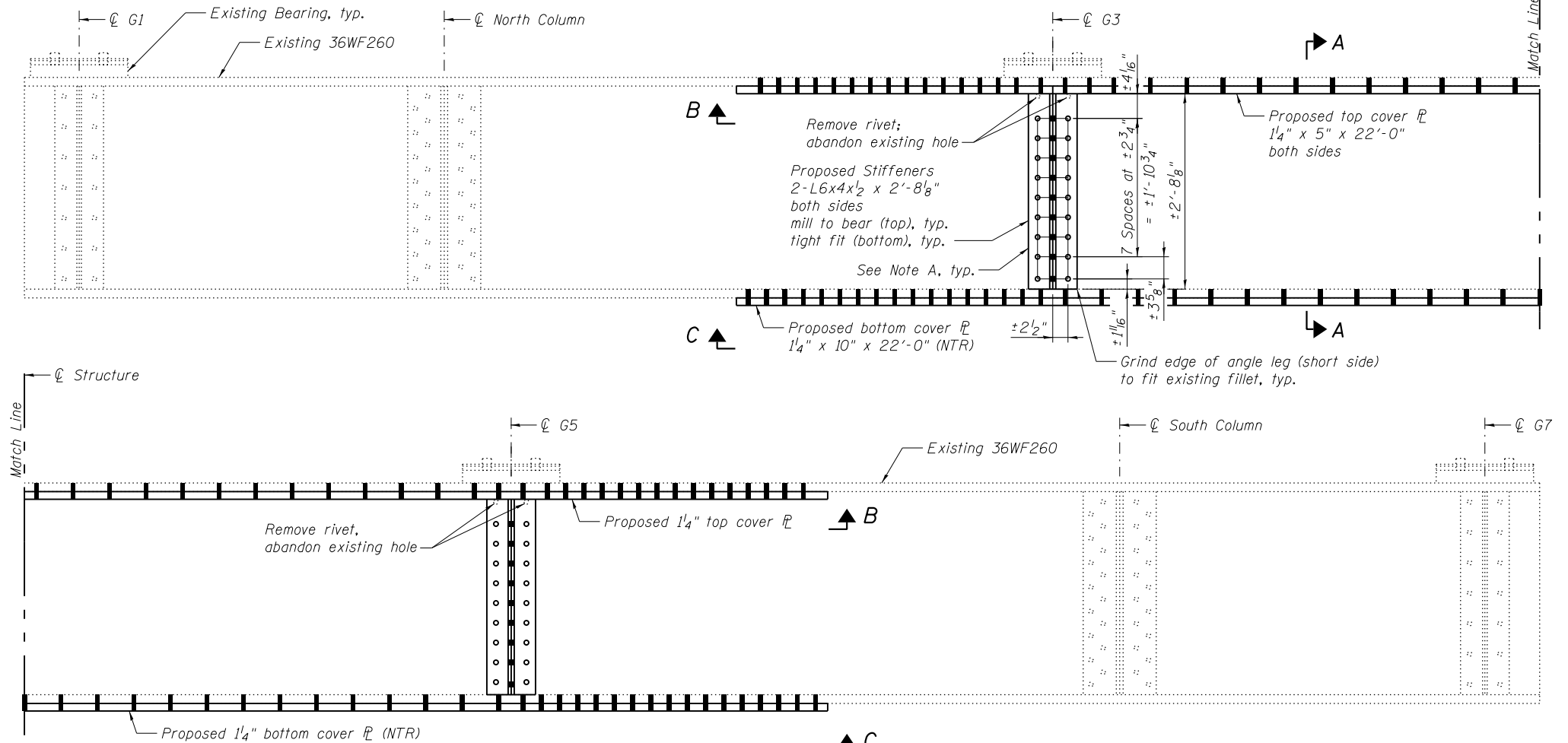


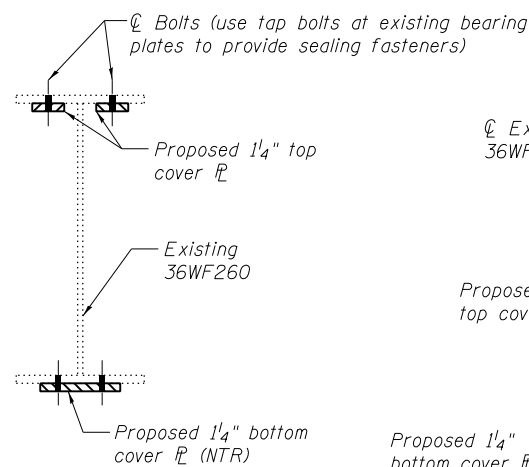
BENT 3
(Looking East)

Procedure:
Remove and install bottom cover plate.

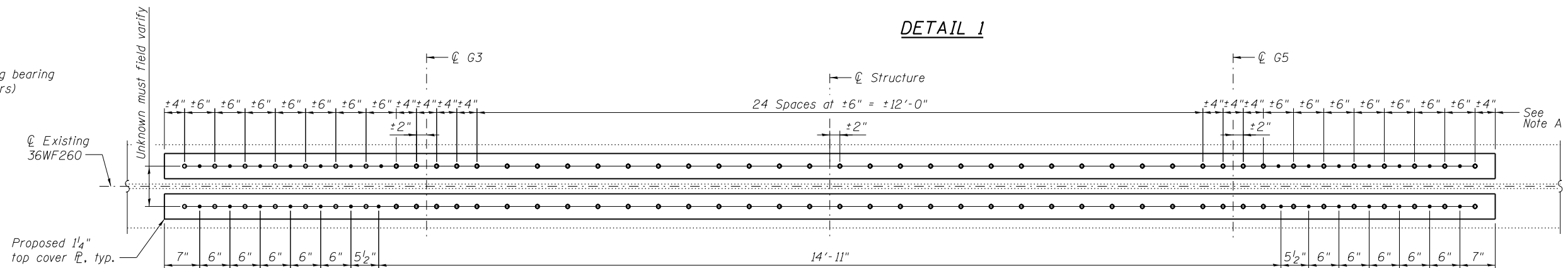
After bottom cover plate is installed, remove and install top cover plate.



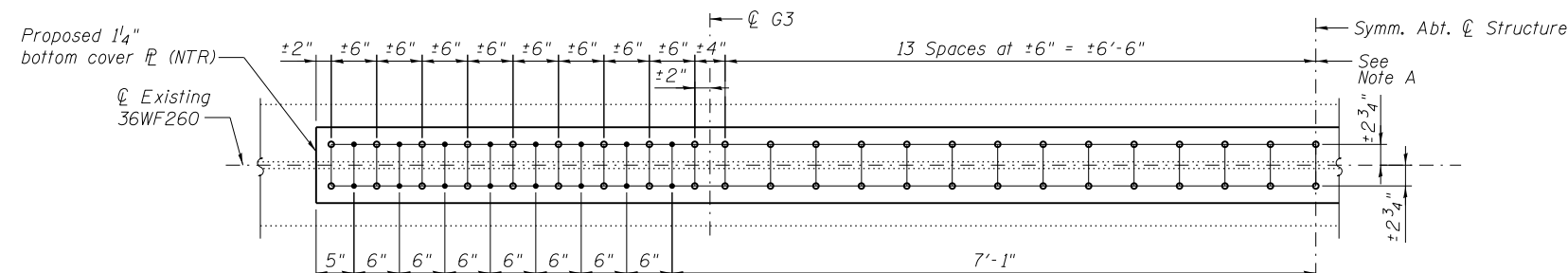
DETAIL 1



SECTION A-A



SECTION B-B



VIEW C-C

Note A:
Field drill holes using existing holes as template.
Remainder of holes may be shop or field drilled.

BILL OF MATERIAL

Item	Unit	Total
Structural Steel Repair	Pound	2,420

Notes:
All bolted connections shown on this sheet shall be made with 3/4" dia. H.S. bolts.
Load carrying components designated "NTR" shall conform to the Impact Testing Requirement, Zone 2.



USER NAME =
DESIGNED - YSS
CHECKED - ZAC
PLOT SCALE =
DRAWN - AEC
PLOT DATE = 05/02/2014
CHECKED - YSS

DESIGNED - YSS
CHECKED - ZAC
DRAWN - AEC
CHECKED - YSS

REVISED
REVISED
REVISED
REVISED

STATE OF ILLINOIS
DEPARTMENT OF TRANSPORTATION

MISSOURI APPROACH BENT 3 REPAIRS
S.N. 082-6001 MLK BRIDGE OVER MISSISSIPPI RIVER

SHEET NO. S109 OF S138 SHEETS

F.A.P. RTE.	SECTION	COUNTY	TOTAL SHEETS	SHEET NO.
799	IBR, DRS-2	ST. CLAIR	156	127
CONTRACT NO. 76B03				

ILLINOIS FED. AID PROJECT