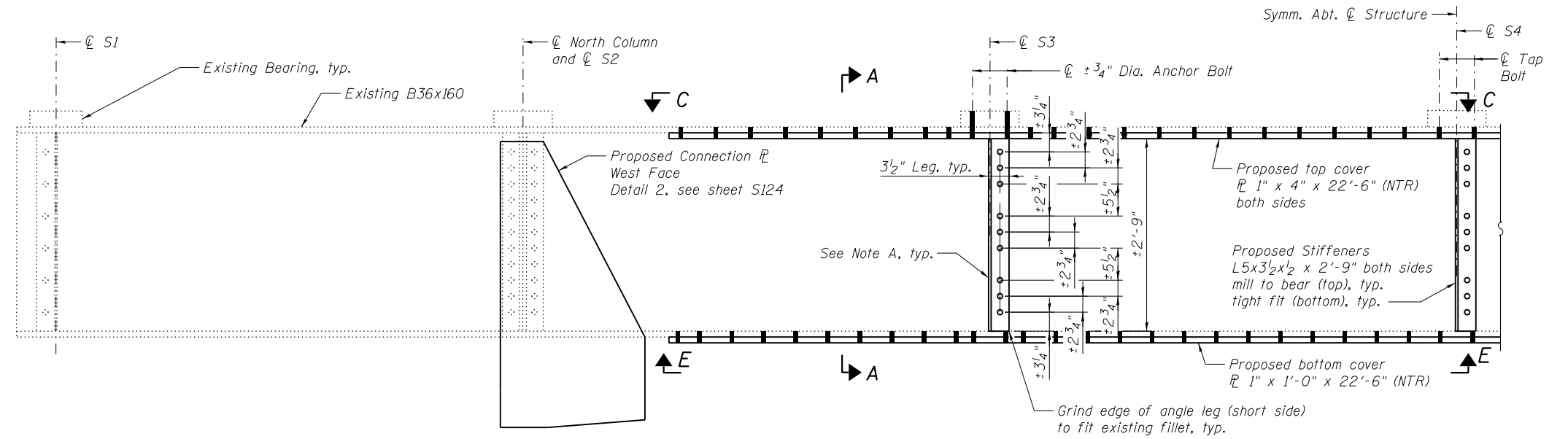
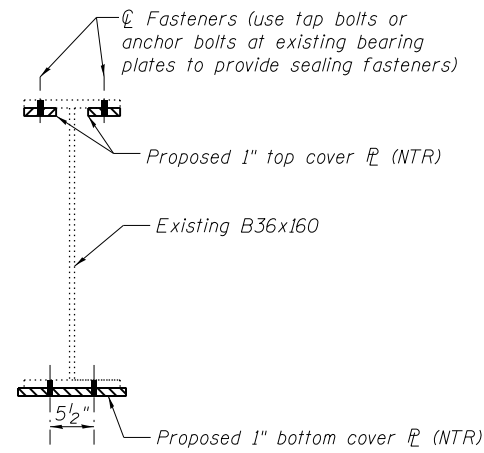


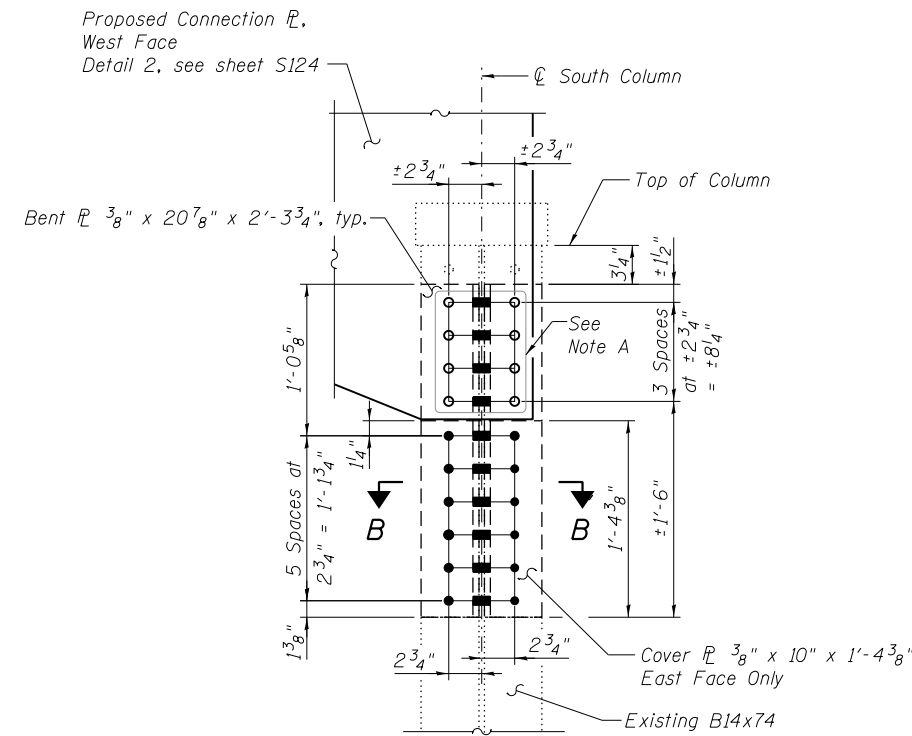
BENT 27
(Looking East)



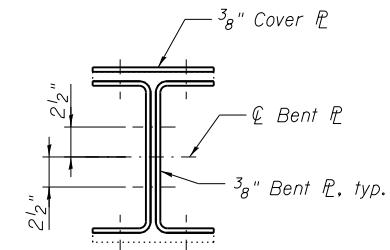
DETAIL 1



SECTION A-A



DETAIL 3



SECTION B-B

BILL OF MATERIAL

Item	Unit	Total
Structural Steel Repair	Pound	2,970

Notes:
 All bolted connections shown on this sheet shall be made with 3/4" dia. H.S. bolts.
 Load carrying components designated "NTR" shall conform to the Impact Testing Requirement, Zone 2.
 For View C-C and View E-E details, see sheet S124.

Note A:
 Field drill holes using existing holes as template.
 Remainder of holes may be shop or field drilled.



USER NAME =	DESIGNED - YSS	REVISED
	CHECKED - ZJB	REVISED
PLOT SCALE =	DRAWN - AEC	REVISED
PLOT DATE = 05/02/2014	CHECKED - YSS	REVISED

STATE OF ILLINOIS
DEPARTMENT OF TRANSPORTATION

ILLINOIS APPROACH BENT 27 REPAIRS - 1
S.N. 082-6001 MLK BRIDGE OVER MISSISSIPPI RIVER

SHEET NO. S119 OF S138 SHEETS

F.A.P. RTE.	SECTION	COUNTY	TOTAL SHEETS	SHEET NO.
799	IBR, DRS-2	ST. CLAIR	156	137
CONTRACT NO. 76B03				
ILLINOIS FED. AID PROJECT				