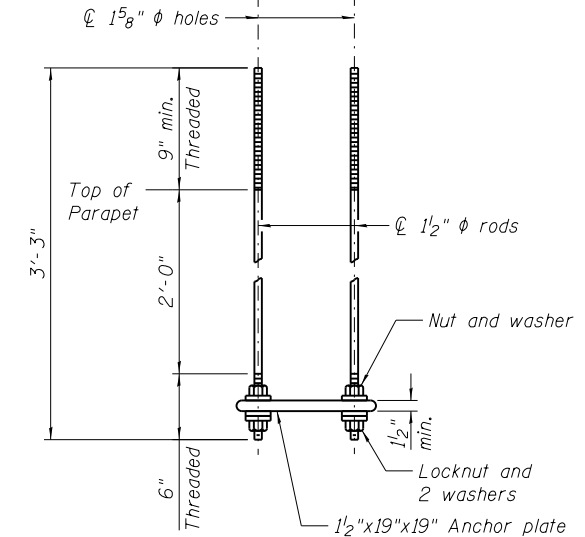
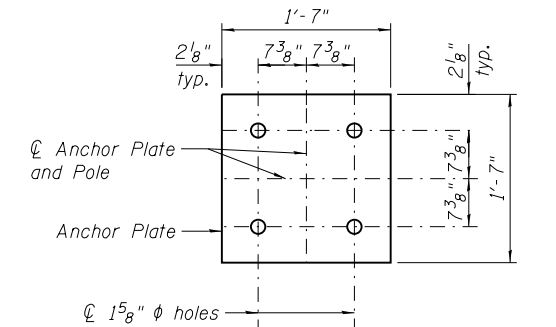
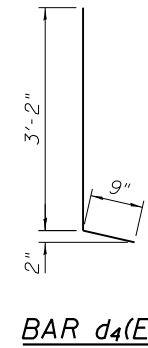
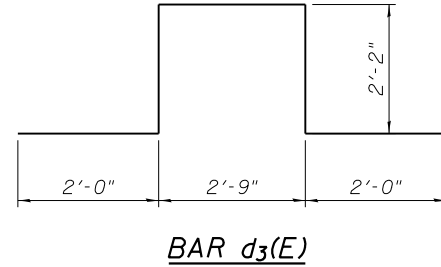
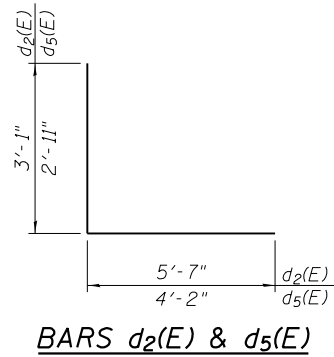


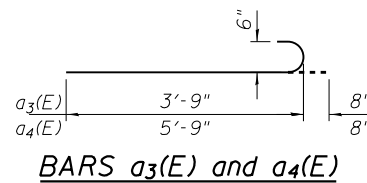
BILL OF MATERIAL

| Bar | No. | Size | Length | Shape |
|----------------------------------|-----|---------|--------|-------|
| a ₂ (E) | 6 | #5 | 2'-0" | — |
| a ₃ (E) | 20 | #6 | 4'-5" | — |
| a ₄ (E) | 16 | #6 | 6'-5" | — |
| d ₂ (E) | 10 | #6 | 8'-8" | — |
| d ₃ (E) | 10 | #6 | 11'-1" | — |
| d ₄ (E) | 18 | #5 | 3'-11" | — |
| d ₅ (E) | 10 | #6 | 7'-1" | — |
| d ₆ (E) | 18 | #5 | 4'-7" | — |
| e(E) | 12 | #4 | 7'-3" | — |
| e ₁ (E) | 4 | #8 | 7'-3" | — |
| e ₂ (E) | 4 | #5 | 7'-3" | — |
| Concrete Removal | | Cu. Yd. | 3.3 | |
| Concrete Superstructure | | Cu. Yd. | 4.8 | |
| Reinforcement Bars, Epoxy Coated | | Pound | 1030 | |

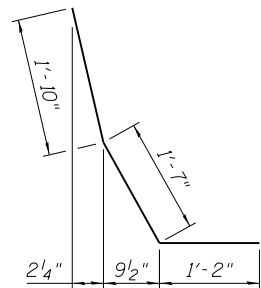


ANCHOR ROD DETAIL

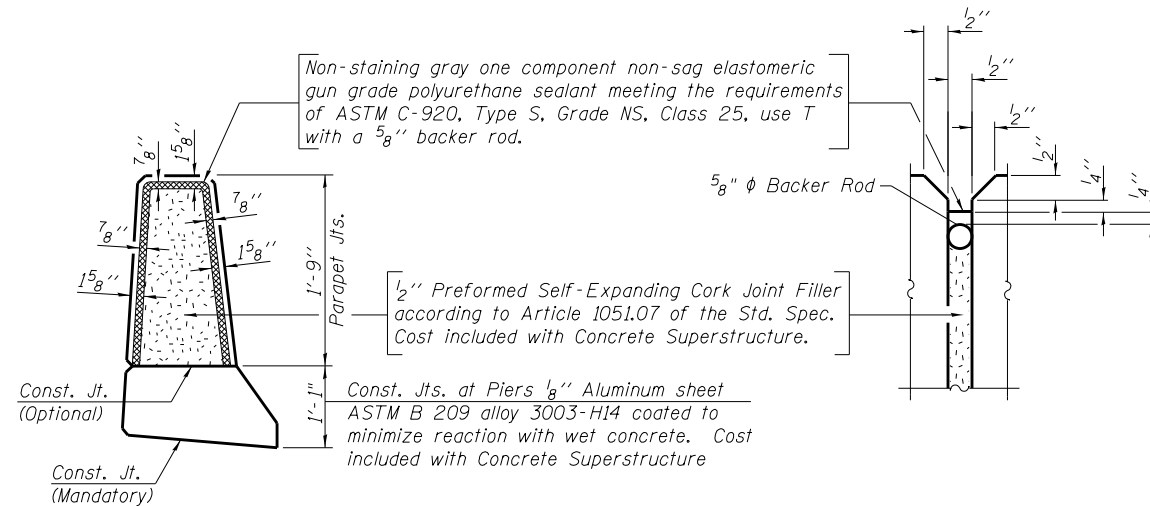
Entire assembly hot dipped galvanized



BARS a₃(E) and a₄(E)

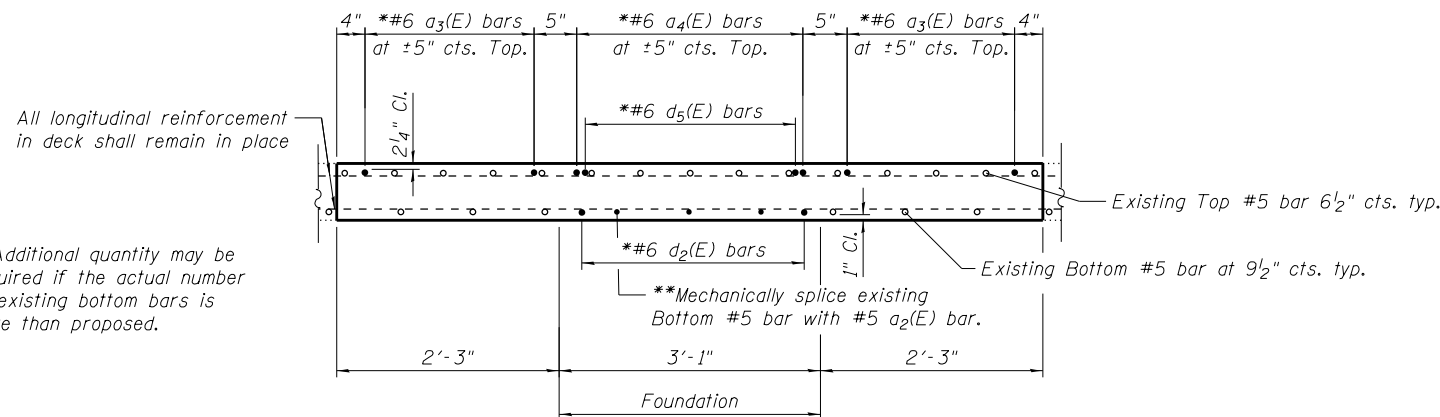


BAR d₆(E)

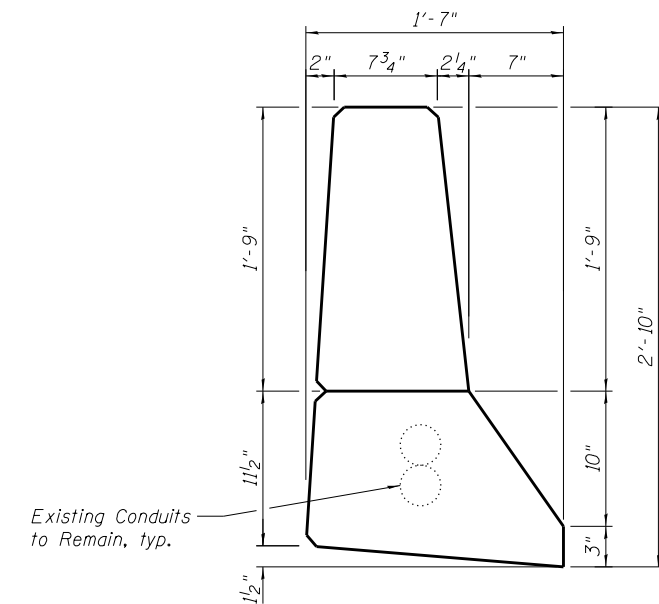


PARAPET JOINT DETAILS

*Adjust bar locations as required to miss existing reinforcement.



PROPOSED DECK ELEVATION



PARAPET DETAILS