

GENERAL NOTES

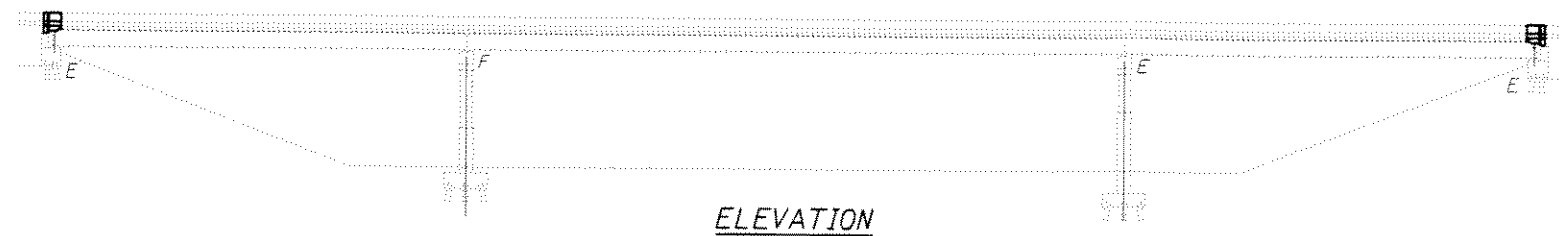
Existing reinforcement bars extending into the removal area shall be cleaned, straightened and incorporated into the new construction. Any reinforcement bars that are damaged during concrete removal shall be replaced with an approved bar splicer or anchorage system. Cost included with Concrete Removal.

Joint openings shall be adjusted according to Article 520.04 of the Std. Specs. when the deck is poured at an ambient temperature other than 50° F.

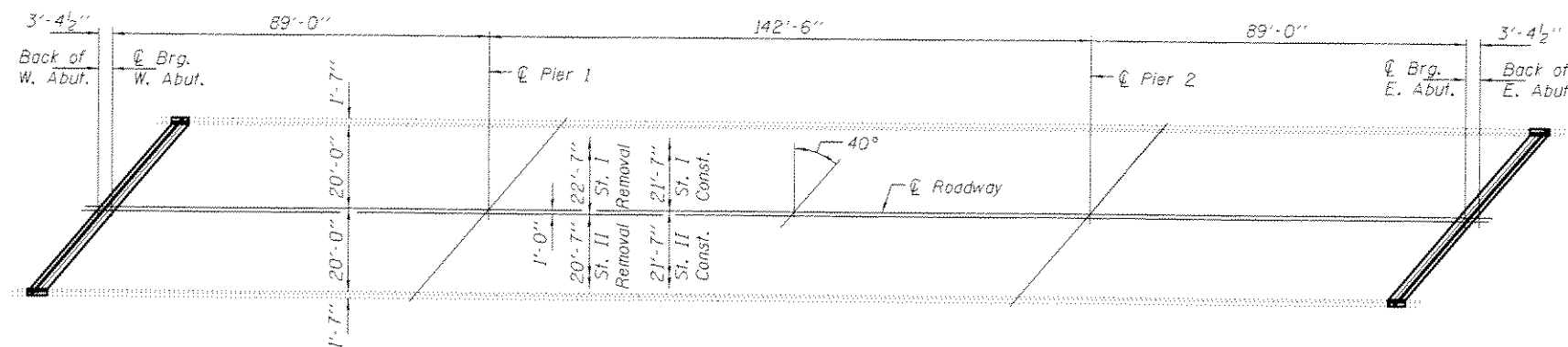
Prior to pouring the new concrete deck, all heavy or loose rust, loose mill scale, and other loose or potentially detrimental foreign material shall be removed from the surfaces in contact with concrete. Tightly adhered paint may remain unless otherwise noted. Removal shall be accomplished by methods that will not damage the steel and the cost will be included in the pay item covering removal of the existing concrete.

Reinforcement bars designated (E) shall be epoxy coated. Plan dimensions and details relative to existing plans are subject to nominal construction variations. The Contractor shall field verify existing dimensions and details affecting new construction and make necessary approved adjustments prior to construction or ordering of materials. Such variations shall not be cause for additional compensation for a change in scope of the work, however, the Contractor will be paid for the quantity actually furnished at the unit price bid for the work.

The deck surface shall have its final finish tined according to Article 420.09(e)(1) of the Standard Specifications. Cost included with Concrete Superstructure.



ELEVATION



PLAN

PRE-FINAL
DATE: 9/30/2013

EXPIRES 11-30-2014

TOTAL BILL OF MATERIAL

ITEM	UNIT	QUANTITY
Concrete Removal	Cu. Yd.	17.3
Concrete Superstructure	Cu. Yd.	17.5
Preformed Joint Strip Seal	Foot	109
Reinforcement Bars, Epoxy Coated	Pound	2210
Bar Splicers	Each	28
Protective Coat	Sq. Yd.	55

* On new concrete only

DESIGNED	EXAMINED	DATE
CHECKED	ACTING ENGINEER OF STRUCTURAL SERVICES	SEPTEMBER 30, 2013
DRAWN <i>baliva</i>	PASSED	REVISED
CHECKED	ACTING ENGINEER OF BRIDGES AND STRUCTURES	REVISED

**STATE OF ILLINOIS
DEPARTMENT OF TRANSPORTATION**

**PLAN AND ELEVATION
FAP 327 (US50) OVER IC RR
SN 061-0082**

F.A.P. R.T.E.	SECTION	COUNTY	TOTAL SHEETS	SHEET NO.
327	-	MARTON	-	-
SHEET NO. 1 OF 6 SHEETS			CONTRACT NO.	
ILLINOIS FED. AID PROJECT				