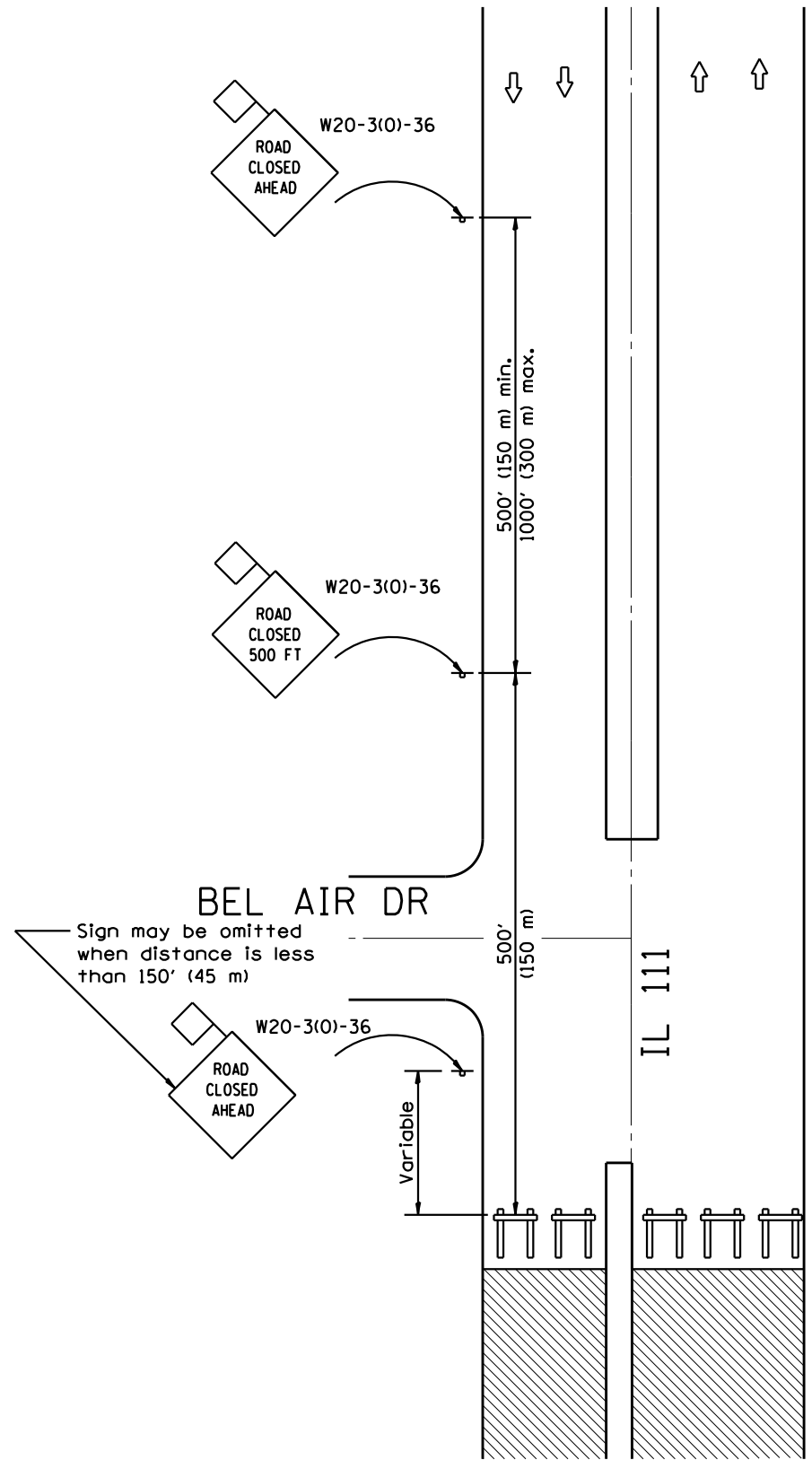


IL 111 AND BEL AIR DR



GENERAL NOTES

Type III Barricades and R11-2-4830 signs shall be positioned as shown in "Road Closed To All Traffic" detail on Highway Standard 701901.

Two Type A Low Intensity Flashing Lights shall be used on each approach in advance of the work area during hours of darkness. One light shall be installed above the barricades and the other above the first advance warning sign.

All warning signs shall have minimum dimensions of 36 x 36 (900 x 900) and have a black legend on an orange reflectorized background.


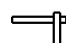

When fluorescent signs are used, orange flags are not required.

Longitudinal dimensions may be adjusted to fit field conditions.

When the distance between the barricade and the intersection is between 1500' (450 m) and 2000' (600 m), the advance sign shall be placed at the intersection. When the distance between the barricade and the intersection is over 2000' (600 m), an additional sign shall be placed at the intersection. The additional sign shall give the distance to the barricade in miles or fractions of a mile.

All dimensions are in inches (millimeters) unless otherwise shown.

SYMBOLS

-  Work area
-  Type III Barricade
-  Sign with 18x18 (450x450) min. orange flag attached

*FAP 582/FAU 9079

FILE NAME = \$FILEL\$	USER NAME = \$USER\$	DESIGNED -	REVISED -	STATE OF ILLINOIS DEPARTMENT OF TRANSPORTATION	TRAFFIC CONTROL AND PROTECTION, SPECIAL STAGE 1 CLOSURE				F.A. RTÉ.	SECTION	COUNTY	TOTAL SHEETS	SHEET NO.
\$MODELNAME\$	PLOT SCALE = \$SCALE\$	DRAWN -	REVISED -		SCALE:	SHEET	OF	SHEETS	STA.	TO STA.	MADISON	73	23
	PLOT DATE = \$DATE\$	CHECKED -	REVISED -								CONTRACT NO. 76F41		
		DATE -	REVISED -								ILLINOIS FED. AID PROJECT		