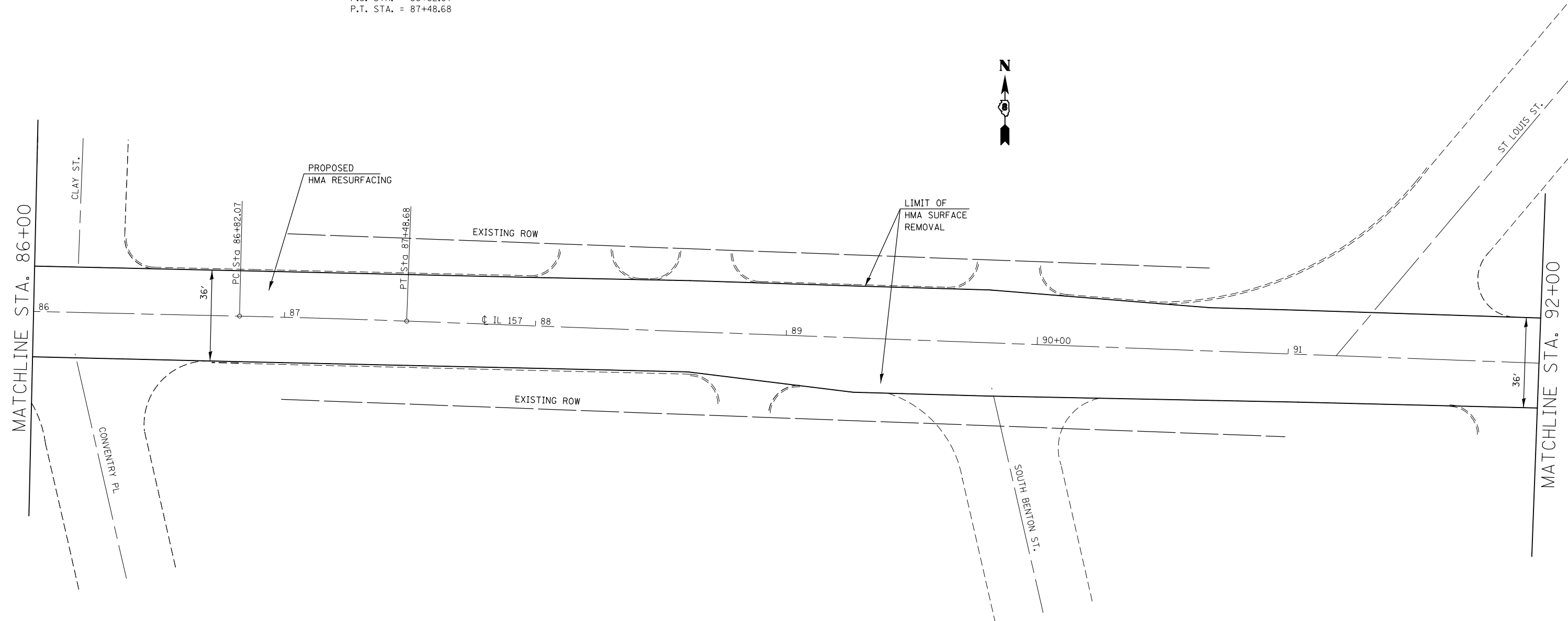


EXIST. CURVE C16
 PI STA. = 87+15.38
 $\Delta = 0^\circ 49' 44''$ (RT)
 D = 1° 14' 40"
 R = 4,603.97'
 T = 33.30'
 L = 66.61'
 E = 0.12'
 e = -----
 T.R. = -----
 S.E. RUN = -----
 P.C. STA. = 86+82.07
 P.T. STA. = 87+48.68



FILE NAME =	USER NAME = manntm	DESIGNED -	REVISED -
et:\pw\work\p1\dot\manntm\d0351090\0876071-sh1-pln.dgn		DRAWN -	REVISED -
	PLOT SCALE = 40.0000' / in.	CHECKED -	REVISED -
	PLOT DATE = 3/20/2014	DATE -	REVISED -

**STATE OF ILLINOIS
 DEPARTMENT OF TRANSPORTATION**

PLAN VIEW

SCALE: 1"=20" SHEET NO. 5 OF 23 SHEETS STA. TO STA.

FAP/ROUTE.	SECTION	COUNTY	TOTAL SHEETS	SHEET NO.
•	(7Z, 56)RS-1, 65-2RS-4	MADISON	74	16
CONTRACT NO. 76G71				
FED. ROAD DIST. NO. ILLINOIS FED. AID PROJECT				