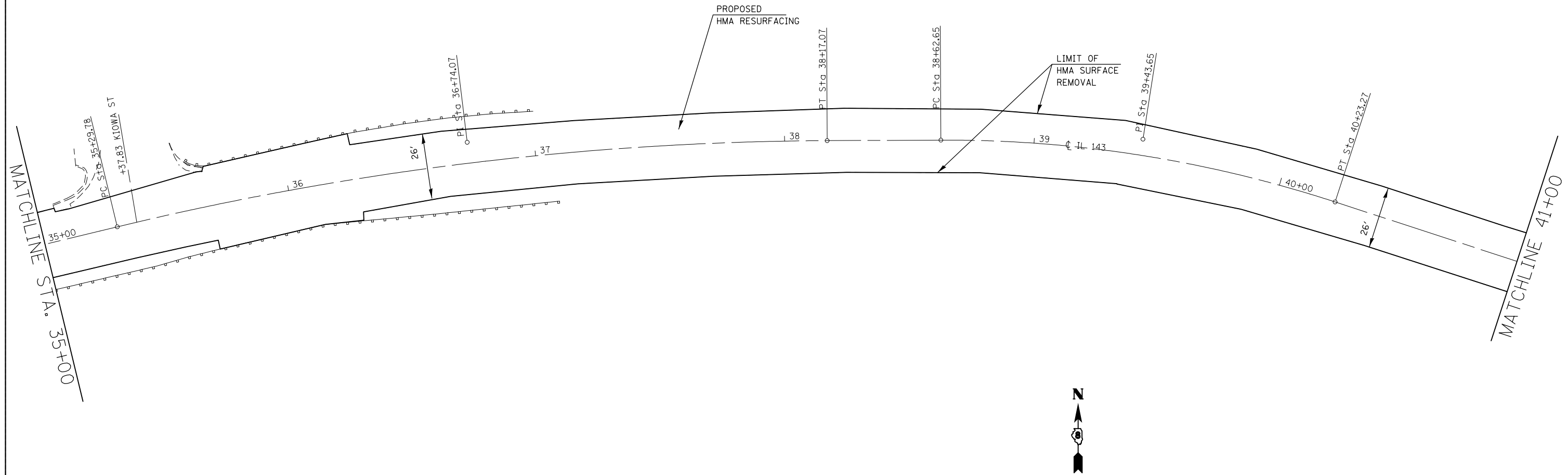


EXIST. CURVE C9  
 PI STA. = 39+43.65  
 $\Delta$  = 18° 20' 06" (RT)  
 D = 11° 24' 56"  
 R = 501.91'  
 T = 81.00'  
 L = 160.62'  
 E = 6.49'  
 e = -----  
 T.R. = -----  
 S.E. RUN = -----  
 P.C. STA. = 38+62.65  
 P.T. STA. = 40+23.27



EXIST. CURVE C8  
 PI STA. = 36+74.07  
 $\Delta$  = 13° 18' 40" (RT)  
 D = 4° 38' 00"  
 R = 1,236.62'  
 T = 144.30'  
 L = 287.29'  
 E = 8.39'  
 e = -----  
 T.R. = -----  
 S.E. RUN = -----  
 P.C. STA. = 35+29.78  
 P.T. STA. = 38+17.07

FILE NAME =	USER NAME = manntm	DESIGNED -	REVISED -
et:\pw\work\p\dot\mann\m\0351090\0876071-sh-t-plan.dgn		DRAWN -	REVISED -
PLOT SCALE = 40.0000' / in.		CHECKED -	REVISED -
PLOT DATE = 3/20/2014		DATE -	REVISED -

**STATE OF ILLINOIS  
 DEPARTMENT OF TRANSPORTATION**

<b>PLAN VIEW</b>			
SCALE: 1"=20'	SHEET NO. 16 OF 23 SHEETS	STA.	TO STA.

FAP/ROUTE.	SECTION	COUNTY	TOTAL SHEETS	SHEET NO.
•	(7Z, 56)RS-1, 65-2RS-4	MADISON	74	27
CONTRACT NO. 76G71				
FED. ROAD DIST. NO. ILLINOIS FED. AID PROJECT				