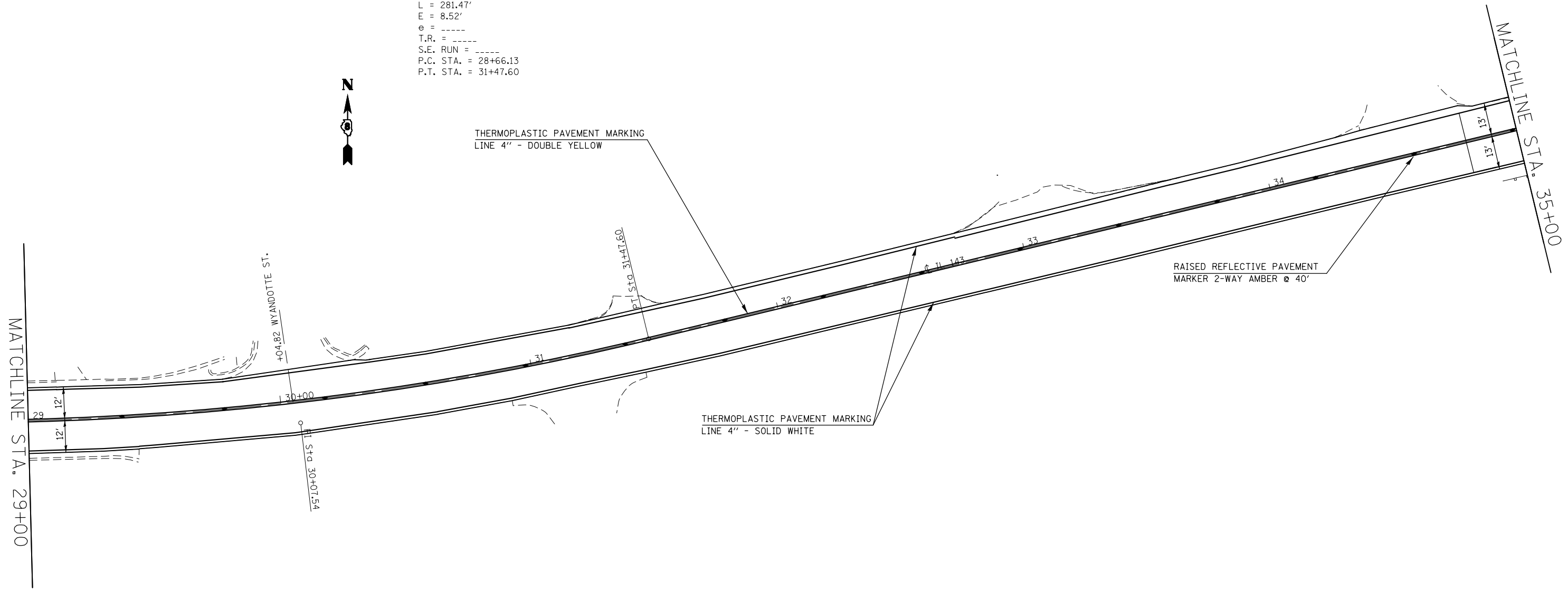


EXIST. CURVE C7
 PI STA. = 30+07.54
 $\Delta = 13^\circ 47' 01''$ (LT)
 $D = 4^\circ 53' 49''$
 $R = 1,170.02'$
 $T = 141.42'$
 $L = 281.47'$
 $E = 8.52'$
 $e = \text{-----}$
 $T.R. = \text{-----}$
 $S.E. \text{ RUN} = \text{-----}$
 P.C. STA. = 28+66.13
 P.T. STA. = 31+47.60



STATION	THERMOPLASTIC PAVEMENT MARKING, LINE - 4" (FOOT)		TEMPORARY PAVEMENT MARKING LINE - 4" (FOOT)			THERMOPLASTIC PAVEMENT MARKING LINE - 6" (FOOT)	TEMPORARY PAVEMENT MARKING LINE - 6" (FOOT)	THERMOPLASTIC PAVEMENT MARKING LINE - 8" (FOOT)	TEMPORARY PAVEMENT MARKING LINE - 8" (FOOT)	THERMOPLASTIC PAVEMENT MARKING LINE - 12" (FOOT)	TEMPORARY PAVEMENT MARKING LINE - 12" (FOOT)	THERMOPLASTIC PAVEMENT MARKING LINE - 24" (FOOT)	TEMPORARY PAVEMENT MARKING LINE - 24" (FOOT)	SHORT TERM PAVEMENT MARKING (FOOT)	RAISED RELECTIVE PAVEMENT MARKERS (EACH)		RAISED RELECTIVE PAVT. MRK. REMOVAL (EACH)	WORK ZONE PAVEMENT MRK. REM. (SQ FT)	THERMOPLASTIC PAVEMENT MARKING - LETTERS & SYMBOLS (SQ FT)	TEMPORARY PAVEMENT MARKING - LETTERS & SYMBOLS (SQ FT)
	SOLID WHITE	SKIP-DASH YELLOW	SOLID WHITE	SKIP-DASH YELLOW	SOLID YELLOW										1-WAY CRYSTAL	2-WAY AMBER				
29+00.00 TO 35+00.00	1200.0	0.0	1200.0	0.0	1200.0	0.0	0.0	0.0	0.0	0.0	0.0	0.0	0.0	69.0	0	16	16	823.0	0.0	0.0
TOTAL THIS PAGE	2400.0		2400.0			0.0	0.0	0.0	0.0	0.0	0.0	0.0	0.0	276.0	16		16	823.0	0.0	0.0
SUB-TOTAL	22022.7		22022.7			649.3	649.3	213.1	213.1	444.4	444.4	1250.0	1250.0	3705.4	359		359	13087.4	941.8	941.8

FILE NAME =	USER NAME = \$USER*	DESIGNED -	REVISED -	STATE OF ILLINOIS DEPARTMENT OF TRANSPORTATION	PAVEMENT MARKING PLAN			F.A.P. RTE.	SECTION	COUNTY	TOTAL SHEETS	SHEET NO.
\$FILEL\$		DRAWN -	REVISED -					*	(7Z, 56)RS-1, 65-2RS-4	MADISON	74	66
	PLOT SCALE = \$SCALE*	CHECKED -	REVISED -					CONTRACT NO. 76G71				
	PLOT DATE = \$DATE*	DATE -	REVISED -					FED. ROAD DIST. NO.	ILLINOIS FED. AID PROJECT			