

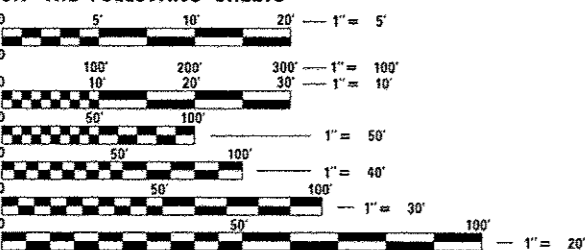
**INDEX OF SHEETS**

1	COVER SHEET
2	GENERAL NOTES
3-6	SUMMARY OF QUANTITIES
7-8	TYPICAL SECTIONS
9-10	SCHEDULE OF QUANTITIES
11	ROADWAY PLAN KEYMAP
12-13	ROADWAY PLAN - CAMP JACKSON ROAD/ IL ROUTE 157 (LAURALEE TO IL ROUTE 13/ 157)
14	ROADWAY PLAN - NORTH 89TH STREET (NORTH OF STATE STREET)
15	ROADWAY PLAN - NORTH 89TH STREET (NORTH OF ST. CLAIR AVENUE) & 13TH STREET
16	GENERAL DETAILS
17-18	PAVEMENT MARKING PLAN - CAMP JACKSON ROAD/ IL ROUTE 157 (LAURALEE TO IL ROUTE 13/ 157)
19	PAVEMENT MARKING DETAILS

**HIGHWAY STANDARDS**

000001-06	STANDARD SYMBOLS, ABBREVIATIONS AND PATTERNS
001006	DECIMAL OF AN INCH AND OF A FOOT
424006-01	DIAGONAL CURB RAMPS FOR SIDEWALKS
442201-03	CLASS C AND D PATCHES
482011-03	HMA SHLD, STRIPS/SHLDS, WITH RESURFACING OR WIDENING AND RESURFACING PROJECTS
606001-05	CONCRETE CURB TYPE B AND COMBINATION CONCRETE CURB AND GUTTER
630001-10	STEEL PLATE BEAM GUARDRAIL
635006-03	REFLECTOR AND TERMINAL MARKER PLACEMENT
635011-02	REFLECTOR MARKER AND MOUNTING DETAILS
701006-05	OFF-RD OPERATIONS, 2L, 2W, 15' (4.5 m) TO 24" (600 mm) FROM PAVEMENT EDGE
701011-04	OFF-RD MOVING OPERATIONS, 2L, 2W, DAY ONLY
701301-04	LANE CLOSURE, 2L, 2W, SHORT TIME OPERATIONS
701311-03	LANE CLOSURE, 2L, 2W MOVING OPERATIONS - DAY ONLY
701336-06	LANE CLOSURE, 2L, 2W, WORK AREAS IN SERIES, FOR SPEEDS ≥ 45 MPH
701501-06	URBAN LANE CLOSURE, 2L, 2W, UNDIVIDED
701801-05	SIDEWALK, CORNER OR CROSSWALK CLOSURE
701901-03	TRAFFIC CONTROL DEVICES
720001-01	SIGN PANEL MOUNTING DETAILS
720006-04	SIGN PANEL ERECTION DETAILS
728001-01	TELESCOPING STEEL SIGN SUPPORT
780001-04	TYPICAL PAVEMENT MARKINGS
781001-03	TYPICAL APPLICATIONS RAISED REFLECTIVE PAVEMENT MARKERS
782001	PRISMATIC CURB REFLECTORS

MICROFILMED \_\_\_\_\_  
 REEL NUMBER \_\_\_\_\_  
 AWARDED \_\_\_\_\_  
 RESIDENT ENGINEER \_\_\_\_\_  
 AS BUILT CHANGES WERE MADE  
 ON THE FOLLOWING SHEETS



FULL SIZE PLANS HAVE BEEN PREPARED USING STANDARD ENGINEERING SCALES. REDUCED SIZED PLANS WILL NOT CONFORM TO STANDARD SCALES. IN MAKING MEASUREMENTS ON REDUCED PLANS, THE ABOVE SCALES MAY BE USED.

J.U.L.I.E.  
 JOINT UTILITY LOCATION INFORMATION FOR EXCAVATION  
 1-800-892-0123  
 or 811

13TH STREET  
 FUNCTIONAL CLASSIFICATION: LOCAL STREET  
 2014 ADT: 2400  
 MU %: NA  
 SU %: NA

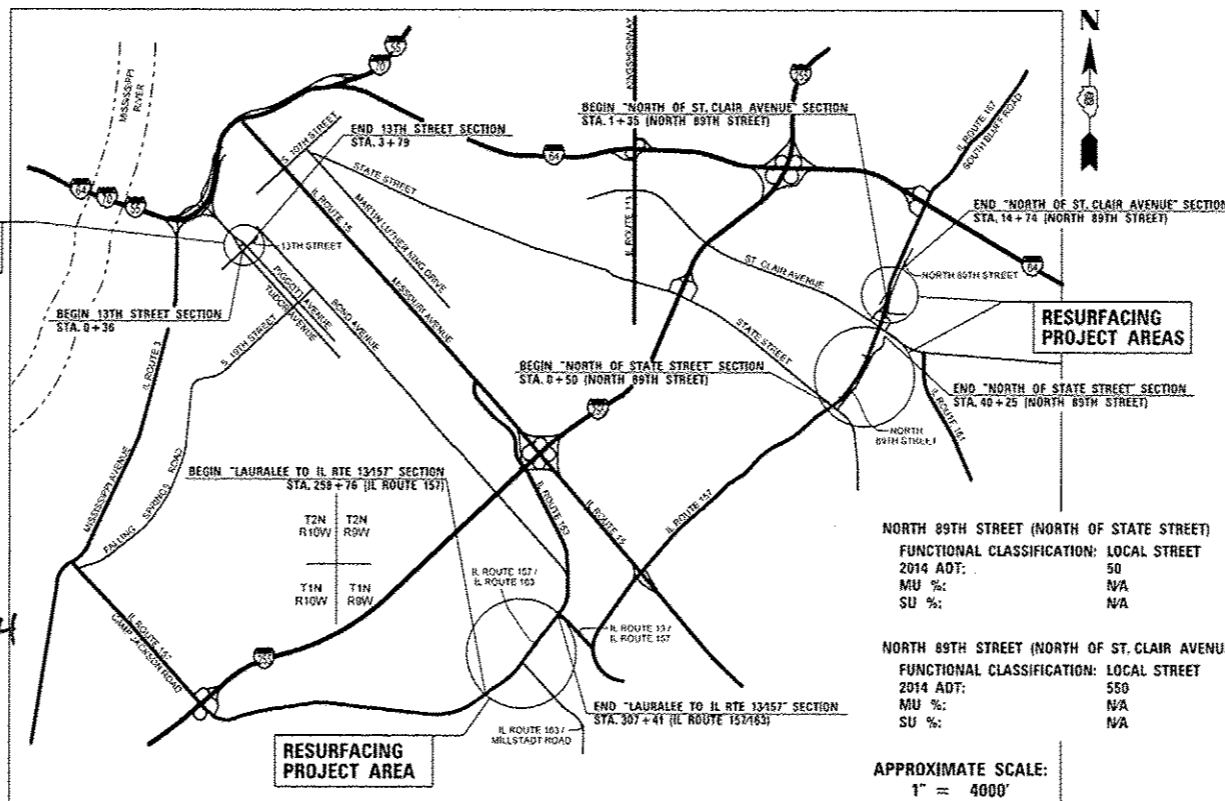


*John Hock* 4-11-14  
 JOHN HOCK DATE  
 LICENSE EXPIRES 11/30/2015  
 SHEET RANGE 1 - 29

PROJECT ENGINEER **TIM PADGETT (618) 346-3325**  
 SQUAD LEADER **DONALD HAYDEN (618) 346-3194**  
 CONTRACT NO. 76H23

**STATE OF ILLINOIS**  
**DEPARTMENT OF TRANSPORTATION**  
**DIVISION OF HIGHWAYS**  
**PROPOSED**  
**HIGHWAY PLANS**  
**VARIOUS ROUTES**  
**DIST 8 RESURFACING 2014-5**  
**PROJECT NO.**  
**RESURFACING AT VARIOUS LOCATIONS**  
**IN THE METRO EAST**  
**ST. CLAIR COUNTY**  
**C-98-049-14**

IL ROUTE 157 /CAMP JACKSON ROAD (LAURALEE TO IL ROUTE 13/157)  
 FUNCTIONAL CLASSIFICATION: PRINCIPAL ARTERIAL  
 2014 ADT: 8700  
 MU %: 1.2%  
 SU %: 2.2%



NORTH 89TH STREET (NORTH OF STATE STREET)  
 FUNCTIONAL CLASSIFICATION: LOCAL STREET  
 2014 ADT: 50  
 MU %: N/A  
 SU %: N/A

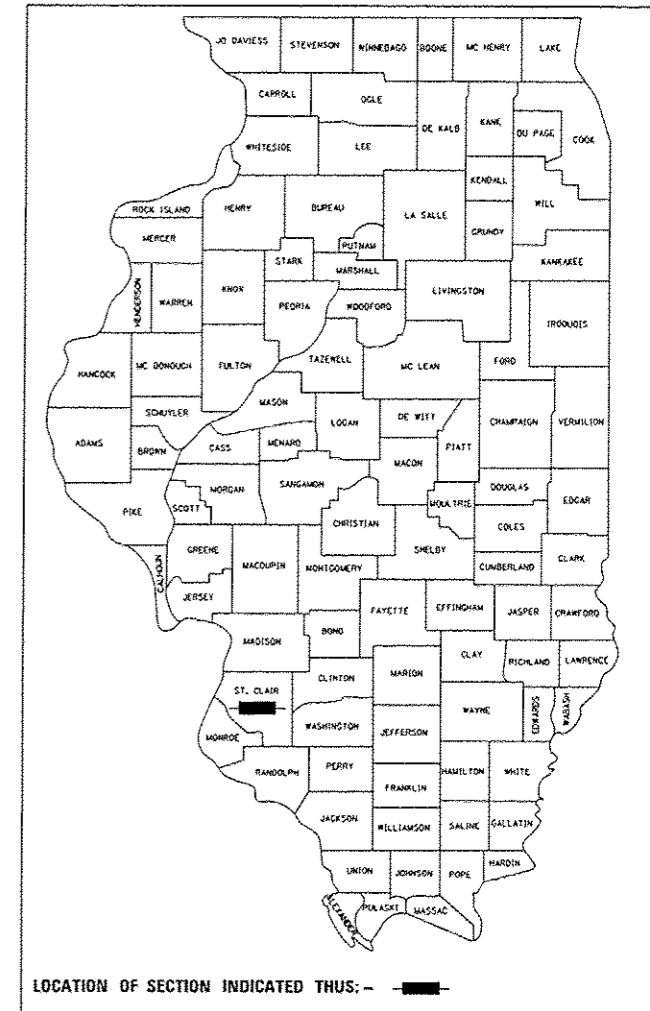
NORTH 89TH STREET (NORTH OF ST. CLAIR AVENUE)  
 FUNCTIONAL CLASSIFICATION: LOCAL STREET  
 2014 ADT: 550  
 MU %: N/A  
 SU %: N/A

APPROXIMATE SCALE:  
 1" = 4000'

LOCATION MAP  
 GROSS LENGTH = 10,522' (1.99 MILES)  
 NET LENGTH = 10,522' (1.99 MILES)

F.A.I. RTE.	SECTION	COUNTY	TOTAL SHEETS	SHEET NO.
VAR.		ST. CLAIR	19	1

DIST 8 RESURFACING 2014-5 D-98-048-14



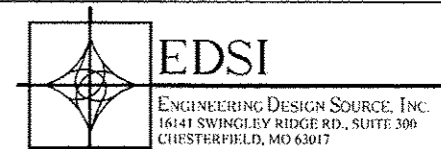
STATE OF ILLINOIS  
 DEPARTMENT OF TRANSPORTATION  
 DIVISION OF HIGHWAYS

SUBMITTED *April 11, 2014*  
*Jeffrey L. Kan*  
 DISTRICT ENGINEER

*May 9, 2014*  
*John D. Baranzoni, PE*  
 ENGINEER OF DESIGN AND ENVIRONMENT

*May 9, 2014*  
*Omer Osman, PE*  
 DIRECTOR, DIVISION OF HIGHWAYS

**PRINTED BY THE AUTHORITY  
 OF THE STATE OF ILLINOIS**



PLOT DATE: 4/11/2014 12:29:40 PM