

F.A.P. RTE.	SECTION	COUNTY	TOTAL SHEETS	SHEET NO.
VARIOUS	DIST 8 PATCHING 2014-3	WASHINGTON & RANDOLPH	6	1
		ILLINOIS	CONTRACT NO. 76H24	

**STATE OF ILLINOIS**  
**DEPARTMENT OF TRANSPORTATION**  
**DIVISION OF HIGHWAYS**

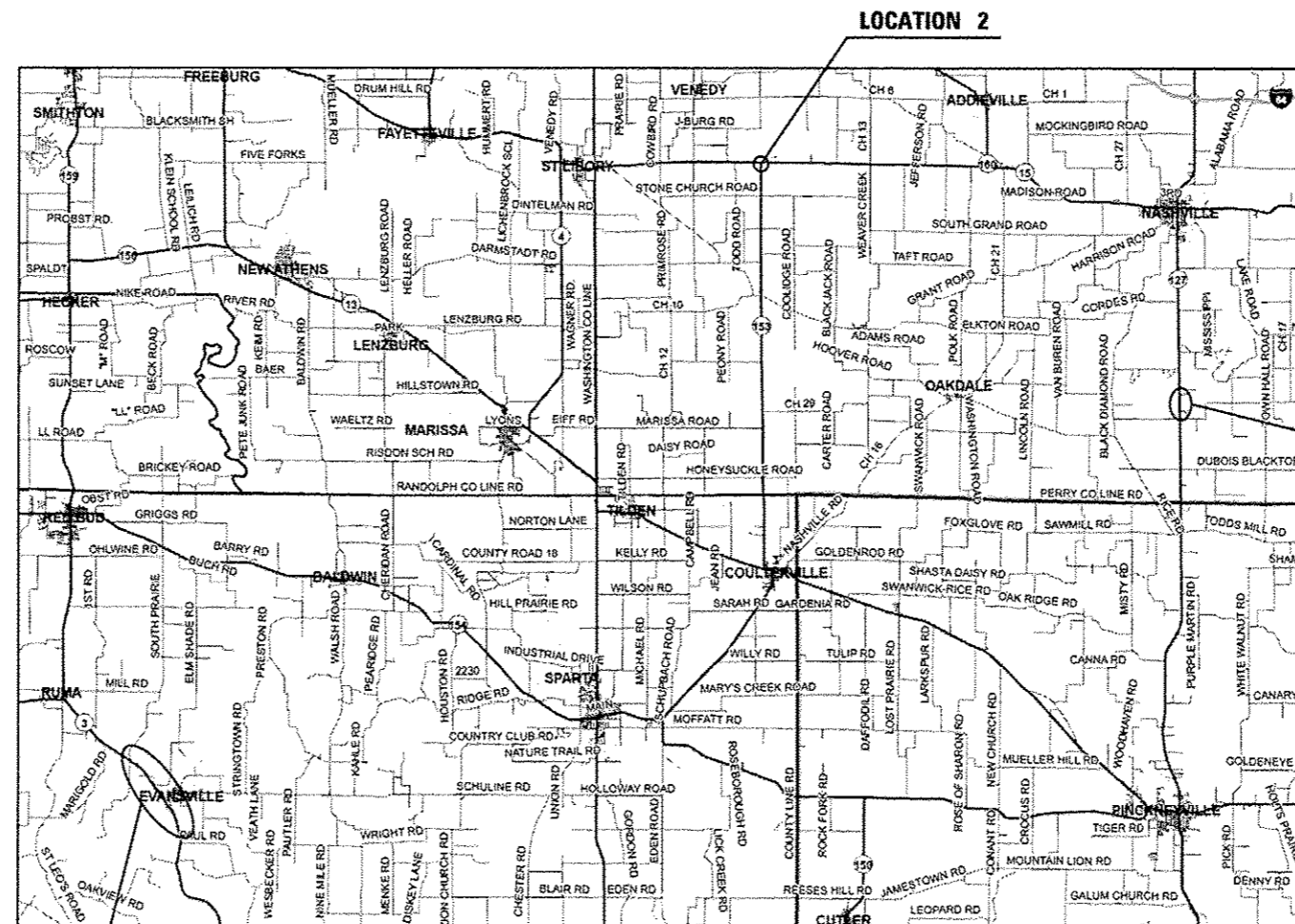
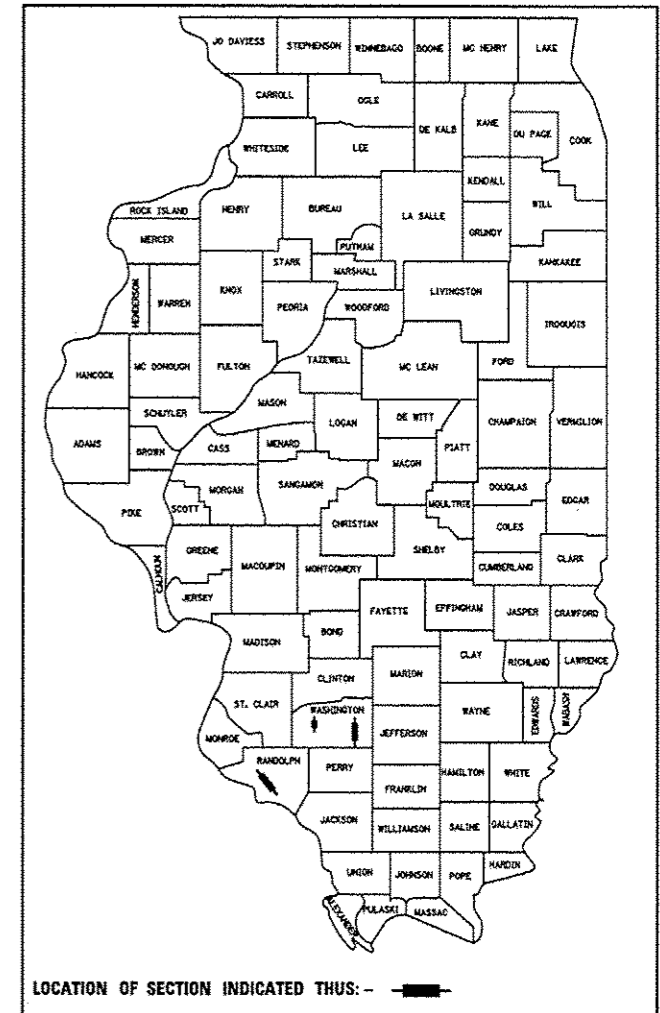
**PROPOSED**  
**HIGHWAY PLANS**

**VARIOUS ROUTES**  
**SECTION DIST 8 PATCHING 2014-3**  
**PATCHING**  
**WASHINGTON AND RANDOLPH COUNTIES**

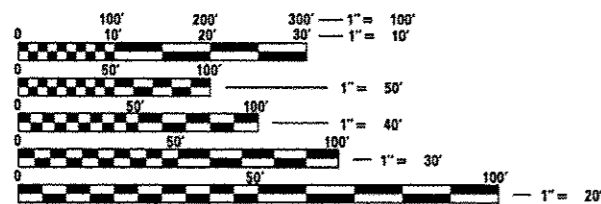
C-98-050-14

FOR INDEX OF SHEETS, SEE SHEET NO. 2

D-98-049-14



MAP NOT TO SCALE



FULL SIZE PLANS HAVE BEEN PREPARED USING STANDARD ENGINEERING SCALES. REDUCED SIZED PLANS WILL NOT CONFORM TO STANDARD SCALES. IN MAKING MEASUREMENTS ON REDUCED PLANS, THE ABOVE SCALES MAY BE USED.

J.U.L.I.E.  
 JOINT UTILITY LOCATION INFORMATION FOR EXCAVATION  
 1-800-892-0123  
 OR 811

PROJECT ENGINEER: PATTI LeBEAU (618)346-3179  
 PROJECT MANAGER: BILLIE OWEN (618)346-3209

CONTRACT NO. 76H24

DESIGN DESIGNATION  
 N/A

GROSS LENGTH = 17,952 FT. = 3.4 MILE  
 NET LENGTH = 17,952 FT. = 3.4 MILE

STATE OF ILLINOIS  
 DEPARTMENT OF TRANSPORTATION  
 DIVISION OF HIGHWAYS

SUBMITTED *April 14 2014*  
*John D. Baranzelli, PE*  
 DEPUTY DIRECTOR OF HIGHWAYS, REGION 5 ENGINEER

*May 9 2014*  
*John D. Baranzelli, PE*  
 acting ENGINEER OF DESIGN AND ENVIRONMENT

*May 9 2014*  
*Omer Osman, PE*  
 DIRECTOR OF HIGHWAYS, CHIEF ENGINEER

**PRINTED BY THE AUTHORITY**  
**OF THE STATE OF ILLINOIS**