

06-13-14 LETTING ITEM 147

STATE OF ILLINOIS
DEPARTMENT OF TRANSPORTATION
DIVISION OF HIGHWAYS

**PROPOSED
HIGHWAY PLANS**

FAP 103 & 674 (IL ROUTE 15 & 158)
SECTION 29-I-1, (31,410,410-1)I-1

PATCHING
ST. CLAIR COUNTY

C-98-052-14

F.A.P. RTE.	SECTION	COUNTY	TOTAL SHEETS	SHEET NO.
*	29-I-1, (31,410,410-1)I-1	ST. CLAIR	17	1
		ILLINOIS	CONTRACT NO. 76H25	

* FAP 103674

D-98-019-12



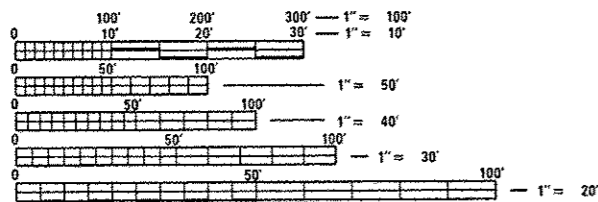
LOCATION OF SECTION INDICATED THUS: - [Symbol] -

FOR INDEX OF SHEETS, SEE SHEET NO. 2

BEGIN PROJECT:
LAT: 38.595860
LONG: -90.123079
0.4 MI W OF IL 163
MS 0.0

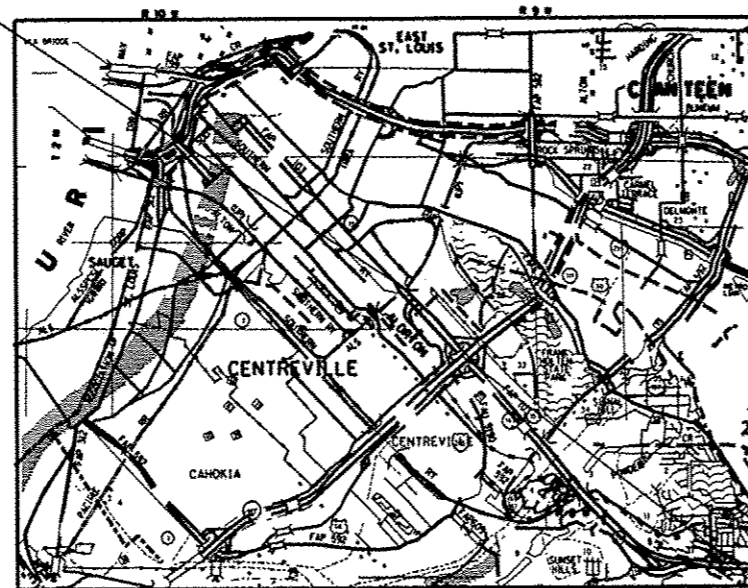
BEGIN PROJECT:
LAT: 38.573009
LONG: -89.876061
US 50 MS 0.0

END PROJECT:
LAT: 38.519380
LONG: -89.883161
IL 161 MS 4.0



FULL SIZE PLANS HAVE BEEN PREPARED USING STANDARD ENGINEERING SCALES. REDUCED SIZED PLANS WILL NOT CONFORM TO STANDARD SCALES. IN MAKING MEASUREMENTS ON REDUCED PLANS, THE ABOVE SCALES MAY BE USED.

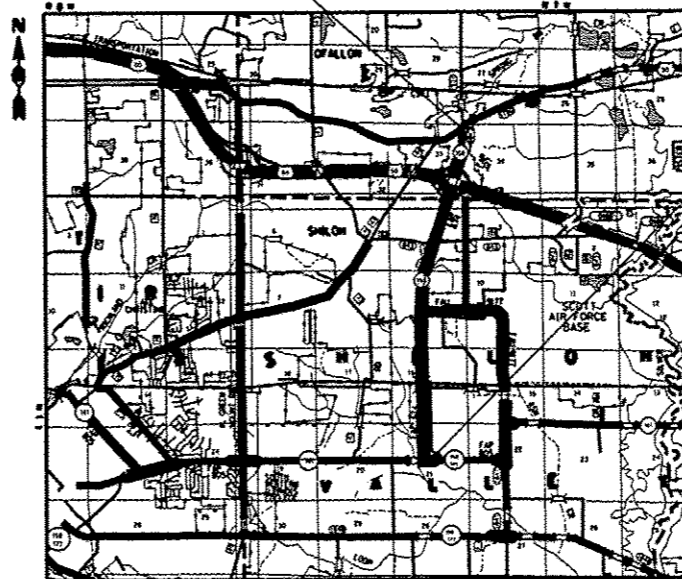
J.U.L.I.E.
JOINT UTILITY LOCATION INFORMATION FOR EXCAVATION
1-800-892-0123
OR 811



TOWNSHIPS: ST. CLAIR

ADT - IL 15

2014 = 18,400 (ACTUAL)
S.U. = 2.08%
M.U. = 2.04%



TOWNSHIPS: SHILOH VALLEY

ADT - IL 158

END PROJECT:
LAT: 38.577826
LONG: -90.102737
0.4 MI E OF I-255
MS 1.75

2014 = 19,600 (ACTUAL)
S.U. = 4.34%
M.U. = 2.5%

GROSS LENGTH = 30,360 FT. = 5.75 MILES
NET LENGTH = 24,816 FT. = 4.7 MILES

FUNCTIONAL CLASSIFICATION:
OTHER ARTERIAL

PROJECT ENGINEER: MIKE PRITCHETT (618)-346-3180
PROJECT MANAGER: GWEN LAGEMANN (618)-346-3181

CONTRACT NO. 76H25

STATE OF ILLINOIS
DEPARTMENT OF TRANSPORTATION
DIVISION OF HIGHWAYS

SUBMITTED *April 11, 2014*

John Z. Kain
DEPUTY DIRECTOR OF HIGHWAYS, REGION 5 ENGINEER

John D. Baranzelle, PE
ENGINEER OF DESIGN AND ENVIRONMENT

Omer Osman, PE
DIRECTOR OF HIGHWAYS, CHIEF ENGINEER

PRINTED BY THE AUTHORITY
OF THE STATE OF ILLINOIS

CODE NO.	ITEM	UNIT	TOTAL QUANTITY	CONSTRUCTION CODE	
				FAP 674 ROADWAY	FAP 103 ROADWAY
				0005 URBAN	0005 URBAN
44200561	CLASS A PATCHES, TYPE I, 11 INCH	SO YD	87		87
44200565	CLASS A PATCHES, TYPE II, 11 INCH	SO YD	405		405
44200569	CLASS A PATCHES, TYPE III, 11 INCH	SO YD	64		64
44200571	CLASS A PATCHES, TYPE IV, 11 INCH	SO YD	38		38
44200982	CLASS B PATCHES, TYPE II, 11 INCH	SO YD	120	92	28
44200986	CLASS B PATCHES, TYPE III, 11 INCH	SO YD	409	41	368
44200988	CLASS B PATCHES, TYPE IV, 11 INCH	SO YD	621	621	
44201035	CLASS B PATCHES, TYPE III, 15 INCH	SO YD	294		294
44201037	CLASS B PATCHES, TYPE IV, 15 INCH	SO YD	46		46
44201299	DOWEL BARS 1 1/2"	EACH	1311	391	920
44213000	PATCHING REINFORCEMENT	SO YD	595		595
44213100	PAVEMENT FABRIC	SO YD	1389	662	727
44213200	SAW CUTS	FOOT	8798	1750	7048
44213204	TIE BARS 3/4"	EACH	274	176	98

14

CODE NO.	ITEM	UNIT	TOTAL QUANTITY	CONSTRUCTION CODE	
				FAP 674 ROADWAY	FAP 103 ROADWAY
				0005 URBAN	0005 URBAN
67100100	MOBILIZATION	L SUM	1	0.5	0.5
70100310	TRAFFIC CONTROL AND PROTECTION, STANDARD 701421	L SUM	1	0.5	0.5
70100320	TRAFFIC CONTROL AND PROTECTION, STANDARD 701422	L SUM	1	0.5	0.5
70100420	TRAFFIC CONTROL AND PROTECTION, STANDARD 701411	EACH	8	4	4
70100815	TRAFFIC CONTROL AND PROTECTION, STANDARD 701446	L SUM	1		1
70102635	TRAFFIC CONTROL AND PROTECTION, STANDARD 701701	L SUM	1	.5	.5
* 78000200	THERMOPLASTIC PAVEMENT MARKING - LINE 4"	FOOT	543	543	
* 78001110	PAINT PAVEMENT MARKING - LINE 4"	FOOT	5351	4239	1112
* 78100100	RAISED REFLECTIVE PAVEMENT MARKER	EACH	211	106	105
X4405020	LONGITUDINAL PARTIAL DEPTH REMOVAL 2"	FOOT	1549	1549	
X4406020	PARTIAL DEPTH REMOVAL, TYPE I, 2"	SQ YD	87	87	
X4406220	PARTIAL DEPTH REMOVAL, TYPE II, 2"	SQ YD	640	640	
X4406420	PARTIAL DEPTH REMOVAL, TYPE III, 2"	SQ YD	69	69	
X4406620	PARTIAL DEPTH REMOVAL, TYPE IV, 2"	SQ YD	529	529	

* SPECIALTY ITEM

* FAP 103674

FILE NAME =	USER NAME = jagenanng	DESIGNED -	REVISED -	STATE OF ILLINOIS DEPARTMENT OF TRANSPORTATION	SUMMARY OF QUANTITIES			F.A.P. RTE.	SECTION	COUNTY	TOTAL SHEETS	SHEET NO.
or:\pwork\pndot\jagenanng\d0388136\076425\alt-plan.dgn		DRAWN -	REVISED -					+	29-1-1, 131,410,410-111-1	ST. CLAIR	17	5
	PLOT SCALE = 100.0000' / in.	CHECKED -	REVISED -		SCALE:	SHEET NO. OF SHEETS	STA. TO STA.	CONTRACT NO. 76H25				
	PLOT DATE = 4/15/2014	DATE -	REVISED -		FED. ROAD DIST. NO. ILLINOIS FED. AID PROJECT							

10341

CODE NO.	ITEM	UNIT	TOTAL QUANTITY	CONSTRUCTION CODE	
				FAP 674 ROADWAY	FAP 103 ROADWAY
				0005 URBAN	0005 URBAN
X4420900	LONGITUDINAL PARTIAL DEPTH PATCHING	TON	39	39	
φ 20076604	TRAINEES TRAINING PROGRAM GRADUATE	HOOR	500	500	
X4421000	PARTIAL DEPTH PATCHING	TON	150	150	

9

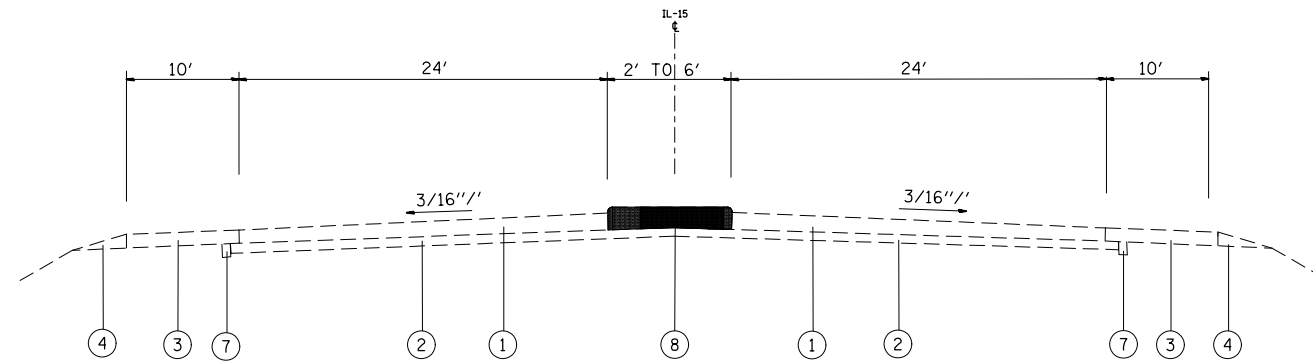
φ 0042

FILE NAME = c:\pwwork\pwwork\jagennge\d0308109\076H25-ent-plan.dgn				USER NAME = jagennge				DESIGNED - DRAWN -		REVISED - REVISED -		STATE OF ILLINOIS DEPARTMENT OF TRANSPORTATION				SUMMARY OF QUANTITIES				F.A.P. RTE. *	SECTION 29-J-1, (31,410,410-1)1-1	COUNTY ST. CLAIR	TOTAL SHEETS 17	SHEET NO. 6					
PLOT SCALE = 100.0000' / 1"				CHECKED - DATE -				REVISED - REVISED -												SCALE:		SHEET NO. OF SHEETS		STA. TO STA.		FED. ROAD DIST. NO. ILLINOIS FED. AID PROJECT		CONTRACT NO. 76H25	
PLOT DATE = 4/15/2014				CHECKED - DATE -				REVISED - REVISED -												SCALE:		SHEET NO. OF SHEETS		STA. TO STA.		FED. ROAD DIST. NO. ILLINOIS FED. AID PROJECT		CONTRACT NO. 76H25	

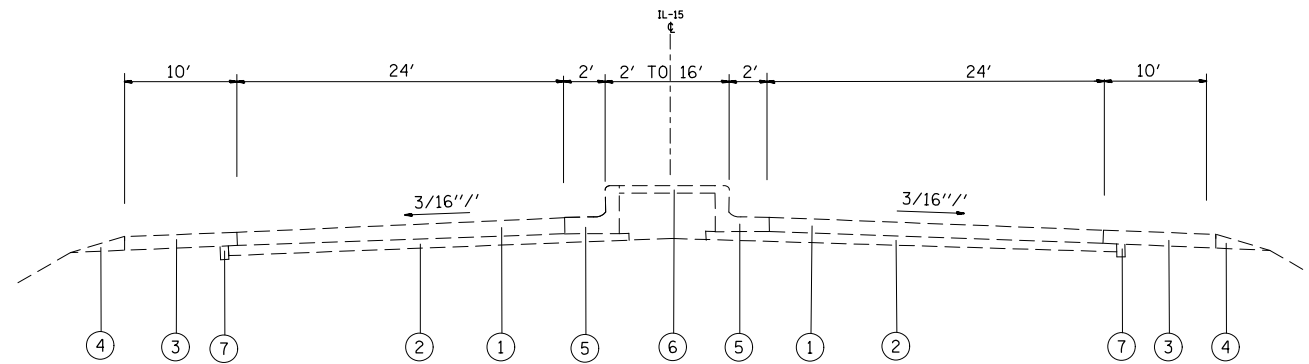
* FAP 103674

LEGEND

- ① EXISTING CONTINUOUS REINFORCED PCC PAVEMENT, 9"
- ② EXISTING STABILIZED SUB-BASE, 4"
- ③ EXISTING HMA SHOULDER, 9"
- ④ EXISTING AGGREGATE SHOULDER, TYPE B
- ⑤ EXISTING COMBINATION CONCRETE CURB AND GUTTER, TYPE B-9, 24
- ⑥ EXISTING CONCRETE MEDIAN SURFACE, 4"
- ⑦ EXISTING PIPE UNDERDRAIN, 4"
- ⑧ EXISTING CONCRETE MEDIAN, TYPE C-4
- ⑨ EXISTING PCC BASE COURSE, 13"
- ⑩ EXISTING HMA SURFACE COURSE, MIX D, CLASS I 1 1/2"
- ⑪ EXISTING CONCRETE BARRIER
- ⑫ EXISTING PCC BASE COURSE 9"



EXISTING TYPICAL IL ROUTE 15
MILE MARKER 0.0 TO MILE MARKER 0.1



EXISTING TYPICAL IL ROUTE 15
MILE MARKER 0.1 TO MILE MARKER 0.3

* FAP 103674

FILE NAME =	USER NAME = lagemannge	DESIGNED -	REVISED -
et:\pwork\pwork\lagemannge\d0388138\0876H25-sht-plan.dgn		DRAWN -	REVISED -
	PLOT SCALE = 100.0000' / in.	CHECKED -	REVISED -
	PLOT DATE = 4/15/2014	DATE -	REVISED -

STATE OF ILLINOIS
DEPARTMENT OF TRANSPORTATION

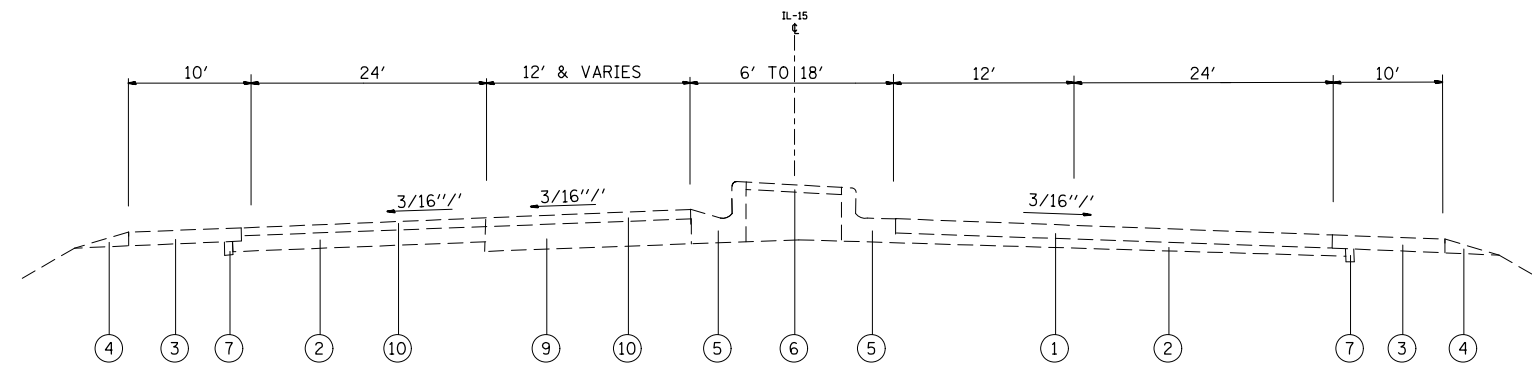
EXISTING TYPICAL SECTIONS

SCALE: SHEET NO. 1 OF 13 SHEETS STA. TO STA.

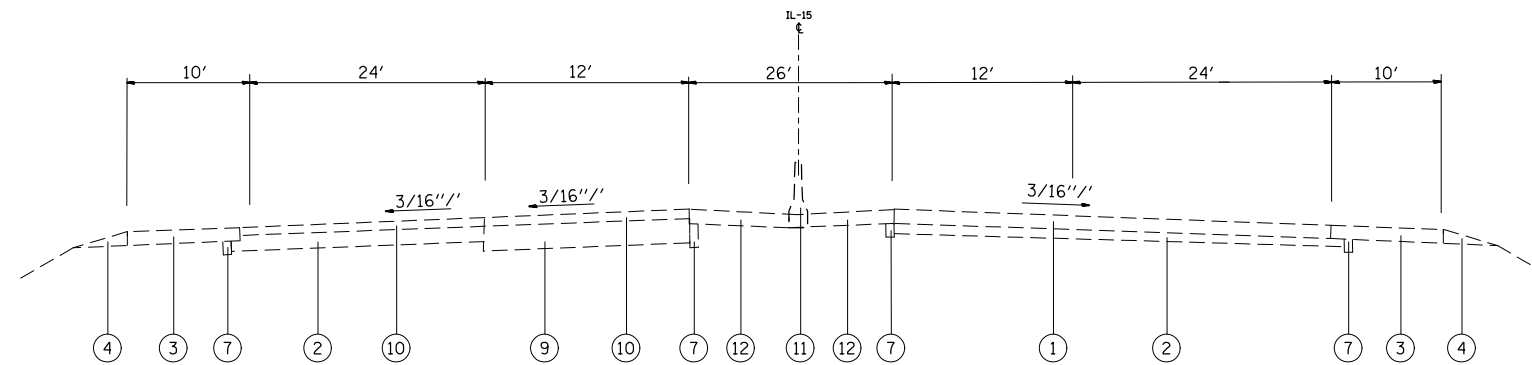
F.A.P. RTE.	SECTION	COUNTY	TOTAL SHEETS	SHEET NO.
•	29-I-1, (31,410,410-1)-1	ST. CLAIR	17	7
CONTRACT NO. 76H25				
FED. ROAD DIST. NO.	ILLINOIS	FED. AID PROJECT		

LEGEND

- ① EXISTING CONTINUOUS REINFORCED PCC PAVEMENT, 9"
- ② EXISTING STABILIZED SUB-BASE, 4"
- ③ EXISTING HMA SHOULDER, 9"
- ④ EXISTING AGGREGATE SHOULDER, TYPE B
- ⑤ EXISTING COMBINATION CONCRETE CURB AND GUTTER, TYPE B-9, 24
- ⑥ EXISTING CONCRETE MEDIAN SURFACE, 4"
- ⑦ EXISTING PIPE UNDERDRAIN, 4"
- ⑧ EXISTING CONCRETE MEDIAN, TYPE C-4
- ⑨ EXISTING PCC BASE COURSE, 13"
- ⑩ EXISTING HMA SURFACE COURSE, MIX D, CLASS I 1 1/2"
- ⑪ EXISTING CONCRETE BARRIER
- ⑫ EXISTING PCC BASE COURSE 9"



EXISTING TYPICAL IL ROUTE 15
MILE MARKER 0.3 TO MILE MARKER 0.6



EXISTING TYPICAL IL ROUTE 15
MILE MARKER 0.6 TO MILE MARKER 1.8

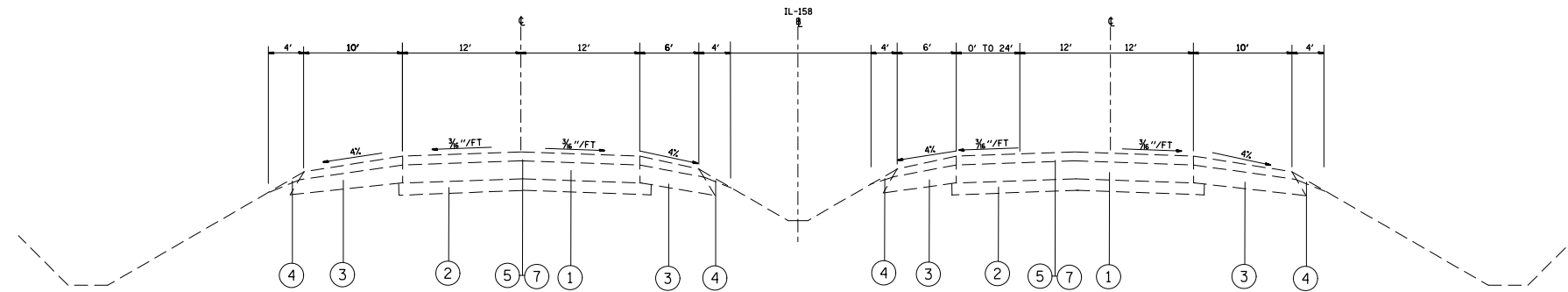
FILE NAME =	USER NAME = lagemannge	DESIGNED -	REVISED -
ct:\pwork\pwork\lagemannge\d0388138\0876H25-sht-plan.dgn		DRAWN -	REVISED -
	PLOT SCALE = 100.0000' / in.	CHECKED -	REVISED -
	PLOT DATE = 4/15/2014	DATE -	REVISED -

**STATE OF ILLINOIS
DEPARTMENT OF TRANSPORTATION**

EXISTING TYPICAL SECTIONS

SCALE: SHEET NO. OF SHEETS STA. TO STA.

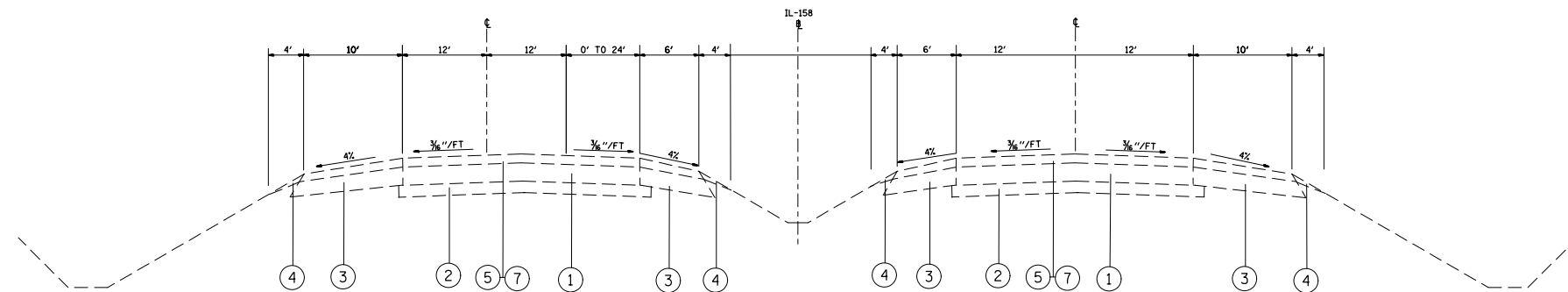
F.A.P. RTE.	SECTION	COUNTY	TOTAL SHEETS	SHEET NO.
•	29-1-1, (31,410,410-1)-1	ST. CLAIR	17	8
			CONTRACT NO. 76H25	
FED. ROAD DIST. NO.		ILLINOIS FED. AID PROJECT		



EXISTING TYPICAL IL ROUTE 158
 MILE MARKER 1.0 TO MILE MARKER 1.1
 MILE MARKER 1.8 TO MILE MARKER 1.9
 MILE MARKER 3.8 TO MILE MARKER 4.0

LEGEND

- ① EXISTING PCC PAVEMENT, 8"
- ② EXISTING STABILIZED SUB-BASE, 4"
- ③ EXISTING HMA SHOULDER, 9"
- ④ EXISTING AGGREGATE SHOULDER, TYPE B
- ⑤ EXISTING HMA SURFACE COURSE, 1 1/2"
- ⑥ EXISTING COMBINATION CONCRETE CURB AND GUTTER
- ⑦ EXISTING LEVEL BINDER, 1"



EXISTING TYPICAL IL ROUTE 158
 MILE MARKER 1.2 TO MILE MARKER 1.3
 MILE MARKER 2.1 TO MILE MARKER 2.2

* FAP 103674

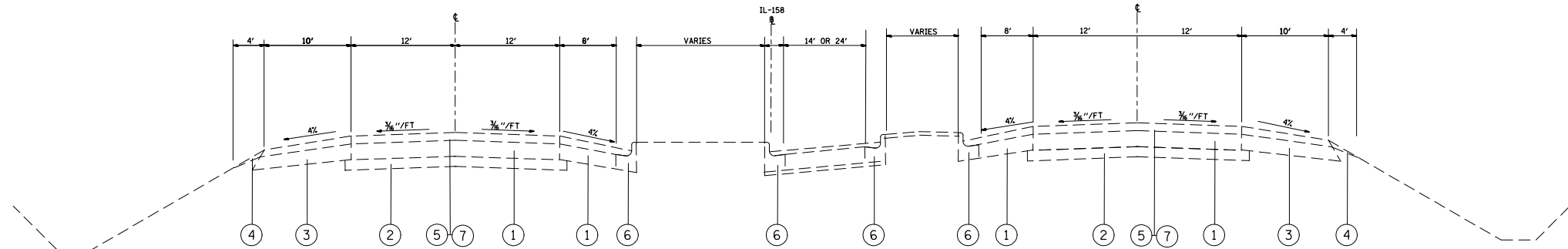
FILE NAME =	USER NAME = lagemannge	DESIGNED -	REVISED -
et:\pw\work\p\dot\lagemannge\10388138\0876H25-sht-plan.dgn		DRAWN -	REVISED -
	PLOT SCALE = 100.0000' / 1in.	CHECKED -	REVISED -
	PLOT DATE = 4/15/2014	DATE -	REVISED -

**STATE OF ILLINOIS
 DEPARTMENT OF TRANSPORTATION**

TYPICAL SECTIONS

SCALE: SHEET NO. OF SHEETS STA. TO STA.

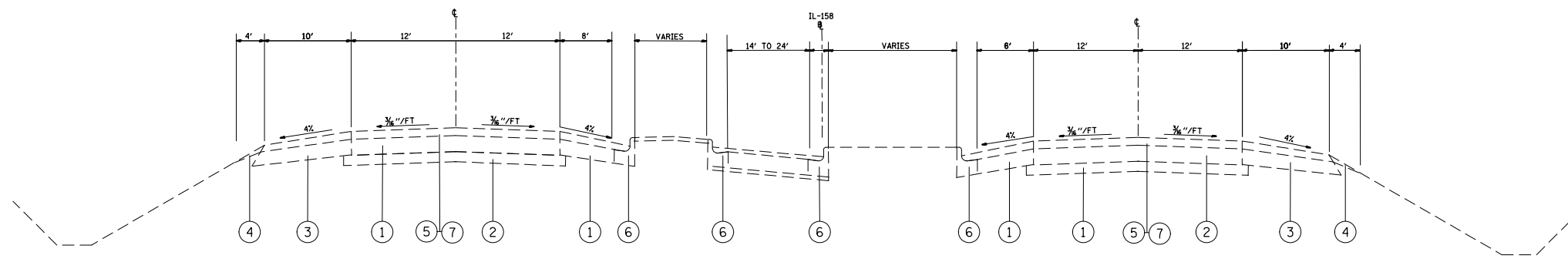
F.A. RTE.	SECTION	COUNTY	TOTAL SHEETS	SHEET NO.
•	29-1-1, (31,410,410-1)I-1	ST. CLAIR	17	9
			CONTRACT NO. 76H25	
FED. ROAD DIST. NO.		ILLINOIS FED. AID PROJECT		



EXISTING TYPICAL IL ROUTE 158
 MILE MARKER 1.1 TO MILE MARKER 1.2
 MILE MARKER 1.9 TO MILE MARKER 2.0

LEGEND

- ① EXISTING PCC PAVEMENT, 8"
- ② EXISTING STABILIZED SUB-BASE, 4"
- ③ EXISTING HMA SHOULDER, 9"
- ④ EXISTING AGGREGATE SHOULDER, TYPE B
- ⑤ EXISTING HMA SURFACE COURSE, 1 1/2"
- ⑥ EXISTING COMBINATION CONCRETE CURB AND GUTTER
- ⑦ EXISTING LEVEL BINDER, 1"



EXISTING TYPICAL IL ROUTE 158
 MILE MARKER 1.1 TO MILE MARKER 1.2
 MILE MARKER 2.0 TO MILE MARKER 2.1

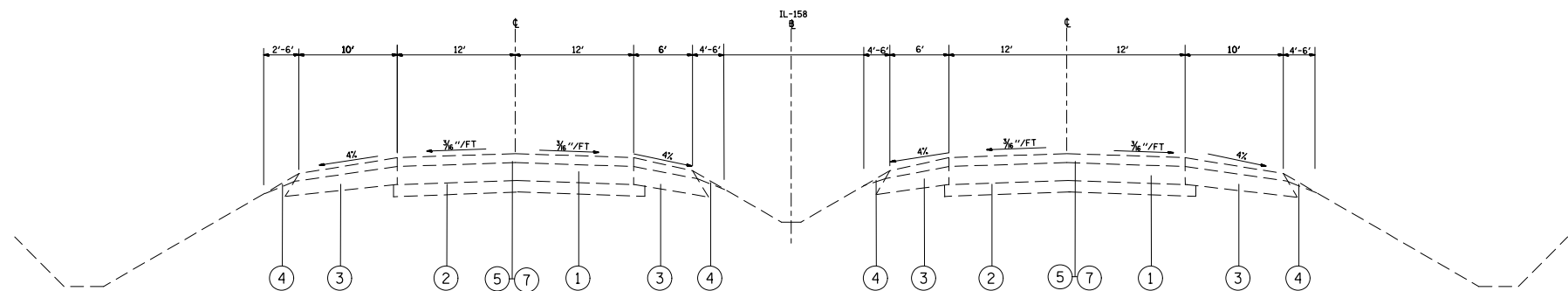
FILE NAME =	USER NAME = lagemannge	DESIGNED -	REVISED -
c:\pwork\pwork\lagemannge\d0388138\0876H25-sht-plan.dgn		DRAWN -	REVISED -
PLOT SCALE = 100.0000' / 1in.		CHECKED -	REVISED -
PLOT DATE = 4/15/2014		DATE -	REVISED -

**STATE OF ILLINOIS
 DEPARTMENT OF TRANSPORTATION**

TYPICAL SECTIONS

SCALE: SHEET NO. OF SHEETS STA. TO STA.

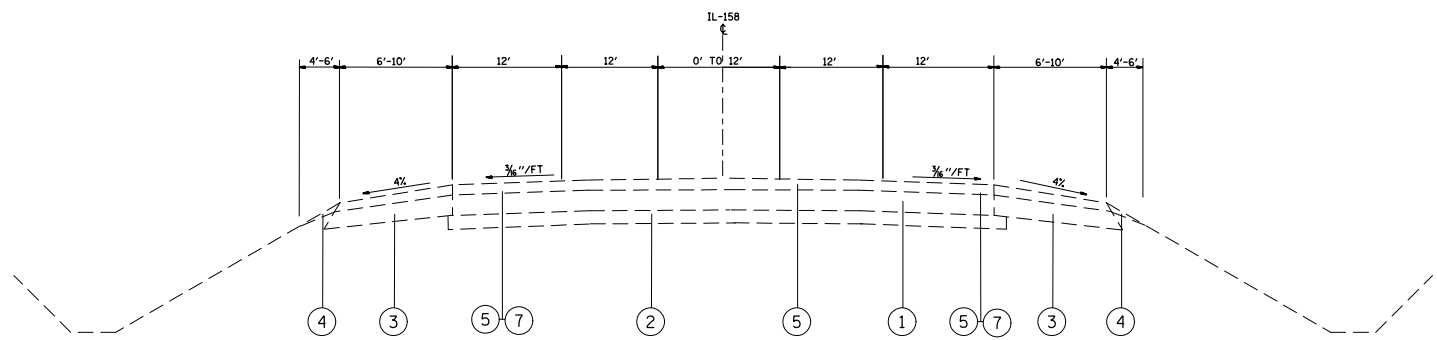
F.A. RTE.	SECTION	COUNTY	TOTAL SHEETS	SHEET NO.
•	29-1-1, (31,410,410-1)1-1	ST. CLAIR	17	10
			CONTRACT NO. 76H25	
FED. ROAD DIST. NO.		ILLINOIS FED. AID PROJECT		



EXISTING TYPICAL IL ROUTE 158
 MILE MARKER 0.3 TO MILE MARKER 1
 MILE MARKER 1.3 TO MILE MARKER 1.8
 MILE MARKER 2.2 TO MILE MARKER 3.8

LEGEND

- ① EXISTING PCC PAVEMENT, 8"
- ② EXISTING STABILIZED SUB-BASE, 4"
- ③ EXISTING HMA SHOULDER, 9"
- ④ EXISTING AGGREGATE SHOULDER, TYPE B
- ⑤ EXISTING HMA SURFACE COURSE, 1 1/2"
- ⑥ EXISTING COMBINATION CONCRETE CURB AND GUTTER
- ⑦ EXISTING LEVEL BINDER, 1"



EXISTING TYPICAL IL ROUTE 158
 MILE MARKER 0.0 TO MILE MARKER 0.3

* FAP 103674

FILE NAME =	USER NAME = lagemannge	DESIGNED -	REVISED -
et:\pwork\pwork\lagemannge\10388138\0376H25-sht-plan.dgn		DRAWN -	REVISED -
	PLOT SCALE = 100.0000' / in.	CHECKED -	REVISED -
	PLOT DATE = 4/15/2014	DATE -	REVISED -

**STATE OF ILLINOIS
 DEPARTMENT OF TRANSPORTATION**

TYPICAL SECTIONS

SCALE: SHEET NO. OF SHEETS STA. TO STA.

F.A. RTE.	SECTION	COUNTY	TOTAL SHEETS	SHEET NO.
*	29-1-1, (31,410,410-1)I-1	ST. CLAIR	17	11
			CONTRACT NO. 76H25	
FED. ROAD DIST. NO.		ILLINOIS FED. AID PROJECT		

IL-15 CLASS A PAVEMENT PATCHING SCHEDULE EASTBOUND												
PATCH #	MILE	SHOULDER TYPE	LANE	LENGTH (FT)	LANE WIDTH (FT)	CLASS A PATCH TYPE I	CLASS A PATCH TYPE II	CLASS A PATCH TYPE III	CLASS A PATCH TYPE IV	TIE BARS	PATCHING REINFORCEMENT	SAWCUT
						11 " (SQ YD)	11 " (SQ YD)	11 " (SQ YD)	11 " (SQ YD)	(EACH)	(SQ YD)	(FT)
1	0.000	HMA	1	12.00	6.00		8.00				8.00	48.00
2	0.000	CONCRETE	2	12.00	6.00		8.00				8.00	60.00
3	0.030	HMA	1	30.00	6.00			20.00		14	20.00	84.00
4	0.050	HMA	1	12.00	6.00		8.00				8.00	48.00
5	0.050	CONCRETE	2	12.00	6.00		8.00				8.00	60.00
6	0.100	HMA	1	12.00	6.00		8.00				8.00	48.00
7	0.100	CONCRETE	2	12.00	6.00		8.00				8.00	60.00
8	0.140	HMA	1	12.00	6.00		8.00				8.00	48.00
9	0.140	CONCRETE	2	12.00	6.00		8.00				8.00	60.00
10	0.200	CONCRETE	2	12.00	6.00		8.00				8.00	60.00
11	0.220	HMA	1	12.00	6.00		8.00				8.00	48.00
12	0.220	CONCRETE	2	12.00	6.00		8.00				8.00	60.00
13	0.240	HMA	1	8.00	6.00		5.33				5.33	40.00
14	0.240	CONCRETE	2	8.00	6.00		5.33				5.33	48.00
15	0.260	CONCRETE	2	50.00	6.00				33.33	24	33.33	174.00
16	0.300	HMA	1	12.00	6.00		8.00				8.00	48.00
17	0.300	HMA	3	12.00	6.00		8.00				8.00	48.00
18	0.340	HMA	1	12.00	6.00		8.00				8.00	48.00
19	0.340	CONCRETE	2	12.00	6.00		8.00				8.00	60.00
20	0.340	HMA	3	12.00	6.00		8.00				8.00	48.00
21	0.400	CONCRETE	2	8.00	6.00		5.33				5.33	48.00
22	0.500	CONCRETE	2	6.00	6.00	4.00					4.00	42.00
23	0.600	HMA	1	12.00	10.00		13.33				13.33	64.00
24	0.600	CONCRETE	2	12.00	8.00		10.67				10.67	68.00
25	0.600	HMA	3	6.00	6.00	4.00					4.00	36.00
26	0.620	CONCRETE	2	12.00	6.00		8.00				8.00	60.00
27	0.630	CONCRETE	2	6.00	6.00	4.00					4.00	42.00
28	0.640	CONCRETE	2	30.00	6.00			20.00		14	20.00	114.00
29	0.670	CONCRETE	2	6.00	6.00	4.00					4.00	42.00
30	0.700	CONCRETE	2	12.00	8.00		10.67				10.67	68.00
31	0.700	HMA	3	12.00	6.00		8.00				8.00	48.00
32	0.800	CONCRETE	2	6.00	6.00	4.00					4.00	42.00
33	1.000	HMA	1	12.00	6.00		8.00				8.00	42.00
34	1.000	CONCRETE	2	6.00	6.00	4.00					4.00	42.00
35	1.050	CONCRETE	2	20.00	6.00		13.33			9	13.33	84.00
36	1.100	CONCRETE	2	6.00	6.00	4.00					4.00	42.00
37	1.200	CONCRETE	2	6.00	6.00	4.00					4.00	42.00
38	1.300	CONCRETE	2	12.00	6.00		8.00				8.00	60.00
39	1.310	CONCRETE	2	20.00	6.00		13.33			9	13.33	84.00
40	1.320	CONCRETE	2	6.00	6.00	4.00					4.00	42.00
41	1.330	CONCRETE	2	6.00	6.00	4.00					4.00	42.00
42	1.350	CONCRETE	2	6.00	6.00	4.00					4.00	42.00
43	1.370	CONCRETE	2	12.00	6.00		8.00				8.00	60.00
44	1.400	CONCRETE	2	6.00	6.00	4.00					4.00	42.00
45	1.450	CONCRETE	2	12.00	6.00		8.00				8.00	60.00
46	1.450	HMA	3	12.00	6.00		8.00				8.00	48.00
47	1.500	CONCRETE	2	6.00	6.00	4.00					4.00	42.00
48	1.500	HMA	3	10.00	6.00		6.67				6.67	44.00
49	1.510	CONCRETE	2	10.00	6.00		6.67				6.67	54.00
50	1.520	CONCRETE	2	12.00	6.00		8.00				8.00	60.00
51	1.530	CONCRETE	2	6.00	6.00	4.00					4.00	42.00
52	1.540	CONCRETE	2	6.00	6.00	4.00					4.00	42.00
53	1.550	CONCRETE	2	6.00	6.00	4.00					4.00	42.00
54	1.550	HMA	3	6.00	6.00	4.00					4.00	36.00
55	1.580	CONCRETE	2	6.00	6.00	4.00					4.00	42.00
56	1.590	CONCRETE	2	12.00	8.00		10.67				10.67	68.00
57	1.600	CONCRETE	2	6.00	6.00	4.00					4.00	42.00
58	1.630	HMA	1	12.00	6.00		8.00				8.00	48.00
59	1.630	CONCRETE	2	12.00	6.00		8.00				8.00	60.00
60	1.630	HMA	3	12.00	6.00		8.00				8.00	48.00
61	1.650	CONCRETE	2	12.00	6.00		8.00				8.00	60.00
62	1.650	HMA	3	12.00	6.00		8.00				8.00	48.00
63	1.670	HMA	1	12.00	12.00			16.00			16.00	72.00
64	1.670	CONCRETE	2	12.00	6.00		8.00				8.00	60.00
65	1.670	HMA	3	8.00	12.00		10.67				10.67	64.00
SUBTOTAL:						76.00	352.00	56.00	33.33	70	517.33	3578.00
ANTICIPATED FAILURES (15%):						11.40	52.80	8.40	5.00	11	77.60	536.70
TOTAL:						87.40	404.80	64.40	38.33	81	594.93	4114.70

NOTE: LANE 1 = LEFT LANE
LANE 2 = MIDDLE LANE
LANE 3 = RIGHT LANE

* FAP 103674

FILE NAME =	USER NAME = lagemange	DESIGNED -	REVISED -	STATE OF ILLINOIS DEPARTMENT OF TRANSPORTATION			SCHEDULE OF QUANTITIES			F.A.P. RTE.	SECTION	COUNTY	TOTAL SHEETS	SHEET NO.
c:\pw\work\p1dot\lagemange\l0388138\l0376h25-sht-plan.dgn	DRAWN -	REVISED -	*							29-I-1, (31,410,410-1)I-1	ST.CLAIR	17	12	
PLOT SCALE = 100.0000' / IN.	CHECKED -	REVISED -	CONTRACT NO. 76H25											
PLOT DATE = 4/15/2014	DATE -	REVISED -	SCALE:	SHEET NO.	OF SHEETS	STA.	TO STA.	FED. ROAD DIST. NO.	ILLINOIS	FED. AID PROJECT				

IL-15 CLASS B PAVEMENT PATCHING SCHEDULE WESTBOUND

PATCH #	MILE	SHOULDER TYPE	LANE	LENGTH (FT)	LANE WIDTH (FT)	CLASS B PATCH TYPE II 11 " (SQ YD)	CLASS B PATCH TYPE III 11 " (SQ YD)	CLASS B PATCH TYPE III 15 " (SQ YD)	CLASS B PATCH TYPE IV 15 " (SQ YD)	DOWEL BARS 1 1/2 INCH (EACH)	TIE BARS (EACH)	PAVEMENT FABRIC (SQ YD)	SAWCUT (FT)
66	1.650	HMA	3	6.00	12.00	8.00				20			48.00
67	0.750	HMA	1	12.00	12.00		16.00			20		16.00	60.00
68	0.700	HMA	1	12.00	12.00		16.00			20		16.00	60.00
69	0.650	HMA	1	12.00	12.00		16.00			20		16.00	60.00
70	0.620	CONCRETE	2	12.00	12.00		16.00			20		16.00	72.00
71	0.620	HMA	3	6.00	12.00	8.00				20			48.00
72	0.600	HMA	1	12.00	12.00			16.00		20		16.00	60.00
73	0.600	CONCRETE	2	12.00	12.00		16.00			20		16.00	72.00
74	0.600	HMA	3	12.00	12.00		16.00			20		16.00	60.00
75	0.580	HMA	1	12.00	12.00			16.00		20		16.00	60.00
76	0.580	CONCRETE	2	12.00	12.00		16.00			20		16.00	72.00
77	0.580	HMA	3	12.00	12.00		16.00			20		16.00	60.00
78	0.550	HMA	1	12.00	12.00			16.00		20		16.00	60.00
79	0.540	CONCRETE	2	12.00	12.00		16.00			20		16.00	72.00
80	0.530	HMA	1	12.00	12.00			16.00		20		16.00	60.00
81	0.520	HMA	1	12.00	12.00			16.00		20		16.00	60.00
82	0.520	CONCRETE	2	12.00	12.00		16.00			20		16.00	72.00
83	0.510	HMA	1	12.00	12.00			16.00		20		16.00	60.00
84	0.500	HMA	1	12.00	12.00			16.00		20		16.00	60.00
85	0.490	HMA	1	12.00	12.00			16.00		20		16.00	60.00
86	0.480	HMA	1	12.00	12.00			16.00		20		16.00	60.00
87	0.470	CONCRETE	2	12.00	12.00		16.00			20		16.00	72.00
88	0.450	HMA	3	12.00	12.00		16.00			20		16.00	60.00
89	0.430	CONCRETE	2	12.00	12.00		16.00			20		16.00	72.00
90	0.430	HMA	3	12.00	12.00		16.00			20		16.00	60.00
91	0.410	HMA	1	12.00	12.00			16.00		20		16.00	60.00
92	0.410	CONCRETE	2	12.00	12.00		16.00			20		32.00	72.00
93	0.390	HMA	1	30.00	12.00				40.00	20	14	40.00	96.00
94	0.390	HMA	3	12.00	12.00		16.00			20		16.00	60.00
95	0.350	CONCRETE	2	6.00	12.00	8.00				20			54.00
96	0.300	HMA	1	12.00	12.00			16.00		20		16.00	60.00
97	0.300	CONCRETE	2	12.00	12.00		16.00			20		16.00	72.00
98	0.150	HMA	1	12.00	12.00			16.00		20		16.00	60.00
99	0.150	CONCRETE	2	12.00	12.00		16.00			20		16.00	72.00
100	0.120	HMA	1	12.00	12.00			16.00		20		16.00	60.00
101	0.100	HMA	1	12.00	12.00			16.00		20		16.00	60.00
102	0.050	HMA	1	12.00	12.00			16.00		20		16.00	60.00
103	0.050	CONCRETE	2	12.00	12.00		16.00			20		16.00	72.00
104	0.000	HMA	1	12.00	12.00			16.00		20		16.00	60.00
105	0.000	CONCRETE	2	12.00	12.00		16.00			20		16.00	72.00
SUBTOTAL:						24.00	320.00	256.00	40.00	800	14	632.00	2550.00
ANTICIPATED FAILURES (15%):						3.60	48.00	38.40	6.00	120	3	94.80	382.50
TOTAL:						27.60	368.00	294.40	46.00	920.00	17.00	726.80	2932.50

NOTE: LANE 1 = LEFT LANE
 LANE 2 = MIDDLE LANE
 LANE 3 = RIGHT LANE

* FAP 103674

FILE NAME =	USER NAME = lagemannge	DESIGNED -	REVISED -	STATE OF ILLINOIS DEPARTMENT OF TRANSPORTATION	SCHEDULE OF QUANTITIES			F.A.P. RTE.	SECTION	COUNTY	TOTAL SHEETS	SHEET NO.
et:\pw\work\p\dot\lagemannge\10388138\0876H25-sht-plan.dgn	DRAWN -	REVISED -	*					29-I-1, (31,410,410-1)I-1	ST. CLAIR	17	13	
	PLOT SCALE = 100.0000' / 1in.	CHECKED -	REVISED -		SCALE:			SHEET NO. OF SHEETS	STA. TO STA.	CONTRACT NO. 76H25		
	PLOT DATE = 4/15/2014	DATE -	REVISED -		FED. ROAD DIST. NO. ILLINOIS FED. AID PROJECT							

IL-158 PAVEMENT PATCHING SCHEDULE							PARTIAL DEPTH REMOVAL TYPE I, 2"	PARTIAL DEPTH REMOVAL TYPE II, 2"	PARTIAL DEPTH REMOVAL TYPE III, 2"	PARTIAL DEPTH REMOVAL TYPE IV, 2"	PARTIAL DEPTH PATCHING	LONGITUDINAL PARTIAL DEPTH REMOVAL, 2"	LONGITUDINAL PARTIAL DEPTH PATCHING, 2"	CLASS B PATCH TYPE II, 11"	CLASS B PATCH TYPE III, 11"	CLASS B PATCH TYPE IV, 11"	DOWEL BARS 1 1/2 INCH	TIE BARS 3/4"	PAVEMENT FABRIC	SAW CUTS	
PATCH #	MILE MARKER	SHOULDER TYPE	LANE	LENGTH (FT)	LANE WIDTH (FT)	Full/Partial Depth	SQ YD	SQ YD	SQ YD	SQ YD	TONS	FOOT	TONS	SQ YD	SQ YD	SQ YD	(EACH)	(EACH)	(SQ YD)	(FT)	
		SOUTHBOUND																			
1	0.3	HMA	tween 2 and ra	90	2	Partial						90	2.27								
2	0.4	HMA	ramp	240	4	Partial				106.67	12.12										
3	0.6	HMA	2	6	12	Full								8.00			20				48.00
4	0.7	HMA	2-ramp	4	2	Partial	0.89				0.10										
5	0.8	HMA	1-2	30	2	Partial						30	0.76								
6	0.8	HMA	ramp	160	12	Partial				213.33	24.23										
7	1	HMA	2-ramp	560	2	Partial						560	14.14								
8	1.1	HMA	2-1	50	2	Partial						50	1.26								
9	1.1	HMA	2	12	12	Full										16.00			20		16.00
10	1.1	HMA	1	6	6	Partial	4.00				0.45										60.00
11	1.2	HMA	1	15	12	Partial		20.00			2.27										
12	1.2	HMA	2	15	6	Partial		10.00			1.14										
13	1.2	HMA	1	4	4	Partial	1.78				0.20										
14	1.2	HMA	1	6	6	Partial	4.00				0.45										
15	1.2	HMA	1	25	12	Partial		33.33			3.79										
16	1.2	HMA	2	25	6	Partial		16.67			1.89										
17	1.2	HMA	1	25	12	Partial		33.33			3.79										
18	1.2	HMA	1&2	10	2	Partial						10	0.25								
19	1.2	HMA	1	10	12	Full								13.33			20				56.00
20	1.2	HMA	2	6	12	Full								8.00			20				48.00
21	1.3	HMA	2	20	12	Partial		26.67			3.03										
22	1.3	HMA	2	10	12	Full								13.33			20				56.00
23	1.3	HMA	2	6	6	Partial	4.00				0.45										
24	1.3	HMA	1	20	12	Full										26.67	20	9	26.67		76.00
25	1.3	HMA	2	10	12	Full								13.33			20				56.00
26	1.3	HMA	1-2	30	2	Partial						30	0.76								
27	1.6	HMA	1	6	12	Full								8.00			20				48.00
28	1.6	HMA	2	15	12	Full									20.00		20		20.00		66.00
29	1.7	HMA	2	25	6	Partial		16.67			1.89										
30	1.8	HMA	2	10	12	Partial		13.33			1.51										
31	1.8	HMA	2	12	6	Partial		8.00			0.91										
32	1.8	HMA	2	6	6	Partial	4.00				0.45										
33	1.9	HMA	2	12	6	Partial		8.00			0.91										
34	1.9	HMA	2	12	6	Partial		8.00			0.91										
35	2.2	HMA	2	6	6	Partial	4.00				0.45										
36	2.2	HMA	1	12	12	Partial		16.00			1.82										
37	2.2	HMA	2	12	6	Partial		8.00			0.91										
38	2.8	HMA	2	6	6	Partial	4.00				0.45										
39	2.9	HMA	1-2	150	2	Partial						150	3.79								
40	2.9	HMA	1-2	20	2	Partial						20	0.50								
41	3.1	HMA	2	10	6	Partial	6.67				0.76										
42	3.8	HMA	2	20	6	Partial		13.33			1.51										
SUBTOTALS							33.33	231.33	0.00	320.00	66.42	940.00	23.73	64.00	36.00	26.67	180.00	9.00	62.67	514.00	

NOTE: LANE 1 = LEFT LANE
LANE 2 = MIDDLE LANE
LANE 3 = RIGHT LANE

* FAP 103674

FILE NAME =	USER NAME = lagemange	DESIGNED -	REVISED -	STATE OF ILLINOIS DEPARTMENT OF TRANSPORTATION	SCHEDULE OF QUANTITIES	F.A.P. RTE.	SECTION	COUNTY	TOTAL SHEETS	SHEET NO.
et:\pwork\pwork\lagemange\10388138\10388138-1\10388138-1.dgn	DRAWN -	REVISED -	•			29-I-1, (31,410,410-1)I-1	ST. CLAIR	17	14	
PLOT SCALE = 100.0000' / 1in.	CHECKED -	REVISED -	CONTRACT NO. 76H25							
PLOT DATE = 4/15/2014	DATE -	REVISED -	SCALE:			SHEET NO. OF SHEETS	STA. TO STA.	FED. ROAD DIST. NO.	ILLINOIS FED. AID PROJECT	

IL-158 PAVEMENT PATCHING SCHEDULE							PARTIAL DEPTH REMOVAL TYPE I, 2"	PARTIAL DEPTH REMOVAL TYPE II, 2"	PARTIAL DEPTH REMOVAL TYPE III, 2"	PARTIAL DEPTH REMOVAL TYPE IV, 2"	PARTIAL DEPTH PATCHING	LONGITUDINAL PARTIAL DEPTH REMOVAL, 2"	LONGITUDINAL PARTIAL DEPTH PATCHING, 2"	CLASS B PATCH TYPE II, 11"	CLASS B PATCH TYPE III, 11"	CLASS B PATCH TYPE IV, 11"	DOWEL BARS 1 1/2 INCH	TIE BARS 3/4"	PAVEMENT FABRIC	SAW CUTS
PATCH #	MILE MARKER	SHOULDER TYPE	LANE	LENGTH (FT)	LANE WIDTH (FT)	Full/Partial Depth	SQ YD	SQ YD	SQ YD	SQ YD	TONS	FOOT	TONS	SQ YD	SQ YD	SQ YD	(EACH)	(EACH)	(SQ YD)	(FT)
NORTHBOUND																				
43	3.7	HMA	1-2	10	2	Partial						10	0.25							
44	3.6	HMA	1-2	25	2	Partial						25	0.63							
45	2.8	HMA	2	6	12	Full								8.00			20			48.00
46	1.2	HMA	2	12	6	Partial		8.00			0.91									
47	2.6	HMA	2	6	6	Partial	4.00				0.45									
48	2.6	HMA	2	35	6	Partial		23.33			2.65									
49	1.9	HMA	2	25	6	Partial		16.67			1.89									
50	1.9	HMA	1-2	25	2	Partial	5.56				0.63									
51	1.9	HMA	1	6	6	Partial	4.00				0.45									
52	1.7	HMA	2	20	6	Partial		13.33			1.51									
53	1.7	HMA	2	6	6	Partial	4.00				0.45									
54	1.6	HMA	2	12	6	Partial		8.00			0.91									
55	1.6	HMA	1	12	6	Partial		8.00			0.91									
56	1.6	HMA	2	40	6	Partial		26.67			3.03									
57	1.6	HMA	2	25	6	Partial		16.67			1.89									
58	1.5	HMA	2	10	6	Partial	6.67				0.76									
59	1.5	HMA	2	90	6	Partial			60.00		6.82									
60	1.5	HMA	2	40	6	Partial		26.67			3.03									
61	1.4	HMA	2	15	6	Partial		10.00			1.14									
62	1.4	HMA	1	110	4	Partial		48.89			5.55									
63	1.4	HMA	2	12	6	Partial		8.00			0.91									
64	1.4	HMA	2	35	6	Partial		23.33			2.65									
65	1.4	HMA	1	210	6	Partial			140.00		15.90									
66	1.4	HMA	2	12	6	Partial		8.00			0.91									
67	1.4	HMA	2	25	6	Partial		16.67			1.89									
68	1.4	HMA	2	15	6	Partial		10.00			1.14									
69	1.4	HMA	1	10	4	Partial	4.44				0.50									
70	1.4	HMA	2	20	6	Partial		13.33			1.51									
71	0.9	HMA	2	6	2	Partial	1.33				0.15									
72	0.9	HMA	2	6	2	Partial	1.33				0.15									
73	0.9	HMA	2	4	2	Partial	0.89				0.10									
74	0.9	HMA	2	4	2	Partial	0.89				0.10									
75	0.7	HMA	2& Ramp	200	2	Partial						200	5.05							
76	0.6	HMA	Ramp	6	12	Full								8.00			20			48.00
77	0.6	HMA	Ramp	90	2	Partial						90	2.27							
78	0.6	HMA	Ramp	35	14	Full										54.44		54.44		112.00
79	0.6	HMA	Ramp	35	14	Full										54.44	24	17	54.44	112.00
80	0.3	HMA	1	12	6	Partial	8.00	8.00			0.91									
81	0.3	HMA	2	12	12	Partial		16.00			1.82									
82	0.3	HMA	2& Ramp	70	2	Partial						70	1.77							
83	0.2	HMA	Ramp	35	14	Full										54.44	24	17	54.44	112.00
84	0.2	HMA	Ramp	35	4	Partial		15.56			1.77									
85	0.2	HMA	2	6	2	Partial	1.33				0.15									
86	0	HMA	2	12	2	Partial						12	0.30							
Ramp 64 EB to 158 NB																				
87	0.1	HMA	Ramp	150	14	Full								233.33			24	74	233.33	342.00
88	0.1	HMA	Ramp	35	14	Full								54.44			24	17	54.44	112.00
89	0.2	HMA	Ramp	40	14	Full								62.22			24	19	62.22	122.00
SUBTOTAL:							75.78	556.44	60.00	460.00	129.98	1347.00	34.00	80.00	36.00	540.00	340.00	153.00	576.00	1522.00
ANTICIPATED FAILURES (15%):							11.37	83.47	9.00	69.00	19.50	202.05	5.10	12.00	5.40	81.00	51.00	23.00	86.40	228.30
TOTAL:							87.14	639.91	69.00	529.00	149.48	1549.05	39.10	92.00	41.40	621.00	391.00	176.00	662.40	1750.30

NOTE: LANE 1 = LEFT LANE
LANE 2 = MIDDLE LANE
LANE 3 = RIGHT LANE

* FAP 103/674

FILE NAME =	USER NAME = lagemange	DESIGNED -	REVISED -	STATE OF ILLINOIS DEPARTMENT OF TRANSPORTATION	SCHEDULE OF QUANTITIES			F.A.P. RTE.	SECTION	COUNTY	TOTAL SHEETS	SHEET NO.
et:\pw\work\p\d\lagemange\0388138\0376H25-sh-t-plan.dgn	DRAWN -	REVISED -	*					29-I-1, (31,410,410-1)I-1	ST. CLAIR	17	15	
PLOT SCALE = 100.0000' / in.	CHECKED -	REVISED -	CONTRACT NO. 76H25									
PLOT DATE = 4/15/2014	DATE -	REVISED -	SCALE:					SHEET NO. OF SHEETS	STA. TO STA.	FED. ROAD DIST. NO.	ILLINOIS FED. AID PROJECT	

IL ROUTE 158 PAVEMENT MARKING SCHEDULE						
PATCH NUMBER	MILE MARKER	LENGTH FOOT	4" WHITE SKIP DASH PAINT PAV. MARKING	4" SOLID WHITE PAINT PAV. MARKING	4" SOLID YELLOW PAINT PAV. MARKING	RAISED REFLECTIVE PAVEMENT MARKER
			FOOT	FOOT	FOOT	EACH
1	0.3	90		90.00		2.00
2	0.4	240		240.00		3.00
3	0.6	6	1.50	6.00		1.00
4	0.7	4	1.00	4.00		1.00
5	0.8	30	7.50	30.00		1.00
6	0.8	160		160.00		2.00
7	1	560		560.00		7.00
8	1.1	50		50.00		1.00
9	1.1	12	3.00	12.00		1.00
10	1.1	6	1.50		6.00	1.00
11	1.2	15	3.75		15.00	1.00
12	1.2	15	3.75	15.00		1.00
13	1.2	4	1.00		4.00	1.00
14	1.2	6	1.50		6.00	1.00
15	1.2	25	6.25		25.00	1.00
16	1.2	25	6.25	25.00		1.00
17	1.2	25	6.25		25.00	1.00
18	1.2	10	2.50	10.00		1.00
19	1.2	10	2.50		10.00	1.00
20	1.2	6	1.50	6.00		1.00
21	1.3	20	5.00	20.00		1.00
22	1.3	10	2.50	10.00		1.00
23	1.3	6	1.50	6.00		1.00
24	1.3	20	5.00		20.00	1.00
25	1.3	10	2.50	10.00		1.00
26	1.3	30	7.50	30.00		1.00
27	1.6	6	1.50		6.00	1.00
28	1.6	15	3.75	15.00		1.00
29	1.7	25	6.25	25.00		1.00
30	1.8	10	2.50	10.00		1.00
31	1.8	12	3.00	12.00		1.00
32	1.8	6	1.50	6.00		1.00
33	1.9	12	3.00	12.00		1.00
34	1.9	12	3.00	12.00		1.00
35	2.2	6	1.50	6.00		1.00
36	2.2	12	3.00		12.00	1.00
37	2.2	12	3.00	12.00		1.00
38	2.8	6	1.50	6.00		1.00
39	2.9	150		150.00		2.00
40	2.9	20	5.00	20.00		1.00
41	3.1	10	2.50	10.00		1.00
42	3.8	20	5.00	20.00		1.00
NORTHBOUND						
43	0.3	10	2.50	10.00		1.00
44	0.4	25	6.25	25.00		1.00
45	1.2	6	1.50	6.00		1.00
46	1.2	12	3.00	12.00		1.00
47	1.4	6	1.50	6.00		1.00
48	1.4	35	8.75	35.00		1.00
49	2.1	25	6.25	25.00		1.00
50	2.1	25	6.25	25.00		1.00
51	2.1	6	1.50		6.00	1.00
52	2.3	20	5.00	20.00		1.00
53	2.3	6	1.50	6.00		1.00
54	2.4	12	3.00	12.00		1.00
55	2.4	12	3.00		12.00	1.00
56	2.4	40	10.00	40.00		1.00
57	2.4	25	6.25	25.00		1.00
58	2.5	10	2.50	10.00		1.00
59	2.5	90		90.00		1.00
60	2.5	40	10.00	40.00		1.00
61	2.6	15	3.75	15.00		1.00
62	2.6	110			110.00	2.00
63	2.6	12	3.00	12.00		1.00
64	2.6	35	8.75	35.00		1.00
65	2.6	210			210.00	3.00
66	2.6	12	3.00	12.00		1.00
67	2.6	25	6.25	25.00		1.00
68	2.6	15	3.75	15.00		1.00
69	2.6	10	2.50		10.00	1.00
70	2.6	20	5.00	20.00		1.00
71	3.1	6	1.50	6.00		1.00
72	3.1	6	1.50	6.00		1.00
73	3.1	4	1.00	4.00		1.00
74	3.1	4	1.00	4.00		1.00
75	3.3	200		200.00		3.00
76	3.4	6	1.50	6.00		1.00
77	3.4	90		90.00		1.00
78	3.4	35	8.75	35.00		1.00
79	3.4	35	8.75	35.00		1.00
80	3.7	12	3.00		12.00	1.00
81	3.7	12	3.00	12.00		1.00
82	3.7	70		70.00		1.00
83	3.8	35	8.75	35.00		1.00
84	3.8	35	8.75	35.00		1.00
85	3.8	6	1.50	6.00		1.00
86	4	12	3.00	12.00		1.00
RAMP 64 EB TO 158 NB						
87	0.1	150		150.00		2.00
88	0.1	35	8.75	35.00		1.00
89	0.2	40	10.00	40.00		1.00
			305.25	2902.00	489.00	106.00
			305.00	2902.00	489.00	106.00
			4,239			106

* FAP 103674

FILE NAME =	USER NAME = lagemanng	DESIGNED -	REVISED -
et:\pw\work\p\dot\lagemanng\0388138\0376H25-sht-plan.dgn		DRAWN -	REVISED -
	PLOT SCALE = 100.0000' / in.	CHECKED -	REVISED -
	PLOT DATE = 4/15/2014	DATE -	REVISED -

**STATE OF ILLINOIS
DEPARTMENT OF TRANSPORTATION**

SCHEDULE OF QUANTITIES		
SCALE:	SHEET NO. OF SHEETS	STA. TO STA.

F.A.P. RTE.	SECTION	COUNTY	TOTAL SHEETS	SHEET NO.
*	29-I-1, (31,410,410-1)I-1	ST. CLAIR	17	16
FED. ROAD DIST. NO. ILLINOIS FED. AID PROJECT			CONTRACT NO. 76H25	

IL ROUTE 15 PAINT PAVEMENT MARKING-LINE 4" SCHEDULE						
PATCH NUMBER EASTBOUND	MILE MARKER	LENGTH	4" WHITE SKIP DASH	4" SOLID WHITE	4" SOLID YELLOW	RAISED REFLECTIVE PAVEMENT MARKER
		FOOT	FOOT	FOOT	FOOT	EACH
1	0.000	12.00	3.00		12.00	1.00
2	0.000	12.00	6.00			1.00
3	0.030	30.00	7.50		30.00	1.00
4	0.050	12.00	3.00		12.00	1.00
5	0.050	12.00	6.00			1.00
6	0.100	12.00	3.00		12.00	1.00
7	0.100	12.00	6.00			1.00
8	0.140	12.00	3.00		12.00	1.00
9	0.140	12.00	6.00			1.00
10	0.200	12.00	6.00			1.00
11	0.220	12.00	3.00		12.00	1.00
12	0.220	12.00	6.00			1.00
13	0.240	8.00	2.00		8.00	1.00
14	0.240	8.00	4.00			1.00
15	0.260	50.00	25.00			1.00
16	0.300	12.00	3.00		12.00	1.00
17	0.300	12.00	3.00	12.00		1.00
18	0.340	12.00	3.00		12.00	1.00
19	0.340	12.00	3.00		12.00	1.00
20	0.340	12.00	3.00	12.00		1.00
21	0.400	8.00	2.00		8.00	1.00
22	0.500	6.00	3.00			1.00
23	0.600	12.00	3.00		12.00	1.00
24	0.600	12.00	6.00			1.00
25	0.600	6.00	1.50	6.00		1.00
26	0.620	12.00	6.00			1.00
27	0.630	12.00	6.00			1.00
28	0.640	12.00	6.00			1.00
29	0.670	30.00	15.00			1.00
30	0.700	12.00	6.00			1.00
31	0.700	12.00	3.00	12.00		1.00
32	0.800	12.00	6.00			1.00
33	1.000	12.00	3.00		12.00	1.00
34	1.000	12.00	6.00			1.00
35	1.050	12.00	6.00			1.00
36	1.100	12.00	6.00			1.00
37	1.200	12.00	6.00			1.00
38	1.300	12.00	6.00			1.00
39	1.310	8.00	4.00			1.00
40	1.320	8.00	4.00			1.00
41	1.330	50.00	25.00			1.00
42	1.350	12.00	6.00			1.00
43	1.370	12.00	6.00			1.00
44	1.400	12.00	6.00			1.00
45	1.450	12.00	6.00			1.00
46	1.450	12.00	3.00	12.00		1.00
47	1.500	8.00	4.00			1.00
48	1.500	6.00	1.50	6.00		1.00
49	1.510	12.00	6.00			1.00
50	1.520	12.00	6.00			1.00
51	1.530	6.00	3.00			1.00
52	1.540	12.00	6.00			1.00
53	1.550	6.00	3.00			1.00
54	1.550	6.00	1.50	6.00		1.00
55	1.580	6.00	3.00			1.00
56	1.590	12.00	6.00			1.00
57	1.600	6.00	3.00			1.00
58	1.630	12.00	3.00		12.00	1.00
59	1.630	12.00	6.00			1.00
60	1.630	12.00	3.00	12.00		1.00
61	1.650	12.00	6.00			1.00
62	1.650	12.00	3.00	12.00		1.00
63	1.670	12.00	3.00	12.00		1.00
64	1.670	12.00	6.00			1.00
65	1.670	8.00	2.00	8.00		1.00
SUBTOTALS			336.00	110.00	178.00	65.00

IL ROUTE 15 PAINT PAVEMENT MARKING-LINE 4" SCHEDULE						
PATCH # WESTBOUND	MILE MARK	LENGTH	4" WHITE SKIP DASH	4" SOLID WHITE	4" SOLID YELLOW	RAISED REFLECTIVE PAVEMENT MARKER
		FOOT	FOOT	FOOT	FOOT	EACH
66	1.650	6.00	1.50	6.00		1.00
67	0.750	12.00	3.00		12.00	1.00
68	0.700	12.00	3.00		12.00	1.00
69	0.650	12.00	3.00		12.00	1.00
70	0.620	12.00	6.00			1.00
71	0.620	6.00	1.50		6.00	1.00
72	0.600	12.00	3.00		12.00	1.00
73	0.600	12.00	6.00			1.00
74	0.600	12.00	3.00	12.00		1.00
75	0.580	12.00	3.00		12.00	1.00
76	0.580	12.00	6.00			1.00
77	0.580	12.00	3.00		12.00	1.00
78	0.550	12.00	3.00		12.00	1.00
79	0.540	12.00	6.00			1.00
80	0.530	12.00	3.00		12.00	1.00
81	0.520	12.00	3.00		12.00	1.00
82	0.520	12.00	6.00			1.00
83	0.510	12.00	3.00		12.00	1.00
84	0.500	12.00	3.00		12.00	1.00
85	0.490	12.00	3.00		12.00	1.00
86	0.480	12.00	3.00		12.00	1.00
87	0.470	12.00	6.00			1.00
88	0.450	12.00	3.00		12.00	1.00
89	0.430	12.00	6.00			1.00
90	0.430	12.00	3.00		12.00	1.00
91	0.410	12.00	3.00		12.00	1.00
92	0.410	12.00	6.00			1.00
93	0.390	30.00	7.50	30.00		1.00
94	0.390	12.00	3.00	12.00		1.00
95	0.350	6.00	3.00			1.00
96	0.300	12.00	3.00		12.00	1.00
97	0.300	12.00	6.00			1.00
98	0.150	12.00	3.00	12.00		1.00
99	0.150	12.00	6.00			1.00
100	0.120	12.00	3.00		12.00	1.00
101	0.100	12.00	3.00		12.00	1.00
102	0.050	12.00	3.00		12.00	1.00
103	0.050	12.00	6.00			1.00
104	0.000	12.00	3.00	12.00		1.00
105	0.000	12.00	6.00			1.00
SUBTOTAL			157.50	84.00	246.00	40.00
TOTAL			493.50	194.00	424.00	105.00
TOTAL				1,112		105

IL-158 / IL-15 TOTAL QUANTITIES PATCHING										
PARTIAL DEPTH REMOVAL TYPE I, 2"	PARTIAL DEPTH REMOVAL TYPE II, 2"	PARTIAL DEPTH REMOVAL TYPE III, 2"	PARTIAL DEPTH REMOVAL TYPE IV, 2"	PARTIAL DEPTH PATCHING	LONGITUDINAL PARTIAL DEPTH REMOVAL, 2"	LONGITUDINAL PARTIAL DEPTH PATCHING, 2"	CLASS B PATCH TYPE II, 11"	CLASS B PATCH TYPE III, 11"	CLASS B PATCH TYPE IV, 11"	PATCHING REINFORCEMENT
SQ YD	SQ YD	SQ YD	SQ YD	TONS	FOOT	TONS	SQ YD	SQ YD	SQ YD	(SQ YD)
87.14	639.91	69.00	529.00	149.48	1549.05	39.10	119.60	409.40	621.00	594.93

DOWEL BARS 1 1/2 INCH	TIE BARS 3/4"	PAVEMENT FABRIC	SAW CUTS	CLASS B PATCH TYPE III, 15"	CLASS B PATCH TYPE IV, 15"	CLASS A PATCH TYPE I, 11"	CLASS A PATCH TYPE II, 11"	CLASS A PATCH TYPE III, 11"	CLASS A PATCH TYPE IV, 11"
EACH	EACH	SQ YD	FT	SQ YD	SQ YD	SQ YD	SQ YD	SQ YD	SQ YD
1311.00	274.00	1389.20	8797.50	294.40	46.00	87.40	404.80	64.40	38.33

IL-158 / IL-15 TOTAL QUANTITIES PAVEMENT MARKING				
4" WHITE SKIP DASH PAV. MARKING	4" SOLID WHITE PAINT PAV. MARKING	4" SOLID YELLOW PAINT PAV. MARKING	4" WHITE SKIP DASH THERMOPLASTIC PAVEMENT MARKING	RAISED REFLECTIVE PAVEMENT MARKER
FOOT	FOOT	FOOT	FOOT	EACH
799.00	3096.00	913.00	543.00	211.00
5351.00				211.00

NOTE: LANE 1 = LEFT LANE
LANE 2 = MIDDLE LANE
LANE 3 = RIGHT LANE

FILE NAME =	USER NAME = lagemannge	DESIGNED -	REVISED -
et:\pwork\pwork\dot\lagemannge\10388138\0876H25-shr-plan.dgn		DRAWN -	REVISED -
	PLOT SCALE = 100.0000' / 1"	CHECKED -	REVISED -
	PLOT DATE = 4/15/2014	DATE -	REVISED -

STATE OF ILLINOIS
DEPARTMENT OF TRANSPORTATION

SCHEDULE OF QUANTITIES		
SCALE:	SHEET NO. OF SHEETS	STA. TO STA.

F.A.P. RTE.	SECTION	COUNTY	TOTAL SHEETS	SHEET NO.
*	29-I-1, (31,410,410-1)I-1	ST. CLAIR	17	17
CONTRACT NO. 76H25				
FED. ROAD DIST. NO. ILLINOIS FED. AID PROJECT				

* FAP 103674