

STATE OF ILLINOIS
 DEPARTMENT OF TRANSPORTATION
 DIVISION OF HIGHWAYS
**PROPOSED
 HIGHWAY PLANS**

FAI ROUTE 255 (I-255)
 SECTION DIST 8 PATCHING 2014-2

PATCHING SPRING ROAD REPAIR
 VARIOUS COUNTIES
 C-98-053-14

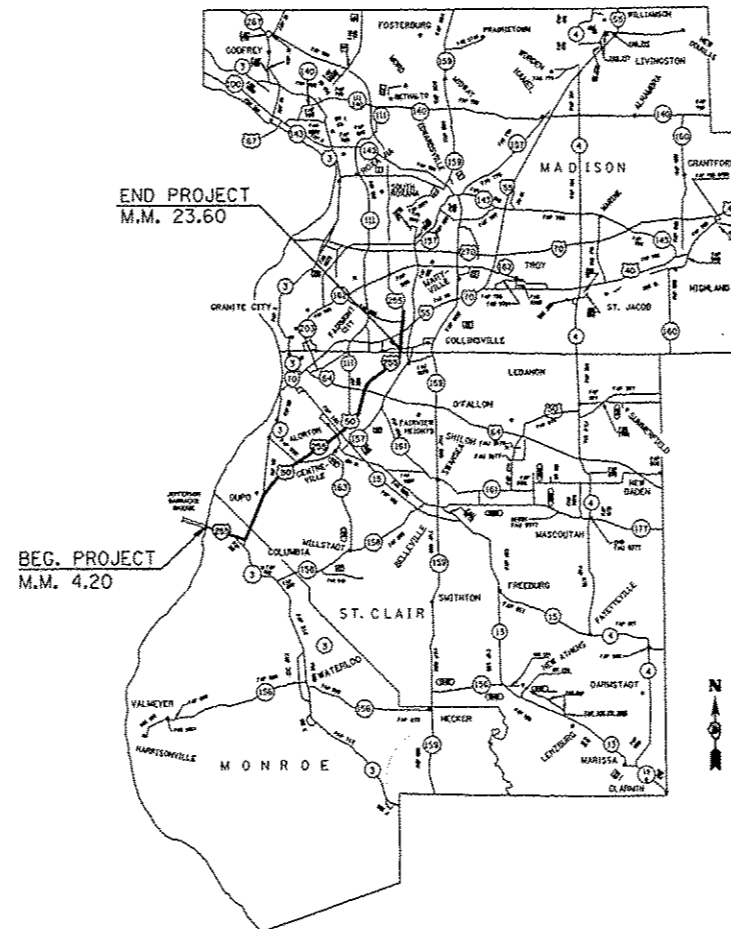
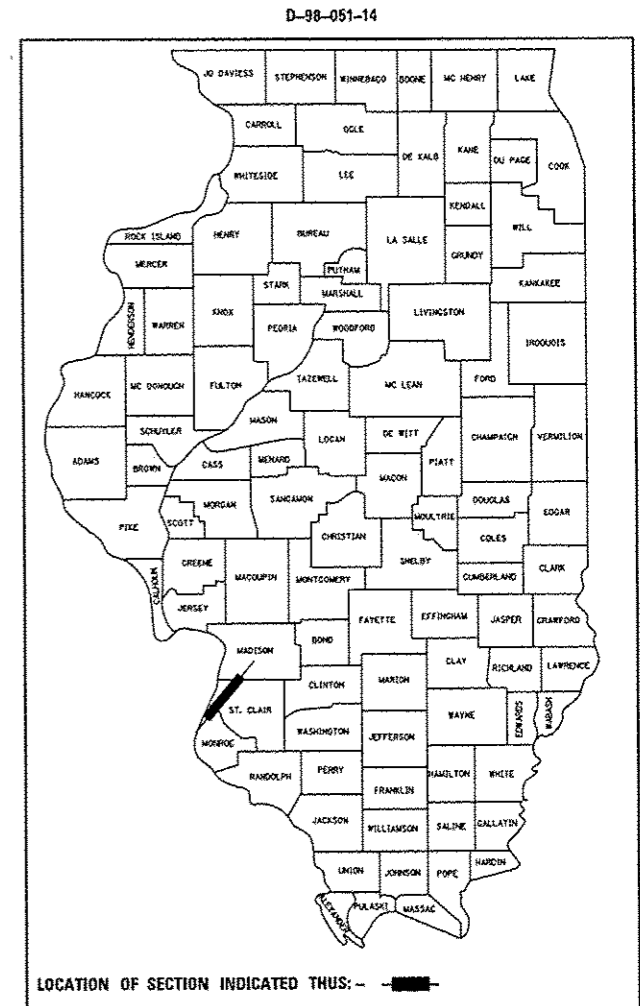
F.A.I. RTE.	SECTION	COUNTY	TOTAL SHEETS	SHEET NO.
255	DIST. 8 PATCHING 2014-2	VARIOUS	8	1
		ILLINOIS	CONTRACT NO. 76H26	

FOR INDEX OF SHEETS, SEE SHEET NO. 2

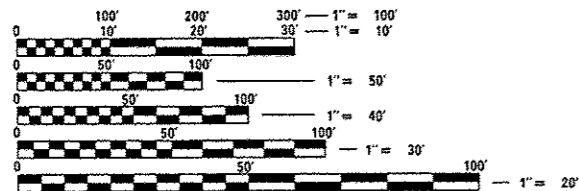
JB BRIDGE TO 1ST ST.
 2013 ADT = 54900
 SU=1.9% MU=10.2%

1ST ST. TO MOUSETTE RD.
 2013 ADT = 40900
 SU=2.8% MU=13.1%

MOUSETTE RD. TO I 270
 2013 ADT = 43000
 SU=3.1% MU=12.6%



START LAT - 38.48389
 LONG - -90.26639
 END LAT - 38.65972
 LONG - -90.03167



FULL SIZE PLANS HAVE BEEN PREPARED USING STANDARD ENGINEERING SCALES. REDUCED SIZED PLANS WILL NOT CONFORM TO STANDARD SCALES. IN MAKING MEASUREMENTS ON REDUCED PLANS, THE ABOVE SCALES MAY BE USED.

J.U.L.I.E.
 JOINT UTILITY LOCATION INFORMATION FOR EXCAVATION
 1-800-892-0123
 OR 811

PROJECT ENGINEER: MICHAEL PRITCHETT (618) 346-3180
 DESIGNER: BO WEDMORE (618) 346-3206

CONTRACT NO. 76H26

LOCATION MAP
 NOT TO SCALE

NET LENGTH = 19.40 MI 102,432 FT
 GROSS LENGTH = 19.40 MI 102,432 FT

STATE OF ILLINOIS
 DEPARTMENT OF TRANSPORTATION
 DIVISION OF HIGHWAYS

SUBMITTED *April 11, 2014*

Jeffrey Z. Kane
 DEPUTY DIRECTOR OF HIGHWAYS, REGION ENGINEER

John D. Baranzelli P.E./E
 ENGINEER OF DESIGN AND ENVIRONMENT

May 9, 2014

Onur Osman P.E./E
 DIRECTOR OF HIGHWAYS, CHIEF ENGINEER

PRINTED BY THE AUTHORITY
 OF THE STATE OF ILLINOIS