

06-13-14 LETTING ITEM 148

STATE OF ILLINOIS
DEPARTMENT OF TRANSPORTATION
DIVISION OF HIGHWAYS

**PROPOSED
HIGHWAY PLANS**

FAI ROUTE 255 (I-255)
SECTION DIST 8 PATCHING 2014-2

PATCHING SPRING ROAD REPAIR
VARIOUS COUNTIES
C-98-053-14

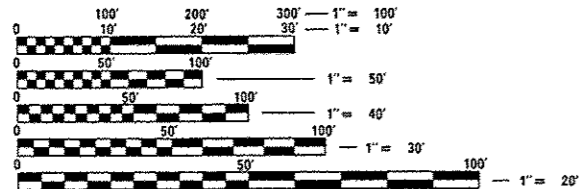
FOR INDEX OF SHEETS, SEE SHEET NO. 2

JB BRIDGE TO 1ST ST.
2013 ADT = 54900
SU=1.9% MU=10.2%

1ST ST. TO MOUSETTE RD.
2013 ADT = 40900
SU=2.8% MU=13.1%

MOUSETTE RD. TO I 270
2013 ADT = 43000
SU=3.1% MU=12.6%

START LAT - 38.48389
LONG - -90.26639
END LAT - 38.65972
LONG - -90.03167

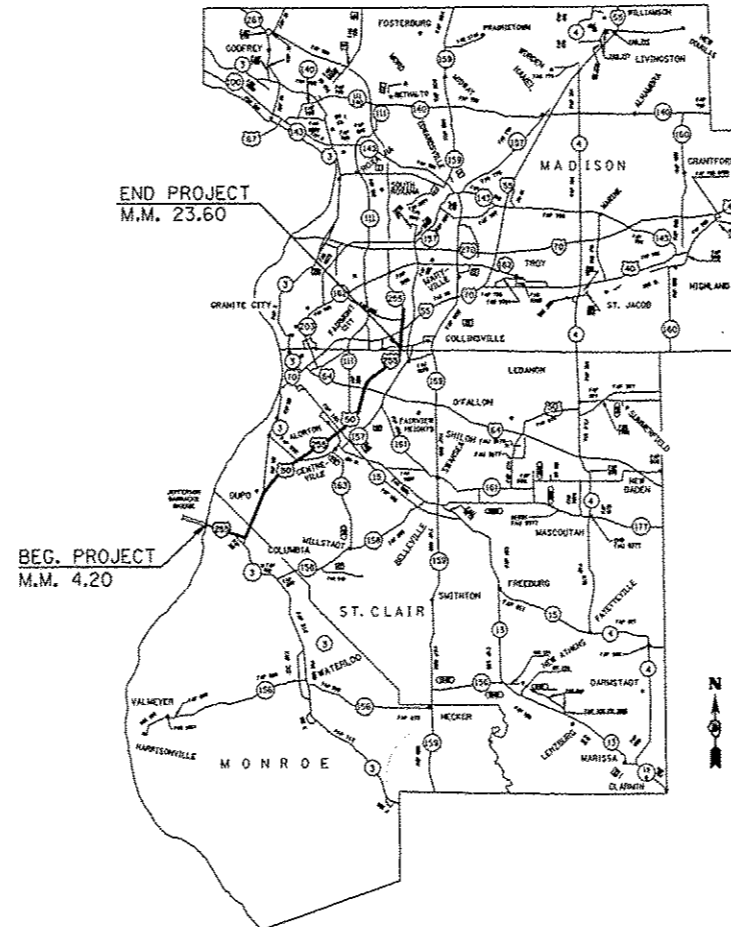


FULL SIZE PLANS HAVE BEEN PREPARED USING STANDARD ENGINEERING SCALES. REDUCED SIZED PLANS WILL NOT CONFORM TO STANDARD SCALES. IN MAKING MEASUREMENTS ON REDUCED PLANS, THE ABOVE SCALES MAY BE USED.

J.U.L.I.E.
JOINT UTILITY LOCATION INFORMATION FOR EXCAVATION
1-800-892-0123
OR 811

PROJECT ENGINEER: MICHAEL PRITCHETT (618) 346-3180
DESIGNER: BO WEDMORE (618) 346-3206

CONTRACT NO. 76H26

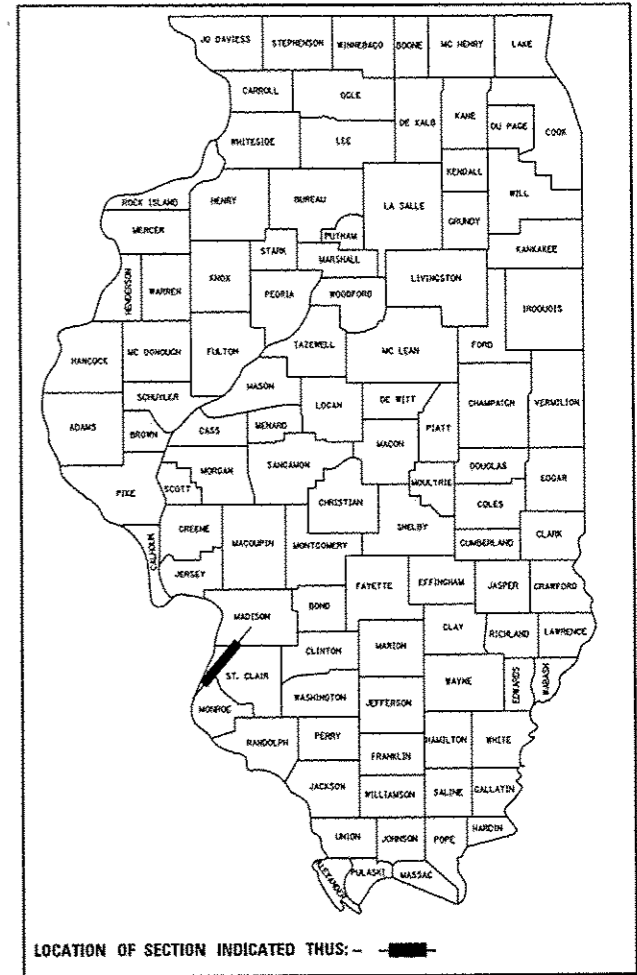


LOCATION MAP
NOT TO SCALE

NET LENGTH = 19.40 MI 102,432 FT
GROSS LENGTH = 19.40 MI 102,432 FT

F.A.I. RTE.	SECTION	COUNTY	TOTAL SHEETS	SHEET NO.
255	DIST. 8 PATCHING 2014-2	VARIOUS	8	1
		ILLINOIS	CONTRACT NO. 76H26	

D-98-051-14



LOCATION OF SECTION INDICATED THUS: - ■ -

STATE OF ILLINOIS
DEPARTMENT OF TRANSPORTATION
DIVISION OF HIGHWAYS

SUBMITTED *April 11, 2014*
Jeffrey Z. K...
DEPUTY DIRECTOR OF HIGHWAYS, REGION ENGINEER

May 9, 2014
John D. Baranzelli P.E./E
ENGINEER OF DESIGN AND ENVIRONMENT

May 9, 2014
Onur Osman P.E./E
DIRECTOR OF HIGHWAYS, CHIEF ENGINEER

PRINTED BY THE AUTHORITY
OF THE STATE OF ILLINOIS

GENERAL NOTES

1. THE CONTRACTOR SHALL VERIFY ALL DIMENSIONS AND CONDITIONS IN THE FIELD PRIOR TO CONSTRUCTION AND ORDERING OF MATERIALS.
2. HIGH EARLY STRENGTH CONCRETE MIX SHALL BE USED FOR ALL PCC PATCHING.
3. THE LOCATIONS OF THE REPAIR AREAS AS SHOWN IN THE PLANS ARE APPROXIMATE LOCATIONS. THE EXACT LOCATIONS SHALL BE DETERMINED BY THE ENGINEER.
4. UTILITY INTERFERENCES ARE NOT ANTICIPATED ON THIS CONTRACT. IT SHALL BE THE CONTRACTOR'S RESPONSIBILITY TO COORDINATE HIS CONSTRUCTION ACTIVITIES WITH THE VARIOUS UTILITY OWNERS. ALL POTENTIAL CONFLICTS SHALL BE INVESTIGATED AND REMEDIAL ACTION TAKEN PRIOR TO INTERRUPTION OF THE CONTRACTOR'S PROGRESS. NO ADDITIONAL COST SHALL BE ADDED TO THE CONTRACT RESULTING FROM UTILITY CONFLICTS.
5. "ROAD CONSTRUCTION AHEAD" SIGNS SHALL BE PLACED AT EACH END OF THE PROJECT PLUS THE ENTRANCE RAMPS, AND WILL BE INCLUDED IN THE TRAFFIC CONTROL PAY ITEMS.
6. FLAGMEN SHALL BE PRESENT DURING ALL CLOSURE HOURS, INCLUDING LUNCH HOUR, AND NO ADDITIONAL COMPENSATION SHALL BE ALLOWED.
7. A QUANTITY OF 10 CALENDAR MONTHS FOR 'CHANGEABLE MESSAGE SIGN' HAS BEEN INCLUDED IN THE PLANS. SEE SHEET NO. 13 FOR LOCATIONS.
8. THE RESIDENT ENGINEER SHALL VERIFY THE EXISTENCE OF IN PAVEMENT DETECTOR LOOPS. THE APPROXIMATE LOCATION IS AS FOLLOWS:
I-255 0.5 MILES NORTH OF IL 15 FOR THE NORTH AND SOUTHBOUND LANES. THESE PIEZOMETER/DETECTOR LOOPS SHALL BE AVOIDED DURING THE OPERATION OF PATCHING. IF THESE LOOPS ARE DISTURBED BY THE CONTRACTOR, THEY SHALL BE REPAIRED/REPLACED AT THE CONTRACTOR'S EXPENSE AND AS DIRECTED BY THE ENGINEER.
9. A QUANTITY OF 2605 FOOT PAINT PAVEMENT MARKING, LINE 6" HAS BEEN ADDED TO THE PLANS TO ALLOW FOR ANY PAVEMENT MARKING DISTURBED DURING PATCHING. NO EXISTING PAVEMENT MARKING NOT DISTURBED SHALL BE PAINTED OVER DURING THE APPLICATION.
10. A QUANTITY OF 82 RAISED REFLECTIVE PAVEMENT MARKERS HAS BEEN ADDED TO THE PLANS TO ALLOW FOR ANY MARKERS DISTURBED DURING PATCHING.
11. THE ILLINOIS DEPARTMENT OF TRANSPORTATION STRONGLY ENCOURAGES THE PRIME CONTRACTOR AND THEIR APPROVED SUB-CONTRACTORS TO HIRE MINORITY, WOMEN AND DISADVANTAGED INDIVIDUALS FROM ITS FEDERALLY FUNDED HIGHWAY CONSTRUCTION CAREERS TRAINING PROGRAM (HCCTP) TO HELP MEET WORKFORCE AND TRAINEE GOALS. THIS PROGRAM IS TRAINING MINORITIES, WOMEN AND DISADVANTAGED INDIVIDUALS IN HIGHWAY CONSTRUCTION-RELATED SKILLS, E.G., MATH FOR THE TRADES, JOB READINESS, TECHNICAL SKILLS COURSEWORK (CARPENTRY, CONCRETE FLATWORK, BLUEPRINT READING, SITE PLANS, SITE WORK, TOOLS USE, ETC.) AND OSHA 10 HOUR CERTIFICATION, TO PREPARE THEM FOR A CAREER IN THE HIGHWAY CONSTRUCTION TRADES. GRADUATES ARE WELL-TRAINED AND READY TO BECOME PRODUCTIVE ENTRY-LEVEL CONSTRUCTION WORKERS. PLEASE CONTACT THE DISTRICT 8 EEO OFFICE AT 618-346-3360 AND/OR THE HCCTP COORDINATOR AT 618/874-6528 TO LEARN MORE ABOUT THE PROGRAM AND FOR ASSISTANCE IN MEETING WORKFORCE AND TRAINEE GOALS.

INDEX OF SHEETS

1. COVER SHEET
2. GENERAL NOTES, INDEX OF SHEETS, STANDARDS
3. SUMMARY OF QUANTITIES
4. TYPICAL SECTIONS
5. PEAK HOUR RESTRICTION AND CHANGEABLE MESSAGE SIGN DETAIL
- 6.-8. SCHEDULES

STANDARDS

- | | |
|-----------|---|
| 000001-06 | STANDARD SYMBOLS, ABBREVIATIONS AND PATTERNS |
| 001006 | DECIMAL OF AN INCH AND OF A FOOT |
| 442001-04 | CLASS A PATCHES |
| 701400-07 | APPROACH TO LANE CLOSURE, FREEWAY/EXPRESSWAY |
| 701401-08 | LANE CLOSURE FREEWAY/EXPRESSWAY |
| 701411-08 | LANE CLOSURE, MULTILANE, AT ENTRANCE OR EXIT RAMP, FOR SPEEDS ≥ 45MPH |
| 701446-05 | TWO LANE CLOSURE FREEWAY/EXPRESSWAY |
| 701901-03 | TRAFFIC CONTROL DEVICES |

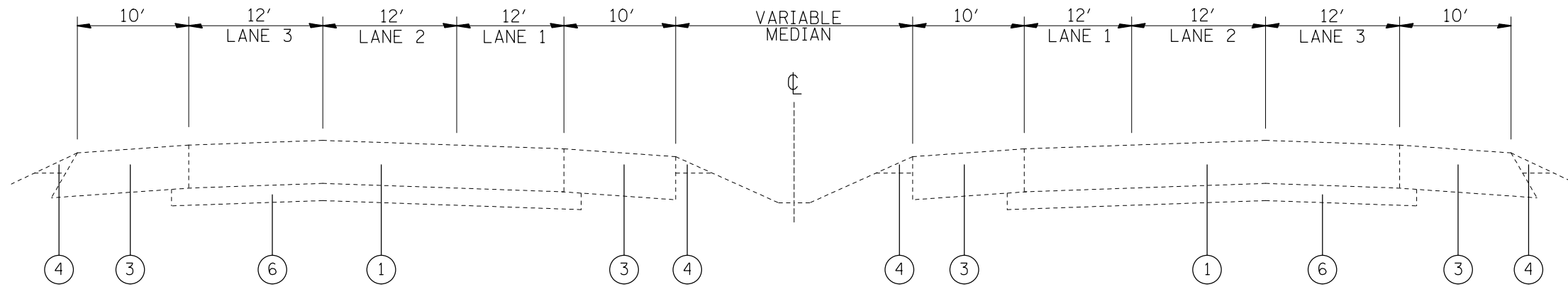
FILE NAME =	USER NAME = wadmore,jb	DESIGNED -	REVISED -	STATE OF ILLINOIS DEPARTMENT OF TRANSPORTATION	GENERAL NOTES	F.A.J. RTE.	SECTION	COUNTY	TOTAL SHEETS	SHEET NO.
c:\pwork\spidat\wadmore,jb\0368757\0876H26-shs-plan.dgn	DRAWN -	REVISED -	255			DIST. 8 PATCHING 2014-2	VARIOUS	8	2	
PLOT SCALE = 100.0000' / 1" =	CHECKED -	REVISED -	CONTRACT NO. 76H26							
PLOT DATE = 4/11/2014	DATE -	REVISED -	FED. ROAD DIST. NO. ILLINOIS FED. AID PROJECT							
				SCALE: SHEET NO. OF SHEETS STA. TO STA.						

CODE NO.	ITEM	UNIT	TOTAL QUANTITY	CONSTR. CODE	
				URBAN	100% STATE
				ROADWAY 0005	URBAN
44200549	CLASS A PATCHES, TYPE I, 10 INCH	SO YD	428	428	
44200553	CLASS A PATCHES, TYPE II, 10 INCH	SO YD	1736	1736	
44200557	CLASS A PATCHES, TYPE III, 10 INCH	SO YD	241	241	
44200559	CLASS A PATCHES, TYPE IV, 10 INCH	SO YD	623	623	
44213000	PATCHING REINFORCEMENT	SO YD	3026	3026	
44213200	SAW CUTS	FOOT	13403	13403	
44213204	TIE BARS 3/4"	EACH	381	381	
67000400	ENGINEER'S FIELD OFFICE, TYPE A	CAL MO	3	3	
67100100	MOBILIZATION	L SUM	1	1	
70100420	TRAFFIC CONTROL AND PROTECTION, STANDARD 701411	EACH	42	42	
70100800	TRAFFIC CONTROL AND PROTECTION, STANDARD 701401	L SUM	1	1	
70106800	CHANGEABLE MESSAGE SIGN	CAL MO	9	9	
70300100	SHORT TERM PAVEMENT MARKING	FOOT	540	540	
70300240	TEMPORARY PAVEMENT MARKING - LINE 6"	FOOT	2605	2605	

CODE NO.	ITEM	UNIT	TOTAL QUANTITY	CONSTR. CODE	
				URBAN	100% STATE
				ROADWAY 0005	URBAN
70301000	WORK ZONE PAVEMENT MARKING REMOVAL	SO FT	179	179	
* 78000400	THERMOPLASTIC PAVEMENT MARKING - LINE 6"	FOOT	2605	2605	
* 78100100	RAISED REFLECTIVE PAVEMENT MARKER	EACH	82	82	
X7010410	SPEED DISPLAY TRAILER	CAL MO	3	3	
φ 20076604	TRAINEES TRAINING PROGRAM GRADUATE	HOUR	500	500	
20076600	TRAINEES	HOUR	0		

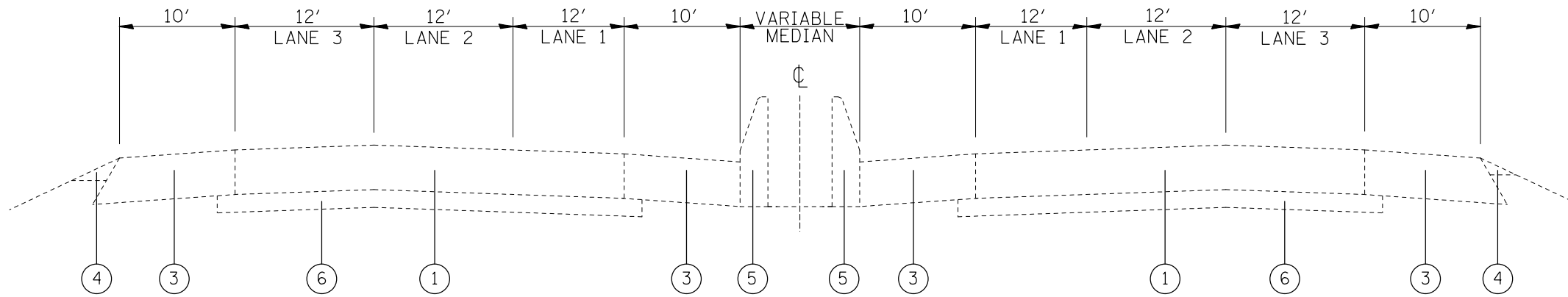
* SPECIALTY ITEM

FILE NAME =	USER NAME = wadmora_jb	DESIGNED -	REVISED -	STATE OF ILLINOIS DEPARTMENT OF TRANSPORTATION	SUMMARY OF QUANTITIES				F.A.J. RTE.	SECTION	COUNTY	TOTAL SHEETS	SHEET NO.
c:\psu\work\p\1dot\wadmora_jb\0308757\0876H26-shit-plan.dgn	DRAWN -	REVISED -	255						DIST. 8 PATCHING 2014-2	VARIOUS	8	3	
PLOT SCALE = 100.0000' / 1"	CHECKED -	REVISED -	SCALE: SHEET OF SHEETS STA. TO STA.					CONTRACT NO. 76H26					
PLOT DATE = 4/11/2014	DATE -	REVISED -	ILLINOIS FED. AID PROJECT										



FAI 255

M.M. 4.20 to M.M. 10.50
M.M. 19.20 to M.M. 23.60



FAI 255

M.M. 10.50 to M.M. 19.20

LEGEND

- ① EXISTING C.R.P.C.C. PAVEMENT 9"
- ② EXISTING P.C.C. PAVEMENT 10"
- ③ EXISTING BITUMINOUS SHOULDERS 9"
- ④ EXISTING AGGREGATE SHOULDERS, TYPE B
- ⑤ EXISTING CONCRETE BARRIER
- ⑥ EXISTING STABILIZED SUB-BASE, 4"

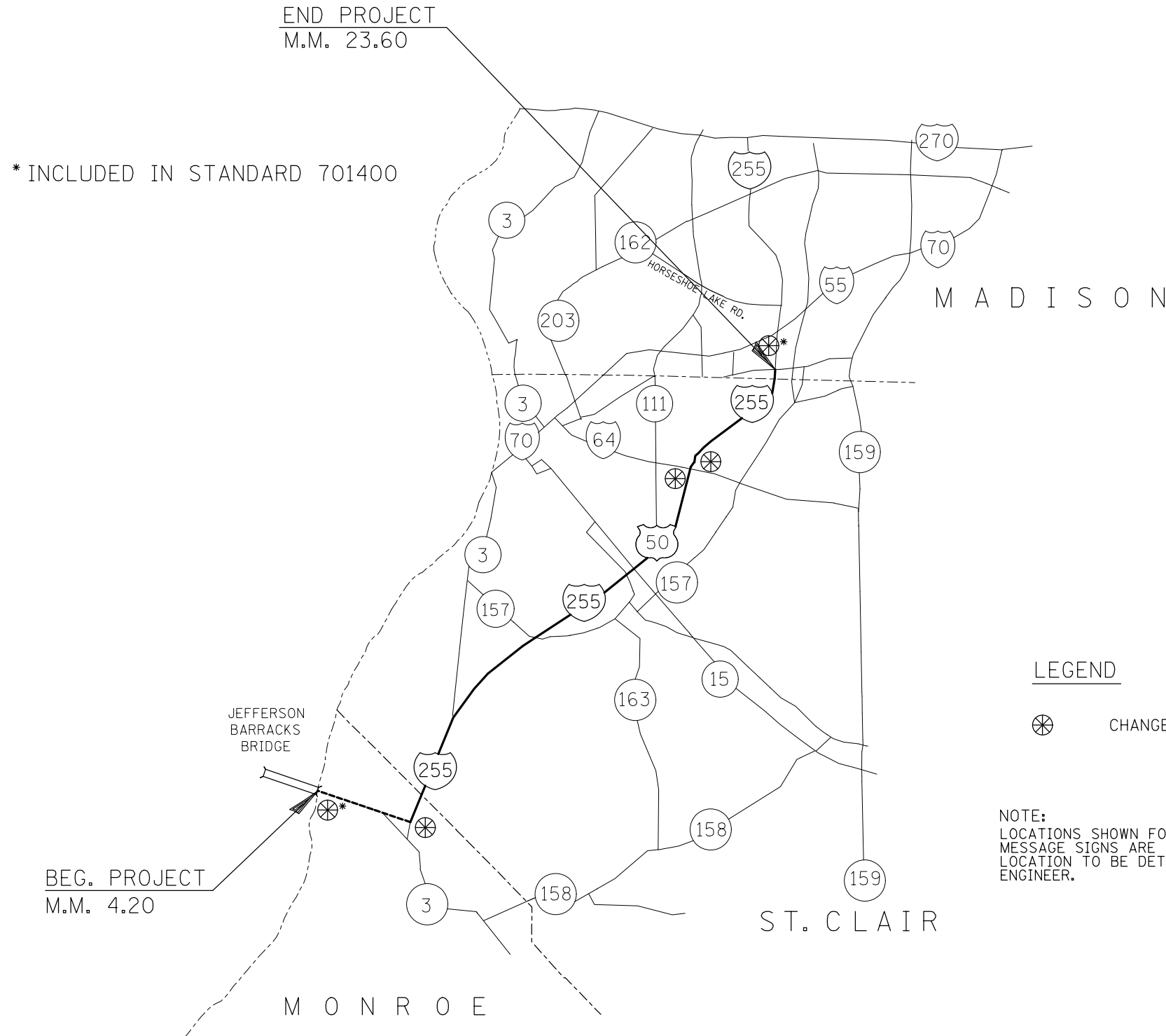
FILE NAME =	USER NAME = wedmore_jb	DESIGNED -	REVISED -
et:\pw\work\p1dot\wedmore_jb\d0388757\0876H26-sht-pln.dgn		DRAWN -	REVISED -
	PLOT SCALE = 100.0000' / 1in.	CHECKED -	REVISED -
	PLOT DATE = 4/11/2014	DATE -	REVISED -

**STATE OF ILLINOIS
DEPARTMENT OF TRANSPORTATION**

TYPICAL SECTIONS

SCALE: SHEET NO. OF SHEETS STA. TO STA.

F.A.I. RTE.	SECTION	COUNTY	TOTAL SHEETS	SHEET NO.
55/70	60-(6,7,8,9,10),60-(1,2)I-3	MADISON	8	4
FED. ROAD DIST. NO. ILLINOIS FED. AID PROJECT			CONTRACT NO. 76G88	



* INCLUDED IN STANDARD 701400

END PROJECT
M.M. 23.60

BEG. PROJECT
M.M. 4.20

LEGEND

⊗ CHANGEABLE MESSAGE SIGNS

NOTE:
LOCATIONS SHOWN FOR THE CHANGEABLE
MESSAGE SIGNS ARE APPROXIMATE. THE EXACT
LOCATION TO BE DETERMINED BY THE RESIDENT
ENGINEER.

FILE NAME =	USER NAME = wedmore_jb	DESIGNED -	REVISED -
et:\pwork\pwork\wedmore_jb\d0388757\0876H26-sht-pln.dgn		DRAWN -	REVISED -
	PLOT SCALE = 100.0000' / in.	CHECKED -	REVISED -
	PLOT DATE = 4/11/2014	DATE -	REVISED -

**STATE OF ILLINOIS
DEPARTMENT OF TRANSPORTATION**

PEAK HOUR LANE RESTRICTIONS & CHANGABLE MESSAGE SIGN DETAIL

SCALE: SHEET OF SHEETS STA. TO STA.

F.A.I. RTE.	SECTION	COUNTY	TOTAL SHEETS	SHEET NO.
255	DIST. 8 PATCHING 2014-2	VARIOUS	8	5
			CONTRACT NO. 76H26	
ILLINOIS FED. AID PROJECT				

PATCHING SCHEDULE - 1 OF 5

LOCATION	WIDTH	LENGTH	LANE #	CLASS A	CLASS A	CLASS A	CLASS A	TIE BARS	PATCHING	SAW CUTS	
				PATCHES,	PATCHES,	PATCHES,	PATCHES,				
MILE MARKER	FOOT	FOOT		TYPE I, 10	TYPE II, 10	TYPE III, 10	TYPE IV, 10	3/4"	SQ YD	FOOT	
				INCH	INCH	INCH	INCH	EACH			
NORTHBOUND											
4.2	12	6	1		8				8	54	
4.2	12	6	2		8				8	54	
4.2	12	6	3		8				8	54	
5.4	6	12	3		8				8	36	
5.4	12	12	4			16			16	60	
6.2	12	6	1		8				8	54	
6.2	12	6	2		8				8	54	
6.2	6	6	3	4					4	30	
6.2	12	8	2		11				11	56	
6.2	12	8	3		11				11	56	
6.2	12	6	2		8				8	54	
6.4	12	6	1		8				8	54	
6.4	12	6	2		8				8	54	
6.4	12	6	3		8				8	54	
7.3	6	12	3		8				8	36	
7.3	6	12	4		8				8	36	
7.7	6	12	2		8				8	36	
8.0	12	6	2		8				8	54	
8.4	12	6	2		8				8	54	
8.5	6	12	3		8				8	36	
8.5	6	12	2		8				8	36	
9.2	6	12	2		8				8	36	
10.3	6	8	3		5				5	32	
10.3	6	6	3	4					4	30	
10.7	6	12	2		8				8	36	
11.4	12	15	2			20			20	63	
11.8	12	8	3		11				11	56	
13.3	6	12	3		8				8	36	
13.3	8	12	2		11				11	44	
13.3	12	80	3				107	39	107	128	
13.5	10	12	2		13				13	52	
13.5	6	12	3		8				8	36	
15.0	6	12	2		8				8	36	
15.0	6	12	3		8				8	36	
15.7	6	12	2		8				8	36	
16.1	12	8	3		11				11	56	
16.4	6	12	3		8				8	36	
NORTHBOUND SUB-TOTAL					8	272	36	107	39	423	1761

PATCHING SCHEDULE - 2 OF 5

LOCATION	WIDTH	LENGTH	LANE #	CLASS A	CLASS A	CLASS A	CLASS A	TIE BARS	PATCHING	SAW CUTS	
				PATCHES,	PATCHES,	PATCHES,	PATCHES,				
MILE MARKER	FOOT	FOOT		TYPE I, 10	TYPE II, 10	TYPE III, 10	TYPE IV, 10	3/4"	SQ YD	FOOT	
				INCH	INCH	INCH	INCH	EACH			
NORTHBOUND											
16.5	6	12	2		8				8	36	
16.5	6	12	3		8				8	36	
16.5	6	12	3		8				8	36	
16.5	8	12	2		11				11	44	
16.7	12	8	1		11				11	56	
16.8	12	8	2		11				11	56	
16.9	12	6	2		8				8	54	
16.9	12	6	3		8				8	54	
17.0	12	12	4			16			16	60	
17.0	12	6	3		8				8	54	
17.0	12	10	2		13				13	58	
17.1	12	20	3				27	9	27	68	
17.1	12	80	3				107	39	107	128	
17.1	12	6	3		8				8	54	
17.1	6	6	3	4					4	30	
17.2	6	12	2		8				8	36	
17.2	6	6	3	4					4	30	
17.8	12	6	1		8				8	54	
17.8	12	6	2		8				8	54	
18.6	6	12	1		8				8	36	
18.6	6	12	2		8				8	36	
18.6	6	12	3		8				8	36	
18.7	12	40	3				53	19	53	88	
18.8	8	12	2		11				11	44	
18.8	8	12	3		11				11	44	
19.2	6	12	1		8				8	36	
19.2	6	12	2		8				8	36	
19.2	6	12	3		8				8	36	
19.3	6	12	1		8				8	36	
19.3	6	12	2		8				8	36	
19.3	6	12	3		8				8	36	
19.6	8	12	2		11				11	44	
19.6	8	12	1		11				11	44	
19.6	10	12	2		13				13	52	
19.6	8	12	3		11				11	44	
20.4	6	12	3		8				8	36	
22.0	6	12	2		8				8	36	
22.0	6	12	2		8				8	36	
22.0	6	12	3		8				8	36	
22.0	6	12	2		8				8	36	
22.0	6	12	2		8				8	36	
22.0	6	12	3		8				8	36	
22.0	8	12	3		11				11	44	
22.0	8	12	3		11				11	44	
22.0	6	12	3		8				8	36	
22.0	6	12	2		8				8	36	
22.0	6	12	2		8				8	36	
22.0	6	12	3		8				8	36	
22.0	6	12	2		8				8	36	
22.0	6	12	3		8				8	36	
22.1	6	12	2		8				8	36	
22.1	6	12	2		8				8	36	
22.7	6	12	2		8				8	36	
22.7	6	12	2		8				8	36	
22.7	6	12	3		8				8	36	
22.7	6	12	2		8				8	36	
22.7	6	12	3		8				8	36	
22.8	6	12	3		8				8	36	
23.0	6	6	3	4					4	30	
23.1	6	6	3	4					4	30	
23.2	6	12	2		8				8	36	
23.4	6	12	3		8				8	36	
23.4	6	12	3		8				8	36	
NORTHBOUND SUB-TOTAL					16	437	16	187	67	656	2514

PATCHING SCHEDULE - 5 OF 5

LOCATION MILE MARKER	WIDTH FOOT	LENGTH FOOT	LANE #	CLASS A PATCHES, TYPE I, 10 INCH	CLASS A PATCHES, TYPE II, 10 INCH	CLASS A PATCHES, TYPE III, 10 INCH	CLASS A PATCHES, TYPE IV, 10 INCH	TIE BARS 3/4"	PATCHING REINFORCEMENT	SAW CUTS
				SQ YD	SQ YD	SQ YD	SQ YD	EACH	SQ YD	FOOT
SOUTHBOUND										
STARTING MILE MARKER		23.6								
19.8	6	6	3	4					4	30
19.8	6	6	2	4					4	30
19.8	6	66	3				44	32	44	90
19.8	6	12	3		8				8	36
19.7	6	6	3	4					4	30
19.7	6	12	3		8				8	36
19.7	6	6	2	4					4	30
19.6	6	12	1		8				8	36
19.6	6	12	2		8				8	36
19.6	6	12	1		8				8	36
19.6	6	12	2		8				8	36
19.6	6	12	3		8				8	36
19.5	6	12	3		8				8	36
19.5	6	6	2	4					4	30
19.5	6	12	1		8				8	36
19.5	6	12	2		8				8	36
19.5	6	12	3		8				8	36
19.5	8	12	2		11				11	44
19.4	6	12	3		8				8	36
19.3	6	8	3		5				5	32
19.3	6	45	2				30	22	30	69
19.3	6	6	3	4					4	30
19.3	6	6	3	4					4	30
19.2	12	12	2			16			16	60
19.2	12	12	3			16			16	60
19.2	8	12	1		11				11	44
19.2	6	12	1		8				8	36
19.2	6	12	2		8				8	36
19.2	6	12	3		8				8	36
19	6	12	3		8				8	36
19	6	12	3		8				8	36
19	6	12	1		8				8	36
19	6	12	2		8				8	36
19	6	6	2	4					4	30
18.9	12	6	1		8				8	54
18.9	12	6	2		8				8	54
18.9	12	6	3		8				8	54
18.9	12	6	3		8				8	54
18.9	12	20	3				27	9	27	68
18.8	6	12	1		8				8	36
18.8	6	12	2		8				8	36
18.8	8	12	3		11				11	44
18.8	6	12	1		8				8	36
18.8	6	12	2		8				8	36
18.6	6	6	3	4					4	30
18.5	6	6	1	4					4	30
18.5	12	20	2				27	9	27	68
18.5	10	12	3		13				13	52
18.4	8	12	3		11				11	44
18.4	6	12	2		8				8	36
18.4	8	6	3		5				5	38
18.4	6	12	3		8				8	36
18.3	10	12	3		13				13	52
18.3	8	12	3		11				11	44
18.3	6	12	3		8				8	36
18.3	6	12	3		8				8	36
18.3	6	12	3		8				8	36
18.2	6	12	3		8				8	36
18.2	6	12	3		8				8	36
16.6	6	12	1		8				8	36
16.6	6	12	2		8				8	36
16.6	6	12	3		8				8	36
16.3	12	12	3			16			16	60
16.2	6	6	3	4					4	30
15.1	12	10	3		13				13	58
6.5	8	12	1		11				11	44
6.4	8	12	1		11				11	44
6.4	6	6	2	4					4	30
6.4	6	6	2	4					4	30
6.4	6	6	2	4					4	30
6.4	6	6	2	4					4	30
6.4	6	12	1		8				8	36
6.1	6	60	2				40	29	40	84
6.1	8	12	1		11				11	44
6.1	6	60	2				40	29	40	84
6.1	6	6	2	4					4	30
6.1	6	10	2		7				7	34
6.1	6	6	3	4					4	30
6.1	6	12	2		8				8	36
SOUTHBOUND SUB-TOTAL				68	455	48	207	130	778	3247

PATCHING SCHEDULE - SUMMARY

	CLASS A PATCHES, TYPE I, 10 INCH	CLASS A PATCHES, TYPE II, 10 INCH	CLASS A PATCHES, TYPE III, 10 INCH	CLASS A PATCHES, TYPE IV, 10 INCH	TIE BARS 3/4"	PATCHING REINFORCEMENT	SAW CUTS
	SQ YD	SQ YD	SQ YD	SQ YD	EACH	SQ YD	FOOT
NORTHBOUND TOTAL	24	709	52	293	106	1079	4275
SOUTHBOUND TOTAL	348	800	157	247	225	1553	7379
TOTAL	372	1509	209	541	331	2631	11654
15% ALLOWANCE FOR FAILURES	56	227	32	82	50	395	1749
GRAND TOTAL	428	1736	241	623	381	3026	13403