

| F.A.S. RTE. | SECTION | COUNTY | TOTAL SHEETS | SHEET NO. |
|-----------------------------|-------------------------|--------|--------------|-----------|
| 960 | 39RS-8, 40RS-10, 41RS-6 | MASSAC | 38 | 1 |
| ILLINOIS CONTRACT NO. 78219 | | | | |

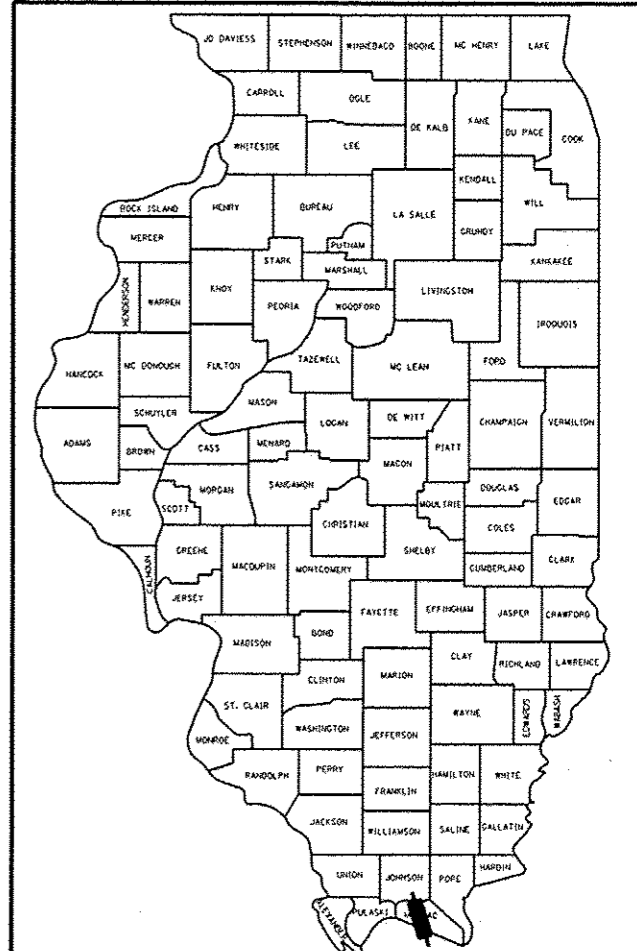
STATE OF ILLINOIS
DEPARTMENT OF TRANSPORTATION
DIVISION OF HIGHWAYS

PROPOSED
HIGHWAY PLANS

ROUTE FAS 960 (US 45)
SECTION 39RS-8, 40RS-10, 41RS-6
MASSAC COUNTY
3P RESURFACING

C-99-078-10
RS-M-0005 (920)

D-99-075-10

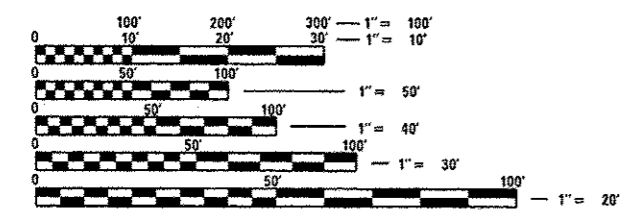


LOCATION OF SECTION INDICATED THIS: —

FOR INDEX OF SHEETS, SEE SHEET NO. 3
ADT FOR US 45:
RURAL LOCATION - 2013
ADT = 4600
PV = 4040
MU = 160
SU = 400
TRUCK = 3.5%

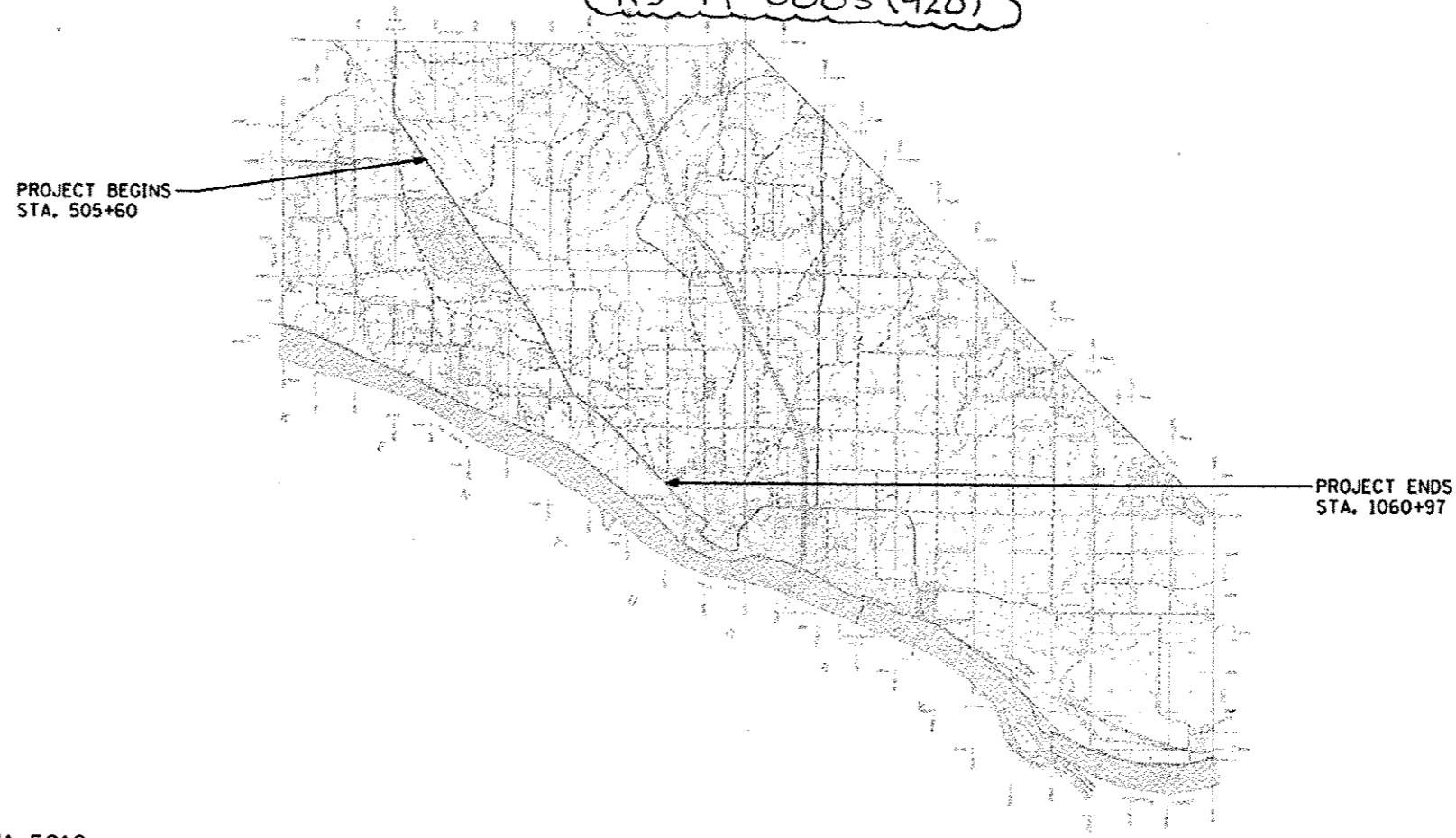
EXISTING EQUATION STATIONS:
EQ. STA. 582+58.7 (BK.) = STA. 582+50.0 (AH.)
EQ. STA. 794+00.8 (BK.) = STA. 794+05.2 (AH.)
EQ. STA. 941+37.6 (BK.) = STA. 938+68.3 (AH.)
EQ. STA. 1008+78.6 (BK.) = STA. 1008+79.2 (AH.)
EQ. STA. 1021+58.9 (BK.) = STA. 1021+59.5 (AH.)

TOWNSHIPS: JOPPA AND METROPOLIS



FULL SIZE PLANS HAVE BEEN PREPARED USING STANDARD ENGINEERING SCALES. REDUCED SIZED PLANS WILL NOT CONFORM TO STANDARD SCALES. IN MAKING MEASUREMENTS ON REDUCED PLANS, THE ABOVE SCALES MAY BE USED.

J.U.L.I.E.
JOINT UTILITY LOCATION INFORMATION FOR EXCAVATION
1-800-892-0123
OR 811



PROJECT ENGINEER Charles Stein (618)351-5210
PROJECT MANAGER Brandy Maes (618)351-5292

CONTRACT NO. 78219

GROSS LENGTH = 55809 FT. = 10.6 MILE
NET LENGTH = 55633 FT. = 10.5 MILE

STATE OF ILLINOIS
DEPARTMENT OF TRANSPORTATION
DIVISION OF HIGHWAYS

SUBMITTED March 18 2014
Jeffrey A. Keim
DEPUTY DIRECTOR OF HIGHWAYS, REGION ENGINEER

May 9 2014
John D. Bararelli, P.E.
ENGINEER OF DESIGN AND ENVIRONMENT

May 9 2014
Omer Osman, P.E.
DIRECTOR OF HIGHWAYS, CHIEF ENGINEER

PRINTED BY THE AUTHORITY
OF THE STATE OF ILLINOIS

△ REVISED 6-10-14