

STATE OF ILLINOIS  
DEPARTMENT OF TRANSPORTATION  
DIVISION OF HIGHWAYS

**PROPOSED  
HIGHWAY PLANS**

VARIOUS ROUTES  
SECTION D9 SAFETY 2014-2  
PROJECT ACHSIP-0005(994)  
CURVE SAFETY IMPROVEMENTS  
VARIOUS COUNTIES

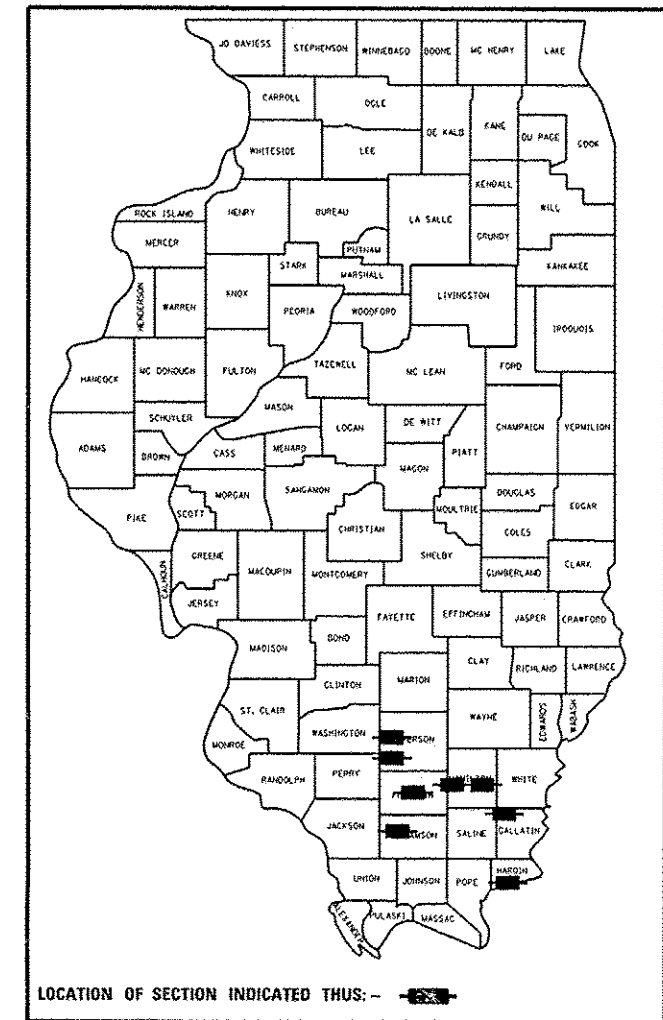
C-99-020-14

FOR INDEX OF SHEETS, SEE SHEET NO. 3

F.A. RTE.	SECTION	COUNTY	TOTAL SHEETS	SHEET NO.
*	D9 SAFETY 2014-2	**	17	1
		ILLINOIS	CONTRACT NO. 78396	

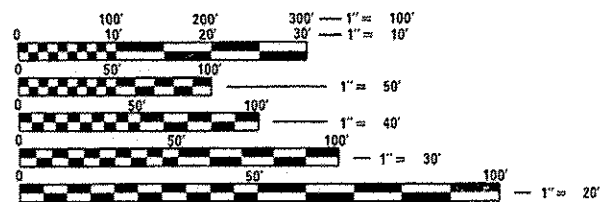
• VARIOUS ROUTES  
•• VARIOUS COUNTIES

D-99-016-14



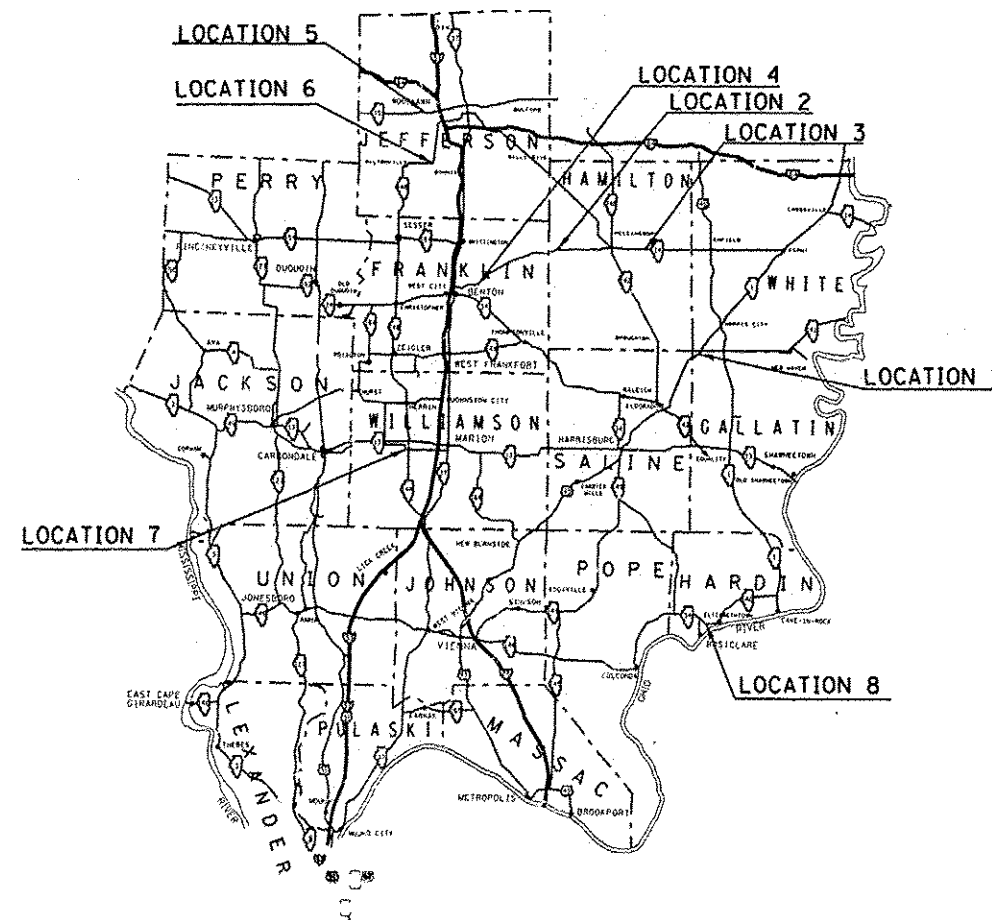
TOWNSHIPS & PRECINCTS:  
Precincts - Crab Orchard, East Rosiclare  
Townships - Shiloh, Benton, McClellan,  
Knight Prairie, McLeansboro, Omaha.

FOR EQUATION STATIONS, SEE  
LOCATION MAPS, SHEETS 11 - 13.



FULL SIZE PLANS HAVE BEEN PREPARED USING STANDARD  
ENGINEERING SCALES. REDUCED SIZED PLANS WILL NOT  
CONFORM TO STANDARD SCALES. IN MAKING MEASUREMENTS  
ON REDUCED PLANS, THE ABOVE SCALES MAY BE USED.

J.U.L.I.E.  
JOINT UTILITY LOCATION INFORMATION FOR EXCAVATION  
1-800-892-0123  
OR 811



PROJECT ENGINEER - Charles Stein (618) 351-5210  
PROJECT MANAGER - Kathi McCord (618) 351-5319

GROSS LENGTH = 47,758 FT. = 9.04 MILE  
NET LENGTH = 47,447 FT. = 8.98 MILE

CONTRACT NO. 78396

STATE OF ILLINOIS  
DEPARTMENT OF TRANSPORTATION  
DIVISION OF HIGHWAYS

SUBMITTED March 18 20 14

Jeffrey D. Keen  
DEPUTY DIRECTOR OF HIGHWAYS, REGION ENGINEER

May 9 20 14  
John D. Baranzelli P.E.  
ENGINEER OF DESIGN AND ENVIRONMENT

May 9 20 14  
Omur Osman P.E.  
DIRECTOR OF HIGHWAYS, CHIEF ENGINEER

PRINTED BY THE AUTHORITY  
OF THE STATE OF ILLINOIS