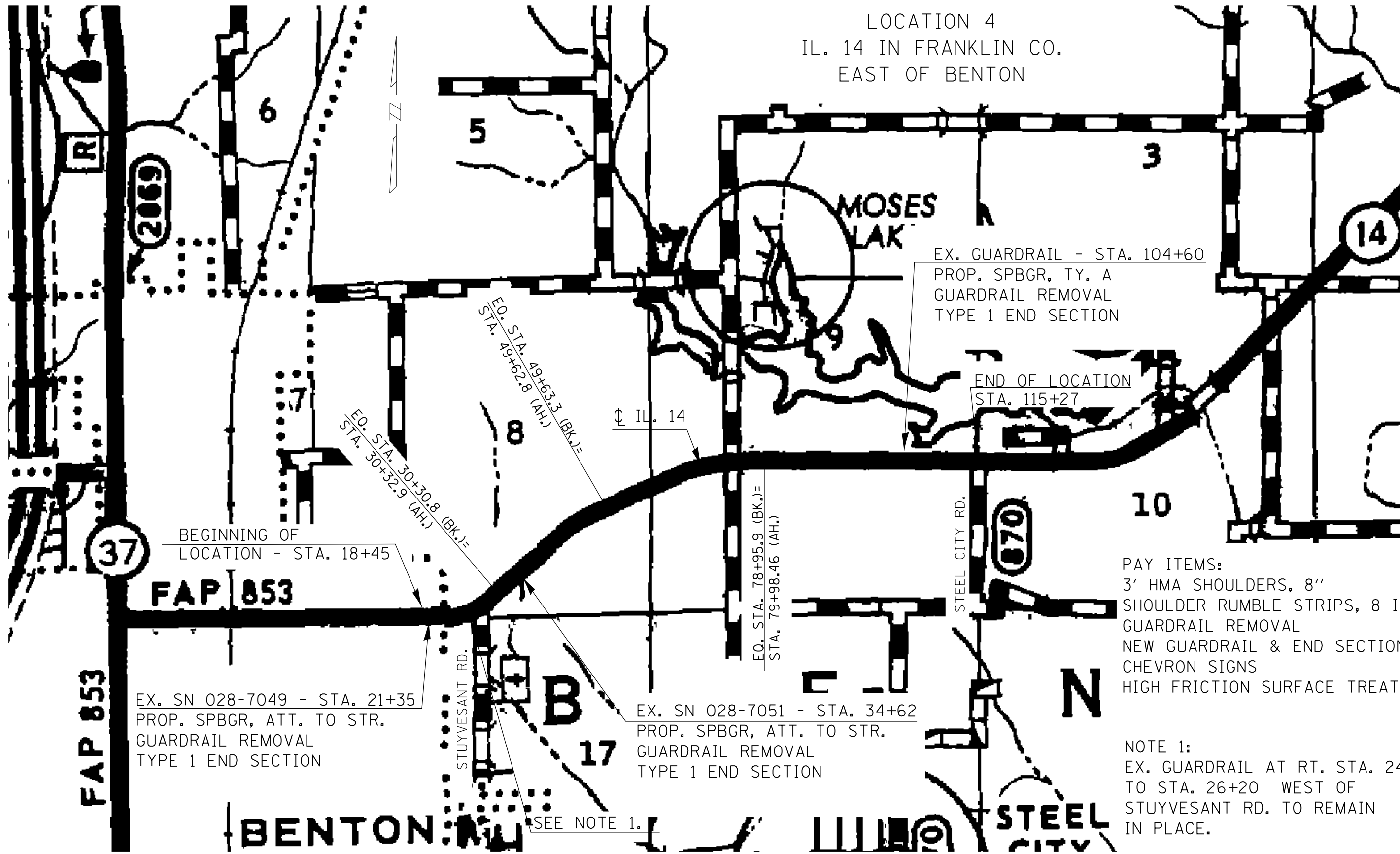


LOCATION 4
 IL. 14 IN FRANKLIN CO.
 EAST OF BENTON



EX. GUARDRAIL - STA. 104+60
 PROP. SPBGR, TY. A
 GUARDRAIL REMOVAL
 TYPE 1 END SECTION

END OF LOCATION
 STA. 115+27

BEGINNING OF
 LOCATION - STA. 18+45

FAP 853

EX. SN 028-7049 - STA. 21+35
 PROP. SPBGR, ATT. TO STR.
 GUARDRAIL REMOVAL
 TYPE 1 END SECTION

EX. SN 028-7051 - STA. 34+62
 PROP. SPBGR, ATT. TO STR.
 GUARDRAIL REMOVAL
 TYPE 1 END SECTION

PAY ITEMS:
 3' HMA SHOULDERS, 8"
 SHOULDER RUMBLE STRIPS, 8 INCH
 GUARDRAIL REMOVAL
 NEW GUARDRAIL & END SECTIONS
 CHEVRON SIGNS
 HIGH FRICTION SURFACE TREATMENT

NOTE 1:
 EX. GUARDRAIL AT RT. STA. 24+92
 TO STA. 26+20 WEST OF
 STUYVESANT RD. TO REMAIN
 IN PLACE.

SEE NOTE 1.

• VARIOUS ROUTES
 •• VARIOUS COUNTIES

FILE NAME = c:\pwwork\pwwork\mccordkr\0371602\78396-sh1-plan.dgn	USER NAME = mccordkr	DESIGNED -	REVISED -	STATE OF ILLINOIS DEPARTMENT OF TRANSPORTATION	LOCATION MAPS- SHEET 2				F.A. RTÉ.	SECTION	COUNTY	TOTAL SHEETS	SHEET NO.	
	PLOT SCALE = 100.0000' / in.	DRAWN -	REVISED -		SCALE:	SHEET	OF	SHEETS	STA.	TO	STA.	•	D9 SAFETY 2014-2	••
Default	PLOT DATE = 3/20/2014	CHECKED -	REVISED -						CONTRACT NO. 78396					
												ILLINOIS FED. AID PROJECT		