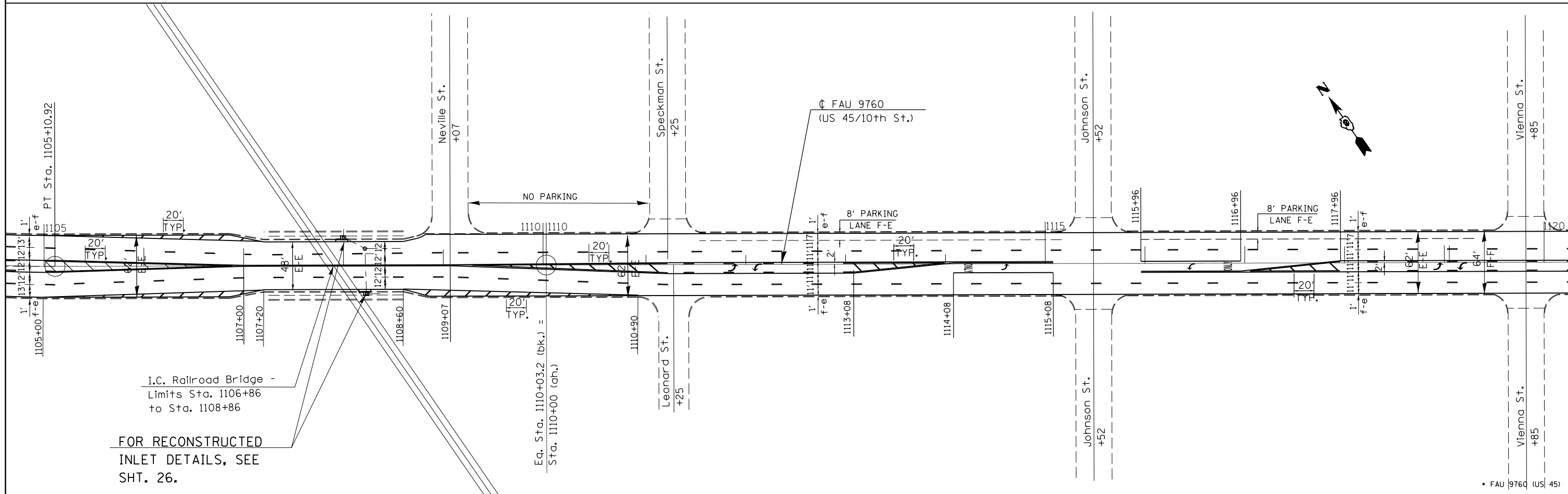
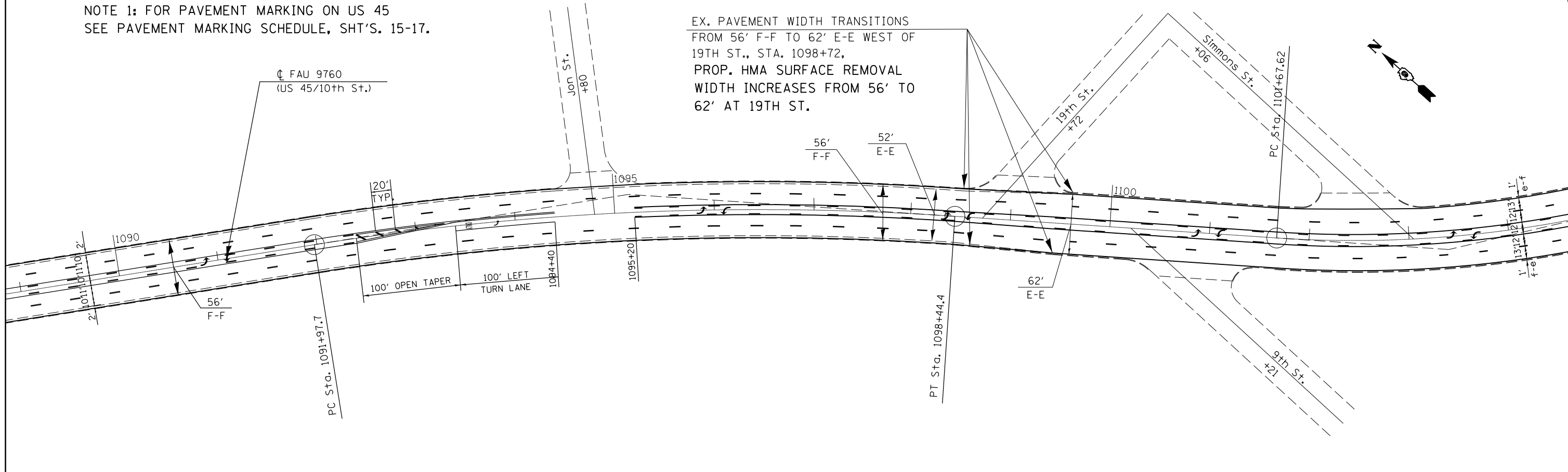


NOTE 1: FOR PAVEMENT MARKING ON US 45
SEE PAVEMENT MARKING SCHEDULE, SHT'S. 15-17.

EX. PAVEMENT WIDTH TRANSITIONS
FROM 56' F-F TO 62' E-E WEST OF
19TH ST., STA. 1098+72,
PROP. HMA SURFACE REMOVAL
WIDTH INCREASES FROM 56' TO
62' AT 19TH ST.



I.C. Railroad Bridge -
Limits Sta. 1106+86
to Sta. 1108+86

FOR RECONSTRUCTED
INLET DETAILS, SEE
SHT. 26.

Eg. Sta. 1110+03.2 (bk.) =
Sta. 1110+00 (ah.)

• FAU 9760 (US) 45

FILE NAME =	USER NAME = mccordkr	DESIGNED -	REVISED -
c:\pwwork\pwwork\mccordkr\ad0381606\78404\24-sh1-plan.dgn		DRAWN -	REVISED -
	PLOT SCALE = 100.0000' / in.	CHECKED -	REVISED -
	PLOT DATE = 3/19/2014	DATE -	REVISED -

STATE OF ILLINOIS
DEPARTMENT OF TRANSPORTATION

PLAN SHEET - STA. 1089+00 TO STA. 1120+33

SCALE: SHEET NO. OF SHEETS STA. TO STA.

F.A. RTE.	SECTION	COUNTY	TOTAL SHEETS	SHEET NO.
	41RS-7	MASSAC	29	19
CONTRACT NO. 78404				
ILLINOIS FED. AID PROJECT				