

06-13-14 LETTING ITEM 153

FOR INDEX OF SHEETS, SEE SHEET NO. 3

ADT FOR US 45:

URBAN LOCATION - 2013

ADT = 9700

PV = 9085

MU = 190

SU = 425

TRUCK = 6.3%

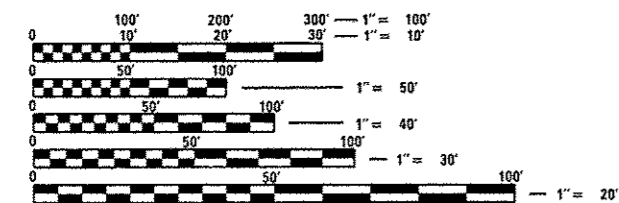
EXISTING EQUATION STATIONS:

EQ. STA. 1110+03.2 (BK.) =

STA. 1110+00 (AH.)

MILLING OMISSION: STATION 1131+26 TO
STA. 1134+47 (AT 10TH ST. & MARKET ST.)

PRECINCT: METROPOLIS



FULL SIZE PLANS HAVE BEEN PREPARED USING STANDARD ENGINEERING SCALES. REDUCED SIZED PLANS WILL NOT CONFORM TO STANDARD SCALES. IN MAKING MEASUREMENTS ON REDUCED PLANS, THE ABOVE SCALES MAY BE USED.

J.U.L.I.E.
JOINT UTILITY LOCATION INFORMATION FOR EXCAVATION
1-800-892-0123
OR 811

PROJECT ENGINEER Charles Stein (618)351-5210

PROJECT MANAGER Kathi McCord (618)351-5319

CONTRACT NO. 78404

STATE OF ILLINOIS

DEPARTMENT OF TRANSPORTATION

DIVISION OF HIGHWAYS

PROPOSED HIGHWAY PLANS

ROUTE FAU 9760 (US 45)

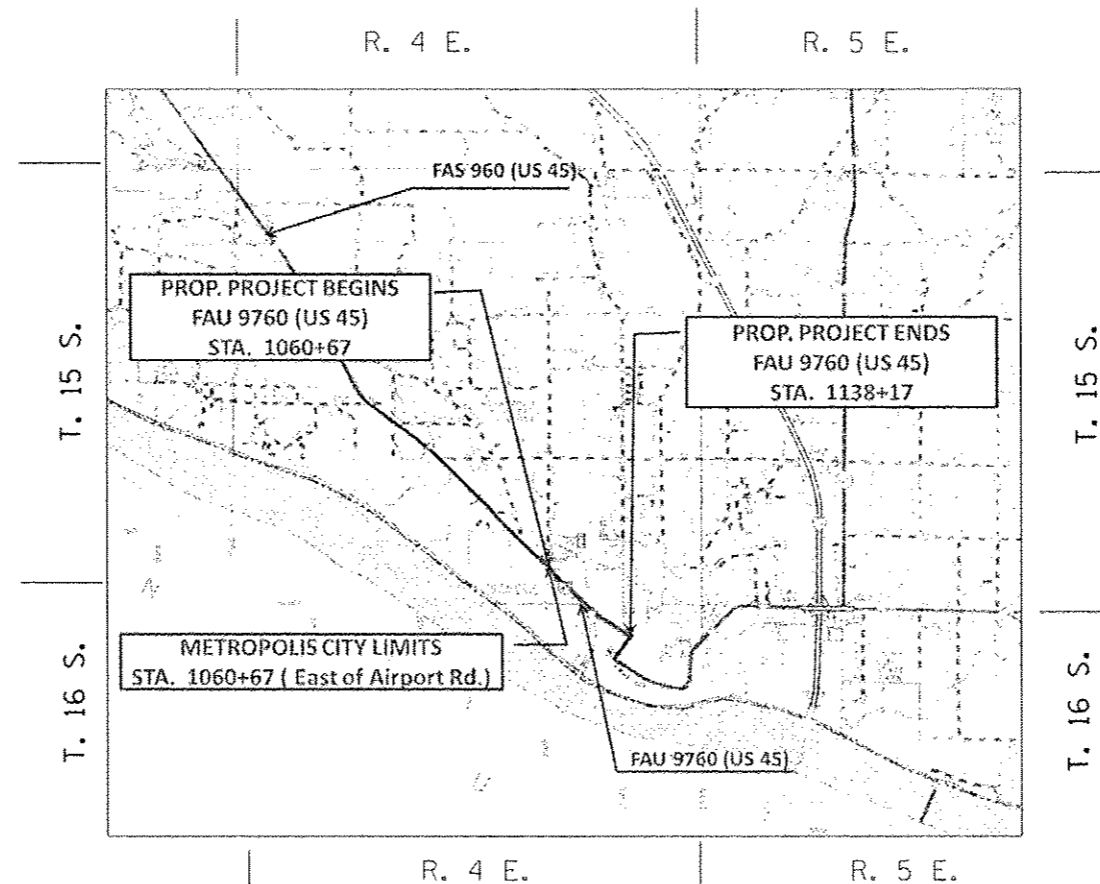
SECTION 41RS-7

MASSAC COUNTY

3P RESURFACING

C-99-028-14

PROJECT: ACF-9760(001)



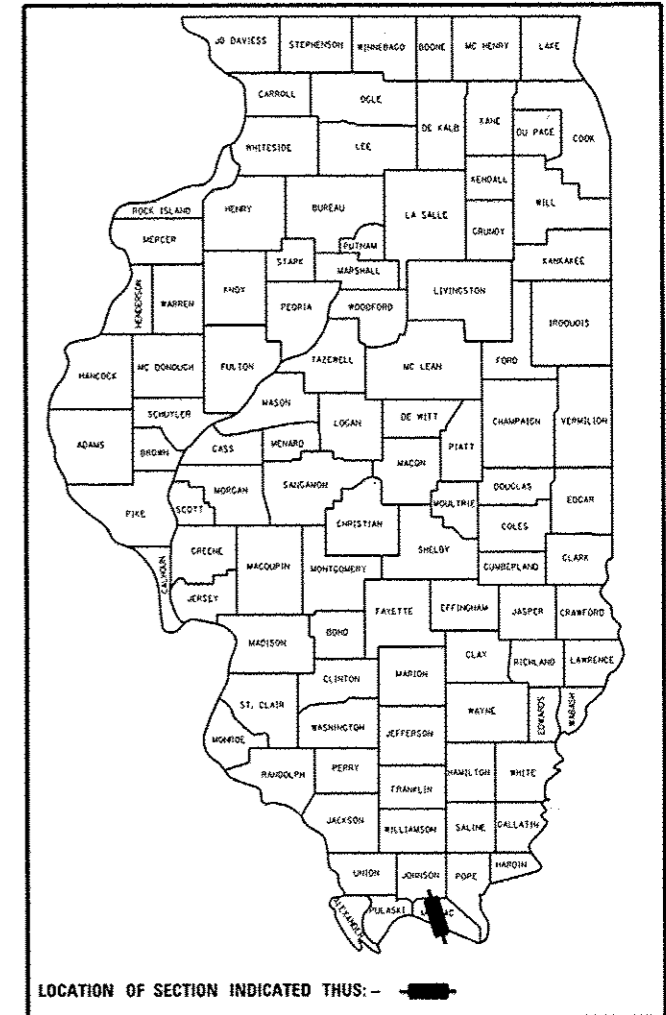
GROSS LENGTH = 7753 FT. = 1.46 MILE

NET LENGTH = 7753 FT. = 1.46 MILE

F.A. RTE.	SECTION	COUNTY	TOTAL SHEETS	SHEET NO.
41RS-7	41RS-7	MASSAC	27	1
ILLINOIS CONTRACT NO. 78404				

FAU 9760 (US 45)

D-99-024-14



STATE OF ILLINOIS
DEPARTMENT OF TRANSPORTATION
DIVISION OF HIGHWAYS

SUBMITTED *March 19 20 2014*

Jeffrey L. Keenan
DEPUTY DIRECTOR OF HIGHWAYS, REGION ENGINEER

May 9 20 14
John D. Baranzelli, PE
ENGINEER OF DESIGN AND ENVIRONMENT

May 9 20 14
Orhan Osman, PE
DIRECTOR OF HIGHWAYS, CHIEF ENGINEER

PRINTED BY THE AUTHORITY
OF THE STATE OF ILLINOIS

Prepared By: *Joe Blawie*
DISTRICT STUDIES & PLANS ENGINEER

Examined By: *[Signature]*
DISTRICT LAND ACQUISITION ENGINEER

Examined By: *Carrin Nelson*
DISTRICT PROGRAM DEVELOPMENT ENGINEER

Examined By: *Keel Kelly*
DISTRICT OPERATIONS ENGINEER

Examined By: *[Signature]*
DISTRICT PROJECT IMPLEMENTATION ENGINEER

Examined By: *Daryl J. Hubert*
DISTRICT CONSTRUCTION ENGINEER

Examined By: *Bruce W. Peoples*
DISTRICT MATERIALS ENGINEER

*FAU 9760 (US 45)

FILE NAME *	USER NAME * mcoardkr	DESIGNED -	REVISED -
c:\pwork\pwork\mcoardkr\d8301606\7844-shr-plandgn		DRAWN -	REVISED -
	PLOT SCALE * 100.0000' / 1"	CHECKED -	REVISED -
	PLOT DATE * 2/25/2014	DATE -	REVISED -

STATE OF ILLINOIS
DEPARTMENT OF TRANSPORTATION

SIGNATURE SHEET

SCALE: _____ SHEET NO. _____ OF _____ SHEETS STA. _____ TO STA. _____

F.A. RTE.	SECTION	COUNTY	TOTAL SHEETS	SHEET NO.
*	41RS-7	Mossoc	29	2
CONTRACT NO. 78404			ILLINOIS FED. AID PROJECT	

INDEX OF SHEETS

SHEET NO.	DESCRIPTION
1	Cover Sheet
2	Signature Sheet
3	Index of Sheets, Standards & Mixture Requirements
4	General Notes & Agreements
5-6	Summary Of Quantities
7-13	Typical Sections for FAU 9760 (Urban US 45)
14	Resurfacing Schedules
15-17	Pavement Marking Schedules
18-20	Plan Sheets
21	US 45/Market St. Intersection Detail
22	US 45/Ferry St. Intersection Detail
23	Detail: Class B Patches (Special)
24	Details: Butt Joints and Milling Transitions
25	Details: Side Road and Entrances
26	Inlets To Be Constructed Details
27	Detail: Inlet, Special, Type 3 (For Reference Only)
28	Detail: Temporary Hot-Mix Asphalt Transitions
29	Details: Uneven Lanes Sign; Rough Grooved Surface Sign

STANDARDS

000001-06	701336-06
001001-02	701427-02
001006	701602-07
442101-07	701701-09
442201-03	701901-03
606001-05	780001-04
701011-04	781001-03
701301-04	886001-01
701306-03	886006-01
701311-03	

MIXTURE REQUIREMENTS

Location(s):	Hot-Mix Asphalt Surface Course; Incidental HMA Surfacing
Mixture Use(s):	Polymerized Hot-Mix Asphalt Surface Course, Mix. D, N90
AD/PG:	SBS PG76-22
RAP%(Max):	See Special Provisions
Design Air Voids:	4.0%, 90 Gyration Design
Mixture Composition: (Gradation Mixture)	IL-9.5mm
Friction Aggregate:	D Surface
Quality Management Program:	QCP

Location(s):	Hot-Mix Asphalt Leveling Binder Course
Mixture Use(s):	Polymerized Hot-Mix Asphalt Leveling Binder, N90, Fine Grade
AD/PG:	SBS PG76-22
RAP%(Max):	See Special Provisions
Design Air Voids:	4.0%, 90 Gyration Design
Mixture Composition: (Gradation Mixture)	IL-9.5mm Fine Grade
Friction Aggregate:	None
Quality Management Program:	QCP

Location(s):	Class D Patching
Mixture Use(s):	Hot-Mix Asphalt Binder Course, N90, IL-19.0mm Fine Grade
AD/PG:	PG64-22
RAP%(Max):	See Special Provisions
Design Air Voids:	4.0%, 90 Gyration Design
Mixture Composition: (Gradation Mixture)	IL-19.0mm Fine Grade
Friction Aggregate:	None
Quality Management Program:	QC/QA

• FAU 9760 (US 45)

FILE NAME: c:\pr\work\p\d\mccorak\d0381606\784	USER NAME: mcaorak	DESIGNED: -	REVISED: -	STATE OF ILLINOIS DEPARTMENT OF TRANSPORTATION	INDEX OF SHEETS, MIXTURE REQUIREMENTS	F.A. RTE.:	SECTION:	COUNTY:	TOTAL SHEETS:	SHEET NO.:
c:\pr\work\p\d\mccorak\d0381606\784	mcaorak	DRAWN: -	REVISED: -			41RS-7	Mgssoc	29	3	CONTRACT NO. 78404
PLOT SCALE: 1/8" = 1'-0"	CHECKED: -	REVISED: -	REVISED: -		SCALE: SHEET NO. OF SHEETS STA. TO STA.	ILLINOIS FED. AID PROJECT				
PLOT DATE: 3/19/2014	DATE: -	REVISED: -	REVISED: -							

GENERAL NOTES

THE THICKNESS OF HOT MIX ASPHALT MIXTURE SHOWN ON THE PLANS IS THE NOMINAL THICKNESS. DEVIATIONS FROM THE NOMINAL THICKNESS WILL BE PERMITTED WHEN SUCH DEVIATIONS OCCUR DUE TO IRREGULARITIES IN THE EXISTING SURFACE OR BASE ON WHICH THE HOT MIX ASPHALT MIXTURE IS PLACED.

FACTORS USED FOR ESTIMATING PLAN QUANTITIES ARE AS FOLLOWS AND SHALL NOT BE USED FOR THE BASIS OF FINAL QUANTITIES:

ALL HOT MIX ASPHALT	2.016 TONS/CU. YD.
ALL AGGREGATE	2.05 TONS/CU. YD.
BITUMINOUS MATERIALS:	
ON PAVEMENT	0.09 GAL./SQ. YD.
ON AGGREGATE SURFACE	0.32 GAL./SQ. YD.
AGGREGATE (PRIME COAT)	0.0015 TONS/SQ. YD.

AT ALL LOCATIONS WHERE THE PROPOSED HOT MIX ASPHALT OR CONCRETE PAVEMENT JOINS AN EXISTING HOT MIX ASPHALT OR CONCRETE PAVEMENT, A FULL DEPTH SAWED JOINT SHALL BE CONSTRUCTED. THE COST OF THIS JOINT WILL BE INCLUDED IN THE COST OF THE TYPE OF PAVEMENT BEING CONSTRUCTED.

IN THE TWO-LANE PAVEMENT SECTION, THE CONTRACTOR SHALL STAMP STATIONING IN THE PROPOSED HOT MIX ASPHALT SURFACE AT 100 m (300 FT.) INTERVALS ON ALTERNATING SIDES OF THE PAVEMENT AND AS DIRECTED BY THE ENGINEER. THE STATION SYMBOL STAMPS USED SHALL BE FURNISHED BY THE CONTRACTOR. THEY SHALL BE 140 mm (5 IN.) TALL, OF A DESIGN APPROVED BY THE ENGINEER, AND SHALL REMAIN THE PROPERTY OF THE CONTRACTOR.

IN THE MULTI-LANE PAVEMENT SECTION, THE CONTRACTOR SHALL STAMP STATIONING IN THE PROPOSED HOT MIX ASPHALT SURFACE AT 100 m (300 FT.) INTERVALS ON BOTH OUTSIDE EDGES OF THE PAVEMENT AND AS DIRECTED BY THE ENGINEER. THE STATION SYMBOL STAMPS USED SHALL BE FURNISHED BY THE CONTRACTOR. THEY SHALL BE 140 mm (5 IN.) TALL, OF A DESIGN APPROVED BY THE ENGINEER, AND SHALL REMAIN THE PROPERTY OF THE CONTRACTOR.

THE QUANTITIES SHOWN IN THE PLANS FOR PATCHING ARE ESTIMATES. THE ACTUAL AMOUNT OF PATCHING REQUIRED SHALL BE DETERMINED BY THE ENGINEER IN THE FIELD. PATCHING SURVEY WAS DONE APRIL 4, 2011.

THE QUANTITY OF SHORT-TERM PAVEMENT MARKING SHOWN IN THE PLANS IS BASED ON ONE APPLICATION EACH FOR THE HMA SURFACE REMOVAL, SURFACE COURSE, AND BINDER COURSE.

BITUMINOUS RESURFACING SHALL BE PLACED IN A SEQUENCE THAT WILL MINIMIZE THE TIME THE CENTERLINE EDGE IS EXPOSED TO TRAFFIC. WHEN AT THE END OF A DAY'S OPERATION THE EXPOSED CENTERLINE EDGE IS GREATER THAN 600 METERS (2,000 FT.), THE CONTRACTOR SHALL BE REQUIRED TO PAVE IN THE ADJACENT LANE ON THE FOLLOWING WORK DAY.

THE QUANTITY FOR PRIME COAT WAS CALCULATED IN TWO LAYERS, ONE APPLICATION AFTER MILLING THE EXISTING SURFACE AND ONE APPLICATION AFTER PLACING THE BINDER COURSE AND SHALL BE USED AS DIRECTED BY THE ENGINEER.

ALL DETECTOR LOOP CORNERS SHALL BE CORE DRILLED 5.08 cm (2 IN.) MINIMUM DIAMETER EXCEPT THOSE PLACED UNDER RESURFACING. THE DETECTOR LOOP CORNERS PLACED UNDER RESURFACING SHALL BE DIAGONALLY SAWCUT.

SAWED SLOTS FOR TWISTED PAIR ELECTRIC CABLES SHALL BE LARGER THAN SINGLE CONDUCTOR LOOP SLOTS.

THE LOCATION OF THE DETECTOR LOOPS, AS SHOWN ON THE PLANS, MAY BE ADJUSTED TO FIT FIELD CONDITIONS AS DIRECTED BY THE ENGINEER OF TRAFFIC OPERATIONS.

ALL DETECTOR LOOPS SHALL BE INSTALLED PRIOR TO RESURFACING.

THE CONTRACTOR SHALL NOTIFY THE ENGINEER OF TRAFFIC OPERATIONS 72 HOURS PRIOR TO THE SHUT-DOWN OR CUTTING OF EXISTING DETECTOR LOOPS.

THE FURNISHING AND INSTALLATION OF THE 3.18 cm (1 IN.) CONDUIT WITH ITS TRENCHING AND BACKFILL FROM THE LOOP SAWCUT TO THE SPLICE POINT SHALL BE INCLUDED IN THE LOOP INSTALLATION UNLESS SHOWN OTHERWISE ON THE PLANS.

THE INDUCTION LOOP WIRE AND LEAD-IN WIRE SHALL BE INSTALLED IN ACCORDANCE WITH THE MANUFACTURER'S RECOMMENDATION.

COMMITMENTS:

AGREEMENT WITH THE CITY OF METROPOLIS.

* FAU 9760 (US 45)

FILE NAME =	USER NAME = mcoordr	DESIGNED -	REVISED -	STATE OF ILLINOIS DEPARTMENT OF TRANSPORTATION	GENERAL NOTES AND AGREEMENTS	F.A.*	SECTION	COUNTY	TOTAL SHEET	SHEET	
c:\pwork\pwork\mcoordr\0381600\784	ahtr-plan.dgn	DRAWN -	REVISED -			*	4RS-7	Massac	29	4	
PLOT SCALE = 100.0000 1/16"		CHECKED -	REVISED -			CONTRACT NO. 78404					
PLOT DATE = 3/19/2011		DATE -	REVISED -			SCALE:	SHEET NO.	OF	SHEETS	STA.	TO STA.
						ILLINOIS FED. AID PROJECT					

SUMMARY OF QUANTITIES

1123111, 01		1123111, 02	
FAU 9760 (US 45)		FAU 9760 (US 45)	
URBAN		URBAN	
80% FED.; 20% STATE		80% FED.; 20% CITY	
RESURFACING		PARKING LANES	
MASSAC COUNTY			
CONST. CODE TYPE 0005			

CODE NUMBER	ITEM DESCRIPTION	UNIT	TOTAL QUANTITY	QUANTITY	QUANTITY
X4420676	CLASS B PATCHES, TYPE IV, 9 INCH (SPECIAL)	SQ YD	715	715	
X2503100	MOWING	UNITS	50	50	
X4060110	BITUMINOUS MATERIAL (PRIME COAT)	POUND	28478	27267	1211
X7801000	WET REFLECTIVE THERMOPLASTIC PAVEMENT MARKING - LETTERS AND SYMBOLS	SQ FT	765.5	765.5	
X7801004	WET REFLECTIVE THERMOPLASTIC PAVEMENT MARKING - LINE 4"	FOOT	24581	24581	
X7801006	WET REFLECTIVE THERMOPLASTIC PAVEMENT MARKING - LINE 6"	FOOT	390	390	
X7801012	WET REFLECTIVE THERMOPLASTIC PAVEMENT MARKING - LINE 12"	FOOT	460	460	
X7801024	WET REFLECTIVE THERMOPLASTIC PAVEMENT MARKING - LINE 24"	FOOT	100	100	
40600909	POLYMERIZED LEVELING BINDER (MACHINE METHOD), IL-9.5FG, N90	TON	1771	1695	76
40600982	HOT-MIX ASPHALT SURFACE REMOVAL - BUTT JOINT	SQ YD	87	87	
40600990	TEMPORARY RAMP	SQ YD	178	178	
40603545	POLYMERIZED HOT-MIX ASPHALT SURFACE COURSE, MIXTURE D, N90	TON	3555	3404	151
40800050	INCIDENTAL HOT-MIX ASPHALT SURFACING	TON	42	42	
44000152	HOT-MIX ASPHALT SURFACE REMOVAL 3/4"	SQ YD	7525	7525	
44000158	HOT-MIX ASPHALT SURFACE REMOVAL 2 1/4"	SQ YD	32316	30579	1737
44200956	CLASS B PATCHES, TYPE II, 9 INCH	SQ YD	266	266	
44201299	DOWELS 1 1/2"	EACH	757	757	
44201803	CLASS D PATCHES, TYPE II, 13 INCH	SQ YD	446	446	
44201807	CLASS D PATCHES, TYPE III, 13 INCH	SQ YD	103	103	
44213100	PAVEMENT FABRIC	SQ YD	715	715	
44213200	SAW CUTS	FOOT	5064	5064	

* SPECIALTY ITEM
 Non-Participating

FILE NAME: a:\work\p1\dat\mccordr\031626\784	USER NAME: mccordr	DESIGNED: -	REVISED: -	STATE OF ILLINOIS DEPARTMENT OF TRANSPORTATION	SUMMARY OF QUANTITIES				F.A. RTE.	SECTION	COUNTY	TOTAL SHEETS	SHEET NO.	
		DRAWN: -	REVISED: -		SCALE:	SHEET NO.	OF	SHEETS	STA.	TO STA.	Illinois	FED. AID PROJECT	29	5
		CHECKED: -	REVISED: -		CONTRACT NO. 78404									
		DATE: -	REVISED: -											

FAU 9760 (US 45)

SUMMARY OF QUANTITIES

FAU 9760 (US 45)	FAU 9760 (US 45)
URBAN	URBAN
80% FED. ; 20% STATE	80% FED. ; 20% CITY
RESURFACING	PARKING LANES
MASSAC COUNTY	
CONST. CODE TYPE 0005	

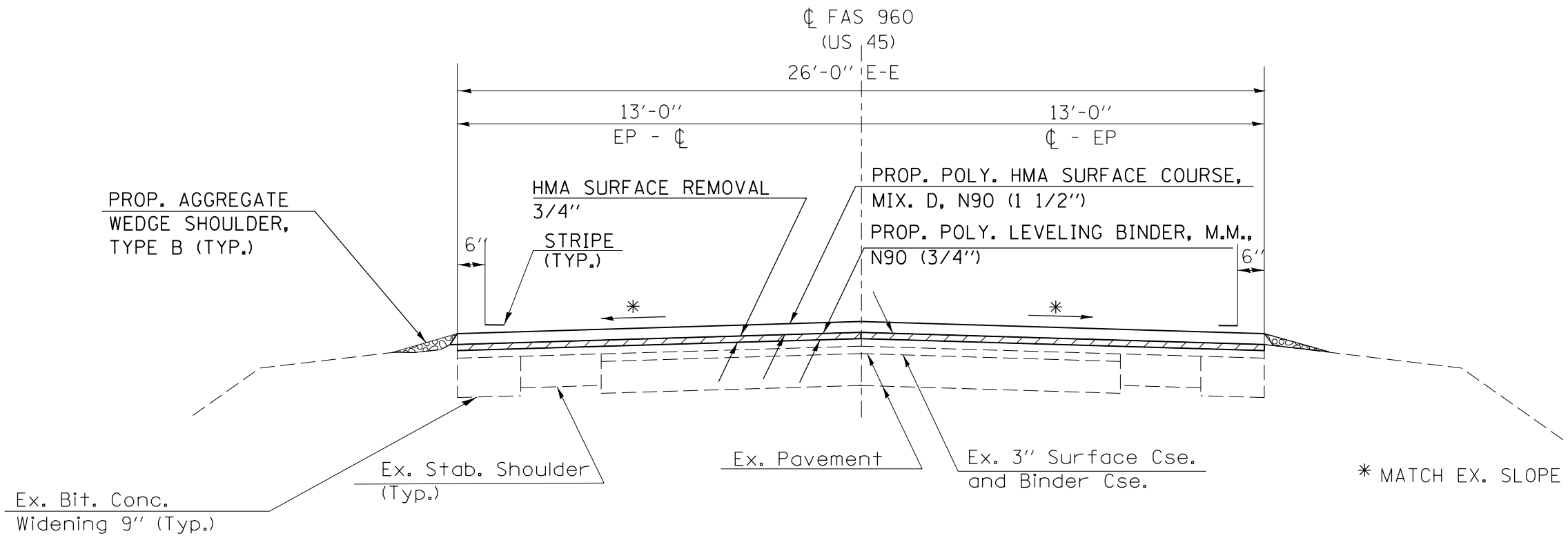
CODE NUMBER	ITEM DESCRIPTION	UNIT	TOTAL QUANTITY	QUANTITY	QUANTITY
44213204	TIE BARS 3/4"	EACH	1320	1320	
48102100	AGGREGATE WEDGE SHOULDER, TYPE B	TON	47	47	
60263100	INLETS TO BE RECONSTRUCTED WITH NEW TYPE 3 FRAME AND GRATE	EACH	2	2	
67000400	ENGINEER'S FIELD OFFICE, TYPE A	CAL MO	3	3.0	
67100100	MOBILIZATION	L SUM	1	1.0	
70100460	TRAFFIC CONTROL AND PROTECTION, STANDARD 700306	L SUM	1	1.0	
70100600	TRAFFIC CONTROL AND PROTECTION, STANDARD 701336	L SUM	1	1.0	
70102632	TRAFFIC CONTROL AND PROTECTION, STANDARD 701602	L SUM	1	1.0	
70102635	TRAFFIC CONTROL AND PROTECTION, STANDARD 701701	L SUM	1	1.0	
70106800	CHANGEABLE MESSAGE SIGN	CAL MO	3	3.0	
70300100	SHORT- TERM PAVEMENT MARKING	FOOT	2821	2821	
70300210	TEMPORARY PAVEMENT MARKING - LETTERS AND SYMBOLS	SQ FT	766	766	
70300220	TEMPORARY PAVEMENT MARKING, LINE 4"	FOOT	24581	24581	
70300240	TEMPORARY PAVEMENT MARKING, LINE 6"	FOOT	389	389	
70300260	TEMPORARY PAVEMENT MARKING, LINE 12"	FOOT	460	460	
70300280	TEMPORARY PAVEMENT MARKING, LINE 24"	FOOT	99	99	
70301000	WORK ZONE PAVEMENT MARKING REMOVAL	SQ FT	8858	8858	
* 78100100	RAISED REFLECTIVE PAVEMENT MARKER	EACH	568	568	
78300200	RAISED REFLECTIVE PAVEMENT MARKER REMOVAL	EACH	568	568	
* 88600100	DETECTOR LOOP, TYPE 1	FOOT	50	50	

* SPECIALTY ITEM

FILE NAME =	USER NAME = mcoordkr	DESIGNED -	REVISED -	STATE OF ILLINOIS DEPARTMENT OF TRANSPORTATION	SUMMARY OF QUANTITIES	F.A. RTE.	SECTION	COUNTY	TOTAL SHEETS	SHEET NO.	
cl:\p\work\p\idat\mcoordkr\0301626\78404	24-int-plan.dgn	DRAWN -	REVISED -			41RS-7	Massgc	29	6		
	PLOT SCALE = 1/8"=1'-0"	CHECKED -	REVISED -			CONTRACT NO. 78404					
	PLOT DATE = 3/19/2014	DATE -	REVISED -			ILLINOIS FED. AID PROJECT					

* FAU 9760 (US 45)

TYPICAL SECTION #1



TO BE USED:

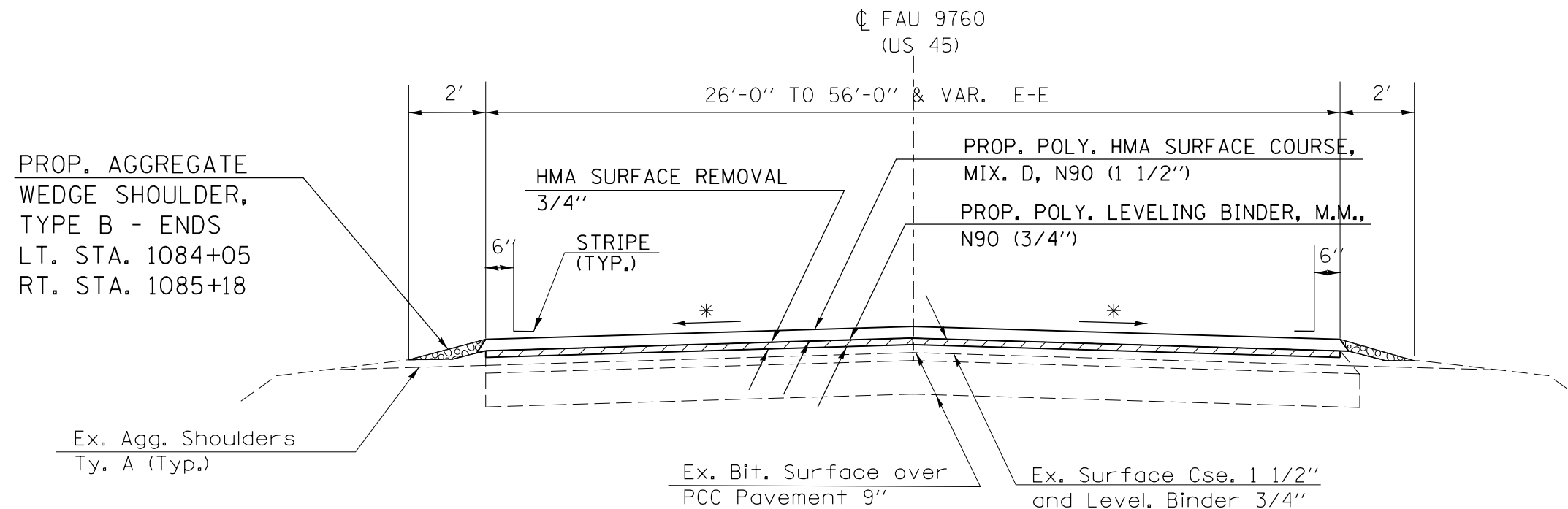
STA. 1060+67 TO STA. 1082+30 (NOTE 1)

NOTE 1: SEE PLANS SHEET 18 FOR TRANSITION DETAIL FROM 26' WIDE PAVEMENT TO 52' WIDE PAVEMENT, STA. 1082+30 TO STA. 1085+18.

• FAU 9760 (US 45)

FILE NAME =	USER NAME = mccordkr	DESIGNED -	REVISED -	STATE OF ILLINOIS DEPARTMENT OF TRANSPORTATION	TYPICAL SECTION #1			F.A. RTE.	SECTION	COUNTY	TOTAL SHEETS	SHEET NO.
et:\pwork\pwork\mccordkr\10381606\78404-sh1-plan.dgn		DRAWN -	REVISED -					•	41RS-7	Massac	29	7
PLOT SCALE = 100.0000' / in.		CHECKED -	REVISED -		CONTRACT NO. 78404			ILLINOIS FED. AID PROJECT				
PLOT DATE = 3/19/2014		DATE -	REVISED -		SCALE:	SHEET NO.	OF SHEETS	STA.	TO STA.			

TYPICAL SECTION #2



TO BE USED:
 RT. STA. 1082+30 TO STA. 1085+18
 LT. STA. 1082+30 TO STA. 1084+05

* MATCH EX. SLOPE

FILE NAME =	USER NAME = mccordkr	DESIGNED -	REVISED -
et:\pw\work\p1dot\mccordkr\ad0381606\78404-sh1-plan.dgn		DRAWN -	REVISED -
	PLOT SCALE = 100.0000' / in.	CHECKED -	REVISED -
	PLOT DATE = 3/19/2014	DATE -	REVISED -

STATE OF ILLINOIS
 DEPARTMENT OF TRANSPORTATION

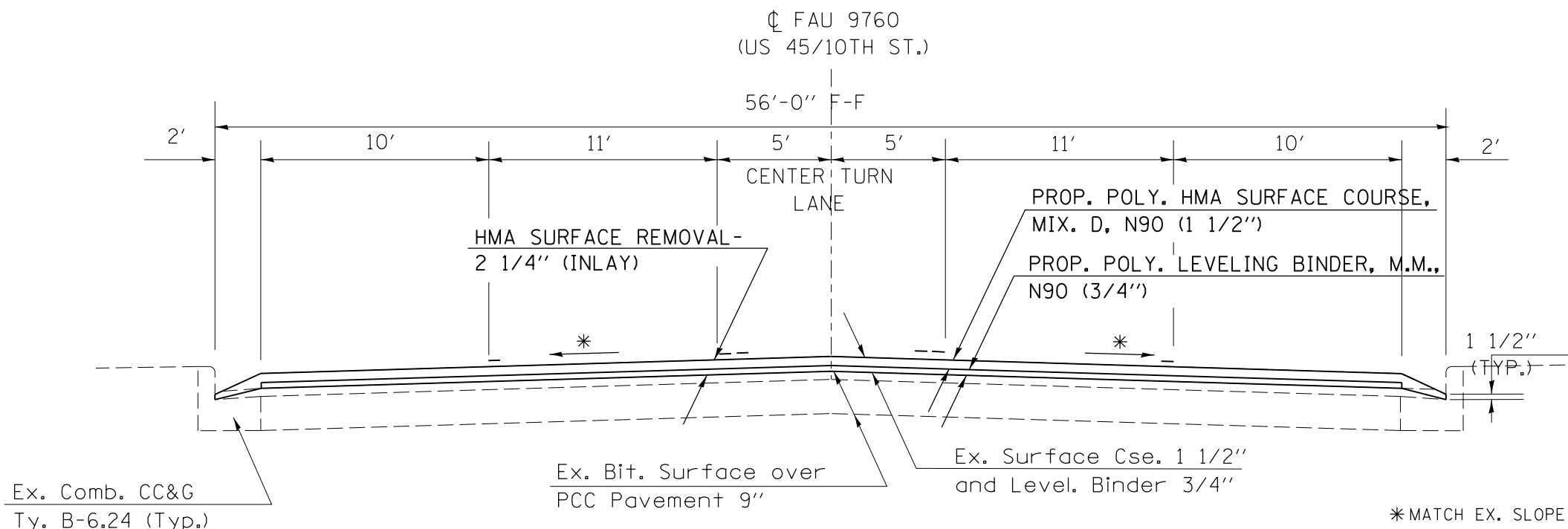
TYPICAL SECTION #2

SCALE: SHEET NO. OF SHEETS STA. TO STA.

F.A. RTE.	SECTION	COUNTY	TOTAL SHEETS	SHEET NO.
•	41RS-7	Massac	29	8
			CONTRACT NO. 78404	
ILLINOIS FED. AID PROJECT				

• FAU 9760 (US 45)

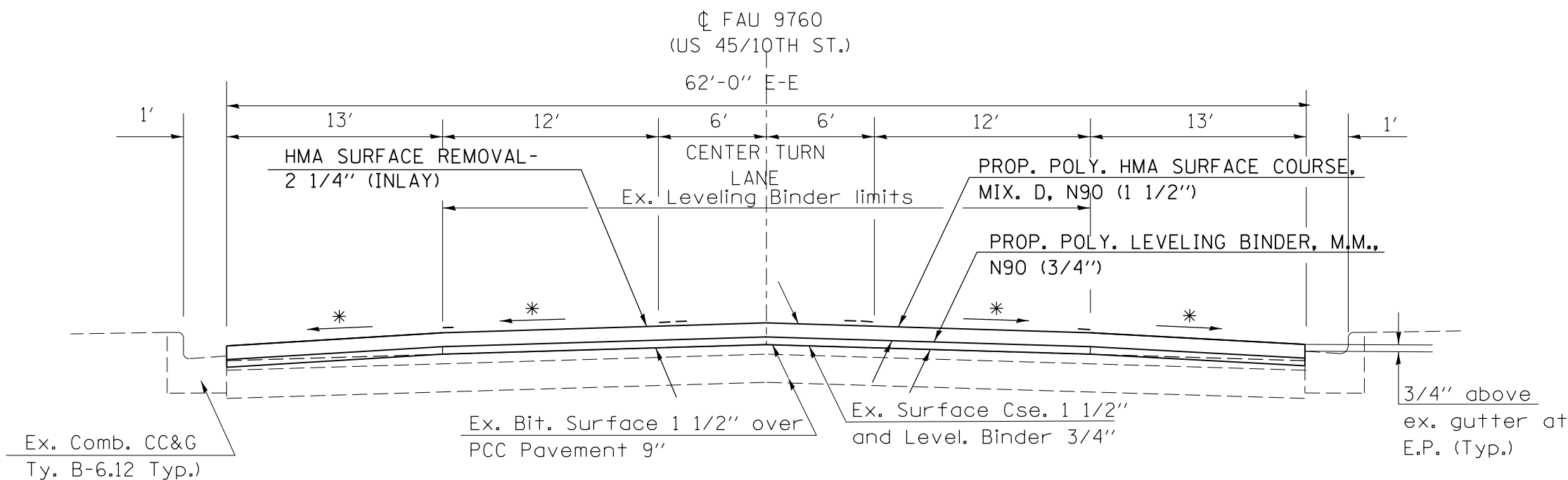
TYPICAL SECTION #3



TO BE USED:

RT. STA. 1085+18 TO RT. STA. 1098+72
 LT. STA. 1084+05 TO LT. STA. 1098+72

TYPICAL SECTION #4



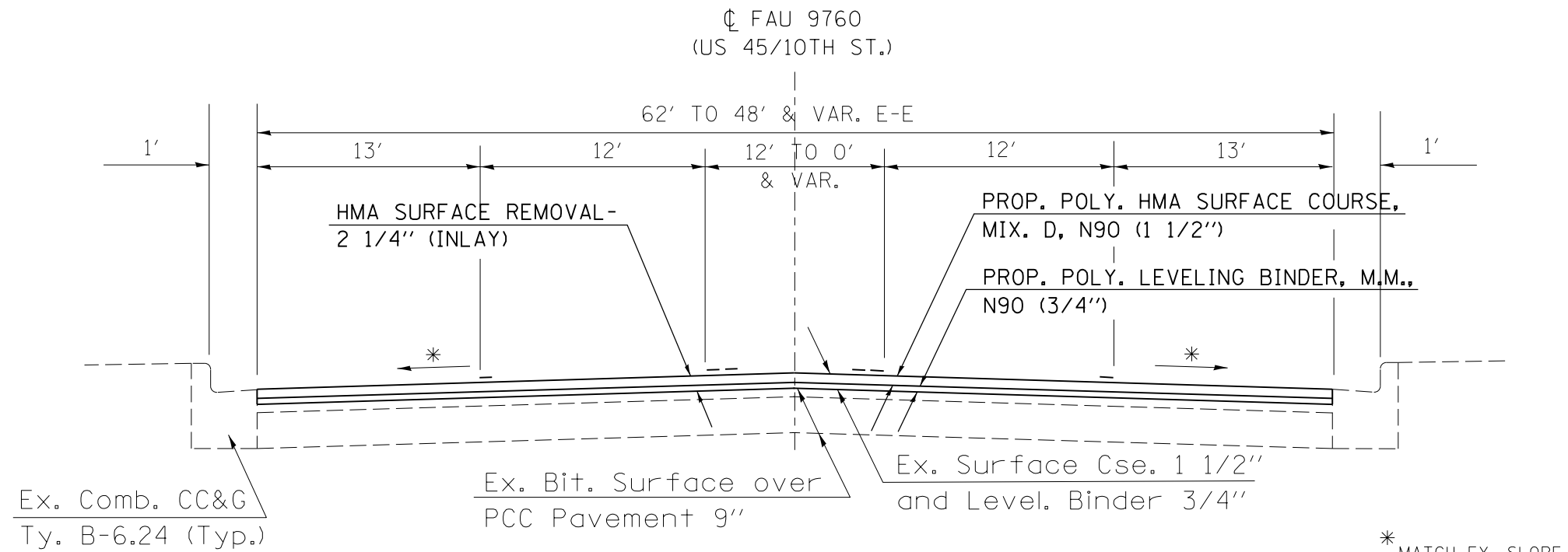
TO BE USED:

LT. & RT. STA. 1098+72 TO STA. 1105+20

• FAU 9760 (US 45)

FILE NAME =	USER NAME = mccordkr	DESIGNED -	REVISED -	STATE OF ILLINOIS DEPARTMENT OF TRANSPORTATION	TYPICAL SECTIONS #3 & #4			F.A. RTE.	SECTION	COUNTY	TOTAL SHEETS	SHEET NO.
et:\pw\work\p1dot\mccordkr\ad0381606\78404-sh1-plan.dgn		DRAWN -	REVISED -					•	41RS-7	Massac	29	9
PLOT SCALE = 100.0000' / in.		CHECKED -	REVISED -		SCALE: SHEET NO. OF SHEETS STA. TO STA.			CONTRACT NO. 78404				
PLOT DATE = 3/19/2014		DATE -	REVISED -		ILLINOIS FED. AID PROJECT							

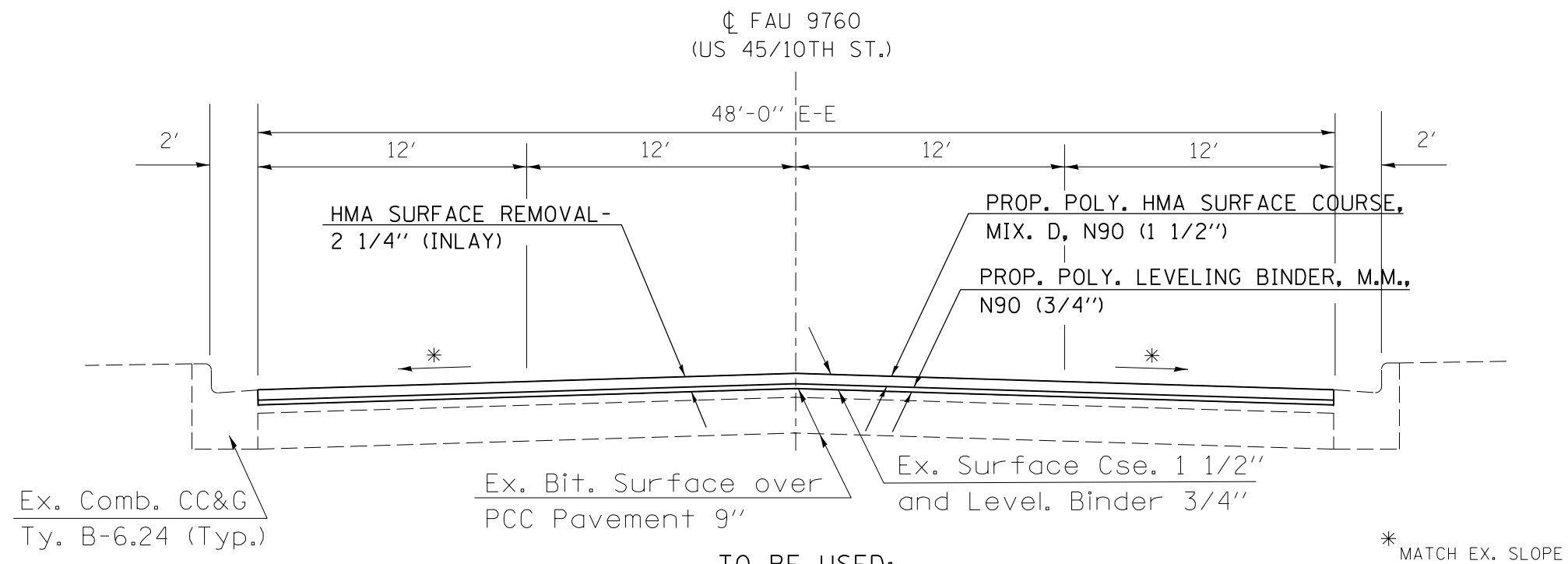
TYPICAL SECTION #5



TO BE USED:

LT. & RT. STA. 1105+20 TO STA. 1107+00

TYPICAL SECTION #6



TO BE USED:

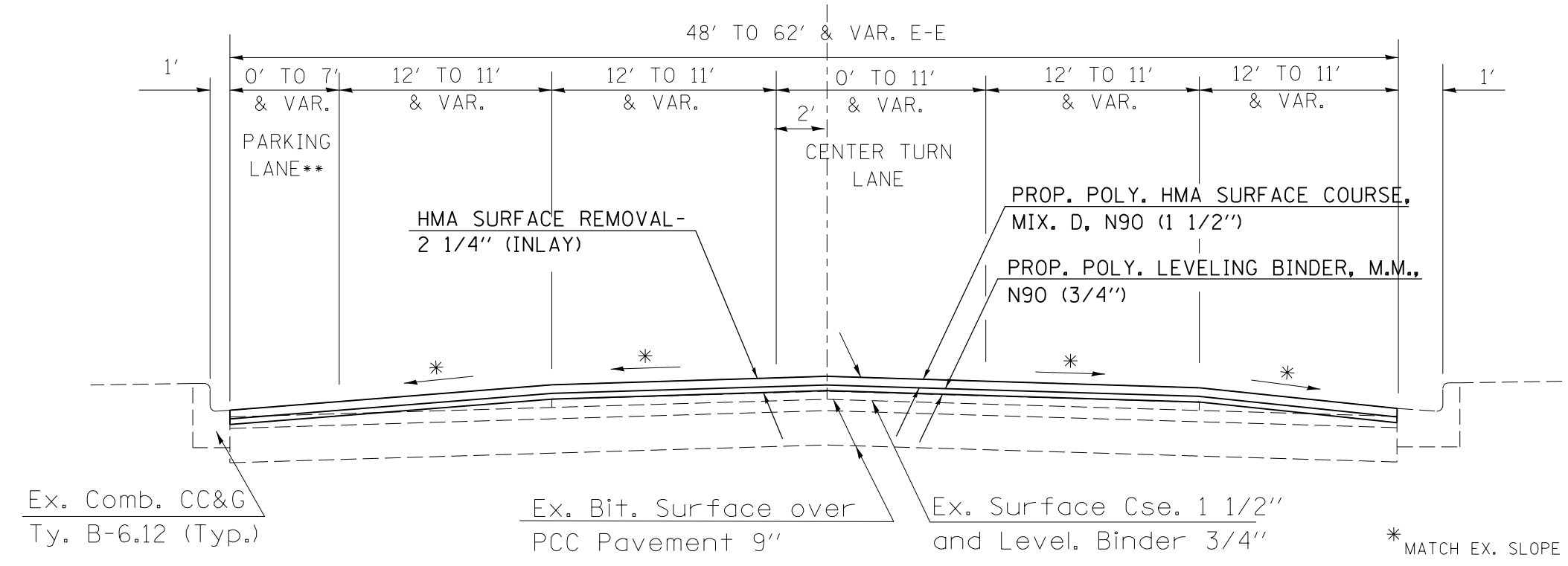
LT. & RT. STA. 1107+00 TO STA. 1109+07

• FAU 9760 (US 45)

FILE NAME =	USER NAME = mccordkr	DESIGNED -	REVISED -	STATE OF ILLINOIS DEPARTMENT OF TRANSPORTATION	TYPICAL SECTIONS #5 & #6			F.A. RTE.	SECTION	COUNTY	TOTAL SHEETS	SHEET NO.
et:\pw\work\p\dot\mccordkr\ad0381606\78404-sh1-plan.dgn		DRAWN -	REVISED -					•	41RS-7	Massac	29	10
PLOT SCALE = 100.0000' / in.		CHECKED -	REVISED -		SCALE: SHEET NO. OF SHEETS STA. TO STA.			CONTRACT NO. 78404				
PLOT DATE = 3/19/2014		DATE -	REVISED -		ILLINOIS FED. AID PROJECT							

TYPICAL SECTION #7

FAU 9760
(US 45/10TH ST.)



TO BE USED:
LT. & RT. STA. 1109+07 TO STA. 1115+52

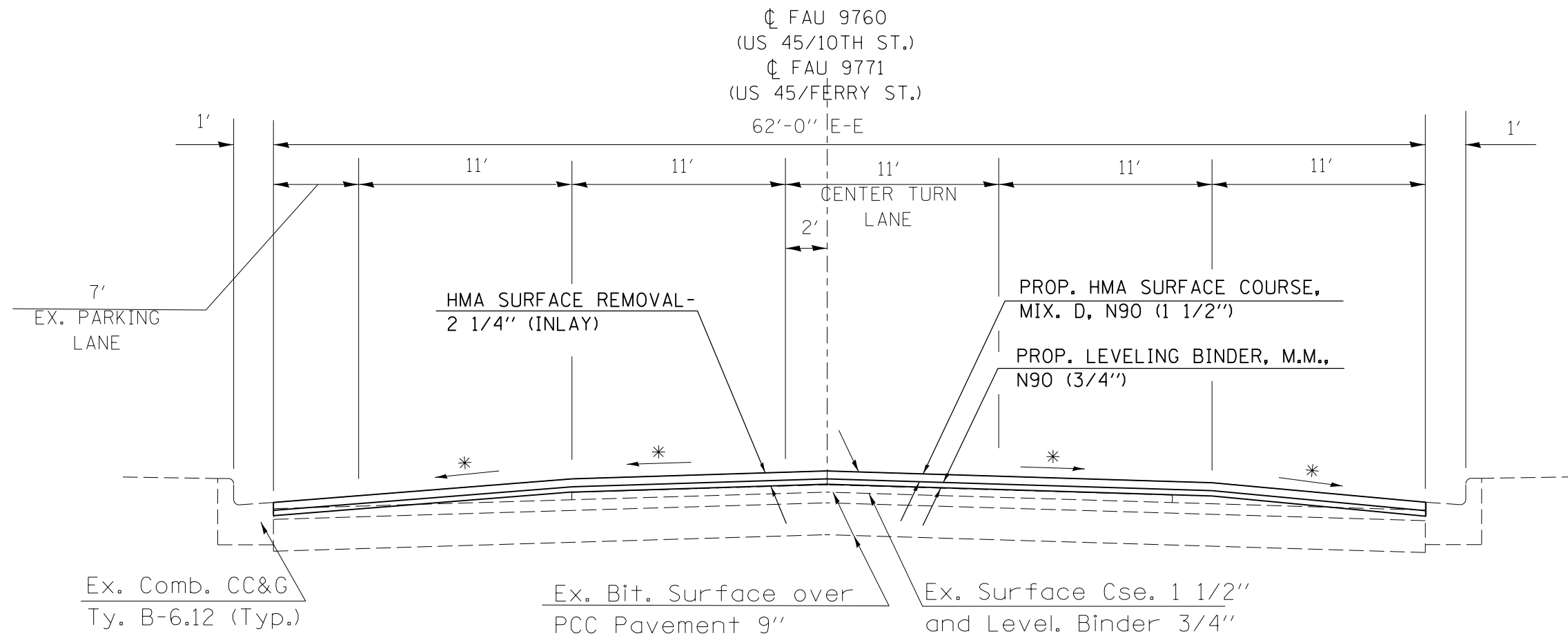
**NO PARKING BETWEEN
LT. STA. 1109+07 TO STA. 1111+70

EQUATION STATION
EQ. STA. 1110+03.20 (BK.) =
STA. 1110+00.00 (AH.)

FILE NAME =	USER NAME = mccordkr	DESIGNED -	REVISED -	STATE OF ILLINOIS DEPARTMENT OF TRANSPORTATION	TYPICAL SECTION #7			F.A. RTE.	SECTION	COUNTY	TOTAL SHEETS	SHEET NO.
et:\pw\work\p1dot\mccordkr\ad0381606\78404	4-sh1-plan.dgn	DRAWN -	REVISED -					•	41RS-7	MASSAC	29	11
	PLOT SCALE = 100.0000' / in.	CHECKED -	REVISED -		CONTRACT NO. 78404							
	PLOT DATE = 3/19/2014	DATE -	REVISED -		SCALE:	SHEET NO.	OF SHEETS	STA.	TO STA.	ILLINOIS FED. AID PROJECT		

FAU 9760 (US 45)

TYPICAL SECTION #8



* MATCH EX. SLOPE

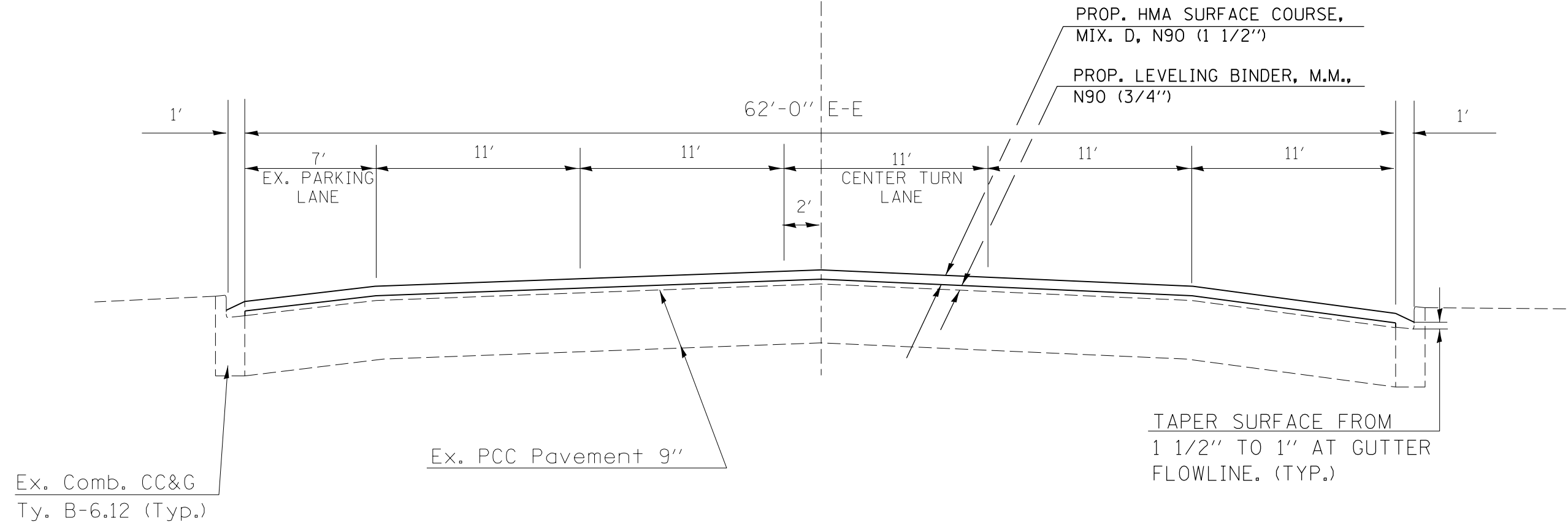
TO BE USED:
 FAU 9760/10TH ST.
 LT. & RT. STA. 1115+52 TO STA. 1131+26
 OMIT FROM STA. 1131+26 TO STA. 1134+47
 LT. & RT. STA. 1134+47 TO STA. 1137+25

• FAU 9760 (US 45)

FILE NAME =	USER NAME = mccordkr	DESIGNED -	REVISED -	STATE OF ILLINOIS DEPARTMENT OF TRANSPORTATION	TYPICAL SECTION #8			F.A. RTE.	SECTION	COUNTY	TOTAL SHEETS	SHEET NO.
et:\pwork\pwork\mccordkr\ad0381606\78404-sh1-plan.dgn	DRAWN -	REVISED -	REVISED -					•	41RS-7	MASSAC	29	12
PLOT SCALE = 100.0000' / in.	CHECKED -	REVISED -	REVISED -		CONTRACT NO. 78404			ILLINOIS FED. AID PROJECT				
PLOT DATE = 3/19/2014	DATE -	REVISED -	REVISED -		SCALE:	SHEET NO.	OF SHEETS	STA.	TO STA.			

TYPICAL SECTION #9

☩ FAU 9760/9771
(US 45/10TH ST./FERRY ST.)



TO BE USED:
FAU 9760/10TH ST. AND MARKET ST.
LT. & RT. STA. 1131+26 TO STA. 1134+47

FILE NAME =	USER NAME = mccordkr	DESIGNED -	REVISED -
et:\pw\work\p1dot\mccordkr\ad0381606\78404-sh1-plan.dgn		DRAWN -	REVISED -
		CHECKED -	REVISED -
		DATE -	REVISED -

**STATE OF ILLINOIS
DEPARTMENT OF TRANSPORTATION**

TYPICAL SECTION #9			
SCALE:	SHEET NO.	OF SHEETS	STA. TO STA.

F.A. RTE.	SECTION	COUNTY	TOTAL SHEETS	SHEET NO.
	41RS-7	MASSAC	29	13
CONTRACT NO. 78404				
ILLINOIS FED. AID PROJECT				

• FAU 9760 (US 45)

FAU 9760 (US 45) PAVEMENT RESURFACING SCHEDULE

LOCATION STATION TO STATION	LENGTH	ROADWAY WIDTH	AGG. SHOULDER WIDTH	ROADWAY AREA	HOT-MIX ASP. SURF. REMOV. 3/4"	HOT-MIX ASP. SURF. REMOV. 2 1/4"	TEMP RAMP	POLY. HOT-MIX ASP. SUR. CSE., MIX. D. N105 (1 1/2")	POLY. LEVELING BINDER (MM) N90 (3/4")	BITUMINOUS MATERIAL (PRIME COAT)	AGG. WEDGE SHOULDER, TY. B	FOR INFORMATIONAL PURPOSE ONLY										
												(FT)	(FT)	(FT)	(SQ YD)	(SQ YD)	(SQ YD)	(SQ YD)	(TON)	(TON)	(LBS)	(TON)
												FAU 9760 (US 45) - STA. 1060+67 TO STA. 1137+25 (URBAN LIMITS)										
	1060+67.00	TO	1082+30.00	2163	26	2.0	6249	6249		22	528	263	4218	42								
	1082+30.00	TO	1084+05.00	175	34		661	661			56	28	446									
Lt.	1082+30.00	TO	1084+05.00	175		2.0								2								
Rt.	1082+30.00	TO	1085+18.00	288		2.0								3								
	1084+05.00	TO	1085+18.00	113	49		615	615			52	26	415									
	1085+18.00	TO	1098+72.00	1354	56		8425	8425			720	354	5687									
	1098+72.00	TO	1105+20.00	648	62		4464	4464			375	188	3013									
	1105+20.00	TO	1107+00.00	180	55		1100	1100			93	47	743									
	1107+00.00	TO	1109+07.00	207	48		1104	1104			93	47	745									
	1109+07.00	TO	1110+03.20	96	62		663	663			56	28	447									
Eq. Sta. 1110+03.20 (bk.) = Sta. 1110+00.00 (ah.)																						
	1110+00.00	TO	1131+26.00	2126	62		14646	14645		52	1231	616	9886									
	1131+26.00	TO	1134+47.00	321	62		2211				190	93	1493									
	1134+47.00	TO	1137+25.00	278	62		1,915	1915		104	161	81	1293									
FAU 9760 TOTALS								7,525	32,316	178	3555	1771	28,386	47								

US 45 SIDEROADS RESURFACING SCHEDULE

LOCATION STATION TO STATION	EDGE OF PAV' T.	15' BK. FROM EP.	SURFACE TYPE	ROADWAY AREA	INCIDENTAL HOT-MIX ASP. SUR.	BITUMINOUS MATERIALS (PRIME COAT)	FOR INFORMATIONAL PURPOSE ONLY				
							(FT)	(FT)	(SQ YD)	(TON)	(LBS)
							FAU 9760 - STA. 1060+67 to STA. 1137+25 (Urban Limits)				
Urban Side Roads											
Lt.	Triplet St.	1065+42.00	51	24	Oil & Chip	63	11	92			
TOTALS							11	92			

• FAU 9760 (US 45)

FAU 9760 (US 45) PAVEMENT MARKING SCHEDULE

STATION TO STATION	WET REFLECTIVE THERMOPLASTIC PAVEMENT MARKING								TEMPORARY				SHORT-TERM PAVT MARK.	NOTES	
	4 INCH (WHITE EDGE LINE)	4 INCH (YELLOW SKIP-DASH)	4 INCH (WHITE SKIP-DASH)	4 INCH SOLID YELLOW	4 INCH SOLID WHITE	6 INCH SOLID WHITE	12 INCH (WHITE DIAGONALS)	24 INCH (STOP BARS)	4 INCH	6 INCH	12 INCH	24 INCH			
	FOOT	FOOT	FOOT	FOOT	FOOT	FOOT	FOOT	FOOT	FOOT	FOOT	FOOT	FOOT			FOOT
FAU 9760 (US 45) - STA. 1060+67 TO STA. 1137+25 (URBAN LIMITS)															
Lt.	1060+67.00	TO	1085+18.00	2451									2451		
Lt.	1060+67.00	TO	1071+33.00			1066							1066		NPZ
Rt.	1060+67.00	TO	1061+82.00			115							115		NPZ
Rt.	1060+67.00	TO	1084+05.00	2338									2338		
	1061+82.00	TO	1081+57.00		494								494		
Rt.	1079+46.00	TO	1083+41.00			395							395		NPZ
Lt.	1081+57.00	TO	1083+41.00			184							184		NPZ
	1083+41.00	TO	1084+92.00			604		40					604	40	Cont. CLTL
	1084+92.00	TO	1110+03.20			1256							1256		Thru Lanes
Lt & Rt.	1084+92.00	TO	1092+40.00		374	1496							1870		Cont. CLTL
Lt & Rt.	1092+40.00	TO	1093+40.00			400		35					400	35	Cont. CLTL
Lt & Rt.	1093+40.00	TO	1094+40.00			200	100						300		LTL Lines
Lt & Rt.	1095+20.00	TO	1105+00.00		490	1960							2450		Cont. CLTL
Lt & Rt.	1105+00.00	TO	1107+00.00			800		85					800	85	Cont. CLTL
Lt & Rt.	1105+00.00	TO	1107+20.00			400		90					400	90	Diagonals
Lt & Rt.	1107+00.00	TO	1109+07.00			414							414		DbI. Yellow
Rt.	1108+60.00	TO	1110+90.00			233		40					233	40	Diagonals
Lt & Rt.	1109+07.00	TO	1110+03.20			385		65					385	65	Cont. CLTL
	1060+67.00	TO	1083+41.00												682
	1083+41.00	TO	1085+00.00												95
	1085+00.00	TO	1110+03.20												3004
Eq. Sta. 1110+03.20 (bk.) = Sta. 1110+00.00 (ah.)															

• FAU 9760 (US 45)

FILE NAME =	USER NAME = mccordkr	DESIGNED -	REVISED -	STATE OF ILLINOIS DEPARTMENT OF TRANSPORTATION	FAU 9760 PAVEMENT MARKING SCHEDULE	F.A. RTE.	SECTION	COUNTY	TOTAL SHEETS	SHEET NO.	
et:\pwork\pwork\mccordkr\0381606\78424-shit-plan.dgn		DRAWN -	REVISED -			•	40RS-10, 41RS-6	MASSAC	45	15	
		CHECKED -	REVISED -			CONTRACT NO. 78219					
		DATE -	REVISED -			SCALE:	SHEET NO. OF SHEETS	STA. TO STA.	ILLINOIS FED. AID PROJECT		

FAU 9760 (US 45) PAVEMENT MARKING SCHEDULE (CONT.)

STATION TO STATION	WET REFLECTIVE THERMOPLASTIC PAVEMENT MARKING								TEMPORARY				SHORT-TERM PAVT MARK.	NOTES		
	4 INCH (WHITE EDGELINE)	4 INCH (YELLOW SKIP-DASH)	4 INCH (WHITE SKIP-DASH)	4 INCH SOLID YELLOW	4 INCH SOLID WHITE	6 INCH SOLID WHITE	12 INCH (WHITE DIAGONALS)	24 INCH (STOP BARS)	4 INCH	6 INCH	12 INCH	24 INCH				
	FOOT	FOOT	FOOT	FOOT	FOOT	FOOT	FOOT	FOOT	FOOT	FOOT	FOOT	FOOT				
Eq. Sta. 1110+03.20 (bk.) = Sta. 1110+00.00 (ah.)																
	1110+00.00	TO	1137+25.00											3270		
	1110+00.00	TO	1131+26.00			1064				1064					Thru Lanes	
Lt & Rt.	1110+00.00	TO	1111+17.00				468			468					Cont. CLTL	
	1111+17.00	TO	1113+08.00		96		382			478					Cont. CLTL	
	1113+08.00	TO	1114+08.00				400		35	400		35			Cont. CLTL	
	1114+08.00	TO	1115+08.00				200	100		300					LTL Lines	
	1115+96.00	TO	1116+96.00				200	100		300					LTL Lines	
Lt & Rt.	1116+96.00	TO	1117+96.00				400		35	400		35			Cont. CLTL	
Lt & Rt.	1117+96.00	TO	1126+50.00		428		1708			2136					Cont. CLTL	
	1126+50.00	TO	1127+50.00				400		35	400		35			Cont. CLTL	
Rt.	1127+50.00	TO	1128+50.00				200	100		300					LTL Lines	
	1129+15.00	TO	1132+75.00				720			720					DbI. Yellow	
Lt,	1129+15.00	TO	1130+35.00				120			120					LTL Line	
	1131+26.00	TO	1134+47.00			162				162					Thru Lanes	
Rt.	1131+55.00	TO	1132+82.00				127			127			22		LTL Line	
	1132+75.00									11			11			
	1132+86.00							124			124				Crosswalk	
	1133+62.00							124			124				Crosswalk	
Lt.	1133+72.00	TO	1134+97.00				125			22	125		22		LTL Line	
Lt & Rt.	1133+82.00	TO	1137+12.00				660			11	660		11		DbI. Yellow	
	1137+12.00									11			11			
	1134+47.00	TO	1137+25.00			140				140					Thru Lanes	
Rt.	1135+97.00	TO	1137+23.00				126			23	126		23		LTL Line	
	1137+27.00							142			142				Crosswalk	
SUBTOTALS				4789	1,882	2,622	13883	1405	390	460	100	24,581	390	460	100	7,051
TOTALS				24,581				390	460	100	24,581	390	460	100	7,051	

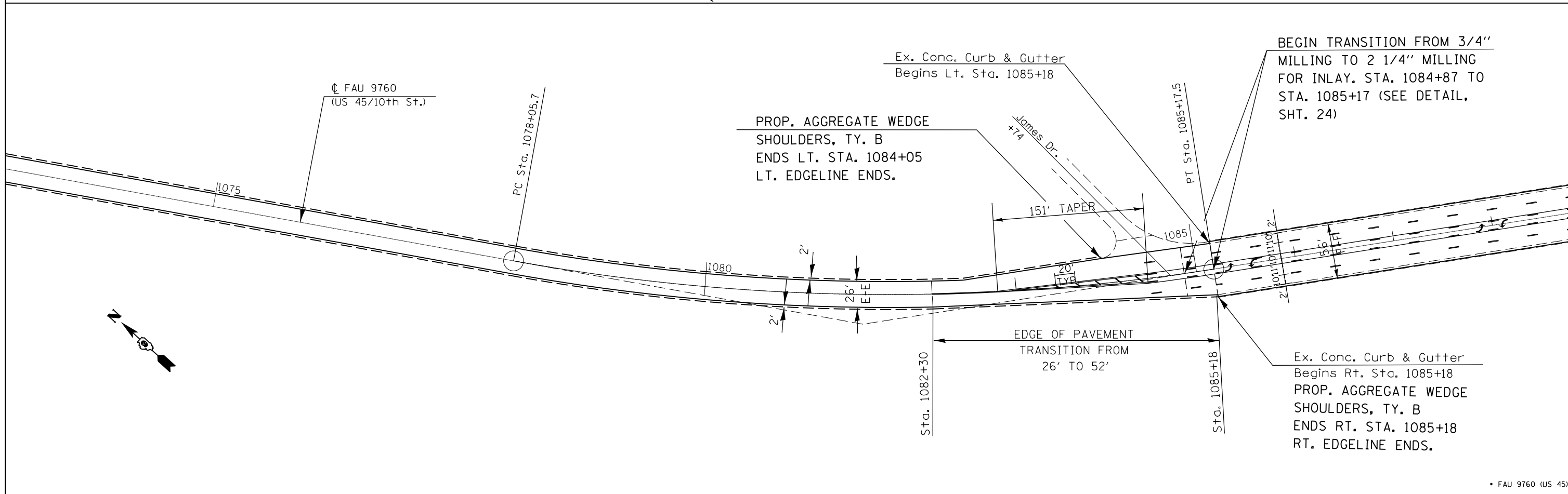
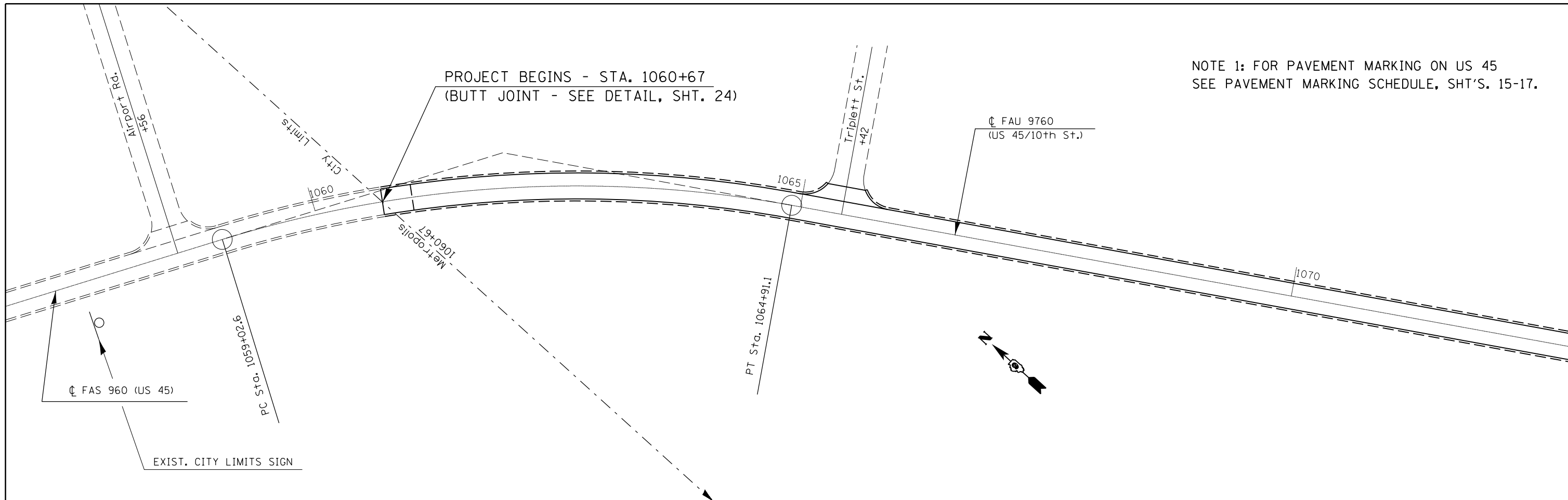
FAU 9760 (US 45) PAVEMENT MARKING
LETTERS AND SYMBOLS SCHEDULE

STATION TO STATION	WET REFLEC. THERMOPLASTIC	TEMPORARY	NOTES
	LETTERS AND SYMBOLS	LETTERS AND SYMBOLS	
	SQ FT	SQ FT	
FAU 9760 (US 45) - STA. 1060+67 TO STA. 1137+70			
1085+53.00	31.2	31.2	DbI Lt. Turn Arrows
1088+00.00	31.2	31.2	DbI Lt. Turn Arrows
1090+00.00	31.2	31.2	DbI Lt. Turn Arrows
1093+50.00	20.8	20.8	ONLY
1093+78.00	15.6	15.6	Left Turn Arrow
1096+00.00	31.2	31.2	DbI Lt. Turn Arrows
1097+75.00	31.2	31.2	DbI Lt. Turn Arrows
1099+75.00	31.2	31.2	DbI Lt. Turn Arrows
1101+70.00	31.2	31.2	DbI Lt. Turn Arrows
1103+50.00	31.2	31.2	DbI Lt. Turn Arrows
1112+00.00	31.2	31.2	DbI Lt. Turn Arrows
1114+16.00	20.8	20.8	ONLY
1114+44.00	15.6	15.6	Left Turn Arrow
1116+50.00	15.6	15.6	Left Turn Arrow
1116+78.00	20.8	20.8	ONLY
1119+00.00	31.2	31.2	DbI Lt. Turn Arrows
1121+20.00	31.2	31.2	DbI Lt. Turn Arrows
1123+35.00	31.2	31.2	DbI Lt. Turn Arrows
1125+50.00	31.2	31.2	DbI Lt. Turn Arrows
1127+60.00	20.8	20.8	ONLY
1127+88.00	15.6	15.6	Left Turn Arrow
1129+89.00	15.6	15.6	Left Turn Arrow
1130+17.00	20.8	20.8	ONLY
1131+65.00	20.8	20.8	ONLY
1131+93.00	15.6	15.6	Left Turn Arrow
1134+51.00	15.6	15.6	Left Turn Arrow
1134+79.00	20.8	20.8	ONLY
1136+07.00	62.4	62.4	3 - ONLY's
1136+35.00	42.7	42.7	LTA, RTA & Thru Arrow
TOTALS	765.5	765.5	

NOTE: ALL LETTERS ARE 8 FT. SIZE AND ALL SYMBOLS ARE LARGE SIZE.

• FAU 9760 (US 45)

FILE NAME =	USER NAME = mccordkr	DESIGNED -	REVISED -	STATE OF ILLINOIS DEPARTMENT OF TRANSPORTATION	FAU 9760 PAVEMENT MARKING SCHEDULE (CONTINUED)	F.A. RTE.	SECTION	COUNTY	TOTAL SHEETS	SHEET NO.
et:\pw\work\p\dot\mccordkr\ad0381606\78404-shit-plan.dgn	DRAWN -	REVISED -	•			41RS-7	MASSAC	29	17	
PLOT SCALE = 100.0000' / 1in.	CHECKED -	REVISED -	CONTRACT NO. 78404							
PLOT DATE = 3/19/2014	DATE -	REVISED -	SCALE:			SHEET NO.	OF SHEETS	STA.	TO STA.	ILLINOIS FED. AID PROJECT



• FAU 9760 (US 45)

FILE NAME =	USER NAME = mccordkr	DESIGNED -	REVISED -
e:\pwork\pwork\mccordkr\d0381606\78404-sh1-plan.dgn		DRAWN -	REVISED -
	PLOT SCALE = 100.0000' / in.	CHECKED -	REVISED -
	PLOT DATE = 3/19/2014	DATE -	REVISED -

STATE OF ILLINOIS
DEPARTMENT OF TRANSPORTATION

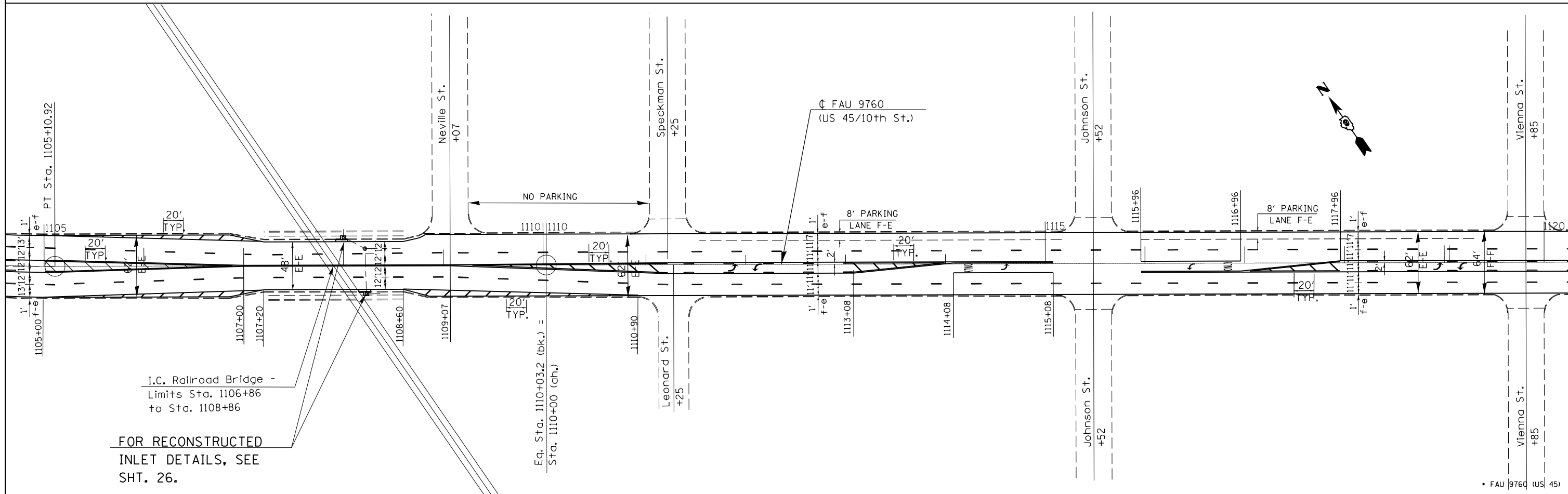
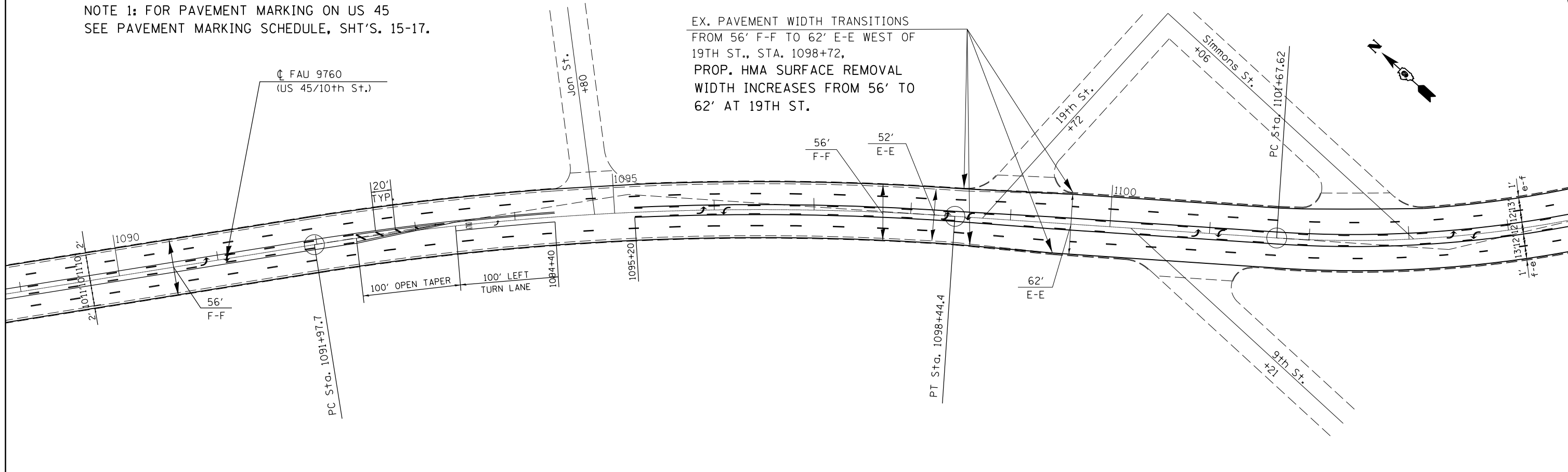
PLAN SHEET - STA. 1060 + 67 TO STA. 1089 + 00

SCALE:	SHEET NO.	OF SHEETS	STA.	TO STA.
--------	-----------	-----------	------	---------

F.A. RTE.	SECTION	COUNTY	TOTAL SHEETS	SHEET NO.
•	41RS-7	MASSAC	29	18
CONTRACT NO. 78404				
ILLINOIS FED. AID PROJECT				

NOTE 1: FOR PAVEMENT MARKING ON US 45
SEE PAVEMENT MARKING SCHEDULE, SHT'S. 15-17.

EX. PAVEMENT WIDTH TRANSITIONS
FROM 56' F-F TO 62' E-E WEST OF
19TH ST., STA. 1098+72,
PROP. HMA SURFACE REMOVAL
WIDTH INCREASES FROM 56' TO
62' AT 19TH ST.



FOR RECONSTRUCTED
INLET DETAILS, SEE
SHT. 26.

FILE NAME =	USER NAME = mccordkr	DESIGNED -	REVISED -
ei:\pwork\pwork\mccordkr\10381606\78404\24-sh1-plan.dgn		DRAWN -	REVISED -
	PLOT SCALE = 100.0000' / in.	CHECKED -	REVISED -
	PLOT DATE = 3/19/2014	DATE -	REVISED -

**STATE OF ILLINOIS
DEPARTMENT OF TRANSPORTATION**

PLAN SHEET - STA. 1089+00 TO STA. 1120+33

SCALE: SHEET NO. OF SHEETS STA. TO STA.

F.A. RTE.	SECTION	COUNTY	TOTAL SHEETS	SHEET NO.
	41RS-7	MASSAC	29	19
CONTRACT NO. 78404				
ILLINOIS FED. AID PROJECT				

• FAU 9760 (US) 45

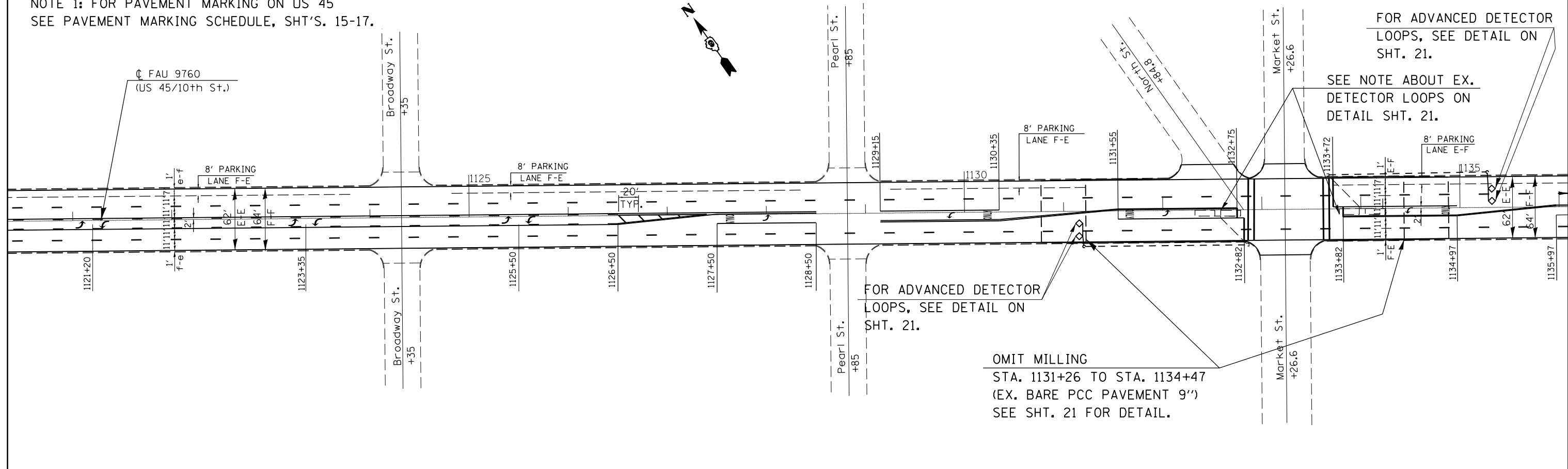
NOTE 1: FOR PAVEMENT MARKING ON US 45
SEE PAVEMENT MARKING SCHEDULE, SHT'S. 15-17.

FOR ADVANCED DETECTOR
LOOPS, SEE DETAIL ON
SHT. 21.

SEE NOTE ABOUT EX.
DETECTOR LOOPS ON
DETAIL SHT. 21.

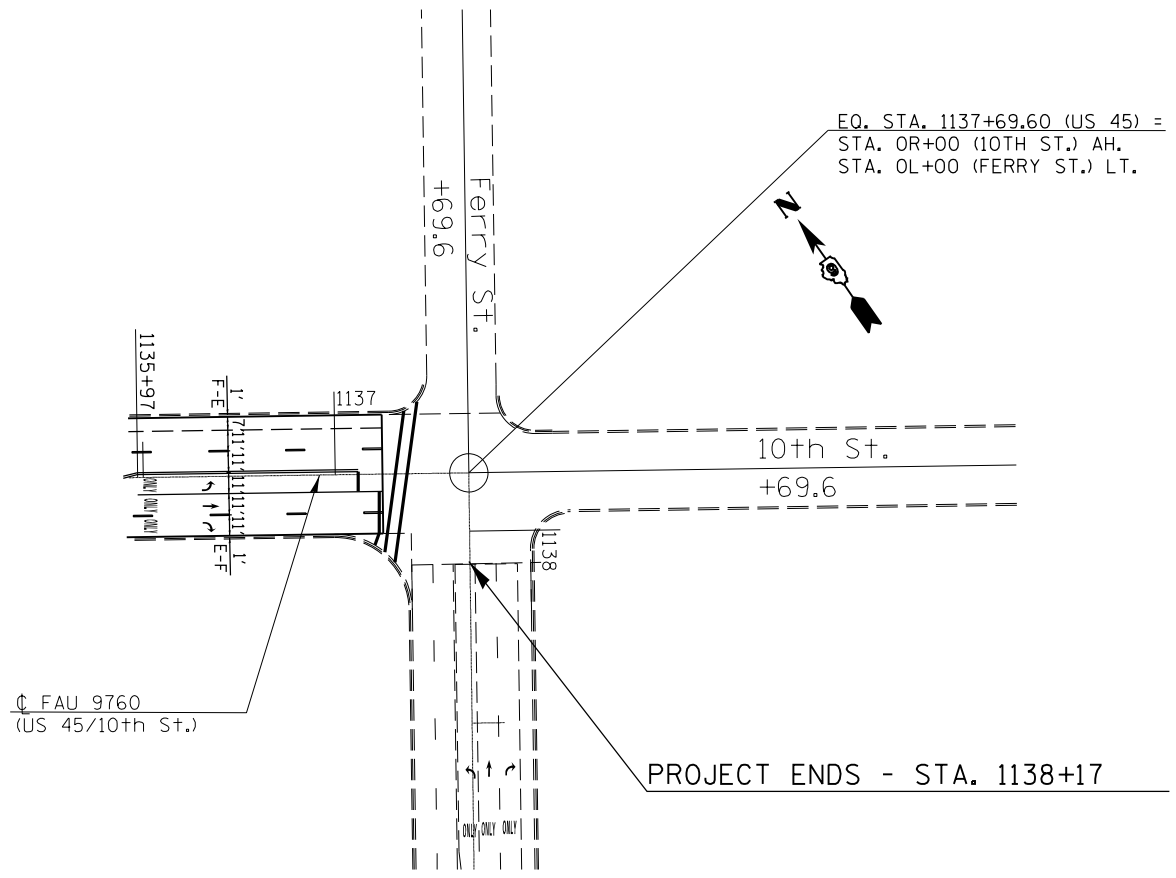
FOR ADVANCED DETECTOR
LOOPS, SEE DETAIL ON
SHT. 21.

OMIT MILLING
STA. 1131+26 TO STA. 1134+47
(EX. BARE PCC PAVEMENT 9")
SEE SHT. 21 FOR DETAIL.



EQ. STA. 1137+69.60 (US 45) =
STA. OR+00 (10TH ST.) AH.
STA. OL+00 (FERRY ST.) LT.

PROJECT ENDS - STA. 1138+17



• FAU 9760 (US 45)

FILE NAME =	USER NAME = mccordkr	DESIGNED -	REVISED -
c:\pwork\pwork\mccordkr\d0381606\78404\4-sht-plan.dgn		DRAWN -	REVISED -
	PLOT SCALE = 100.0000' / in.	CHECKED -	REVISED -
	PLOT DATE = 3/19/2014	DATE 1140+67	REVISED -

STATE OF ILLINOIS
DEPARTMENT OF TRANSPORTATION

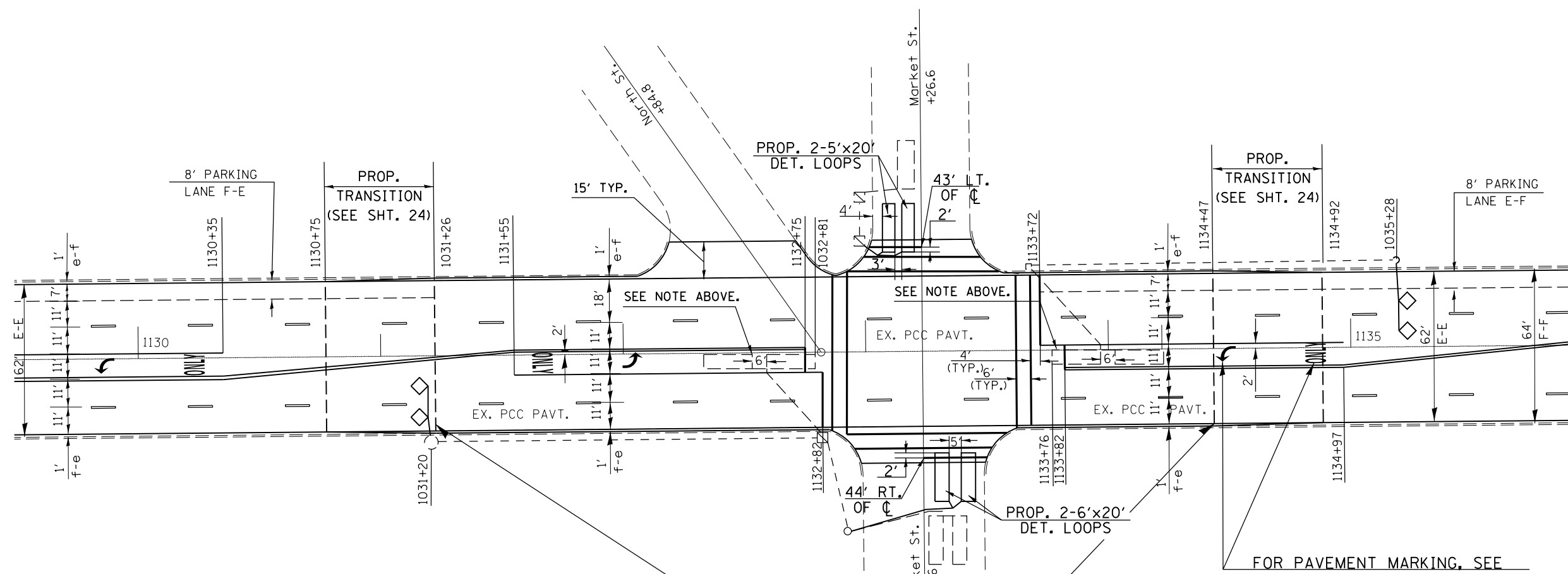
PLAN SHEET - STA. 1120+33 TO STA. 1137+69.60

SCALE: SHEET NO. OF SHEETS STA. TO STA.


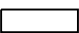
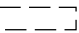
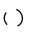

F.A. RTE.	SECTION	COUNTY	TOTAL SHEETS	SHEET NO.
	41R5-7	MASSAC	29	20
CONTRACT NO. 78404				
ILLINOIS FED. AID PROJECT				



NOTE:
 EX. DETECTOR LOOPS AND LEAD WIRES IN LEFT TURN LANES ARE NOT TO BE DISTURBED. IF THEY ARE CUT, IT IS AT THE CONTRACTORS COST AND HIS/HER RESPONSIBILITY TO REPLACE THEM.



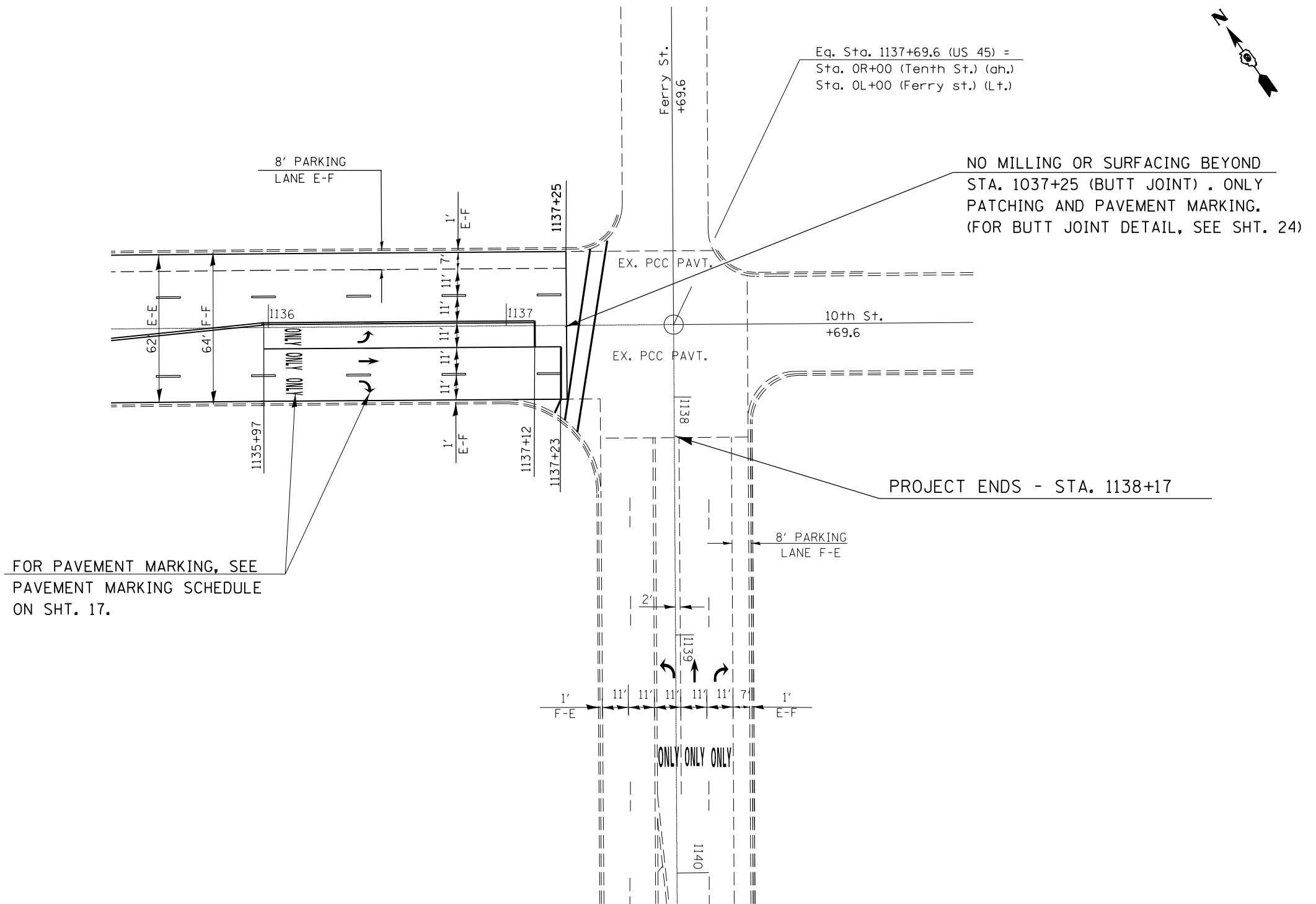
LEGEND

-  PROP. 5'x5' DETECTOR LOOPS (SEE GENERAL NOTES)
-  PROP. 5'x20 AND 6'x20' DETECTOR LOOPS (SEE GENERAL NOTES)
-  EX. 6'x20' DETECTOR LOOPS
-  EX. SPLICE POINT
-  EX. HANDHOLE

NO MILLING FROM
 STA. 1131+26 TO STA. 1134+47
 (EX. BARE PCC PAVEMENT 9')

FOR PAVEMENT MARKING, SEE
 PAVEMENT MARKING SCHEDULE
 ON SHT. 23.

FILE NAME = c:\pwork\pwork\mccordkr\10381606\78219-24-sht-plan.dgn	USER NAME = mccordkr	DESIGNED -	REVISED -	STATE OF ILLINOIS DEPARTMENT OF TRANSPORTATION	INTERSECTION DETAIL - US 45 (10TH ST.) & MARKET ST.			F.A. RTE.	SECTION	COUNTY	TOTAL SHEETS	SHEET NO.
	PLOT SCALE = 100.0000' / in.	CHECKED -	REVISED -					41RS-7	MASSAC	29	21	
PLOT DATE = 3/19/2014	DATE -	REVISED -	REVISED -	SCALE:	SHEET NO.	OF SHEETS	STA.	TO STA.	ILLINOIS FED. AID PROJECT			
								CONTRACT NO. 78219				



FOR PAVEMENT MARKING, SEE PAVEMENT MARKING SCHEDULE ON SHT. 17.

• FAU 9760 (US 45)

FILE NAME =	USER NAME = mccordkr	DESIGNED -	REVISED -
ei:\pw\work\p\dot\mccordkr\ad0381606\78404-sh1-plan.dgn		DRAWN -	REVISED -
	PLOT SCALE = 100.0000' / in.	CHECKED -	REVISED -
	PLOT DATE = 3/19/2014	DATE -	REVISED -

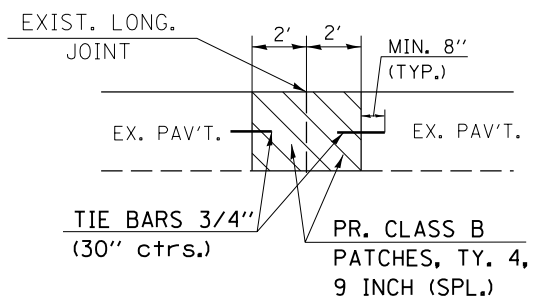
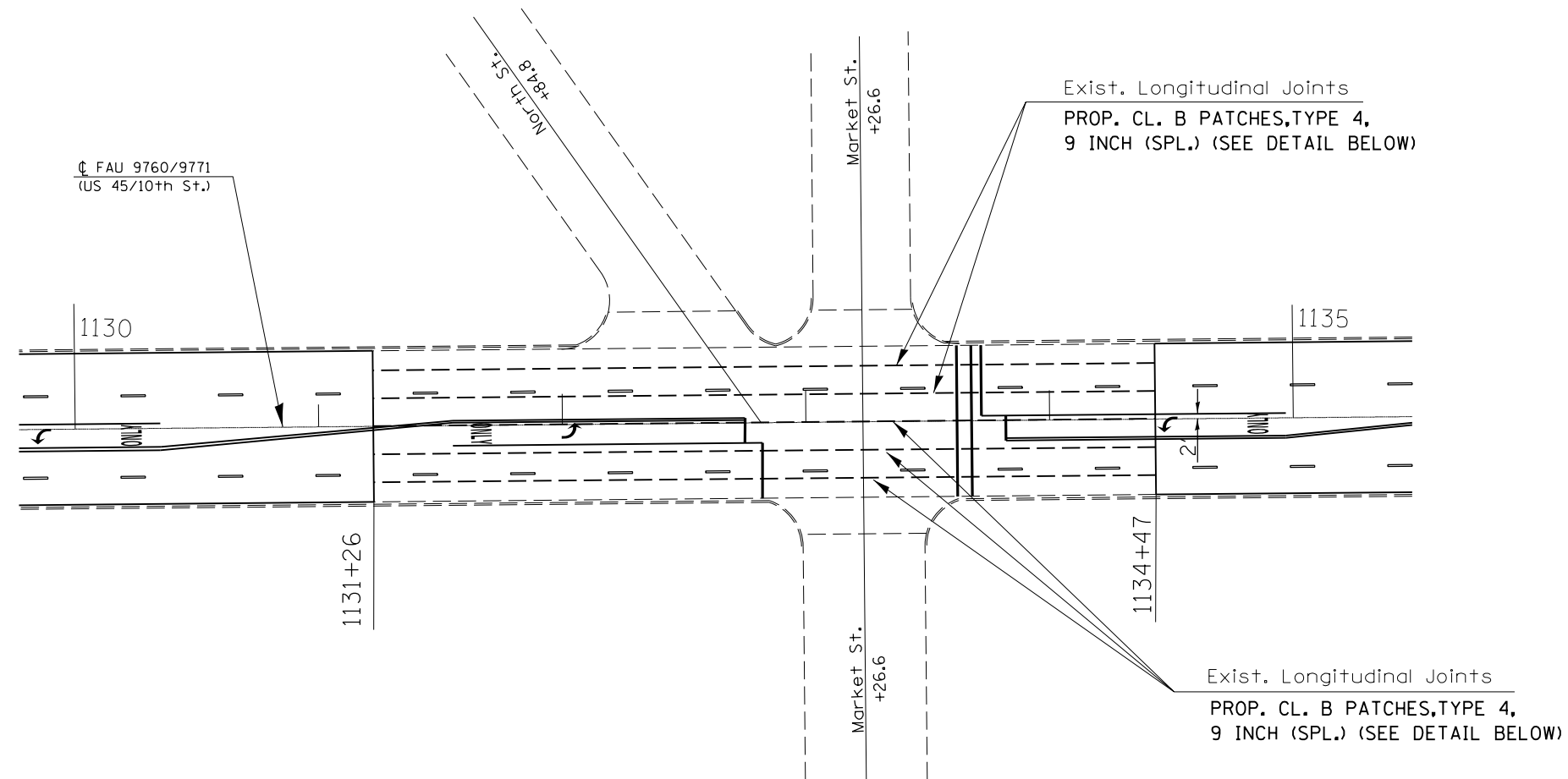
**STATE OF ILLINOIS
DEPARTMENT OF TRANSPORTATION**

INTERSECTION DETAIL - US 45 (10TH ST. & FERRY ST.)

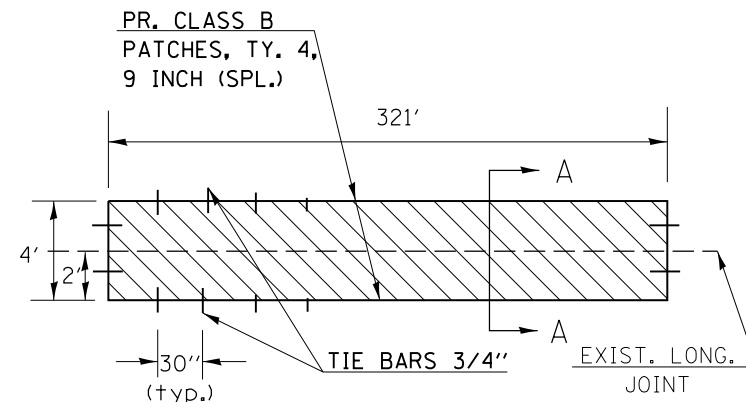
SCALE: SHEET NO. OF SHEETS STA. TO STA.

F.A. RTE.	SECTION	COUNTY	TOTAL SHEETS	SHEET NO.
•	41R5-7	MASSAC	29	22
CONTRACT NO. 78404				
ILLINOIS FED. AID PROJECT				

DETAIL FOR CLASS B PATCHES (SPECIAL)
&
LONGITUDINAL JOINT REPAIR



SEC. A-A



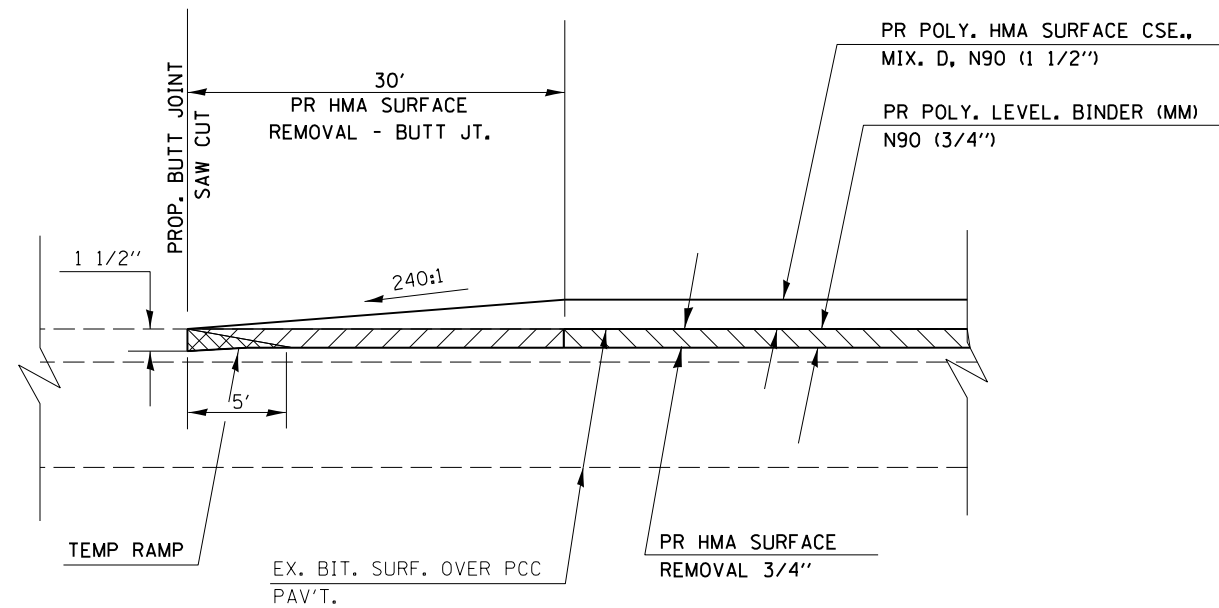
PLAN VIEW

NOTE: SEE SPECIAL PROVISIONS FOR
INFORMATION ON CONSTRUCTION &
PAYMENT OF CLASS B PATCHES, TY.
4, 9 INCH (SPECIAL).

• FAU 9760 (US 45)

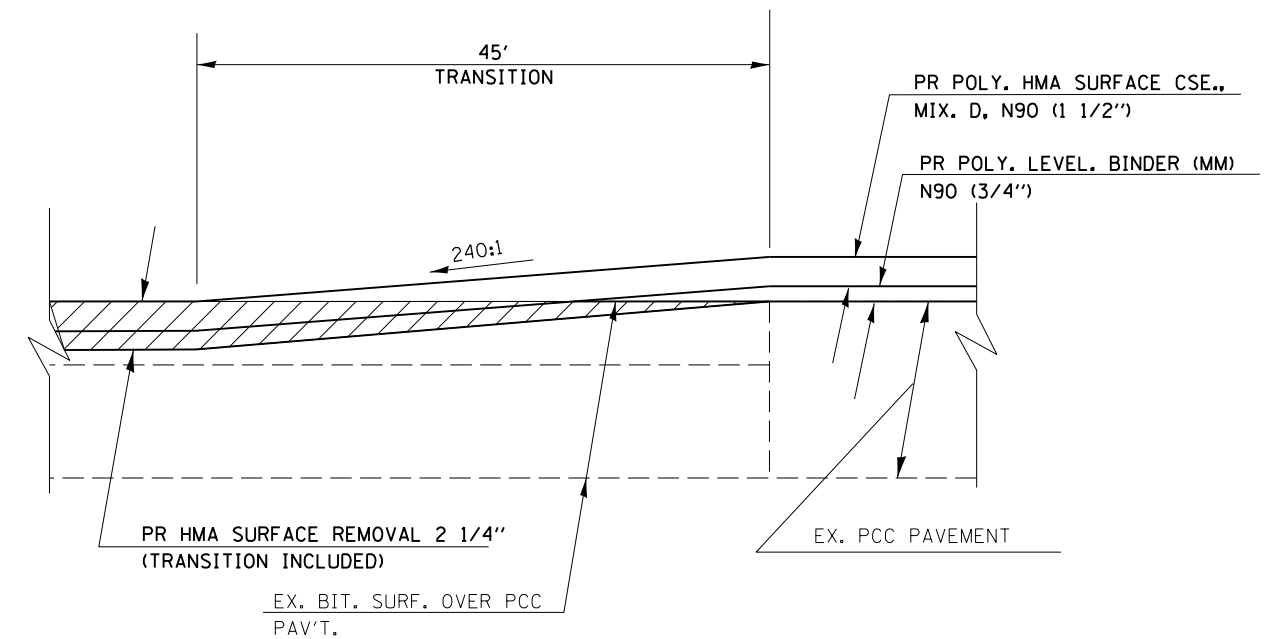
FILE NAME = c:\pwork\pwork\mccordkr\0381606\78404-sh1-plan.dgn	USER NAME = mccordkr	DESIGNED -	REVISED -	STATE OF ILLINOIS DEPARTMENT OF TRANSPORTATION	DETAIL - CLASS B PATCHES (SPECIAL)			F.A. RTE.	SECTION	COUNTY	TOTAL SHEETS	SHEET NO.
	PLOT SCALE = 100.0000' / in.	CHECKED -	REVISED -					41RS-7	MASSAC	29	23	
PLOT DATE = 3/19/2014	DATE -	REVISED -	REVISED -		SCALE: SHEET NO. OF SHEETS STA. TO STA.			CONTRACT NO. 78404				
							ILLINOIS FED. AID PROJECT					

DETAIL FOR HMA SURFACE REMOVAL - BUTT JOINT



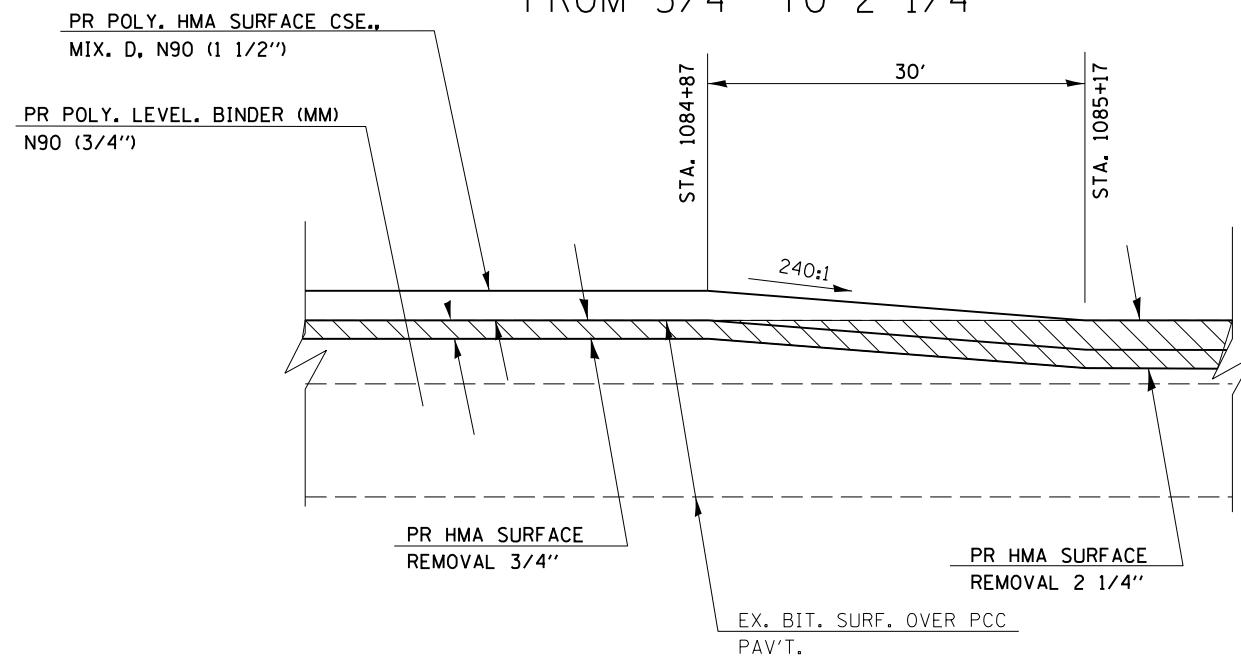
TO BE USED:
STA. 1060+67 (BEGINNING OF PROJECT)

DETAIL FOR HMA SURFACE TRANSITION OVER EXISTING PCC PAVEMENT



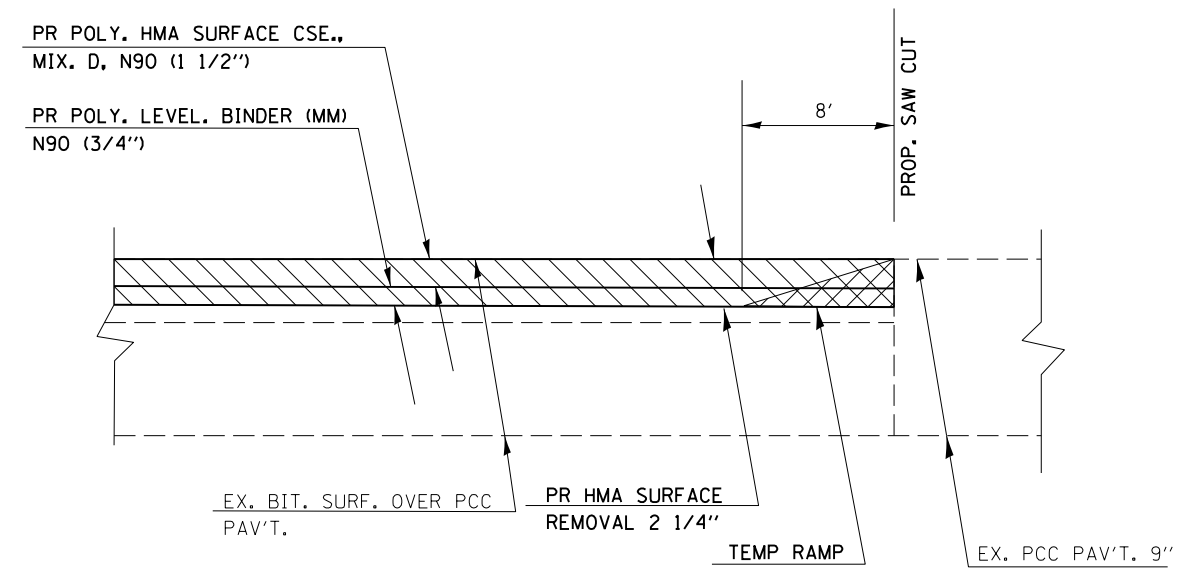
TO BE USED:
STA. 1030+75 TO STA. 1031+26
STA. 1134+47 TO STA. 1134+92

DETAIL FOR HMA SURFACE REMOVAL TRANSITION FROM 3/4" TO 2 1/4"



TO BE USED:
STA. 1084+87 TO STA. 1085+17
TRANSITION FROM 3/4" MILLING
TO 2 1/4" MILLING INLAY.

DETAIL FOR HMA SURFACE REMOVAL INLAY AND JOINT SAW CUT



TO BE USED:
STA. 1137+25

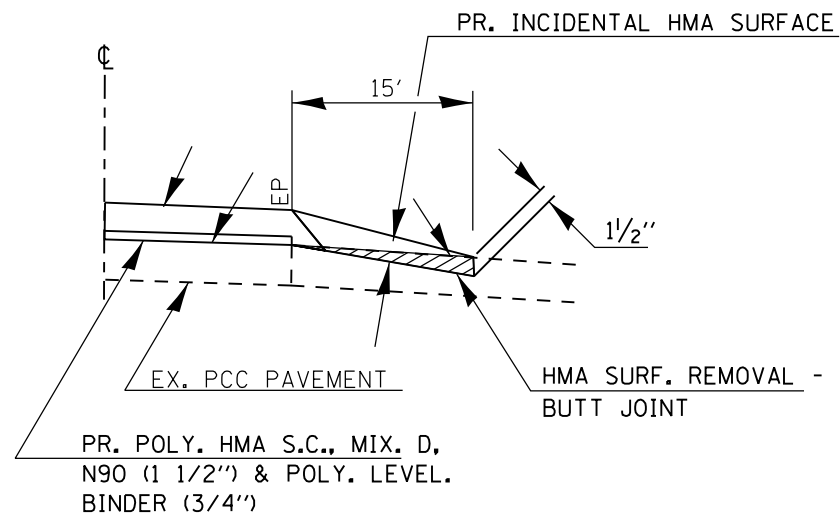
FILE NAME =	USER NAME = mccordkr	DESIGNED -	REVISED -
et:\pw\work\p1dot\mccordkr\10381606\78404-sh-t-plan.dgn		DRAWN -	REVISED -
		CHECKED -	REVISED -
		DATE -	REVISED -

STATE OF ILLINOIS
DEPARTMENT OF TRANSPORTATION

DETAIL - BUTT JOINTS AND MILLING TRANSITIONS			
SCALE:	SHEET NO.	OF SHEETS	STA. TO STA.

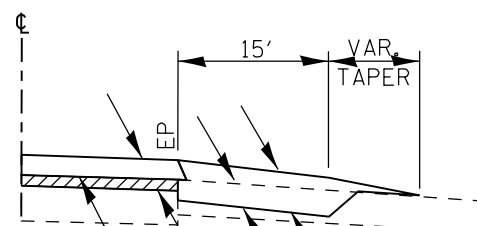
F.A. RTE.	SECTION	COUNTY	TOTAL SHEETS	SHEET NO.
	41RS-7	MASSAC	29	24
CONTRACT NO. 78404				
ILLINOIS FED. AID PROJECT				

SIDEROAD AND ENTRANCE DETAILS



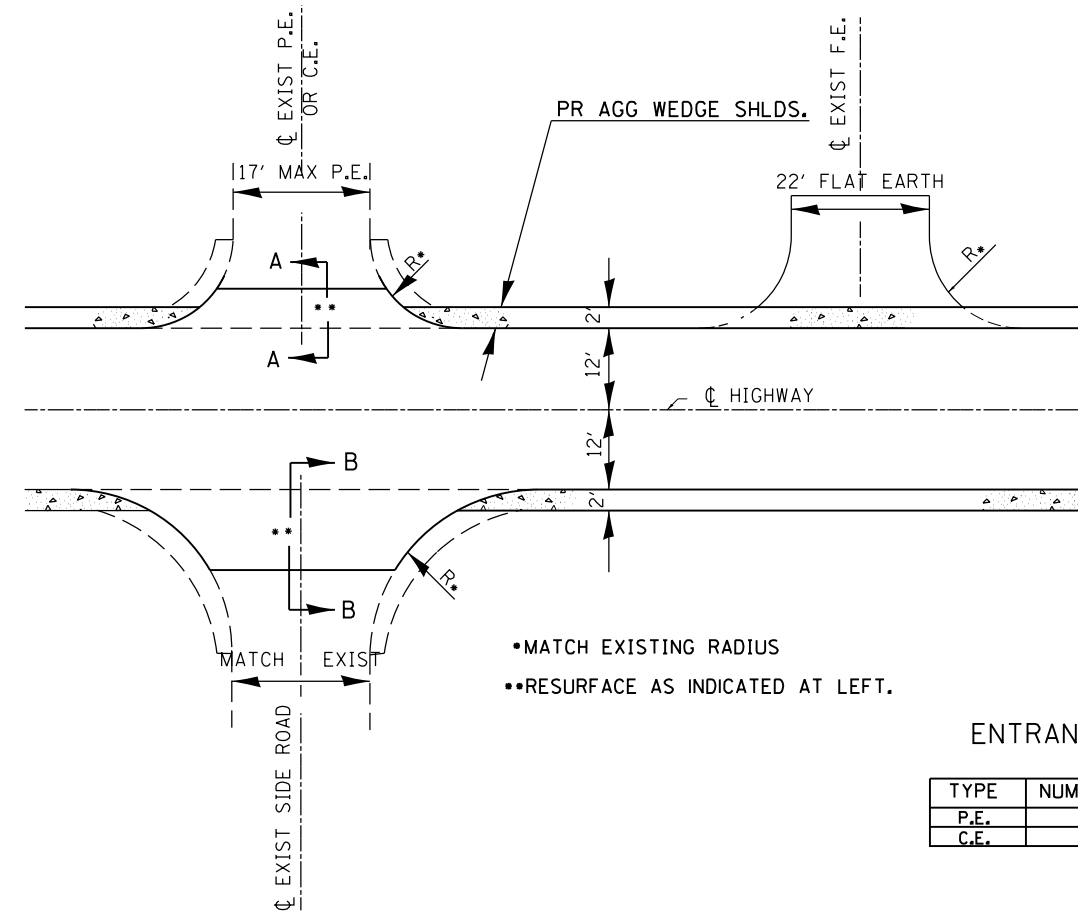
PR. POLY. HMA S.C., MIX. D, N90 (1 1/2'') & POLY. LEVEL. BINDER (3/4'')

SIDE ROAD SEC. B-B
EX. BIT. OR CONC. SURFACE



EX. BIT. SURF. OVER
EX. PCC PAVEMENT
PR. POLY. HMA S.C., MIX. D, N90 (1 1/2'') & POLY. LEVEL. BINDER (3/4'');
HMA SURF. REMOVAL 3/4''

SIDE ROAD SEC. B-B
EX. OIL & CHIP SURFACE
(SEE NOTE 1)
TRIPLETT ST. - LT. STA. 1065+42



- MATCH EXISTING RADIUS
- RESURFACE AS INDICATED AT LEFT.

ENTRANCE SCHEDULE

TYPE	NUMBER OF ENTRANCES
P.E.	0
C.E.	0

NOTES

- IF EXISTING SUBBASE IS INADEQUATE, AS DETERMINED BY THE ENGINEER, THE SIDE ROADS SHALL BE CORED OUT AND AGGREGATE SUBBASE, TYPE B SHALL BE PLACED FOR BASE. THE COST OF CORING OUT THE SIDE ROAD AND ANY AGGREGATE BASE COURSE SHALL BE PAID FOR AS SPECIFIED IN ART. 109.04 OF THE STANDARD SPECIFICATIONS FOR ROAD AND BRIDGE CONSTRUCTION. IF EXISTING SUBBASE IS DETERMINED TO BE ADEQUATE, THE PREPARATION OF THE BASE SHALL BE CONSTRUCTED ACCORDING TO ARTICLE 406.19.
- VARIABLE SHAPING IS INCLUDED IN THE COST OF INCIDENTAL HOT-MIX ASPHALT SURFACE.

• FAU 9760 (US 45)

FILE NAME =	USER NAME = mccordkr	DESIGNED -	REVISED -
et:\pw\work\p1dot\mccordkr\ad0381606\78404\24-shd-plan.dgn		DRAWN -	REVISED -
	PLOT SCALE = 100.0000' / 1in.	CHECKED -	REVISED -
	PLOT DATE = 3/19/2014	DATE -	REVISED -

STATE OF ILLINOIS
DEPARTMENT OF TRANSPORTATION

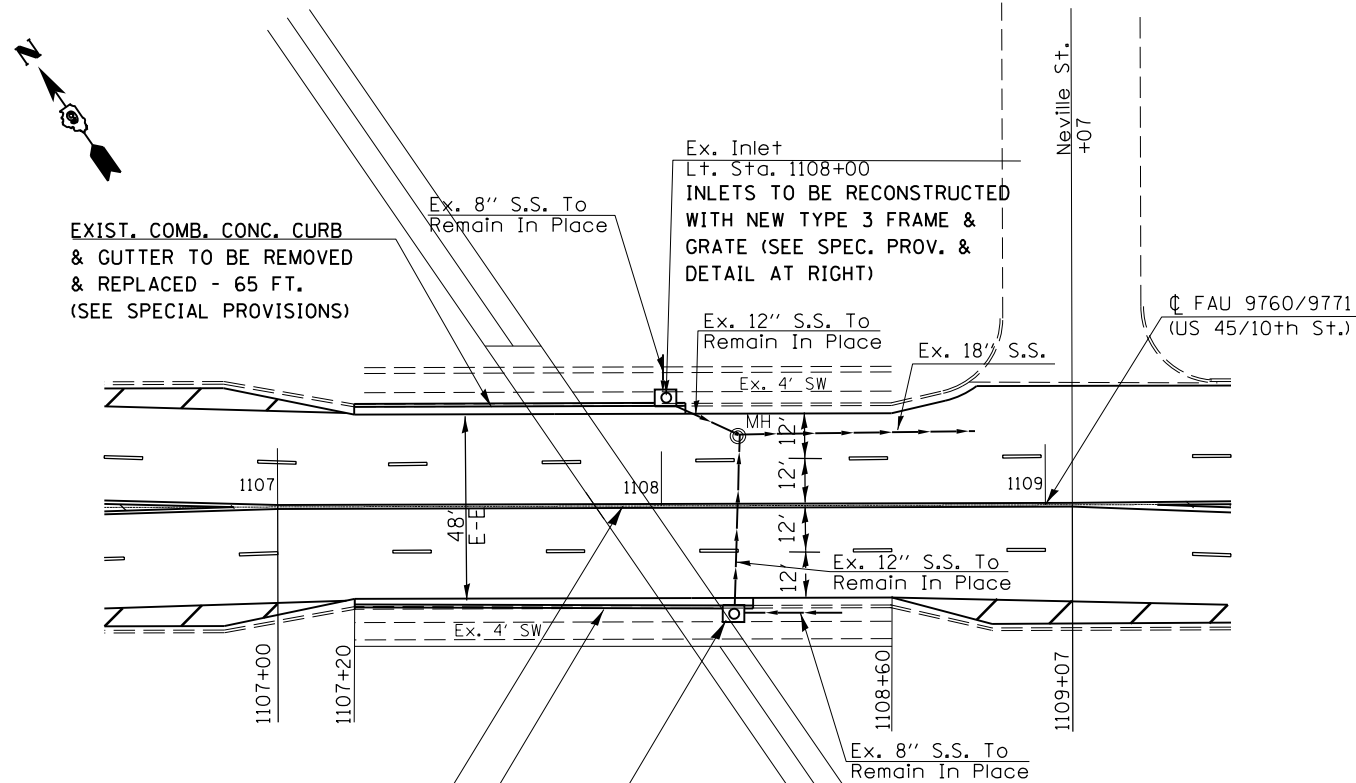
SIDE ROAD AND ENTRANCE DETAILS

SCALE: SHEET NO. OF SHEETS STA. TO STA.

F.A. RTE.	SECTION	COUNTY	TOTAL SHEETS	SHEET NO.
	41RS-7	MASSAC	29	25
CONTRACT NO. 78404				
FED. ROAD DIST. NO. ILLINOIS FED. AID PROJECT				

INLETS TO BE RECONSTRUCTED DETAILS

PLAN VIEW OF RECONSTRUCTED INLETS LOCATION

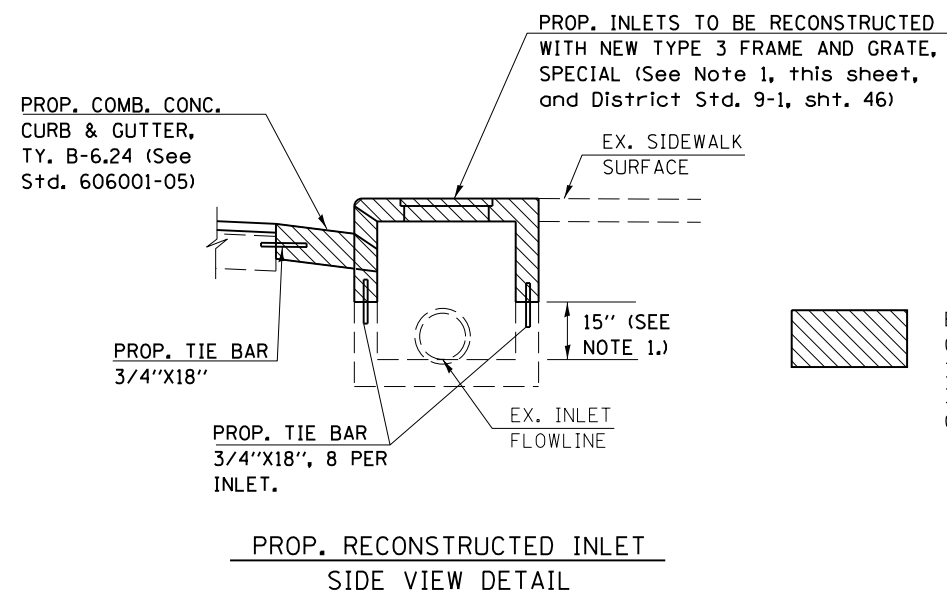
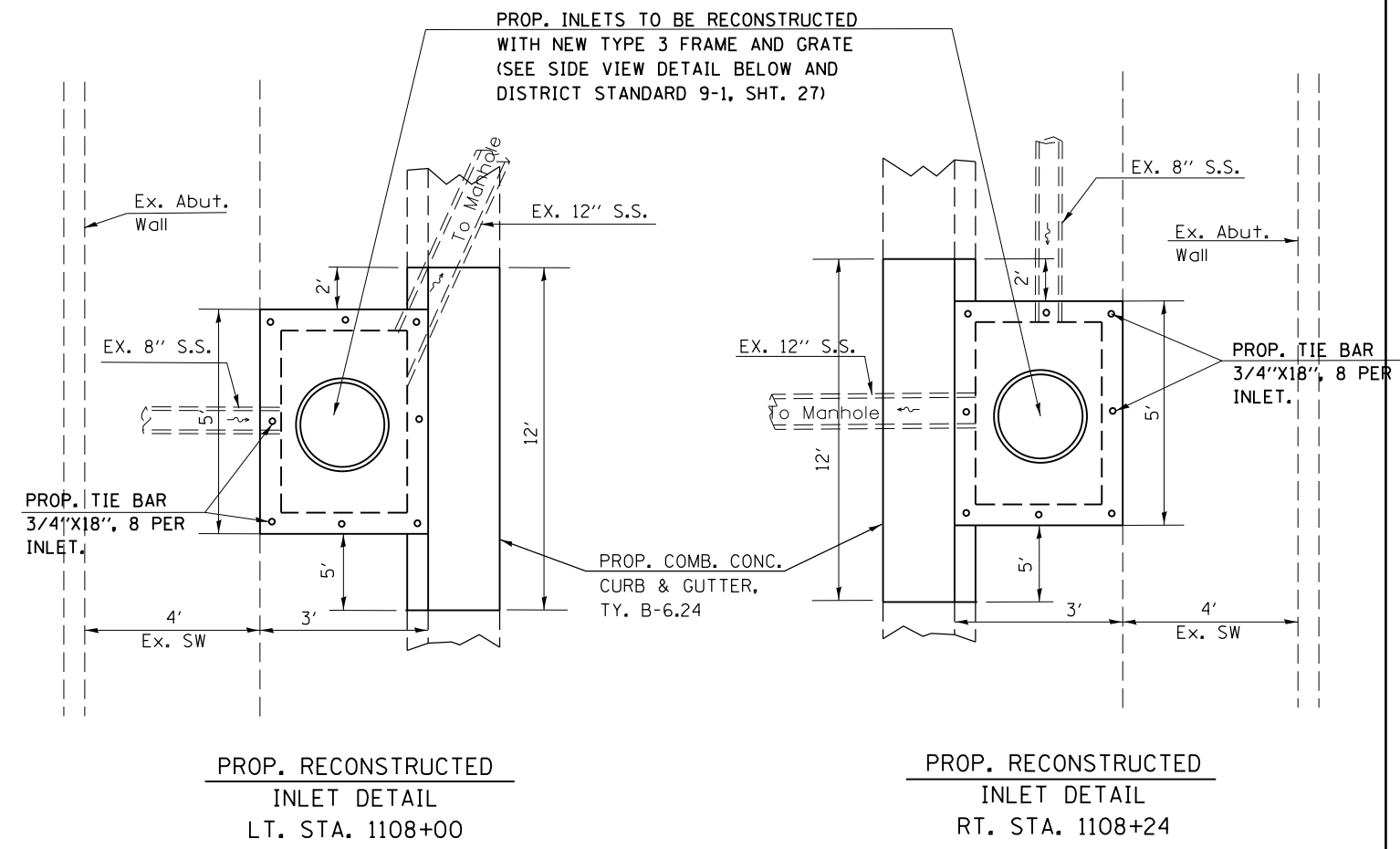


EXIST. COMB. CONC. CURB & GUTTER TO BE REMOVED & REPLACED - 85 FT. (SEE SPECIAL PROVISIONS)

EXIST. INLET LT. STA. 1108+00 INLETS TO BE RECONSTRUCTED WITH NEW TYPE 3 FRAME & GRATE (SEE SPEC. PROV. & DETAIL AT RIGHT)

EXIST. INLET RT. STA. 1108+00 INLETS TO BE RECONSTRUCTED WITH NEW TYPE 3 FRAME & GRATE (SEE SPEC. PROV., DETAIL AT RIGHT & NOTE 1 BELOW.)

NOTE 1. THE FIELD ENGINEER WILL DETERMINE PRIOR TO START-UP OF CONSTRUCTION IF PART OR ALL OF THE EXISTING INLETS ARE TO BE REMOVED. ADDITIONAL WORK AND MATERIALS REQUIRED TO REMOVE AND REPLACE BEYOND THE LIMITS SHOWN WILL BE PAID FOR PER ARTICLE 109.04.



LEGEND

EX. INLET AND COMB. CONC. CURB & GUTTER TO BE REMOVED. (INCLUDED IN COST OF PROP. RECONSTRUCTED INLETS WITH NEW TYPE 3 FRAME & GRATE)

FILE NAME =	USER NAME = mccordkr	DESIGNED -	REVISED -
et:\pw\work\p1dot\mccordkr\10381606\78404-sh1-plan.dgn		DRAWN -	REVISED -
		CHECKED -	REVISED -
		DATE -	REVISED -

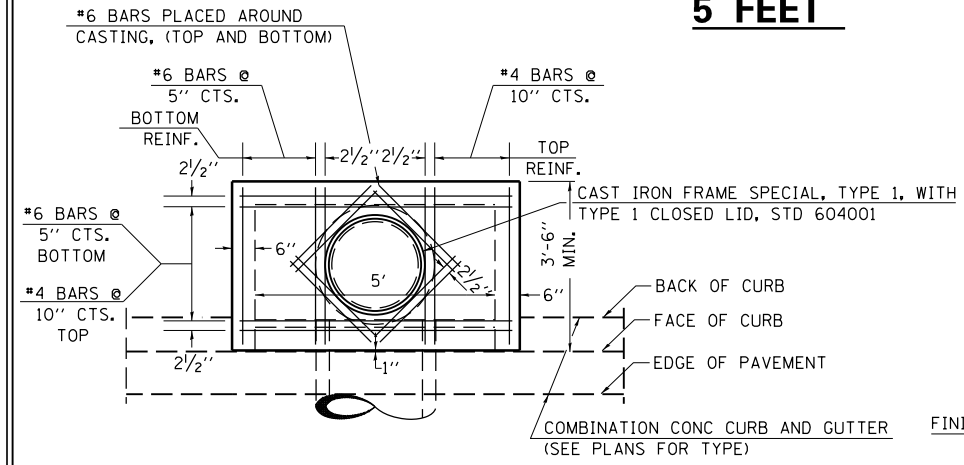
**STATE OF ILLINOIS
DEPARTMENT OF TRANSPORTATION**

INLETS TO BE RECONSTRUCTED DETAIL				
SCALE:	SHEET NO.	OF SHEETS	STA.	TO STA.

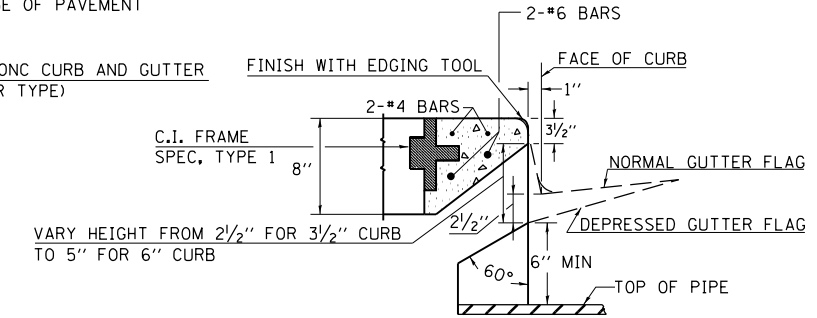
F.A. RTE.	SECTION	COUNTY	TOTAL SHEETS	SHEET NO.
	41RS-7	MASSAC	29	26
CONTRACT NO. 78404				
ILLINOIS FED. AID PROJECT				

DETAILS OF INLET SPECIAL, TYPE 3, 5 FEET

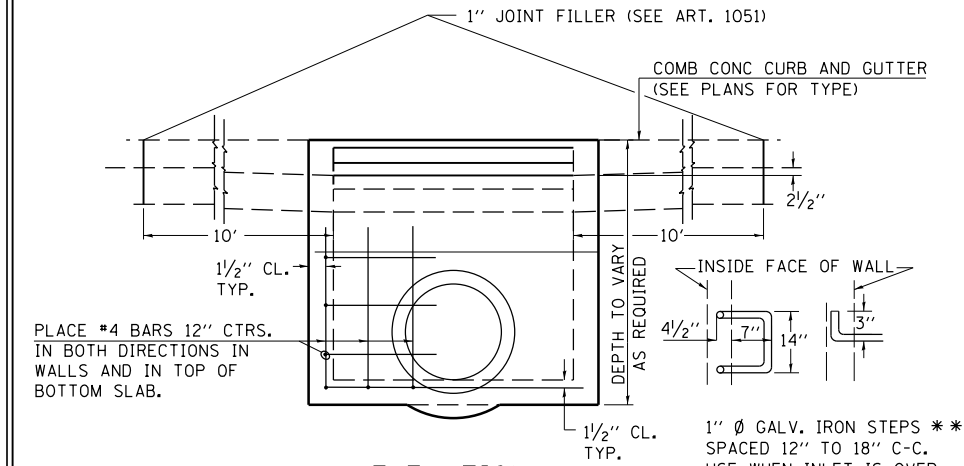
ONLY FOR REFERENCE WHEN
BUILDING INLETS TO BE
RECONSTRUCTED WITH
NEW TYPE 3 GRATE &
FRAME.



PLAN



SECTION AT WEIR



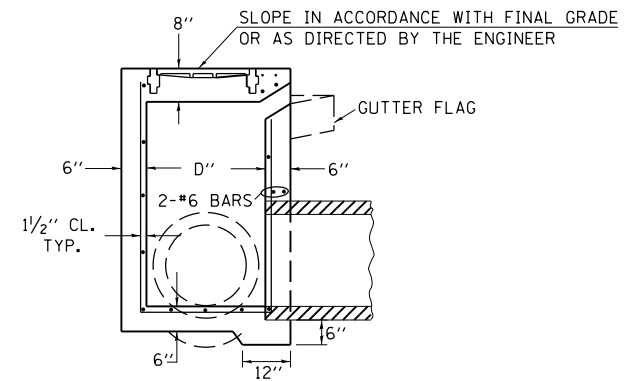
ELEVATION

DESIGN	PIPE DIA	"D"
A	18" & LESS	2'-6"
B	21" & 24"	3'-0"
C	27" & 30"	3'-7"
D	33" & 36"	4'-2"
E	42"	4'-9"
F	48"	5'-0"
G	54"	6'-1"

NOTES:

- PROVIDE 1/2" CLEARANCE TYP. ALL REINFORCEMENT UNLESS OTHERWISE SPECIFIED.
- CLASS SI CONCRETE SHALL BE USED THROUGHOUT. SET FACE OF INLET 1" BEHIND FACE OF CURB. DEPRESS GUTTER FLOWLINE AT INLET 2 1/2" BELOW NORMAL GUTTER FLOWLINE. CONSTRUCT TRANSITION IN FLOWLINE IN 10 FEET EACH SIDE OF INLET. PIPES TO BE CONNECTED TO INLET AS SHOWN ON STORM SEWER LAYOUT.
- INLETS WILL BE PAID FOR AT THE CONTRACT UNIT PRICE EACH FOR **INLET TO BE RECONSTRUCTED**. WHICH PRICE SHALL INCLUDE THE CAST IRON FRAME, SPECIAL, TYPE 1 WITH TYPE 1 CLOSED LID, THE REINFORCEMENT BARS, METAL STEPS AND JOINT FILLER.
- ** THE GALVANIZED IRON STEPS AS DETAILED HEREON ARE TYPICAL. STEPS OF OTHER DESIGN AND MATERIAL THAT WILL CONFORM TO THE MINIMUM REQUIREMENTS OF THE STEPS SHOWN. MAY BE USED WHEN APPROVED BY THE ENGINEER.
- IF THE INLET IS NOT CAST IN PLACE THEN THE INLET SHALL BE PRODUCED ACCORDING TO THE DEPARTMENT'S CURRENT POLICY MEMORANDUM, "QUALITY CONTROL/QUALITY ASSURANCE PROGRAM FOR PRECAST CONCRETE PRODUCTS".

1" Ø GALV. IRON STEPS **
SPACED 12" TO 18" C-C.
USE WHEN INLET IS OVER
4' DEEP.



SECTION

NOTE TO DESIGNER:
WHEN USING THIS STANDARD THE DESIGNER SHOULD ALSO CHECK BDE SPECIAL PROVISION 419 "PRECAST CONCRETE PRODUCTS".

REVISIONS			
REDRAWN	2-15-89	REVISED	3-26-08
REVISED	8-15-94	REVISED	
REVISED	1-19-99	REVISED	
STD.	9-1	REVISED	5-6-04
		REVISED	

FILE NAME =	USER NAME = mccordkr	DESIGNED -	REVISED -
c:\pwork\work\p1dot\mccordkr\ad0381606\78404\4-shit-plan.dgn		DRAWN -	REVISED -
	PLOT SCALE = 100.0000' / in.	CHECKED -	REVISED -
	PLOT DATE = 3/19/2014	DATE -	REVISED -

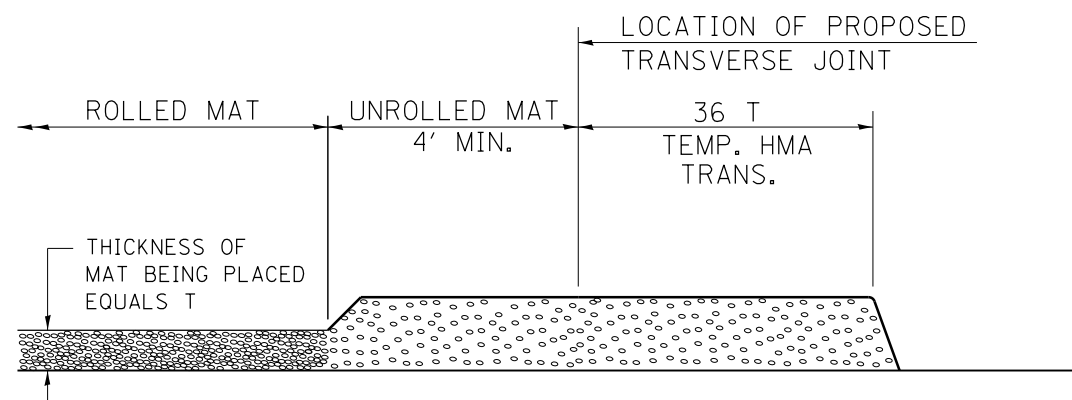
**STATE OF ILLINOIS
DEPARTMENT OF TRANSPORTATION**

DETAIL - INLET SPECIAL, TYPE 3, 5 FEET (FOR INFORMATION ONLY)			
SCALE:	SHEET NO.	OF SHEETS	STA. TO STA.

F.A. RTE.	SECTION	COUNTY	TOTAL SHEETS	SHEET NO.
	41RS-7	MASSAC	29	27
CONTRACT NO. 78404				
ILLINOIS FED. AID PROJECT				

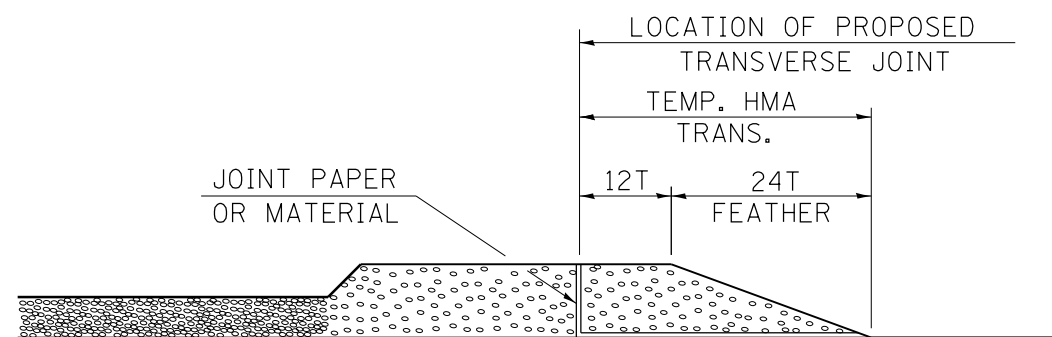
• FAU 9760 (US 45)

TEMPORARY HOT-MIX ASPHALT TRANSITIONS



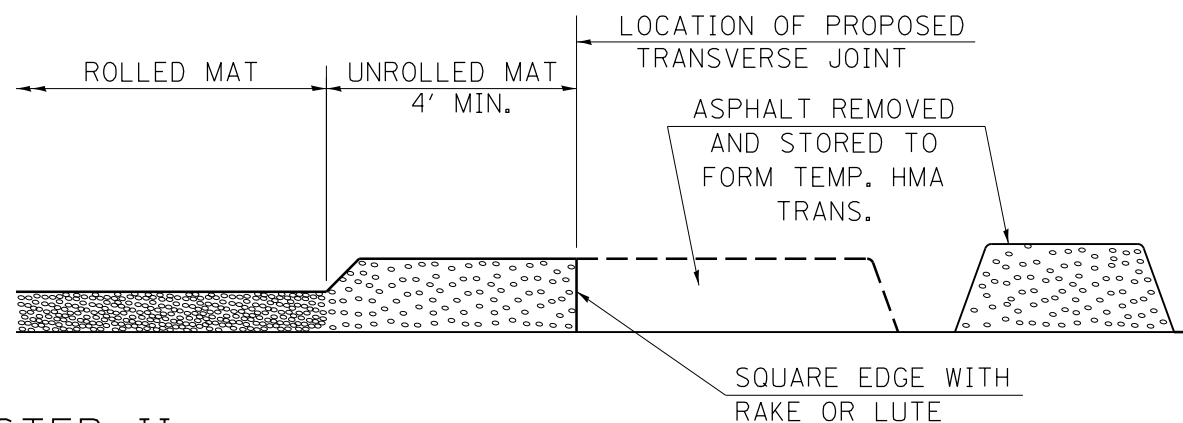
STEP I

1. PLACE HOT-MIX ASPHALT MAT, LENGTH 36 TIMES THE THICKNESS OF THE MAT BEING PLACED PAST THE PROPOSED TRANSVERSE JOINT LOCATION USING NORMAL OPERATING PROCEDURES.
2. EXTREME CARE SHOULD BE TAKEN TO MAINTAIN ENOUGH MATERIAL IN FRONT OF THE SCREED TO MAINTAIN REQUIRED PAVING DEPTH.



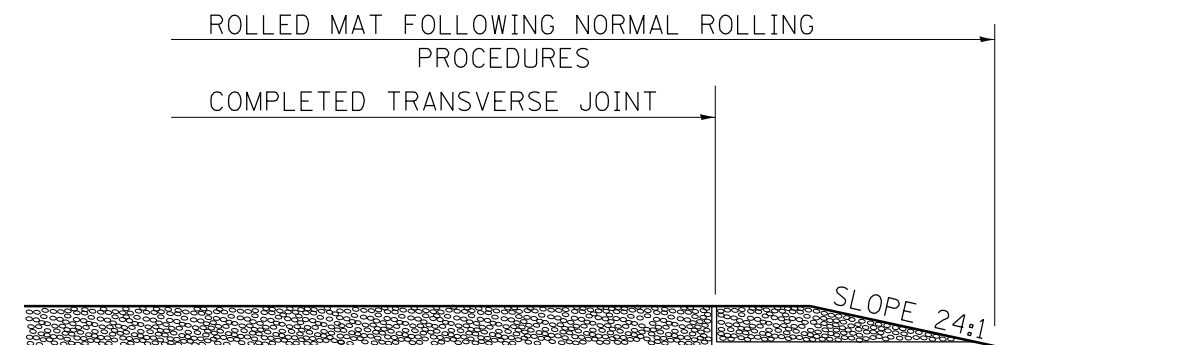
STEP III

1. JOINT PAPER OR OTHER PRESELECTED JOINT MATERIAL IS THEN PLACED IN THE CLEARED AREA AND THE EXCESS ASPHALT USED TO HAND FORM A TRANSITION TO THE DIMENSIONS SHOWN ABOVE.
2. NOTE THAT IN CONSTRUCTING THE TRANSITION, THE MAT DEPTH IS CONTINUED AS PART OF THE TRANSITION BEFORE FORMING THE FEATHER.



STEP II

1. MOVE THE PAVER OUT OF THE WAY AND REMOVE THE ASPHALT FROM THE AREA OF THE PROPOSED TEMPORARY HOT-MIX ASPHALT TRANSITION.
2. SQUARE UP THE END OF THE MAT WITH A RAKE OR LUTE.
3. NOTE THAT THE MAT WITHIN 4' OF THE END OF JOINT IS NOT TO BE ROLLED AT THIS TIME.



STEP IV

1. COMPLETE TEMPORARY TRANSITION BY ROLLING.
2. TO RESUME PAVING, AT THE JOINT, REMOVE TEMPORARY TRANSITION AND DISPOSE OF THE MATERIAL ACCORDING TO ART. 202.03 OF THE STD. SPECS. (COST INCLUDED IN THE CONTRACT).
3. CONSTRUCTING THE TEMPORARY TRANSITIONS WILL NOT BE PAID FOR SEPARATELY IN ACCORDANCE WITH ARTICLE 406.14 OF THE STANDARD SPECIFICATIONS.

REVISIONS	
REDRAWN	2-15-89
REVISED	8-16-94
REVISED	01-09-07
REVISED	

STD. 9-26

• FAU 9760 (US 45)

FILE NAME =	USER NAME = mccordkr	DESIGNED -	REVISED -
et:\pw\work\p\dot\mccordkr\d0381606\78404-4-sh-t-plan.dgn		DRAWN -	REVISED -
	PLOT SCALE = 100.0000' / 1in.	CHECKED -	REVISED -
	PLOT DATE = 3/19/2014	DATE -	REVISED -

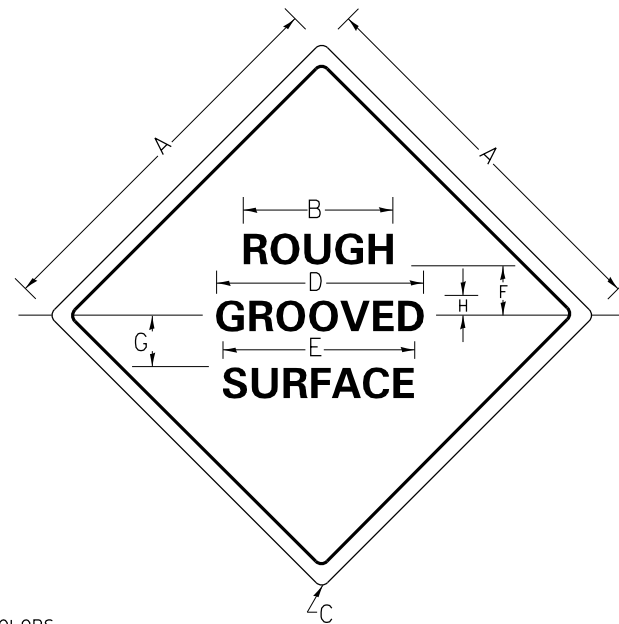
**STATE OF ILLINOIS
DEPARTMENT OF TRANSPORTATION**

**DETAIL: TEMPORARY HOT-MIX
ASPHALT TRANSITIONS**

SCALE: SHEET NO. OF SHEETS STA. TO STA.

F.A. RTE.	SECTION	COUNTY	TOTAL SHEETS	SHEET NO.
	41RS-7	MASSAC	29	28
CONTRACT NO. 78404				
ILLINOIS FED. AID PROJECT				

ILLINOIS STANDARD
W8-I106



COLORS:

LEGEND AND BORDER BLACK NON-REFLECTORIZED
BACKGROUND ORANGE REFLECTORIZED

SIGN SIZE	DIMENSIONS							
	A	B	C	D	E	F	G	H
48x48	48.0	24.1	3.0	34.0	33.0	6.0	13.0	3.5

SIGN SIZE	SERIES			MAR-GIN	BOR-DER	BLANK STD.
	LINES					
	1	2	3			
48x48	7C	7C	7C	0.8	1.2	B4-48D

NOTE: PRIOR TO ALLOWING TRAFFIC ON ANY PORTION OF THE ROADWAY THAT HAS BEEN COLDMILLED, THE CONTRACTOR SHALL HAVE ERECTED "ROUGH GROOVED SURFACE" SIGNS THAT CONFORM TO THE ABOVE DETAILS. A MINIMUM OF ONE SIGN AT EACH END OF THE IMPROVEMENT WILL BE REQUIRED. THE CONTRACTOR SHALL MAINTAIN THE "ROUGH GROOVED SURFACE" SIGNS UNTIL THE COLDMILLED SURFACE IS COVERED WITH LEVELING BINDER OR SURFACE COARSE.

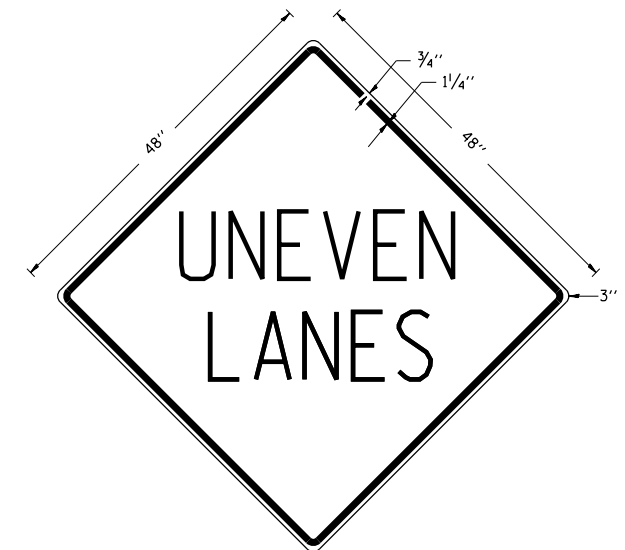
IF AT ANY TIME THE SIGNS ARE IN PLACE BUT NOT APPLICABLE, THEY SHALL BE TURNED FROM THE VIEW OF MOTORISTS OR COVERED AS DIRECTED BY THE ENGINEER.

THE COST OF FURNISHING, ERECTING, MAINTAINING, AND REMOVING THE REQUIRED SIGNS SHALL BE INCLUDED IN THE CONTRACT.

ALL DIMENSIONS ARE IN INCHES UNLESS OTHERWISE NOTED.

REVISIONS
REDRAWN 10-23-01
STD. 9-39

UNEVEN LANES SIGN
W8-11 (48" x 48")



COLORS:

LEGEND AND BORDER - BLACK NON-REFLECTORIZED
BACKGROUND - ORANGE REFLECTORIZED

NOTE: PRIOR TO ALLOWING TRAFFIC ON ANY PORTION OF THE ROADWAY THAT HAS BEEN COLDMILLED OR BEFORE RESURFACING OPERATIONS BEGIN, THE CONTRACTOR SHALL HAVE ERECTED "UNEVEN PAVEMENT" SIGNS THAT CONFORM TO THE ABOVE DETAILS. A MINIMUM OF ONE SIGN AT EACH END OF THE IMPROVEMENT WILL BE REQUIRED. THE CONTRACTOR SHALL MAINTAIN THE "UNEVEN PAVEMENT" SIGNS UNTIL THE RESURFACING OPERATIONS ARE COMPLETED.

IF AT ANY TIME THE SIGNS ARE IN PLACE BUT NOT APPLICABLE, THEY SHALL BE TURNED FROM THE VIEW OF MOTORISTS OR COVERED AS DIRECTED BY THE ENGINEER.

THE COST OF FURNISHING, ERECTING, MAINTAINING, AND REMOVING THE REQUIRED SIGNS SHALL BE INCLUDED IN THE CONTRACT.

REVISIONS
DRAWN 2-15-89
REVISED 4-6-93
REDRAWN 7-23-04
REVISED

STD. 9-41

• FAU 9760 (US 45)

FILE NAME =	USER NAME = mccordkr	DESIGNED -	REVISED -
c:\pwwork\pwwork\mccordkr\d0381606\78404-sh1-plan.dgn		DRAWN -	REVISED -
PLOT SCALE = 100.0000' / in.		CHECKED -	REVISED -
PLOT DATE = 3/19/2014		DATE -	REVISED -

STATE OF ILLINOIS
DEPARTMENT OF TRANSPORTATION

DETAILS: UNEVEN LANE SIGNS,
ROUGH GROOVED SURFACE SIGN

SCALE: SHEET NO. OF SHEETS STA. TO STA.

F.A. RTE.	SECTION	COUNTY	TOTAL SHEETS	SHEET NO.
•	41RS-7	MASSAC	29	29
CONTRACT NO. 78404				
ILLINOIS FED. AID PROJECT				