

**INDEX OF SHEETS:**

- 1 COVER SHEET
- 2 SUMMARY OF QUANTITIES
- 3 GENERAL NOTES AND SCHEDULE OF QUANTITIES
- 4 TYPICAL SECTIONS AND DETAILS
- 5 PLAN AND PROFILE
- 6 EROSION CONTROL PLAN
- 7 GENERAL PLAN AND ELEVATION
- 8 RIPRAP AND PILE LAYOUT
- 9 21" x 48" PPC DECK BEAM
- 10 21" x 48" PPC DECK BEAM DETAILS
- 11 WEST ABUTMENT DETAILS
- 12 EAST ABUTMENT DETAILS
- 13 STEEL RAILING, TYPE S1 DETAILS
- 14 METAL SHELL PILE DETAILS
- 15 BORING LOGS
- 16-18 CROSS SECTIONS

**STANDARDS:**

- 000001-06 STANDARD SYMBOLS, ABBREVIATIONS, AND PATTERNS
- 280001-07 TEMPORARY EROSION CONTROL SYSTEMS
- 515001-03 NAME PLATE FOR BRIDGES
- 542401-01 METAL END SECTION FOR PIPE CULVERTS
- 635006-03 REFLECTOR AND TERMINAL MARKER PLACEMENT
- 701901-03 TRAFFIC CONTROL DEVICES
- 720011-01 METAL POSTS FOR SIGNS, MARKERS & DELINEATORS
- 728001-01 TELESCOPING STEEL SIGN SUPPORT
- 729001-01 APPLICATIONS OF TYPES A & B METAL POSTS (FOR SIGNS & MARKERS)
- BLR 21-9 TYPICAL APPLICATION OF TRAFFIC CONTROL DEVICES FOR CONSTRUCTION ON RURAL LOCAL HIGHWAYS
- BLR 22-7 TYPICAL APPLICATION OF TRAFFIC CONTROL DEVICES FOR CONSTRUCTION ON RURAL LOCAL HIGHWAYS

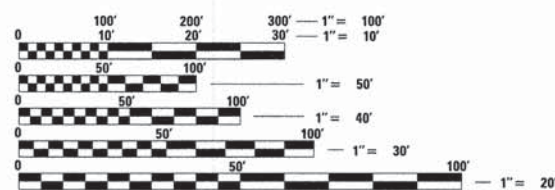
**STATE OF ILLINOIS**  
**DEPARTMENT OF TRANSPORTATION**  
**DIVISION OF HIGHWAYS**

**PLANS FOR PROPOSED  
 FEDERAL AID PROJECT  
 HIGHWAY BRIDGE PROGRAM (FY-14)**

**TOWNSHIP ROUTE 175 (1950 N)  
 SECTION 08-15120-00-BR  
 PROJECT BROS-0011(096)  
 STRUCTURE REPLACEMENT  
 BUREAU COUNTY  
 MANLIUS ROAD DISTRICT  
 2014**

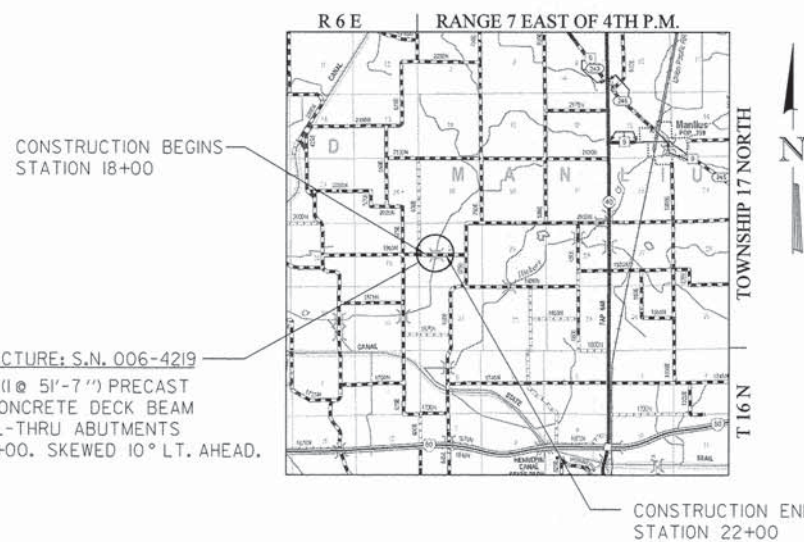
C-93-057-13

TWP. RTE.	SECTION	COUNTY	TOTAL SHEETS	SHEET NO.
175	08-15120-00-BR	BUREAU	18	1
ILLINOIS CONTRACT NO. 87552				



FULL SIZE PLANS HAVE BEEN PREPARED USING STANDARD ENGINEERING SCALES. REDUCED SIZED PLANS WILL NOT CONFORM TO STANDARD SCALES. IN MAKING MEASUREMENTS ON REDUCED PLANS, THE ABOVE SCALES MAY BE USED.

**J.U.L.I.E.**  
 JOINT UTILITY LOCATION INFORMATION FOR EXCAVATION  
 1-800-892-0123  
 OR 811



**UTILITIES:**  
 FRONTIER COMMUNICATIONS  
 ATTN: GARRETT BURT  
 112 ELM STREET  
 SYCAMORE, IL 60178  
 (815) 895-1538

CORN BELT ENERGY CORP.  
 ATTN: IAN CARDOSI  
 1702 W. PERU  
 PRINCETON, IL 61356  
 (309) 662-5330 EXT. 301

BUREAU COUNTY HIGHWAY DEPARTMENT		
APPROVED	<u>4/9</u>	2014
	<i>[Signature]</i>	MANLIUS TOWNSHIP ROAD COMMISSIONER
APPROVED	<u>4/9</u>	2014
	<i>[Signature]</i>	BUREAU COUNTY ENGINEER
PASSED	<u>4-9</u>	2014
	<i>[Signature]</i>	DISTRICT 3 LOCAL ROADS & STREETS ENGINEER
RELEASING FOR BID BASED ON LIMITED REVIEW	<u>4-9</u>	2014
	<i>[Signature]</i>	DEPUTY DIRECTOR OF HIGHWAYS, REGION 2 ENGINEER

**PROJECT ENGINEER: MWC**  
**PROJECT MANAGER: BKC**  
**CONTRACT NO. 87552**

**FUNCTIONAL CLASSIFICATION**  
**LOCAL ROAD (NON-URBAN)**  
**DESIGN SPEED 30 MPH**  
**2014 ADT - 130**  
**3R GUIDELINES**

GROSS LENGTH = 400 FT. = 0.076 MILE  
 NET LENGTH = 400 FT. = 0.076 MILE

*Brian K. Converse*  
 DATE: 4/9/2014  
 EXPIRES 11/30/15



FILE = S:\PROJECTS\2013\BROS013\_BROUDESIGN\STRUCT\08-manlius\1895013\_Cover\_Sheet.dwg

**SUMMARY OF QUANTITIES**

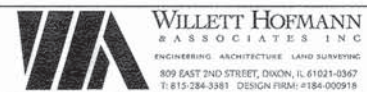
CONSTRUCTION TYPE CODE: 0011

PAY CODE	QUANTITY	UNIT	ITEM
20300100	45	CU. YD.	CHANNEL EXCAVATION
25100630	1,351	SQ. YD.	EROSION CONTROL BLANKET
28000250	28	POUND	TEMPORARY EROSION CONTROL SEEDING
28000305	30	FOOT	TEMPORARY DITCH CHECKS
28000400	402	FOOT	PERIMETER EROSION BARRIER
28000500	2	EACH	INLET AND PIPE PROTECTION
*40200100	523	TON	AGGREGATE SURFACE COURSE, TYPE A
*40200800	52	TON	AGGREGATE SURFACE COURSE, TYPE B
*50100100	1	EACH	REMOVAL OF EXISTING STRUCTURES
50105220	106	FOOT	PIPE CULVERT REMOVAL
*50300225	24.2	CU. YD.	CONCRETE STRUCTURES
50400405	1,238	SQ. FT.	PRECAST PRESTRESSED CONCRETE DECK BEAMS (21" DEPTH)
50800105	2,620	POUND	REINFORCEMENT BARS
+ 50900205	106	FOOT	STEEL RAILING, TYPE S1
51200957	258	FOOT	FURNISHING METAL SHELL PILES 12" X 0.250"
51202305	258	FOOT	DRIVING PILES
51203200	2	EACH	TEST PILE METAL SHELLS
51500100	1	EACH	NAME PLATES
54200220	72	FOOT	PIPE CUVLERTS, CLASS D, TYPE 1 15"
54213870	2	EACH	STEEL END SECTIONS 15"
67100100	1	L. SUM	MOBILIZATION
*X2020410	256	CU. YD.	EARTH EXCAVATION (SPECIAL)
*X2070302	98	TON	POROUS GRANULAR EMBANKMENT, SPECIAL
*X2501100	0.28	ACRE	SEEDING, CLASS 3 (SPECIAL)
*X2810210	555	TON	STONE RIPRAP, CLASS A5 (SPECIAL)
*X7010216	1	L. SUM	TRAFFIC CONTROL AND PROTECTION, (SPECIAL)
Z0013798	1	L. SUM	CONSTRUCTION LAYOUT

\*See B.L.R. 11310 in the contract documents for Special Provisions.

+Specialty Item

FILE : S:\PROJECTS\2013\1055013.BCH\DESIGN\STRUCT\Drawings\1055013.Summary.Quantities.dgn



DESIGNED - MCW	REVISED -
CHECKED - MAC	REVISED -
DRAWN - MCW	REVISED -
CHECKED - MAC	REVISED -

**BUREAU COUNTY  
T.R. 175 (1950 NORTH) OVER SMITH DITCH  
STATION 20 + 00**

**SUMMARY OF QUANTITIES  
STRUCTURE NO. 006-4219**

TWP. RTE.	SECTION	COUNTY	TOTAL SHEETS	SHEET NO.
175	08-15120-00-BR	BUREAU	18	2
WHA* 1055013		CONTRACT NO. 87552		
[ILLINOIS] FED. AID PROJECT BROS-00110961				

**GENERAL NOTES**

EXISTING STRUCTURES (INCLUDING FOUNDATIONS, WALLS, CISTERNS, WELLS, OR OTHER UNDERGROUND STRUCTURES) WITHIN THE RIGHT OF WAY SHALL BE REMOVED IN ACCORDANCE WITH ARTICLE 501.04 AND 501.05 OF THE STANDARD SPECIFICATIONS, WITHOUT ADDITIONAL COMPENSATION, UNLESS OTHERWISE NOTED IN THE PLANS OR SPECIAL PROVISIONS.

THE CONTRACTOR SHALL SEED ALL DISTURBED AREAS WITHIN THE PROJECT LIMITS.

THE FINAL TOP FOUR INCHES OF SOIL IN ANY RIGHT OF WAY AREA DISTURBED BY THE CONTRACTOR MUST BE A COHESIVE SOIL CAPABLE OF SUPPORTING VEGETATION AND APPROVED BY THE ENGINEER.

NO OVERHAUL HAS BEEN COMPUTED AND NONE SHALL BE PAID FOR FROM ANY SOURCE.

ALL BORROW/WASTE/USE SITES MUST BE APPROVED BY THE DEPARTMENT PRIOR TO REMOVING ANY MATERIAL FROM THE PROJECT OR INITIATING ANY EARTHMOVING ACTIVITIES, INCLUDING TEMPORARY STOCKPILING OUTSIDE THE LIMITS OF CONSTRUCTION.

THE CONTRACTOR SHALL BE RESPONSIBLE FOR PROTECTING UTILITY PROPERTY DURING CONSTRUCTION OPERATIONS AS OUTLINED IN ARTICLE 107.31 OF THE STANDARD SPECIFICATIONS.

ALL TELEPHONE AND ELECTRIC POLES, GAS PIPES, ETC. IN THE WAY OF THE IMPROVEMENTS SHALL BE MOVED BY THE UTILITIES PRIOR TO CONSTRUCTION AND SHALL NOT BE INCLUDED IN THE CONTRACT. THE CONTRACTOR SHALL NOTIFY THE RESPECTIVE UTILITIES TO MAKE THE NECESSARY ADJUSTMENTS PRIOR TO THIS CONSTRUCTION.

THE LOCATION AND ELEVATION OF THE VARIOUS UNDERGROUND UTILITIES AS SHOWN ON THE PLANS ARE NOT TO BE TAKEN AS EXACT. THE CONTRACTOR SHALL USE SPECIAL CARE WHEN CONDUCTING CONSTRUCTION OPERATIONS NEAR THEM TO PREVENT DAMAGE.

THE UTILITIES LOCATED WITHIN THE PROJECT LIMITS OR IMMEDIATELY ADJACENT TO THE PROJECT CONSTRUCTION LIMITS INCLUDE:

CORN BELT ENERGY CORP. 1702 W. PERU PRINCETON, IL 61356 ATTN: IAN CAROSI (309) 662-5330 EXT. 301	FRONTIER COMMUNICATIONS 112 ELM STREET SYCAMORE, IL 60178 ATTN: GARRETT BURT (815) 895-1538
--------------------------------------------------------------------------------------------------------------	---------------------------------------------------------------------------------------------------------

A MINIMUM OF 48 HOURS ADVANCE NOTICE IS REQUIRED FOR NON-EMERGENCY WORK.

A NATIONWIDE 404 PERMIT HAS BEEN ISSUED FOR THIS PROJECT AND THE CONDITIONS OF THAT PERMIT MUST BE ADHERED TO.

WHERE SECTION OR SUBSECTION MONUMENTS ARE ENCOUNTERED, THE ENGINEER SHALL BE NOTIFIED BEFORE SUCH MONUMENTS ARE REMOVED. THE CONTRACTOR SHALL PROTECT AND CAREFULLY PRESERVE ALL PROPERTY MARKERS, MONUMENTS, AND RIGHT OF WAY PINS UNTIL THE OWNER, AN AUTHORIZED SURVEYOR, OR AGENT HAS WITNESSED OR OTHERWISE REFERENCED THEIR LOCATION. ANY PROPERTY MARKERS, SECTION OR SUBSECTION MONUMENTS UNLESS REFERENCED, DAMAGED BY THE CONTRACTOR SHALL BE REPLACED AT THE EXPENSE OF THE CONTRACTOR.

EXISTING MAIL BOXES, STREET SIGNS, AND TRAFFIC SIGNS THAT ARE WITHIN THE CONSTRUCTION LIMITS SHALL BE REMOVED AND RESET BY THE CONTRACTOR UNLESS OTHERWISE NOTED. COST OF REMOVING AND RESETTING TO BE INCLUDED IN THE CONTRACT UNIT PRICE BID PER CUBIC YARD FOR EARTH EXCAVATION (SPECIAL).

T.R. 175 EARTHWORK TOTALS					
EARTH EXCAVATION (SPECIAL) X2020410	EARTH EXCAVATION ADJUSTED FOR SHRINKAGE 25%	EMBANKMENT	CHANNEL EXCAVATION 20300100	CHANNEL EXCAVATION ADJUSTED FOR SHRINKAGE 62.5%	EARTHWORK BALANCE WASTE
CU YD	CU YD	CU YD	CU YD	CU YD	CU YD
256	192	102	45	17	107

**SCHEDULE OF QUANTITIES**

EROSION CONTROL BLANKET		
LOCATION	SO YD	REMARKS
RT. STA. 18+00 - 22+00	676	
LT. STA. 18+00 - 22+00	675	
TOTAL 1,351 SO YD		

TEMPORARY EROSION CONTROL SEEDING		
LOCATION	POUND	REMARKS
RT. STA. 18+00 - 22+00	14	100 POUNDS/ACRE
LT. STA. 18+00 - 22+00	14	100 POUNDS/ACRE
TOTAL 28 POUND		

TEMPORARY DITCH CHECKS		
LOCATION	FOOT	REMARKS
RT. STA. 18+30	10	
RT. STA. 20+50	10	
LT. STA. 19+50	10	
TOTAL 30 FOOT		

PERIMETER EROSION BARRIER		
LOCATION	FOOT	REMARKS
RT. STA. 18+00 - 19+40	140	
RT. STA. 20+20 - 21+00	80	
LT. STA. 18+00 - 19+82	182	
TOTAL 402 FOOT		

INLET AND PIPE PROTECTION		
LOCATION	EACH	REMARKS
RT. STA. 19+25	1	UPSTREAM SIDE
LT. STA. 20+75	1	UPSTREAM SIDE
TOTAL 2 EACH		

AGGREGATE SURFACE COURSE, TYPE A		
LOCATION	TON	REMARKS
STA. 18+00.00 - 19+73.53	261	12"
STA. 20+26.47 - 22+00.00	262	12"
TOTAL 523 TON		

AGGREGATE SURFACE COURSE, TYPE B		
LOCATION	TON	REMARKS
STA. 18+00.00 - 19+73.53	26	8"
STA. 20+26.47 - 22+00.00	26	8"
TOTAL 52 TON		

PIPE CULVERT REMOVAL		
LOCATION	FOOT	REMARKS
F. E. R. STA. 19+46	38	
LT. STA. 19+66 - 19+83	18	
F. E. L. STA. 20+54	50	
TOTAL 106 FOOT		

PIPE CULVERTS, CLASS D, TYPE 1 15"		
LOCATION	FOOT	REMARKS
F. E. R. STA. 19+46	36	
F. E. L. STA. 20+54	36	
TOTAL 72 FOOT		

STEEL END SECTIONS 15"		
LOCATION	EACH	REMARKS
F. E. R. STA. 19+46	1	UPSTREAM SIDE
F. E. L. STA. 20+54	1	UPSTREAM SIDE
TOTAL 2 EACH		

SEEDING, CLASS 3 (SPECIAL)		
LOCATION	ACRE	REMARKS
RT. STA. 18+00 - 22+00	0.14	
LT. STA. 18+00 - 22+00	0.14	
TOTAL 0.28 ACRE		

FILE = S:\PROJECTS\2015\1055013\BCH\DESIGN\STRUCT\Quantity\ScheduleOfQuantities.dgn

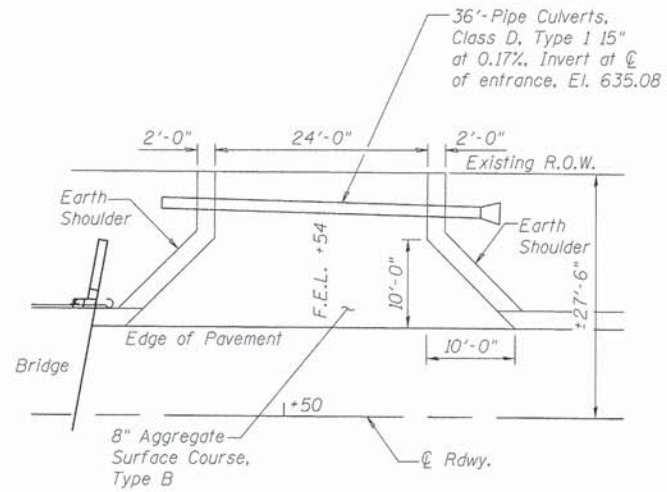


DESIGNED - MCW	REVISED -
CHECKED - MAC	REVISED -
DRAWN - MAC	REVISED -
CHECKED - BKC	REVISED -

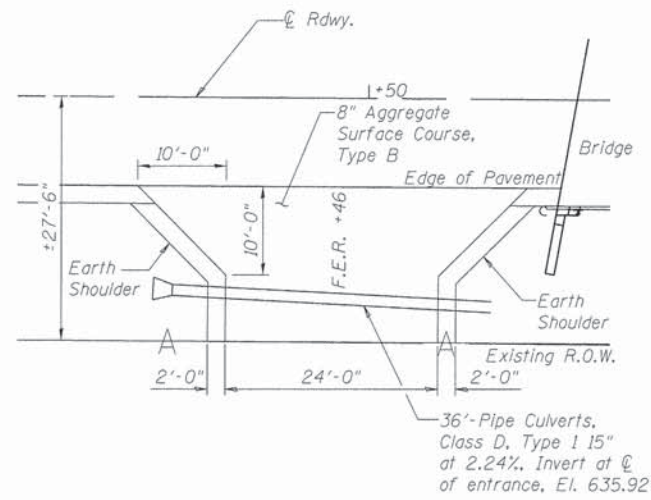
**BUREAU COUNTY**  
**T.R. 175 (1950 NORTH) OVER SMITH DITCH**  
**STATION 20+00**

**GENERAL NOTES AND SCHEDULE OF QUANTITIES**  
**STRUCTURE NO. 006-4219**

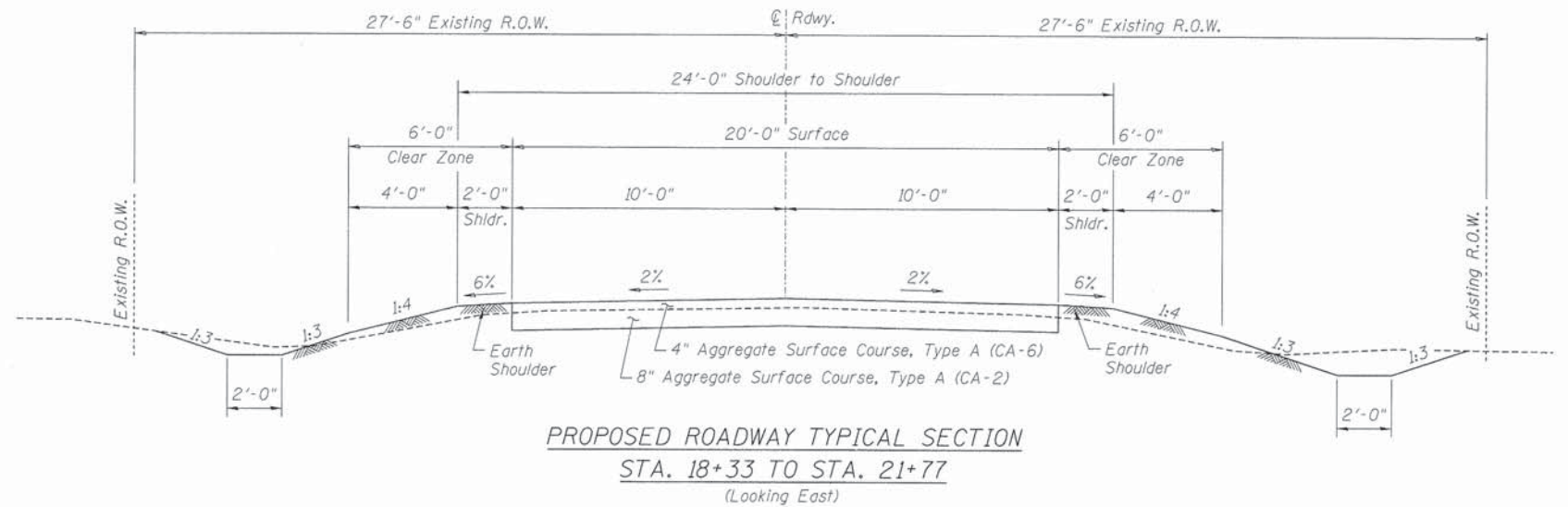
TWP. RTE.	SECTION	COUNTY	TOTAL SHEETS	SHEET NO.
175	08-15120-00-BR	BUREAU	18	3
WHA* 1055013		CONTRACT NO. 87552		
[ILLINOIS] FED. AID PROJECT BROS-00110961				



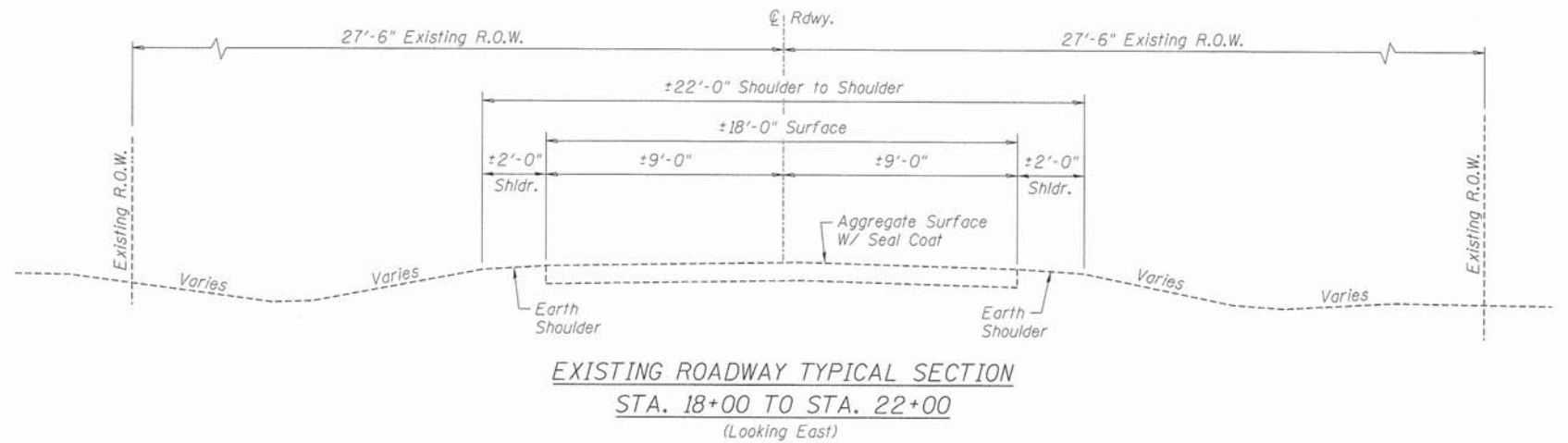
FIELD ENTRANCE DETAIL



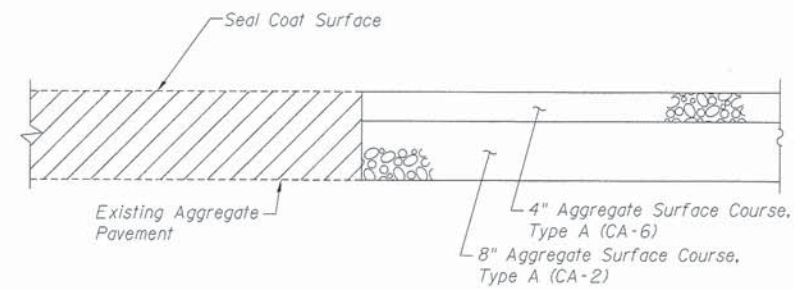
FIELD ENTRANCE DETAIL



PROPOSED ROADWAY TYPICAL SECTION  
STA. 18+33 TO STA. 21+77  
(Looking East)



EXISTING ROADWAY TYPICAL SECTION  
STA. 18+00 TO STA. 22+00  
(Looking East)



TYPICAL CORE JOINT DETAIL  
Stations 18+00 & 22+00

FILE = S:\PROJECTS\2015\1055013\_BCH\DESIGN\STRUCT\10-avrgs\1055013\_Typical Sections.dgn



DESIGNED - MAC	REVISED -
CHECKED - MCW	REVISED -
DRAWN - DAN	REVISED -
CHECKED - BKC	REVISED -

**BUREAU COUNTY**  
**T.R. 175 (1950 NORTH) OVER SMITH DITCH**  
**STATION 20+00**

**TYPICAL SECTIONS AND DETAILS**  
**STRUCTURE NO. 006-4219**

TWP. RTE.	SECTION	COUNTY	TOTAL SHEETS	SHEET NO.
175	08-15120-00-BR	BUREAU	18	4
WHA# 1055D13		CONTRACT NO. 87552		

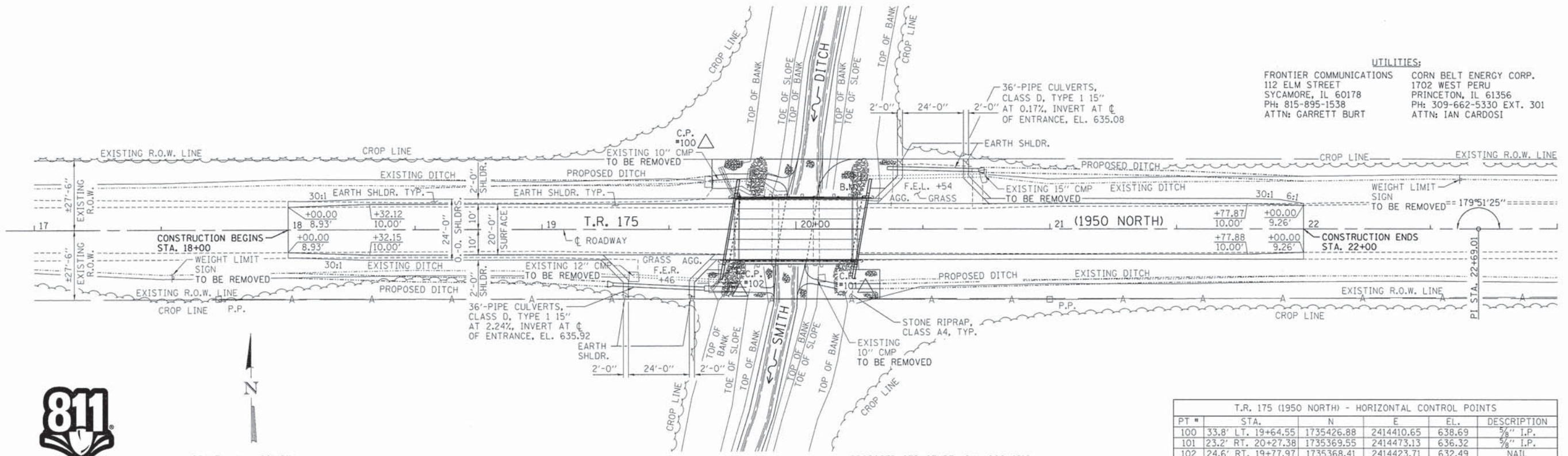
[ILLINOIS] FED. AID PROJECT BR05-00110961

BENCH MARK #400: RAILROAD SPIKE IN 2ND POWER POLE WEST OF BRIDGE, ±25.1' RT. OF STA. 14+50.50, EL. 648.77

BENCH MARK #401: CHIS. "□" ON NORTHEAST CORNER OF BRIDGE HEADWALL, ±12.3' LT. OF STA. 20+23.97, EL. 639.49

BENCH MARK #402: RAILROAD SPIKE IN 2ND POWER POLE EAST OF BRIDGE, ±26.9' RT. OF STA. 24+23.05, EL. 638.76

UTILITIES:  
 FRONTIER COMMUNICATIONS 112 ELM STREET SYCAMORE, IL 60178 PH: 815-895-1538 ATTN: GARRETT BURT  
 CORN BELT ENERGY CORP. 1702 WEST PERU PRINCETON, IL 61356 PH: 309-662-5330 EXT. 301 ATTN: IAN CARDOSI



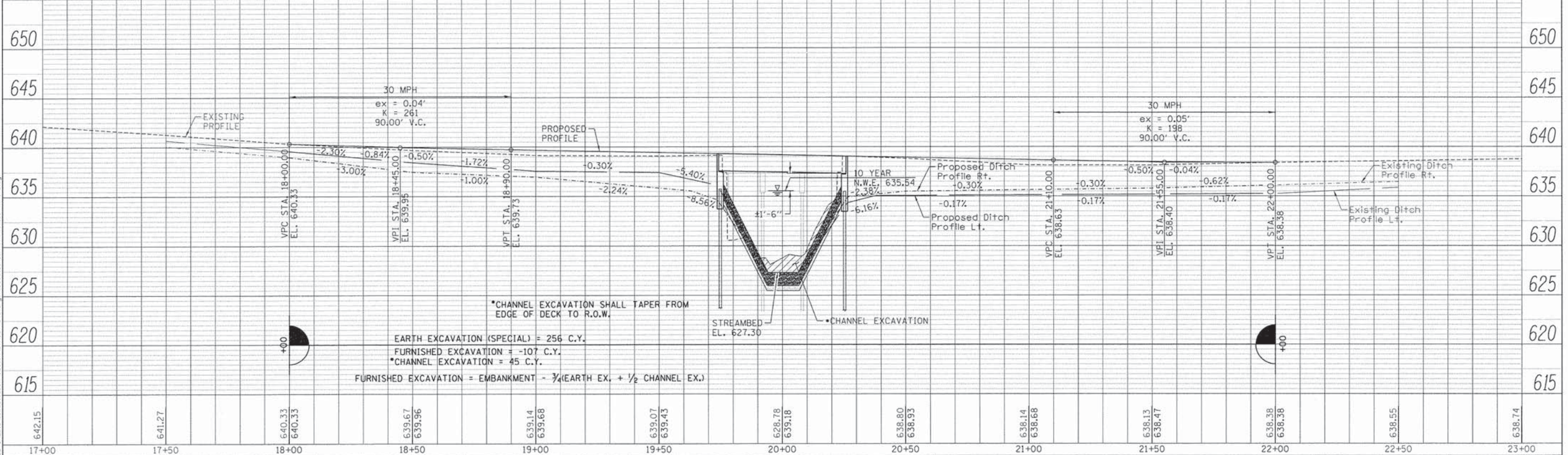
Know what's below.  
Call before you dig.



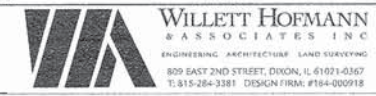
EXISTING STRUCTURE; S.N. 006-4212  
 A THREE SPAN (15'-6"; 16'-0"; 15'-6") PRECAST, REINFORCED CONCRETE CHANNEL BEAM BRIDGE ON SPILL-THRU ABUTMENTS WITH TIMBER PILES AT STATION 20+00. NO SKEW.

PROPOSED STRUCTURE; S.N. 006-4219  
 A SINGLE SPAN (1 @ 51'-7") PRECAST, PRESTRESSED CONCRETE DECK BEAM BRIDGE ON SPILL-THRU ABUTMENTS WITH METAL SHELL PILES AT STATION 20+00. 10° SKEW LT AHEAD.

T.R. 175 (1950 NORTH) - HORIZONTAL CONTROL POINTS					
PT #	STA.	N	E	EL.	DESCRIPTION
100	33.8' LT. 19+64.55	1735426.88	2414410.65	638.69	3/8" I.P.
101	23.2' RT. 20+27.38	1735369.55	2414473.13	636.32	3/8" I.P.
102	24.6' RT. 19+77.97	1735368.41	2414423.71	632.49	NAIL
103	19.4' RT. 25+01.59	1735370.97	2414947.41	637.32	3/8" I.P.



\*CHANNEL EXCAVATION SHALL TAPER FROM EDGE OF DECK TO R.O.W.  
 EARTH EXCAVATION (SPECIAL) = 256 C.Y.  
 FURNISHED EXCAVATION = -107 C.Y.  
 \*CHANNEL EXCAVATION = 45 C.Y.  
 FURNISHED EXCAVATION = EMBANKMENT - 3/4(EARTH EX. + 1/2 CHANNEL EX.)



DESIGNED - MCW	REVISED -
CHECKED - MAC	REVISED -
DRAWN - RDA	REVISED -
CHECKED - BKC	REVISED -

**BUREAU COUNTY**  
**T.R. 175 (1950 NORTH) OVER SMITH DITCH**  
**STATION 20+00**

**PLAN AND PROFILE**  
**STRUCTURE NO. 006-4219**  
 SCALE: 1" = 20'-0" SHEET NO. 1 OF 1 SHEET STA. 17+00 TO STA. 23+00

TWP. RTE. 175	SECTION 08-15120-00-BR	COUNTY BUREAU	TOTAL SHEETS 18	SHEET NO. 5
WHA# 1055013		CONTRACT NO. 87552		
ILLINOIS FED. AID PROJECT BROS-00110961				

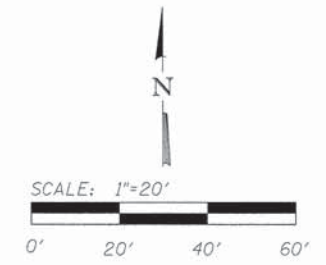
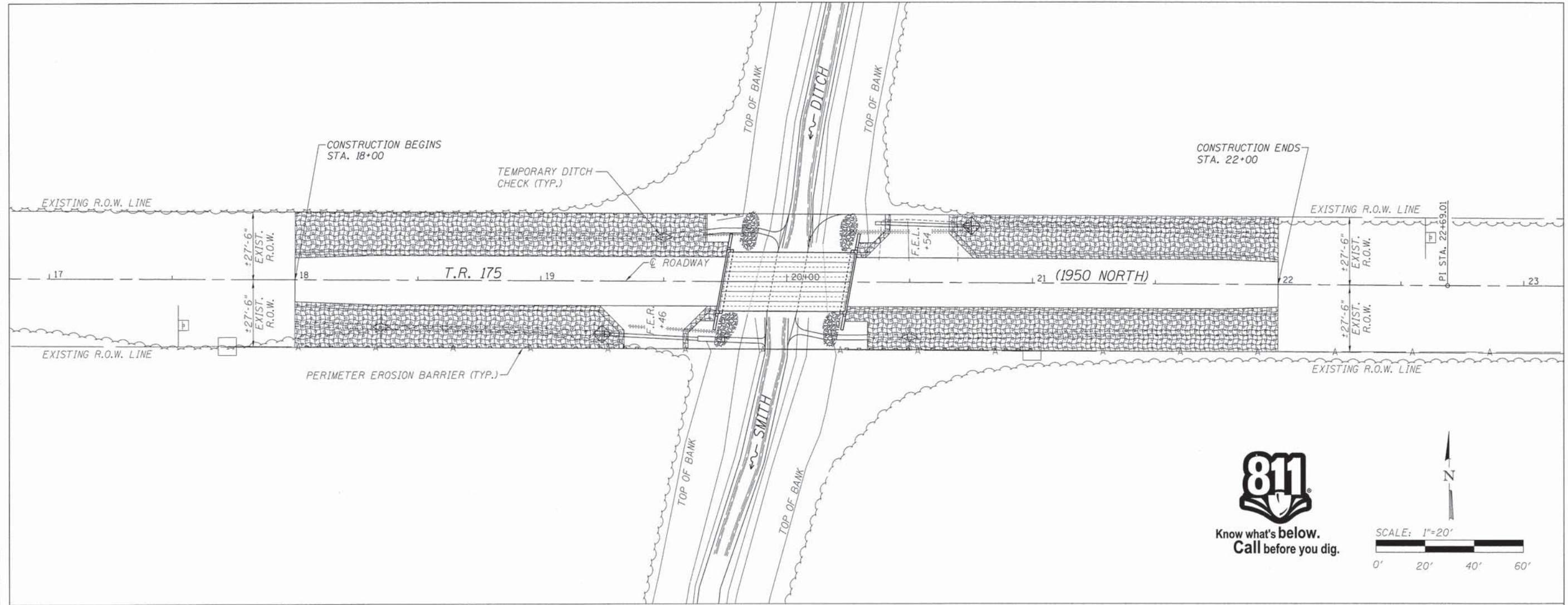
DATE: \_\_\_\_\_ BY: \_\_\_\_\_  
 SURVEYED: \_\_\_\_\_  
 ALIGNED: \_\_\_\_\_  
 CHECKED: \_\_\_\_\_  
 DRAWN: \_\_\_\_\_  
 NOTE BOOK NO.: \_\_\_\_\_  
 FILE NAME: \_\_\_\_\_

DATE: \_\_\_\_\_ BY: \_\_\_\_\_  
 SURVEYED: \_\_\_\_\_  
 GRADES CHECKED: \_\_\_\_\_  
 PLAN CHECKED: \_\_\_\_\_  
 NOTE BOOK NO.: \_\_\_\_\_  
 FILE NAME: \_\_\_\_\_

FILE = S:\PROJECTS\2015\1055013\BCH\DESIGN\STRUCTURE\Drawings\1055013\_Plan & Profile\_T.R. 175.dwg

DATE	
BY	
DESIGNED	
CHECKED	
DRAWN	
NOTED	
FILE NO.	

DATE	
BY	
DESIGNED	
CHECKED	
DRAWN	
NOTED	
FILE NO.	



**EROSION CONTROL NOTES**

THE SOIL EROSION AND SEDIMENT CONTROL PRACTICES WILL BE INSPECTED WEEKLY AND AFTER 1/2" OF RAIN OR MORE BY THE INDIVIDUAL ON SITE IN CHARGE OF SOIL EROSION AND SEDIMENT CONTROL DURING THE CONSTRUCTION OF THE PROJECT.

PERIMETER EROSION BARRIER SHALL COMPLY WITH SECTION 280 OF THE STANDARD SPECIFICATIONS AND SHALL BE PLACED AS SHOWN ON THIS EROSION CONTROL PLAN SHEET AND IN ACCORDANCE WITH STATIONS SHOWN ON THE SCHEDULE OF QUANTITIES SHEET OR AS DIRECTED BY THE ENGINEER.

SILT FENCE SHALL BE INSTALLED FOLLOWING THE COMPLETION AND STABILIZATION OF ALL AREAS ADJACENT TO THE ON-SITE DRAINAGES. THE SILT FENCE WILL REMAIN IN PLACE UNTIL THE CONTRIBUTING AREA IS STABILIZED.

FOR SEEDING, CLASS 3 (SPECIAL) SEE SPECIAL PROVISIONS.

EROSION CONTROL BLANKET SHALL BE PLACED IN DITCHES AND TO ALL DISTURBED AREAS AS SHOWN ON THIS EROSION CONTROL PLAN SHEET AND IN ACCORDANCE WITH SECTION 251 OF THE STANDARD SPECIFICATIONS FOR ROAD AND BRIDGE CONSTRUCTION.

THE USE OF GREEN DYE IN THE EROSION CONTROL BLANKET IS NOT ACCEPTABLE.

TEMPORARY DITCH CHECKS SHALL COMPLY WITH SECTION 280 OF THE STANDARD SPECIFICATIONS FOR ROAD AND BRIDGE CONSTRUCTION AND STANDARD 280001.

TEMPORARY DITCH CHECKS SHALL BE PLACED AT STATIONS CALLED OUT IN THE SCHEDULE OF QUANTITIES OR AS DIRECTED BY THE ENGINEER.

STOCKPILES OF SOIL AND OTHER BUILDING MATERIALS TO REMAIN IN PLACE MORE THAN 3 DAYS SHALL BE FURNISHED WITH EROSION AND SEDIMENT CONTROL MEASURES (I.E. PERIMETER SILT FENCE). STOCKPILES TO REMAIN IN PLACE FOR 14 DAYS OR MORE SHALL RECEIVE TEMPORARY SEEDING.

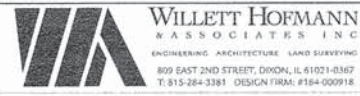
ALL ADJACENT STREETS MUST BE KEPT CLEAR OF DEBRIS. INSPECTED DAILY AND CLEANED WHEN NECESSARY.

**LEGEND**

	PERIMETER EROSION BARRIER
	SEEDING, CLASS 3 (SPECIAL)
	EROSION CONTROL BLANKET
	TEMPORARY DITCH CHECKS
	INLET AND PIPE PROTECTION

**BILL OF MATERIAL**

ITEM	UNIT	QUANTITY
EROSION CONTROL BLANKET	SO. YD.	1.351
TEMPORARY EROSION CONTROL SEEDING	POUND	28
TEMPORARY DITCH CHECKS	FOOT	30
PERIMETER EROSION BARRIER	FOOT	402
INLET AND PIPE PROTECTION	EACH	2
SEEDING, CLASS 3 (SPECIAL)	ACRE	0.28



DESIGNED - MAC	REVISED -
CHECKED - MCW	REVISED -
DRAWN - DAN	REVISED -
CHECKED - BKC	REVISED -

**BUREAU COUNTY**  
**T.R. 175 (1950 NORTH) OVER SMITH DITCH**  
**STATION 20+00**

**EROSION CONTROL PLAN**  
**STRUCTURE NO. 006-4219**  
 SCALE: 1" = 20'-0" SHEET NO. 1 OF 1 SHEETS STA. 17+00.00 TO STA. 23+00.00

TWP. 17S	SECTION 08-15120-00-BR	COUNTY BUREAU	TOTAL SHEETS 18	SHEET NO. 6
WHA* 1055013		CONTRACT NO. 87552		
[ILLINOIS] FED. AID PROJECT BR05-00110961				

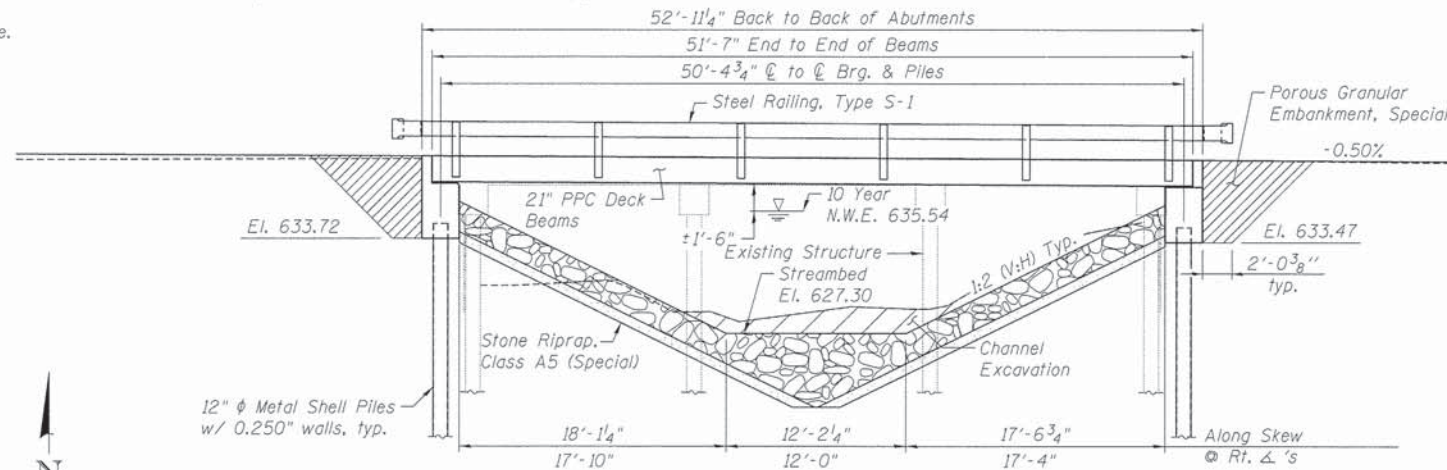
FILE = S:\PROJECTS\2017\1855013\BCH\DESIGN\STRUCT\T.MP\erocn.dgn

**EXISTING STRUCTURE:** S.N. 006-4212

Originally built in 1956 the existing structure is a three span (15'-6"; 16'-0"; 15'-6") precast reinforced concrete channel beam bridge on spill thru timber pile abutments. 48'-8" back to back of abutments and 25'-3" out to out of deck. Structure to be removed and replaced. Road closed to traffic during construction.

No salvage.

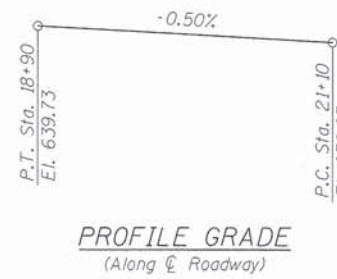
**BENCH MARK:** Chiseled "□" on the Northeast corner of bridge headwall, 12.3' Lt. of Sta. 20+23.97, El. 639.49



WEST ABUT. ELEVATION VIEW EAST ABUT.

**INDEX OF SHEETS**

- 1) General Plan and Elevation
- 2) Riprap and Pile Layout
- 3) 21" x 48" PPC Deck Beam
- 4) 21" x 48" PPC Deck Beam Details
- 5) West Abutment Details
- 6) East Abutment Details
- 7) Steel Railing, Type S1 Details
- 8) Metal Shell Pile Details
- 9) Boring Logs



**TOTAL BILL OF MATERIAL**

ITEM	UNIT	SUPER	SUB	TOTAL
Channel Excavation	Cu. Yd.	---	45	45
* Removal of Existing Structures	Each	---	---	1
* Concrete Structures	Cu. Yd.	---	24.2	24.2
Precast Prestressed Concrete Deck Beams (21" Depth)	Sq. Ft.	1,238	---	1,238
Reinforcement Bars	Pound	---	2,620	2,620
* Steel Railing, Type S1	Foot	106	---	106
Furnishing Metal Shell Piles 12" x 0.250"	Foot	---	258	258
Driving Piles	Foot	---	258	258
Test Pile Metal Shells	Each	---	2	2
Name Plates	Each	---	1	1
* Porous Granular Embankment, Special	Ton	---	98	98
* Stone Riprap, Class A5 (Special)	Ton	---	555	555

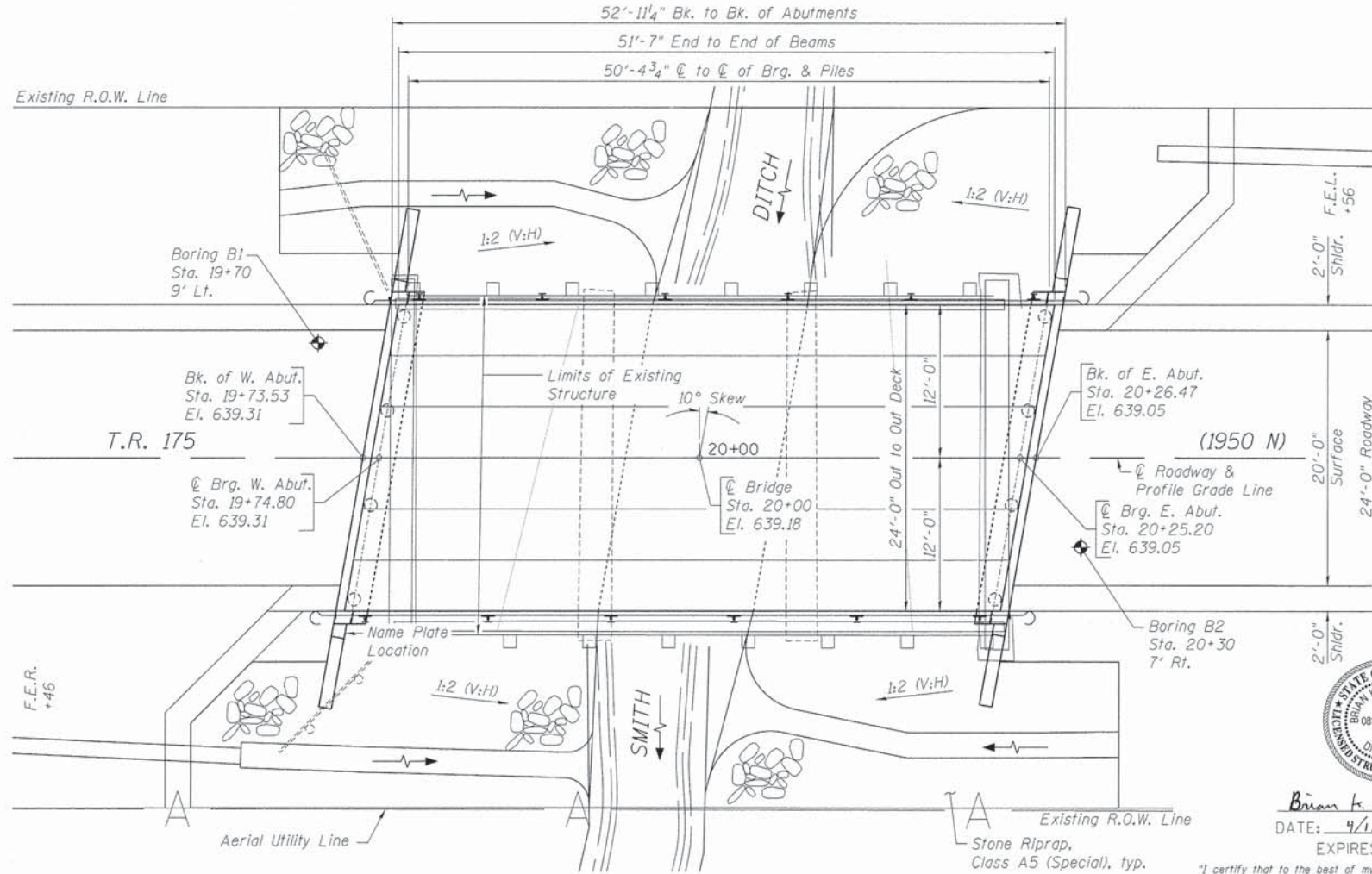
**GENERAL NOTES**

\*See Special Provisions.

Reinforcement bars designated (E) shall be epoxy coated.

Layout of the slope protection system may be varied to suit ground conditions in the field as directed by the Engineer.

Excavation behind existing abutment walls shall be performed to balance front and back soil pressure before removing the existing superstructure.



PLAN VIEW

**DESIGN SCOUR ELEVATION TABLE**

Design Scour Elevation (ft.)	W. Abut.	E. Abut.
	633.72	633.47

SMITH DITCH  
 BUILT 2014 BY  
 BUREAU COUNTY  
 SECTION 08-15120-00-BR  
 TWP. RTE. 175 STATION 20+00  
 STR. NO. 006-4219 LOADING HL-93

**NAME PLATE LETTERING**

See Std. 515001



Brian A. Conner  
 DATE: 4/1/2014  
 EXPIRES 11/30/14

"I certify that to the best of my knowledge, information and belief, this bridge design is structurally adequate for the design loading shown on the plans, the design is an economical one for the style of structure and complies with requirements of the current 'AASHTO Bridge Design Specifications.'"



**WATERWAY INFORMATION**

Drainage Area = 6.69 sq. mi. Low Grade Elev. 638.38 at Sta. 22+00

Flood Yr.	Freq.	Opening - Sq. Ft.		Nat. Head - Ft.		Headwater El.			
		Exist.	Prop.	H.W.E.	Prop.	Exist.	Prop.		
Design	10	540	229	234	635.54	0.12	0.01	635.66	635.55
Base	100	905	283	298	636.90	0.14	0.01	637.04	636.91
Max. Calc.	500	1,150	300	326	637.41	0.15	0.10	637.56	637.51

**DESIGN SPECIFICATIONS**

2012 AASHTO LRFD Bridge Design Specifications, 6th Edition

**DESIGN STRESSES**

**FIELD UNITS**

$f'_c$  = 3,500 psi  
 $f_y$  = 60,000 psi (Reinforcement)  
**PRECAST PRESTRESSED UNITS**  
 $f'_c$  = 6,000 psi  
 $f'_{ci}$  = 5,000 psi  
 $f_{pu}$  = 270,000 psi (1/2  $\phi$  Low Lax Strands)  
 $f_{pbt}$  = 201,960 psi (1/2  $\phi$  Low Lax Strands)

**LOADING HL-93**

Allow 50#/sq. ft. for future wearing surface.

**SEISMIC DATA**

Seismic Performance Zone (SPZ) = 1  
 Design Spectral Acceleration at 1.0 sec. ( $S_{0.1}$ ) = 0.093g  
 Design Spectral Acceleration at 0.2 sec. ( $S_{0.2}$ ) = 0.149g  
 Soil Site Class = D

**GENERAL PLAN AND ELEVATION**  
**T.R. 175 (1950 N) OVER SMITH DITCH**  
**SECTION 08-15120-00-BR**  
**BUREAU COUNTY**  
**STATION 20+00**  
**STRUCTURE NO. 006-4219**



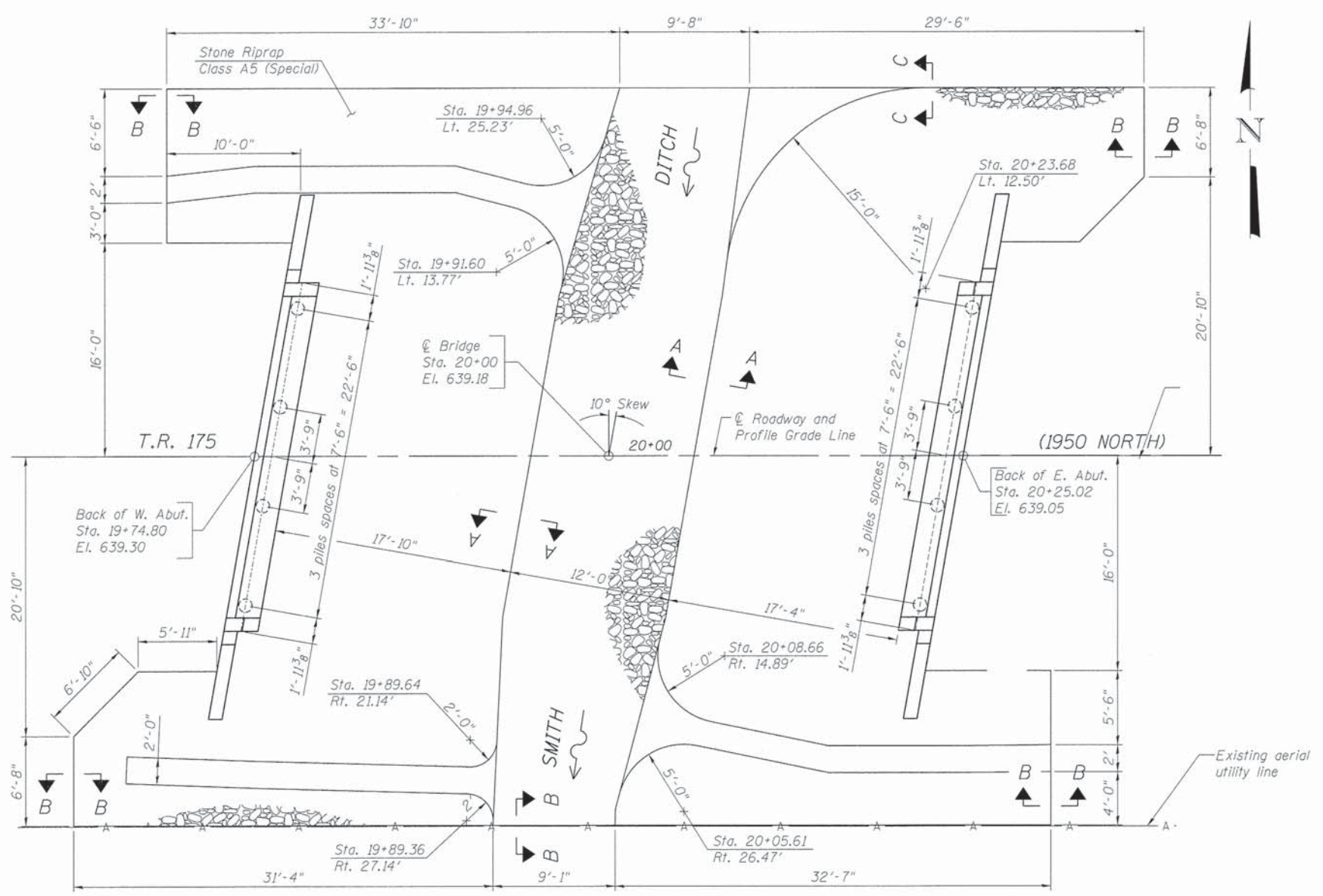
DESIGNED	REVISIONS
MCW	-
CHECKED	MAC
DRAWN	MAC
CHECKED	BKC

**BUREAU COUNTY**  
**T.R. 175 (1950 NORTH) OVER SMITH DITCH**  
**STATION 20+00**

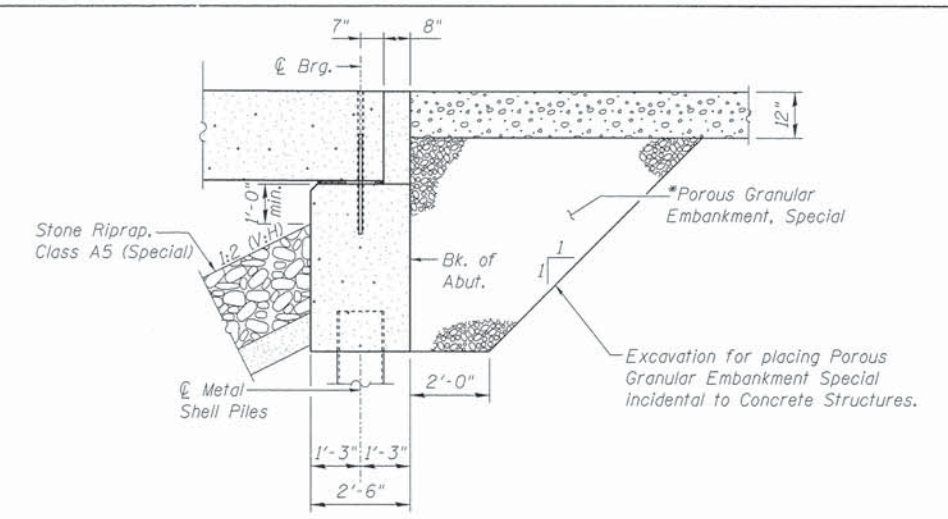
STRUCTURAL SHEET NO. 1 OF 9 SHEETS

TWP. RTE.	SECTION	COUNTY	TOTAL SHEETS	SHEET NO.
175	08-15120-00-BR	BUREAU	18	7
WHA# 1055013		CONTRACT NO.		87552
ILLINOIS FED. AID PROJECT BROS-00110961				

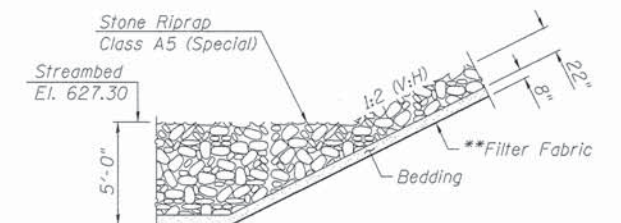
FILE: S:\PROJECTS\2013\1755013\_BCM\DESIGN\STRUCT\06-riprap\1755013\_Riprap.dwg



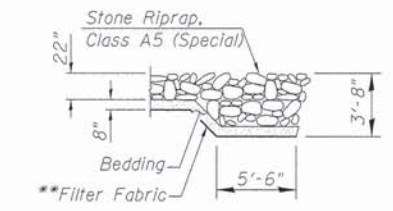
PLAN VIEW



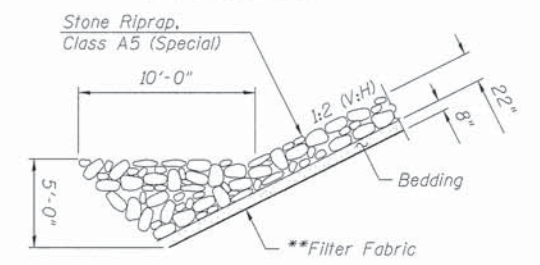
SECTION THRU ABUTMENT  
(Dimensions at Rt. L's.)



SECTION A-A



SECTION B-B



SECTION C-C

BILL OF MATERIAL

Item	Unit	Quantity
Stone Riprap, Class A5 (Special)	Ton	555

NOTES:

- \* Pay Limits of Porous Granular Embankment, Special shall extend to 2'-0" from the end of each wingwall.
- \*\* Cost to be included in Stone Riprap, Class A5 (Special).

**WILLET HOFMANN ASSOCIATES INC.**  
ENGINEERING ARCHITECTURE LAND SURVEYING  
809 EAST 2ND STREET, DODON, IL 61021-0367  
T: 815-284-3381 DESIGN FIRM: #184-000918

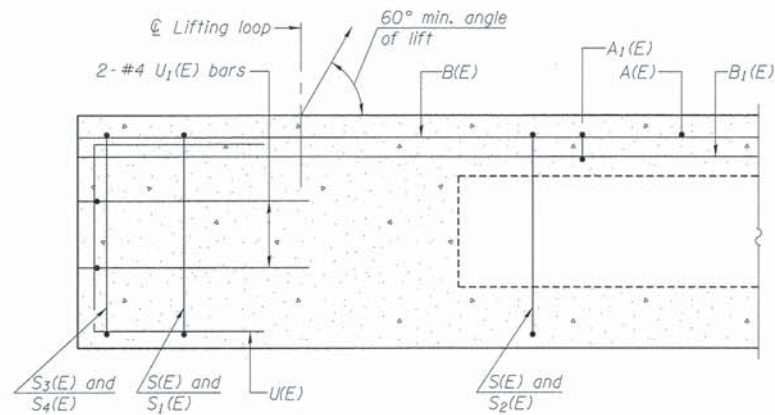
DESIGNED - MAC	REVISED -
CHECKED - MCW	REVISED -
DRAWN - DAN	REVISED -
CHECKED - BKC	REVISED -

**BUREAU COUNTY**  
**T.R. 175 (1950 NORTH) OVER SMITH DITCH**  
**STATION 20+00**

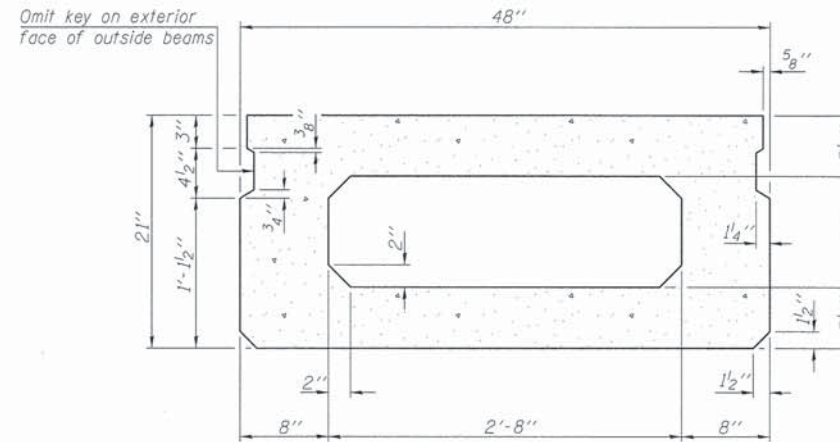
**RIPRAP AND PILE LAYOUT**  
**STRUCTURE NO. 006-4219**  
STRUCTURAL SHEET NO. 2 OF 9 SHEETS

TWP. RTE.	SECTION	COUNTY	TOTAL SHEETS	SHEET NO.
175	08-15120-00-BR	BUREAU	18	8
WHA# 1055D13		CONTRACT NO. 87552		
ILLINOIS FED. AID PROJECT BROS-00110961				

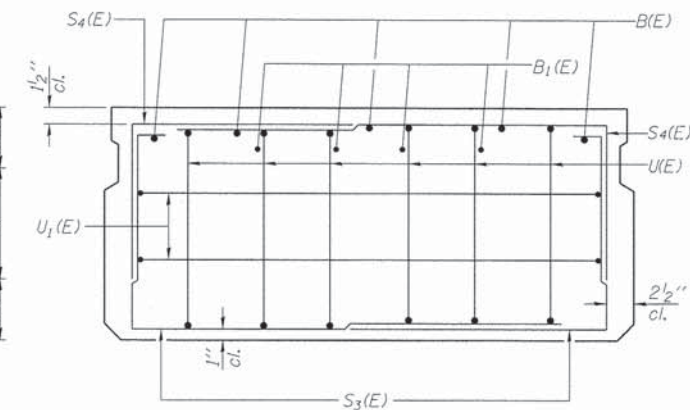




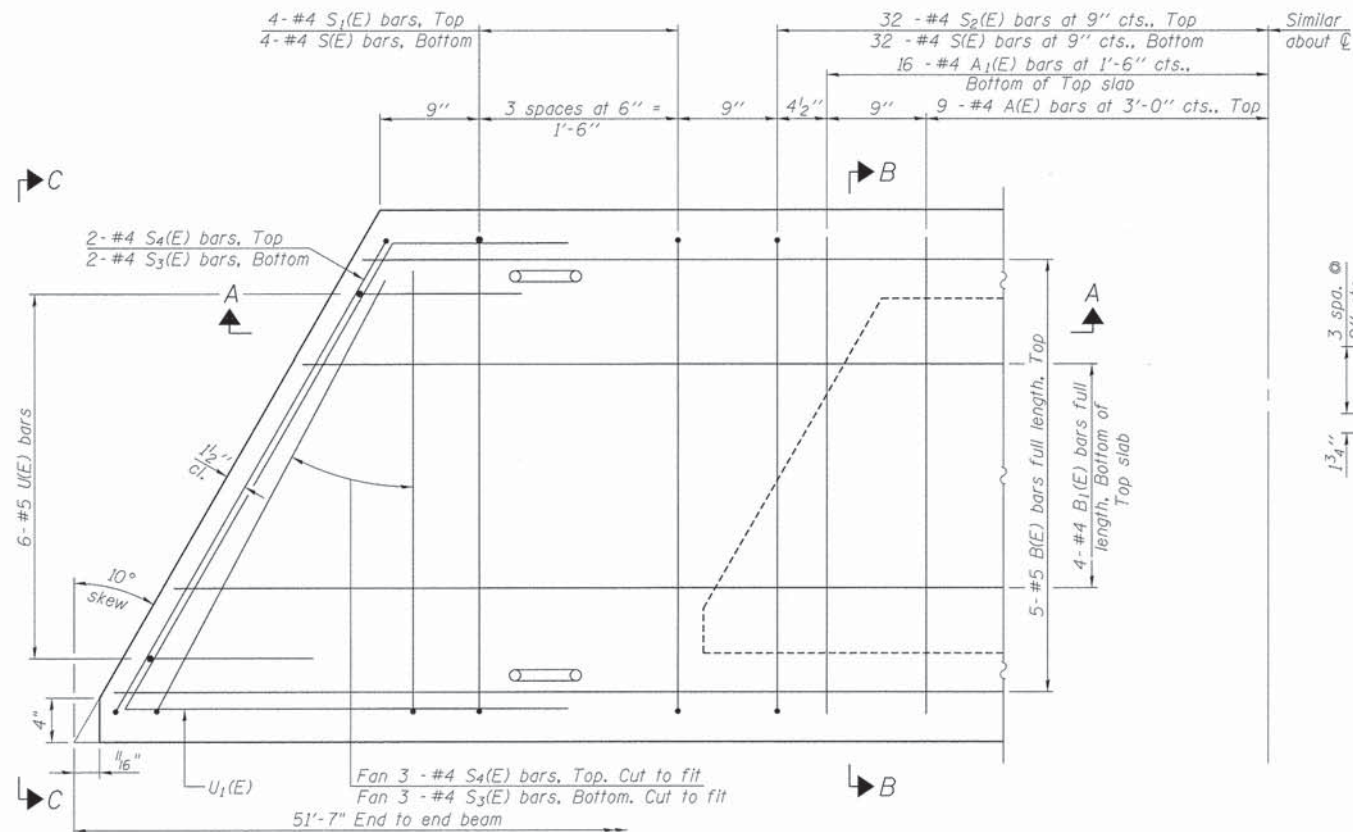
SECTION A-A



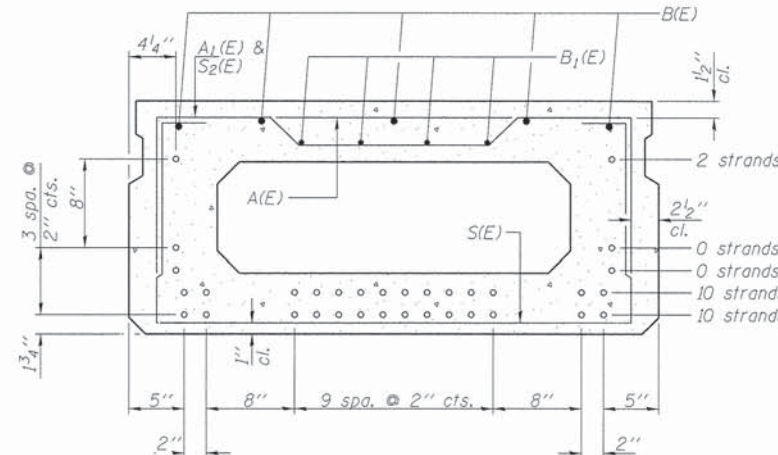
SECTION B-B  
(Showing dimensions)



VIEW C-C



PLAN VIEW



SECTION B-B  
(Showing reinforcement and permissible strand locations)  
Note: Place the number of strands specified in each row symmetrically about the centerline of beam in the permissible strand locations shown.

BAR LIST  
ONE BEAM ONLY  
(For information only)

Bar	No.	Size	Length	Shape
A(E)	18	#4	3'-7"	—
A1(E)	32	#4	3'-10"	—
B(E)	5	#5	51'-3"	—
B1(E)	4	#4	51'-3"	—
S(E)	72	#4	7'-5"	□
S1(E)	8	#4	5'-11"	□
S2(E)	64	#4	6'-2"	□
S3(E)	5	#4	4'-9"	□
S4(E)	5	#4	4'-0"	□
U(E)	12	#5	4'-0"	□
U1(E)	4	#4	6'-7"	□

NOTES  
See Structural Sheet 4 of 9 for additional details and Bill of Material.

MINIMUM BAR LAP  
#4 bar = 2'-0"  
#5 bar = 2'-6"

Note: Spacing of S(E) and S2(E) bars may be adjusted up to 4" in the immediate area of the transverse tie diaphragms to miss the block outs for the transverse ties.

FILE = S:\PROJECTS\2013\1055013\_BCH\INVESTIGATIONS\STRUCT\Drawings\1055013.21 In.Desk Beam.dgn



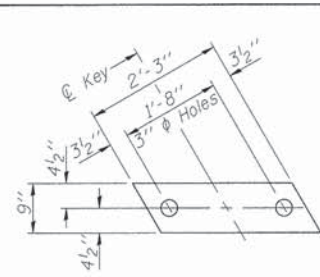
DESIGNED - MCW	REVISED -
CHECKED - MAC	REVISED -
DRAWN - MCW	REVISED -
CHECKED - BKC	REVISED -

BUREAU COUNTY  
T.R. 175 (1950 NORTH) OVER SMITH DITCH  
STATION 20 + 00

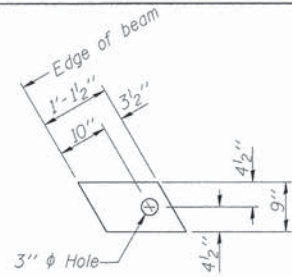
21" x 48" PPC DECK BEAM  
STRUCTURE NO. 006-4219

STRUCTURAL SHEET NO. 3 OF 9 SHEETS

TWP. R.T.E.	SECTION	COUNTY	TOTAL SHEETS	SHEET NO.
175	08-15120-00-BR	BUREAU	18	9
	WHA# 1055013	CONTRACT NO.	87552	
[ILLINOIS] FED. AID PROJECT BR05-0011096				

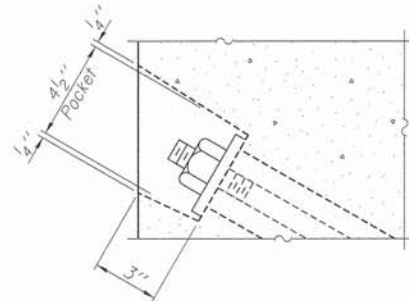


FABRIC BEARING PAD  
(Interior)

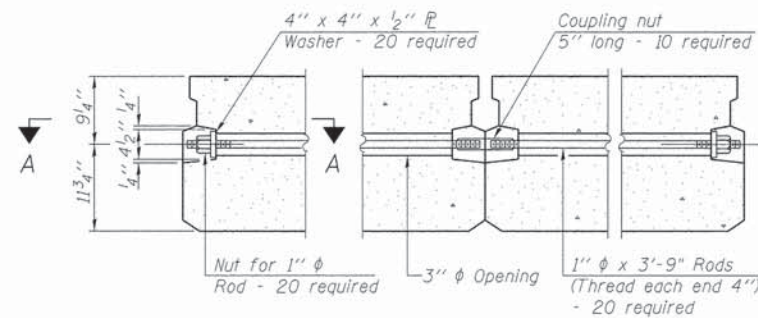


FABRIC BEARING PAD  
(Exterior)

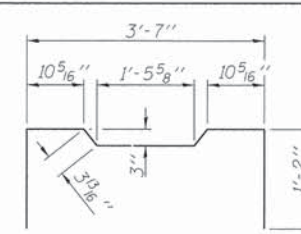
FIXED



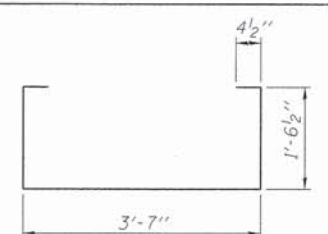
SECTION A-A



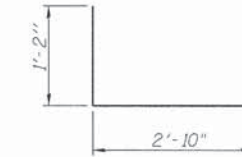
TYPICAL TRANSVERSE TIE ASSEMBLY



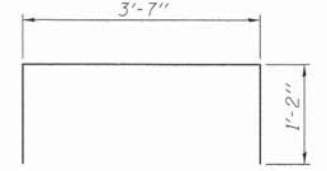
BAR S<sub>2</sub>(E)



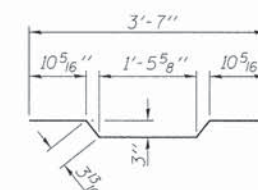
BAR S(E)



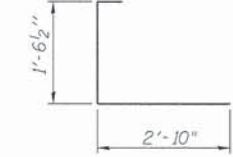
BAR S<sub>4</sub>(E)



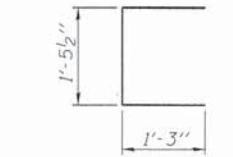
BAR S<sub>1</sub>(E)



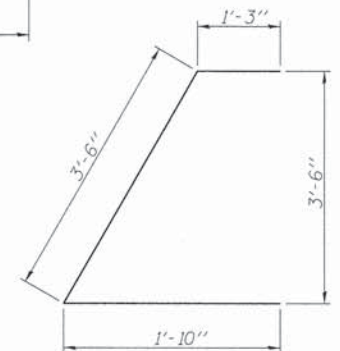
BAR A<sub>1</sub>(E)



BAR S<sub>3</sub>(E)

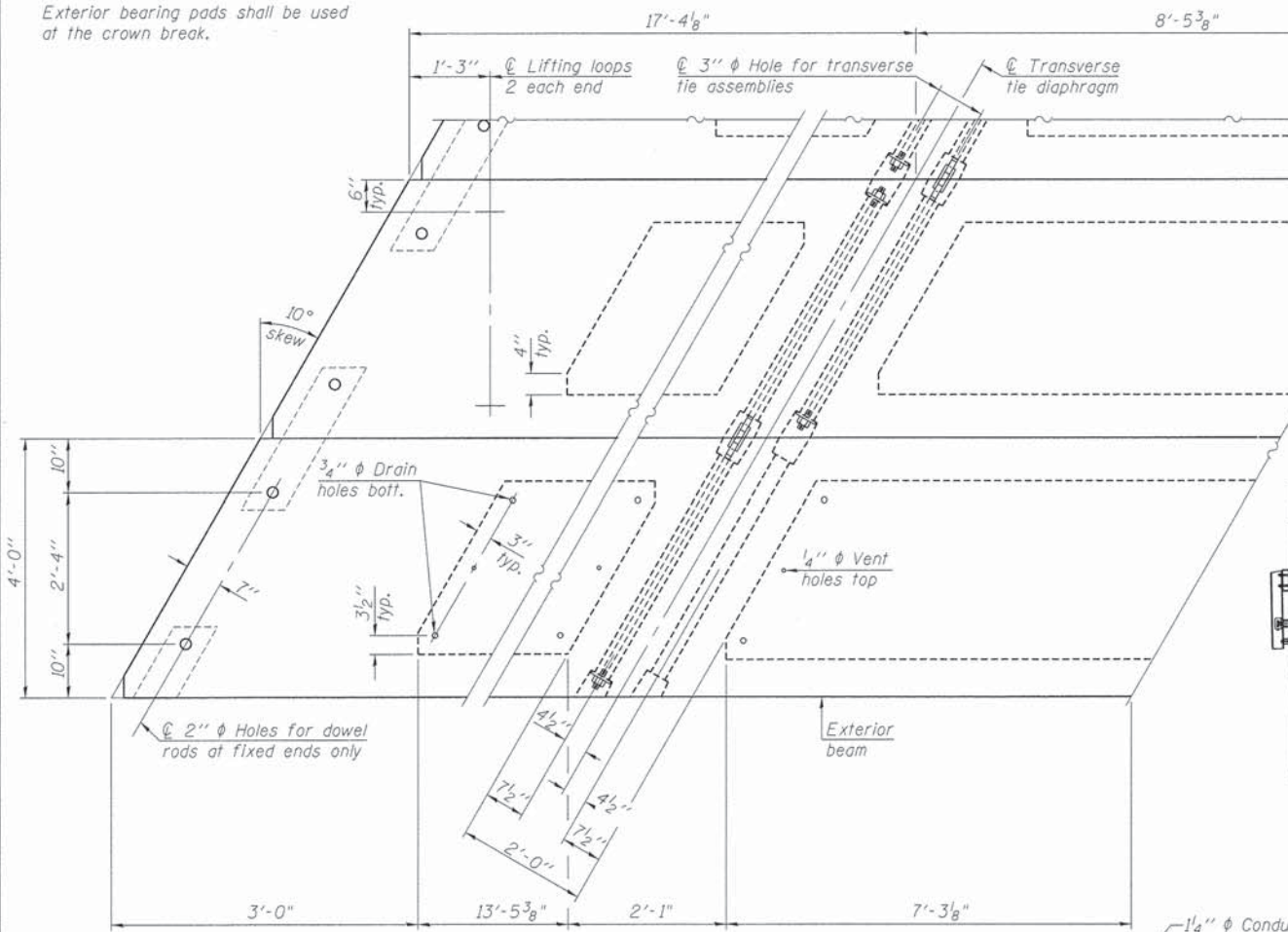


BAR U(E)



BAR U<sub>1</sub>(E)

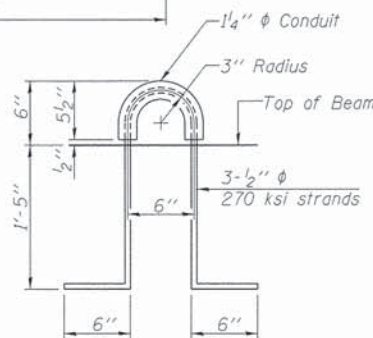
Notes:  
All bearing pads shall be 1" thick.  
Exterior bearing pads shall be used of the crown break.



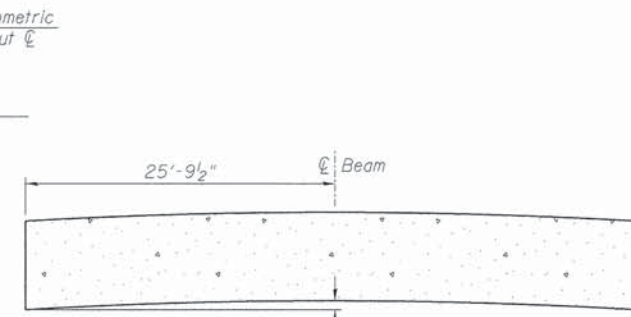
PLAN VIEW

Note: Connect beams in pairs with the transverse tie configuration shown.

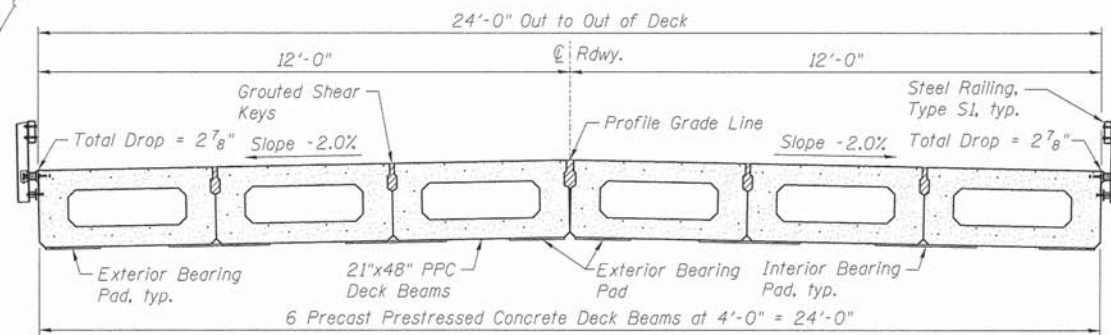
Unused transverse tie hole on exterior beam shall be omitted.



LIFTING LOOP DETAIL



CAMBER DIAGRAM



CROSS SECTION

NOTES

Prestressing steel shall be uncoated high strength, low relaxation 7-wire strand, Grade 270. The nominal diameter shall be 1/2" and the nominal cross-sectional area shall be 0.153 sq. in.

The 1" phi rods in the transverse tie assembly shall be tightened to a snug fit and the threads set. Pockets on exterior faces of bridge shall be filled with grout after transverse tie assembly is in place.

Reinforcement bars shall conform to ASTM A 706, Grade 60. (See Special Provisions).

Two 1/8" fabric adjusting shims of the dimensions of the exterior bearing pad shall be provided for each bearing pad location.

A minimum 2 1/2" phi lifting pin shall be used to engage the lifting loops during handling.

Corrosion Inhibitor, per Article 1020.05(b)(12) and 1021.06 of the Standard Specifications, shall be used in the concrete for precast prestressed concrete deck beams.

Compressive strength of prestressed concrete, f'c, shall be 6000 psi.

Compressive strength of prestressed concrete at release, f'ci, shall be 5000 psi.

BILL OF MATERIAL

Item	Unit	Quantity
Precast Prestressed Concrete Deck Beams (21" Depth)	Sq. Ft.	1,238



DESIGNED - MCW	REVISED -
CHECKED - MAC	REVISED -
DRAWN - MCW	REVISED -
CHECKED - BKC	REVISED -

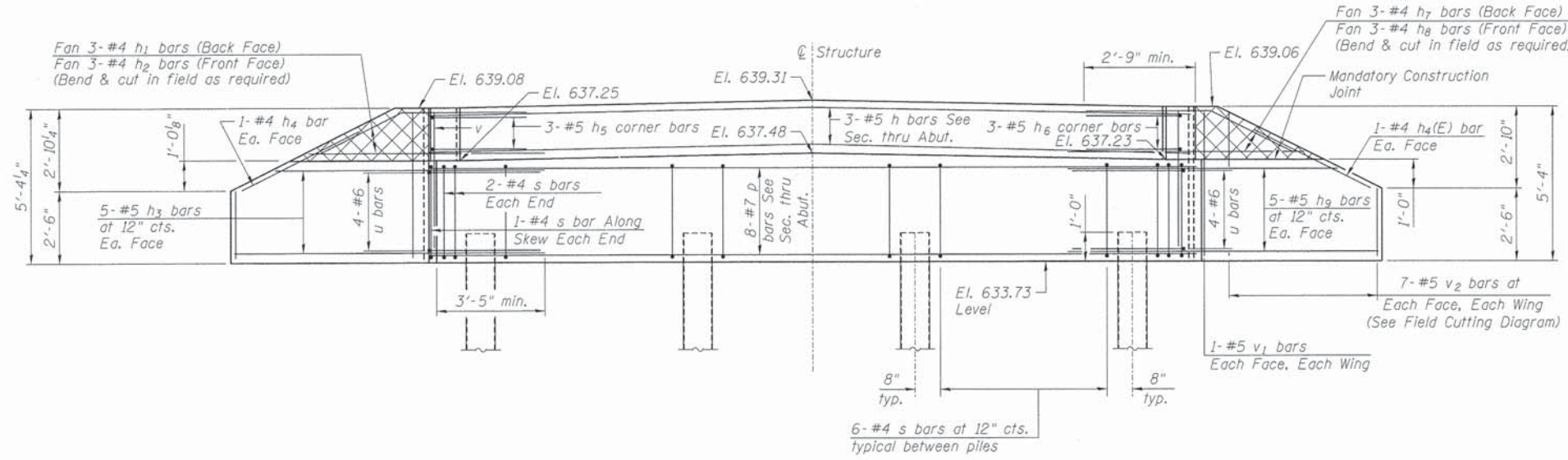
BUREAU COUNTY  
T.R. 175 (1950 NORTH) OVER SMITH DITCH  
STATION 20+00

21" X 48" PPC DECK BEAM DETAILS  
STRUCTURE NO. 006-4219

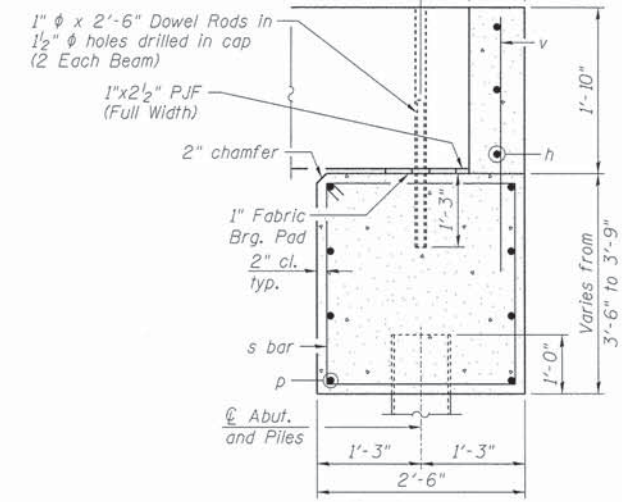
STRUCTURAL SHEET NO. 4 OF 9 SHEETS

TWP. RTE. 175	SECTION 08-15120-00-BR	COUNTY BUREAU	TOTAL SHEETS 18	SHEET NO. 10
WHA* 1055D13		CONTRACT NO. 87552		
ILLINOIS FED. AID PROJECT BROS-00110961				

FILE = S:\PROJECTS\2013\1895013\_BCM\DESIGN\STRUCT\Drawings\1895013\_21 m Deck Beam Details.dgn



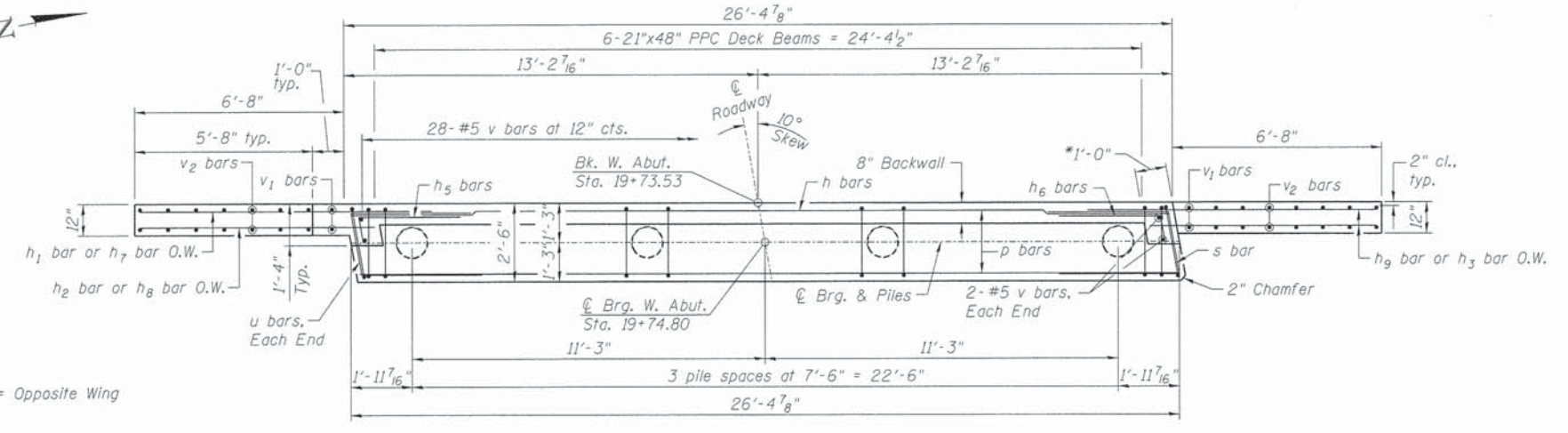
**ELEVATION**  
(Looking West)



**SEC. THRU ABUT.**  
(Dimensions are at Rt. L's)

**BILL OF MATERIAL**

Bar	No.	Size	Length	Shape
h	3	#5	26'-1"	—
h1	3	#4	7'-3"	—
h2	3	#4	4'-11"	—
h3	10	#5	10'-1"	—
h4	4	#4	4'-6"	—
h5	3	#5	2'-10"	∟
h6	3	#5	2'-10"	∟
h7	3	#4	7'-1"	—
h8	3	#4	4'-8"	—
h9	10	#5	9'-11"	—
p	8	#7	26'-1"	—
s	24	#4	11'-5"	□
u	8	#6	7'-1"	∟
v	32	#5	3'-8"	—
v1	4	#5	5'-0"	—
v2	14	#5	7'-1"	—
Concrete Structures	Cu. Yd.	12.1		
Reinforcement Bars	Pound	1,310		
Furnishing Metal Shell Piles 12" x 0.250"	Foot	129		
Driving Piles	Foot	129		
Test Pile Metal Shells	Each	1		
** Porous Granular Embankment, Special	Ton	49		



**PLAN**

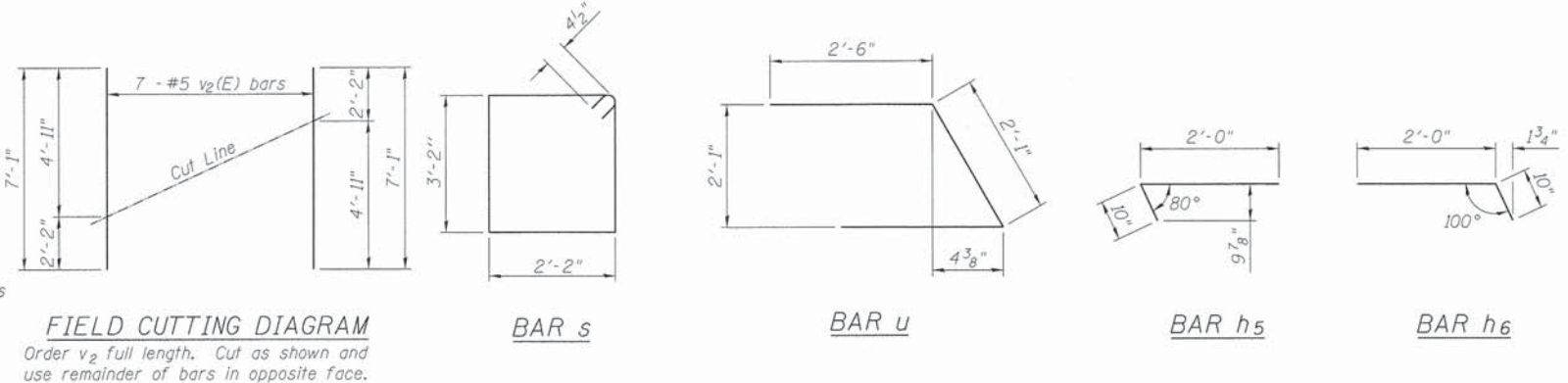
**ABOVE CONSTRUCTION JOINT**

**BELOW CONSTRUCTION JOINT**

MIN. LAP SIZE	LAP
#4	2'-7"
#5	3'-3"
#6	3'-10"
#7	5'-2"

**PILE DATA**

Type: Metal Shell 12"  $\phi$  x 0.250" walls  
 Nominal Required Bearing: 269 kips  
 Factored Resistance Available: 148 kips  
 Est. Length: 43'  
 No. Production Piles: 3  
 No. Test Piles: 1



**NOTES:**

- Hatched portion of wingwalls to be poured with the backwall after the deck beams have been installed and grout has cured for a minimum of 24 hours.
- All exposed edges shall have standard  $3/4$ " chamfers, except as noted.
- Space reinforcement in cap to miss dowel rods.
- After beams have been erected, holes shall be drilled into substructure and anchor dowels placed. Dowel holes shall be filled with non-shrink grout to top of beam and allowed to cure a min. of 24 hours prior to grouting the shear keys.
- For pile details, see Structural Sheet 8 of 9.
- \* May vary due to overrun of beams.
- \*\* For drainage details, see Structural Sheet 2 of 9.

FILE = S:\PROJECTS\2013\1055013.BCH\STRUCT\TDR\avg\1055013.WestAbutmentDetails.dgn

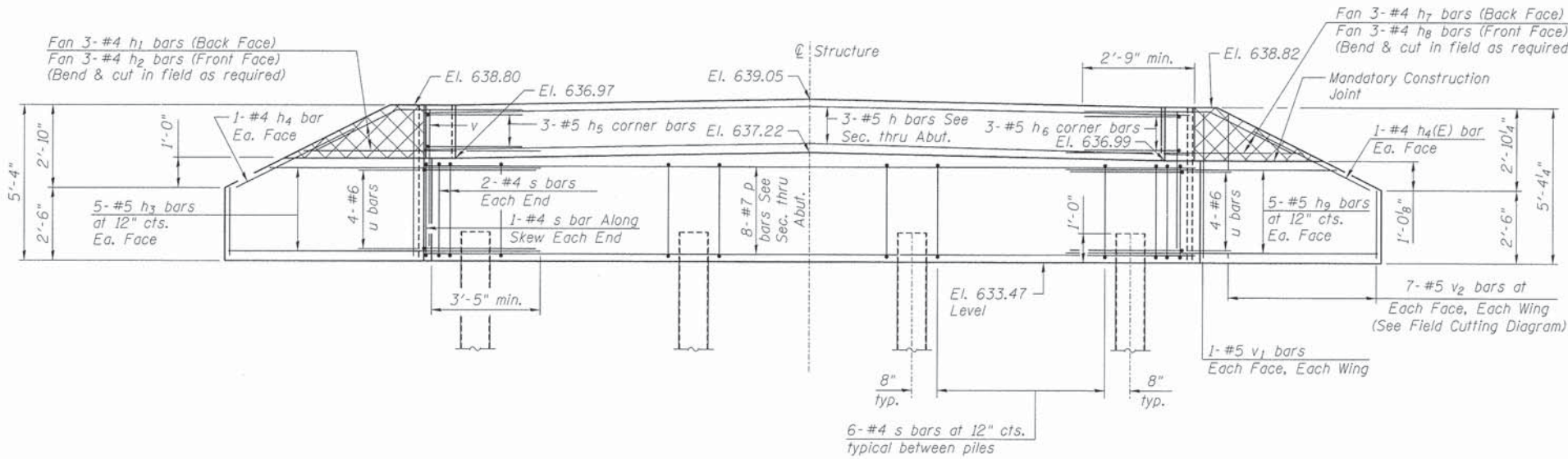


DESIGNED - MCW	REVISED -
CHECKED - MAC	REVISED -
DRAWN - MCW	REVISED -
CHECKED - BKC	REVISED -

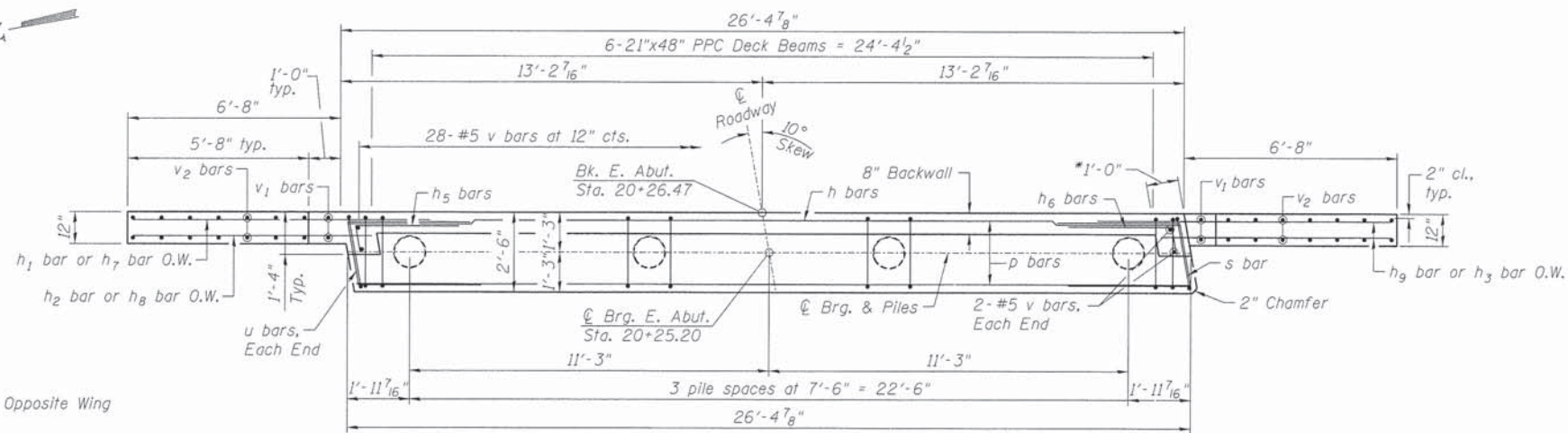
**BUREAU COUNTY**  
**T.R. 175 (1950 NORTH) OVER SMITH DITCH**  
**STATION 20+00**

**WEST ABUTMENT DETAILS**  
**STRUCTURE NO. 006-4219**  
 STRUCTURAL SHEET NO. 5 OF 9 SHEETS

TWP. RTE.	SECTION	COUNTY	TOTAL SHEETS	SHEET NO.
175	08-15120-00-BR	BUREAU	18	11
WHA# 1055013		CONTRACT NO. 87552		
[ILLINOIS] FED. AID PROJECT BR05-0011(96)				



**ELEVATION**  
(Looking East)



**ABOVE CONSTRUCTION JOINT**

**BELOW CONSTRUCTION JOINT**

**PLAN**

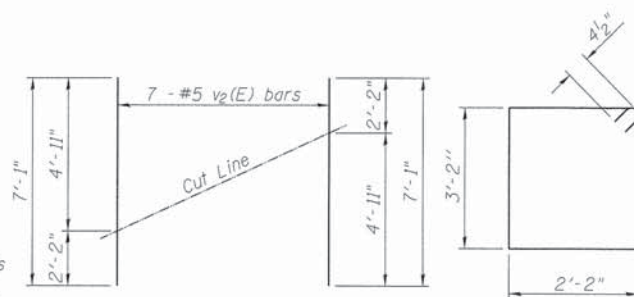
MIN. LAP SIZE	LAP
#4	2'-7"
#5	3'-3"
#6	3'-10"
#7	5'-2"

**PILE DATA**

Type: Metal Shell 12"  $\phi$  x 0.250" walls  
 Nominal Required Bearing: 269 kips  
 Factored Resistance Available: 148 kips  
 Est. Length: 43'  
 No. Production Piles: 3  
 No. Test Piles: 1

**FIELD CUTTING DIAGRAM**

Order  $v_2$  full length. Cut as shown and use remainder of bars in opposite face.

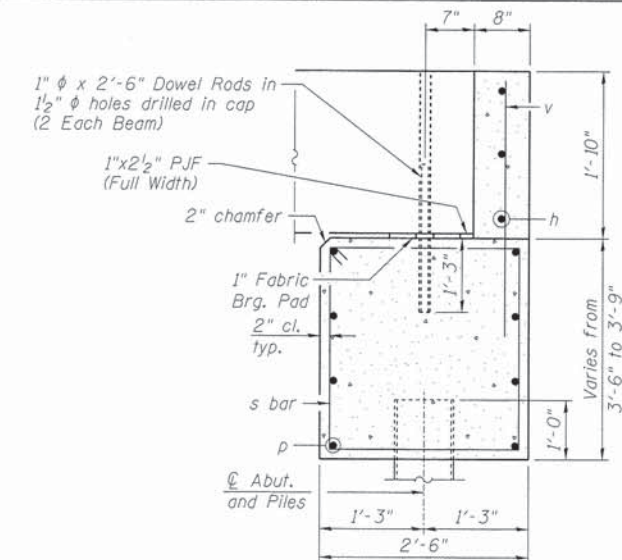


**BAR s**

**BAR u**

**BAR h5**

**BAR h6**



**SEC. THRU ABUT.**  
(Dimensions are at Rt. L's)

**BILL OF MATERIAL**

Bar	No.	Size	Length	Shape
h	3	#5	26'-1"	—
h1	3	#4	7'-3"	—
h2	3	#4	4'-11"	—
h3	10	#5	10'-1"	—
h4	4	#4	4'-6"	—
h5	3	#5	2'-10"	—
h6	3	#5	2'-10"	—
h7	3	#4	7'-1"	—
h8	3	#4	4'-8"	—
h9	10	#5	9'-11"	—
p	8	#7	26'-1"	—
s	24	#4	11'-5"	□
u	8	#6	7'-1"	—
v	32	#5	3'-8"	—
v1	4	#5	5'-0"	—
v2	14	#5	7'-1"	—
Concrete Structures		Cu. Yd.	12.1	
Reinforcement Bars		Pound	1,310	
Furnishing Metal Shell Piles 12" x 0.250"		Foot	129	
Driving Piles		Foot	129	
Test Pile Metal Shells		Each	1	
** Porous Granular Embankment, Special		Ton	49	

**NOTES:**

Hatched portion of wingwalls to be poured with the backwall after the deck beams have been installed and grout has cured for a minimum of 24 hours.  
 All exposed edges shall have standard  $\frac{3}{4}$ " chamfers, except as noted.  
 Space reinforcement in cap to miss dowel rods.

After beams have been erected, holes shall be drilled into substructure and anchor dowels placed. Dowel holes shall be filled with non-shrink grout to top of beam and allowed to cure a min. of 24 hours prior to grouting the shear keys.

For pile details, see Structural Sheet 8 of 9.

\* May vary due to overrun of beams.

\*\* For drainage details, see Structural Sheet 2 of 9.



DESIGNED - MCW  
 CHECKED - MAC  
 DRAWN - MCW  
 CHECKED - BKC

REVISED -  
 REVISED -  
 REVISED -  
 REVISED -

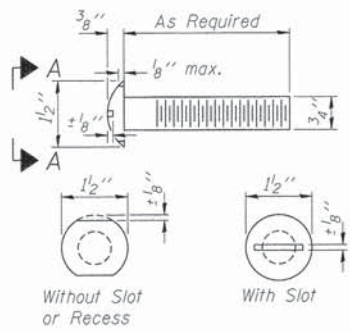
**BUREAU COUNTY**  
**T.R. 175 (1950 NORTH) OVER SMITH DITCH**  
**STATION 20+00**

**EAST ABUTMENT DETAILS**  
**STRUCTURE NO. 006-4219**

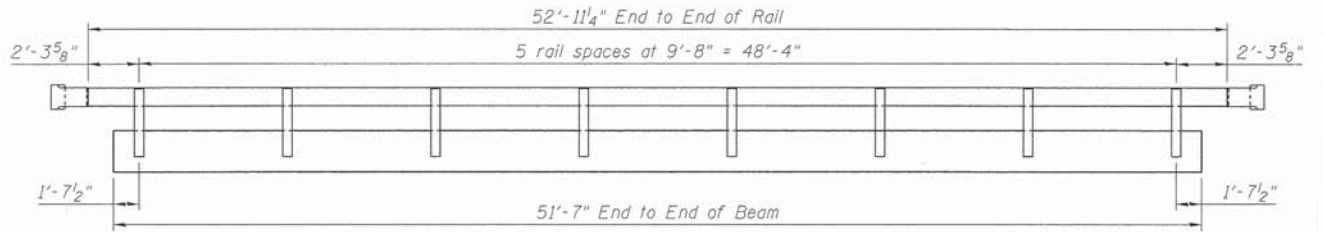
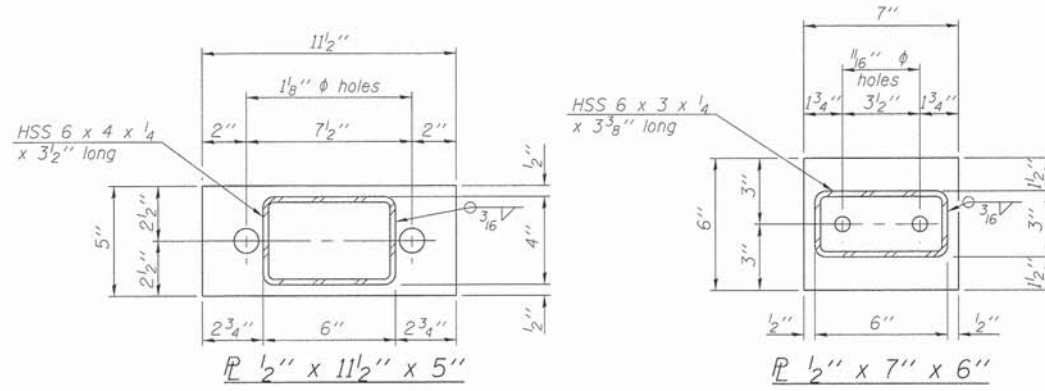
STRUCTURAL SHEET NO. 6 OF 9 SHEETS

TWP. RTE.	SECTION	COUNTY	TOTAL SHEETS	SHEET NO.
175	08-15120-00-BR	BUREAU	18	12
WHA# 1055013			CONTRACT NO. 87552	
ILLINOIS FED. AID PROJECT BRGS-00110961				

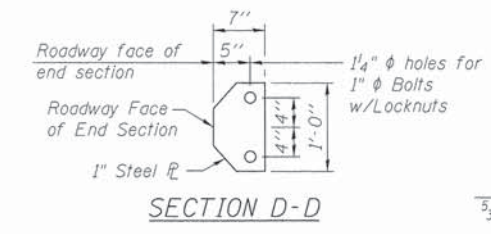
FILE # SA PROJECTS\2013\1055013\_BCH\DESIGN\STRUCT\10-REV\1055013\_EastAbutment06.dwg



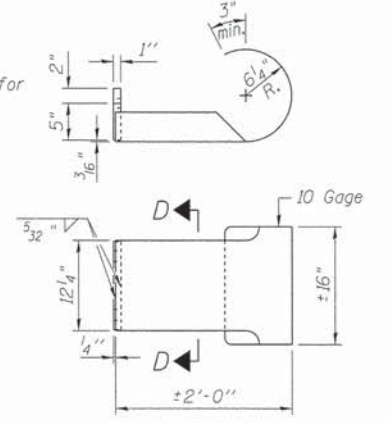
VIEW A-A  
ROUND HEAD BOLT



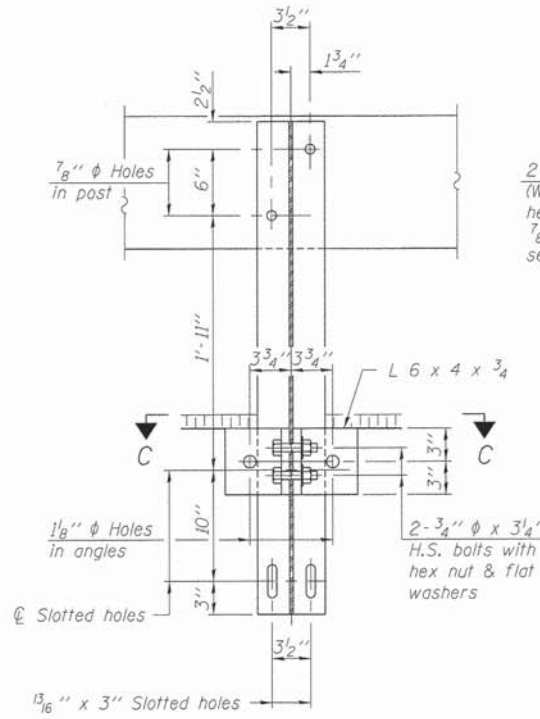
ELEVATION VIEW



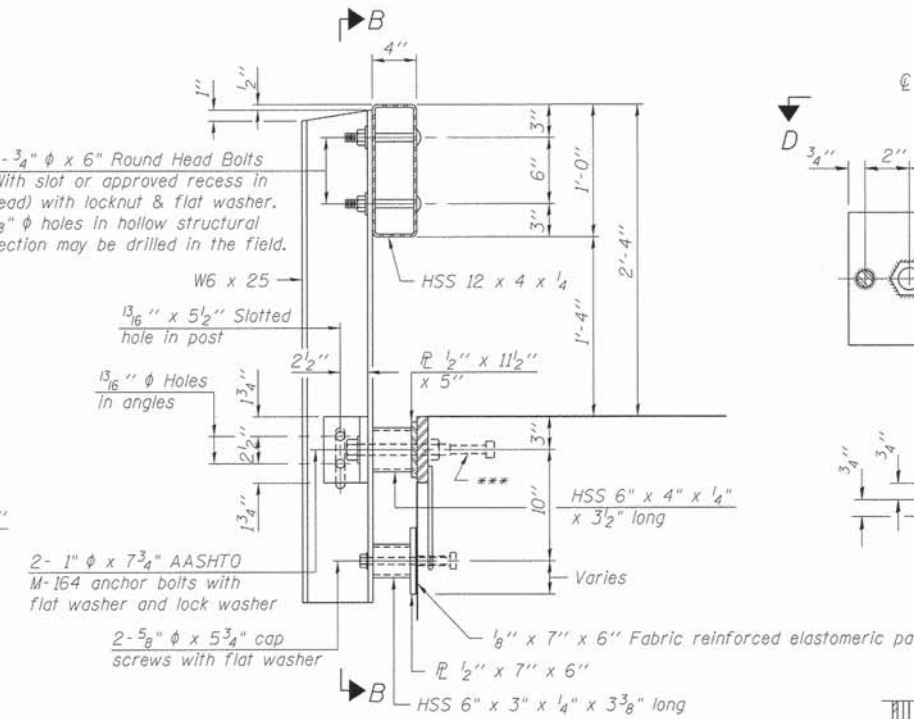
SECTION D-D



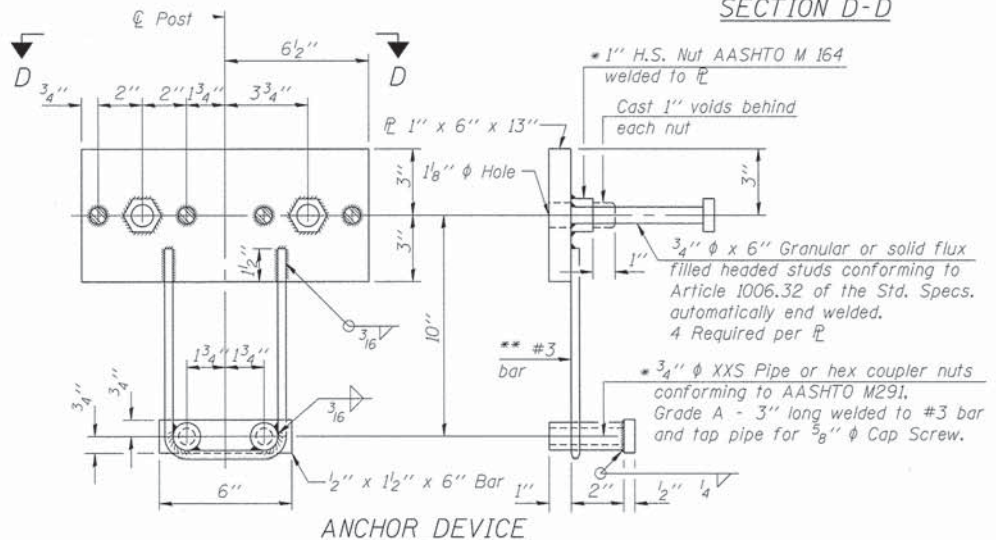
CURLED END SECTION DETAILS  
\*\*\*\*(4 required)



SECTION B-B

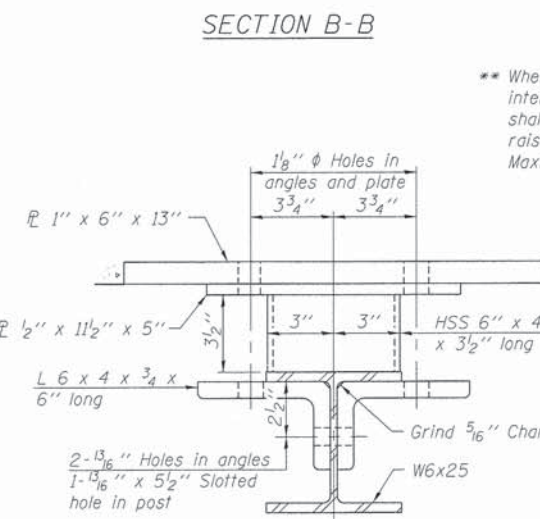


SECTION AT RAILING POST



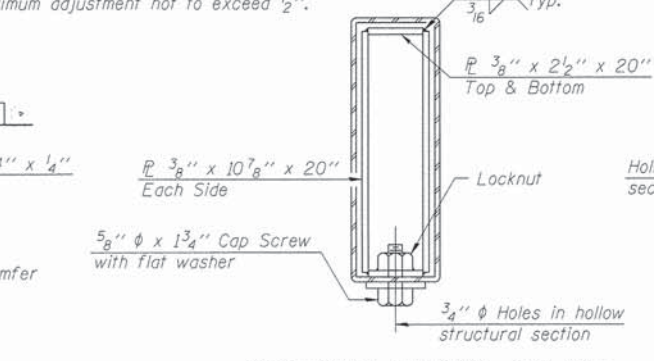
ANCHOR DEVICE

\* Threaded areas shall be plugged or blocked off during casting of beam.

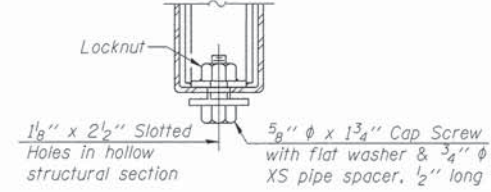


SECTION C-C

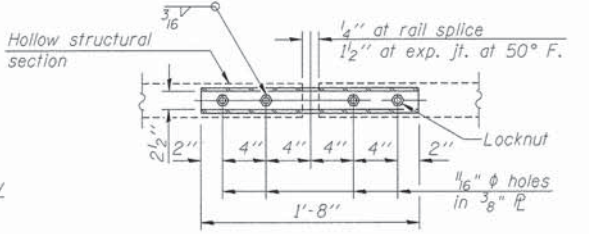
\*\* Whenever the lower insert assemblies interfere with strand locations, the #3 bars shall be cut and adjusted in order to allow raising or lowering of the lower inserts. Maximum adjustment not to exceed 1/2 inch.



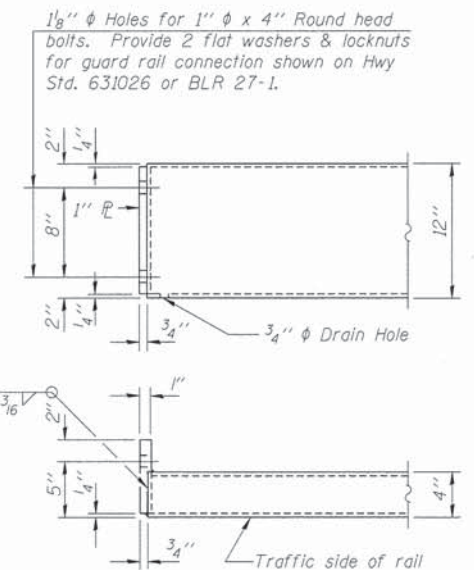
SECTIONS AT RAIL SPLICE



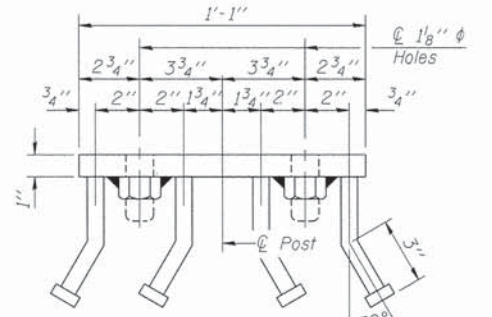
RAIL SPLICE CONNECTION  
AT EXPANSION JT.



PLAN-BOTT. SPLICE PLATE  
TYPICAL



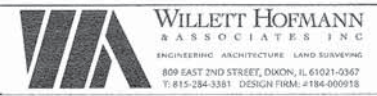
END OF RAIL DETAILS



VIEW D-D

BILL OF MATERIAL

Item	Unit	Quantity
Steel Railing, Type S1	Foot	106



DESIGNED - MCW	REVISED -
CHECKED - MAC	REVISED -
DRAWN - DAN	REVISED -
CHECKED - BKC	REVISED -

BUREAU COUNTY  
T.R. 175 (1950 NORTH) OVER SMITH DITCH  
STATION 20+00

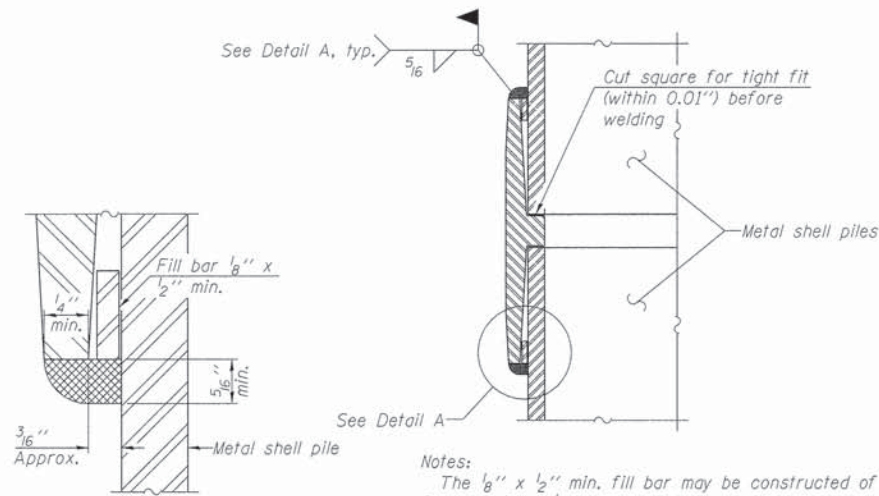
STEEL RAILING, TYPE S1 DETAILS  
STRUCTURE NO. 006-4219  
STRUCTURAL SHEET NO. 7 OF 9 SHEETS

TWP. RTE. 175	SECTION 08-15120-00-BR	COUNTY BUREAU	TOTAL SHEETS 18	SHEET NO. 13
WHA# 1055D13		CONTRACT NO. 87552		
ILLINOIS FED. AID PROJECT BROS-00110961				



METAL SHELL PILE TABLE

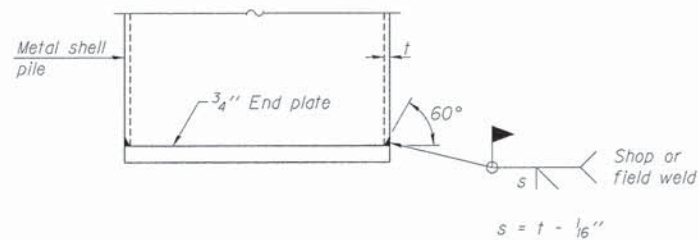
Designation and outside diameter	Wall thickness t	Weight per foot (Lbs./ft.)	Inside volume (yd. <sup>3</sup> /ft.)
PP12	0.179"	22.60	0.0274
PP12	0.250"	31.37	0.0267
PP14	0.250"	36.71	0.0368
PP14	0.312"	45.61	0.0361



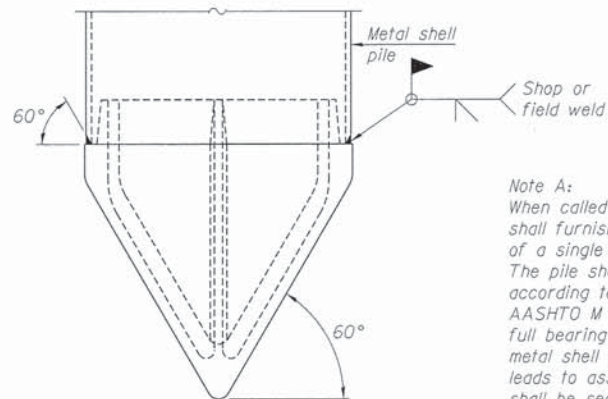
DETAIL A

WELDED COMMERCIAL SPLICE

Notes:  
 The 1/8" x 1/2" min. fill bar may be constructed of 2 bars with a 1/8" max. gap between them.  
 Pile segments shall be driven to solid contact with splicer before welding.



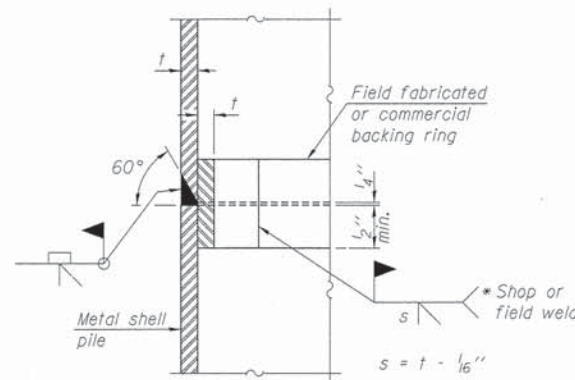
END PLATE ATTACHMENT



METAL SHELL PILE SHOE ATTACHMENT

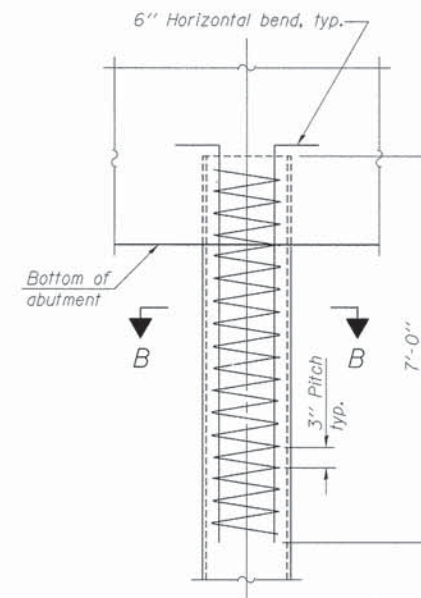
(See Note A)

Note A:  
 When called for on the plans, the Contractor shall furnish metal shell pile shoes consisting of a single piece conical pile point as shown. The pile shoes shall be cast in one piece steel according to either ASTM A 148 Grade 90-60 or AASHTO M 103 Grade 65-35 and shall provide full bearing over the full circumference of the metal shell pile. The pile shoe shall have tapered leads to assure proper alignment and fitting and shall be secured to the pile with a circumferential weld.



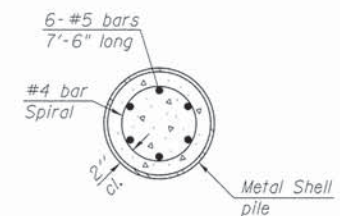
COMPLETE PENETRATION WELD SPLICE

\* Field fabricated backing ring may be made from pile shell by removing segment to allow reducing circumference and vertically rejoin with partial joint penetration weld.



ELEVATION

METAL SHELL REINFORCEMENT AT ABUTMENTS



SECTION B-B

Note:  
 The metal shell piles shall be according to ASTM A 252 Grade 3.

FILE : S:\PROJECTS\2013\1855013.BCH\DESIGN\STRUCT\AD-arrng\1855013.Metal Shell Pl.dwg



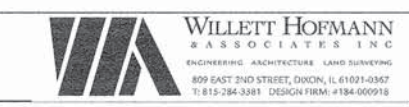
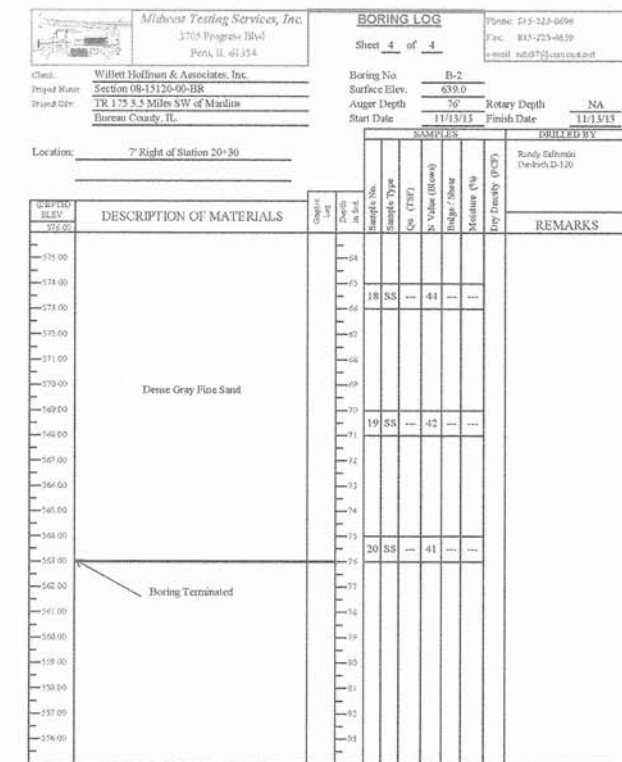
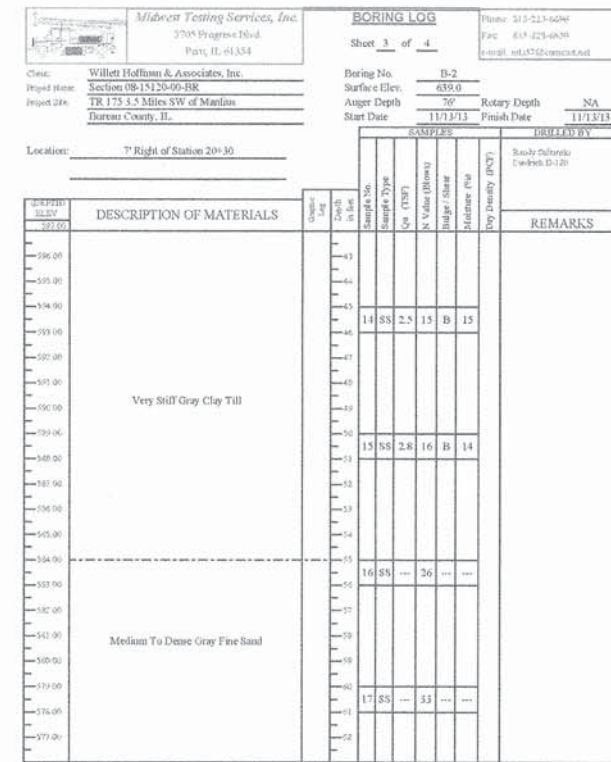
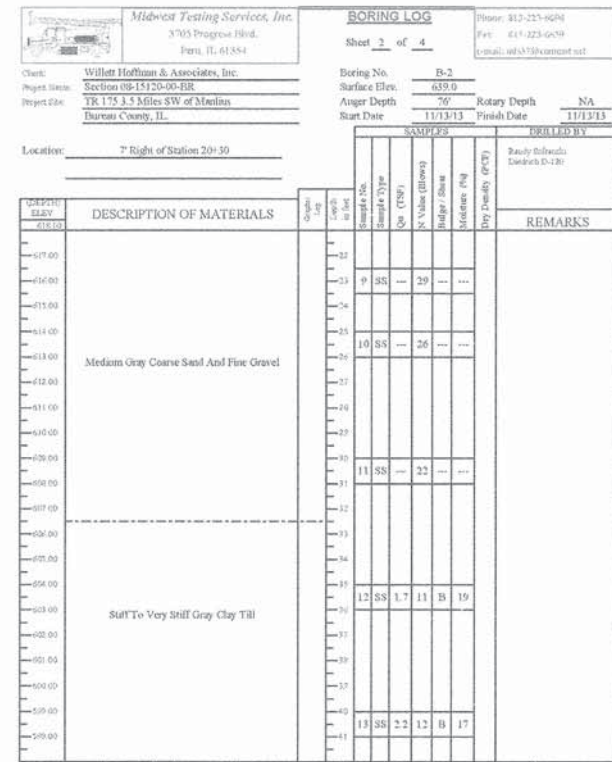
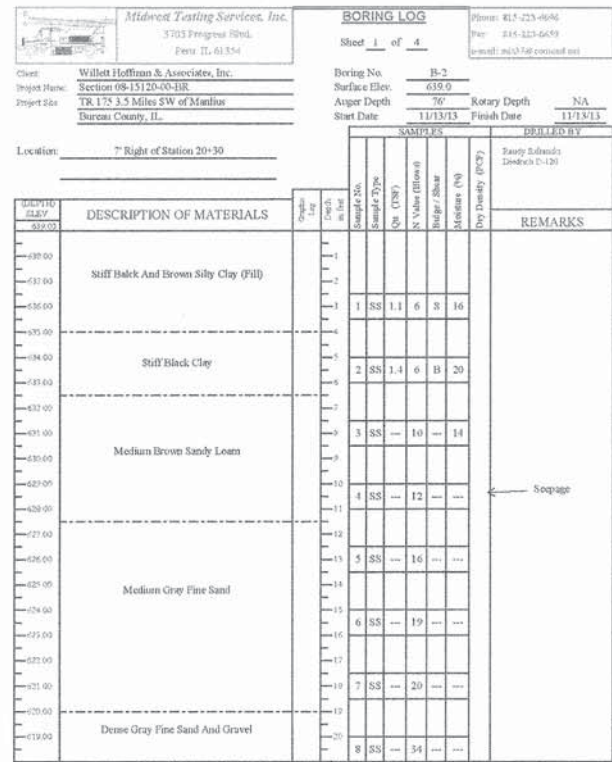
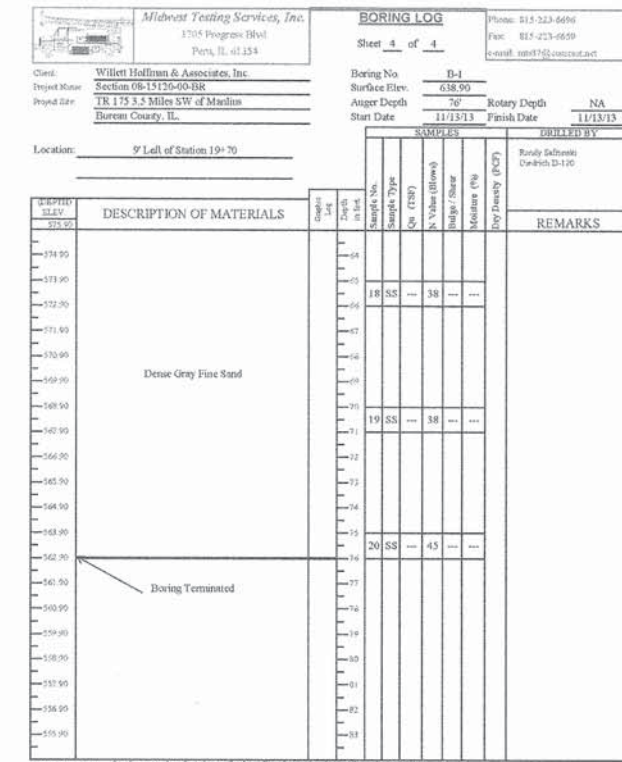
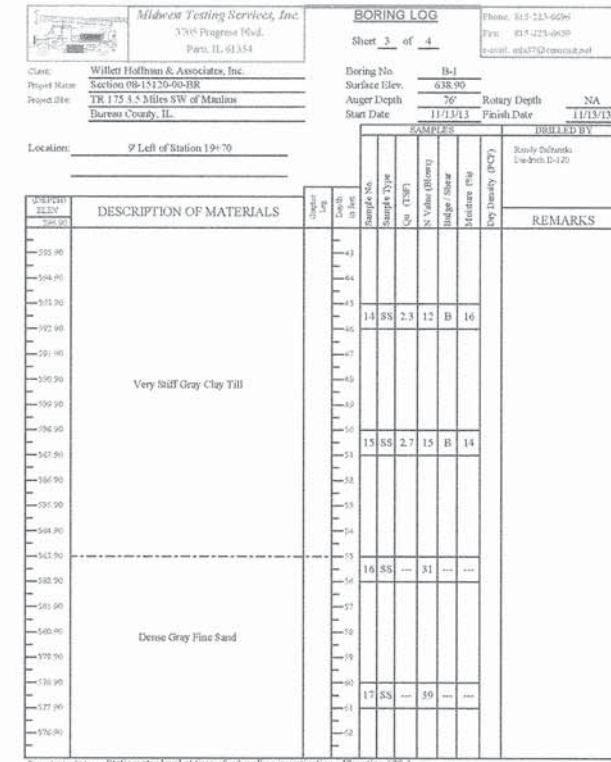
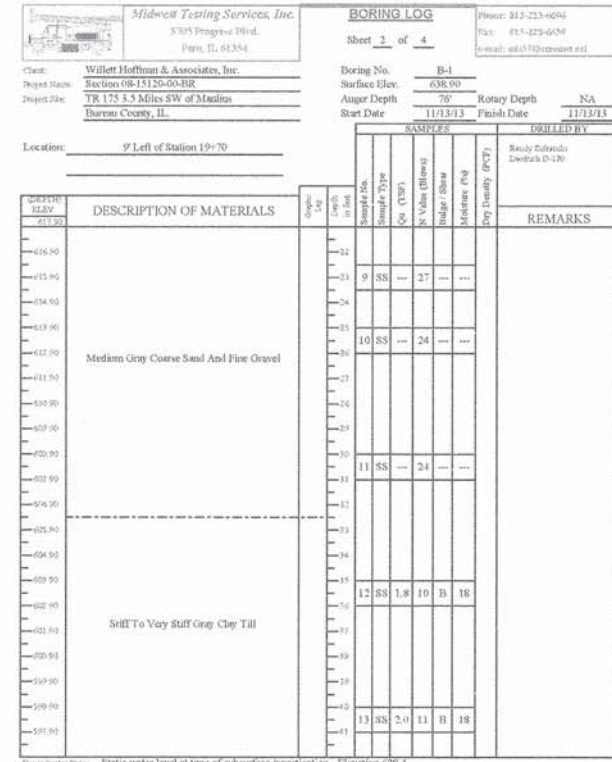
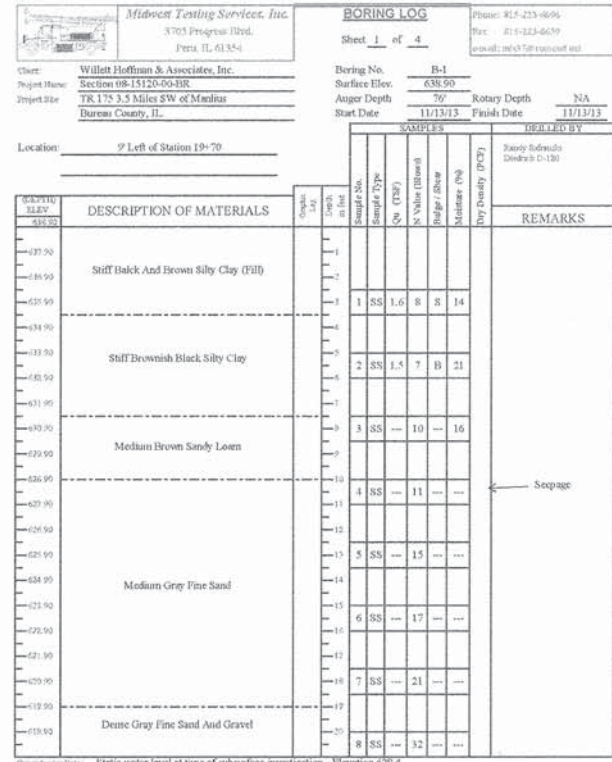
DESIGNED - MCW	REVISED -
CHECKED - MAC	REVISED -
DRAWN - DAN	REVISED -
CHECKED - BKC	REVISED -

BUREAU COUNTY  
 T.R. 175 (1950 NORTH) OVER SMITH DITCH  
 STATION 20+00

METAL SHELL PILE DETAILS  
 STRUCTURE NO. 006-4219

STRUCTURAL SHEET NO. 8 OF 9 SHEETS

TWP. RTE.	SECTION	COUNTY	TOTAL SHEETS	SHEET NO.
175	08-15120-00-BR	BUREAU	18	14
WHA* 1055013		CONTRACT NO. 87552		
[ILLINOIS] FED. AID PROJECT BROS-00110961				



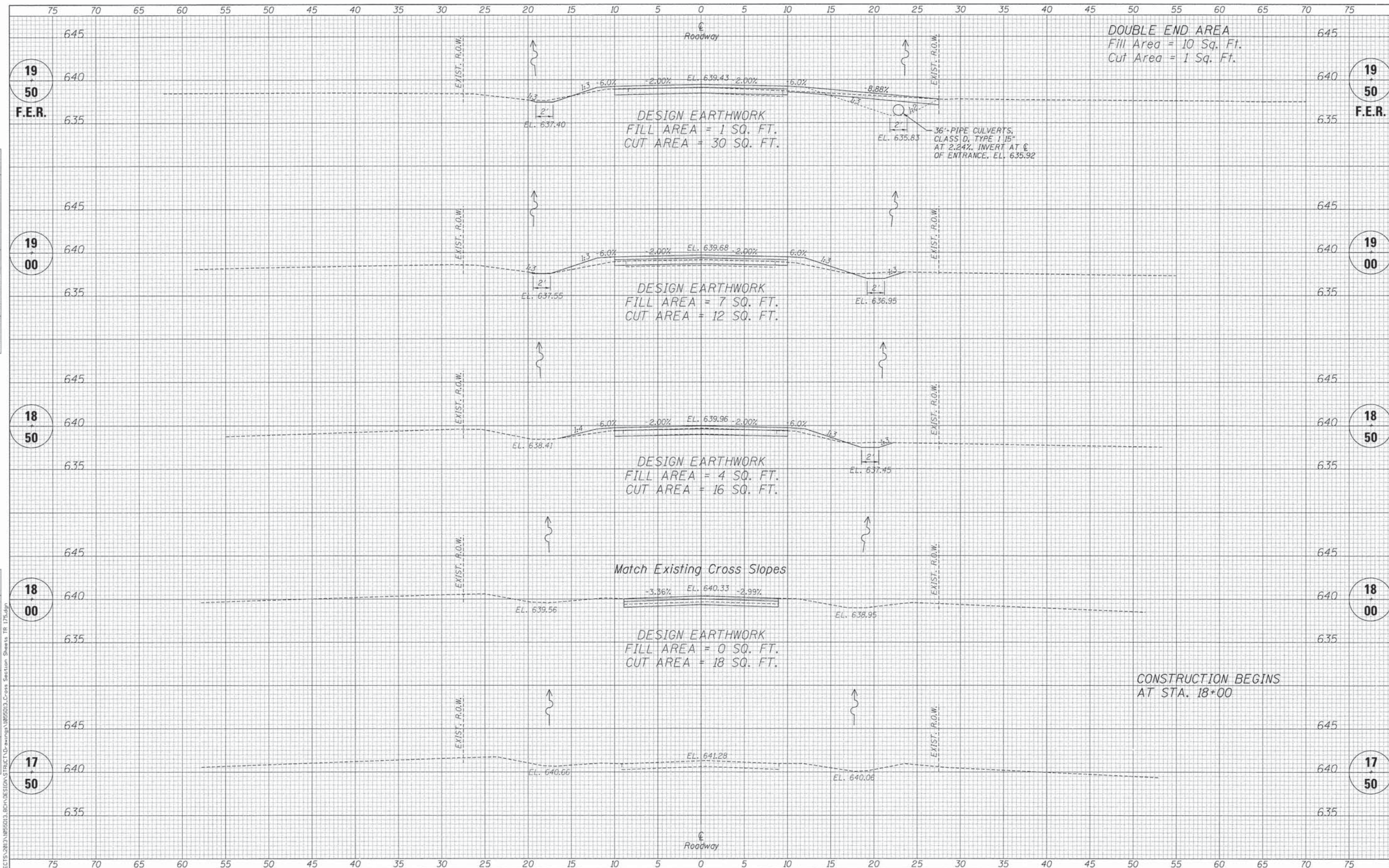
DESIGNED -	MCW	REVISED -	
CHECKED -	MAC	REVISED -	
DRAWN -	MCW	REVISED -	
CHECKED -	BKC	REVISED -	

**BUREAU COUNTY**  
**T.R. 175 (1950 NORTH) OVER SMITH DITCH**  
**STATION 20 + 00**

**BORING LOGS**  
**STRUCTURE NO. 006-4219**  
 STRUCTURAL SHEET NO. 9 OF 9 SHEETS

TWP. R.T.E.	SECTION	COUNTY	TOTAL SHEETS	SHEET NO.
175	08-15120-00-BR	BUREAU	18	15
WHA# 1055013		CONTRACT NO.	87552	
ILLINOIS FED. AID PROJECT BR05-00110961				

FILE: S:\PROJECTS\2013\1855013\_BORINGS\STRUCTURE\DWG\1855013\_BORINGS.dgn



DATE	
BY	
FINAL SURVEY	
NOTED	
TEMPLATE	
AREAS	
CHECKED	
NO.	

DATE	
BY	
ORIGINAL SURVEY	
NOTED	
TEMPLATE	
AREAS	
CHECKED	
NO.	

FILE = S:\PROJECTS\2017\1755013\BUREAU COUNTY STRUCTURE NO. 006-4219\Drawings\1755013-Cross Section Sheets TR 175.dgn

**WILLET HOFMANN ASSOCIATES INC.**  
 ENGINEERING ARCHITECTURE LAND SURVEYING  
 809 EAST 2ND STREET, DODON, IL 61021-0367  
 T: 815-284-3381 DESIGN FIRM: #184-009918

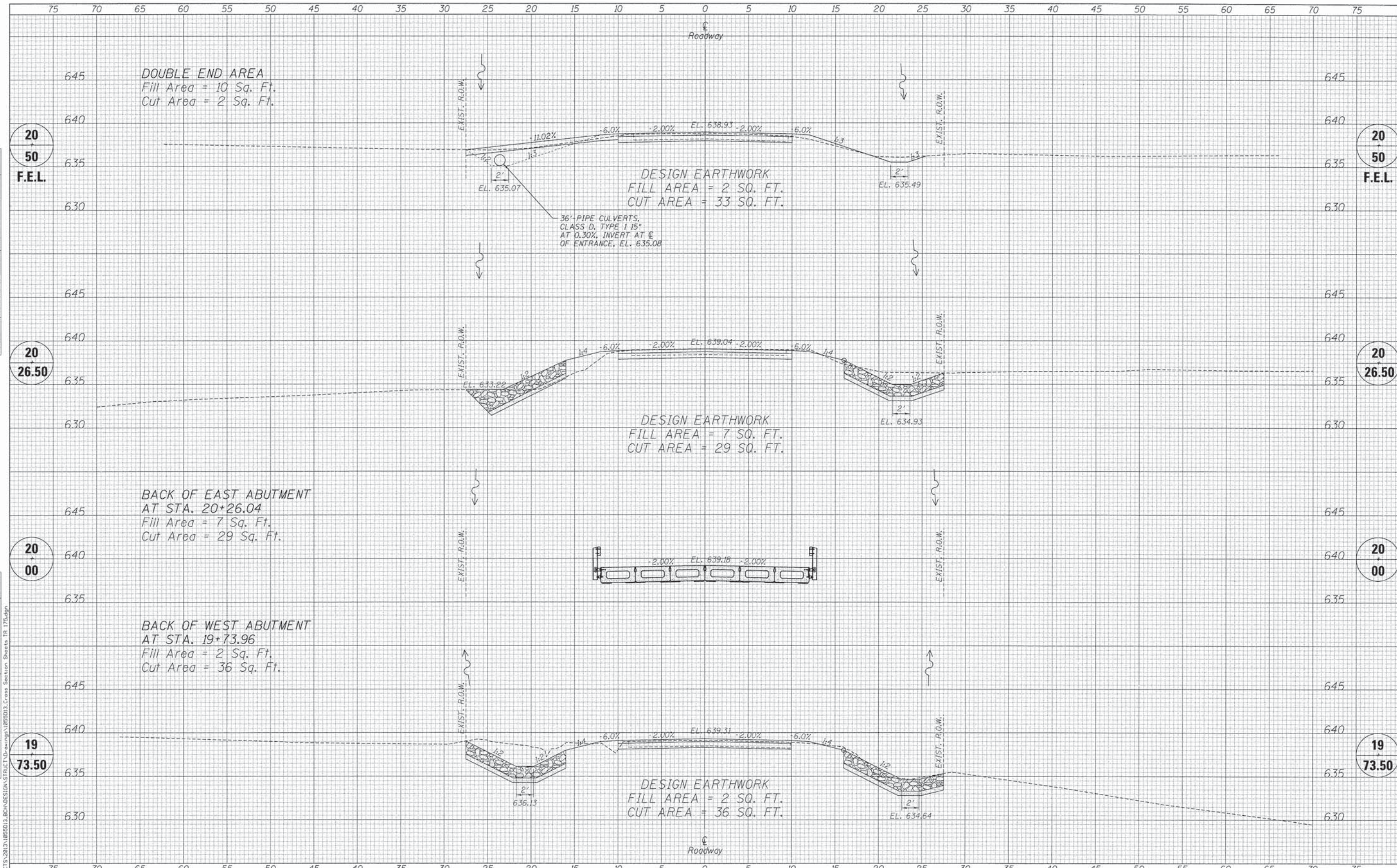
DESIGNED - MCW	REVISED -
CHECKED - MAC	REVISED -
DRAWN - DAN	REVISED -
CHECKED - BKC	REVISED -

**BUREAU COUNTY  
 T.R. 175 (1950 NORTH) OVER SMITH DITCH  
 STATION 20+00**

**CROSS SECTIONS  
 STRUCTURE NO. 006-4219**  
 SCALE: 1" = 20'-0" SHEET NO. 1 OF 3 SHEETS STA. 17+50 TO STA. 19+50

TWP. R1E.	SECTION	COUNTY	TOTAL SHEETS	SHEET NO.
17S	08-15120-00-BR	BUREAU	18	16
WHA* 1055D13			CONTRACT NO. 87552	
ILLINOIS FED. AID PROJECT BROS-00110961				

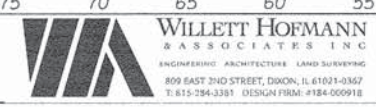




DATE	
BY	
SURVEYED	
NOTE BOOK	
AREAS CHECKED	

DATE	
BY	
SURVEYED	
NOTE BOOK	
AREAS CHECKED	

FILE: S:\PROJECTS\2017\1955012\_BCH\DESIGN\STRUCTURE\T.R.175\175.dgn  
 CROSS SECTION SHEETS TR 175.dgn

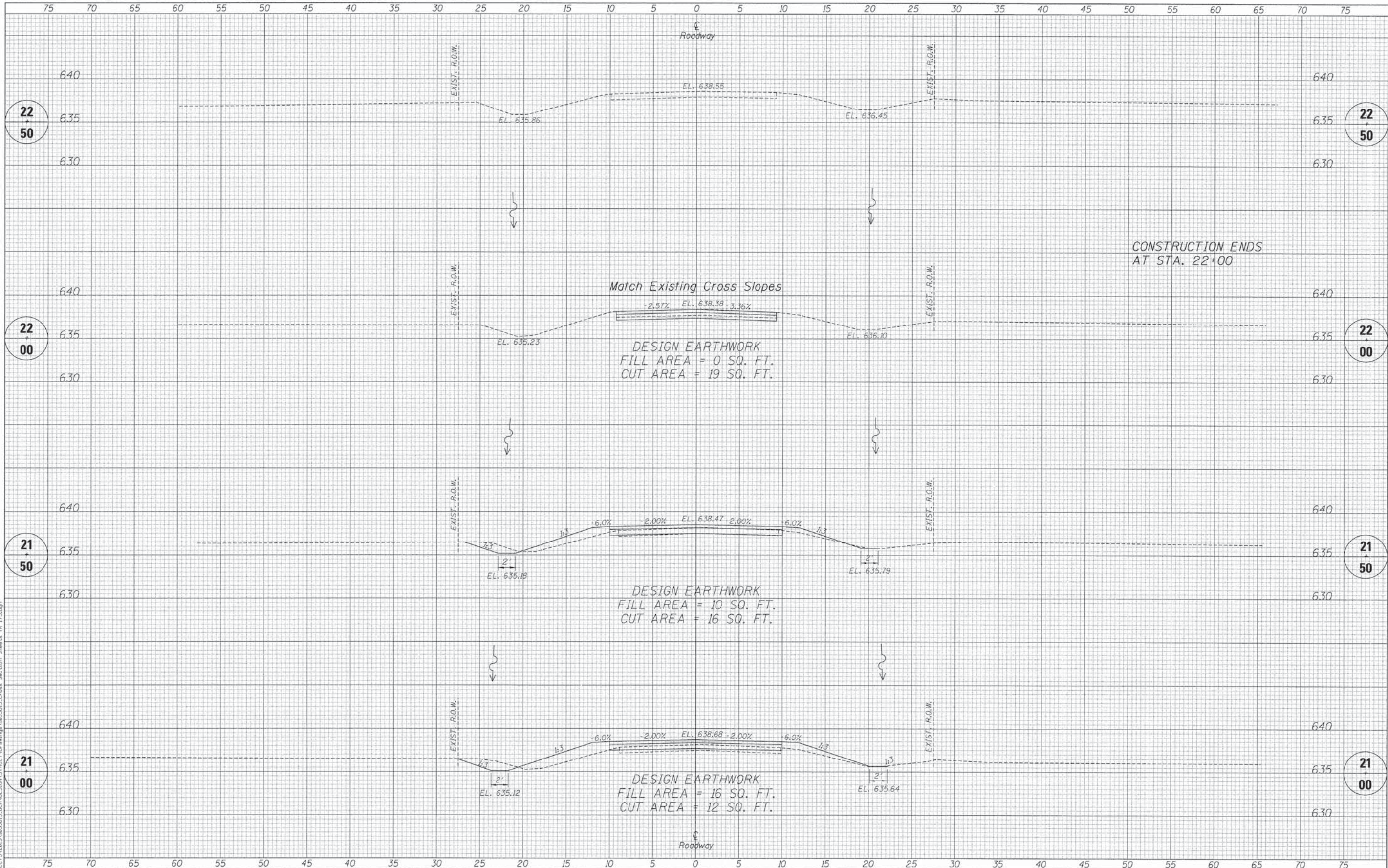


DESIGNED	- MCW	REVISED	-
CHECKED	- MAC	REVISED	-
DRAWN	- DAN	REVISED	-
CHECKED	- BKC	REVISED	-

**BUREAU COUNTY**  
**T.R. 175 (1950 NORTH) OVER SMITH DITCH**  
**STATION 20+00**

**CROSS SECTIONS**  
**STRUCTURE NO. 006-4219**  
 SCALE: 1" = 20'-0" SHEET NO. 2 OF 3 SHEETS STA. 19+73.50 TO STA. 20+50

TWP.	SECTION	COUNTY	TOTAL SHEETS	SHEET NO.
175	08-15120-00-BR	BUREAU	18	17
WHA# 1055D13			CONTRACT NO. 87552	
ILLINOIS FED. AID PROJECT BROS-00110961				



DATE	
BY	
DESIGNED	
CHECKED	
DRAWN	
REVISIONS	
NO.	

DATE	
BY	
DESIGNED	
CHECKED	
DRAWN	
REVISIONS	
NO.	

FILE: S:\PROJECTS\2017\1055013\_BROUDESIGN\STRUCTURE\1055013\_Cross Section Sheets FR 175.dgn



DESIGNED	- MCW	REVISED	-
CHECKED	- MAC	REVISED	-
DRAWN	- DAN	REVISED	-
CHECKED	- BKC	REVISED	-

**BUREAU COUNTY**  
**T.R. 175 (1950 NORTH) OVER SMITH DITCH**  
**STATION 20+00**

**CROSS SECTIONS**  
**STRUCTURE NO. 006-4219**  
 SCALE: 1" = 20'-0" SHEET NO. 3 OF 3 SHEETS STA. 21+00 TO STA. 22+50

TWP.	SECTION	COUNTY	TOTAL SHEETS	SHEET NO.
17S	08-15120-00-BR	BUREAU	18	18
WHA# 1055013			CONTRACT NO. 87552	
ILLINOIS FED. AID PROJECT BROS-0011(096)				