

TR ROUTE NO.	SEC	COUNTY	TOTAL SHEETS	SHEET NO
159A	*	DEKALB	18	1
ILLINOIS PROJECT BROS-0037(061)				
* 10-01109-01-BR				

# PLANS FOR PROPOSED SURFACE TRANSPORTATION PROGRAM - BRIDGE

## TR159A KESLINGER ROAD PROPOSED STRUCTURE NO. 019-5016 SECTION 10-01109-01-BR DEKALB COUNTY - AFTON ROAD DISTRICT PROJECT BROS-0037(061)

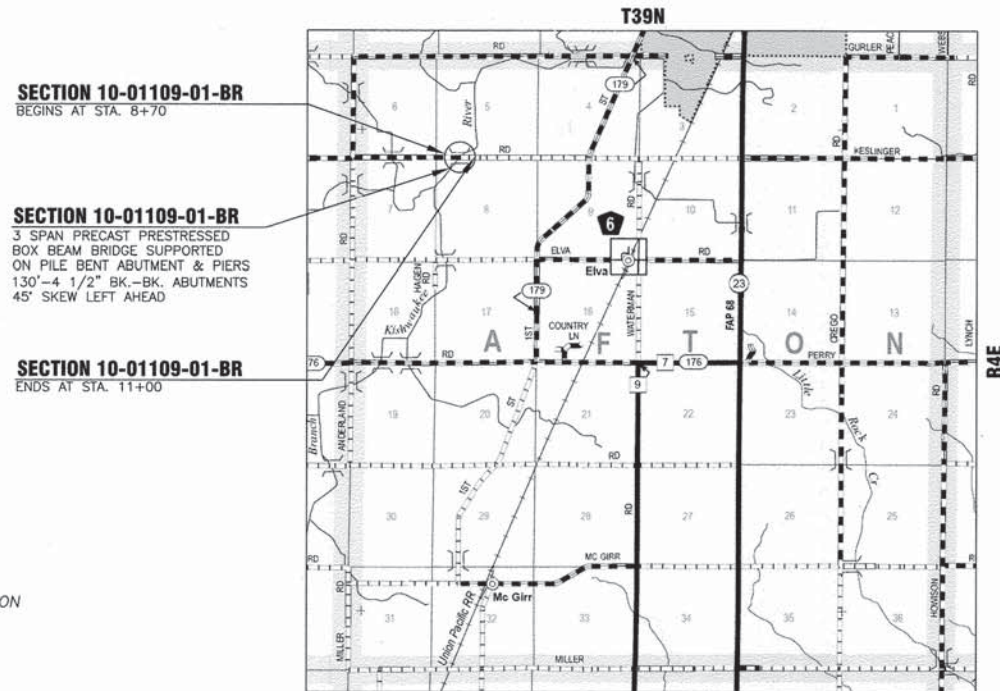
JOB NO. C-93-074-14

**INDEX OF SHEETS**

1. COVER SHEET
2. SUMMARY AND SCHEDULE OF QUANTITIES AND TYPICAL SECTIONS
3. PLAN AND PROFILE
4. GENERAL PLAN AND ELEVATION
5. RIPRAP DETAILS / STRUCTURE NOTES
- 6-8. DECK BEAM DETAILS
9. SUPER STRUCTURE DETAILS
10. SUBSTRUCTURE ABUTMENTS
11. SUBSTRUCTURE PIERS
12. PILING DETAILS
13. STEEL RAILING, TYPE SM
14. ROADWAY CROSS SECTIONS
- 15-18. SOIL BORINGS

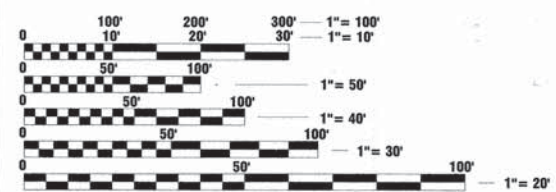
**STANDARDS:**

- 000001-06 STANDARD SYMBOLS, ABBREVIATIONS, AND PATTERNS
- 001001-02 AREAS OF REINFORCEMENT BARS
- 280001-07 TEMPORARY EROSION CONTROL SYSTEMS
- 515001-03 NAME PLATE FOR BRIDGES
- 630301-06 SHOULDER WIDENING FOR TYPE 1 (SPECIAL) GUARDRAIL TERMINALS
- 635006-03 REFLECTOR AND TERMINAL MARKER PLACEMENT
- 635011-02 REFLECTOR MARKER AND MOUNTING DETAILS
- 701006-05 OFF-RD OPERATIONS, 2L, 2W, 15' TO 24" FROM PAVEMENT EDGE
- 701301-04 LANE CLOSURE, 2L, 2W, SHORT TIME OPERATIONS
- 701901-03 TRAFFIC CONTROL DEVICES
- 720011-01 METAL POSTS FOR SIGNS, MARKERS & DELINEATORS
- 728001-01 TELESCOPING STEEL SIGN SUPPORT
- 729001-01 APPLICATIONS OF TYPES A & B METAL POSTS (FOR SIGNS & MARKERS)
- BLR 21-9 TYPICAL APPLICATION OF TRAFFIC CONTROL DEVICES
- BLR 22-7 TYPICAL APPLICATION OF TRAFFIC CONTROL DEVICES FOR CONSTRUCTION ON RURAL LOCAL HIGHWAYS



LOCATION MAP

GROSS LENGTH OF SECTION = 230 FEET (0.044 MILE)  
NET LENGTH OF SECTION = 230 FEET (0.044 MILE)



FULL SIZE PLANS HAVE BEEN PREPARED USING STANDARD ENGINEERING SCALES. REDUCED SIZED PLANS WILL NOT CONFORM TO STANDARD SCALES. IN MAKING MEASUREMENTS ON REDUCED PLANS, THE ABOVE SCALES MAY BE USED.

J.U.L.I.E.  
JOINT UTILITY LOCATION INFORMATION FOR EXCAVATION  
1-800-892-0123

CONTRACT NO. 87585

**DESIGN CRITERIA**

ROADWAY	DESIGN CLASSIFICATION	ADT 2008	DESIGN SPEED
KESLINGER ROAD	LOCAL ROAD	125	30
	3R GUIDELINES	5% TRUCKS	



Scott A. Brown  
DATE: 4/16/2014  
SCOTT A. BROWN  
DIXON, ILLINOIS  
ILLINOIS LICENSED PROFESSIONAL ENGINEER NO. 062-053649  
EXPIRES 11-30-2015



STATE OF ILLINOIS  
DEPARTMENT OF TRANSPORTATION  
DIVISION OF HIGHWAYS

SUBMITTED April 15 2014  
[Signature]  
TOWNSHIP ROAD COMMISSIONER

SUBMITTED April 15 2014  
[Signature]  
COUNTY ENGINEER

PASSED April 16 2014  
[Signature]  
DISTRICT 3 ENGINEER OF LOCAL ROADS & STREETS

RELEASED FOR BID BASED ON LIMITED REVIEW April 16 2014  
[Signature]  
DEPUTY DIRECTOR OF HIGHWAYS, REGION 2 ENGINEER

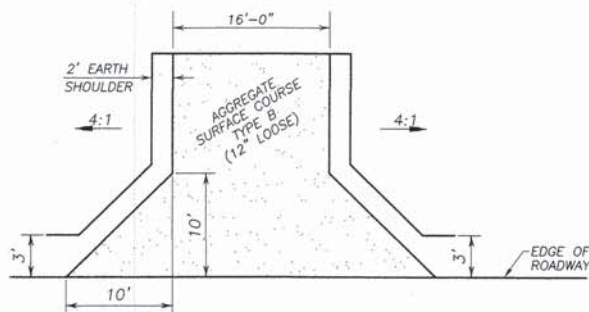
PRINTED BY THE AUTHORITY OF THE STATE OF ILLINOIS

**SUMMARY OF QUANTITIES**  
FUNDING CODE: 0011

CODE NUMBER	ITEM	UNIT	TOTAL QUANTITY
20700220	POROUS GRANULAR EMBANKMENT	CU YD	180
25100630	EROSION CONTROL BLANKET	SQ YD	570
28000250	TEMPORARY EROSION CONTROL SEEDING	POUND	200
28000400	PERIMETER EROSION BARRIER	FOOT	332
28000500	INLET AND PIPE PROTECTION	EACH	1
28100709	STONE DUMPED RIPRAP, CLASS A5	SQ YD	351
28200200	FILTER FABRIC	SQ YD	351
35101400	AGGREGATE BASE COURSE, TYPE B	TON	182
40200800	AGGREGATE SURFACE COURSE, TYPE B	TON	27
40600100	BITUMINOUS MATERIALS (PRIME COAT)	GALLON	40
40800050	INCIDENTAL HOT-MIX ASPHALT SURFACING	TON	60
48101200	AGGREGATE SHOULDERS, TYPE B	TON	30
50100100	REMOVAL OF EXISTING STRUCTURES	EACH	1
50200100	STRUCTURE EXCAVATION	CU YD	182
50200300	COFFERDAM EXCAVATION	CU YD	72
50201101	COFFERDAM (TYPE 1) (LOCATION - 1)	EACH	1
50201102	COFFERDAM (TYPE 1) (LOCATION - 2)	EACH	1
50300225	CONCRETE STRUCTURES	CU YD	146.6
50300260	BRIDGE DECK GROOVING	SQ YD	410
50300300	PROTECTIVE COAT	SQ YD	489
50400305	PRECAST PRESTRESSED CONCRETE DECK BEAMS (17" DEPTH)	SQ FT	3,848
50800205	REINFORCEMENT BARS, EPOXY COATED	POUND	20,810
50901050	STEEL RAILING, TYPE SM	FOOT	261
51201600	FURNISHING STEEL PILES HP12X53	FOOT	1,571
51202305	DRIVING PILES	FOOT	1,571
51203600	TEST PILE STEEL HP12X53	EACH	2
51500100	NAME PLATES	EACH	1
59100100	GEOCOMPOSITE WALL DRAIN	SQ YD	70
67100100	MOBILIZATION	L SUM	1
78200200	BIDIRECTIONAL PRISMATIC BARRIER REFLECTORS	EACH	6
X2020410	EARTH EXCAVATION (SPECIAL)	CU YD	75
X2501000	SEEDING, CLASS 2 (SPECIAL)	ACRE	0.12
X5030305	CONCRETE WEARING SURFACE, 5"	SQ YD	428
X7010216	TRAFFIC CONTROL & PROTECTION, (SPECIAL)	L SUM	1
Z0013798	CONSTRUCTION LAYOUT	L SUM	1
Z0046304	PIPE UNDERDRAINS FOR STRUCTURES 4"	FOOT	160

**QUANTITY NOTES:**

- Δ SPECIALTY ITEMS
  - \* SEE SPECIAL PROVISIONS
- PERIMETER EROSION BARRIER AND TEMPORARY EROSION CONTROL SEEDING ARE ESTIMATED QUANTITIES.  
LOCATIONS ARE TO BE DETERMINED IN FIELD BY THE ENGINEER



**FIELD ENTRANCE DETAIL**

	SURFACT/INCIDENTAL HMA
PG GRADE **	PG 64-22
DESIGN AIR VOIDS	4.0% @ N50 *
MIXTURE COMPOSITION	IL 9.5
FRICTION AGGREGATE	MIXTURE C
DENSITY TEST METHOD	SATISFACTION OF ENGINEER

\* Slight field adjustments may be made to achieve the desired air void content. Any changes to the HMA mixture shall be discussed with the Engineer prior to placement.

\*\* When RAP/RAS ABR exceeds 20 percent, the high and low virgin asphalt binder grades shall each be reduced by one grade (i.e. 25% ABR would require a virgin asphalt binder grade of PG 64-22 to be reduced to PG 58-28).

**SCHEDULE OF QUANTITIES**

**AGGREGATE BASE COURSE, TYPE B**

LOCATION	TON
STA. 8+70 TO STA. 9+19.4	90
STA. 10+49.6 TO STA. 11+00	92
<b>TOTAL</b>	<b>182 TON</b>

**AGGREGATE SURFACE COURSE, TYPE B**

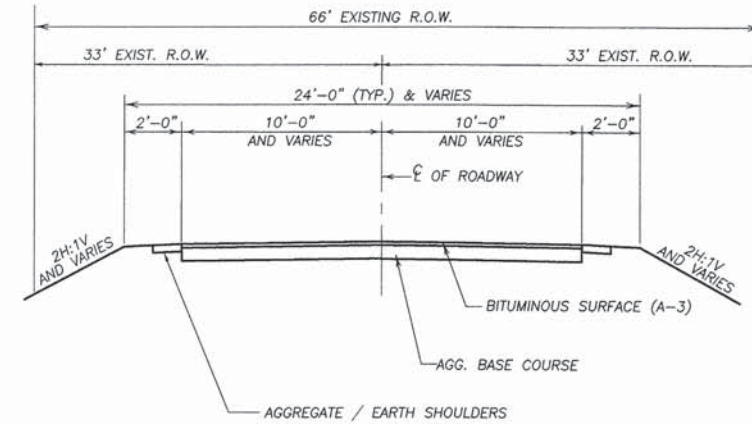
LOCATION	TON
F.E.L. STA. 9+08	27
<b>TOTAL</b>	<b>27 TON</b>

**AGGREGATE SHOULDERS, TYPE B**

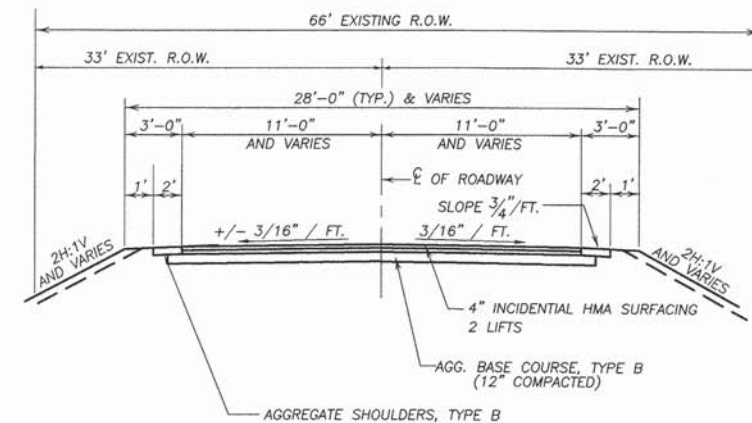
LOCATION	TON
RT. STA. 8+70 TO RT. STA. 9+07	6
LT. STA. 8+70 TO LT. STA. 9+31	9
LT. STA. 10+62 TO LT. STA. 11+00	9
RT. STA. 10+38 TO RT. STA. 11+00	6
<b>TOTAL</b>	<b>30 TON</b>

**INCIDENTAL HOT-MIX ASPHALT SURFACING**

LOCATION	TON
STA. 8+70 TO STA. 9+19.4	29
STA. 10+49.6 TO STA. 11+00	31
<b>TOTAL</b>	<b>60 TON</b>



**EXISTING TYPICAL SECTION**



**PROPOSED TYPICAL SECTION**

STA. 8+70 TO STA. 11+00  
(BRIDGE OMISSION FROM STA. 9+19.9 TO STA. 10+50.1)

**S.N. 019-5016**  
**SCHEDULE OF QUANTITIES**  
**SECTION 10-01109-01-BR**  
**KESLINGER ROAD**  
**DEKALB COUNTY**



DESIGNED - SB  
DRAWN - DJV  
CHECKED -  
DATE - 2/24/2014

REVISED - 03/26/2014  
REVISED -  
REVISED -  
REVISED -

**DEKALB COUNTY**  
**HIGHWAY DEPARTMENT**

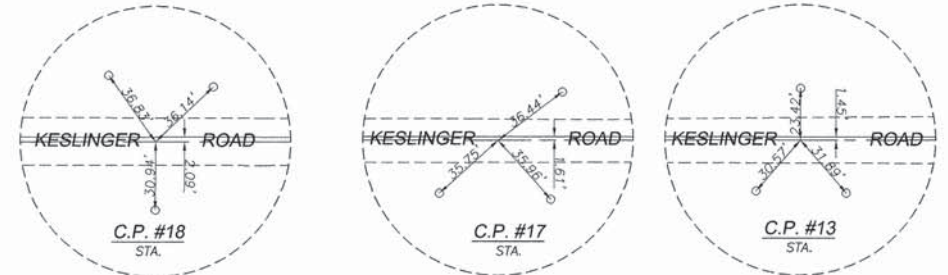
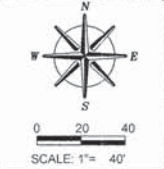
**SCHEDULE OF QUANTITIES**  
**S.N. 019-5016**

SHEET OF SHEETS STA. 9+85

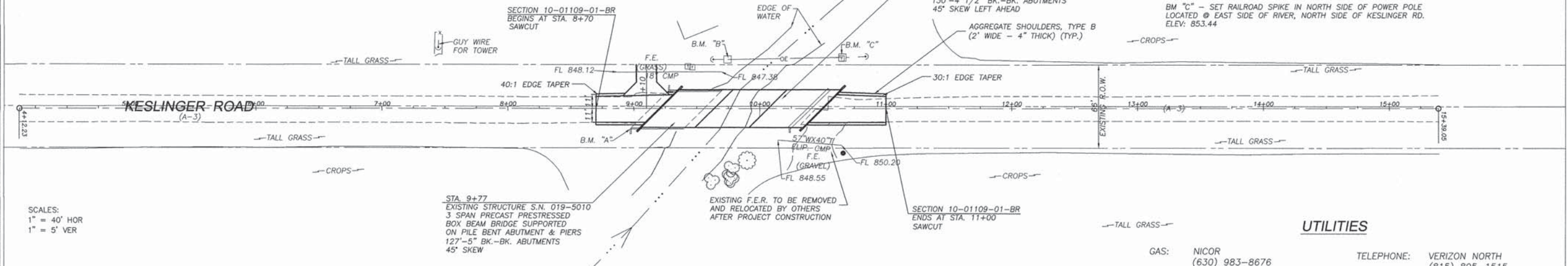
F.A.P. RTE.	SECTION	COUNTY	TOTAL SHEETS	SHEET NO.
-	10-01109-01-BR	DEKALB	18	2
			CONTRACT NO. 87585	
ILLINOIS FED. AID PROJECT				

T.R. ROUTE NO	SEC	COUNTY	TOTAL SHEETS	SHEET NO
159A	*	DEKALB	18	3

Contract No. 89585  
\* 10-01109-01-BR



**BENCHMARKS**  
 BM "A" - SET CHISELD "□" ON SOUTH WEST WINGWALL OF EXISTING BRIDGE STRUCTURE  
 ELEV: 857.35  
 BM "B" - SET COTTON SPINDLE IN NORTH SIDE OF POWER POLE LOCATED @ WEST SIDE OF RIVER, N. SIDE OF KESLINGER RD.  
 ELEV: 853.55  
 BM "C" - SET RAILROAD SPIKE IN NORTH SIDE OF POWER POLE LOCATED @ EAST SIDE OF RIVER, NORTH SIDE OF KESLINGER RD.  
 ELEV: 853.44

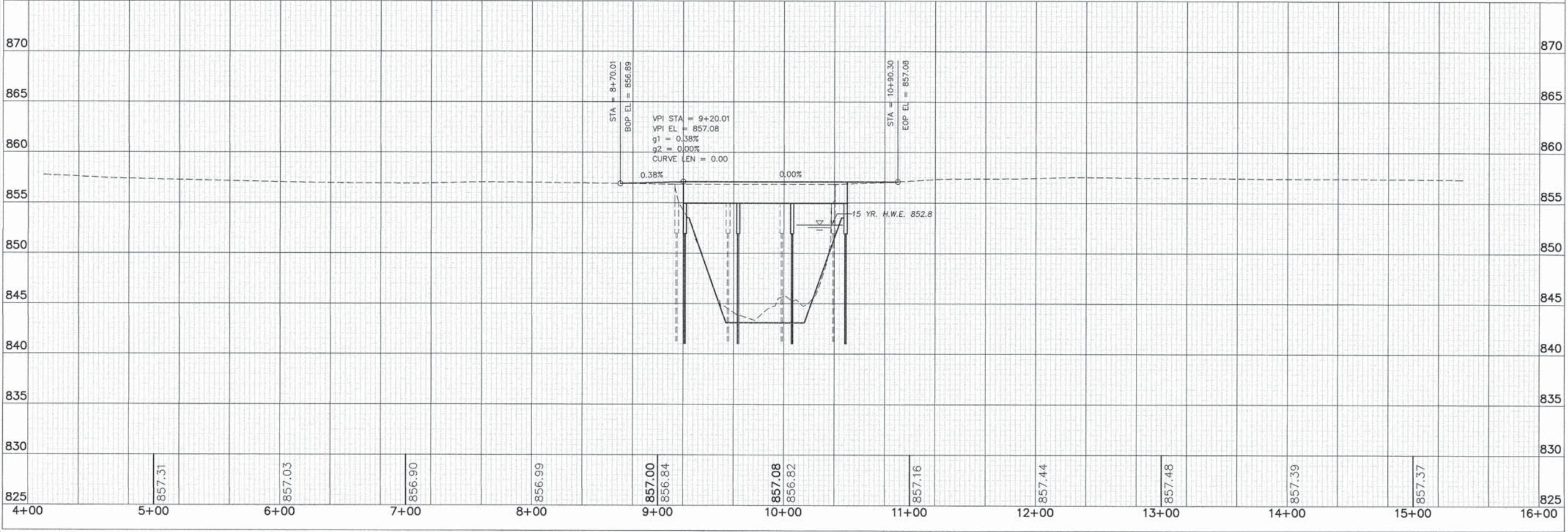


SCALES:  
 1" = 40' HOR  
 1" = 5' VER

**NOTES**  
 ALL STUMP, TREE REMOVAL (< 6IN DIA), CULVERTS AND BRUSH REMOVAL ARE CONSIDERED INCIDENTAL TO EARTH EXCAVATION.  
 ALL FENCES DISTURBED BY CONSTRUCTION ACTIVITIES SHALL BE RELOCATED AND RESTORED BY THE CONTRACTOR AS DIRECTED BY THE ENGINEER.  
 (COST CONSIDERED INCIDENTAL TO THE CONTRACT)  
 REQUIRED PAVEMENT SAWCUTS SHALL BE CONSIDERED INCIDENTAL TO EARTH EXCAVATION.

**UTILITIES**  
 GAS: NICOR (630) 983-8676 NAPERVILLE, ILLINOIS  
 TELEPHONE: VERIZON NORTH (815) 895-1515 SYCAMORE, ILLINOIS  
 ELECTRIC: COMMONWEALTH EDISON COMPANY (815) 756-9541 DEKALB, ILLINOIS

THE LOCATIONS OF UTILITY FACILITIES AS SHOWN ON THESE PLANS ARE AN ESTIMATE AND NOT INTENDED AS FIELD LOCATIONS FOR CONSTRUCTION. THE CONTRACTOR IS RESPONSIBLE FOR CONTACTING ALL UTILITIES PRIOR TO CONSTRUCTION AND CALLING J.U.L.I.E. AT 800-892-0123 FOR CONFIRMATION OF EXISTING UTILITY LOCATIONS.



REVISIONS	DATE	BY
	3/26/14	

DESIGNED BY: SB	DRAWN BY: BEH
CHECKED BY: J. J. ...	DATE: 3/26/14

**wendler**  
 wendler engineering services, inc.  
 engineers - surveyors - scientists  
 www.wendlereng.com ph: 815.288.2281  
 Illinois Professional Design Firm No. 184-000848

PLAN & PROFILE OF SECTION 10-01109-01-BR KESLINGER ROAD FOR DEKALB COUNTY HIGHWAY DEPT.

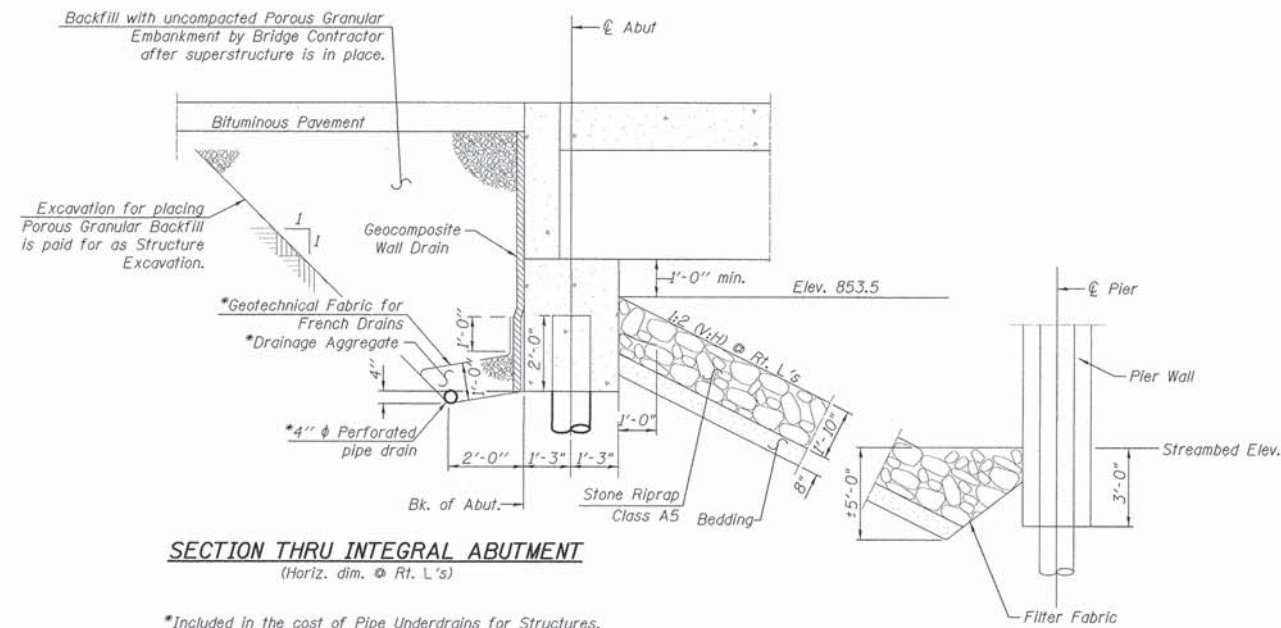
SHEET TITLE  
 PLAN & PROFILE

JOB NUMBER  
 2130331

DATE  
 12/20/2013

SHEET NO.  
 3 of 18

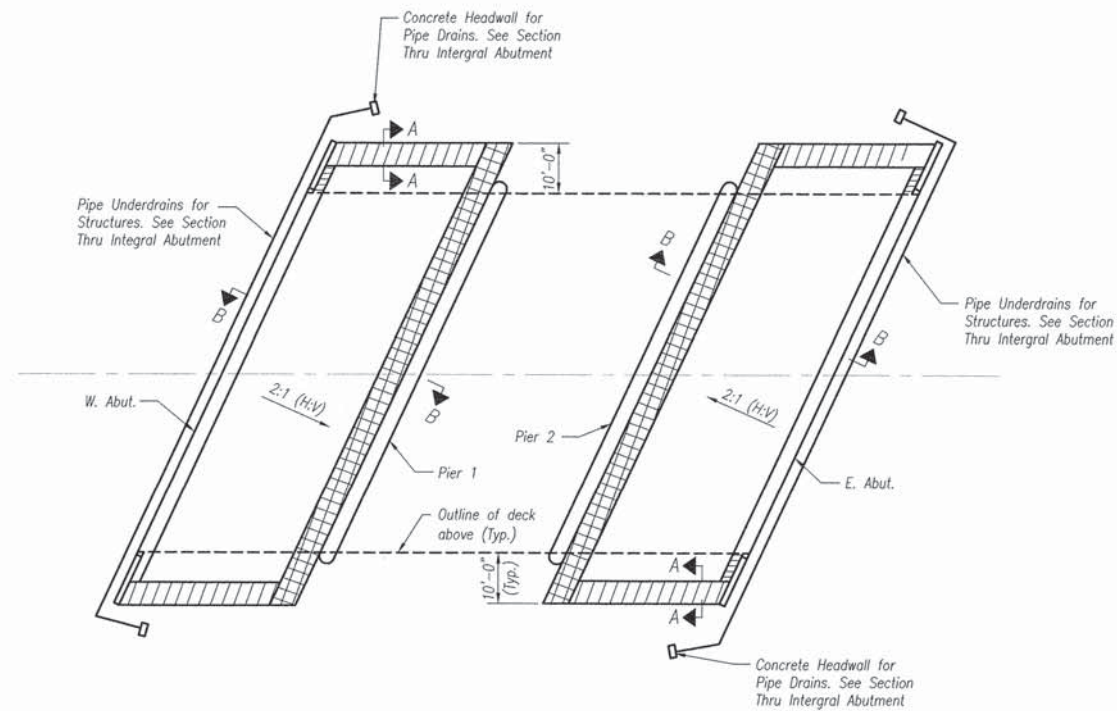




**SECTION THRU INTEGRAL ABUTMENT**  
(Horiz. dim. @ Rt. L's)

\*Included in the cost of Pipe Underdrains for Structures.

Note:  
All drainage system components shall extend to 2'-0" from the end of each wingwall except an outlet pipe shall extend until intersecting with the side slopes. The pipes shall drain into concrete headwalls. (See Article 601.05 of the Standard Specifications and Highway Standard 601101).



**RIPRAP LAYOUT PLAN**

**GENERAL NOTES**

Concrete from the existing structure shall not be buried within 200 feet of the proposed structure.

Plans of the existing structure are available by written request from Dekalb County.

The utilities shown on the plans are shown in approximate location only. The contractor shall determine exact locations of all utilities within the project limits before beginning construction. The contractor shall coordinate all construction activities with affected utilities and by contacting J.U.L.I.E. at 1-800-892-0123. The contractor shall be responsible for contacting the utilities prior to construction.

Fasteners shall be high strength bolts, AASHTO M164, Type 3, Bolts 3/4" diameter, open holes 13/16 inch diameter, unless otherwise noted.

Reinforcement bars shall conform to the requirements of ASTM A706 Grade 60.

Backfill shall be placed behind the abutments after the superstructure has been poured and the falsework removed. See Article 502.10 of the Standard Specifications.

The contractor shall make allowance for the deflection of forms, shrinkage and settlement of falsework, in addition to allowance for dead load deflection.

The contractor shall drive one test pile in a permanent location at the west pier, and one test pile at the east abutment as directed by the engineer before ordering the remainder of piles.

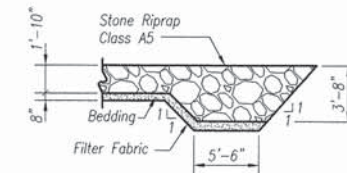
All construction joints shall be bonded.

Concrete sealer shall be applied to the designated areas of the abutments and piers.

Layout of the slope protection system may be varied to suit ground conditions in the field as directed by the engineer.

All (embedded and separate) bearing plates, side retainers, anchor bolts, nuts, washers and pintles shall be galvanized according to AASHTO M111 or M232 as applicable.

If a portion of the concrete encasement is under water, reinforcement may be placed underwater into forms. Concrete shall be tremied according to Article 503.08 of the Standard Specifications to an elevation of 1'-0" above the water at the time of construction.



**SECTION A-A  
FLANK STONE RIPRAP DETAIL**



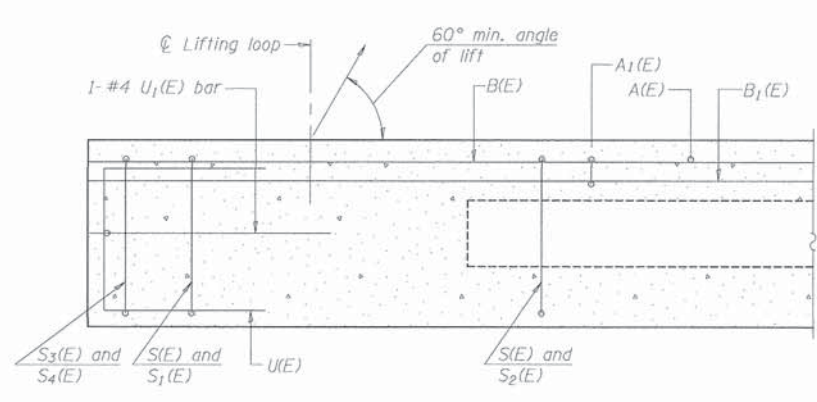
USER NAME = #USER#	DESIGNED - SB	REVISED - 03/26/2014
WES JOB # = 21109331	DRAWN - DJV	REVISED -
PLOT SCALE = #SCALE#	CHECKED -	REVISED -
PLOT DATE = #DATE#	DATE - 2/25/2014	REVISED -

**DEKALB COUNTY  
HIGHWAY DEPARTMENT**

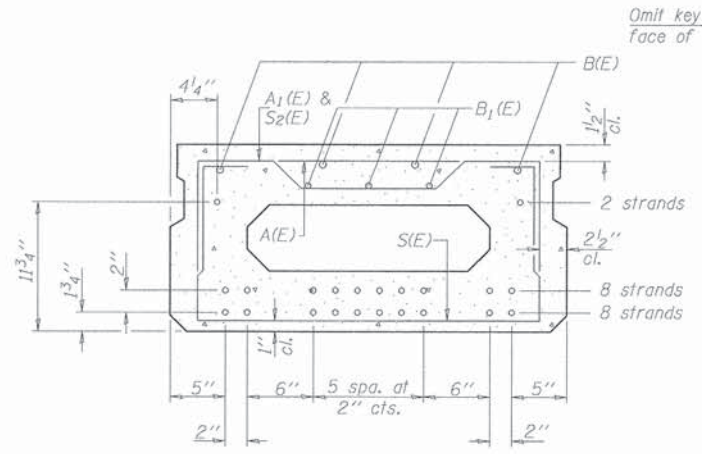
**RIPRAP DETAILS / STRUCTURE NOTES  
S.N. 019-5016**

SHEET - OF - SHEETS STA. 9+85

T.R. RTE.	SECTION	COUNTY	TOTAL SHEETS	SHEET NO.
159A	10-01109-01-BR	DEKALB	18	5
CONTRACT NO. 87585				
[ILLINOIS] FED. AID PROJECT				



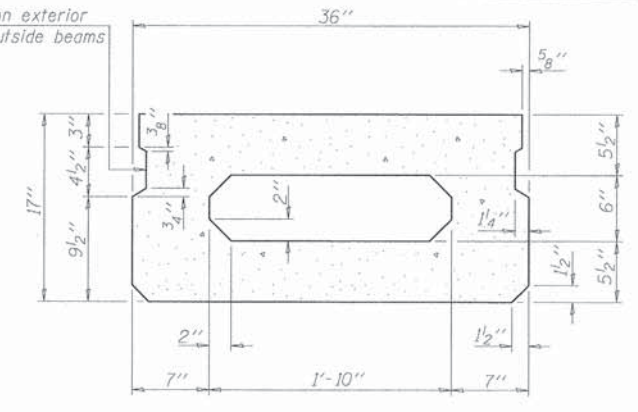
SECTION A-A



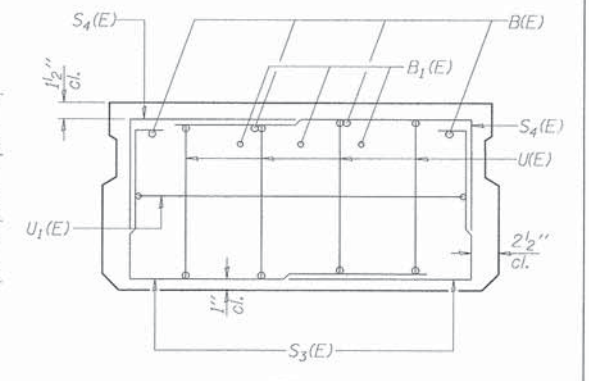
SECTION B-B

(Showing reinforcement and permissible strand locations)

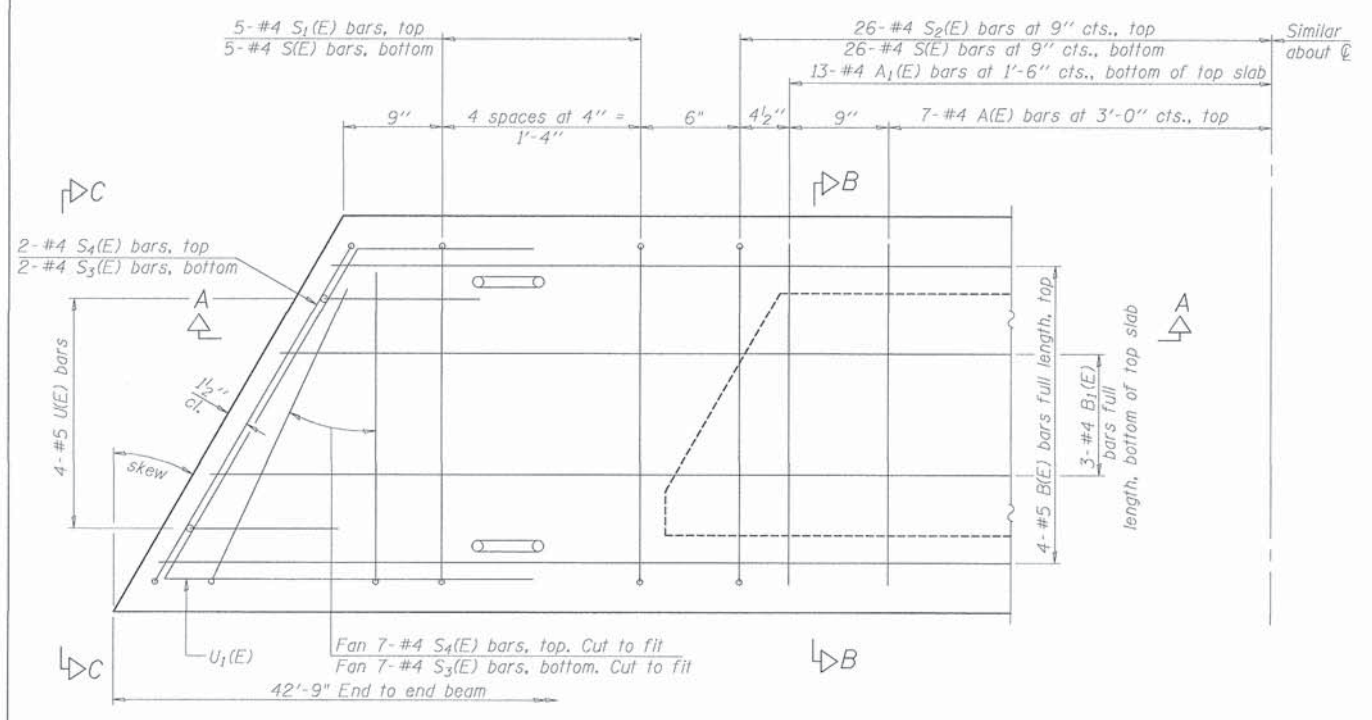
Note: Place the number of strands specified in each row symmetrically about the centerline of beam in the permissible strand locations shown.



SECTION B-B  
(Showing dimensions)

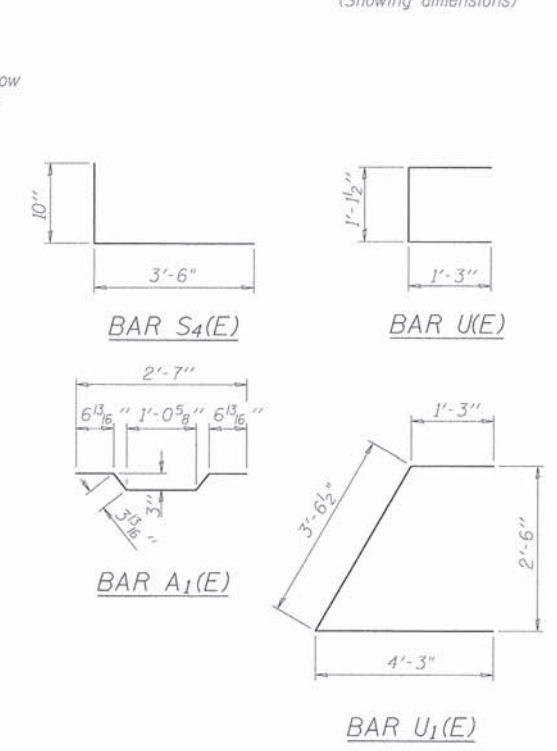


VIEW C-C



PLAN VIEW

Note: Spacing of S(E) and S2(E) bars may be adjusted up to 4" in the immediate area of the transverse tie diaphragms to miss the block outs for the transverse ties.



MINIMUM BAR LAP  
#4 bar = 2'-0"  
#5 bar = 2'-6"

BAR LIST  
ONE BEAM ONLY  
(For information only)

Bar	No.	Size	Length	Shape
A(E)	14	#4	2'-7"	—
A1(E)	26	#4	2'-10"	—
B(E)	4	#5	42'-6"	—
B1(E)	3	#4	42'-6"	—
S(E)	62	#4	5'-9"	—
S1(E)	10	#4	4'-3"	]]
S2(E)	52	#4	4'-6"	]]
S3(E)	18	#4	5'-1"	]]
S4(E)	18	#4	4'-4"	]]
U(E)	8	#5	3'-8"	—
U1(E)	2	#4	9'-1"	—

Note: See sheet 7 of 18 for additional details and Bill of Material.

PD-1736-L

7-1-10



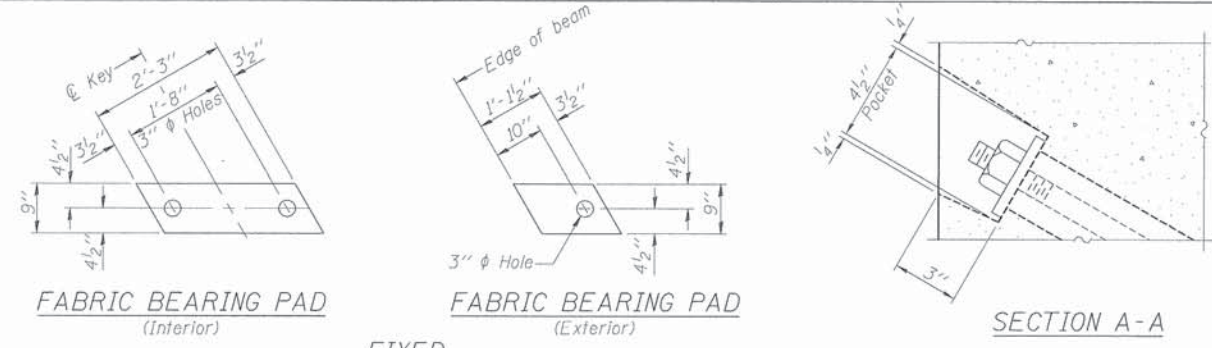
USER NAME *#USER#	DESIGNED -	REVISED -
WES JOB #2130331	DRAWN -	REVISED -
PLOT SCALE *#SCALE#	CHECKED -	REVISED -
PLOT DATE *#DATE#	DATE -	REVISED -

DEKALB COUNTY  
HIGHWAY DEPARTMENT

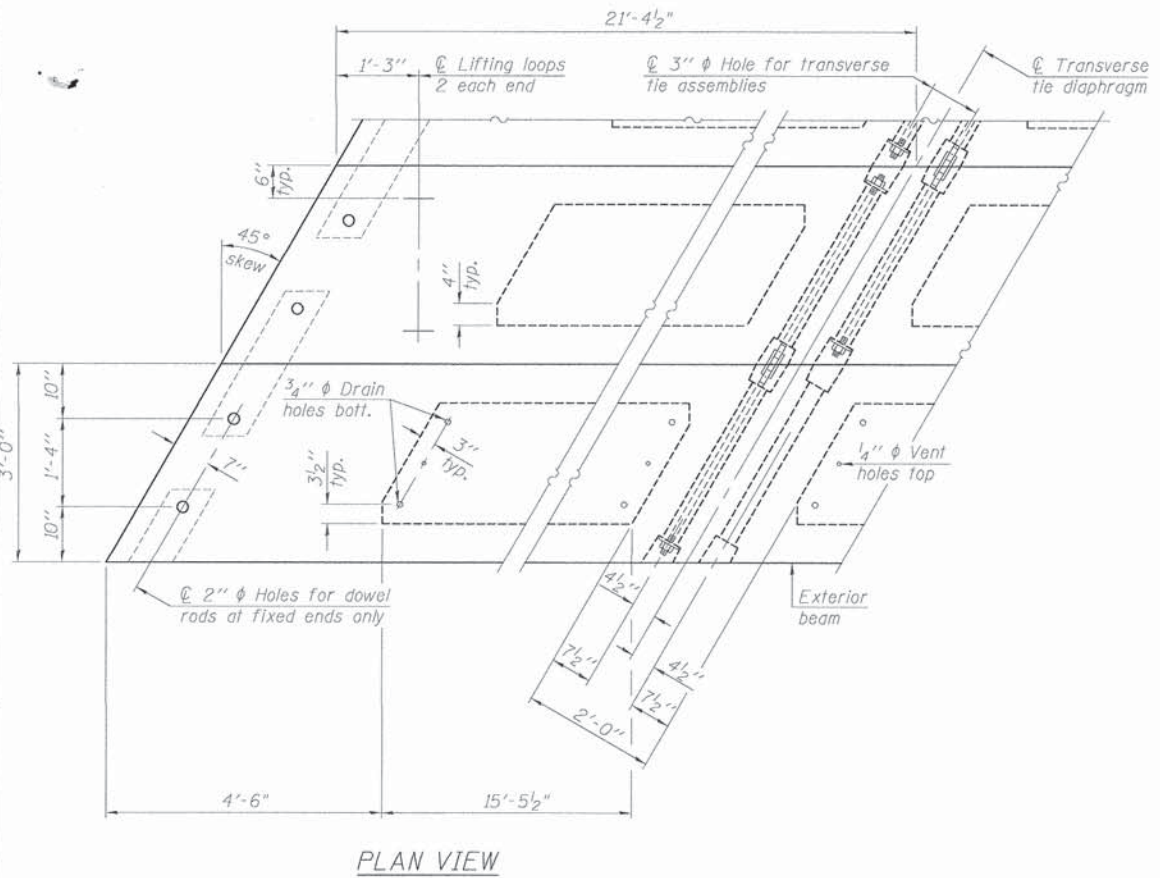
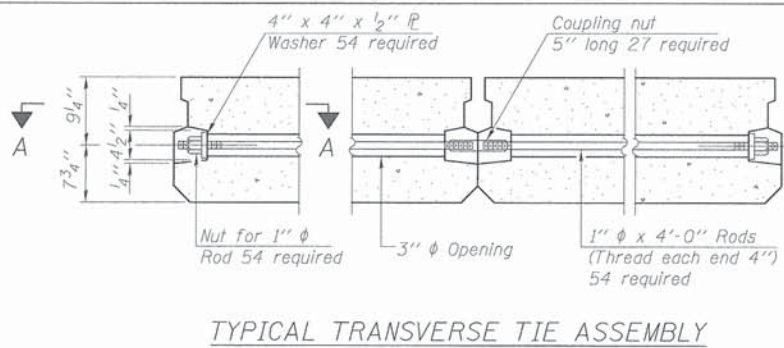
17" x 36" PPC DECK BEAM  
STRUCTURE NO. 019-5016

SCALE: SHEET OF SHEETS STA. TO STA.

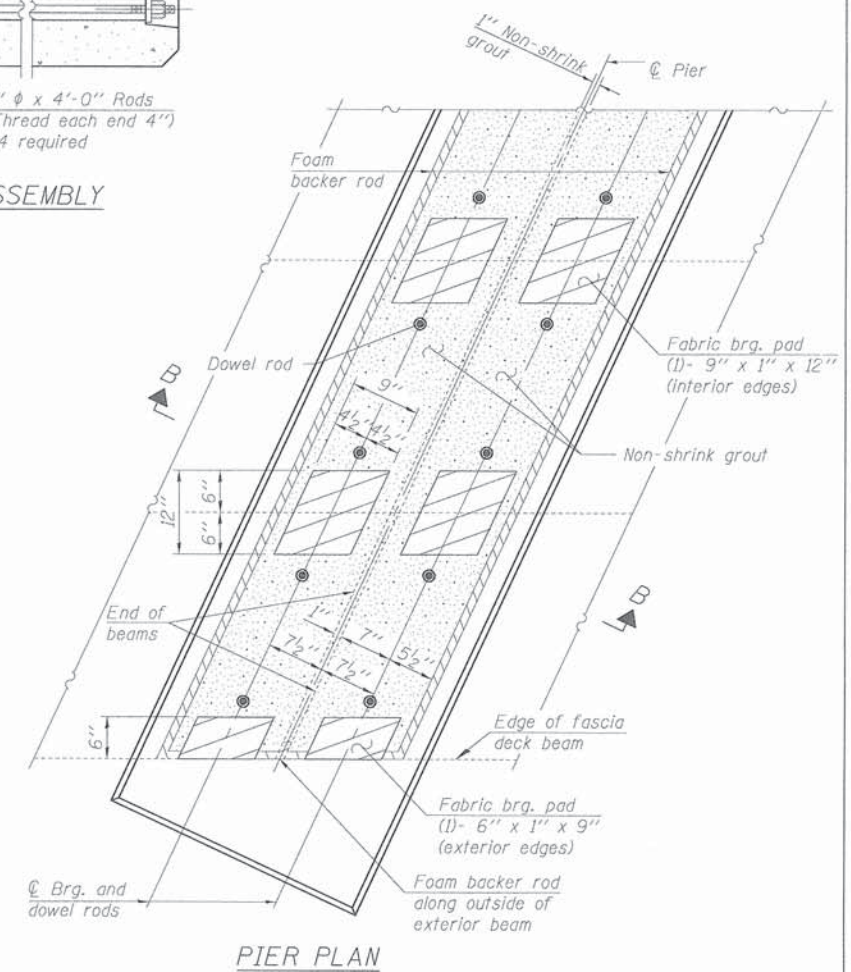
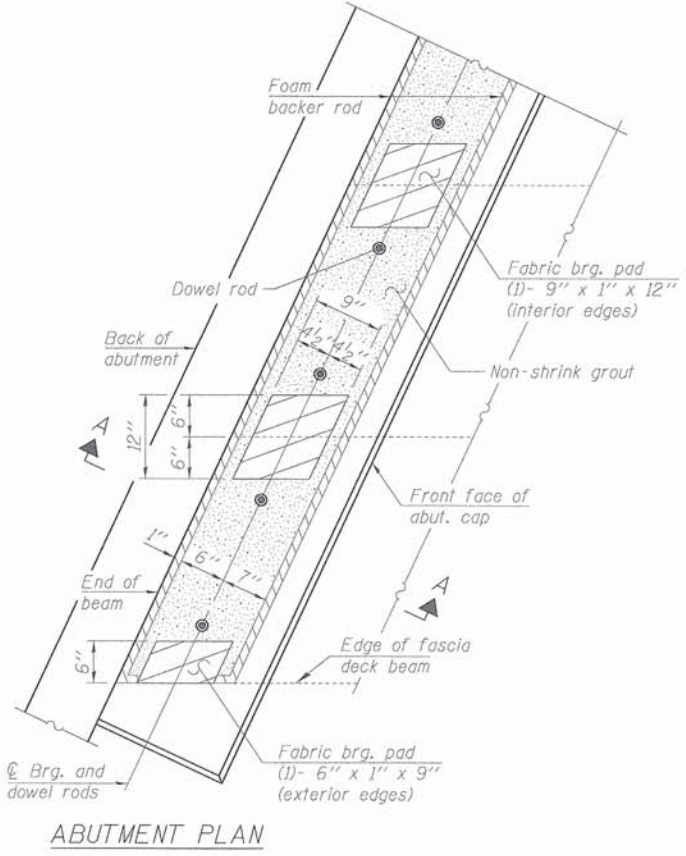
T.R. RTE.	SECTION	COUNTY	TOTAL SHEETS	SHEET NO.
159A	10-01109-01-BR	DEKALB	18	6
CONTRACT NO. 87585			ILLINOIS FED. AID PROJECT	



**Notes:**  
 All bearing pads shall be 1" thick.  
 Omit holes when using expansion bearings.  
 Expansion bearing pad shall be bonded to the substructure.



Note: Connect beams in pairs with the transverse tie configuration shown.



**Notes:**  
 The bearing seat surfaces shall be adjusted by shimming the bearing to assure firm and even bearing prior to placement of grout. 2-1/8" fabric adjusting shims of the dimensions of the exterior bearing pad shown shall be provided for each bearing.

**NOTES**

Prestressing steel shall be uncoated high strength, low relaxation 7-wire strand, Grade 270. The nominal diameter shall be 1/2" and the nominal cross-sectional area shall be 0.153 sq. in. The 1" rods in the transverse tie assembly shall be tightened to a snug fit and the threads set. Pockets on exterior faces of bridge shall be filled with grout after transverse tie assembly is in place.

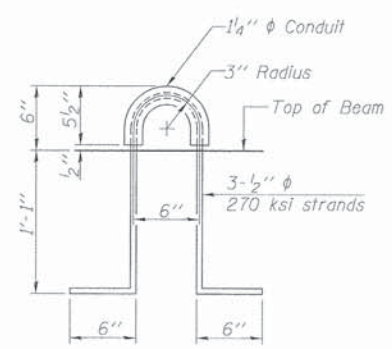
Reinforcement bars shall conform to ASTM A 706, Grade 60. (See Special Provisions). Two 1/8" fabric adjusting shims of the dimensions of the exterior bearing pad shall be provided for each bearing pad location.

A minimum 2 1/2" lifting pin shall be used to engage the lifting loops during handling.

Corrosion Inhibitor, per Article 1020.05(b)(12) and 1021.06 of the Standard Specifications, shall be used in the concrete for precast prestressed concrete deck beams.

Compressive strength of prestressed concrete, f'c, shall be 6000 psi.

Compressive strength of prestressed concrete at release, f'ci, shall be 5000 psi.



**BILL OF MATERIAL**

Precast Prestressed Conc. Deck Bms. (17" depth)	Sq. Ft.	3848
---	---------	------



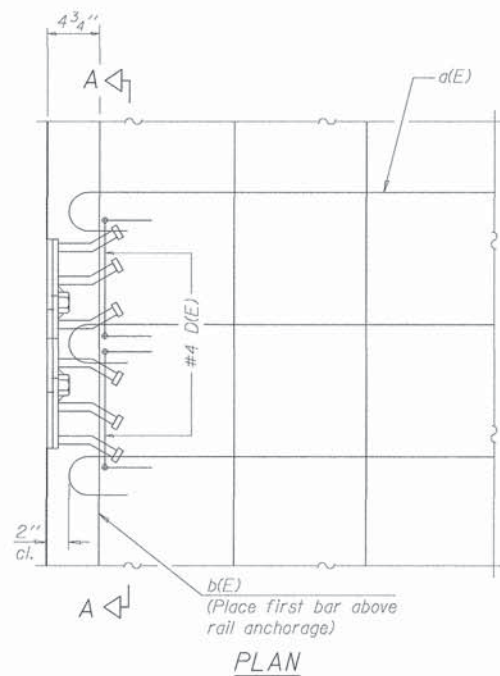
USER NAME * #USER#	DESIGNED -	REVISED -
WES JOB #2138331	DRAWN -	REVISED -
PLOT SCALE * #SCALE#	CHECKED -	REVISED -
PLOT DATE * #DATE#	DATE -	REVISED -

**DEKALB COUNTY  
HIGHWAY DEPARTMENT**

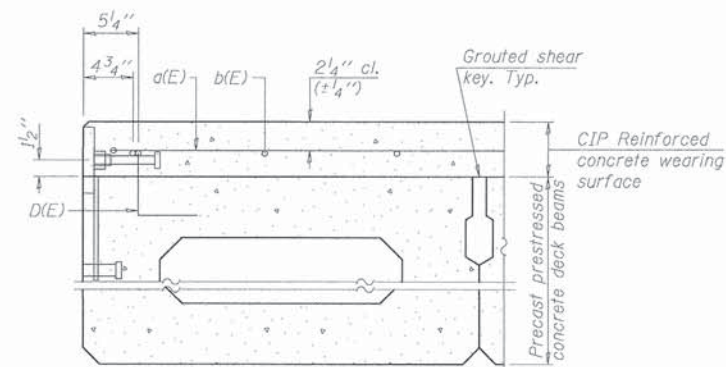
**17" x 36" PPC DECK BEAM DETAILS  
STRUCTURE NO. 019-5016**

SCALE: SHEET OF SHEETS STA. TO STA.

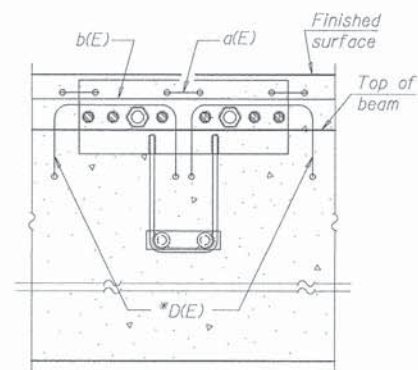
T.R. RTE.	SECTION	COUNTY	TOTAL SHEETS	SHEET NO.
159A	10-01109-01-BR	DEKALB	18	7
CONTRACT NO.			87585	
ILLINOIS FED. AID PROJECT				



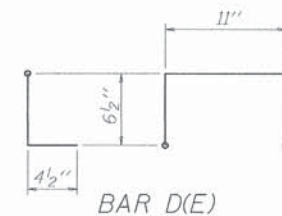
Notes:  
Formwork necessary for the wearing surface may be secured utilizing the bottom rail anchorage inserts and/or additional inserts cast into the beam.



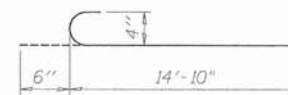
SECTION THRU FASCIA BEAM



SECTION A-A



\* Place 2-#4 D(E) bars in beam at each post location as shown. D(E) bar included in cost of beam.



**MINIMUM BAR LAP**  
#4 bar = 2'-7"



PDS-S-R34-D

1-27-12



USER NAME = #USER#	DESIGNED -	REVISED -
WES JOB #2130333	DRAWN -	REVISED -
PLOT SCALE = #SCALE#	CHECKED -	REVISED -
PLOT DATE = #DATE#	DATE -	REVISED -

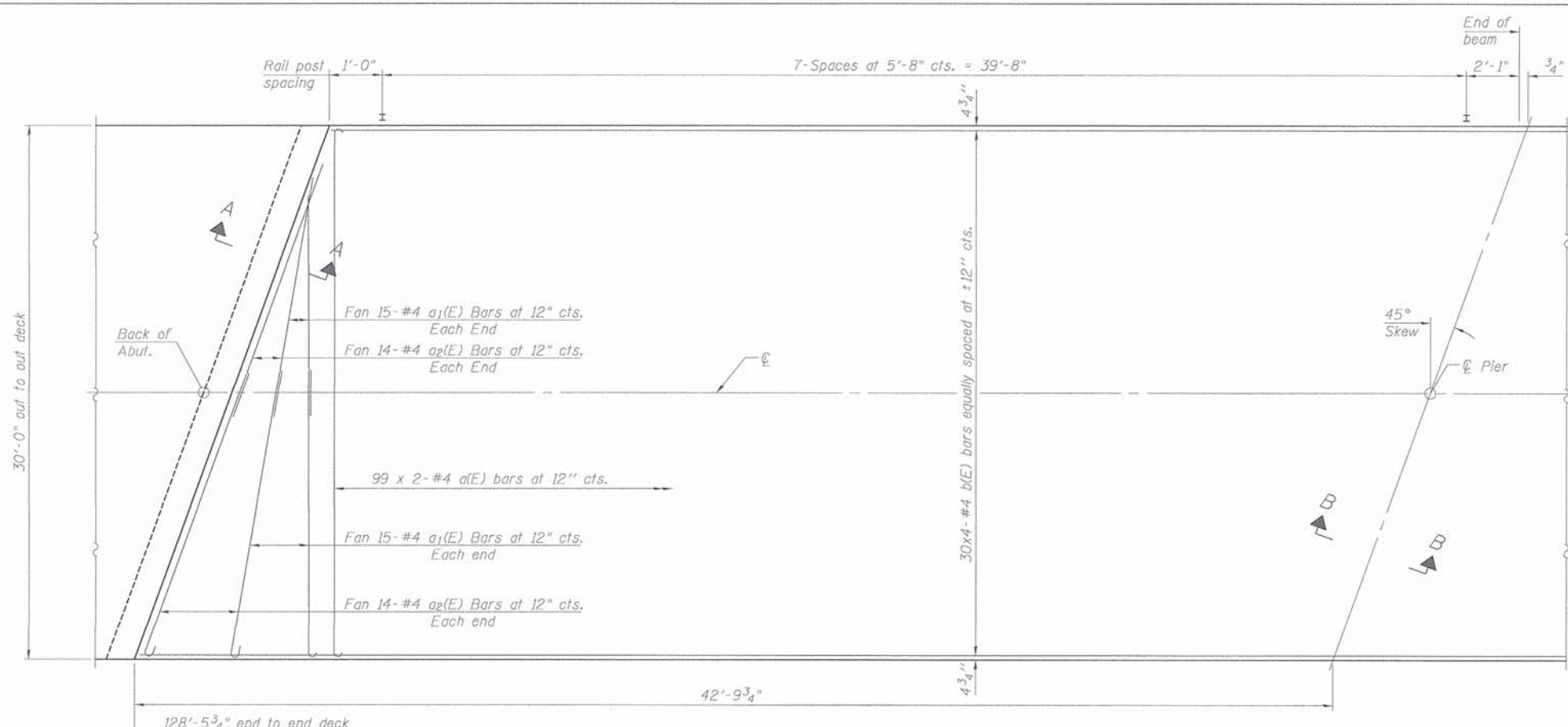
**DEKALB COUNTY  
HIGHWAY DEPARTMENT**

**17"x36" P.P.C. DECK BEAM DETAILS  
STRUCTURE NO. 019-5016**

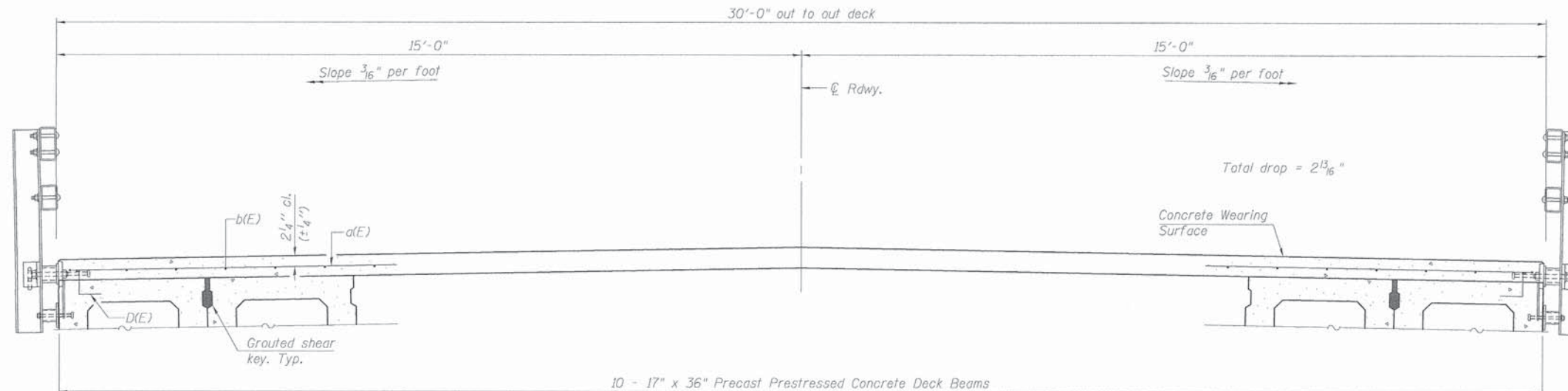
SCALE: SHEET OF SHEETS STA. TO STA.

T.R. RTE.	SECTION	COUNTY	TOTAL SHEETS	SHEET NO.
159A	10-01109-01-BR	DEKALB	18	8
CONTRACT NO. 87585			ILLINOIS FED. AID PROJECT	



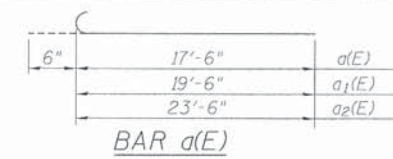


PLAN

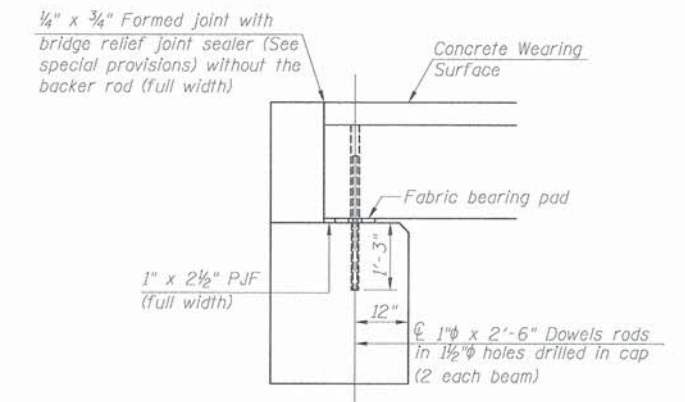


CROSS SECTION

Notes:  
 See sheet 8 of 18 for Superstructure Details and Bill of Material.  
 Bars indicated thus 20 x 2-#4 etc. indicates 20 lines of bars with 2 lengths per line.  
 Spacing of a(E) bars shall be measured along the CL of structure.



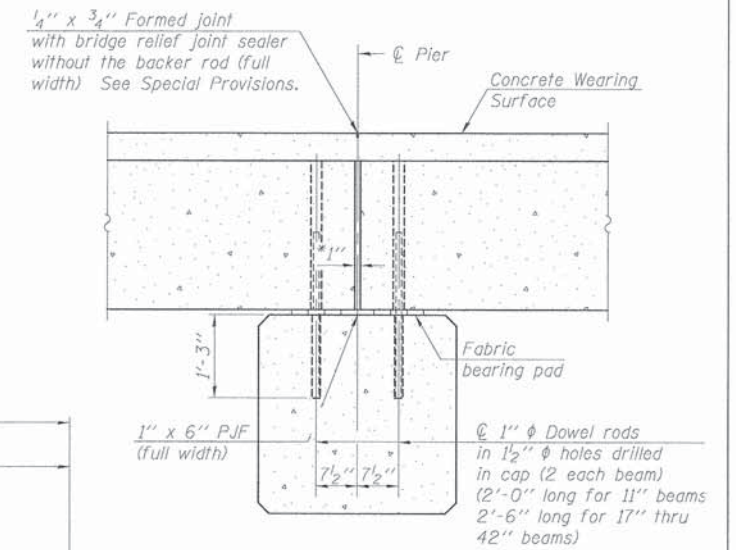
MINIMUM BAR LAP  
 #4 bar = 2'-7"



SECTION A-A

(Dimensions are at Rt. L's)

Notes:  
 All concrete wearing surfaces shall be placed prior to casting a backwall and/or approach slab.  
 See sheet 7 of 18 for fabric bearing pad details.



SECTION B-B

(Dimensions are at Rt. L's)

\*1" Jt. shall be filled with non-shrink grout. 1" dimension may vary to accommodate tolerance in beam lengths.

BILL OF MATERIAL

Bar	No.	Size	Length	Shape	
a(E)	198	#4	18'-0"		
a1(E)	60	#4	20'-0"		
a2(E)	56	#4	24'-0"		
b(E)	120	#4	34'-0"		
Concrete Wearing Surface, 5 inch				Sq.Yd.	428
Bridge Deck Grooving				Sq.Yd.	410
Reinforcement Bars Epoxy Coated				Pound	6810

PDS-M-R34-L 7-1-10



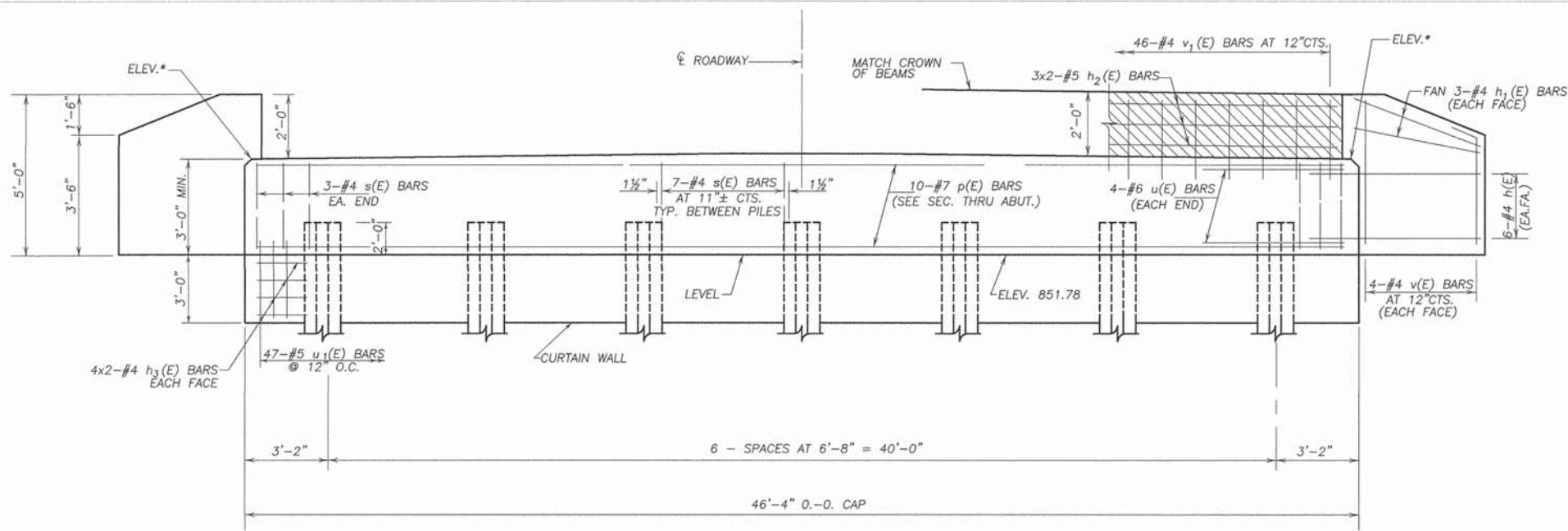
USER NAME = #USER#	DESIGNED -	REVISED -
WES JOB #2130331	DRAWN -	REVISED -
PLOT SCALE = #SCALE#	CHECKED -	REVISED -
PLOT DATE = #DATE#	DATE -	REVISED -

DEKALB COUNTY  
 HIGHWAY DEPARTMENT

SUPERSTRUCTURE  
 STRUCTURE NO. 019-5016

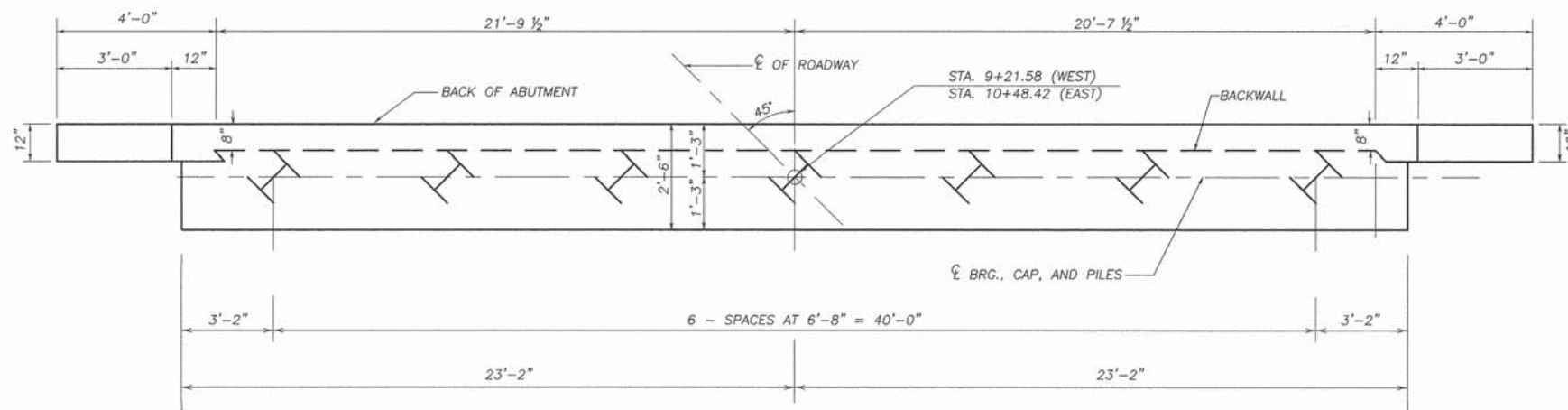
SCALE: SHEET OF SHEETS STA. TO STA.

T.R. RTE.	SECTION	COUNTY	TOTAL SHEETS	SHEET NO.
159A	10-01109-01-BR	DEKALB	18	9
CONTRACT NO. 87585				
ILLINOIS FED. AID PROJECT				

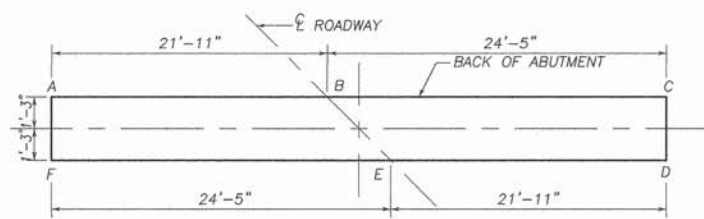


**ELEVATION**

\* FOR CAP ELEVATIONS SEE TABLE BELOW

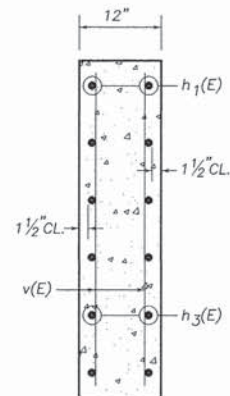


**PLAN**



LOCATION	ELEV.	A	B	C	D	E	F
WEST ABUT.		854.81	855.05	854.78	854.81	855.05	854.78
EAST ABUT.		854.81	855.05	854.78	854.81	855.05	854.78

**ELEVATION TOP OF ABUTMENTS**

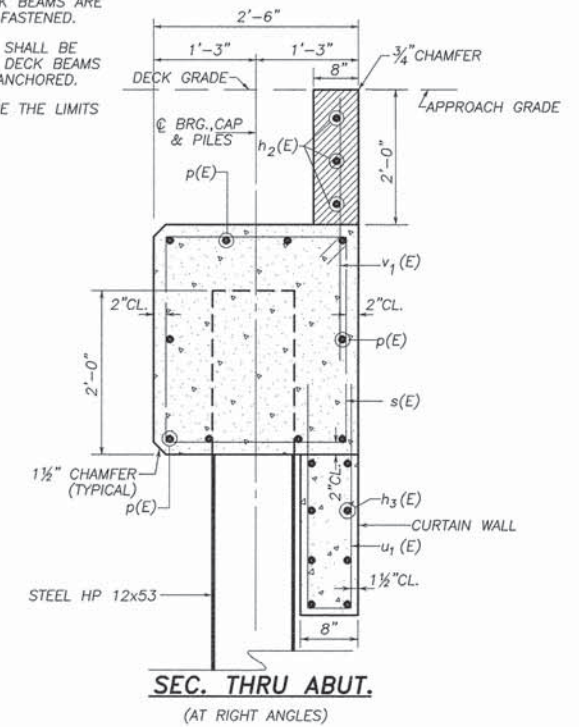


**SECTION THRU WINGWALL**

**PILE DATA INFORMATION**

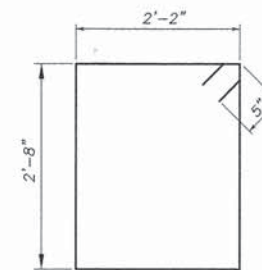
TYPE AND SIZE: STEEL HP 12x53  
 NOMINAL REQUIRED BEARING: 192 KIPS  
 ALLOWABLE RESISTANCE AVAILABLE: 64 KIPS  
 NO. REQUIRED : 13+1 TEST PILE AT E. ABUT.  
 EST. LENGTH: 50' - W. ABUT. ; 44' - E. ABUT.  
 MIN. PENETRATION 15' BELOW STREAMBED  
 THE TEST PILES SHALL BE DRIVEN TO 110 PERCENT OF THE NOMINAL REQUIRED BEARING INDICATED IN THE PILE DATA INFORMATION.

NOTE: WINGWALLS ABOVE TOP OF CAP SHALL NOT BE POURED UNTIL THE DECK BEAMS ARE IN PLACE AND FASTENED.  
 HATCHED AREA SHALL BE POURED AFTER DECK BEAMS ARE SET AND ANCHORED.  
 WIDTH SHALL BE THE LIMITS OF THE CAP.

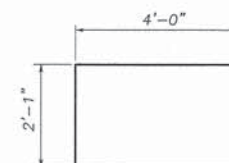


**SEC. THRU ABUT.**

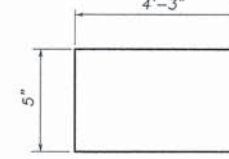
(AT RIGHT ANGLES)



**BAR s (E)**



**BAR u (E)**



**BAR u1(E)**

BAR	NO.	SIZE	LENGTH	SHAPE
h (E)	48	# 4	6' - 0"	—
h 1 (E)	24	# 4	3' - "	—
h 2 (E)	12	# 5	24' - 6"	—
h 3 (E)	32	# 4	24' - 3"	—
p (E)	20	# 7	46' - 0"	—
s (E)	96	# 4	10' - 6"	□
u (E)	16	# 6	10' - 1"	□
u 1 (E)	94	# 5	8' - 11"	□
v (E)	32	# 4	4' - 9"	—
v 1 (E)	92	# 4	4' - 0"	—
ITEM		UNIT	QUANTITY	
Reinforcement Bars, Epoxy Coated		Pound	5,090	
Concrete Structures		Cu.Yd.	37.5	
Furnishing Steel Piles HP12x53		Foot	614	
Driving Piles		Foot	614	
Test Pile, Steel HP12x53		Each	1	
Structure Excavation		Cu.Yd.	182	

**S.N. 019-5016**  
**SUBSTRUCTURE-ABUTMENTS**  
**SECTION 10-01109-01-BR**  
**KESLINGER ROAD**  
**DEKALB COUNTY**



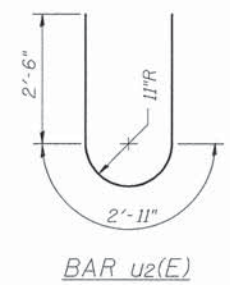
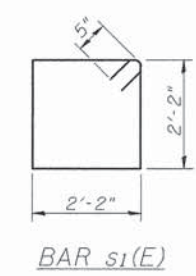
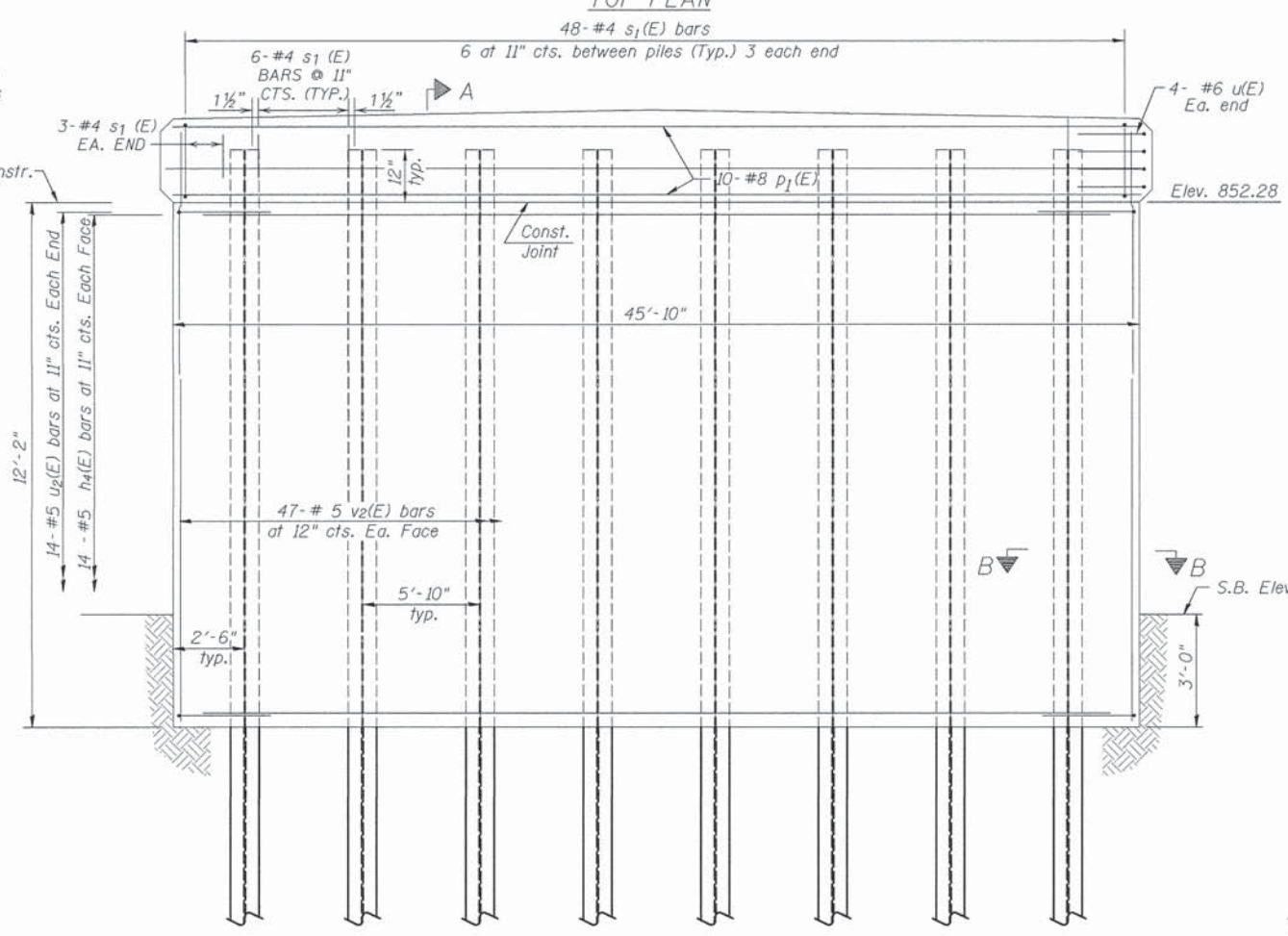
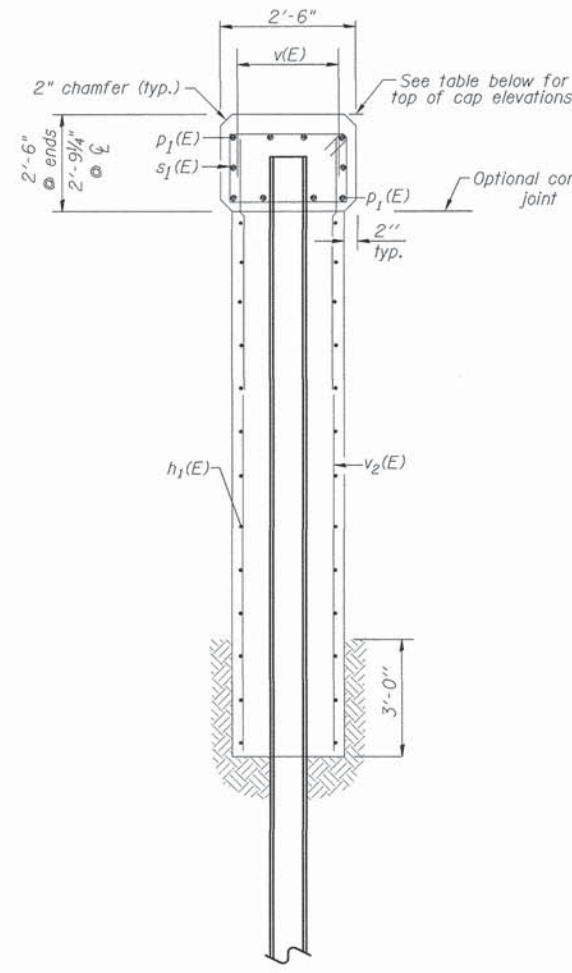
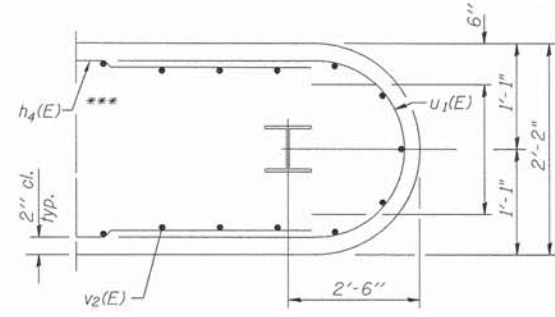
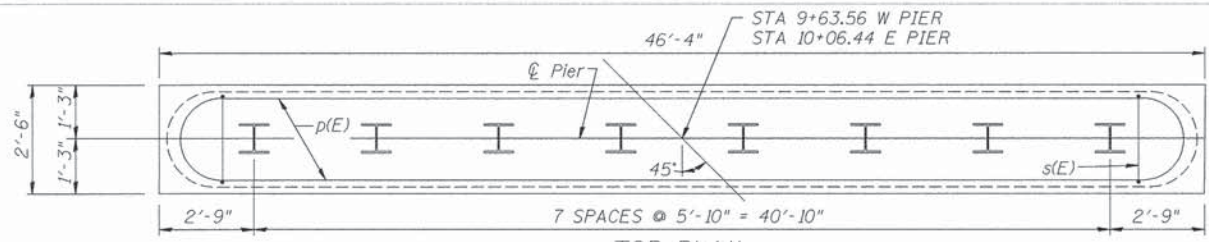
USER NAME : #USER#	DESIGNED - SB	REVISED - 03/26/2014
WES JOB # : 2138331	DRAWN - DJV	REVISED -
PLOT SCALE : #SCALE#	CHECKED -	REVISED -
PLOT DATE : #DATE#	DATE - 2/25/2014	REVISED -

**DEKALB COUNTY**  
**HIGHWAY DEPARTMENT**

**SUBSTRUCTURE - ABUTMENTS**  
**S.N. 019-5016**

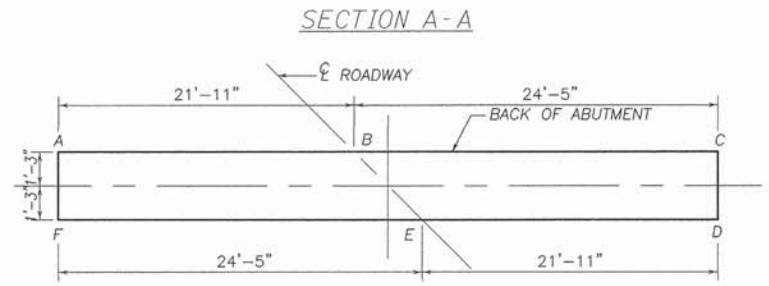
SHEET - OF - SHEETS STA. 9+85

F.A.P. RTE.	SECTION	COUNTY	TOTAL SHEETS	SHEET NO.
	10-01109-01-BR	DEKALB	18	10
CONTRACT NO. 87585			ILLINOIS FED. AID PROJECT	



**BILL OF MATERIAL - 2 PIERS**

BAR	NO.	SIZE	LENGTH	SHAPE
h 4 (E)	56	# 5	40' - 10"	—
p 1 (E)	20	# 8	46' - 0"	—
s 1 (E)	96	# 4	9' - 6"	□
u (E)	16	# 6	10' - 1"	U
u 1 (E)	56	# 5	7' - 11"	U
v 2 (E)	188	# 5	14' - 0"	—
ITEM	UNIT	QUANTITY		
Reinforcement Bars, Epoxy Coated	Pound	8,910		
Concrete Structures	Cu.Yd.	109.1		
Furnishing Steel Piles HP12x53	Foot	957		
Driving Piles	Foot	957		
Test Pile, Steel HP12x53	Each	1		
Cofferdam (Type 1) (Location -1)	Each	1		
Cofferdam (Type 1) (Location -2)	Each	1		
Cofferdam Excavation	Cu.Yd.	72		



LOCATION	ELEV.	A	B	C	D	E	F
WEST PIER	854.81	855.05	854.78	854.81	855.05	854.78	
EAST PIER	854.81	855.05	854.78	854.81	855.05	854.78	

**ELEVATION TOP OF PIERS**

**PILE DATA INFORMATION**

TYPE AND SIZE: STEEL HP 12x53  
 NOMINAL REQUIRED BEARING: 297 KIPS  
 ALLOWABLE RESISTANCE AVAILABLE: 99 KIPS  
 NO. REQUIRED : 15+1 TEST PILE AT W. PIER  
 EST. LENGTH: 67' - W. PIER ; 61' - E. PIER  
 MIN. PENETRATION 15' BELOW STREAMBED  
 THE TEST PILES SHALL BE DRIVEN TO 110 PERCENT OF THE NOMINAL REQUIRED BEARING INDICATED IN THE PILE DATA INFORMATION.



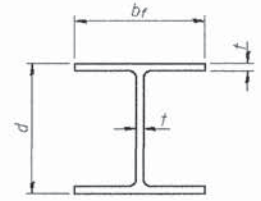
P-DSSW	11-26-12	DESIGNED - SB	REVISED - 03/26/2014
USER NAME = KUSERS	DESIGNED - DJV	REVISED -	
WES JOB # = 2130331	CHECKED -	REVISED -	
PLOT SCALE = ESCALEX	DATE - 2/24/2014	REVISED -	
PLOT DATE = ADATER			

**DEKALB COUNTY  
HIGHWAY DEPARTMENT**

**PIERS  
S.N. 019-5016**

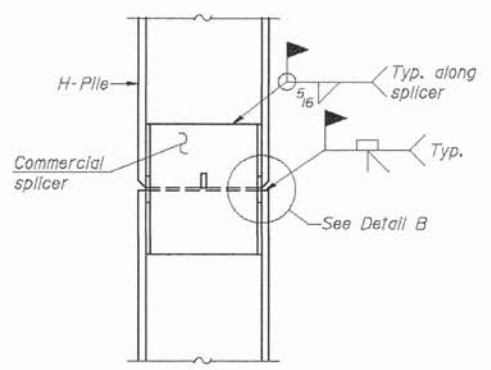
F.A.P. RTE.	SECTION	COUNTY	TOTAL SHEETS	SHEET NO.
-	10-01109-01-BR	DEKALB	18	11
CONTRACT NO. 87585			ILLINOIS FED. AID PROJECT	

SHEET - OF - SHEETS STA. 9+85

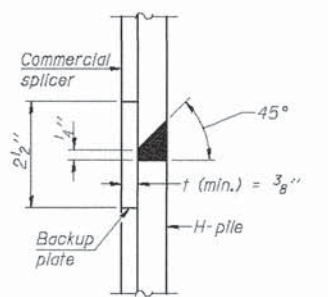


**STEEL PILE TABLE**

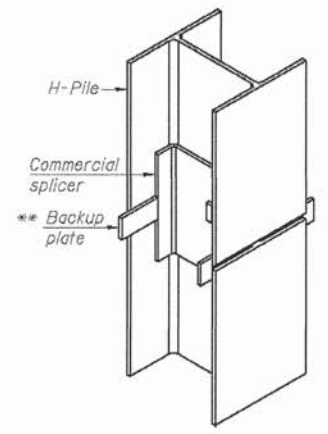
Designation	Depth d	Flange width br	Web and Flange thickness t	Encasement diameter A
HP 14x117	14 1/4"	14 7/8"	1 3/8"	30"
x102	14"	14 3/4"	1 1/8"	30"
x89	13 7/8"	14 3/4"	5/8"	30"
x73	13 5/8"	14 5/8"	1/2"	30"
HP 12x84	12 1/4"	12 1/4"	1 1/8"	24"
x74	12 1/8"	12 1/4"	5/8"	24"
x63	12"	12 1/8"	1/2"	24"
x53	11 3/4"	12"	7/16"	24"
HP 10x57	10"	10 1/4"	9/16"	24"
x42	9 3/4"	10 1/8"	7/16"	24"
HP 8x36	8"	8 1/8"	7/16"	18"



**ELEVATION**

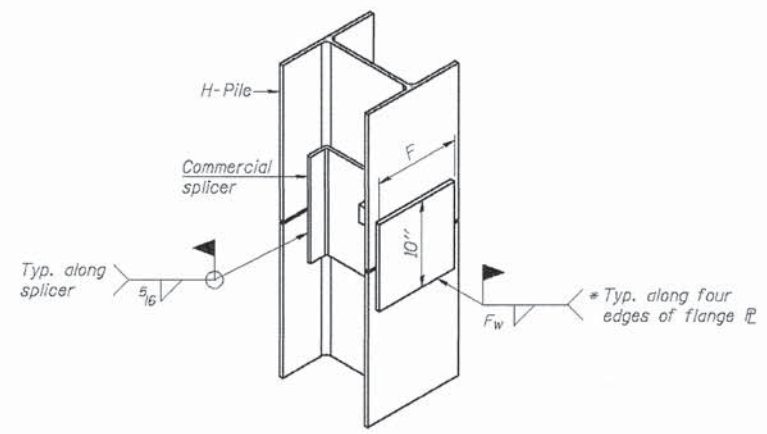


**DETAIL "B"**



**ISOMETRIC VIEW**

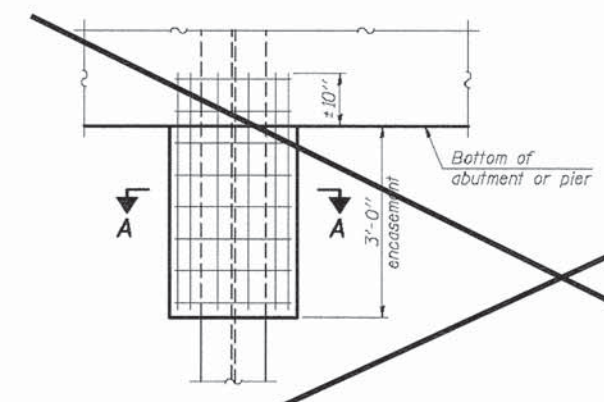
**WELDED COMMERCIAL SPLICE**



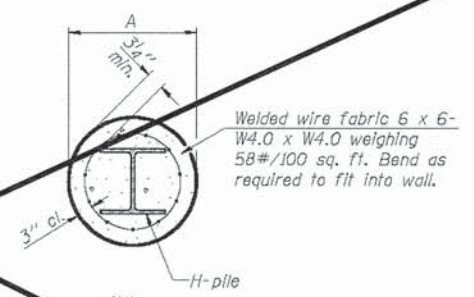
**ISOMETRIC VIEW**

**WELDED COMMERCIAL SPLICE ALTERNATE**

- \* Interrupt welds 1/4" from end of web and/or each flange.
- \*\* Remove portions of backup plates that extend outside the flanges.
- \*\*\* Weld size per pile shoe manufacturer (5/16" min.).



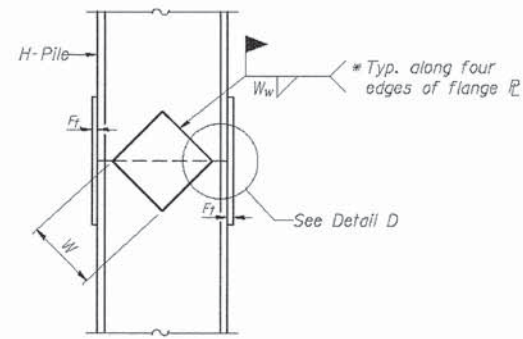
**ELEVATION**



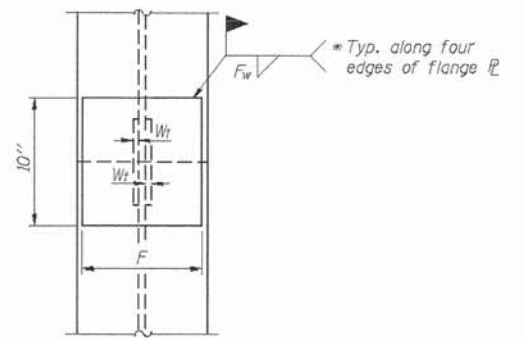
**SECTION A-A**

**PILE ENCASEMENT**

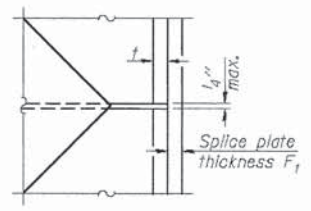
Note: Forms for encasement may be omitted when soil conditions permit.



**ELEVATION**



**END VIEW**



**DETAIL D**

**WELDED PLATE FIELD SPLICE**

Designation	F	F <sub>T</sub>	F <sub>W</sub>	W	W <sub>T</sub>	W <sub>W</sub>
HP 14x117	12 1/2"	1"	7/8"	7 3/4"	5 3/8"	1/2"
x102	12 1/2"	7/8"	3/4"	7 3/4"	5 3/8"	1/2"
x89	12 1/2"	3/4"	11/16"	7 3/4"	5 3/8"	1/2"
x73	12 1/2"	5/8"	9/16"	7 3/4"	5 3/8"	1/2"
HP 12x84	10"	7/8"	11/16"	6 1/2"	5 3/8"	1/2"
x74	10"	7/8"	11/16"	6 1/2"	5 3/8"	1/2"
x63	10"	5/8"	1/2"	6 1/2"	1/2"	3/8"
x53	10"	5/8"	1/2"	6 1/2"	1/2"	3/8"
HP 10x57	8"	3/4"	9/16"	5 1/4"	1/2"	3/8"
x42	8"	5/8"	9/16"	5 1/4"	1/2"	3/8"
HP 8x36	7"	5/8"	7/16"	4 1/4"	1/2"	3/8"

Note: The steel H-piles shall be according to AASHTO M270 Grade 50.

S.N. 019-5016  
 PILING DETAILS  
 SECTION 10-01109-01-BR  
 KESLINGER ROAD  
 DEKALB COUNTY



USER NAME * #USER#	DESIGNED - SB	REVISED -
WES_JOB * # 2138331	DRAWN - DJV	REVISED -
PLOT_SCALE * #SCALE#	CHECKED -	REVISED -
PLOT_DATE * #DATE#	DATE - 2/24/2014	REVISED -

**DEKALB COUNTY  
 HIGHWAY DEPARTMENT**

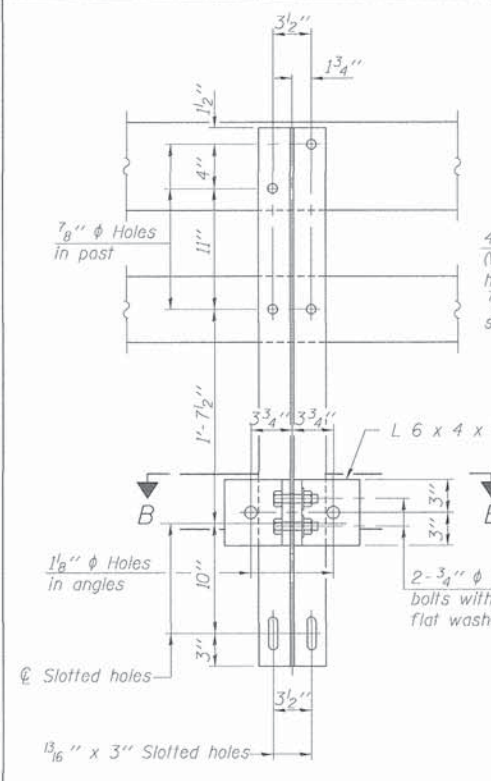
**PILING DETAILS  
 S.N. 019-5016**

F.A.P. RTE.	SECTION	COUNTY	TOTAL SHEETS	SHEET NO.
-	10-01109-01-BR	DEKALB	18	12
			CONTRACT NO. 87585	

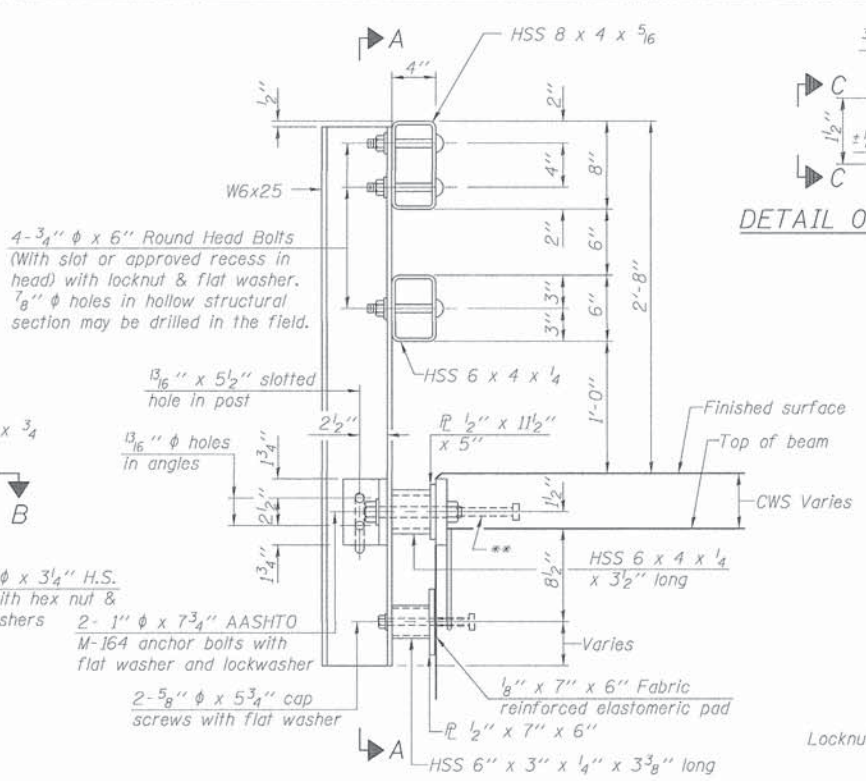
SHEET - OF - SHEETS STA. 9+85

ILLINOIS FED. AID PROJECT

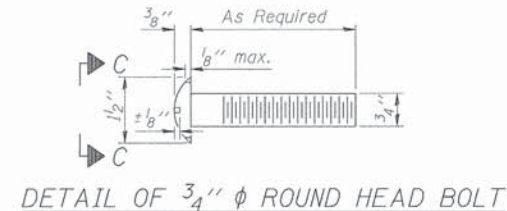
F:\2013\0130331\DWG\VP-PileSheet.dwg, 3/26/2014 4:30:20 PM, 0/1



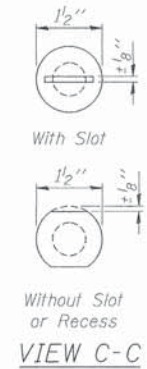
SECTION A-A



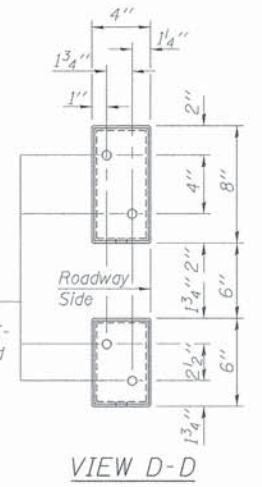
SECTION AT RAIL POST



DETAIL OF 3/4"  $\phi$  ROUND HEAD BOLT

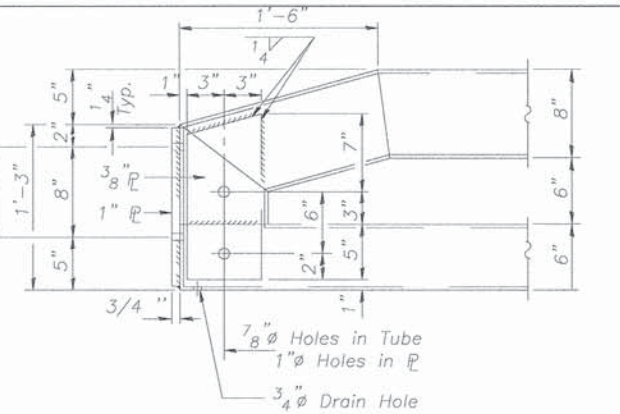


VIEW C-C

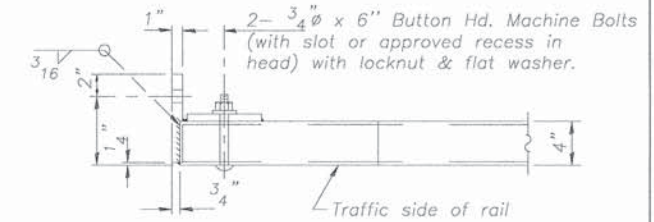


VIEW D-D

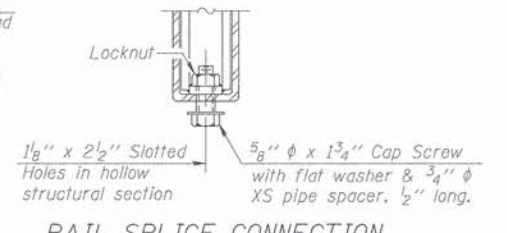
1  $\phi$  Holes for 1"  $\times$  4" Round Head Bolts. Provide 2 flat washers & locknuts for guard rail connection shown on Std. 2340.7



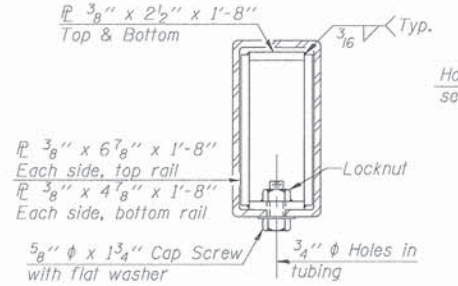
END OF RAIL DETAILS



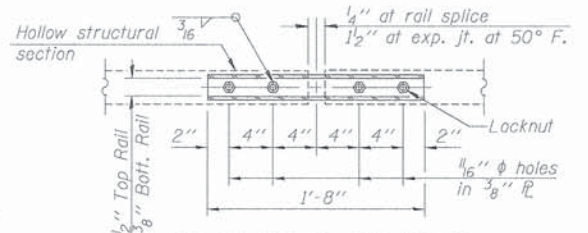
Traffic side of rail



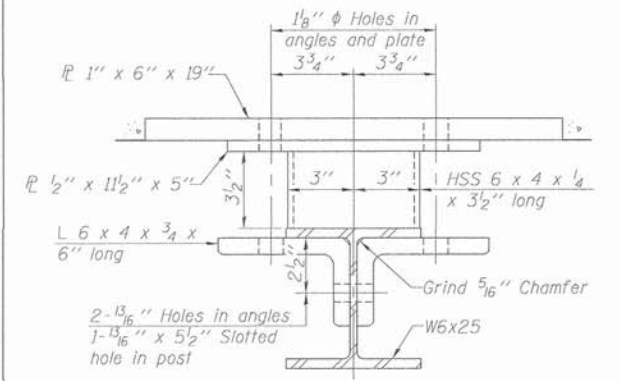
RAIL SPLICE CONNECTION AT EXPANSION JT.



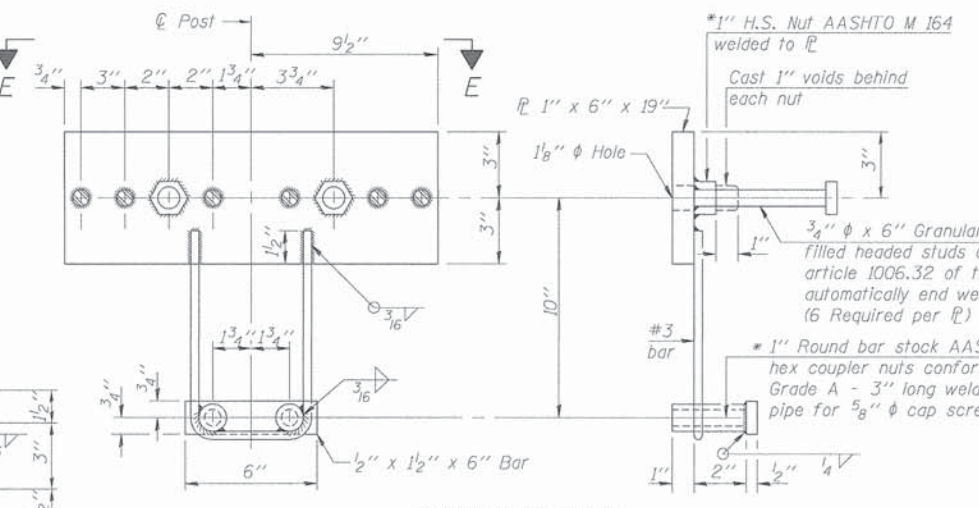
SECTION AT RAIL SPLICE



PLAN-BOTT. SPLICE TYPICAL

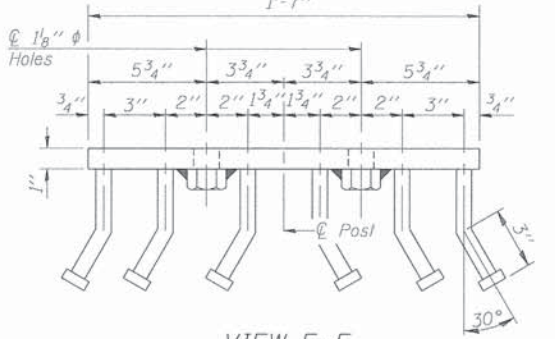


SECTION B-B



ANCHOR DEVICE

\*Threaded areas shall be plugged or blocked off during casting of beam. Galvanized after fabrication.



VIEW E-E

Notes:  
 All field drilled holes shall be coated with an approved zinc rich paint before erection.  
 For multi-span bridges, sufficient 1/4" x 6" x 1'-2" galvanized steel shims shall be provided to align rail between adjacent spans. Cost included with Steel Railing, Type SM.  
 Steel rail elements shall be galvanized according to Article 509.05 of the Standard Specifications.  
 \*\* The studs of the anchor devices shall be placed below the top reinforcement bars and the outermost longitudinal reinforcement bar shall be placed directly above the studs of the rail post anchor device.

BILL OF MATERIAL

Item	Unit	Quantity
Steel Railing, Type SM	Foot	261

R-34CWS 7-1-10 (6'-3" Maximum Post Spacing) (5" minimum to 7/8" maximum CWS thickness)



USER NAME - #USER#	DESIGNED -	REVISED -
WES JOB #2138331	DRAWN -	REVISED -
PLOT SCALE - #SCALE#	CHECKED -	REVISED -
PLOT DATE - #DATE#	DATE -	REVISED -

DEKALB COUNTY HIGHWAY DEPARTMENT

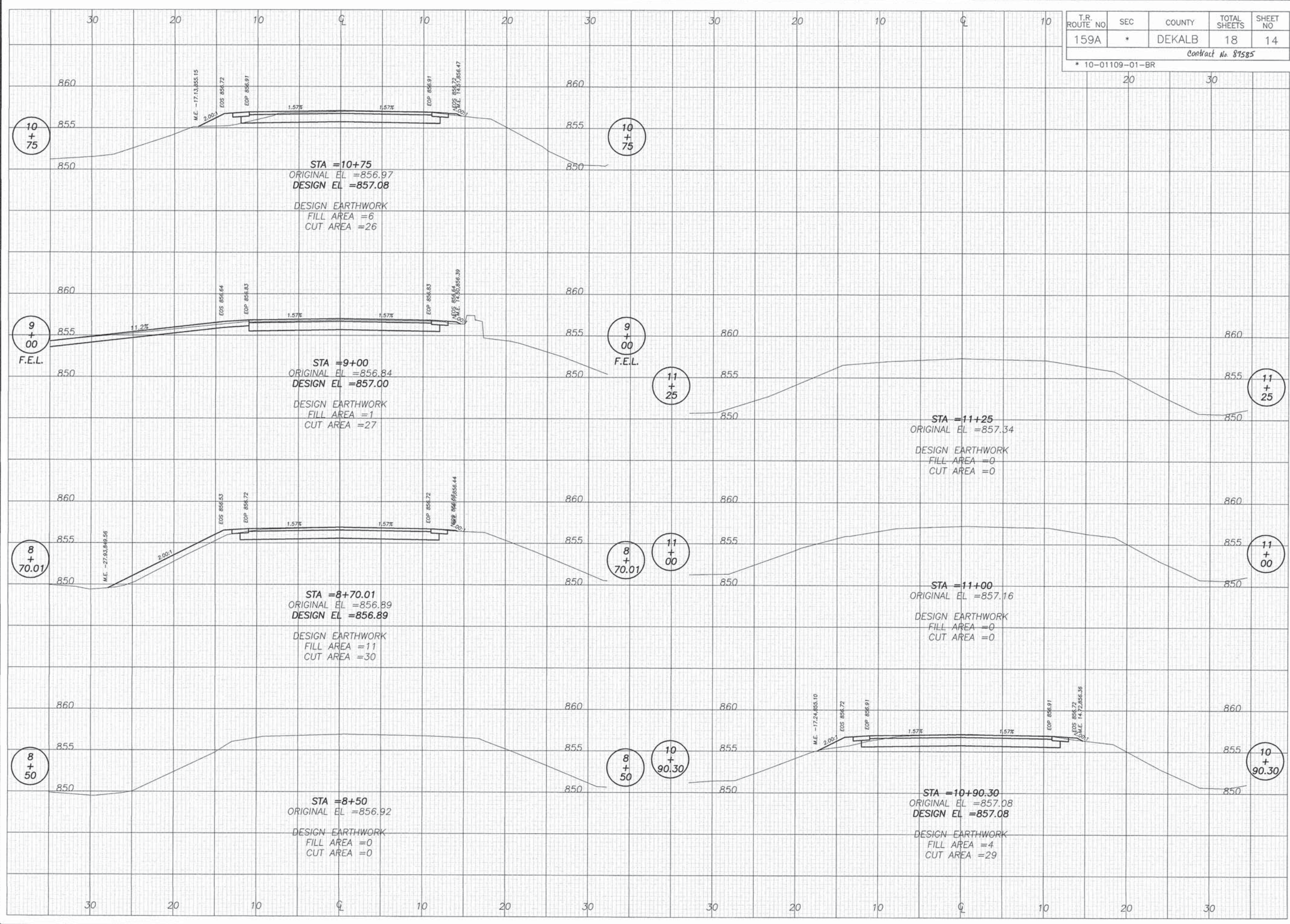
STEEL RAILING, TYPE SM WITH CONCRETE WEARING SURFACE STRUCTURE NO. 019-5016

SCALE: SHEET OF SHEETS STA. TO STA.

T.R. RTE.	SECTION	COUNTY	TOTAL SHEETS	SHEET NO.
159A	10-01109-01-BR	DEKALB	18	13

CONTRACT NO. 87585 ILLINOIS FED. AID PROJECT

T.R. ROUTE NO	SEC	COUNTY	TOTAL SHEETS	SHEET NO
159A	*	DEKALB	18	14
Contract No. 87585				
* 10-01109-01-BR				



REVISIONS	
DATE	REVISION
3/26/14	

DESIGNED BY	SB
DRAWN BY	BEH
CHECKED BY	RCO/1001
DATE PLOTTED BY	
PROJECT NO.	

**wendler**  
 wendler engineering services, inc.  
 GROUND-BREAKING SOLUTIONS  
 highway - surveys - solutions  
 www.wendlergs.com    ph: 815.228.1  
 Illinois Professional Design Firm No. 184-00866

CROSS SECTIONS  
 OF  
 TR. RTE. 159A  
 FOR  
 DEKALB COUNTY HIGHWAY DEPARTMENT

SHEET TITLE  
**CROSS SECTIONS**

JOB NUMBER  
 2130331

DATE  
 02/24/2014

SHEET NO.  
**14 of 18**

F:\2013\pds\2130331\DWG\VE\201001.dwg, 3/26/2014 4:57:05 PM, DW

**Midwest Testing Services, Inc.**  
3705 Progress Blvd.  
Peru, IL 61354

**BORING LOG**  
Sheet 1 of 4

Phone: 815-223-6696  
Fax: 815-223-6659  
e-mail: mts37@comcast.net

Client: Wendler Engineering Services, Inc.  
Project Name: Section 10-01109-01-01-BR Keslinger Road  
Project Site: Afton Twp. 5-SW & 8-NW SN: 019-5010  
DeKalb County, Illinois

Boring No. B-1  
Surface Elev. 100.00  
Auger Depth 66' Rotary Depth NA  
Start Date 01/22/14 Finish Date 01/22/14

Location: 18' East of the back of the East Abutment  
4' North of Centerline

(DEPTH) ELEV.	DESCRIPTION OF MATERIALS	Graphic Log	Depth in feet	SAMPLES						DRILLED BY	REMARKS
				Sample No.	Sample Type	Qu (TSF)	N Value (Blows)	Bulge / Shear	Moisture (%)		
100.00	Asphalt over Aggregate		1							Randy Safranski Diedrich D-120	
99.00			2								
98.00			3	1	SS	1.7	15	B	26		
97.00			4								
96.00			5								
95.00	Stiff Black/Brown Silty Clay Fill		6	2	SS	1.5	14	B	25		
94.00			7								
93.00			8	3	SS	1.0	8	B	28		
92.00			9								
91.00			10								
90.00	Medium Dense Brown Gravely Loam		11	4	SS	---	26	---	18		
89.00			12								
88.00			13								
87.00	Medium Dense Brown Sand & Gravel		14	5	SS	---	28	---	12		
86.00			15								
85.00			16								
84.00			17	6	SS	2.0	15	B	11		
83.00	Very Stiff Pinkish Gray Silty Clay Till		18								
82.00			19	7	SS	2.2	17	B	12		
81.00			20								
80.00				8	SS	2.5	20	B	12		

Groundwater Data: Static water encountered after auger removal at 13.5' Depth.  
Comments: **Assumed Centerline of Roadway opposite B-2 to be elevation 100.0.**

**Midwest Testing Services, Inc.**  
3705 Progress Blvd.  
Peru, IL 61354

**BORING LOG**  
Sheet 2 of 4

Phone: 815-223-6696  
Fax: 815-223-6659  
e-mail: mts37@comcast.net

Client: Wendler Engineering Services, Inc.  
Project Name: Section 10-01109-01-01-BR Keslinger Road  
Project Site: Afton Twp. 5-SW & 8-NW SN: 019-5010  
DeKalb County, Illinois

Boring No. B-1  
Surface Elev. 100.00  
Auger Depth 66' Rotary Depth NA  
Start Date 01/22/14 Finish Date 01/22/14

Location: 18' East of the back of the East Abutment  
4' North of Centerline

(DEPTH) ELEV.	DESCRIPTION OF MATERIALS	Graphic Log	Depth in feet	SAMPLES						DRILLED BY	REMARKS
				Sample No.	Sample Type	Qu (TSF)	N Value (Blows)	Bulge / Shear	Moisture (%)		
79.00			22							Randy Safranski Diedrich D-120	
78.00			23	9	SS	4.5	24	B	11		
77.00			24								
76.00			25								
75.00			26	10	SS	5.0	26	B	11		
74.00			27								
73.00			28								
72.00			29								
71.00			30								
70.00	Very Stiff to Hard Pinkish Gray Silty Clay Till		31	11	SS	3.8	25	B	12		
69.00			32								
68.00			33								
67.00			34								
66.00			35								
65.00			36	12	SS	3.9	27	B	12		
64.00			37								
63.00			38								
62.00			39								
61.00			40								
60.00			41	13	SS	4.2	43	B	11		
59.00											

Groundwater Data: Static water encountered after auger removal at 13.5' Depth.  
Comments: **Assumed Centerline of Roadway opposite B-2 to be elevation 100.0.**



USER NAME = RUSER1	DESIGNED = SB	REVISED = -
WES JOB # = 2130331	DRAWN = DJV	REVISED = -
PLOT SCALE = 1/8"=1'-0"	CHECKED = -	REVISED = -
PLOT DATE = 2/25/2014	DATE = 2/25/2014	REVISED = -

**DEKALB COUNTY  
HIGHWAY DEPARTMENT**

**SOIL BORINGS  
S.N. 019-5016**

SHEET - OF - SHEETS STA. 9+85

F.A.P. RTE.	SECTION	COUNTY	TOTAL SHEETS	SHEET NO.
-	10-01109-01-BR	DEKALB	18	15
CONTRACT NO. 87585			ILLINOIS FED. AID PROJECT	

**Midwest Testing Services, Inc.**  
3705 Progress Blvd.  
Peru, IL 61354

**BORING LOG**  
Sheet 3 of 4

Phone: 815-223-6696  
Fax: 815-223-6659  
e-mail: mts37@comcast.net

Client: Wendler Engineering Services, Inc.  
Project Name: Section 10-01109-01-01-BR Keslinger Road  
Project Site: Afton Twp. 5-SW & 8-NW SN: 019-5010  
DeKalb County, Illinois

Boring No. B-1  
Surface Elev. 100.00  
Auger Depth 66' Rotary Depth NA  
Start Date 01/22/14 Finish Date 01/22/14

Location: 18' East of the back of the East Abutment  
4' North of Centerline

(DEPTH) ELEV.	DESCRIPTION OF MATERIALS	Graphic Log	Depth in feet	SAMPLES						DRILLED BY	REMARKS
				Sample No.	Sample Type	Qu (TSF)	N Value (Blows)	Bulge / Shear	Moisture (%)		
58.00											
57.00			43								
56.00			44								
55.00			45								
54.00			46	14	SS	3.4	32	B	12		
53.00			47								
52.00			48								
51.00	Very Stiff to Hard Pinkish Gray Silty Clay Till		49								
50.00			50	15	SS	3.1	26	B	11		
49.00			51								
48.00			52								
47.00			53								
46.00			54								
45.00			55								
44.00			56	16	SS	3.3	32	B	11		
43.00			57								
42.00			58								
41.00			59								
40.00			60								
39.00			61	17	SS	3.6	33	B	11		
38.00			62								

Groundwater Data: Static water encountered after auger removal at 13.5' Depth.  
Comments: **Assumed Centerline of Roadway opposite B-2 to be elevation 100.0.**

**Midwest Testing Services, Inc.**  
3705 Progress Blvd.  
Peru, IL 61354

**BORING LOG**  
Sheet 4 of 4

Phone: 815-223-6696  
Fax: 815-223-6659  
e-mail: mts37@comcast.net

Client: Wendler Engineering Services, Inc.  
Project Name: Section 10-01109-01-01-BR Keslinger Road  
Project Site: Afton Twp. 5-SW & 8-NW SN: 019-5010  
DeKalb County, Illinois

Boring No. B-1  
Surface Elev. 100.00  
Auger Depth 66' Rotary Depth NA  
Start Date 01/22/14 Finish Date 01/22/14

Location: 18' East of the back of the East Abutment  
4' North of Centerline

(DEPTH) ELEV.	DESCRIPTION OF MATERIALS	Graphic Log	Depth in feet	SAMPLES						DRILLED BY	REMARKS
				Sample No.	Sample Type	Qu (TSF)	N Value (Blows)	Bulge / Shear	Moisture (%)		
37.00											
36.00	Hard Pinkish Gray Silty Clay Till		64								
35.00			65								
34.00			66	18	SS	3.3	32	B	11		
33.00	Boring Terminated		67								
32.00			68								
31.00			69								
30.00			70								
29.00			71								
28.00			72								
27.00			73								
26.00			74								
25.00			75								
24.00			76								
23.00		77									
22.00		78									
21.00		79									
20.00		80									
19.00		81									
18.00		82									
17.00		83									

Groundwater Data: Static water encountered after auger removal at 13.5' Depth.  
Comments: **Assumed Centerline of Roadway opposite B-2 to be elevation 100.0.**



USER NAME: * USER#	DESIGNED: - SB	REVISED: -
WED JOB #: * 2130331	DRAWN: - DJV	REVISED: -
PLOT SCALE: * 1/8"=1'-0"	CHECKED: -	REVISED: -
PLOT DATE: * 02/25/2014	DATE: - 2/25/2014	REVISED: -

**DEKALB COUNTY  
HIGHWAY DEPARTMENT**

**SOIL BORINGS  
S.N. 019-5016**

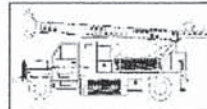
F.A.P. RTE.	SECTION	COUNTY	TOTAL SHEETS	SHEET NO.
-	10-01109-01-BR	DEKALB	18	16
CONTRACT NO. 87585			ILLINOIS FED. AID PROJECT	

SHEET 4 OF 4 SHEETS STA. 9+85

F:\2013\04\21\30331\DWG\BORING.dwg, 3/26/2014 4:58:11 PM, DWG

DWG: 019-5016 - 01





**Midwest Testing Services, Inc.**  
3705 Progress Blvd.  
Peru, IL 61354

**BORING LOG**

Sheet 1 of 4

Phone: 815-223-6696  
Fax: 815-223-6659  
e-mail: mts37@comcast.net

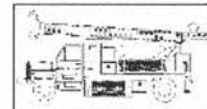
Client: Wendler Engineering Services, Inc.  
Project Name: Section 10-01109-01-01-BR Keslinger Road  
Project Site: Afton Twp. 5-SW & 8-NW SN: 019-5010  
DeKalb County, Illinois

Boring No. B-2  
Surface Elev. 100.00  
Auger Depth 66' Rotary Depth NA  
Start Date 01/22/14 Finish Date 01/22/14

Location: 18' West of the back of the West Abutment  
3' South of Centerline

(DEPTH) ELEV.	DESCRIPTION OF MATERIALS	Graphic Log	Depth in feet	SAMPLES						DRILLED BY	REMARKS
				Sample No.	Sample Type	Qu (TSF)	N Value (Blows)	Bulge / Shear	Moisture (%)		
100.00	Asphalt over Aggregate		1							Randy Safranski Diedrich D-120	
99.00			2								
98.00			3	1	SS	2.1	18	B	22		
97.00			4								
96.00			5								
95.00	Stiff Black/Brown Silty Clay Fill with Concrete & Debris		6	2	SS	1.6	11	B	24		
94.00			7								
93.00			8	3	SS	---	8	---	19		
92.00			9								
91.00	Loose Black/Brown Sandy Loam Fill		10	4	SS	---	9	---	18		
90.00			11								
89.00			12								
88.00			13	5	SS	2.6	15	B	14		
87.00			14								
86.00			15								
85.00			16	6	SS	2.8	15	B	12		
84.00			17								
83.00	Very Stiff Pinkish Gray Silty Clay Till		18	7	SS	3.8	18	B	11		
82.00			19								
81.00			20	8	SS	3.9	20	B	11		
80.00											

Groundwater Data: No groundwater encountered at time of subsurface investigation.  
Comments: **Assumed Centerline of Roadway opposite B-2 to be elevation 100.0.**



**Midwest Testing Services, Inc.**  
3705 Progress Blvd.  
Peru, IL 61354

**BORING LOG**

Sheet 2 of 4

Phone: 815-223-6696  
Fax: 815-223-6659  
e-mail: mts37@comcast.net

Client: Wendler Engineering Services, Inc.  
Project Name: Section 10-01109-01-01-BR Keslinger Road  
Project Site: Afton Twp. 5-SW & 8-NW SN: 019-5010  
DeKalb County, Illinois

Boring No. B-2  
Surface Elev. 100.00  
Auger Depth 66' Rotary Depth NA  
Start Date 01/22/14 Finish Date 01/22/14

Location: 18' West of the back of the West Abutment  
3' South of Centerline

(DEPTH) ELEV.	DESCRIPTION OF MATERIALS	Graphic Log	Depth in feet	SAMPLES						DRILLED BY	REMARKS
				Sample No.	Sample Type	Qu (TSF)	N Value (Blows)	Bulge / Shear	Moisture (%)		
79.00			22							Randy Safranski Diedrich D-120	
78.00			23	9	SS	4.4	22	B	10		
77.00			24								
76.00			25								
75.00	Very Stiff to Hard Pinkish Gray Silty Clay Till		26	10	SS	4.5	26	B	10		
74.00			27								
73.00			28								
72.00			29								
71.00			30								
70.00			31	11	SS	3.9	20	B	12		
69.00			32								
68.00			33								
67.00			34								
66.00			35								
65.00			36	12	SS	4.2	24	B	12		
64.00			37								
63.00			38								
62.00			39								
61.00			40								
60.00			41	13	SS	4.5	25	B	12		
59.00											

Groundwater Data: No groundwater encountered at time of subsurface investigation.  
Comments: **Assumed Centerline of Roadway opposite B-2 to be elevation 100.0.**



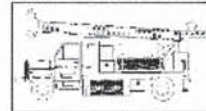
USER NAME : #USER#	DESIGNED : SB	REVISED : -
WES JOB # : 2130331	DRAWN : DJV	REVISED : -
PLOT SCALE : #SCALE#	CHECKED : -	REVISED : -
PLOT DATE : #DATE#	DATE : 2/25/2014	REVISED : -

**DEKALB COUNTY  
HIGHWAY DEPARTMENT**

**SOIL BORINGS  
S.N. 019-5016**

F.A.P. RTE.	SECTION	COUNTY	TOTAL SHEETS	SHEET NO.
-	10-01109-01-BR	DEKALB	18	17
CONTRACT NO. 87585			ILLINOIS FED. AID PROJECT	

SHEET - OF - SHEETS STA. 9+85



**Midwest Testing Services, Inc.**  
3705 Progress Blvd.  
Peru, IL 61354

**BORING LOG**

Sheet 3 of 4

Phone: 815-223-6696  
Fax: 815-223-6659  
e-mail: mts37@comcast.net

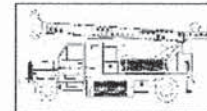
Client: Wendler Engineering Services, Inc.  
Project Name: Section 10-01109-01-01-BR Keslinger Road  
Project Site: Afton Twp. 5-SW & 8-NW SN: 019-5010  
DeKalb County, Illinois

Boring No. B-2  
Surface Elev. 100.00  
Auger Depth 66' Rotary Depth NA  
Start Date 01/22/14 Finish Date 01/22/14

Location: 18' West of the back of the West Abutment  
3' South of Centerline

(DEPTH) ELEV.	DESCRIPTION OF MATERIALS	Graphic Log	Depth in feet	SAMPLES						DRILLED BY	REMARKS
				Sample No.	Sample Type	Qu (TSF)	N Value (Blows)	Bulge / Shear	Moisture (%)		
58.00											
57.00			43								
56.00			44								
55.00			45								
54.00			46	14	SS	3.6	28	B	13		
53.00			47								
52.00			48								
51.00	Very Stiff to Hard Pinkish Gray Silty Clay Till		49								
50.00			50	15	SS	3.2	26	B	12		
49.00			51								
48.00			52								
47.00			53								
46.00			54								
45.00			55	16	SS	3.3	30	B	12		
44.00			56								
43.00			57								
42.00			58								
41.00			59								
40.00			60								
39.00			61	17	SS	3.8	31	B	11		
38.00			62								

Groundwater Data: No groundwater encountered at time of subsurface investigation.  
Comments: **Assumed Centerline of Roadway opposite B-2 to be elevation 100.0.**



**Midwest Testing Services, Inc.**  
3705 Progress Blvd.  
Peru, IL 61354

**BORING LOG**

Sheet 4 of 4

Phone: 815-223-6696  
Fax: 815-223-6659  
e-mail: mts37@comcast.net

Client: Wendler Engineering Services, Inc.  
Project Name: Section 10-01109-01-01-BR Keslinger Road  
Project Site: Afton Twp. 5-SW & 8-NW SN: 019-5010  
DeKalb County, Illinois

Boring No. B-2  
Surface Elev. 100.00  
Auger Depth 66' Rotary Depth NA  
Start Date 01/22/14 Finish Date 01/22/14

Location: 18' West of the back of the West Abutment  
3' South of Centerline

(DEPTH) ELEV.	DESCRIPTION OF MATERIALS	Graphic Log	Depth in feet	SAMPLES						DRILLED BY	REMARKS
				Sample No.	Sample Type	Qu (TSF)	N Value (Blows)	Bulge / Shear	Moisture (%)		
37.00											
36.00	Hard Pinkish Gray Silty Clay Till		64								
35.00			65	18	SS	4.0	33	B	11		
34.00			66								
33.00			67								
32.00			68								
31.00			69								
30.00			70								
29.00			71								
28.00			72								
27.00			73								
26.00			74								
25.00			75								
24.00			76								
23.00			77								
22.00			78								
21.00			79								
20.00			80								
19.00			81								
18.00			82								
17.00			83								

Groundwater Data: No groundwater encountered at time of subsurface investigation.  
Comments: **Assumed Centerline of Roadway opposite B-2 to be elevation 100.0.**



USER NAME * #USER#	DESIGNED - SB	REVISED - -
WES JOB * # 2130331	DRAWN - DJV	REVISED - -
PLOT SCALE * #SCALE#	CHECKED - -	REVISED - -
PLOT DATE * #DATE#	DATE - 2/25/2014	REVISED - -

**DEKALB COUNTY  
HIGHWAY DEPARTMENT**

**SOIL BORINGS  
S.N. 019-5016**

F.A.P. RTE.	SECTION	COUNTY	TOTAL SHEETS	SHEET NO.
-	10-01109-01-BR	DEKALB	18	18
CONTRACT NO. 87585			[ILLINOIS] FED. AID PROJECT	

SHEET - OF - SHEETS STA. 9+85