

STATE OF ILLINOIS  
DEPARTMENT OF TRANSPORTATION  
DIVISION OF HIGHWAYS

F.A.P. RTE.	SECTION	COUNTY	TOTAL SHEETS	SHEET NO.
806	12-00293-00-SP	CHAMPAIGN	20	1
		ILLINOIS	CONTRACT NO. 91486	

INDEX OF SHEETS

SHEET NO.	DESCRIPTION
1	TITLE SHEET
2	GENERAL NOTES
3	HIGHWAY STANDARDS AND LEGEND
4	SUMMARY OF QUANTITIES
5	EXISTING TYPICAL SECTIONS
6	PROPOSED TYPICAL SECTIONS
7	HORIZONTAL ALIGNMENT LAYOUT AND CONTROL
8-9	REMOVAL PLANS
10-11	ROADWAY PLANS
12	TRAFFIC CONTROL PLAN
13-15	PAVEMENT MARKING AND SIGNING PLANS
16-20	MISCELLANEOUS DETAILS

**PLANS FOR PROPOSED STREET IMPROVEMENTS**

CITY OF CHAMPAIGN, CHAMPAIGN COUNTY, ILLINOIS

SECTION NO. 12-00293-00-SP

JOB NO. C-95-310-13

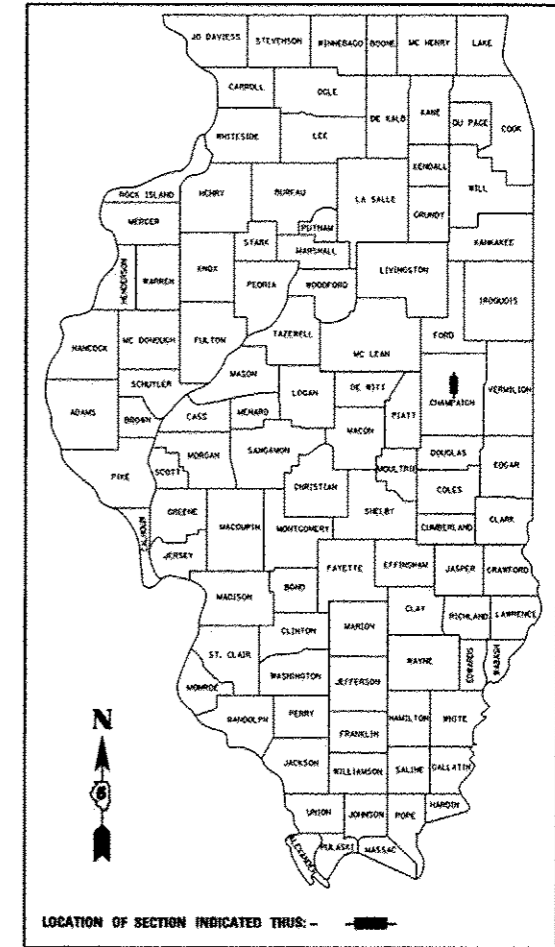
PROJECT NO. SRTS-4009(291)

SAFE ROUTES TO SCHOOL PROJECT

**NEIL STREET-F.A.P. ROUTE 806 AND EUREKA STREET**

FAP ROUTE 806 (NEIL STREET)  
PRINCIPAL ARTERIAL

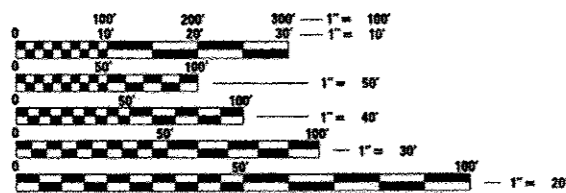
ADT: 10600-15100 (2013)



ILLINOIS HIGHWAY STANDARD DRAWINGS  
(SEE SHEET NO. 3)

SCALES

PLAN	1 INCH = 20 FEET
PROFILE HORIZ.	1 INCH = 20 FEET
PROFILE VERT.	1 INCH = 5 FEET
CROSS SECTIONS HORIZ.	1 INCH = 10 FEET
CROSS SECTIONS VERT.	1 INCH = 5 FEET



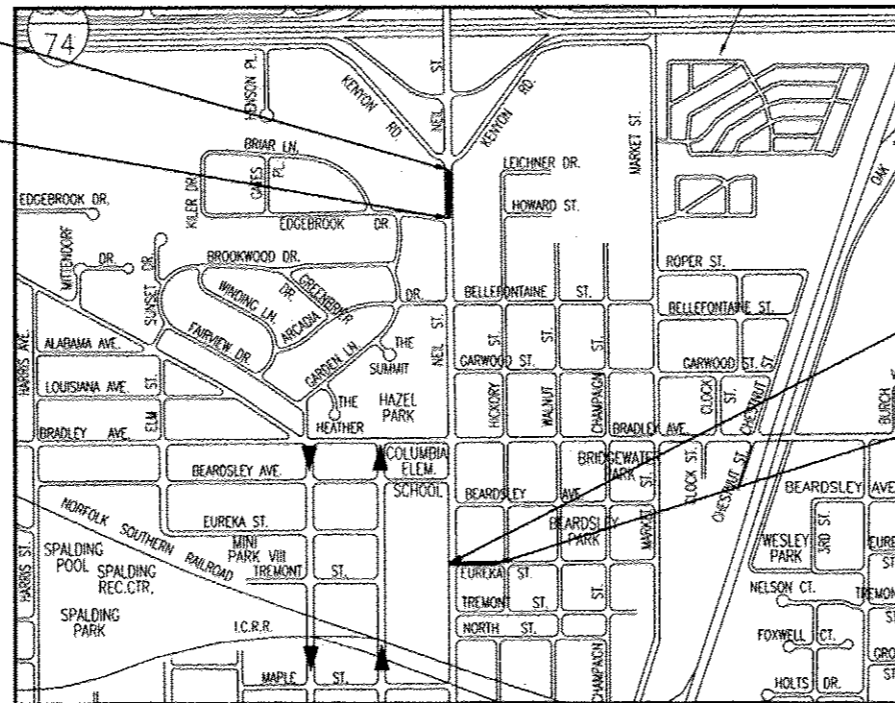
FULL SIZE PLANS HAVE BEEN PREPARED USING STANDARD ENGINEERING SCALES. REDUCED SIZED PLANS WILL NOT CONFORM TO STANDARD SCALES. IN MAKING MEASUREMENTS ON REDUCED PLANS, THE ABOVE SCALES MAY BE USED.

J.U.L.I.E.  
JOINT UTILITY LOCATION INFORMATION FOR EXCAVATION  
1-800-892-0123 OR 811

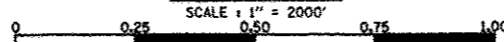
CONTRACT NO. 91486

END IMPROVEMENTS  
NEIL STREET  
STA. 227+13.90

BEGIN IMPROVEMENTS  
NEIL STREET  
STA. 224+30.00



LOCATION MAP



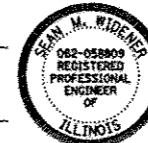
TOTAL LENGTH OF NEIL ST. IMPROVEMENTS	= 283.90 FEET	= 0.05 MILES
TOTAL LENGTH OF EUREKA ST. IMPROVEMENTS	= 290.70 FEET	= 0.06 MILES
TOTAL LENGTH OF IMPROVEMENTS	= 574.60 FEET	= 0.11 MILES

BEGIN IMPROVEMENTS  
EUREKA STREET  
STA. 100+24.00

END IMPROVEMENTS  
EUREKA STREET  
STA. 103+14.70

DATE: 3-10-2014  
PROFESSIONAL ENGINEER  
CLARK DIETZ, INC.  
SHEETS 1-17, 20  
LICENSE EXPIRES 11-30-15

DATE: 3-10-2014  
PROFESSIONAL ENGINEER  
CLARK DIETZ, INC.  
SHEETS 18-19  
LICENSE EXPIRES 11-30-14



CITY OF CHAMPAIGN

APPROVED March 10 20 14  
*David Clark*  
Acting CITY ENGINEER

PASSED 3/18 20 14  
*Scott A. Faly*  
ACTING DISTRICT FIVE ENGINEER OF LOCAL ROADS & STREETS

Releasing For Bid Based on Limited Review  
3-18 20 14  
DEPUTY DIRECTOR OF HIGHWAYS,  
REGION THREE ENGINEER  
STATE OF ILLINOIS  
DEPARTMENT OF TRANSPORTATION

PRINTED BY THE AUTHORITY OF THE STATE OF ILLINOIS

**Clark Dietz**  
ENGINEERS

125 WEST CHURCH STREET  
CHAMPAIGN, IL 61820  
PHONE : 217.379.8000  
FAX : 217.379.8923

# GENERAL NOTES

- ALL ELEVATIONS SHOWN ARE REFERRED TO THE N.A.V.D. 88 DATUM.
- WHEREVER IN THE PLANS OR SPECIFICATIONS THE TERM "STANDARD SPECIFICATIONS" IS USED IT SHALL BE UNDERSTOOD BY THE CONTRACTOR TO MEAN THE "STANDARD SPECIFICATIONS FOR ROAD AND BRIDGE CONSTRUCTION" AS PREPARED BY THE DEPARTMENT OF TRANSPORTATION OF THE STATE OF ILLINOIS NO ADOPTED ON JANUARY 1, 2012.
- WHEREVER IN THE PLANS OR SPECIFICATIONS THE TERM "STANDARD SPECIFICATIONS FOR WATER MAIN AND SEWER CONSTRUCTION" IS USED IT SHALL BE UNDERSTOOD BY THE CONTRACTOR TO MEAN THE "STANDARD SPECIFICATIONS FOR WATER AND SEWER MAIN CONSTRUCTION IN ILLINOIS" AS PREPARED BY I.S.P.E., A.G.C.I., I.M.L., AND U.C.A., ADOPTED JULY 2009.
- ANY REFERENCE TO STANDARDS THROUGHOUT THE PLANS SHALL BE INTERPRETED TO BE THE LATEST STANDARDS OF THE DEPARTMENT AS SHOWN ON THE HIGHWAY STANDARDS AND LEGEND SHEET NO. 3.
- IT IS THE CONTRACTOR'S RESPONSIBILITY TO ASCERTAIN EXISTING FIELD CONDITIONS BEFORE BIDDING ON THE PROJECT.
- THE CONTRACTOR WILL BE REQUIRED TO COMPLY WITH STATE REGULATIONS REGARDING AIR, WATER, AND NOISE POLLUTION.
- THE CONTRACTOR SHALL TAKE CARE NOT TO STORE OR DISPOSE OF DEBRIS OR UNSUITABLE MATERIALS WITHIN LIMITS OF THE IMPROVEMENT AND TAKE CARE TO LIMIT CONSTRUCTION TO WITHIN THE RIGHT-OF-WAY AND EASEMENT AREAS. UNNECESSARY ENCROACHMENTS ONTO PRIVATE OR PUBLIC AREAS WILL NOT BE ALLOWED.
- WHERE SECTION OR SUBSECTION MONUMENTS, BENCHMARKS, OR IRON PIPE MONUMENTS ARE ENCOUNTERED, THE ENGINEER SHALL BE NOTIFIED BEFORE SUCH MONUMENTS ARE REMOVED. THE CONTRACTOR SHALL PROTECT AND CAREFULLY PRESERVE ALL MONUMENTS UNTIL AN ILLINOIS REGISTERED LAND SURVEYOR OR AGENT HAS WITNESSED OR OTHERWISE REFERENCED THEIR LOCATION. THE CONTRACTOR WILL BE RESPONSIBLE FOR HAVING AN ILLINOIS REGISTERED LAND SURVEYOR RE-ESTABLISH ANY MONUMENTS UNNECESSARILY DESTROYED BY HIS OPERATIONS.
- ALL STREET RETURNS HAVE RADII DESIGNATED TO THE BACK OF CURB UNLESS OTHERWISE NOTED ON THE PLANS.
- THE EXCAVATION FOR THIS PROJECT IS CLASSIFIED AS EARTH EXCAVATION IN ACCORDANCE WITH SECTION 202 OF THE STANDARD SPECIFICATIONS. THE EARTH EXCAVATION SHALL INCLUDE THE REMOVAL OF EARTH AND UNCLASSIFIED MATERIALS, AND THE TRANSPORTATION AND PLACEMENT OF SUITABLE MATERIALS IN EMBANKMENTS. THE REMAINING EXCAVATION IS CLASSIFIED AS PAVEMENT REMOVAL, CURB AND GUTTER REMOVAL, DRIVEWAY PAVEMENT REMOVAL AND SIDEWALK REMOVAL.
- ALL EXISTING STUMPS WHICH LIE WITHIN RIGHT-OF-WAY LIMITS SHALL BE REMOVED AS DIRECTED BY THE ENGINEER. ALL STUMPS REMOVED SHALL BE CLASSIFIED AND PAID FOR AS TREE REMOVAL.
- TREES TO BE REMOVED: THE INDICATED TREES (INCLUDING STUMPS) TO BE REMOVED SHALL BE SUITABLY MARKED BY THE ENGINEER BEFORE TREE REMOVAL OPERATIONS BEGIN. ALL TREES, STUMPS AND ROOTS SHALL BE COMPLETELY REMOVED AND DISPOSED OF. [THIS WORK SHALL BE INCLUDED IN THE COST OF THE TREE REMOVAL AND NO ADDITIONAL COMPENSATION WILL BE ALLOWED.]
- TREES TO BE SAVED: PARTICULAR EFFORT SHALL BE MADE TO SAVE ALL DESIRABLE EXISTING TREES OR SHRUBS. ONLY A MINIMUM OF GRADING WILL BE PERMITTED AROUND TREES AS DETERMINED BY THE ENGINEER. THE CONTRACTOR WILL ALSO BE RESPONSIBLE FOR AVOIDING CONFLICTS BETWEEN OVERHEAD TREE LIMBS AND THE EQUIPMENT USED FOR EXCAVATING. THE CONTRACTOR WILL BE HELD RESPONSIBLE FOR UNNECESSARY DAMAGE TO TREES, SHRUBS, OR LANDSCAPING INTENDED TO BE SAVED.
- THE FINISHED EARTHWORK SHALL HAVE VEGETATIVE SUSTAINING TOPSOIL COVERING THE TOP 6 INCHES IN AREAS TO BE SODDED. THE TOPSOIL REQUIRED WILL BE PAID FOR PER SQUARE YARD FOR TOPSOIL FURNISH AND PLACE, 6".
- ONLY EXISTING PAVEMENT, BASE COURSES AND DRIVEWAY PAVEMENTS COMPOSED OF PORTLAND CEMENT CONCRETE, ASPHALT OR BRICK SHALL BE MEASURED AND PAID FOR AS "PAVEMENT REMOVAL" OR "DRIVEWAY PAVEMENT REMOVAL" AS THE CASE MAY BE IN ACCORDANCE WITH SECTION 440 OF THE STANDARD SPECIFICATIONS AND THE SPECIAL PROVISIONS. NO ADDITIONAL COMPENSATION WILL BE ALLOWED FOR PAVEMENT REMOVAL ITEMS DUE TO VARIATIONS IN PAVEMENT TYPES, THICKNESSES OR AMOUNT OF REINFORCEMENT. THE ADJUSTMENT OF QUANTITIES AS SPECIFIED IN ARTICLE 440.07 OF THE STANDARD SPECIFICATIONS SHALL NOT APPLY. REMOVAL OF OTHER TYPES OF PAVEMENT COMPOSITION SUCH AS AGGREGATE OR A MIX OF AGGREGATE/OIL AND CHIP SHALL BE MEASURED AND PAID FOR AS "EARTH EXCAVATION" IN ACCORDANCE WITH SECTION 202 OF THE STANDARD SPECIFICATIONS.
- ALL DISTURBED AREAS SHALL BE SODDED AS SHOWN ON THE PLANS. SODDING SHALL BE DONE AS SOON AS POSSIBLE AS DIRECTED BY THE ENGINEER. EXISTING TURF WHICH IS DAMAGED OUTSIDE THE LIMITS OF THE RIGHT-OF-WAY OR EASEMENTS SHALL BE REESTABLISHED WITH SOD AS DIRECTED BY THE ENGINEER AT THE CONTRACTOR'S EXPENSE.
- THE FOLLOWING RATES OF APPLICATION HAVE BEEN ASSUMED IN CALCULATING PLAN QUANTITIES:  

AGGREGATE MATERIALS	2.05 TON/CU YD
---------------------	----------------
- UTILITY LOCATIONS WERE PLOTTED FROM INFORMATION FURNISHED BY THE VARIOUS UTILITY COMPANIES AND THEIR ACCURACY SHOULD BE CONSIDERED APPROXIMATE. NO RESPONSIBILITY IS ACCEPTED FOR THE LOCATIONS AS SHOWN OR THAT ALL UTILITY FACILITIES ARE SHOWN. UTILITY LOCATIONS SHOWN IN THE PLANS AND PROFILES ARE APPROXIMATE AND REPRESENT LOCATIONS PRIOR TO ANY UTILITY RELOCATIONS REQUIRED TO ACCOMMODATE THE PROPOSED CONSTRUCTION. THE CONTRACTOR IS ADVISED THAT SOME UTILITY COMPANIES MAY HAVE RELOCATED THEIR FACILITIES PRIOR TO THE START OF CONSTRUCTION UNDER THIS CONTRACT. BEFORE COMMENCING CONSTRUCTION OPERATIONS THE CONTRACTOR SHALL OBTAIN FROM THE ENGINEER ANY AVAILABLE INFORMATION REGARDING THE RELOCATED POSITIONS OF UTILITIES WITHIN THE PROJECT LIMITS. WHETHER VARIOUS UTILITIES HAVE BEEN RELOCATED OR REMAIN IN THEIR ORIGINAL LOCATION, IT SHALL BE THE RESPONSIBILITY OF THE CONTRACTOR TO DETERMINE THEIR EXACT LOCATION AT THE TIME OF CONSTRUCTION AND TO PROTECT SAME. THE CONTRACTOR WILL ALSO BE RESPONSIBLE FOR AVOIDING CONFLICTS BETWEEN OVERHEAD UTILITY LINES AND THE EQUIPMENT USED FOR EXCAVATING. SEE "STATUS OF UTILITIES" WITHIN THE SPECIAL PROVISIONS FOR ADDITIONAL INFORMATION REGARDING KNOWN UTILITY RELOCATIONS OR ADJUSTMENTS REQUIRED FOR THE PROPOSED CONSTRUCTION. THE CONTRACTOR'S ATTENTION IS DIRECTED TO THE SPECIAL PROVISIONS ENTITLED "COOPERATION WITH UTILITIES", OR "UTILITY COORDINATION AND CONFLICTS", AND ARTICLE 107.31 OF THE STANDARD SPECIFICATIONS.

19. THE UTILITY COMPANIES MAY BE MAKING ADJUSTMENTS OR RELOCATIONS TO THEIR FACILITIES DURING CONSTRUCTION OF THE ROADWAY IMPROVEMENTS. THE CONTRACTOR WILL BE RESPONSIBLE FOR COORDINATING AND COOPERATING WITH THE UTILITY OWNERS WHILE THEY PERFORM THEIR WORK IN ACCORDANCE WITH ARTICLE 107.31 OF THE STANDARD SPECIFICATIONS. THE CONTRACTOR SHALL NOTIFY THE ENGINEER IMMEDIATELY IF THE UTILITY OWNERS ARE NOT RESPONSIVE TO PERFORMING THEIR WORK IN A TIMELY MANNER. ANY ASSOCIATED COST FOR THESE REQUIREMENTS OR FOR DELAYS IN THE PROJECT WILL NOT BE CONSIDERED FOR PAYMENT AND NO ADDITIONAL COMPENSATION WILL BE ALLOWED.

20. THE CONTRACTOR SHALL BE RESPONSIBLE FOR PROTECTING UTILITY PROPERTY FROM CONSTRUCTION OPERATIONS AS OUTLINED IN ARTICLE 107.31 OF THE STANDARD SPECIFICATIONS. THE JULIE NUMBER IS 800-892-0123. A MINIMUM OF 48 HOURS ADVANCE NOTICE IS REQUIRED.

21. UTILITY OWNERS:

\*INDICATES J.U.L.I.E. MEMBER

*URBANA-CHAMPAIGN SANITARY DISTRICT P.O. BOX 669 URBANA, ILLINOIS 61803 (217) 367-3409	*AMEREN IP (ELECTRICAL DIST./GAS) 1112 ANTHONY DRIVE URBANA, ILLINOIS 61801 (217) 383-7280	*AT&T 201 S. NEIL STREET CHAMPAIGN, ILLINOIS 61820 (217) 398-7990	*UC2B 713 EDGEBROOK DRIVE CHAMPAIGN, ILLINOIS 61820 (217) 366-8222
*ILLINOIS-AMERICAN WATER COMPANY 201 DEVONSHIRE DR. CHAMPAIGN, ILLINOIS 61820 (217) 373-3258	*COMCAST 303 FAIRLAWN DRIVE URBANA, ILLINOIS 61801 (217) 384-2510	*CITY OF CHAMPAIGN 702 EDGEBROOK DRIVE CHAMPAIGN, ILLINOIS 61820 (217) 403-4710	

22. ABANDONED UNDERGROUND UTILITIES THAT CONFLICT WITH CONSTRUCTION SHALL BE REMOVED AND DISPOSED OUTSIDE THE LIMITS OF THE RIGHT OF WAY ACCORDING TO ARTICLE 202.03 OF THE STANDARD SPECIFICATIONS AND AS APPROVED BY THE ENGINEER. [THIS WORK WILL NOT BE PAID FOR SEPARATELY BUT SHALL BE CONSIDERED INCLUDED IN THE CONTRACT UNIT PRICE FOR EARTH EXCAVATION.]

23. THE TOP-OF-FRAME ELEVATIONS REFERRED TO IN THE DRAINAGE STRUCTURE CALL-OUTS FOR A TYPE 3 FRAME AND GRATE PLACED WITHIN TYPE B-6.24 CURB AND GUTTER ARE TAKEN ALONG THE EDGE OF FRAME WHICH IS PARALLEL WITH THE EDGE OF PAVEMENT. THE TYPE 3 AND TYPE 3V FRAME AND GRATES SHALL BE PROVIDED WITH OPEN FACE CURB BOXES AS DESCRIBED IN THE SPECIAL PROVISIONS. SEE THE DRAINAGE STRUCTURE FRAME AND GRATE DETAIL ON THE MISCELLANEOUS DETAIL SHEET.

24. ALL SALVAGEABLE FRAMES AND GRATES WHICH ARE NOT INCORPORATED IN THE WORK SHALL BECOME THE PROPERTY OF THE CONTRACTOR. THE CONTRACTOR'S BID PRICE FOR VARIOUS STORM DRAINAGE WORK SHOULD REFLECT THE SALVAGE VALUE OF THE ITEMS.

25. ALL TRENCHES AND EXCAVATIONS FOR DRAINAGE PIPES, CULVERTS, STRUCTURES, OR STRUCTURE REMOVALS BELOW OR WITHIN TWO FEET LATERALLY OF THE PROPOSED PAVEMENT, SHOULDER, DRIVEWAY PAVEMENT, SIDEWALK OR CURB AND GUTTER SHALL BE BACKFILLED WITH CONTROLLED LOW-STRENGTH MATERIAL (CLSM) AS SHOWN ON THE PLANS AND IN ACCORDANCE WITH THE SPECIAL PROVISIONS. CONTROLLED LOW-STRENGTH MATERIAL SHALL BE USED FOR TRENCH BACKFILL FOR STORM SEWERS, PIPE CULVERTS, DRAINAGE STRUCTURES, AND STRUCTURE REMOVALS. [THE BACKFILLING WITH CONTROLLED LOW-STRENGTH MATERIAL AROUND DRAINAGE STRUCTURES WILL NOT BE MEASURED FOR PAYMENT AND SHALL BE CONSIDERED INCLUDED IN THE CONTRACT UNIT PRICE FOR THE VARIOUS TYPES OF DRAINAGE STRUCTURES.]

26. STORM SEWER, WATER MAIN QUALITY IS TO BE USED AT LOCATIONS WHERE LATERAL SEPARATION BETWEEN THE SEWER AND WATER MAIN IS LESS THAN 10 FEET OR WHERE THE WATER MAIN CROSSES BELOW THE SEWER, REGARDLESS OF VERTICAL SEPARATION OR WHERE THE BOTTOM OF THE WATER MAIN IS LESS THAN 18 INCHES ABOVE THE TOP OF THE SEWER. THE MATERIAL SHALL BE CONCRETE PRESSURE PIPE OR DUCTILE IRON PIPE MEETING THE REQUIREMENTS OF SECTIONS 40-2.01 AND 40-2.02 OF THE STANDARD SPECIFICATIONS FOR WATER AND SEWER MAIN CONSTRUCTION IN ILLINOIS. PVC PIPE WILL NOT BE ALLOWED.

27. WHEN CONNECTIONS ARE TO BE MADE TO EXISTING PIPING AND STRUCTURES, THE LOCATION AND ELEVATION OF THE EXISTING PIPING SHALL BE FIELD VERIFIED AND NOTIFICATION GIVEN TO THE ENGINEER IF THE EXISTING PIPING OR STRUCTURE IS FOUND TO BE DIFFERENT THAN THAT SHOWN ON THE DRAWINGS. WHERE SUCH DISCREPANCY IS FOUND, WORK SHALL NOT PROCEED UNTIL DIRECTED ACCORDINGLY BY THE ENGINEER.

28. WHERE PROPOSED STORM SEWERS ARE TO BE CONNECTED INTO EXISTING MANHOLES OR STORM SEWERS THE CONNECTIONS SHALL BE MADE IN A WORKMANLIKE MANNER AND MASONRY CONSTRUCTED AROUND THEM SO AS TO PREVENT LEAKAGE. CONNECTIONS OF STORM SEWERS TO EXISTING STRUCTURES OR PIPES SHALL BE MADE BY CORE DRILLING HOLES IN THE STRUCTURES. SAW CUTTING HOLES MAY BE ALLOWED WITH THE APPROVAL OF THE ENGINEER.

29. EXISTING STORM SEWERS TO BE REMOVED ON SHALL BE DONE IN ACCORDANCE WITH SECTION 551 OF THE STANDARD SPECIFICATIONS EXCEPT THAT SALVAGING OF THE PIPE WILL NOT BE REQUIRED.

30. EXISTING PAVEMENTS, CURBS AND GUTTERS, AND SIDEWALKS IN WHICH THE TOP SURFACE IS TO BE JOINED TO THE PROPOSED WORK SHALL BE SO JOINED THROUGH SAW CUT JUNCTURES. 3/4" EXPANSION JOINT MATERIAL SHALL BE PLACED AT THESE JUNCTURES AS DIRECTED BY THE ENGINEER.

31. WHERE THE PROPOSED COMBINATION CONCRETE CURB AND GUTTER JOINS THE EXISTING CURB AND GUTTER, A TRANSITION BETWEEN THE TWO CONFIGURATIONS MAY BE REQUIRED. THIS WORK WILL BE CONSIDERED INCLUDED IN THE CONTRACT UNIT PRICE FOR CURB AND GUTTER OF THE SIZE AND TYPE SPECIFIED IN THE PLANS.

32. HORIZONTAL CENTERLINE CONTROL POINTS AND VERTICAL BENCHMARKS ARE SHOWN FOR THE CONTRACTOR TO PHYSICALLY LOCATE MONUMENTATION IN THE FIELD. IT IS THE CONTRACTOR'S RESPONSIBILITY TO MAINTAIN CENTERLINE CONTROL POINTS OR BENCHMARKS AND SET ADDITIONAL POINTS AND TIES AS NECESSARY TO INSURE THAT CONTROL POINTS AND BENCHMARKS CAN BE ACCURATELY REPLICATED DURING CONSTRUCTION.

33. THE CITY OF CHAMPAIGN SHALL BE RESPONSIBLE FOR NOTIFYING THE PUBLIC, MASS TRANSIT DISTRICT, THE UNITED STATES POSTAL SERVICE, AND THE EMERGENCY SERVICE AGENCIES OF ALL ROAD CLOSURES AND CHANGES IN THE TRAFFIC MAINTENANCE PLANS. THE CONTRACTOR SHALL NOTIFY THE CITY OF CHAMPAIGN OF ALL ROAD CLOSURES AND CHANGES IN THE TRAFFIC MAINTENANCE PLANS A MINIMUM OF 48 HOURS IN ADVANCE.

34. THE CONTRACTOR SHALL BE RESPONSIBLE FOR CLEANUP OF THE SITE PRIOR TO FINAL ACCEPTANCE IN ACCORDANCE WITH ARTICLE 104.06 OF THE STANDARD SPECIFICATIONS. THIS WORK SHALL ALSO INCLUDE CLEANING ALL DRAINAGE FACILITIES OF FOREIGN MATERIALS IN ACCORDANCE WITH ARTICLE 602.15 OF THE STANDARD SPECIFICATIONS. [THIS WORK SHALL BE DONE AS DIRECTED BY THE ENGINEER AND NO ADDITIONAL COMPENSATION WILL BE ALLOWED.]

35. THERE ARE NO COMMITMENTS FOR THIS PROJECT.

FILE NAME =  
ps:\00010640\_Champaign - Stratton Safe School Routes\Plans\sheet\102gennote.dgn  
PLOT DATE =  
3/9/2014 1:51:51 PM

DESIGNED - K.L.R.	REVISED -
DRAWN - K.L.R.	REVISED -
CHECKED - S.M.W.	REVISED -
DATE - 02-2014	REVISED -

STATE OF ILLINOIS  
DEPARTMENT OF TRANSPORTATION

GENERAL NOTES

SCALE: NONE SHEET NO. 2 OF 20 SHEETS STA. TO STA.

F.A.P. RTE.	SECTION	COUNTY	TOTAL SHEETS	SHEET NO.
806	12-00293-00-SP	CHAMPAIGN	20	2
FED. ROAD DIST. NO. ILLINOIS FED. AID PROJECT			CONTRACT NO. 91486	

**ILLINOIS HIGHWAY STANDARD DRAWINGS**

STANDARD NO.	DESCRIPTION
000001-06	STANDARDS SYMBOLS, ABBREVIATIONS AND PATTERNS
001006	DECIMAL OF AN INCH AND OF A FOOT
420001-07	PAVEMENT JOINTS
424001-07	PERPENDICULAR CURB RAMPS FOR SIDEWALKS
424016-01	MID-BLOCK CURB RAMPS FOR SIDEWALKS
424031-01	MEDIAN PEDESTRIAN CROSSINGS
602306-03	INLET - TYPE B
602601-03	PRECAST REINFORCED CONCRETE FLAT SLAB TOP
604006-04	FRAME AND GRATE TYPE 3
606001-05	CONCRETE CURB TYPE B AND COMBINATION CONCRETE CURB AND GUTTER
606301-04	PC CONCRETE ISLANDS AND MEDIANS
701301-04	LANE CLOSURE, 2L, 2W SHORT TIME OPERATIONS
701501-06	URBAN LANE CLOSURE, 2L, 2W, UNDIVIDED
701602-07	URBAN LANE CLOSURE, MULTILANE 2W WITH BIDIRECTIONAL LEFT TURN LANE
701606-09	URBAN LANE CLOSURE, MULTILANE 2W WITH MOUNTABLE MEDIAN
701701-09	URBAN LANE CLOSURE, MULTILANE INTERSECTIONS
701801-05	SIDEWALK, CORNER OR CROSSWALK CLOSURE
701901-03	TRAFFIC CONTROL DEVICES
720001-01	SIGN PANEL MOUNTING DETAILS
720006-04	SIGN PANEL ERECTION DETAILS
728001-01	TELESCOPING STEEL SIGN SUPPORTS
780001-04	TYPICAL PAVEMENT MARKINGS

**LEGEND**

EXISTING	PROPOSED	EXISTING	PROPOSED

FILE NAME = p:\00010640\_Champaign - Stratton Safe School Routes\Plans\Sheets\03hwystd.dgn  
 PLOT DATE = 3/9/2014 1:51:51 PM

DESIGNED - K.L.R.	REVISED -
DRAWN - K.L.R.	REVISED -
CHECKED - S.M.W.	REVISED -
DATE - 02-2014	REVISED -

STATE OF ILLINOIS  
DEPARTMENT OF TRANSPORTATION

**HIGHWAY STANDARDS AND LEGEND**

SCALE: NONE SHEET NO. 3 OF 20 SHEETS STA. TO STA.

F.A.P. RTE.	SECTION	COUNTY	TOTAL SHEETS	SHEET NO.
806	12-00293-00-SP	CHAMPAIGN	20	3
FED. ROAD DIST. NO.		ILLINOIS FED. AID PROJECT		
CONTRACT NO. 91486				

# SUMMARY OF QUANTITIES

CODE NO.	ITEM	UNIT	TOTAL QUANTITY
20100110	TREE REMOVAL (6 TO 15 UNITS DIAMETER)	UNIT	40
20200100	EARTH EXCAVATION	CU YD	63
21101625	TOPSOIL FURNISH AND PLACE, 6"	SQ YD	610
25200100	SODDING	SQ YD	610
25200200	SUPPLEMENTAL WATERING	UNIT	6
28000510	INLET FILTERS	EACH	8
31101200	SUBBASE GRANULAR MATERIAL, TYPE B 4"	SQ YD	76
40201000	AGGREGATE FOR TEMPORARY ACCESS	TON	1
42300400	PORTLAND CEMENT CONCRETE DRIVEWAY PAVEMENT, 8 INCH	SQ YD	92
42400300	PORTLAND CEMENT CONCRETE SIDEWALK 6 INCH	SQ FT	3019
42400800	DETECTABLE WARNINGS	SQ FT	44
44000100	PAVEMENT REMOVAL	SQ YD	28
44000200	DRIVEWAY PAVEMENT REMOVAL	SQ YD	132
44000500	COMBINATION CURB AND GUTTER REMOVAL	FOOT	168
44000600	SIDEWALK REMOVAL	SQ FT	439
• 50900805	PEDESTRIAN RAILING	FOOT	21
• 55080090	STORM SEWERS, CLASS B, TYPE I 18"	FOOT	5
• 59300100	CONTROLLED LOW-STRENGTH MATERIAL	CU YD	1
60266600	VALVE BOXES TO BE ADJUSTED	EACH	1
• 60620400	CONCRETE MEDIAN, TYPE SB-9.06	SQ FT	114
67100100	MOBILIZATION	L SUM	1
70300520	PAVEMENT MARKING TAPE, TYPE III 4"	FOOT	100
70301000	WORK ZONE PAVEMENT MARKING REMOVAL	SQ FT	40

\*SEE SPECIAL PROVISIONS

SUPPLEMENTAL WATERING 25200200	
LOCATION	UNIT
TOKEN QUANTITY	6
TOTAL	6

EARTH EXCAVATION 20200100	
LOCATION	CU YD
AS NEEDED UNDERNEATH PROPOSED SIDEWALK	63
TOTAL	63

CODE NO.	ITEM	UNIT	TOTAL QUANTITY
72000100	SIGN PANEL - TYPE 1	SQ FT	70
72500300	OBJECT MARKER - TYPE 3	EACH	2
• 72800100	TELESCOPING STEEL SIGN SUPPORT	FOOT	78
Δ 78000600	THERMOPLASTIC PAVEMENT MARKING - LINE 12"	FOOT	84
Δ 78009006	MODIFIED URETHANE PAVEMENT MARKING - LINE 6"	FOOT	89
Δ 78009024	MODIFIED URETHANE PAVEMENT MARKING - LINE 24"	FOOT	14
78300100	PAVEMENT MARKING REMOVAL	SQ FT	90
Δ • 84200804	REMOVAL OF POLE FOUNDATION	EACH	2
Δ • 87502710	TRAFFIC SIGNAL POST, ALUMINUM 17 FT.	EACH	2
Δ • X0326899	SOLAR-POWERED FLASHING BEACON ASSEMBLY (COMPLETED)	EACH	1
• X6024504	INLETS, TYPE B, WITH FRAME AND GRATE, SPECIAL	EACH	2
• X6060048	COMBINATION CONCRETE CURB AND GUTTER, TYPE B-6.18 (SPECIAL)	FOOT	108
• X6060052	COMBINATION CONCRETE CURB AND GUTTER, TYPE B-6.24 (SPECIAL)	FOOT	43
• X6064200	COMBINATION CONCRETE CURB AND GUTTER, TYPE B-6.12 (SPECIAL)	FOOT	29
• X7010216	TRAFFIC CONTROL AND PROTECTION, (SPECIAL)	L SUM	1
• X7015005	CHANGEABLE MESSAGE SIGN	CAL DA	28
• X7200054	REMOVE, STOCKPILE AND REPLACE SIGN PANEL AND SIGN PANEL ASSEMBLY (SPECIAL)	EACH	1
Δ • X8360120	LIGHT POLE FOUNDATION, SPECIAL	EACH	1
• XX004603	CONCRETE SLAB	SQ YD	29
• XX007493	CONNECT TO BOX CULVERT	EACH	1
• Z0007127	HANDRAIL REMOVAL	L SUM	1
• Z0013798	CONSTRUCTION LAYOUT	L SUM	1
• Z0042300	PORTLAND CEMENT CONCRETE SIDEWALK CURB	FOOT	11

\*SEE SPECIAL PROVISIONS

Δ SPECIALTY ITEMS

SEE REMOVAL PLANS, ROADWAY PLANS, MAINTENANCE OF TRAFFIC PLANS, AND PAVEMENT MARKING PLANS FOR MORE SCHEDULES OF QUANTITIES.

FILE NAME = p:\00010640\_Champaign - Stratton Safe School Routes\Plans\sheet\04summary.dgn  
PLOT DATE = 3/7/2014 3:16:06 PM

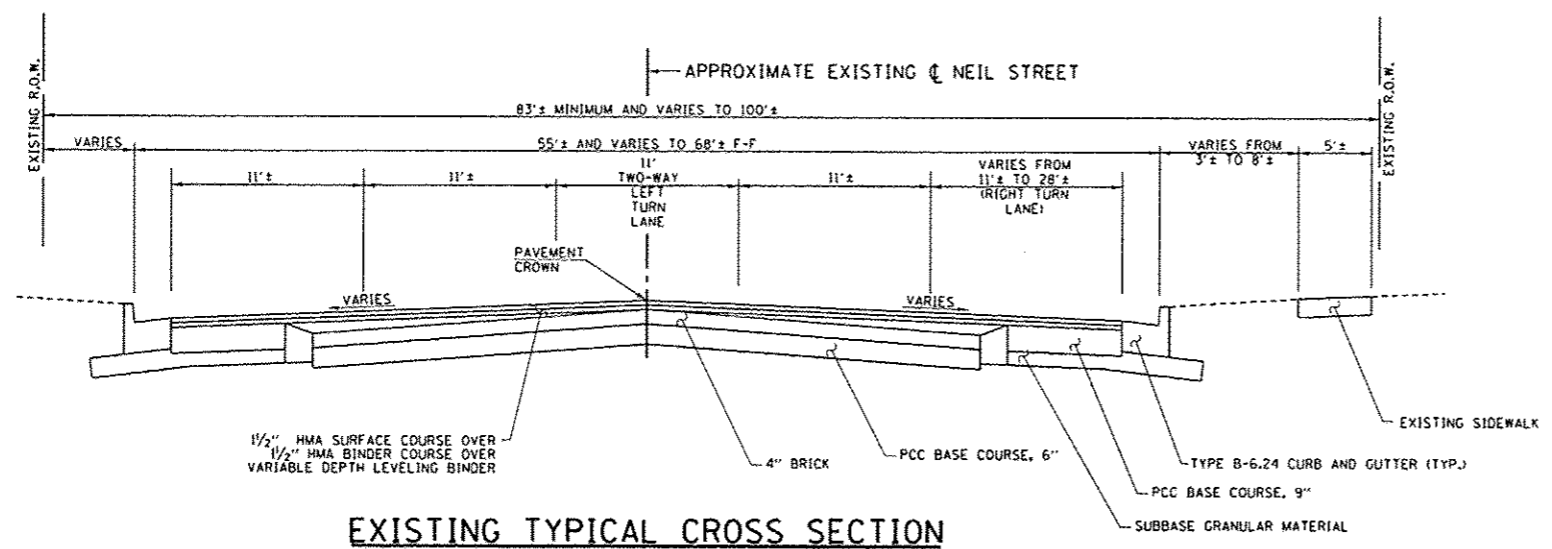
DESIGNED - K.L.R.	REVISED -
DRAWN - K.L.R.	REVISED -
CHECKED - S.M.W.	REVISED -
DATE - 02-2014	REVISED -

STATE OF ILLINOIS  
DEPARTMENT OF TRANSPORTATION

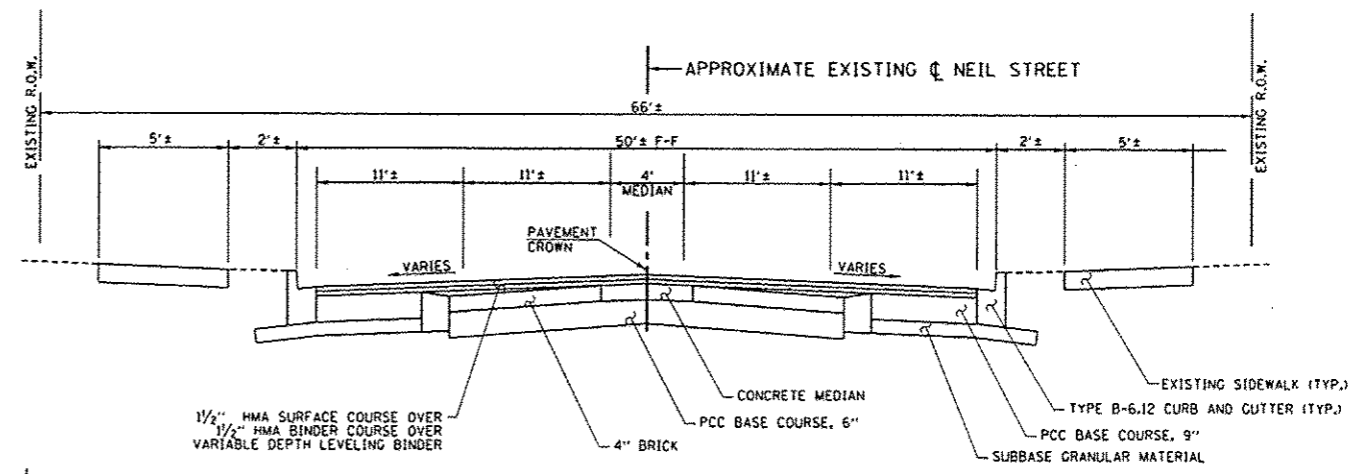
## SUMMARY OF QUANTITIES

SCALE : NONE SHEET NO. 4 OF 20 SHEETS STA. TO STA.

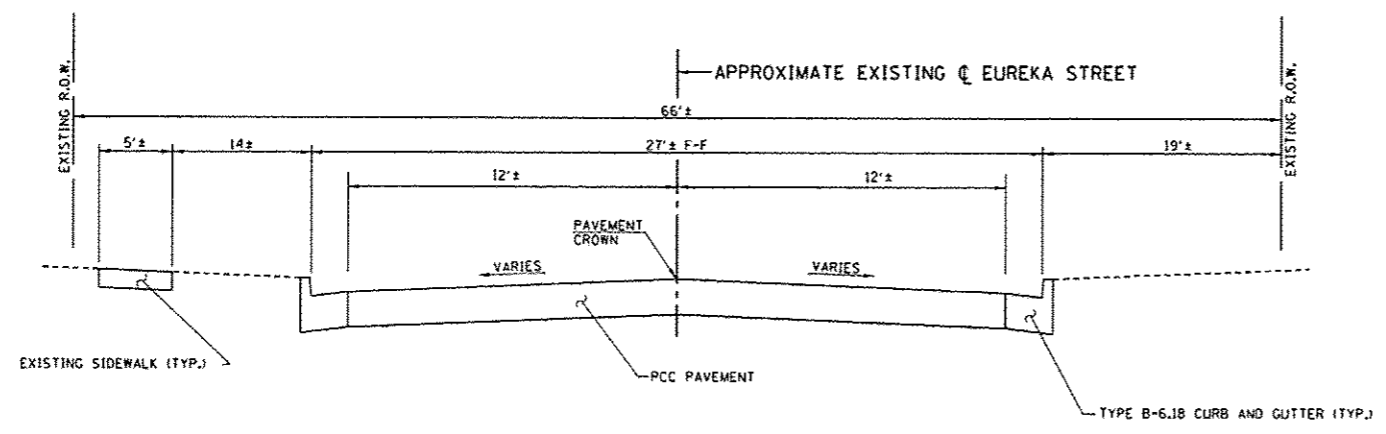
F.A.P. RTE. 806	SECTION 12-00293-00-SP	COUNTY CHAMPAIGN	TOTAL SHEETS 20	SHEET NO. 4
FED. ROAD DIST. NO. ILLINOIS FED. AID PROJECT			CONTRACT NO. 91486	



**EXISTING TYPICAL CROSS SECTION  
NEIL STREET**  
STA. 224+30.00 TO STA. 227+13.90



**EXISTING TYPICAL CROSS SECTION  
NEIL STREET  
SOUTH OF EUREKA STREET**



**EXISTING TYPICAL CROSS SECTION  
EUREKA STREET**  
STA. 100+24.00 TO STA. 103+14.70

**NOTE**  
THE EXISTING PAVEMENT TYPES AND THICKNESSES WERE TAKEN FROM EXISTING PLANS AND FROM PAVEMENT CORES AND REPRESENT THE BEST AVAILABLE INFORMATION. NO ADDITIONAL COMPENSATION WILL BE ALLOWED FOR PAVEMENT REMOVAL ITEMS DUE TO VARIATIONS IN PAVEMENT TYPES OR THICKNESSES AS SPECIFIED IN ARTICLE 440.07 OF THE STANDARD SPECIFICATIONS.

FILE NAME : p:\00010640\_Champaign - Stratton Safe School Routes\Plans\Sheets\06typsec.dgn  
PLOT DATE : 3/9/2014 1:51:53 PM

DESIGNED - K.L.R.	REVISED -
DRAWN - K.L.R.	REVISED -
CHECKED - S.M.W.	REVISED -
DATE - 02-2014	REVISED -

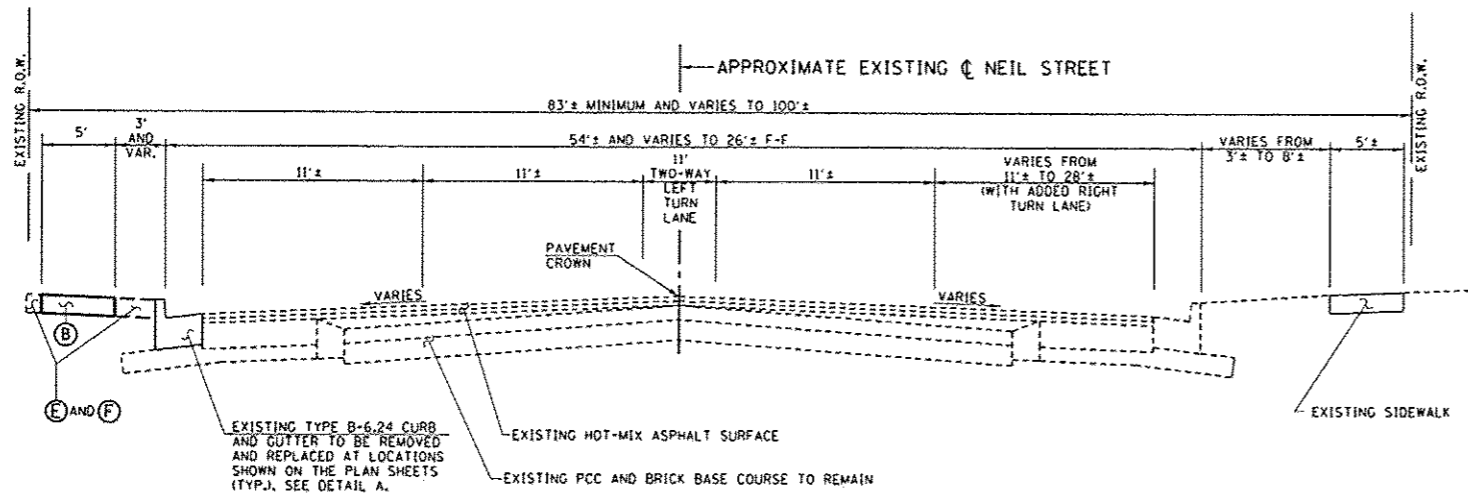
STATE OF ILLINOIS  
DEPARTMENT OF TRANSPORTATION

**EXISTING TYPICAL SECTIONS**  
SCALE : NONE SHEET NO. 5 OF 20 SHEETS STA. TO STA.

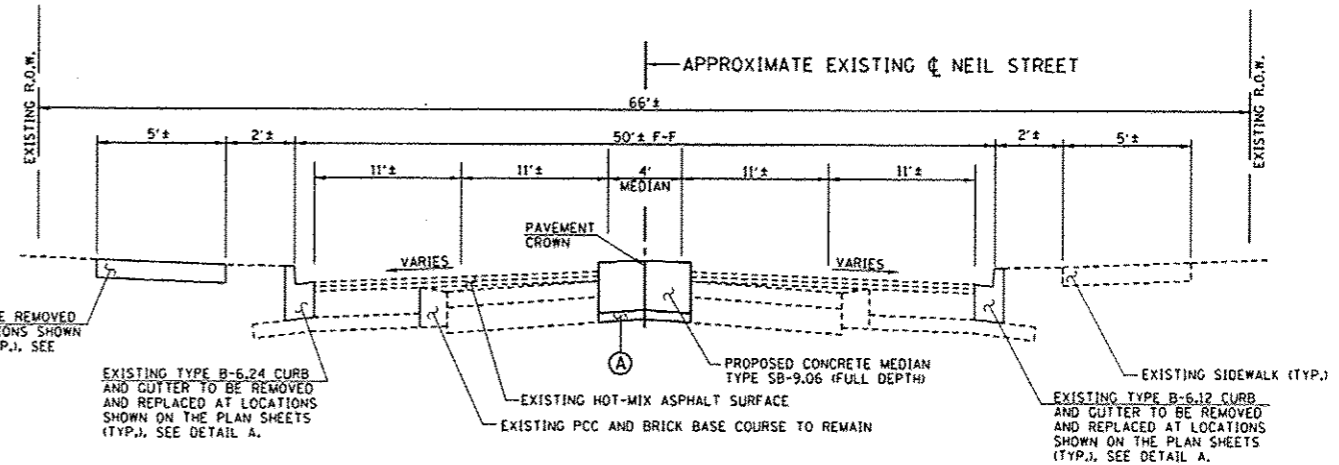
F.A.P. RTE.	SECTION	COUNTY	TOTAL SHEETS	SHEET NO.
806	12-00293-00-SP	CHAMPAIGN	20	5
FED. ROAD DIST. NO. ILLINOIS FED. AID PROJECT			CONTRACT NO. 91486	

**PROPOSED TYPICAL SECTION NOTES**

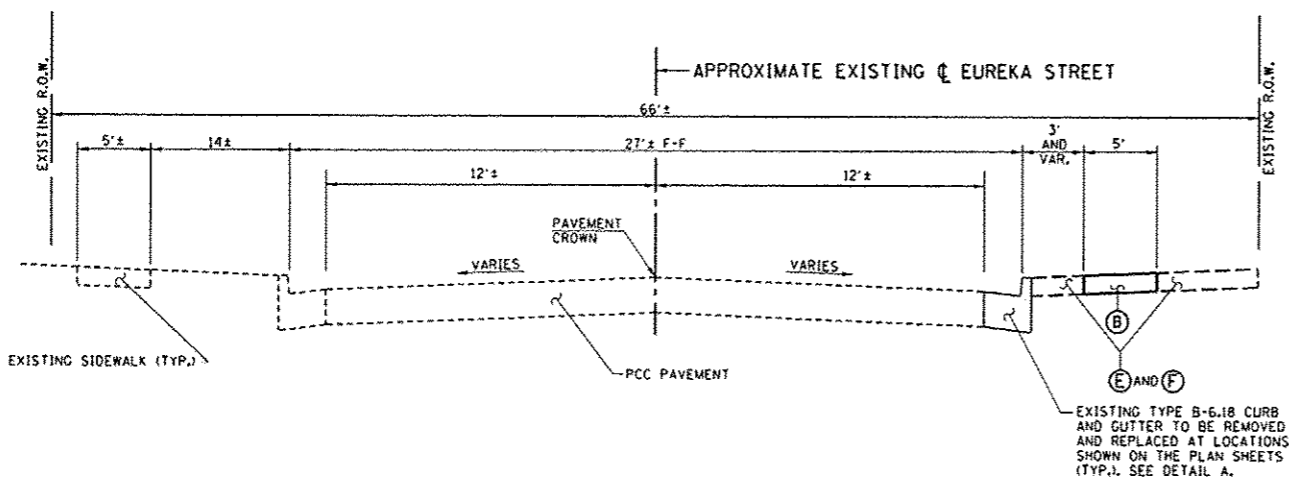
1. SEE THE ROADWAY PLANS AND HORIZONTAL ALIGNMENT LAYOUT AND CONTROL SHEETS FOR LOCATIONS OF EDGES OF PAVEMENTS, CURBS AND GUTTERS, SIDEWALKS, RIGHT-OF-WAY LINES, AND TEMPORARY CONSTRUCTION EASEMENTS.
2. THE EXISTING PAVEMENT TYPE AND THICKNESS REPRESENTS THE BEST INFORMATION AVAILABLE. NO ADDITIONAL COMPENSATION WILL BE ALLOWED FOR PAVEMENT REMOVAL ITEMS DUE TO VARIATIONS IN THE EXISTING PAVEMENT TYPE, THICKNESS, OR AMOUNT OF REINFORCEMENT. THE ADJUSTMENT OF QUANTITIES AS SPECIFIED IN ARTICLE 440.07 OF THE STANDARD SPECIFICATIONS SHALL NOT APPLY.
3. THE FINISHED EARTHWORK SHALL HAVE VEGETATIVE SUSTAINING SOIL COVERING THE TOP 6 INCHES IN AREAS TO BE SODDED. THE TOPSOIL SHALL MEET THE REQUIREMENTS OF ARTICLE 1081.05 OF THE STANDARD SPECIFICATIONS OR BE APPROVED BY THE ENGINEER. THE TOPSOIL REQUIRED FOR PORTIONS OF THIS PROJECT WILL BE PAID FOR AS TOPSOIL FURNISH AND PLACE, 6".
4. ALL EXPOSED EARTH AREAS SHALL BE SODDED IN ACCORDANCE WITH SECTIONS 250 AND 251 OF THE STANDARD SPECIFICATIONS AND THE SPECIAL PROVISIONS.
5. TURF AREAS WHICH ARE UNNECESSARILY DISTURBED BY CONSTRUCTION OPERATIONS SHALL BE REPAIRED WITH TOPSOIL AND SOD AS DIRECTED BY THE ENGINEER AND AT THE CONTRACTOR'S EXPENSE.
6. CURB HEIGHTS MAY BE ADJUSTED BY THE ENGINEER TO MEET EXISTING FIELD CONDITIONS. THE COST OF CONSTRUCTING THE CURB AND GUTTER WITH VARYING CURB HEIGHTS SHALL BE INCLUDED IN THE COST OF THE COMBINATION CONCRETE CURB AND GUTTER, TYPE B-6.12 (SPECIAL), TYPE B-6.18 (SPECIAL), OR TYPE B-6.24 (SPECIAL), AND NO ADDITIONAL COMPENSATION WILL BE ALLOWED.
7. THE COMBINATION CONCRETE CURB AND GUTTER ADJACENT TO THE EXISTING CEMENT CONCRETE BASE COURSE SHALL BE IN ACCORDANCE WITH STANDARD 606001 EXCEPT THAT IT SHALL BE CONSTRUCTED TO MATCH THE EXISTING PAVEMENT THICKNESS. THE COST OF THE CURB AND GUTTER, INCLUDING THE ADDITIONAL THICKNESS, WILL BE PAID FOR AT THE CONTRACT UNIT PRICE PER FOOT FOR COMBINATION CONCRETE CURB AND GUTTER, TYPE B-6.12 (SPECIAL), TYPE B-6.18 (SPECIAL), OR TYPE B-6.24 (SPECIAL).
8. THE COMBINATION CONCRETE CURB AND GUTTER MAY BE CONSTRUCTED WITH VARYING GUTTER FLAG SLOPES AT THE DIRECTION OF THE ENGINEER. THE COST OF CONSTRUCTING THE CURB AND GUTTER WITH VARYING GUTTER FLAG SLOPES SHALL BE INCLUDED IN THE COST OF THE COMBINATION CONCRETE CURB AND GUTTER, TYPE B-6.12 (SPECIAL), TYPE B-6.18 (SPECIAL), OR TYPE B-6.24 (SPECIAL), AND NO ADDITIONAL COMPENSATION WILL BE ALLOWED.
9. SAWED TRANSVERSE CONTRACTION JOINTS SHALL BE PLACED AT 15 FOOT CENTERS (MAXIMUM) IN THE COMBINATION CONCRETE CURB AND GUTTER, AND THE JOINTS SHALL BE SEALED. THIS WORK SHALL BE PERFORMED IN ACCORDANCE WITH ARTICLES 606.07, 420.05, AND 420.12 OF THE STANDARD SPECIFICATIONS, EXCEPT THAT SAWING OF THE JOINTS SHALL COMMENCE WITHIN 4 TO 12 HOURS AFTER THE CONCRETE IS PLACED.
10. ALL SAWED JOINTS IN THE COMBINATION CONCRETE CURB AND GUTTER SHALL BE SEALED WITH A JOINT SEALER ARTICLE 606.02 OF THE STANDARD SPECIFICATIONS.
11. THE SUBGRADE SHALL BE PREPARED AND COMPACTED IN ACCORDANCE WITH SECTION 301 OF THE STANDARD SPECIFICATIONS AND THE IDOT SUBGRADE STABILITY MANUAL. IF THE REQUIRED DENSITY AND STABILITY CANNOT BE ATTAINED, IT WILL BE NECESSARY TO UNDERCUT AND REMOVE EARTH AND ORGANIC MATERIAL BELOW THE PROPOSED PAVEMENT SYSTEM TO A MINIMUM DEPTH OF 12 INCHES AS DIRECTED BY THE ENGINEER. ALL UNSTABLE, UNSUITABLE, OR ORGANIC MATERIAL SHALL BE DISPOSED OF OFF THE SITE IN ACCORDANCE WITH ARTICLE 202.03 OF THE STANDARD SPECIFICATIONS OR AS OTHERWISE DIRECTED BY THE ENGINEER. MATERIALS THAT ARE UNDERCUT AND REMOVED BELOW THE PROPOSED PAVEMENT SYSTEM WHERE THE REQUIRED DENSITY AND STABILITY CANNOT BE ATTAINED SHALL BE MEASURED AND PAID FOR AS REMOVAL AND DISPOSAL OF UNSUITABLE MATERIAL. SEE THE "SUBGRADE REMOVAL AND REPLACEMENT DETAIL" ON THE MISCELLANEOUS DETAIL SHEETS FOR ADDITIONAL INFORMATION.
12. ALL REINFORCEMENT BARS SHALL BE EPOXY COATED UNLESS OTHERWISE SHOWN ON THE PLANS OR DIRECTED BY THE ENGINEER.



**PROPOSED TYPICAL CROSS SECTION  
NEIL STREET  
STA. 224+30.00 TO STA. 227+13.90**



**PROPOSED TYPICAL CROSS SECTION  
NEIL STREET  
SOUTH OF EUREKA STREET**



**PROPOSED TYPICAL CROSS SECTION  
EUREKA STREET  
STA. 100+24.00 TO STA. 103+14.70**

**PROPOSED TYPICAL SECTION KEY**

- (A) SUBBASE GRANULAR MATERIAL, TYPE B (VARIABLE DEPTH) (4" MIN.-SEE DETAIL A)
- (B) PORTLAND CEMENT CONCRETE SIDEWALK 6"
- (C) COMBINATION CONCRETE CURB AND GUTTER, TYPE B-6.12 (SPECIAL), TYPE B-6.18 (SPECIAL), OR TYPE B-6.24 (SPECIAL) (SEE DETAIL A)
- (D) LONGITUDINAL CONSTRUCTION JOINT WITH NO. 6 X 24" TIE BARS AT 24" CENTERS DRILLED AND GROUTED IN PLACE (STD. 420001)
- (E) SODDING
- (F) TOPSOIL, FURNISH AND PLACE 6"

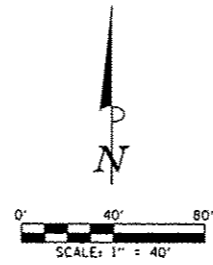
FILE NAME : p:\00010649\_Champaign - Stratton Safe School Routes\Plans\sheet\00typsec.dgn  
PLOT DATE : 3/9/2014 1:51:53 PM

DESIGNED - K.L.R.	REVISED -
DRAWN - K.L.R.	REVISED -
CHECKED - S.M.W.	REVISED -
DATE - 02-2014	REVISED -

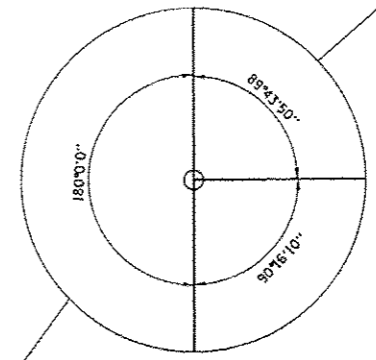
STATE OF ILLINOIS  
DEPARTMENT OF TRANSPORTATION

**PROPOSED TYPICAL SECTIONS**  
SCALE : NONE SHEET NO. 6 OF 20 SHEETS STA. TO STA.

F.A.P. RTE.	SECTION	COUNTY	TOTAL SHEETS	SHEET NO.
806	12-00293-00-SP	CHAMPAIGN	20	6
FED. ROAD DIST. NO. ILLINOIS FED. AID PROJECT			CONTRACT NO. 91486	



STA. 201+00.00 (C NEIL ST.) =  
 STA. 100+00.00 (C EUREKA ST.)  
 N - 1,259,418.74  
 E - 1,009,353.55  
 MAG NAIL SET



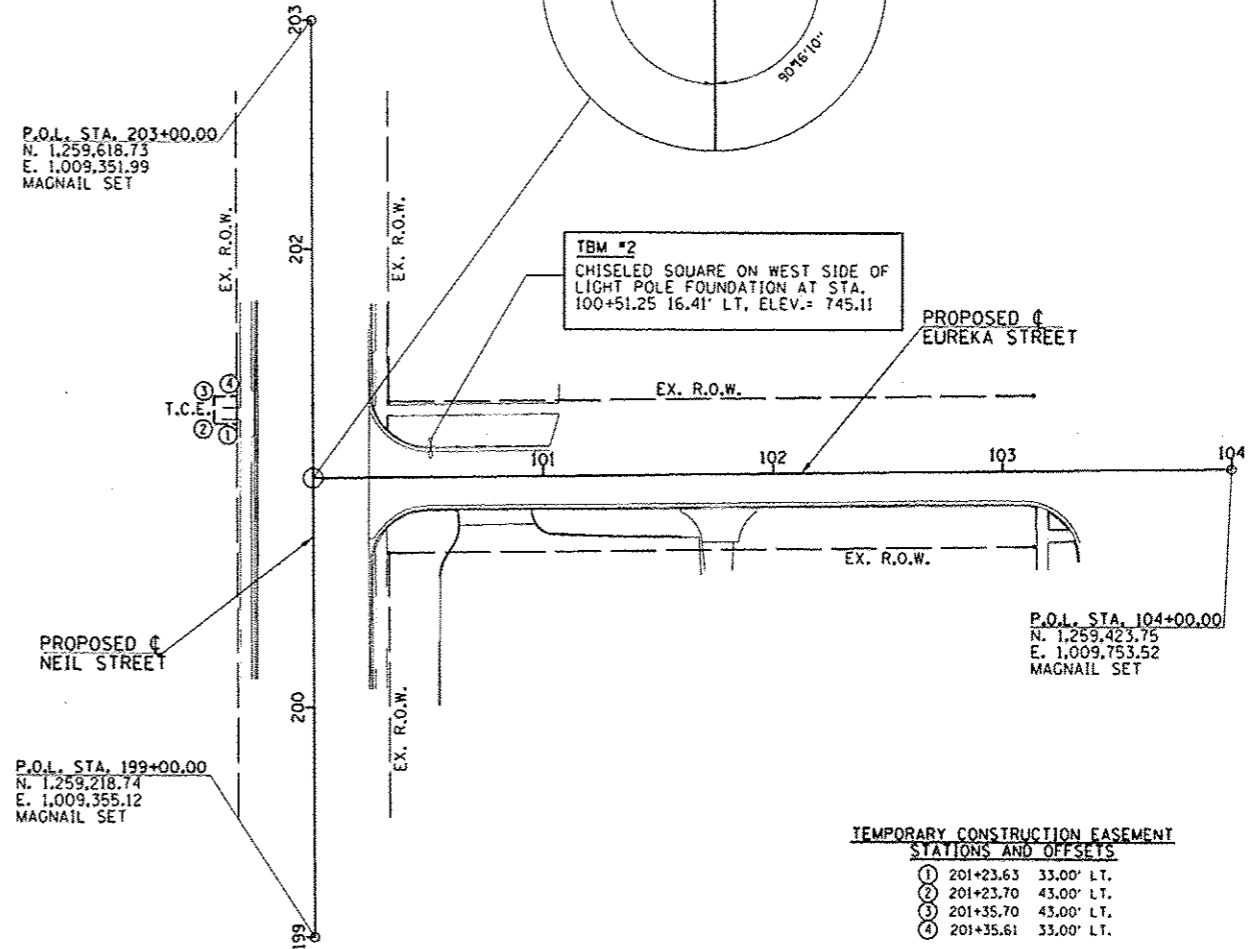
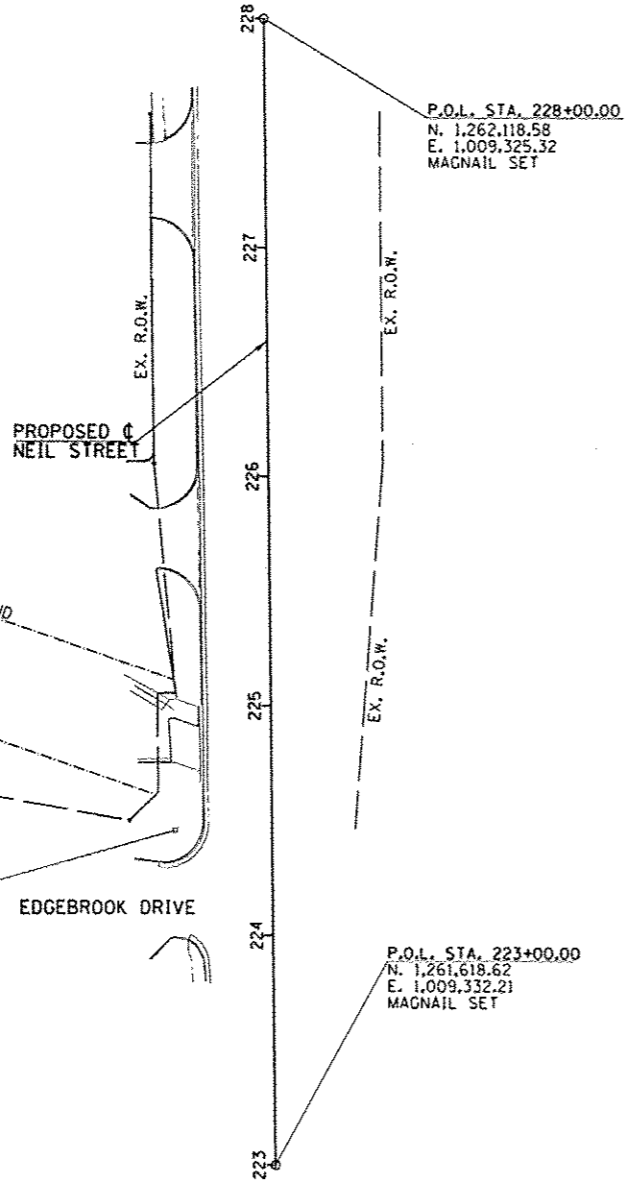
TBM #2  
 CHISELED SQUARE ON WEST SIDE OF  
 LIGHT POLE FOUNDATION AT STA.  
 100+51.25 16.41' LT, ELEV.= 745.11

PROPOSED C  
 EUREKA STREET

P.O.L. STA. 104+00.00  
 N. 1,259,423.75  
 E. 1,009,753.52  
 MAGNAIL SET

- TEMPORARY CONSTRUCTION EASEMENT  
 STATIONS AND OFFSETS
- ① 201+23.63 33.00' LT.
  - ② 201+23.70 43.00' LT.
  - ③ 201+35.70 43.00' LT.
  - ④ 201+35.61 33.00' LT.

PROPOSED CENTERLINE CONTROL COORDINATE TABLE			
ALIGNMENT	DESCRIPTION	LOCAL GROUND SYSTEM	
		NORTHING	EASTING
C EUREKA ST.	C-C	1,259,418.74	1,009,353.55
	P.O.L. 104+00.00	1,259,423.75	1,009,753.52
	P.O.L. 199+00.00	1,259,218.74	1,009,353.52
C NEIL ST.	C-C	1,259,418.74	1,009,353.55
	P.O.L. 203+00.00	1,259,618.73	1,009,351.99
	P.O.L. 223+00.00	1,261,608.62	1,009,332.21
	P.O.L. 228+00.00	1,262,118.58	1,009,325.32



TBM #1  
 NORTH-EAST TOP FLANGE BOLT OF  
 FIRE HYDRANT AT STA. 224+46.20,  
 42.36' LT, ELEV.= 740.39

FILE NAME =  
 p:\c0010640\_Champaign - Stratton Safe School Routes\Plans\sheet\107geom\layout.dgn  
 PLOT DATE =  
 3/9/2014 1:51:54 PM

DESIGNED - K.L.R.	REVISED -
DRAWN - K.L.R.	REVISED -
CHECKED - S.M.W.	REVISED -
DATE - 02-2014	REVISED -

STATE OF ILLINOIS  
 DEPARTMENT OF TRANSPORTATION

HORIZONTAL LAYOUT AND CONTROL

SCALE: 1"=40' SHEET NO. 7 OF 20 SHEETS STA. TO STA.

F.A.P. RTE. 806	SECTION 12-00293-00-5P	COUNTY CHAMPAIGN	TOTAL SHEETS 20	SHEET NO. 7
FED. ROAD DIST. NO. ILLINOIS		FED. AID PROJECT CONTRACT NO. 91486		

SEC. 12, T.19N., R.8E., 3rd P.M.  
CHAMPAIGN COUNTY, ILLINOIS

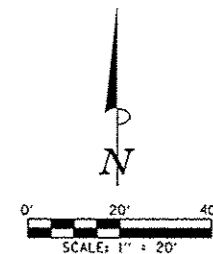
- LEGEND**
- TREE REMOVAL
  - PAVEMENT REMOVAL
  - DRIVEWAY PAVEMENT REMOVAL
  - COMBINATION CURB AND GUTTER REMOVAL
  - SIDEWALK REMOVAL
  - WATER VALVE TO BE ADJUSTED
  - HANDRAIL REMOVAL

ITEMS NOT SHOWN TO BE ADJUSTED OR REMOVED SHALL NOT BE DISTURBED UNLESS OTHERWISE DIRECTED BY THE ENGINEER.

DRIVEWAY CLOSURE SHALL BE STAGED TO MAINTAIN ACCESS TO THE UNION BUILDING PARKING LOT AND THE ALLEY AT ALL TIMES. THIS WORK SHALL BE COORDINATED WITH THE UNION AND NOTICE GIVEN TO RESIDENTS BEFORE WORK BEGINS.

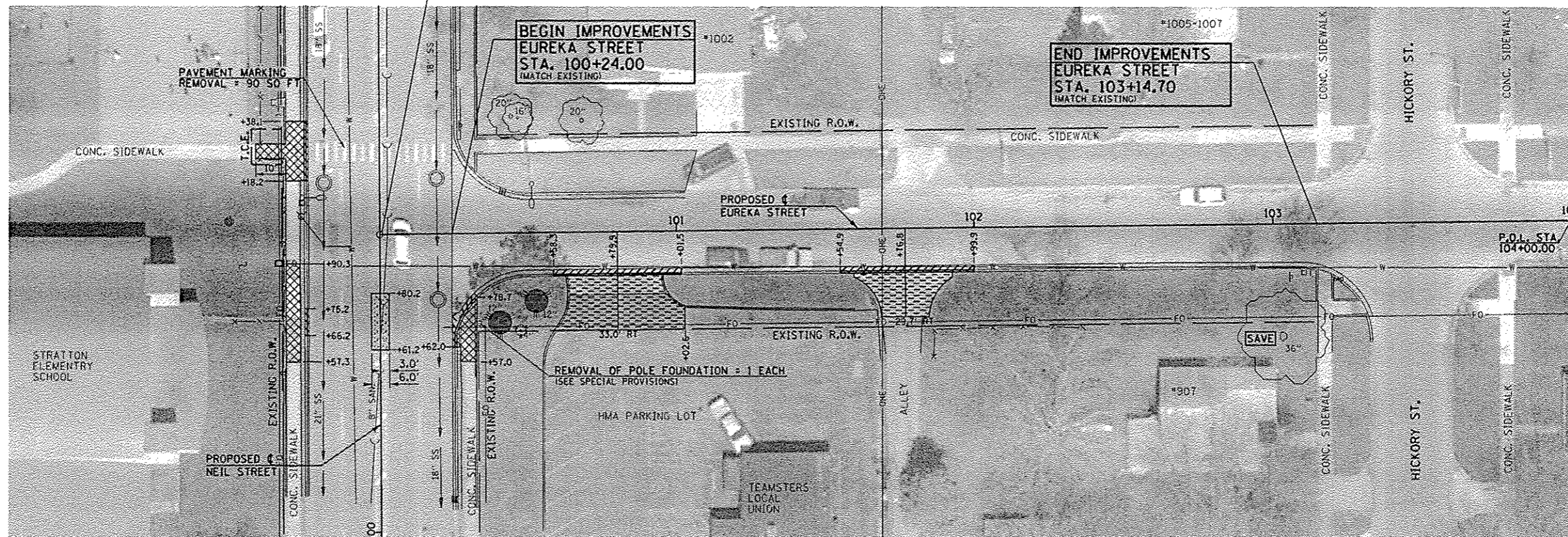
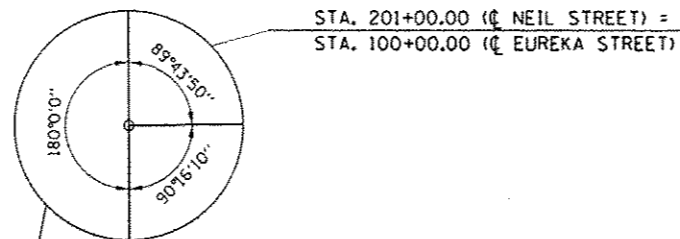
THE CONTRACTOR SHALL ADJUST THE CHAIN-LINK FENCE AND GATE AS REQUIRED BY THE IMPROVEMENTS WITHIN THE LIMITS OF THE TEMPORARY CONSTRUCTION EASEMENT. THIS WORK WILL BE DONE AT THE DIRECTION OF THE ENGINEER, AND SHALL BE INCLUDED IN THE COST OF THE SIDEWALK REMOVAL AND REPLACEMENT PAY ITEMS. NO ADDITIONAL COMPENSATION WILL BE ALLOWED.

REMOVAL OF CONCRETE RETAINING WALL AT THE BACK OF WALK ON SE NEIL AND EUREKA SHALL BE INCLUDED IN THE CONTRACT UNIT PRICE PER SQUARE FOOT FOR SIDEWALK REMOVAL, AND NO ADDITIONAL COMPENSATION WILL BE ALLOWED.



REMOVAL OF POLE FOUNDATION = 1 EACH  
(SEE SHEET 15)  
(SEE SPECIAL PROVISIONS)

212+46.96  
32.53' LT.



**REMOVAL NOTES**

1. NO ADDITIONAL COMPENSATION WILL BE ALLOWED FOR PAVEMENT REMOVAL ITEMS DUE TO VARIATIONS IN THE EXISTING PAVEMENT TYPE, THICKNESS, OR AMOUNT OF REINFORCEMENT. THE ADJUSTMENT OF QUANTITIES AS SPECIFIED IN ARTICLE 440.07 OF THE STANDARD SPECIFICATIONS SHALL NOT APPLY.
2. THE CONTRACTOR SHALL MAKE FULL DEPTH SAW CUTS AT ALL PAVEMENT, SIDEWALK, CURB, AND CURB AND GUTTER REMOVAL LIMITS.
3. THE REMOVAL LIMITS MAY BE ADJUSTED AS DIRECTED BY THE ENGINEER.
4. THE CONTRACTOR SHALL BE RESPONSIBLE FOR REMOVING, STORING, AND RESETTING ALL EXISTING SIGNS AFFECTED BY THE CONSTRUCTION. THIS WORK WILL NOT BE PAID FOR SEPARATELY BUT SHALL BE INCLUDED IN THE COST OF THE VARIOUS REMOVAL PAY ITEMS. AND NO ADDITIONAL COMPENSATION WILL BE ALLOWED. SEE THE PAVEMENT MARKING AND SIGNING PLANS FOR DETAILS.
5. ABANDONED UNDERGROUND UTILITIES THAT CONFLICT WITH CONSTRUCTION SHALL BE REMOVED AND DISPOSED OUTSIDE THE LIMITS OF THE RIGHT OF WAY ACCORDING TO ARTICLE 202.03 OF THE STANDARD SPECIFICATIONS AND AS APPROVED BY THE ENGINEER. THIS WORK WILL NOT BE PAID FOR SEPARATELY BUT SHALL BE CONSIDERED INCLUDED THE COST OF VARIOUS REMOVAL PAY ITEMS. FOR INFORMATION REGARDING THE ELECTRIC SERVICE AT THE POLE FOUNDATION REMOVALS, SEE THE PAVEMENT MARKING AND SIGNING PLANS AND SPECIAL PROVISIONS.

TREE REMOVAL (6 TO 15 UNITS DIAMETER) 20100110	
LOCATION	UNIT
STA. 100+41.14, 30.05' RT.	12
STA. 100+52.43, 22.96' RT.	12
SHEET TOTAL 24	

DRIVEWAY PAVEMENT REMOVAL 44000200	
LOCATION	SO YD
STA. 100+79.9	76.5
STA. 101+76.8	36.5
SHEET TOTAL 113.0	

SIDEWALK REMOVAL 44000600	
LOCATION	SO FT
STA. 200+57.0 RT. TO STA. 200+78.7 RT.	103.5
STA. 200+57.3 LT. TO STA. 200+90.3 RT.	161.0
STA. 201+18.2 LT. TO STA. 201+38.1 RT.	173.5
SHEET TOTAL 439.0	

PAVEMENT REMOVAL 44000100	
LOCATION	SO YD
STA. 200+61.2 C TO STA. 200+80.2 C	13.0
SHEET TOTAL 13.0	

COMBINATION CURB AND GUTTER REMOVAL 44000500	
LOCATION	FOOT
STA. 100+58.3 RT. TO STA. 101+01.5 RT.	43.0
STA. 101+34.9 RT. TO STA. 101+99.9 RT.	45.0
STA. 200+62.0 RT. TO STA. 200+78.7 RT.	20.0
STA. 200+66.2 LT. TO STA. 200+75.2 LT.	9.0
STA. 201+18.2 LT. TO STA. 201+38.1 LT.	20.0
SHEET TOTAL 137.0	

PAVEMENT MARKING REMOVAL 78300100	
LOCATION	SO FT
STA. 201+27.7 LT. AND RT.	90.0
SHEET TOTAL 90.0	

FILE NAME : p:\00010640\_champaign - Stratton Safe School Routes\Plans\Sheets\08removal.dgn  
DESIGNED - K.L.R.  
DRAWN - K.L.R.  
CHECKED - S.M.W.  
DATE - 02-2014

DESIGNED - K.L.R.  
DRAWN - K.L.R.  
CHECKED - S.M.W.  
DATE - 02-2014

STATE OF ILLINOIS  
DEPARTMENT OF TRANSPORTATION

**EUREKA STREET - REMOVAL PLAN**

SCALE 1"=20' SHEET NO. 8 OF 20 SHEETS STA. TO STA.

F.A.P. RTE.	SECTION	COUNTY	TOTAL SHEETS	SHEET NO.
806	12-00293-00-SP	CHAMPAIGN	20	8

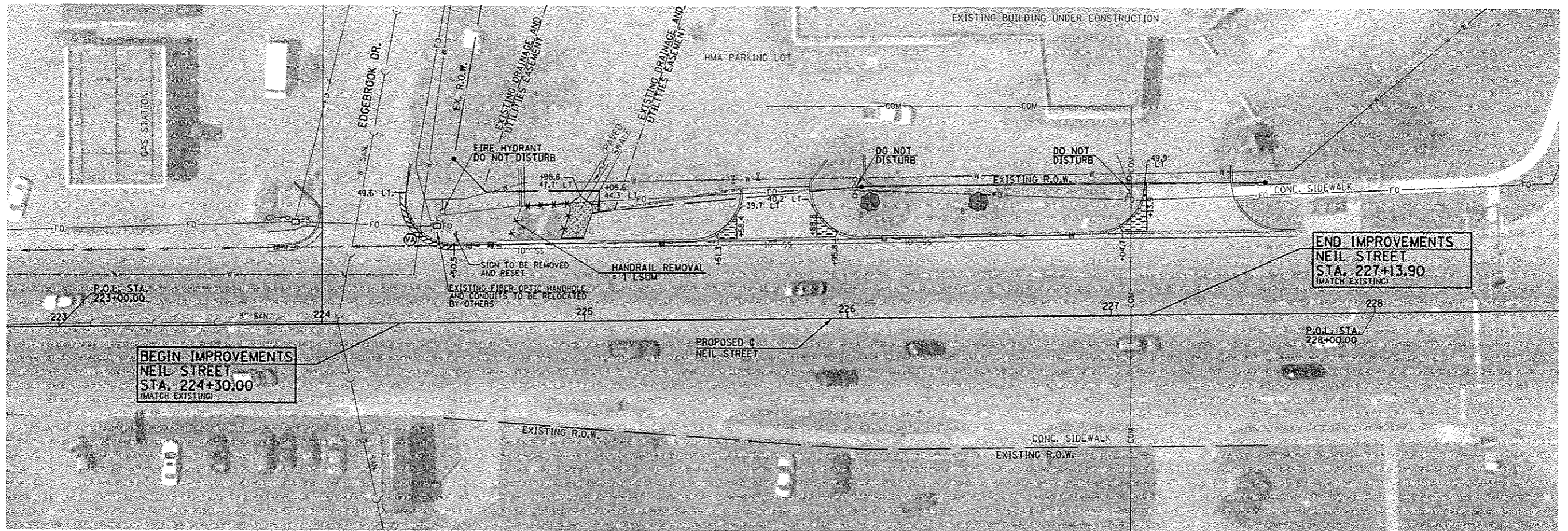
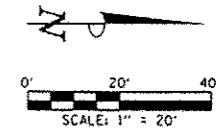
CONTRACT NO. 91486  
FED. ROAD DIST. NO. ILLINOIS FED. AID PROJECT



SEC. 12. T.19N., R.8E., 3rd P.M.  
CHAMPAIGN COUNTY, ILLINOIS

- LEGEND**
- TREE REMOVAL
  - PAVEMENT REMOVAL
  - DRIVEWAY PAVEMENT REMOVAL
  - COMBINATION CURB AND GUTTER REMOVAL
  - SIDEWALK REMOVAL
  - WATER VALVE TO BE ADJUSTED
  - HANDRAIL REMOVAL

ITEMS NOT SHOWN TO BE ADJUSTED OR REMOVED SHALL NOT BE DISTURBED UNLESS OTHERWISE DIRECTED BY THE ENGINEER.



**REMOVAL NOTES**

1. NO ADDITIONAL COMPENSATION WILL BE ALLOWED FOR PAVEMENT REMOVAL ITEMS DUE TO VARIATIONS IN THE EXISTING PAVEMENT TYPE, THICKNESS, OR AMOUNT OF REINFORCEMENT. THE ADJUSTMENT OF QUANTITIES AS SPECIFIED IN ARTICLE 440.07 OF THE STANDARD SPECIFICATIONS SHALL NOT APPLY.
2. THE CONTRACTOR SHALL MAKE FULL DEPTH SAW CUTS AT ALL PAVEMENT, SIDEWALK, CURB, AND CURB AND GUTTER REMOVAL LIMITS.
3. THE REMOVAL LIMITS MAY BE ADJUSTED AS DIRECTED BY THE ENGINEER.
4. THE CONTRACTOR SHALL BE RESPONSIBLE FOR REMOVING, STORING, AND RESETTING ALL EXISTING SIGNS AFFECTED BY THE CONSTRUCTION. THIS WORK WILL NOT BE PAID FOR SEPARATELY BUT SHALL BE INCLUDED IN THE COST OF THE VARIOUS REMOVAL PAY ITEMS, AND NO ADDITIONAL COMPENSATION WILL BE ALLOWED. SEE THE PAVEMENT MARKING AND SIGNING PLANS FOR DETAILS.
5. ABANDONED UNDERGROUND UTILITIES THAT CONFLICT WITH CONSTRUCTION SHALL BE REMOVED AND DISPOSED OUTSIDE THE LIMITS OF THE RIGHT OF WAY ACCORDING TO ARTICLE 202.03 OF THE STANDARD SPECIFICATIONS AND AS APPROVED BY THE ENGINEER. THIS WORK WILL NOT BE PAID FOR SEPARATELY BUT SHALL BE CONSIDERED INCLUDED THE COST OF VARIOUS REMOVAL PAY ITEMS. FOR INFORMATION REGARDING THE ELECTRIC SERVICE AT THE POLE FOUNDATION REMOVALS, SEE THE PAVEMENT MARKING AND SIGNING PLANS AND SPECIAL PROVISIONS.



**TREE REMOVAL (6 TO 15 UNITS DIAMETER)**  
2010010

LOCATION	UNIT
STA. 226+09.22, 44.21' LT.	8
STA. 226+50.42, 43.86' LT.	8
<b>SHEET TOTAL</b>	<b>16</b>



**PAVEMENT REMOVAL**  
44000100

LOCATION	SO YD
STA. 224+91.2 LT., STA. 225+05.6 LT.	15.0
<b>SHEET TOTAL</b>	<b>15.0</b>



**DRIVEWAY PAVEMENT REMOVAL**  
44000200

LOCATION	SO YD
STA. 225+51.3 LT. TO STA. 225+58.4 LT.	5.0
STA. 225+88.8 LT. TO STA. 225+95.8 LT.	5.0
STA. 227+04.7 LT. TO STA. 227+13.9 LT.	9.0
<b>SHEET TOTAL</b>	<b>19.0</b>



**COMBINATION CURB AND GUTTER REMOVAL**  
44000500

LOCATION	FOOT
STA. 224+30.00 LT. TO STA. 224+40.5 LT.	31.0
<b>SHEET TOTAL</b>	<b>31.0</b>



**VALVE BOXES TO BE ADJUSTED**  
60266600

LOCATION	EACH
STA. 224+37.47, 33.7' LT.	1
<b>SHEET TOTAL</b>	<b>1</b>

FILE NAME : p:\00010640\_Champaign - Stratton Safe School Routes\Plans\sheet\08removal.dgn  
PLOT DATE : 3/9/2014 1:52:05 PM

DESIGNED - K.L.R.	REVISED -
DRAWN - K.L.R.	REVISED -
CHECKED - S.M.W.	REVISED -
DATE - 02-2014	REVISED -

STATE OF ILLINOIS  
DEPARTMENT OF TRANSPORTATION

**NEIL STREET - REMOVAL PLAN**

SCALE : 1"=20' SHEET NO. 9 OF 20 SHEETS STA. TO STA.

F.A.P. RTE.	SECTION	COUNTY	TOTAL SHEETS	SHEET NO.
806	12-00293-00-SP	CHAMPAIGN	20	9
FED. ROAD DIST. NO.		ILLINOIS FED. AID PROJECT	CONTRACT NO. 91486	

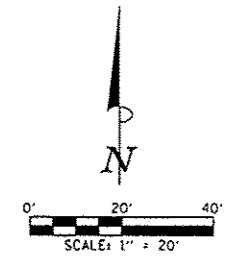
- LEGEND**
- PORTLAND CEMENT CONCRETE DRIVEWAY PAVEMENT (6" P.C.E.-B" C.E.)
  - PORTLAND CEMENT CONCRETE SIDEWALK 6"
  - DETECTABLE WARNINGS
  - INLET FILTER

**TBM #2**  
CHISELED SQUARE ON WEST SIDE OF LIGHT POLE FOUNDATION AT STA. 100+51.25 16.41' LT. ELEV. = 745.11

**SEC. 12, T.19N., R.8E., 3rd P.M. CHAMPAIGN COUNTY, ILLINOIS**

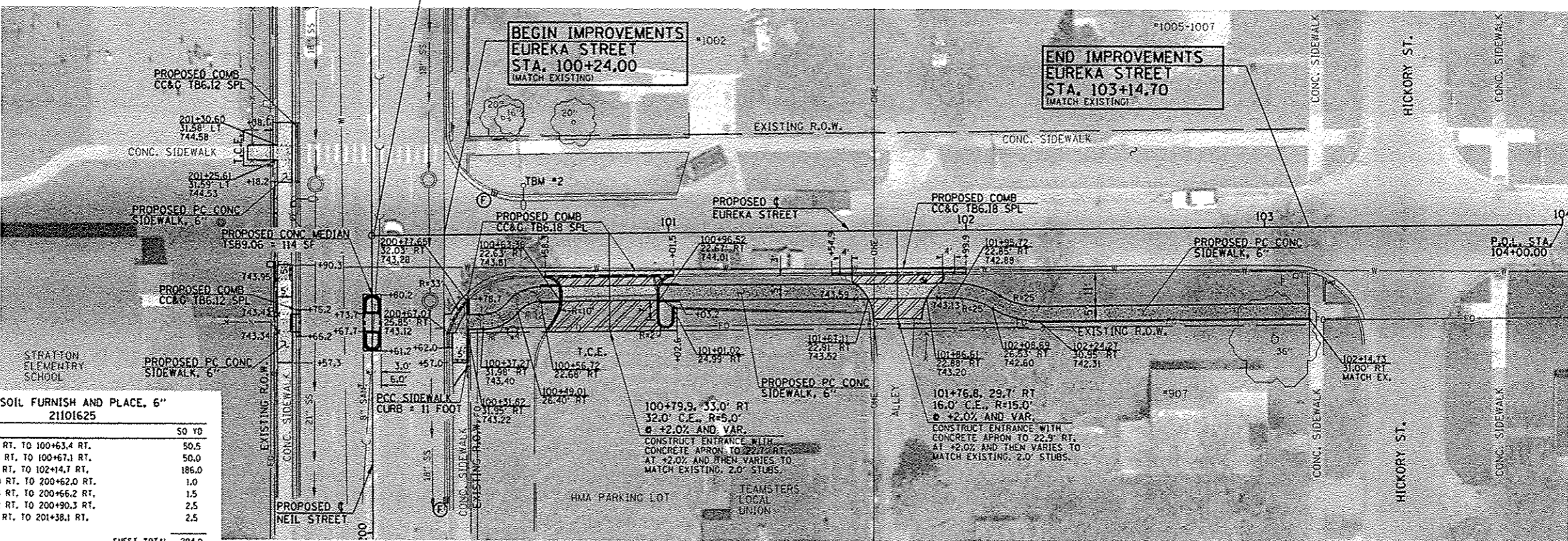
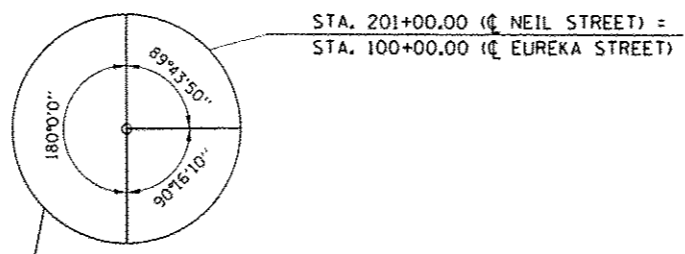
**ROADWAY NOTES**

1. SEE THE HORIZONTAL ALIGNMENT LAYOUT & CONTROL SHEETS FOR PROPOSED TEMPORARY CONSTRUCTION EASEMENT INFORMATION.
2. TIE BARS BETWEEN THE PAVEMENT AND THE CURB AND GUTTER WILL BE REQUIRED.
3. PROPOSED SIDEWALK SHALL HAVE A MAXIMUM CROSS-SLOPE OF 2% UNLESS OTHERWISE INDICATED ON THE PLANS, OR AS DIRECTED BY THE ENGINEER, WHERE EXISTING CROSS-SLOPES ARE GREATER THAN 2%. THE SIDEWALK SHALL TRANSITION FROM THE EXISTING SLOPE TO 2% OVER FIVE FEET.
4. ALL ELEVATIONS SHOWN ARE TO THE TOP SURFACE OF THE SIDEWALK. SEE CURB RAMP DETAILS FOR MORE INFORMATION.
5. THE 6" WIDE MONOLITHIC SIDEWALK CURBS SHALL TRANSITION FROM 0" TO FULL HEIGHT AT A RATE OF 1/12 OR FLATTER.
6. ALL STREET RADII ARE DIMENSIONED TO THE BACK OF CURB.
7. THE COST OF CONSTRUCTING THE PROPOSED CURB AND GUTTER WITH VARIABLE THICKNESS AND CURB HEIGHTS SHALL BE INCLUDED IN THE COST OF THE COMBINATION CONCRETE CURB AND GUTTER, TYPE B-6.12 (SPECIAL), B-6.18 (SPECIAL), AND B-6.24(SPECIAL), AND NO ADDITIONAL COMPENSATION WILL BE ALLOWED. CURB HEIGHT TRANSITIONS SHALL BE AS DIRECTED BY THE ENGINEER.
8. THE PROPOSED SIDEWALK CURB ALONG THE BACK OF WALK FROM 200+57 RT. TO 200+68 RT. SHALL BE PAID FOR SEPARATELY AS PORTLAND CEMENT CONCRETE SIDEWALK CURB. SEE DETAILS AND SPECIAL PROVISIONS FOR MORE INFORMATION.
9. TOPSOIL AND SODDING LIMITS ARE ASSUMED TO BE FROM BACK OF CURB TO THE R.O.W., PARKING LOT, OR 2' BEHIND THE BACK OF WALK WHEN APPLICABLE.



DRIVEWAY CLOSURE SHALL BE STAGED TO MAINTAIN ACCESS TO THE UNION BUILDING PARKING LOT AND THE ALLEY AT ALL TIMES. THIS WORK SHALL BE COORDINATED WITH THE UNION AND NOTICE GIVEN TO RESIDENTS BEFORE WORK BEGINS.

THE CONTRACTOR SHALL ADJUST THE CHAIN-LINK FENCE AND GATE AS REQUIRED BY THE IMPROVEMENTS WITHIN THE LIMITS OF THE TEMPORARY CONSTRUCTION EASEMENT. THIS WORK WILL BE DONE AT THE DIRECTION OF THE ENGINEER, AND SHALL BE INCLUDED IN THE COST OF THE SIDEWALK REMOVAL AND REPLACEMENT PAY ITEMS. NO ADDITIONAL COMPENSATION WILL BE ALLOWED.



**TOPSOIL FURNISH AND PLACE, 6" 21101625**

LOCATION	SO YD
STA. 100+31.8 RT. TO 100+63.4 RT.	50.5
STA. 100+96.5 RT. TO 100+67.1 RT.	50.0
STA. 101+84.8 RT. TO 102+14.7 RT.	186.0
STA. 200+57.0 RT. TO 200+62.0 RT.	1.0
STA. 200+57.3 RT. TO 200+66.2 RT.	1.5
STA. 200+75.2 RT. TO 200+90.3 RT.	2.5
STA. 201+18.2 RT. TO 201+38.1 RT.	2.5
<b>SHEET TOTAL</b>	<b>294.0</b>

**SODDING 25200100**

LOCATION	SO YD
STA. 100+31.8 RT. TO 100+63.4 RT.	50.5
STA. 100+96.5 RT. TO 100+67.1 RT.	50.0
STA. 101+84.8 RT. TO 102+14.7 RT.	186.0
STA. 200+57.0 RT. TO 200+62.0 RT.	1.0
STA. 200+57.3 RT. TO 200+66.2 RT.	1.5
STA. 200+75.2 RT. TO 200+90.3 RT.	2.5
STA. 201+18.2 RT. TO 201+38.1 RT.	2.5
<b>SHEET TOTAL</b>	<b>294.0</b>

**INLET FILTERS 28000510**

LOCATION	EACH
STA. 100+41.4, 13.85' LT.	1
STA. 200+10.8, 24.8' LT.	1
<b>SHEET TOTAL</b>	<b>2</b>

**SUBBASE GRANULAR MATERIAL, TYPE B 4" 31101200**

LOCATION	SO YD
STA. 100+58.3 RT. TO 101+01.5 RT.	15.5
STA. 101+54.9 RT. TO 101+99.9 RT.	16.0
STA. 200+61.2 & TO 200+80.2 &	13.0
STA. 200+62.0 LT. TO 200+78.7 LT.	7.0
STA. 200+66.2 LT. TO 200+75.2 LT.	2.5
STA. 201+18.2 LT. TO 201+38.1 LT.	5.0
<b>SHEET TOTAL</b>	<b>59.0</b>

**PORTLAND CEMENT CONCRETE DRIVEWAY PAVEMENT B" 42300400**

LOCATION	SO YD
STA. 100+79.9 RT., C.E.	50.5
STA. 101+76.8 RT., C.E.	23.0
<b>SHEET TOTAL</b>	<b>73.5</b>

**PORTLAND CEMENT CONCRETE SIDEWALK 6 INCH 42400300**

LOCATION	SO FT
STA. 100+24.0 RT. TO STA. 100+63.4 RT.	278.5
STA. 100+63.4 RT. TO STA. 100+96. RT.	350.5
STA. 100+96.5 RT. TO STA. 101+67.1 RT.	201.0
STA. 101+67.1 RT. TO STA. 101+86.6 RT.	639.5
STA. 101+86.6 RT. TO STA. 102+14.7 RT.	115.0
STA. 200+57.3 LT. TO STA. 200+90.3 LT.	162.0
STA. 201+18.2 LT.S TO STA. 201+38.1 LT.	149.0
<b>SHEET TOTAL</b>	<b>1895.5</b>

**DETECTABLE WARNINGS 42400800**

LOCATION	SO FT
STA. 200+67.7 RT. TO 200+73.7 RT.	12.0
STA. 200+67.7 LT. TO 200+77.66 LT	21.0
<b>SHEET TOTAL</b>	<b>33.0</b>

**CONCRETE MEDIAN TYPE SB-9.12 60620800**

LOCATION	SO FT
STA. 200+61.2 & TO 200+80.2 &	114.0
<b>SHEET TOTAL</b>	<b>114.0</b>

**COMBINATION CONCRETE CURB AND GUTTER TYPE B-6.18 (SPECIAL) X6060048**

LOCATION	FOOT
STA. 100+58.3 RT. TO 101+01.5 RT.	43.5
STA. 101+54.9 RT. TO 101+99.9 RT.	45.0
STA. 200+62.0 LT. TO 200+78.7 LT.	19.5
<b>SHEET TOTAL</b>	<b>108.0</b>

**COMBINATION CONCRETE CURB AND GUTTER TYPE B-6.12 (SPECIAL) X6060052**

LOCATION	FOOT
STA. 200+66.2 LT. TO 200+75.2 LT.	9.0
STA. 201+18.2 LT. TO 201+38.1 LT.	20.0
<b>SHEET TOTAL</b>	<b>29.0</b>

**PORTLAND CEMENT CONCRETE SIDEWALK CURB, Z0042300**

LOCATION	SO YD
STA. 200+57.0 RT. TO 200+67.6 RT.	11.0
<b>SHEET TOTAL</b>	<b>11.0</b>

FILE NAME = p:\00010040\_champaign - Stratton Safe School Routes\Plans\Sheets\09roadway.dgn  
 PLOT DATE = 3/9/2014 1:52:14 PM

DESIGNED - K.L.R. REVISED -  
 DRAWN - K.L.R. REVISED -  
 CHECKED - S.M.W. REVISED -  
 DATE - 02-2014 REVISED -

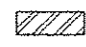
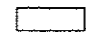


STATE OF ILLINOIS  
 DEPARTMENT OF TRANSPORTATION

**EUREKA STREET - SIDEWALK PLAN**

SCALE: 1"=20' SHEET NO. 10 OF 20 SHEETS STA. TO STA.

F.A.P. RTE.	SECTION	COUNTY	TOTAL SHEETS	SHEET NO.
806	12-00293-00-SP	CHAMPAIGN	20	10
FED. ROAD DIST. NO. ILLINOIS FED. AID PROJECT			CONTRACT NO. 91486	

LEGEND

-  PORTLAND CEMENT CONCRETE DRIVEWAY PAVEMENT (6" P.E.-8" C.E.)
-  PORTLAND CEMENT CONCRETE SIDEWALK 6"
-  DETECTABLE WARNINGS
-  INLET FILTER

**TBM #1**  
NORTH-EAST TOP FLANGE BOLT OF FIRE HYDRANT AT STA. 224+46.20 42.36' LT. ELEV.: 740.39

STORM SEWER PIPE SCHEDULE			
CODE NO.	DESCRIPTION	UNIT	QTY.
550B0090	STORM SEWERS, CLASS B, TYPE 1 18"	FOOT	5

STORM SEWER STRUCTURE SCHEDULE			
CODE NO.	DESCRIPTION	UNIT	QTY.
X6024504	INLETS, TYPE B, WITH FRAME AND GRATE, SPECIAL	EACH	2

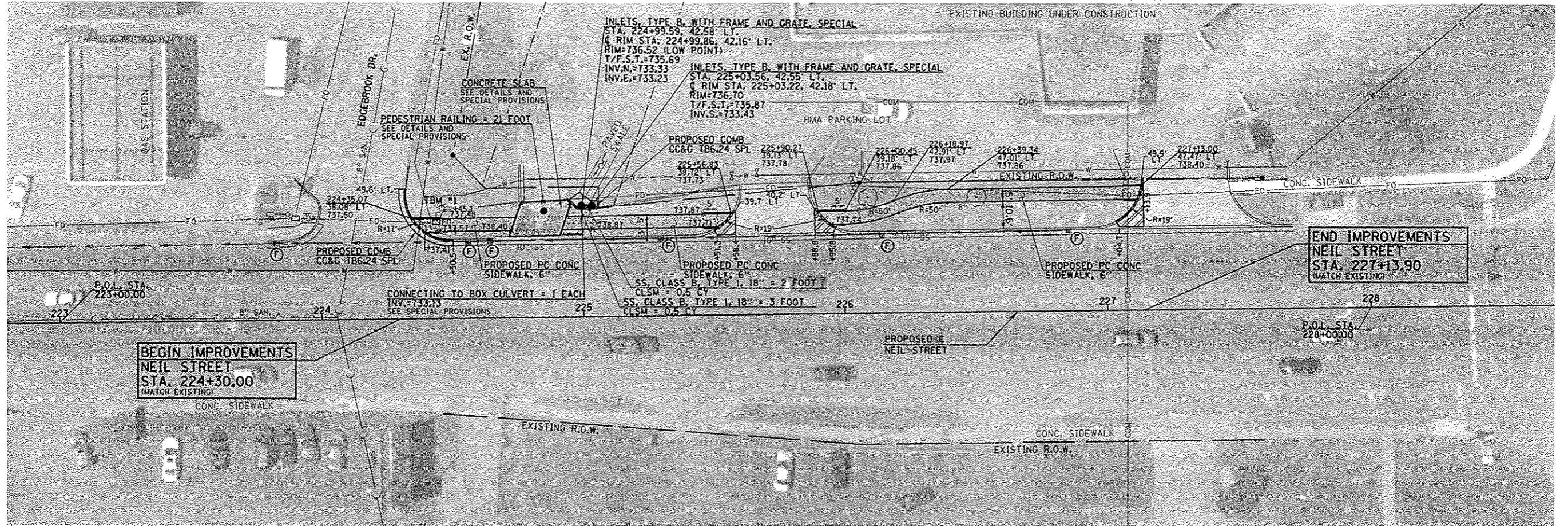
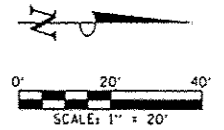
SEC. 12, T.19N., R.8E., 3rd P.M.  
CHAMPAIGN COUNTY, ILLINOIS

CONTROLLED LOW-STRENGTH MATERIAL  
59300100

LOCATION	CU YD
INLET-INLET	0.5
INLET-EXIST. BOX CULVERT	0.5
<b>SHEET TOTAL</b>	<b>1.0</b>

ROADWAY NOTES

- SEE THE HORIZONTAL ALIGNMENT LAYOUT & CONTROL SHEETS FOR PROPOSED TEMPORARY CONSTRUCTION EASEMENT INFORMATION.
- TIE BARS BETWEEN THE PAVEMENT AND THE CURB AND GUTTER WILL BE REQUIRED.
- PROPOSED SIDEWALK SHALL HAVE A MAXIMUM CROSS-SLOPE OF 2% UNLESS OTHERWISE INDICATED ON THE PLANS, OR AS DIRECTED BY THE ENGINEER. WHERE EXISTING CROSS-SLOPES ARE GREATER THAN 2%, THE SIDEWALK SHALL TRANSITION FROM THE EXISTING SLOPE TO 2% OVER FIVE FEET.
- ALL ELEVATIONS SHOWN ARE TO THE TOP SURFACE OF THE SIDEWALK. SEE CURB RAMP DETAILS FOR MORE INFORMATION.
- THE 6" WIDE MONOLITHIC SIDEWALK CURBS SHALL TRANSITION FROM 0" TO FULL HEIGHT AT A RATE OF 1:12 OR FLATTER.
- ALL STREET RADII ARE DIMENSIONED TO THE BACK OF CURB.
- THE COST OF CONSTRUCTING THE PROPOSED CURB AND GUTTER WITH VARIABLE THICKNESS AND CURB HEIGHTS SHALL BE INCLUDED IN THE COST OF THE COMBINATION CONCRETE CURB AND GUTTER, TYPE B-6.12 (SPECIAL), B-6.18 (SPECIAL), AND B-6.24(SPECIAL), AND NO ADDITIONAL COMPENSATION WILL BE ALLOWED. CURB HEIGHT TRANSITIONS SHALL BE AS DIRECTED BY THE ENGINEER.
- THE PROPOSED SIDEWALK CURB ALONG THE BACK OF WALK FROM 200+57 RT. TO 200+68 RT. SHALL BE PAID FOR SEPARATELY AS PORTLAND CEMENT CONCRETE SIDEWALK CURB. SEE DETAILS AND SPECIAL PROVISIONS FOR MORE INFORMATION.
- TOPSOIL AND SODDING LIMITS ARE ASSUMED TO BE FROM BACK OF CURB TO THE R.O.W., PARKING LOT, OR 2' BEHIND THE BACK OF WALK WHEN APPLICABLE.



TOPSOIL FURNISH AND PLACE, 6" 21101625	
LOCATION	SO YD
STA. 224+30.0 LT. TO 224+95.0 LT.	92.8
STA. 224+93.2 LT. TO 225+57.2 LT.	51.5
STA. 225+87.1 LT. TO 227+13.1 LT.	171.7
<b>SHEET TOTAL</b>	<b>316.0</b>

INLET FILTERS 28000510	
LOCATION	EACH
STA. 223+82.6, 29.2' LT.	1
STA. 224+56.2, 29.2' LT.	1
STA. 224+64.4, 29.3' LT.	1
STA. 225+29.7, 29.5' LT.	1
STA. 226+14.3, 29.9' LT.	1
STA. 226+85.4, 30.7' LT.	1
<b>SHEET TOTAL</b>	<b>6</b>

PORTLAND CEMENT CONCRETE DRIVEWAY PAVEMENT 8" 42300400	
LOCATION	SO YD
STA. 225+51.3 LT. TO STA. 225+95.8 LT.	5.0
STA. 225+88.8 LT. TO STA. 225+95.8 LT.	5.0
STA. 227+04.7 LT. TO STA. 227+13.9 LT.	8.5
<b>SHEET TOTAL</b>	<b>18.5</b>

DETECTABLE WARNINGS 42400800	
LOCATION	SO FT
STA. 224+35.1 LT. TO 224+40.1 LT.	11.0
<b>SHEET TOTAL</b>	<b>11.0</b>

COMBINATION CONCRETE CURB AND GUTTER TYPE B-6.24 (SPECIAL) X6060052	
LOCATION	FOOT
STA. 224+30.0 LT. TO 224+50.0 LT.	31.0
STA. 224+95.0 LT. TO 225+06.0 LT.	12.0
<b>SHEET TOTAL</b>	<b>43.0</b>

SODDING 25200100	
LOCATION	SO YD
STA. 224+30.0 LT. TO 224+95.0 LT.	92.8
STA. 224+93.2 LT. TO 225+57.2 LT.	51.5
STA. 225+87.1 LT. TO 227+13.1 LT.	171.7
<b>SHEET TOTAL</b>	<b>316.0</b>

SUBBASE GRANULAR MATERIAL, TYPE B 4" 31101200	
LOCATION	SO YD
STA. 224+30.0 LT. TO 224+40.5 LT.	12.0
STA. 224+94.9 LT. TO 225+05.6 LT.	5.0
<b>SHEET TOTAL</b>	<b>17.0</b>

PORTLAND CEMENT CONCRETE SIDEWALK 6 INCH 42400300	
LOCATION	SO FT
STA. 224+35.1 LT. TO STA. 224+74.4 LT.	189.0
STA. 224+93.8 LT. TO STA. 225+56.8 LT.	316.0
STA. 225+90.3 LT. TO STA. 227+13.0 LT.	618.5
<b>SHEET TOTAL</b>	<b>1123.5</b>

PEDESTRIAN RAILING 50900805	
LOCATION	FOOT
STA. 224+71.7 LT. TO STA. 224+95.1 LT. (SEE DETAIL SHEET)	21.0
<b>SHEET TOTAL</b>	<b>21.0</b>

CONCRETE SLAB XK004603	
LOCATION	SO YD
STA. 224+71.7 LT. TO STA. 224+95.1 LT.	29.0
<b>SHEET TOTAL</b>	<b>29.0</b>

FILE NAME = p:\c0010640\_Champaign - Stratton Safe School Routes\Plans\Sheets\09roadway.dgn  
PLOT DATE = 3/9/2014 1:52:24 PM

DESIGNED - K.L.R.      REVISED -  
DRAWN - K.L.R.        REVISED -  
CHECKED - S.M.W.     REVISED -  
DATE - 02-2014        REVISED -

STATE OF ILLINOIS  
DEPARTMENT OF TRANSPORTATION

NEIL STREET - SIDEWALK PLAN

SCALE: 1"=20'    SHEET NO. 11 OF 20 SHEETS    STA. TO STA.

F.A.P. RTE.	SECTION	COUNTY	TOTAL SHEETS	SHEET NO.
806	12-00293-00-SP	CHAMPAIGN	20	11
FED. ROAD DIST. NO.			ILLINOIS FED. AID PROJECT	
			CONTRACT NO. 91486	

## TRAFFIC CONTROL GENERAL NOTES

- THE STAGE CONSTRUCTION AND MAINTENANCE OF TRAFFIC PLANS PROVIDE A SUGGESTED STAGE CONSTRUCTION SEQUENCE. PRIOR TO THE START OF CONSTRUCTION OPERATIONS, THE CONTRACTOR SHALL SUBMIT ALL REVISIONS TO THIS SEQUENCE AND THE RESULTANT CHANGES TO THE STAGE CONSTRUCTION AND MAINTENANCE OF TRAFFIC PLANS TO THE ENGINEER FOR APPROVAL. NO DEVIATIONS FROM THE SUGGESTED PLAN WILL BE ALLOWED WITHOUT WRITTEN PERMISSION FROM THE ENGINEER.
- NO DEVIATIONS FROM THE APPROVED TRAFFIC CONTROL PLAN WILL BE ALLOWED WITHOUT WRITTEN AUTHORIZATION FROM THE ENGINEER.
- TWO-WAY TRAFFIC SHALL BE MAINTAINED AT ALL TIMES ON EUREKA STREET AND NEIL STREET.
- TRAFFIC CONTROL AND PROTECTION SHALL BE IN ACCORDANCE WITH THE APPLICABLE PORTIONS OF THE STANDARD SPECIFICATIONS FOR ROAD AND BRIDGE CONSTRUCTION; THE APPLICABLE GUIDELINES CONTAINED IN THE MANUAL ON UNIFORM TRAFFIC CONTROL DEVICES FOR STREETS AND HIGHWAYS; STANDARDS 701301, 701501, 701602, 701606, 701701, 701801, AND 701901; THE TRAFFIC CONTROL PLANS; AND THE SPECIAL PROVISIONS. DELETE ALL REFERENCES TO MEASUREMENT AND PAYMENT.
- TRAFFIC CONTROL AND PROTECTION WILL BE PAID FOR AT THE CONTRACT LUMP SUM PRICE FOR TRAFFIC CONTROL AND PROTECTION (SPECIAL). THE TRAFFIC CONTROL AND PROTECTION INSTALLATION FOR EACH WORK AREA WILL NOT BE PAID FOR SEPARATELY, BUT SHALL BE INCLUDED IN THE LUMP SUM PRICE FOR THIS ITEM. ALL ADDITIONAL TRAFFIC CONTROL DEVICES AND TRAFFIC CONTROL SIGNS REQUIRED TO MAINTAIN THE TRAFFIC CONTROL OR AS DIRECTED BY THE ENGINEER SHALL BE INCLUDED IN THE LUMP SUM PRICE OF TRAFFIC CONTROL AND PROTECTION (SPECIAL).
- TRAFFIC CONTROL SURVEILLANCE WILL NOT BE PAID FOR SEPARATELY FOR THIS PROJECT. THE CONTRACTOR SHALL BE RESPONSIBLE FOR INSPECTING AND MAINTAINING ALL TRAFFIC CONTROL DEVICES AT ALL TIMES INCLUDING NIGHTTIME, WEEKENDS, AND ANY TIME WORKERS ARE NOT PRESENT. THIS WORK SHALL BE PERFORMED IN ACCORDANCE WITH RECURRING SPECIAL PROVISION LRS3. THE COST OF ALL LABOR AND MATERIALS FOR THE MAINTENANCE OF TRAFFIC CONTROL DEVICES SHALL BE INCLUDED IN THE LUMP SUM PRICE OF TRAFFIC CONTROL AND PROTECTION (SPECIAL).
- THE CONTRACTOR SHALL MAINTAIN AT LEAST ONE POINT OF ACCESS TO EACH PROPERTY IN THE WORK AREA AT ALL TIMES. DRIVEWAY CLOSURE SHALL BE STAGED TO MAINTAIN ACCESS TO THE UNION BUILDING PARKING LOT AND THE ALLEY AT ALL TIMES. THIS WORK SHALL BE COORDINATED WITH THE UNION AND NOTICE GIVEN TO RESIDENTS WITH PROPERTIES ADJACENT TO THE ALLEY BEFORE WORK BEGINS.
- FURNISHING, PLACING, AND REMOVING ALL AGGREGATE THAT IS USED TO TEMPORARILY FILL ANY VOIDS OR TO PROVIDE TEMPORARY ACCESS FOR VEHICLES OR PEDESTRIANS WILL BE PAID FOR AT THE CONTRACT UNIT PRICE PER TON FOR AGGREGATE FOR TEMPORARY ACCESS. AN APPROXIMATE QUANTITY OF AGGREGATE FOR TEMPORARY ACCESS HAS BEEN INCLUDED FOR THIS WORK.
- ALL SIDEWALKS SHALL BE OPEN TO PEDESTRIAN TRAFFIC WHEN CONSTRUCTION WORK IS NOT BEING PERFORMED. SIDEWALK CLOSURES SHALL BE LIMITED TO ONE SIDE OF THE STREET AT A TIME.
- PORTABLE CHANGEABLE MESSAGE SIGNS SHALL BE INSTALLED AND OPERATIONAL FIVE DAYS PRIOR TO THE START OF ROAD CONSTRUCTION FOR EACH STAGE AND THREE DAYS PRIOR TO CLOSING ANY ROADWAYS. THE SIGNS SHALL BE INSTALLED IN ADVANCE OF THE WORK ZONES AT LOCATIONS APPROVED BY THE ENGINEER. THE CONTRACTOR SHALL INSPECT THE SIGNS BY 8:00 A.M. EACH DAY TO ENSURE THAT THE SIGNS ARE FULLY OPERATIONAL AND IN PROPER WORKING ORDER. THE SIGNS SHALL BE REMOVED TWO DAYS AFTER THE START OF CONSTRUCTION FOR EACH STAGE. FURNISHING, INSPECTING, MAINTAINING, AND REMOVING THE PORTABLE CHANGEABLE MESSAGE SIGNS SHALL BE INCLUDED IN THE CONTRACT UNIT PRICE PER CALENDAR DAY FOR CHANGEABLE MESSAGE SIGN.
- THE CONTRACTOR SHALL COVER OR REMOVE ANY EXISTING SIGN THAT CONFLICTS WITH THE TRAFFIC CONTROL PLAN AS DIRECTED BY THE ENGINEER.
- FLASHING LIGHTS SHALL BE PLACED ON ALL TYPE III BARRICADES IN ACCORDANCE WITH STANDARD 701901 UNLESS OTHERWISE DIRECTED BY THE ENGINEER. STEADY BURN LIGHTS SHALL BE PLACED ON ALL DRUMS AND BARRICADES (EXCEPT FOR TYPE III BARRICADES) IN ACCORDANCE WITH STANDARD 701901 UNLESS OTHERWISE DIRECTED BY THE ENGINEER.
- TRAFFIC CONTROL DEVICES MAY BE ADJUSTED TO FIT FIELD CONDITIONS AS DIRECTED BY THE ENGINEER. ADDITIONAL TRAFFIC CONTROL DEVICES NOT ASSOCIATED WITH ANY TRAFFIC CONTROL STANDARD MAY BE REQUIRED AS DIRECTED BY THE ENGINEER. THE ADDITIONAL TRAFFIC CONTROL DEVICES SHALL BE INCLUDED IN THE LUMP SUM PRICE OF TRAFFIC CONTROL AND PROTECTION (SPECIAL).
- THE CONTRACTOR SHALL PROVIDE AND INSTALL TWO WEIGHTED SAND BAGS ON EACH TYPE II BARRICADE USED. (ONE WEIGHTED SAND BAG ACROSS EACH BOTTOM RAIL.)
- FOR STABILIZATION, ALL TYPE III BARRICADES SHALL REQUIRE A MINIMUM OF FOUR SAND BAGS PER BARRICADE.
- TRAFFIC CONTROL DEVICES SHALL BE REMOVED AS DIRECTED BY THE ENGINEER.
- TO THE FULLEST EXTENT POSSIBLE, THE EXISTING PAVEMENT MARKING SHALL BE USED FOR TRAFFIC CONTROL. WORK ZONE PAVEMENT MARKING SHALL BE INSTALLED AS REQUIRED BY THE TRAFFIC CONTROL STANDARDS AND THE TRAFFIC CONTROL PLAN, AND AS DIRECTED BY THE ENGINEER.
- THE CONTRACTOR SHALL REMOVE EXISTING PAVEMENT MARKINGS OR PREVIOUSLY INSTALLED WORK ZONE PAVEMENT MARKINGS THAT CONFLICT WITH THE TRAFFIC CONTROL PLAN AS DIRECTED BY THE ENGINEER. REMOVAL OF THE WORK ZONE PAVEMENT MARKINGS WILL BE PAID FOR AT THE CONTRACT UNIT PRICE PER SQUARE FOOT FOR PAVEMENT MARKING REMOVAL. REMOVAL OF THE EXISTING PAVEMENT MARKINGS SHALL BE DONE IN ACCORDANCE WITH SECTION 703 OF THE STANDARD SPECIFICATIONS.
- THE CONTRACTOR SHALL NOTIFY THE CITY OF CHAMPAIGN OF ALL LANE CLOSURES AND CHANGES TO THE TRAFFIC CONTROL PLAN A MINIMUM OF 48 HOURS IN ADVANCE OF THE WORK.
- THE CITY OF CHAMPAIGN WILL BE RESPONSIBLE FOR NOTIFYING THE PUBLIC, THE UNITED STATES POSTAL SERVICE, THE CHAMPAIGN-URBANA MASS TRANSIT DISTRICT, AND THE EMERGENCY SERVICE AGENCIES OF ALL LANE CLOSURES AND CHANGES TO THE TRAFFIC CONTROL PLAN.
- FOR SPECIFIC INSTRUCTIONS ON THE INCLUSION OF SIGNS, BARRICADES, AND OTHER TRAFFIC CONTROL DEVICES FOR INDIVIDUAL WORK ZONES, AND THE PLACEMENT THEREOF, REFER TO THE TRAFFIC CONTROL STANDARDS, THE STANDARD SPECIFICATIONS FOR ROAD AND BRIDGE CONSTRUCTION, AND THE SPECIAL PROVISIONS.
- THE INITIAL TRAFFIC CONTROL SETUP AND SUBSEQUENT CHANGES BETWEEN TRAFFIC CONTROL STAGES SHALL BE PERFORMED DURING NON-PEAK TRAFFIC HOURS AS DIRECTED BY THE ENGINEER. FLAGGERS SHALL BE REQUIRED DURING THE INITIAL SETUP AND SUBSEQUENT CHANGES OF THE TRAFFIC CONTROL DEVICES AS DIRECTED BY THE ENGINEER.

## TRAFFIC CONTROL STANDARDS

THE FOLLOWING TRAFFIC CONTROL STANDARDS ARE THE MINIMUM REQUIREMENTS FOR THE TRAFFIC CONTROL FOR THIS PROJECT WHEN LANES ARE OPEN TO TRAFFIC:

STANDARD	APPLICATION
701301-04	SHORT TIME LANE CLOSURE FOR CONSTRUCTION LAYOUT, PAVEMENT MARKING, AND DEBRIS CLEAN UP, ETC.
701501-06	LANE CLOSURE FOR CONSTRUCTION ACTIVITIES.
701602-07	LANE CLOSURE FOR CONSTRUCTION ACTIVITIES.
701606-09	LANE CLOSURE FOR CONSTRUCTION ACTIVITIES.
701701-09	LANE CLOSURES AT INTERSECTION FOR CONSTRUCTION ACTIVITIES.
701801-05	SIDEWALK, CORNER OR CROSSWALK CLOSURE FOR CONSTRUCTION ACTIVITIES.
701901-03	TRAFFIC CONTROL DEVICES

## SUGGESTED SEQUENCE OF CONSTRUCTION

STAGE 1: EUREKA STREET AND NEIL STREET

- INSTALL PORTABLE CHANGEABLE MESSAGE SIGNS, SIGNING, AND TRAFFIC CONTROL DEVICES IN ACCORDANCE WITH DETAILS SHOWN IN THE APPLICABLE TRAFFIC CONTROL STANDARDS, AND AS DIRECTED BY THE ENGINEER.
- REMOVE CURB, SIDEWALK, AND PAVEMENTS.
- CONSTRUCT MEDIAN, CURB AND GUTTER, DRIVEWAYS, AND SIDEWALK.
- PERFORM NECESSARY LANDSCAPING.
- PERFORM PAVEMENT MARKING, AND SIGN REMOVAL AND INSTALLATION TO ACCOMPANY IMPROVEMENTS.
- PERFORM FINAL CLEAN UP WITHIN PROJECT LIMITS AND REMOVE ALL TRAFFIC CONTROL DEVICES.

STAGE 2: NEIL STREET FROM EDGEBROOK DRIVE TO KENYON ROAD

- INSTALL PORTABLE CHANGEABLE MESSAGE SIGNS, SIGNING, AND TRAFFIC CONTROL DEVICES IN ACCORDANCE WITH DETAILS SHOWN IN THE APPLICABLE TRAFFIC CONTROL STANDARDS, AND AS DIRECTED BY THE ENGINEER.
- REMOVE CURB AND PAVEMENTS.
- PERFORM STORM STEWER WORK AND INSTALL CONCRETE SLAB.
- CONSTRUCT CURB AND GUTTER, DRIVEWAYS, AND SIDEWALK.
- PERFORM NECESSARY LANDSCAPING.
- PERFORM FINAL CLEAN UP WITHIN PROJECT LIMITS AND REMOVE ALL TRAFFIC CONTROL DEVICES.

## TRAFFIC CONTROL BILL OF MATERIALS

CODE NUMBER	DESCRIPTION	UNIT	QUANTITY
40201000	AGGREGATE FOR TEMPORARY ACCESS	TON	1
70300520	PAVEMENT MARKING TAPE, TYPE III 4"	FOOT	100
70301000	WORK ZONE PAVEMENT MARKING REMOVAL	SQ FT	40
70186000	CHANGEABLE MESSAGE SIGN	CAL DAY	28
X7010216	TRAFFIC CONTROL AND PROTECTION (SPECIAL)	L SUM	1

NOTE: AN APPROXIMATE QUANTITY OF AGGREGATE FOR TEMPORARY ACCESS HAS BEEN INCLUDED FOR THIS WORK (SEE TRAFFIC CONTROL GENERAL NOTE 8).

FLAGMEN WILL NOT BE REQUIRED FOR TRUCK OR EQUIPMENT TRAFFIC ENTERING OR EXITING THE WORK ZONES WITH THE FOLLOWING EXCEPTIONS:

- FLAGMEN WILL BE REQUIRED AS SHOWN ON
- ALL PLAN DETAILS OR HIGHWAY STANDARDS

TRUCK TRAFFIC AND ALL OTHER CONSTRUCTION VEHICLES OR EQUIPMENT SHALL GIVE RIGHT OF WAY TO ALL OTHER VEHICULAR OR PEDESTRIAN TRAFFIC AND OBEY ALL TRAFFIC LAWS.

THE ENGINEER MAY REQUEST THAT FLAGMEN BE PROVIDED IF HE OR SHE DETERMINES UNSAFE CONDITIONS EXIST REQUIRING THE USE OF FLAGMEN. NO ADDITIONAL COMPENSATION WILL BE ALLOWED FOR THIS REQUIREMENT AND THE COST WILL BE INCLUDED IN THE CONTRACT LUMP SUM PRICE FOR TRAFFIC CONTROL AND PROTECTION, SPECIAL.

FILE NAME :  
p:\c0010640\_champaign - Stratton Safe School Routes\Plans\sheet110mt.dgn  
PLOT DATE :  
3/9/2014 1:52:33 PM

DESIGNED -	K.L.R.	REVISED -	
DRAWN -	K.L.R.	REVISED -	
CHECKED -	S.M.W.	REVISED -	
DATE -	02-2014	REVISED -	

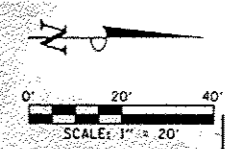
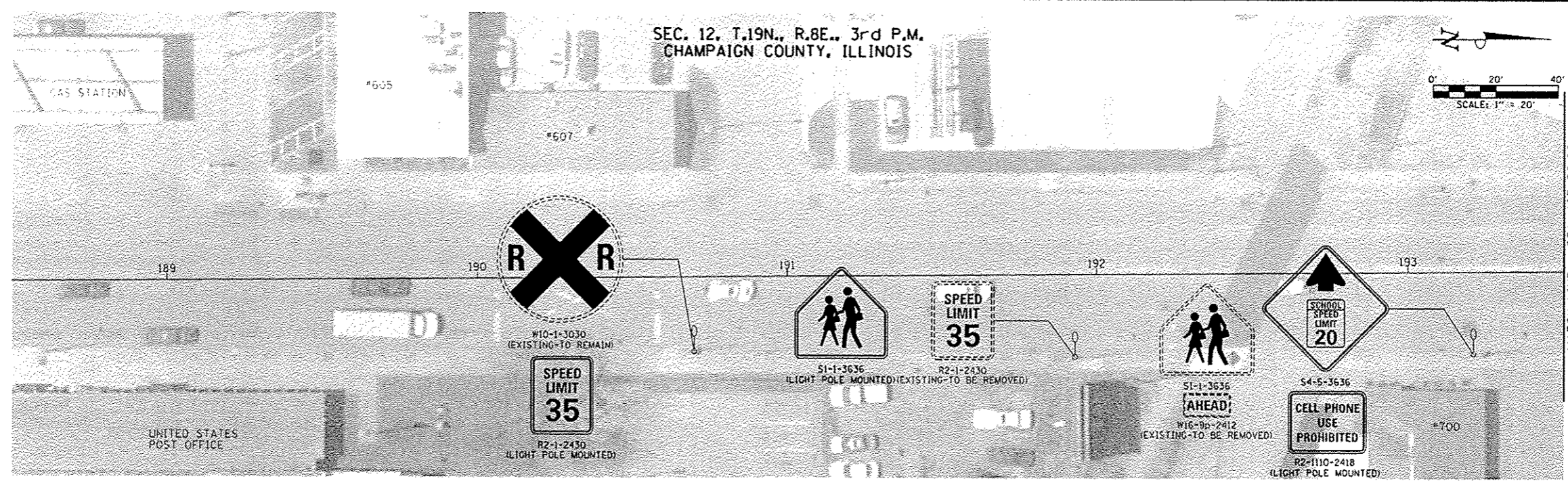
STATE OF ILLINOIS  
DEPARTMENT OF TRANSPORTATION

TRAFFIC CONTROL PLAN

SCALE : NONE SHEET NO. 12 OF 20 SHEETS STA. TO STA.

F.A.P. RTE.	SECTION	COUNTY	TOTAL SHEETS	SHEET NO.
806	12-00293-00-SP	CHAMPAIGN	20	12
CONTRACT NO. 91486				
FED. ROAD DIST. NO.		ILLINOIS FED. AID PROJECT		

SEC. 12, T.19N., R.8E., 3rd P.M.  
CHAMPAIGN COUNTY, ILLINOIS



MATCH LINE - STA. 193+50.00

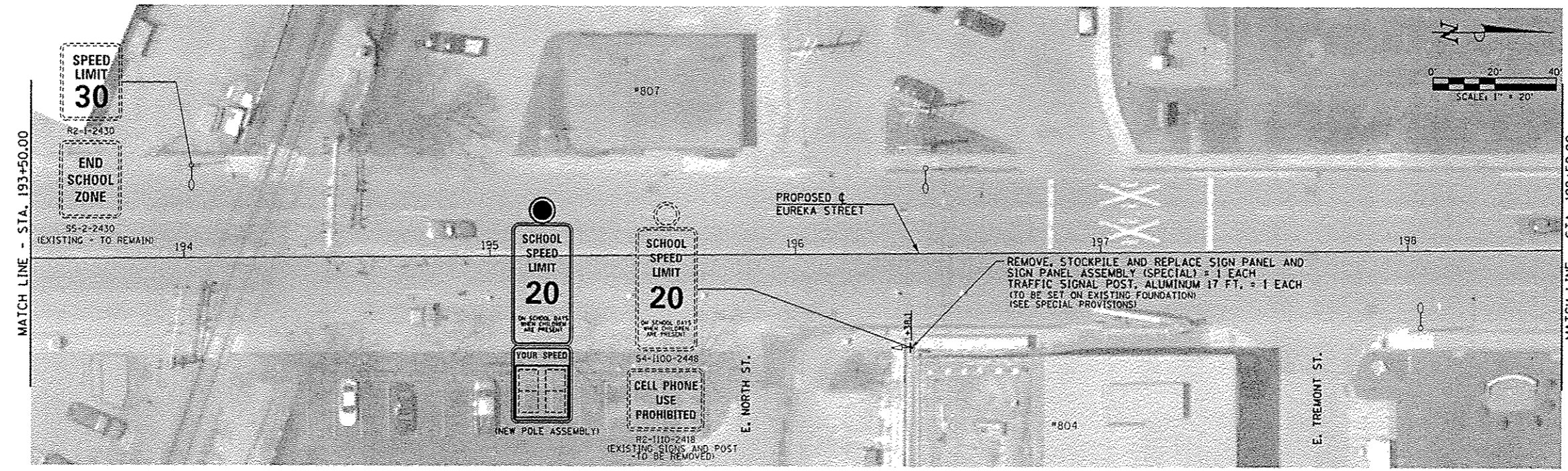
TYPICAL PAVEMENT MARKING LEGEND			
1 4" SOLID/SKIP-DASH YELLOW*	7 12" DIAGONAL (WHITE)*		
2 4" DOUBLE YELLOW*	8 6" CROSSWALK (WHITE)		
3 12" DIAGONAL (YELLOW)*	9 12" CROSSWALK (WHITE)		
4 4" SOLID WHITE*	10 24" STOP BAR (WHITE)		
5 6" SOLID WHITE*	11 4" LANE LINE EXTENSIONS (WHITE)*		
6 6" LANE LINE EXTENSIONS (WHITE)*		*NOT USED	

URETHANE PAVEMENT MARKINGS SHALL BE USED ON ALL P.C. CONCRETE SURFACES. THERMOPLASTIC PAVEMENT MARKINGS SHALL BE USED ON ALL HOT-MIX ASPHALT SURFACES.

SIGN PANEL TYPE 1 72000100	
LOCATION	SO FT
STA. 190+70.0, 24.0' RT.	5.0
STA. 191+93.0, 26.0' RT.	6.75
STA. 193+20.7, 26.4' RT.	12.0
<b>SHEET TOTAL</b>	<b>23.75</b>

**PAVEMENT MARKING AND SIGNING NOTES:**

- SEE SPECIAL PROVISIONS FOR SPECIAL SIGN REQUIREMENTS FOR REMOVAL OF POLE FOUNDATION, SOLAR-POWERED FLASHING BEACON ASSEMBLY (COMPLETE), AND REMOVE, STOCKPILE, AND REPLACE SIGN PANEL AND SIGN PANEL ASSEMBLY (SPECIAL)
- THE CONTRACTOR SHALL BE RESPONSIBLE FOR REMOVING, STORING, AND RESETTING ALL EXISTING SIGNS AND POSTS AS NOTED ON THE PLANS OR AS DIRECTED BY THE ENGINEER. SIGNS CALLED OUT ON THE PLANS TO BE REMOVED SHALL NOT BE RETURNED TO THE CITY OF CHAMPAIGN UNLESS OTHERWISE DIRECTED BY THE ENGINEER. THIS WORK WILL NOT BE PAID FOR SEPARATELY BUT SHALL BE INCLUDED IN THE COST OF THE VARIOUS REMOVAL PAY ITEMS, AND NO ADDITIONAL COMPENSATION WILL BE ALLOWED.



MATCH LINE - STA. 198+50.00

FILE NAME = p:\0010640\_Champaign - Stratton Safe School Routes\Plans\sheet\11pvtmkg.dgn  
PLOT DATE = 3/9/2014 1:52:34 PM

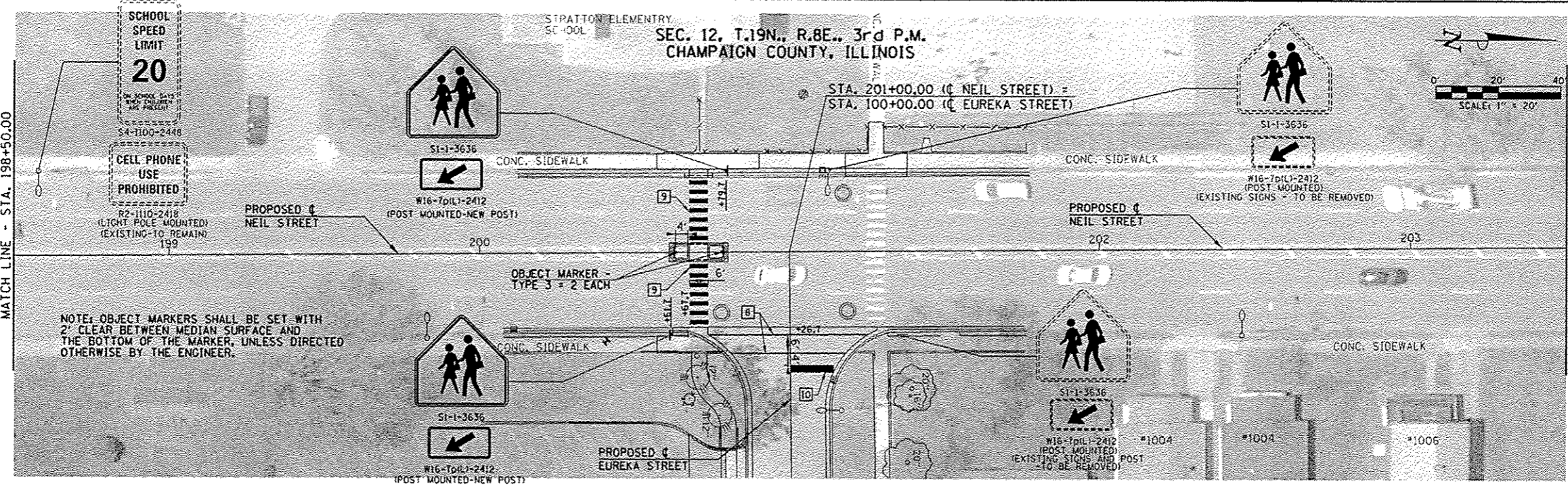
DESIGNED - K.L.R.	REVISED -
DRAWN - K.L.R.	REVISED -
CHECKED - S.M.W.	REVISED -
DATE - 02-2014	REVISED -

STATE OF ILLINOIS  
DEPARTMENT OF TRANSPORTATION

**NEIL STREET - PAVEMENT MARKING AND SIGNING PLAN**

SCALE: 1"=20' SHEET NO. 13 OF 20 SHEETS STA. TO STA.

F.A.P. RTE.	SECTION	COUNTY	TOTAL SHEETS	SHEET NO.
806	12-00293-00-SP	CHAMPAIGN	20	13
CONTRACT NO. 91486				
FED. ROAD DIST. NO.		ILLINOIS FED. AID PROJECT		



NOTE: OBJECT MARKERS SHALL BE SET WITH 2" CLEAR BETWEEN MEDIAN SURFACE AND THE BOTTOM OF THE MARKER, UNLESS DIRECTED OTHERWISE BY THE ENGINEER.

**TYPICAL PAVEMENT MARKING LEGEND**

1 4" SOLID/SKIP-DASH YELLOW*	7 12" DIAGONAL (WHITE)*
2 4" DOUBLE YELLOW*	8 6" CROSSWALK (WHITE)
3 12" DIAGONAL (YELLOW)*	9 12" CROSSWALK (WHITE)
4 4" SOLID WHITE*	10 24" STOP BAR (WHITE)
5 6" SOLID WHITE*	11 4" LANE LINE EXTENSIONS (WHITE)*
6 6" LANE LINE EXTENSIONS (WHITE)*	

\*NOT USED

URETHANE PAVEMENT MARKINGS SHALL BE USED ON ALL P.C. CONCRETE SURFACES. THERMOPLASTIC PAVEMENT MARKINGS SHALL BE USED ON ALL HOT-MIX ASPHALT SURFACES.

**SIGN PANEL TYPE 1**  
72000100

LOCATION	SO FT
STA. 200+61.7, 26.6' RT.	8.75
STA. 200+79.7, 26.2' RT.	8.75
STA. 206+76.5, 35.0' RT.	10.0
STA. 207+30.0, 38.0' RT.	12.0

SHEET TOTAL 39.5

**TELESCOPING STEEL SIGN SUPPORT**  
72800100

LOCATION	EACH
200+61.7, 26.6' RT.	14
SOUTH END OF MEDIAN	9
NORTH END OF MEDIAN	9
200+79.7, 26.2' LT.	15
207+30.0, 38.0' LT.	15

SHEET TOTAL 62

**THERMOPLASTIC PAVEMENT MARKING LINE, 12" (78000600)**

LOCATION	CROSSWALK WHITE (FOOT)	TOTAL (FOOT)
200+67.7 LT.&RT.	84.0	84.0

SHEET TOTAL 84.0

**MODIFIED URETHANE PAVEMENT MARKING LINE, 6" (78008330)**

LOCATION	CROSSWALK WHITE (FOOT)	TOTAL (FOOT)
STA. 200+67.7 LT.&RT.	52.0	52.0
STA. 200+73.7 LT.&RT.	37.0	37.0

SHEET TOTAL 89.0

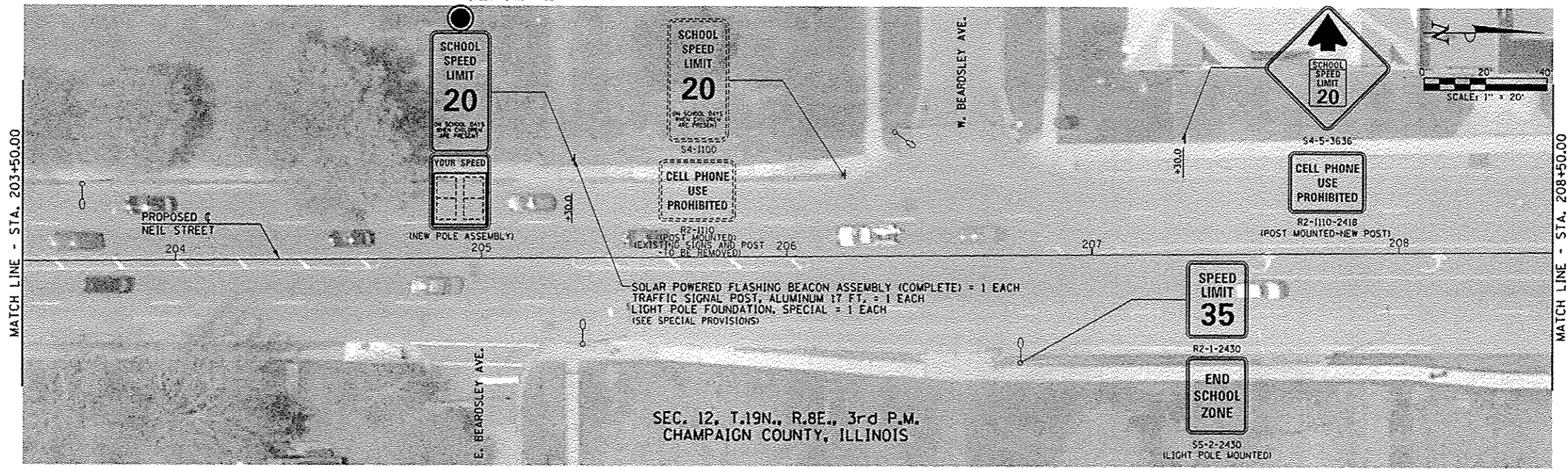
**MODIFIED URETHANE PAVEMENT MARKING LINE, 24" (78008370)**

LOCATION	STOP BAR (FOOT)	TOTAL (FOOT)
STA. 100+36.7 @-LT.	14.0	14.0

SHEET TOTAL 14.0

**PAVEMENT MARKING AND SIGNING NOTES:**

- SEE SPECIAL PROVISIONS FOR SPECIAL SIGN REQUIREMENTS FOR REMOVAL OF POLE FOUNDATION, SOLAR-POWERED FLASHING BEACON ASSEMBLY (COMPLETE), AND REMOVE, STOCKPILE, AND REPLACE SIGN PANEL AND SIGN PANEL ASSEMBLY (SPECIAL)
- THE CONTRACTOR SHALL BE RESPONSIBLE FOR REMOVING, STORING, AND RESETTING ALL EXISTING SIGNS AND POSTS AS NOTED ON THE PLANS OR AS DIRECTED BY THE ENGINEER. SIGNS CALLED OUT ON THE PLANS TO BE REMOVED SHALL NOT BE RETURNED TO THE CITY OF CHAMPAIGN UNLESS OTHERWISE DIRECTED BY THE ENGINEER. THIS WORK WILL NOT BE PAID FOR SEPARATELY BUT SHALL BE INCLUDED IN THE COST OF THE VARIOUS REMOVAL PAY ITEMS, AND NO ADDITIONAL COMPENSATION WILL BE ALLOWED.



SOLAR-POWERED FLASHING BEACON ASSEMBLY (COMPLETE) = 1 EACH  
TRAFFIC SIGNAL POST, ALUMINUM 17 FT. = 1 EACH  
LIGHT POLE FOUNDATION, SPECIAL = 1 EACH  
(SEE SPECIAL PROVISIONS)

FILE NAME = p:\0010640\_Champaign - Stratton Safe School Routes\Plans\shots\11pvtmktg.dgn  
DESIGNED - K.L.R.  
DRAWN - K.L.R.  
CHECKED - S.M.W.  
DATE - 02-2014

DESIGNED - K.L.R.	REVISED -
DRAWN - K.L.R.	REVISED -
CHECKED - S.M.W.	REVISED -
DATE - 02-2014	REVISED -

STATE OF ILLINOIS  
DEPARTMENT OF TRANSPORTATION

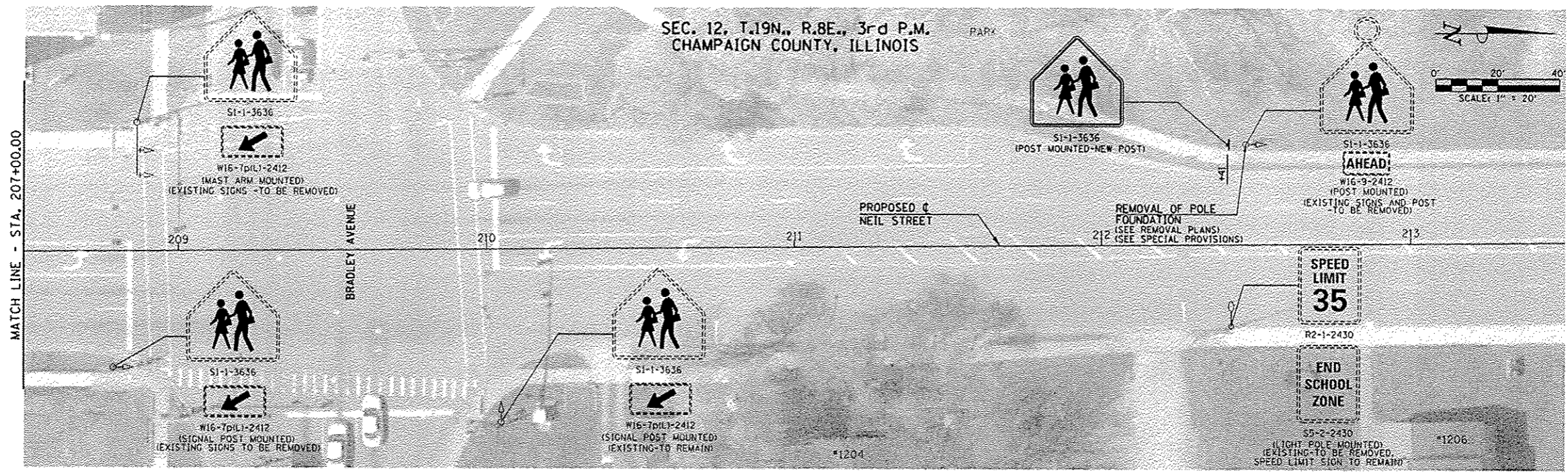
**NEIL STREET - PAVEMENT MARKING AND SIGNING PLAN**

SCALE: 1"=20' SHEET NO. 14 OF 20 SHEETS STA. TO STA.

F.A.P. RTE.	SECTION	COUNTY	TOTAL SHEETS	SHEET NO.
806	12-00293-00-SP	CHAMPAIGN	20	14

CONTRACT NO. 91486  
ILLINOIS FED. AID PROJECT

SEC. 12, T.19N., R.8E., 3rd P.M.  
CHAMPAIGN COUNTY, ILLINOIS

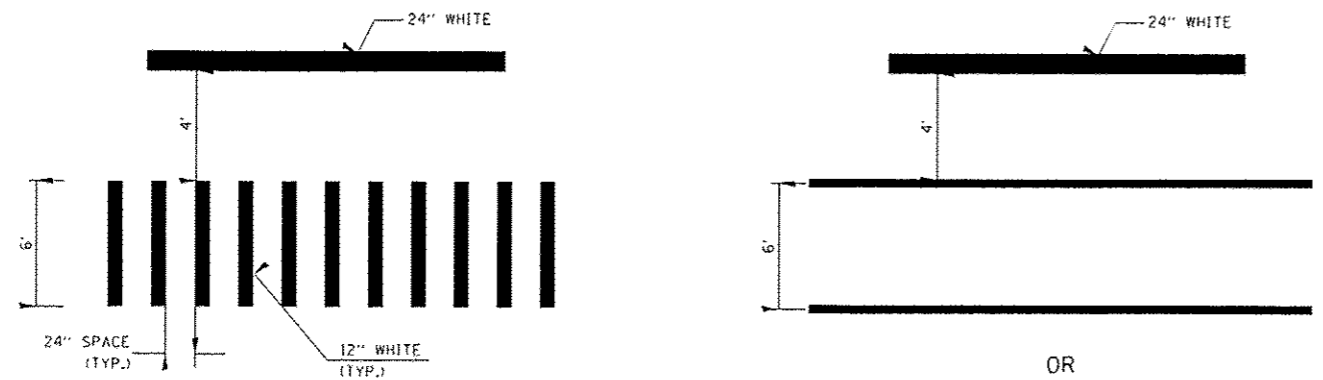


TYPICAL PAVEMENT MARKING LEGEND	
1 4" SOLID/SKIP-DASH YELLOW*	7 12" DIAGONAL (WHITE)*
2 4" DOUBLE YELLOW*	8 6" CROSSWALK (WHITE)
3 12" DIAGONAL (YELLOW)*	9 12" CROSSWALK (WHITE)
4 4" SOLID WHITE*	10 24" STOP BAR (WHITE)
5 6" SOLID WHITE*	11 4" LANE LINE EXTENSIONS (WHITE)*
6 6" LANE LINE EXTENSIONS (WHITE)*	*NOT USED

SIGN PANEL TYPE 1 72000100	
LOCATION	SO. FT.
STA. 212+41.0, 32.0' LT.	6.75
SHEET TOTAL 6.75	

TELESCOPING STEEL SIGN SUPPORT 72800100	
LOCATION	EACH
STA. 212+41.0, 32.0' LT.	16
SHEET TOTAL 16	

URETHANE PAVEMENT MARKINGS SHALL BE USED ON ALL P.C. CONCRETE SURFACES. THERMOPLASTIC PAVEMENT MARKINGS SHALL BE USED ON ALL HOT-MIX ASPHALT SURFACES.



TYPICAL SPACING FOR  
CROSSWALKS & STOP BARS

**PAVEMENT MARKING AND SIGNING NOTES:**

- SEE SPECIAL PROVISIONS FOR SPECIAL SIGN REQUIREMENTS FOR REMOVAL OF POLE FOUNDATION, SOLAR-POWERED FLASHING BEACON ASSEMBLY (COMPLETE), AND REMOVE, STOCKPILE, AND REPLACE SIGN PANEL AND SIGN PANEL ASSEMBLY (SPECIAL)
- THE CONTRACTOR SHALL BE RESPONSIBLE FOR REMOVING, STORING, AND RESETTING ALL EXISTING SIGNS AND POSTS AS NOTED ON THE PLANS OR AS DIRECTED BY THE ENGINEER. SIGNS CALLED OUT ON THE PLANS TO BE REMOVED SHALL NOT BE RETURNED TO THE CITY OF CHAMPAIGN UNLESS OTHERWISE DIRECTED BY THE ENGINEER. THIS WORK WILL NOT BE PAID FOR SEPARATELY BUT SHALL BE INCLUDED IN THE COST OF THE VARIOUS REMOVAL PAY ITEMS, AND NO ADDITIONAL COMPENSATION WILL BE ALLOWED.

FILE NAME = p:\0010640\_Champaign - Stratton Safe School Routes\Plans\Sheets\11pvtmkp.dgn  
PLOT DATE = 3/9/2014 1:52:59 PM

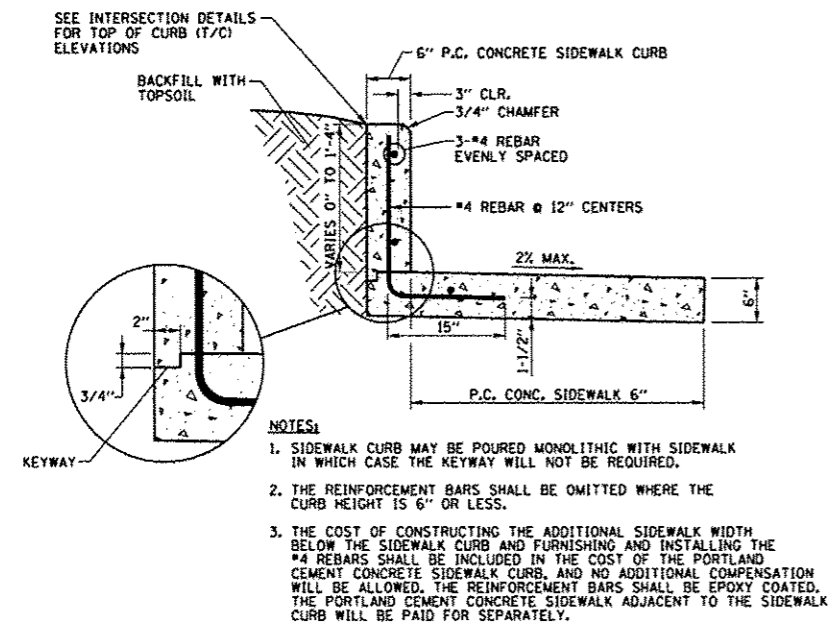
DESIGNED - K.L.R.	REVISED -
DRAWN - K.L.R.	REVISED -
CHECKED - S.M.W.	REVISED -
DATE - 02-2014	REVISED -

STATE OF ILLINOIS  
DEPARTMENT OF TRANSPORTATION

**NEIL STREET - PAVEMENT MARKING  
AND SIGNING PLAN**

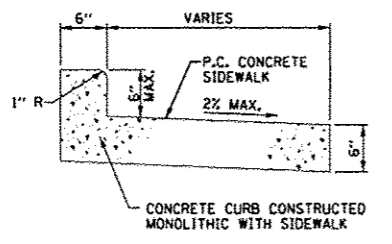
SCALE: 1"=20' SHEET NO. 15 OF 20 SHEETS STA. TO STA.

F.A.P. RTE.	SECTION	COUNTY	TOTAL SHEETS	SHEET NO.
806	12-00293-00-SP	CHAMPAIGN	20	15
FED. ROAD DIST. NO.			ILLINOIS FED. AID PROJECT	
			CONTRACT NO. 91486	



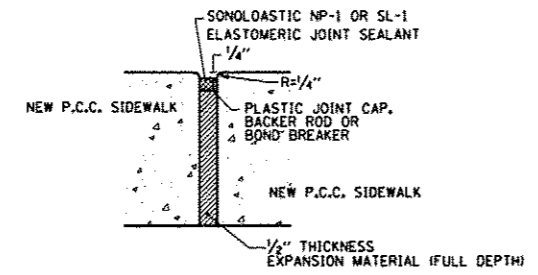
- NOTES:**
1. SIDEWALK CURB MAY BE POURED MONOLITHIC WITH SIDEWALK IN WHICH CASE THE KEYWAY WILL NOT BE REQUIRED.
  2. THE REINFORCEMENT BARS SHALL BE OMITTED WHERE THE CURB HEIGHT IS 6" OR LESS.
  3. THE COST OF CONSTRUCTING THE ADDITIONAL SIDEWALK WIDTH BELOW THE SIDEWALK CURB AND FURNISHING AND INSTALLING THE #4 REBARS SHALL BE INCLUDED IN THE COST OF THE PORTLAND CEMENT CONCRETE SIDEWALK CURB, AND NO ADDITIONAL COMPENSATION WILL BE ALLOWED. THE REINFORCEMENT BARS SHALL BE EPOXY COATED. THE PORTLAND CEMENT CONCRETE SIDEWALK ADJACENT TO THE SIDEWALK CURB WILL BE PAID FOR SEPARATELY.

**P.C. CONCRETE SIDEWALK CURB DETAIL**

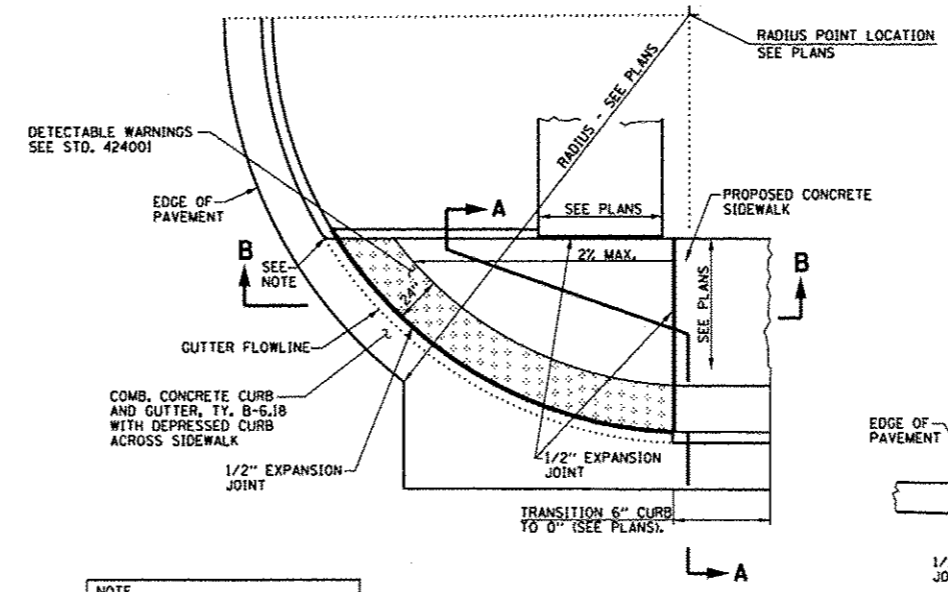


- NOTE:**  
THIS WORK WILL BE PAID FOR AS P.C. CONC. SIDEWALK 6", AT THE CONTRACT UNIT PRICE PER SQUARE FOOT OF TOP SURFACE AREA INCLUDING THE TOP SURFACE AREA OF THE CURB. THE COST OF CONSTRUCTING THE CURB TO THE HEIGHT SHOWN SHALL BE INCLUDED IN THE COST OF THE SIDEWALK.

**SIDEWALK MONOLITHIC CURB DETAIL**

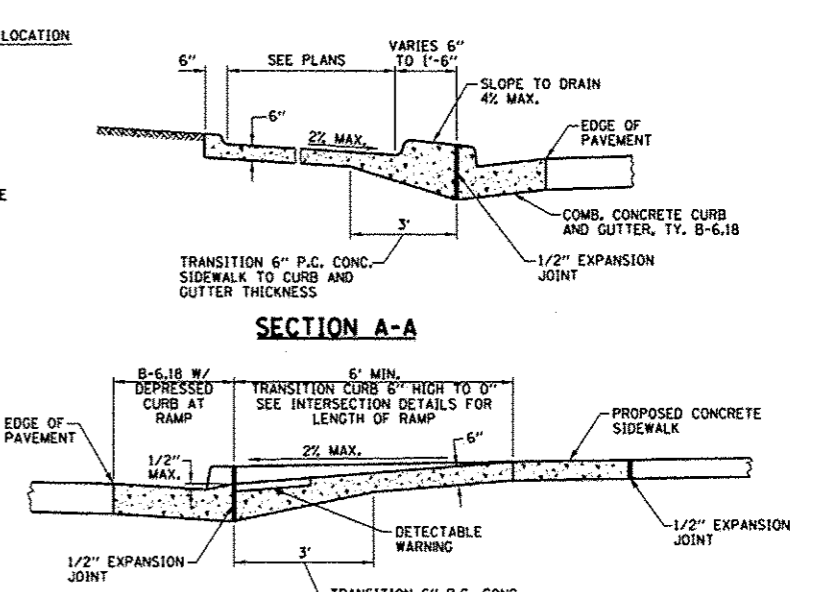


**TRANSVERSE EXPANSION JOINT DETAIL**



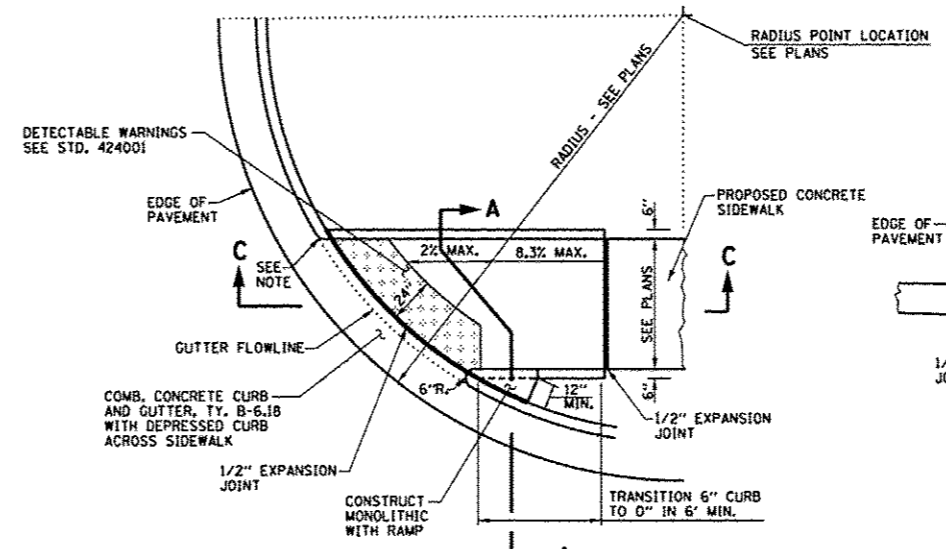
- NOTE:**  
2'R WHEN RAMP IS SKEWED TO EDGE OF PAVEMENT.  
6'R WHEN RAMP IS PERPENDICULAR TO EDGE OF PAVEMENT.

**PLAN (NEIL ST. AND EUREKA ST.)**

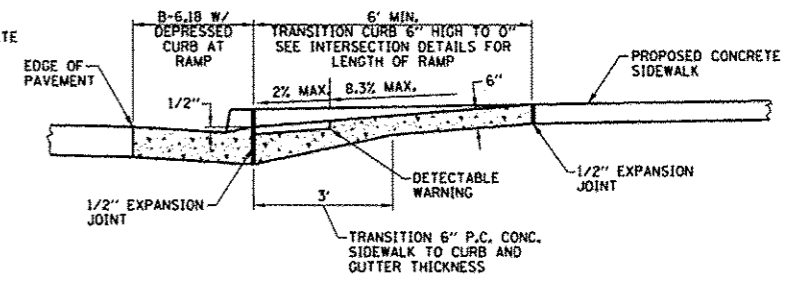


**SECTION A-A**

**SECTION B-B**



**PLAN (NW NEIL ST. AND EDGEBROOK DR.)**



**SECTION C-C**

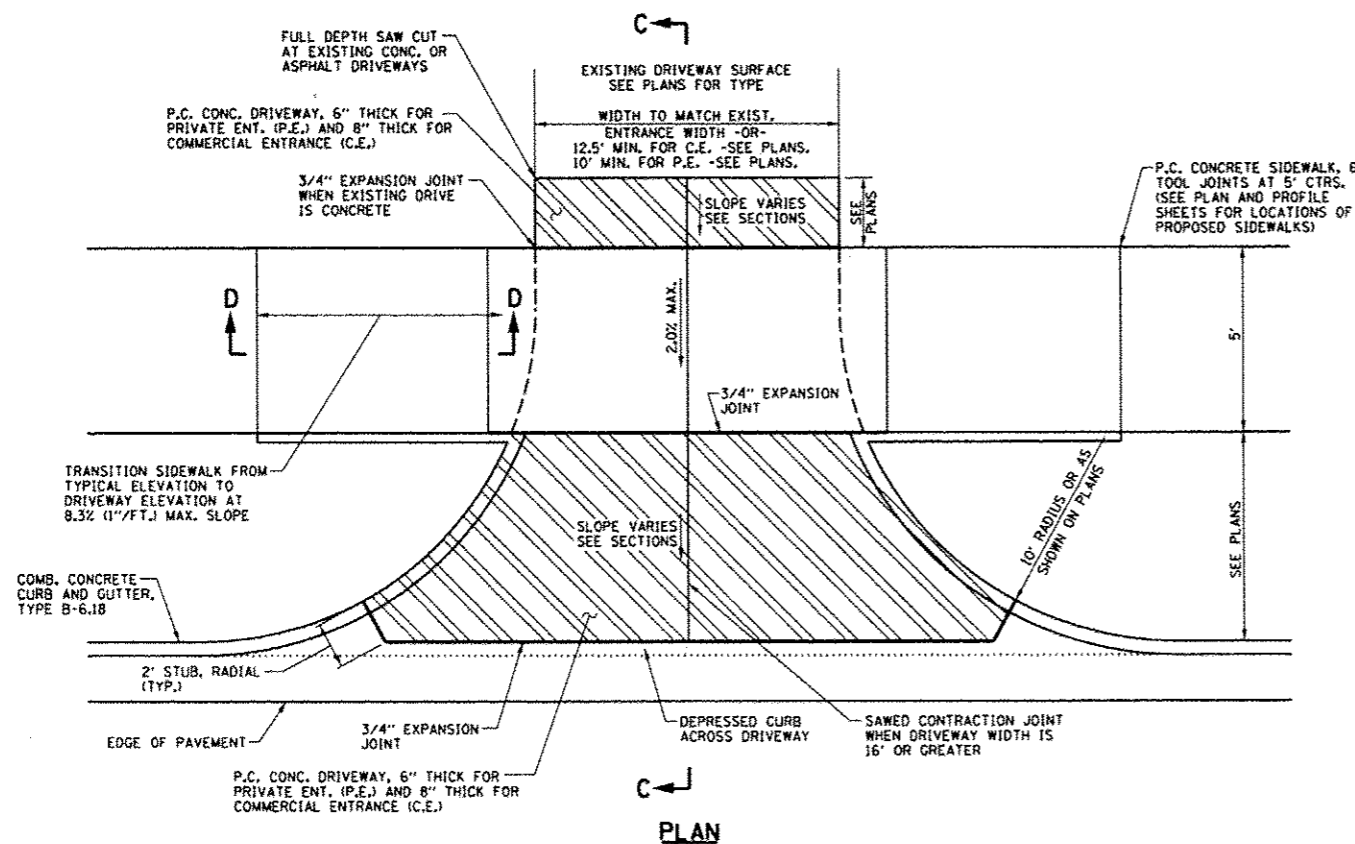
**SIDEWALK GENERAL NOTES**

- SEE STANDARD 424001 FOR ADDITIONAL DETAILS OF PERPENDICULAR CURB RAMPS FOR SIDEWALKS.
- THE COST OF CONSTRUCTING THE DEPRESSED CURB AS SHOWN SHALL BE CONSIDERED INCLUDED IN THE COST OF CONSTRUCTING COMBINATION CONCRETE CURB AND GUTTER AND NO ADDITIONAL COMPENSATION WILL BE ALLOWED.
- THE COST OF FURNISHING AND INSTALLING THE 1/2" EXPANSION JOINTS AND THE COST OF CONSTRUCTING THE P.C.C. SIDEWALK THICKNESS TRANSITION, INCLUDING THE ADJACENT CURBING AS SHOWN, SHALL BE INCLUDED IN THE COST OF CONSTRUCTING P.C. CONCRETE SIDEWALK 6" AND NO ADDITIONAL COMPENSATION WILL BE ALLOWED.
- THE DETECTABLE WARNINGS SHALL HAVE A CONTRASTING COLOR APPROVED BY THE ENGINEER AND SHALL BE CONSTRUCTED IN ACCORDANCE WITH STANDARD 424001 AND THE STANDARD SPECIFICATIONS. THE DETECTABLE WARNINGS WILL BE PAID FOR AT THE CONTRACT UNIT PRICE PER SQUARE FOOT FOR DETECTABLE WARNINGS.
- WHEN PREFABRICATED DETECTABLE WARNING PRODUCTS ARE USED THE SIDEWALK RAMP BELOW THE DETECTABLE WARNING UNITS SHALL BE A MINIMUM OF 4" THICK.
- THE NORMAL CROSS SLOPES OF SIDEWALKS SHALL BE 2.0% EXCEPT AT THE RAMP LOCATIONS.
- TRANSVERSE SAWED OR TOOLED JOINTS SHALL BE PLACED AT 5' CENTERS IN THE SIDEWALKS. 1/2" EXPANSION JOINTS SHALL BE PLACED WHERE SIDEWALKS INTERSECT CONCRETE CURB AND GUTTERS.

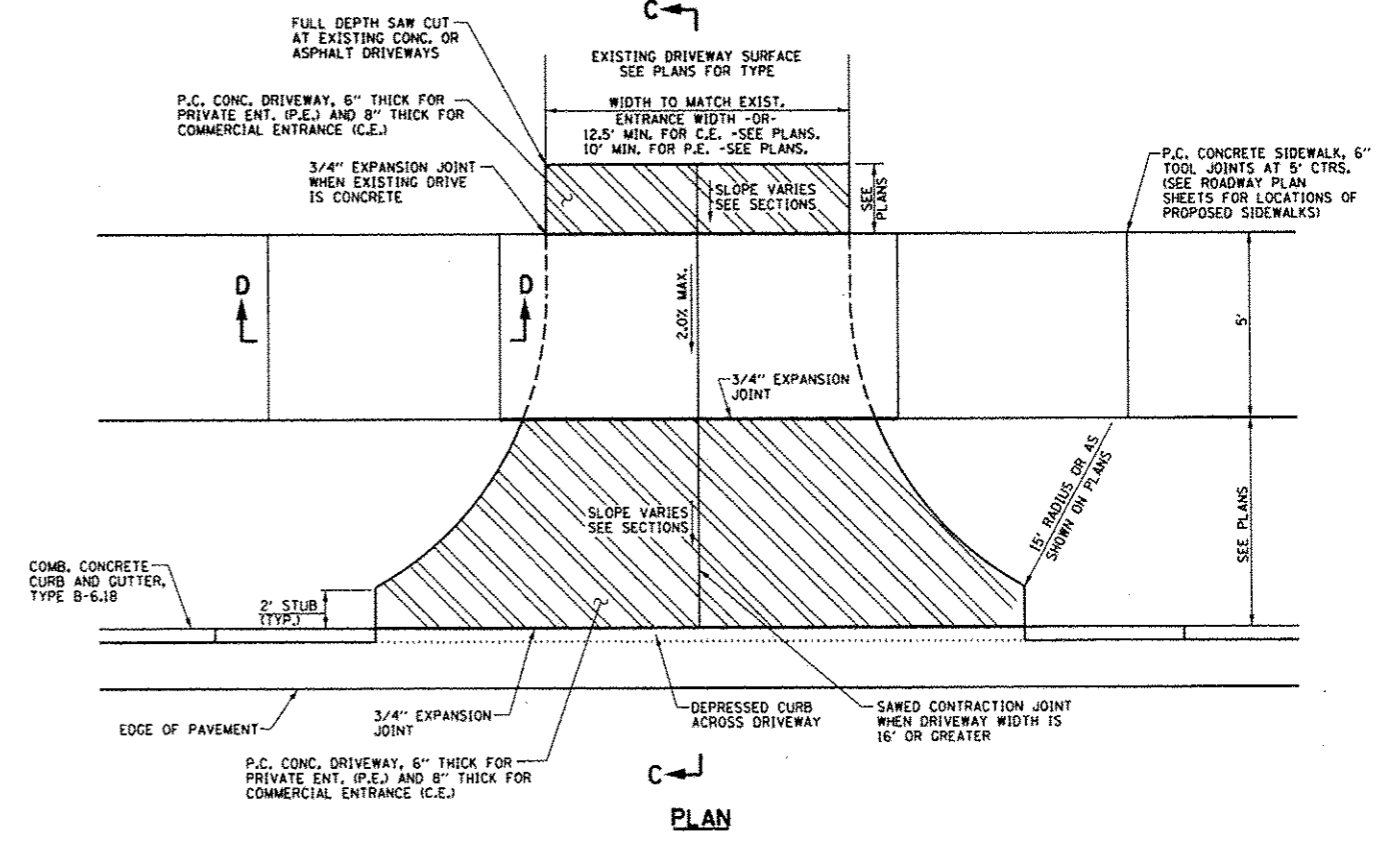
**P.C. CONCRETE SIDEWALK RAMP DETAILS**

FILE NAME = p:\CD010640_Champaign - Stratton Safe School Routes\Plans\sheet\12miscdetalls.dgn	DESIGNED - K.L.R.	REVISED -	STATE OF ILLINOIS DEPARTMENT OF TRANSPORTATION	MISCELLANEOUS DETAILS		F.A.P. RTE. 806	SECTION 12-00293-00-SP	COUNTY CHAMPAIGN	TOTAL SHEETS 20	SHEET NO. 16		
PLOT DATE = 3/17/2014 9:43:47 AM	DRAWN - K.L.R.	REVISED -				SCALE : NONE	SHEET NO. 16 OF 20 SHEETS	STA. TO STA.	FED. ROAD DIST. NO. [ILLINOIS] FED. AID PROJECT			
	CHECKED - S.M.W.	REVISED -							CONTRACT NO. 91486			
	DATE - 02-2014	REVISED -										

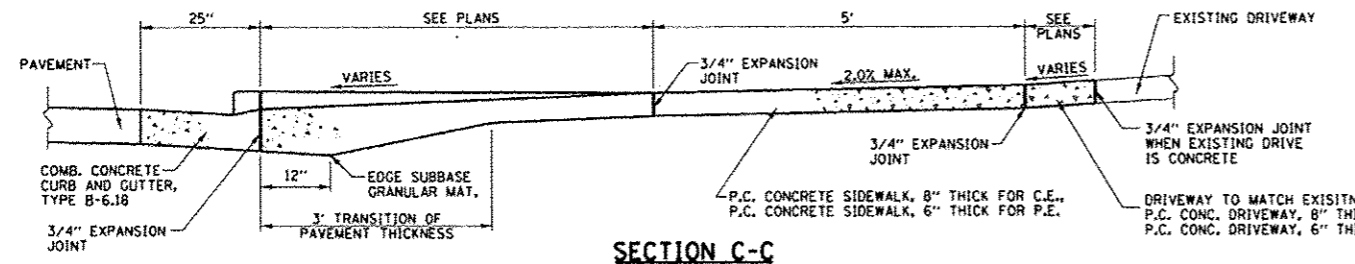




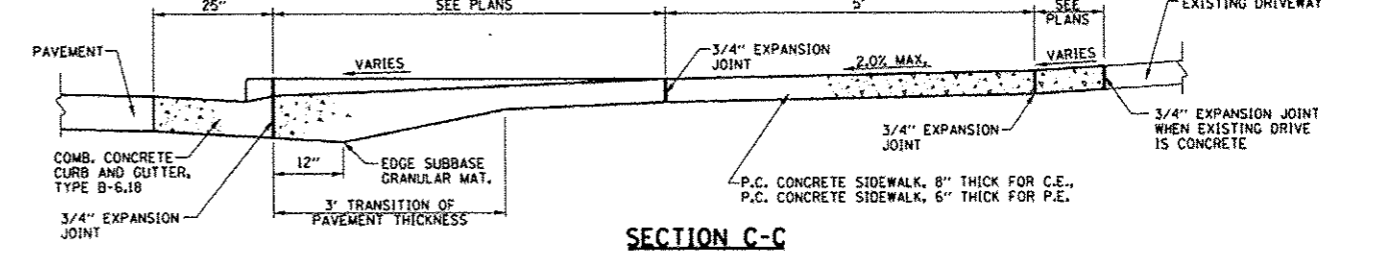
PLAN



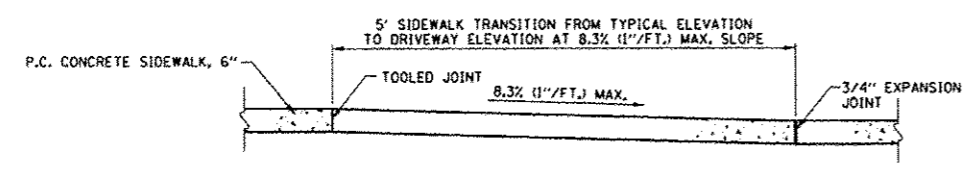
PLAN



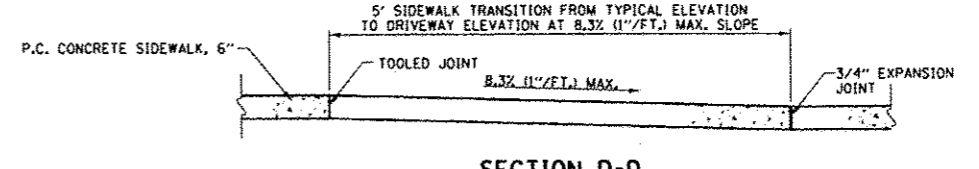
SECTION C-C



SECTION C-C



SECTION D-D



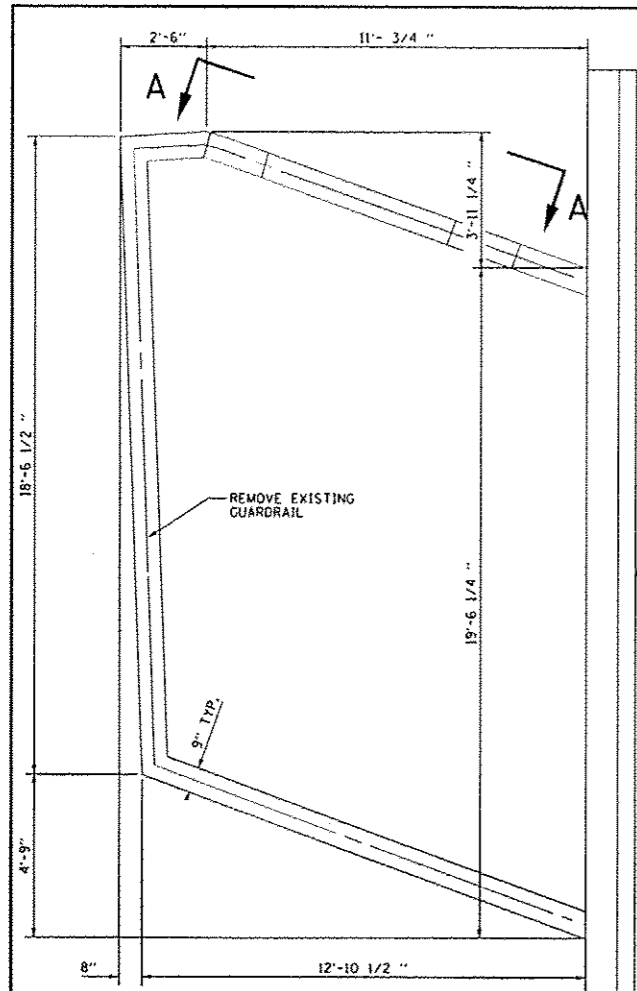
SECTION D-D

**P.C.C. DRIVEWAY PAVEMENT GENERAL NOTES**

- THE COST OF CONSTRUCTING THE DEPRESSED CURB INCLUDING THE 2' STUB AS SHOWN SHALL BE CONSIDERED INCLUDED IN THE COST OF CONSTRUCTING THE COMBINATION CONCRETE CURB AND GUTTER TYPE B-6.18 AND NO ADDITIONAL COMPENSATION WILL BE ALLOWED.
- THE COST OF FURNISHING AND INSTALLING THE 3/4" EXPANSION JOINTS AND THE COST OF CONSTRUCTING THE P.C. CONCRETE DRIVEWAY THICKNESS TRANSITION, INCLUDING THE ADJACENT CURBING AS SHOWN, SHALL BE INCLUDED IN THE COST OF CONSTRUCTING P.C. CONCRETE DRIVEWAY AND NO ADDITIONAL COMPENSATION WILL BE ALLOWED.
- THE NORMAL CROSS SLOPES OF SIDEWALKS SHALL BE 2.0% EXCEPT AT THE RAMP LOCATIONS.
- THE COST OF CONSTRUCTING THE P.C. CONCRETE DRIVEWAY PAVEMENT THICKER ADJACENT TO THE GUTTER AS SHOWN IN SECTION A-A WILL BE CONSIDERED INCLUDED IN THE COST OF THE P.C. CONCRETE DRIVEWAY PAVEMENT AND NO ADDITIONAL COMPENSATION WILL BE ALLOWED.
- THE COST OF CONSTRUCTING THE P.C. CONCRETE SIDEWALK 8" THICK THROUGH DRIVEWAYS SHALL BE CONSIDERED INCLUDED IN THE COST OF P.C. CONCRETE SIDEWALK 6" AND NO ADDITIONAL COMPENSATION WILL BE ALLOWED.
- WHEN THE WIDTH OF THE P.C. CONCRETE DRIVEWAY PAVEMENT IS BETWEEN 12' AND 24' A CONTRACTION JOINT SHALL BE PLACED AT THE CENTER OF THE DRIVEWAY. WHEN THE WIDTH OF THE P.C. CONCRETE DRIVEWAY PAVEMENT IS BETWEEN 24' TO 35', TWO CONTRACTION JOINTS EVENLY SPACED SHALL BE PLACED IN THE DRIVEWAY. TRANSVERSE CONTRACTION JOINTS SHALL BE PLACED AT 12' MAXIMUM SPACING.

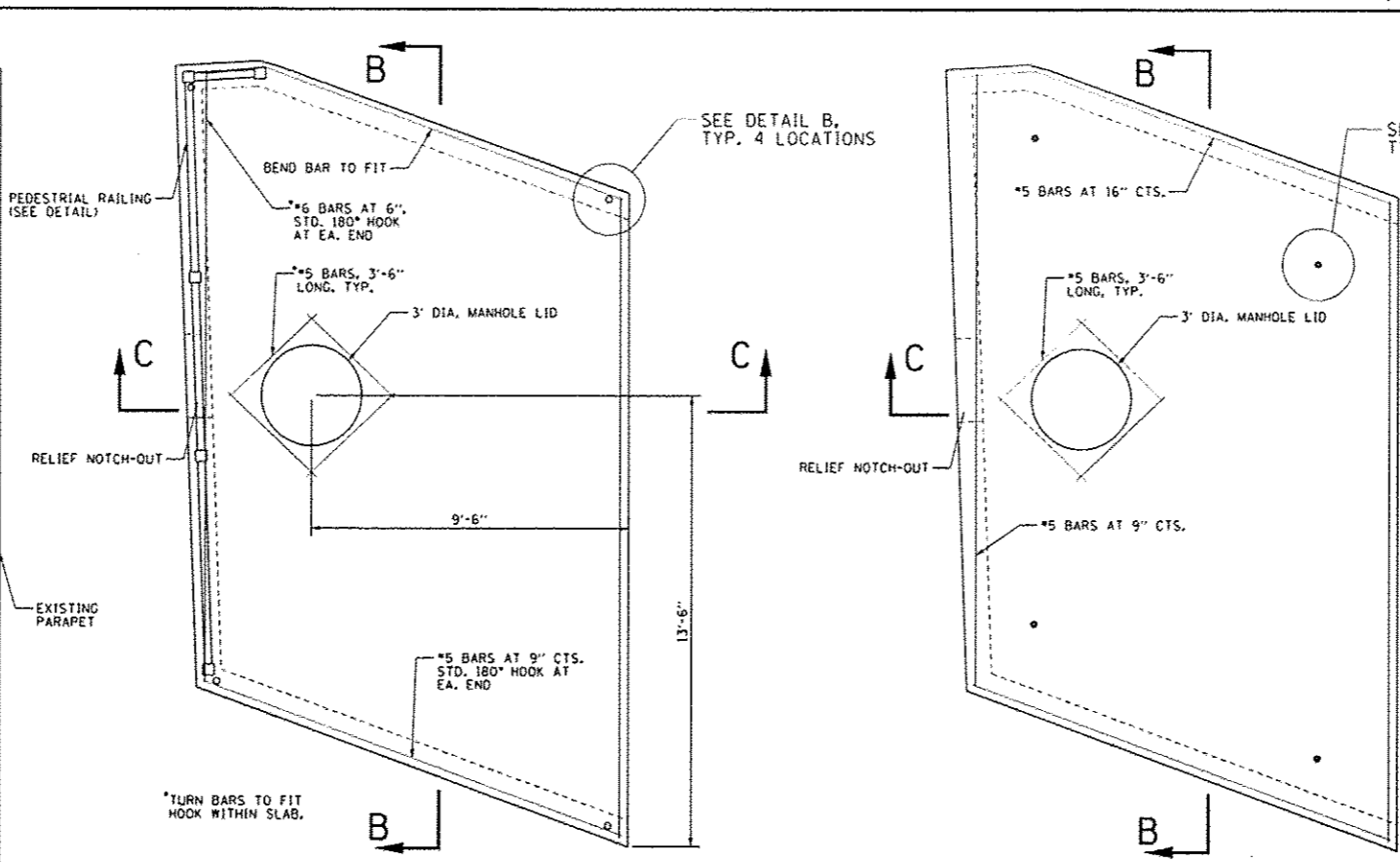
**P.C. CONCRETE DRIVEWAY DETAIL  
ADJACENT TO COMB. CONC. CURB & GUTTER, TYPE B-6.18  
(PRIVATE AND COMMERCIAL ENTRANCES)**

FILE NAME = p:\0010640_Champaign - Stratton Safe School Route\Plans\sheet\12miscdetail1.dgn	DESIGNED - K.J.R.	REVISED -	STATE OF ILLINOIS DEPARTMENT OF TRANSPORTATION	MISCELLANEOUS DETAILS	F.A.P. RTE.	SECTION	COUNTY	TOTAL SHEETS	SHEET NO.
	DRAWN - K.J.R.	REVISED -			B06	12-00293-00-5P	CHAMPAIGN	20	17
PLOT DATE = 3/13/2014 6:25:22 AM	CHECKED - S.M.W.	REVISED -	SCALE : NONE	SHEET NO. 17 OF 20 SHEETS	STA.	TO STA.	CONTRACT NO. 91486		
	DATE - 02-2014	REVISED -			FED. ROAD DIST. NO.	ILLINOIS FED. AID PROJECT			



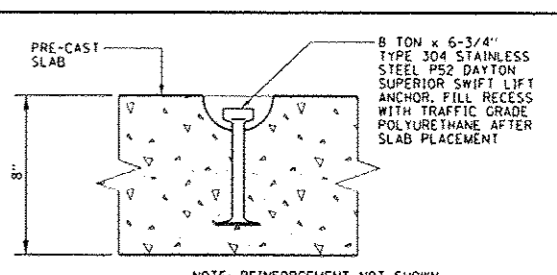
**NOTE:**  
ALL DIMENSIONS ARE APPROXIMATE. VERIFY IN FIELD ALL DIMENSIONS PRIOR TO PREPARATION OF SHOP DRAWINGS AND FABRICATION OF PRECAST SLAB.

**EXISTING BOX CULVERT PLAN**

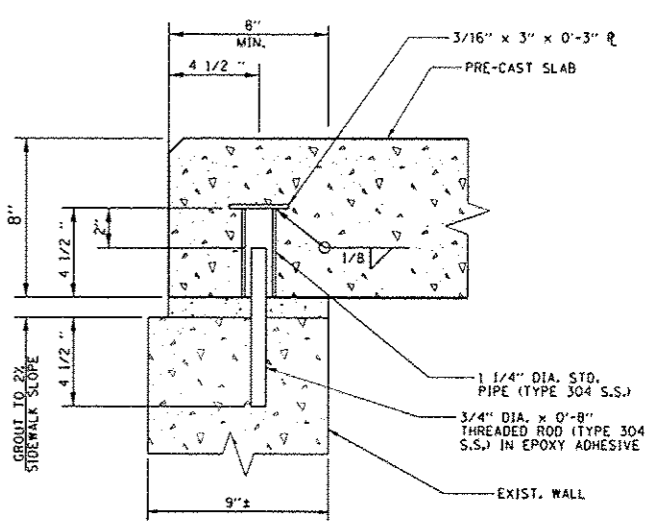


**BOTTOM REINFORCEMENT PROPOSED TOP SLAB PLAN**

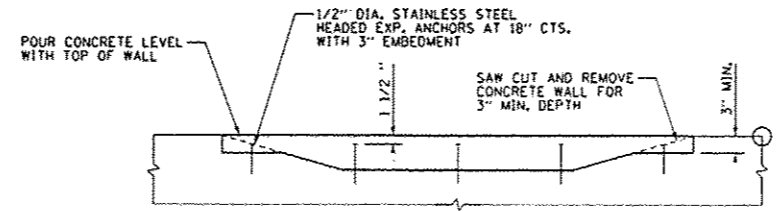
**TOP REINFORCEMENT PROPOSED TOP SLAB PLAN**



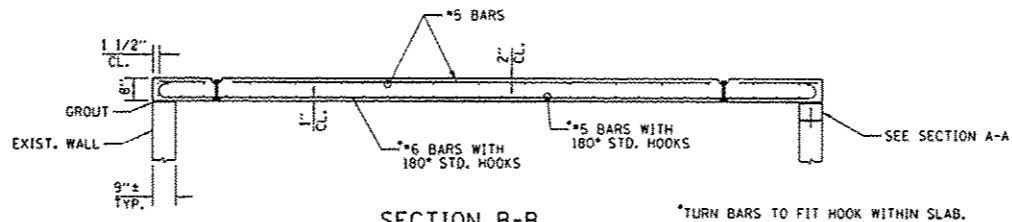
**DETAIL A**



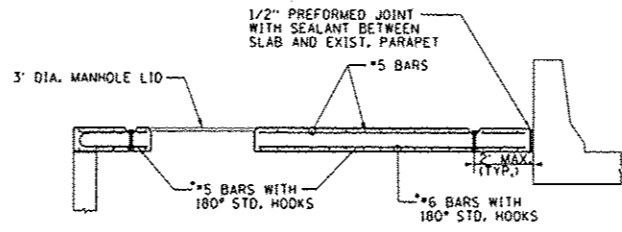
**DETAIL B**



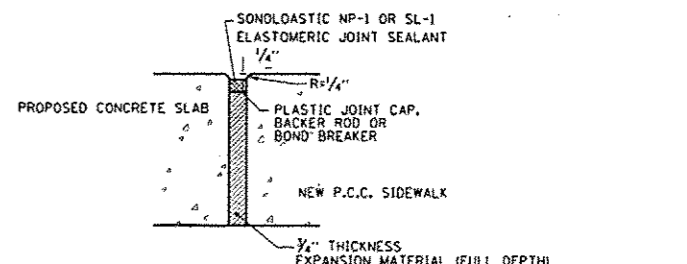
**SECTION A-A**



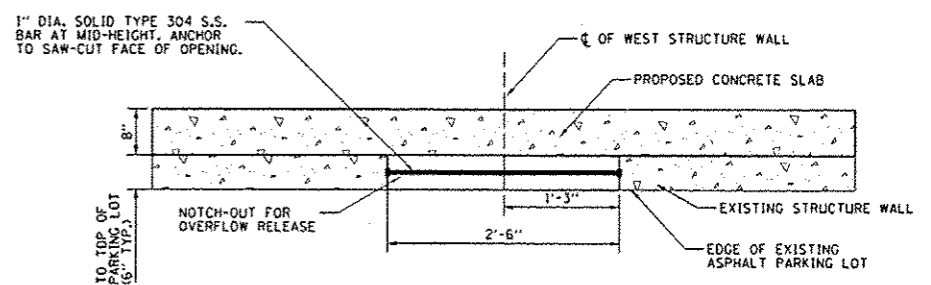
**SECTION B-B**



**SECTION C-C**



**EXPANSION JOINT BETWEEN CONCRETE SLAB AND PROPOSED SIDEWALK DETAIL**



**NOTCH-OUT IN EXISTING STRUCTURE WALL DETAIL**

**NOTES**

1. FIELD MEASURE EXISTING JUNCTION BOX TO VERIFY DIMENSIONS. EDGES OF PRE-CAST CONCRETE SLAB SHALL ALIGN WITH OUTSIDE EDGES OF JUNCTION BOX WALLS ON THREE SIDES.
2. SUBMIT SHOP DRAWINGS OF THE REINFORCEMENT BARS PREPARED IN ACCORDANCE WITH ACT 315, DETAILING OF CONCRETE REINFORCEMENT.
3. ALL REINFORCEMENT BARS SHALL BE EPOXY COATED.
4. APPLY A BED OF GROUT, 1/2" MINIMUM THICKNESS, ALONG THE TOP OF THE CUT WALLS.
5. THE TOP OF THE MANHOLE LID FRAME SHALL BE CAST FLUSH WITH THE TOP OF THE PRECAST CONCRETE SLAB.

**NOTE:**

THIS WORK WILL BE PAID FOR AT THE CONTRACT UNIT PRICE PER EACH FOR CONCRETE SLAB, WHICH PRICE SHALL INCLUDE ALL MATERIALS AND LABOR INCLUDING EXCAVATION, DEMOLITION, SAW CUTTING, PRE-CAST, CONCRETE, REINFORCEMENT BARS, GROUT, UTILITY ANCHORS, DOWEL BARS, EMBEDDED PLATES & TUBES, GALVANIZING, MANHOLE LID & FRAME, AND BACKFILLING.

**CONCRETE SLAB DETAILS**

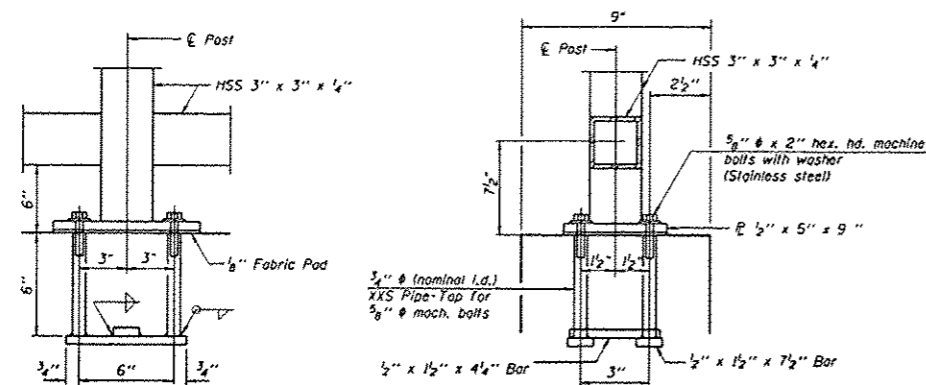
FILE NAME =	DESIGNED - S.M.M.	REVISED -
p:\10010640_Champaign - Stratton Safe School Routes\Plans\Sheets\12miscdetails.dgn	DRAWN - S.M.M.	REVISED -
PLOT DATE =	CHECKED - S.M.M.	REVISED -
3/9/2014 1:53:10 PM	DATE - 02-2014	REVISED -

STATE OF ILLINOIS  
DEPARTMENT OF TRANSPORTATION

**MISCELLANEOUS DETAILS**

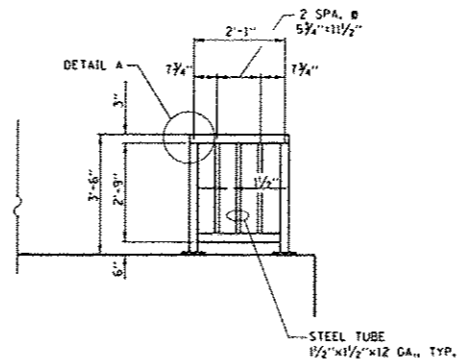
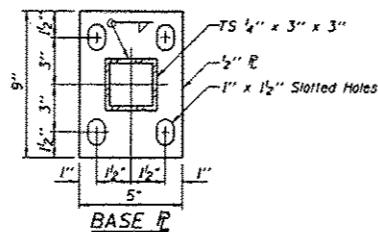
SCALE: NONE SHEET NO. 18 OF 20 SHEETS STA. TO STA.

F.A.P. RTE.	SECTION	COUNTY	TOTAL SHEETS	SHEET NO.
B06	12-00293-00-SP	CHAMPAIGN	20	18
FED. ROAD DIST. NO.		ILLINOIS FED. AID PROJECT		
		CONTRACT NO. 91486		

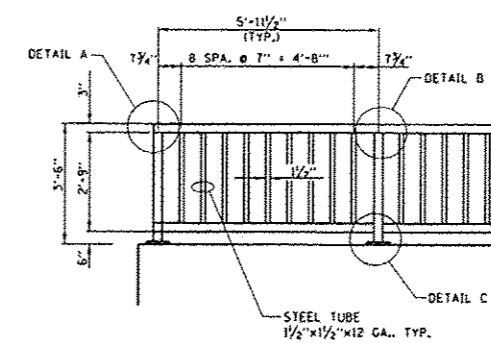


**ANCHOR BOLT DETAILS**

In lieu of the cast-in-place anchor device shown, the Contractor has the option of drilling and epoxy grouting 5/8" anchor rods. Embedment shall be according to the manufacturer's specifications.



**TYPICAL NORTH WALL RAILING**



**TYPICAL WEST WALL RAILING**

**NOTES**

Railing shall be according to Section 509 of the Standard Specifications, except as noted, and will be paid for at the Contract Unit Price per foot for Pedestrian Railing.

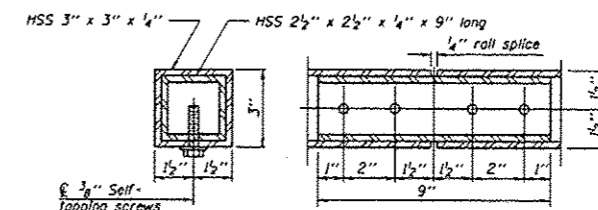
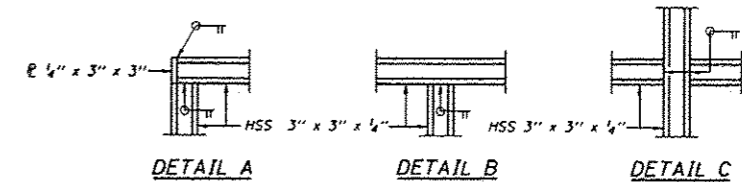
Hollow structural sections shall conform to the requirements of ASTM designation A 500, Grade B, structural steel tubing.

All other steel shapes and plates shall conform to the requirements of AASHTO M 270 Grade 36.

If the option of drilling and epoxy grouting the anchor rods is chosen, the Contractor shall use the capsule or the adhesive cartridge type anchor rods that have been previously tested and given a prior approval by the Department. The Contractor shall install these anchor rods in pre-drilled holes according to the manufacturer's recommendations and procedures. The capsule or the adhesive cartridge shall be sealed with pre-measured amounts of the adhesive chemical.

Space reinforcement to miss anchor rods.

All posts, railing, splices, anchor devices, and bent plates shall be galvanized and painted. See Special Provisions.



**RAIL SPLICE**

**PEDESTRIAN RAILING DETAIL**

FILE NAME : p:\00010640\_Champaign - Stratton Safe School Routes\Plans\Sheets\12miscdetails.dgn  
 PLOT DATE : 3/9/2014 1:53:10 PM

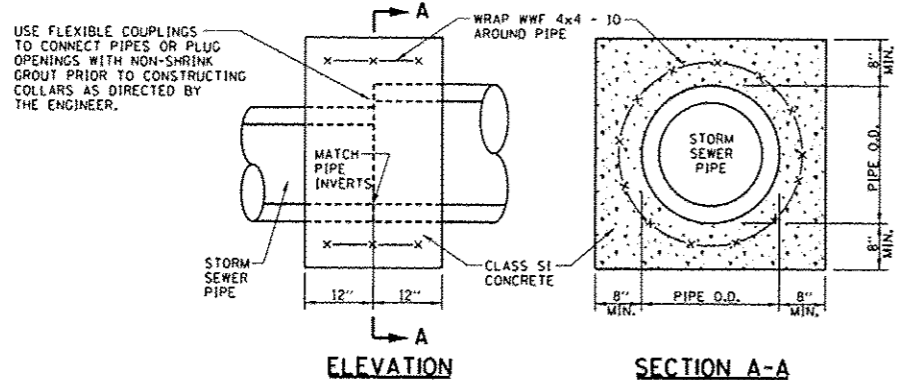
DESIGNED - S.M.M.	REVISED -
DRAWN - S.M.M.	REVISED -
CHECKED - S.M.M.	REVISED -
DATE - 02-2014	REVISED -

STATE OF ILLINOIS  
 DEPARTMENT OF TRANSPORTATION

**MISCELLANEOUS DETAILS**

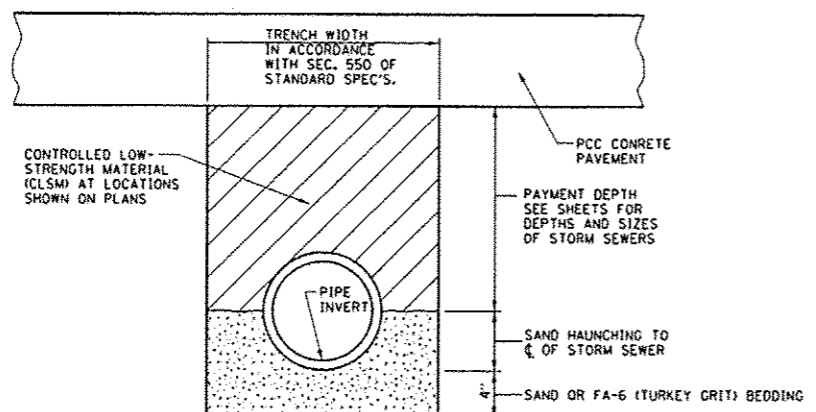
SCALE : NONE SHEET NO. 19 OF 20 SHEETS STA. TO STA.

F.A.P. RTE.	SECTION	COUNTY	TOTAL SHEETS	SHEET NO.
806	12-00293-00-SP	CHAMPAIGN	20	19
FED. ROAD DIST. NO. ILLINOIS FED. AID PROJECT			CONTRACT NO. 91486	



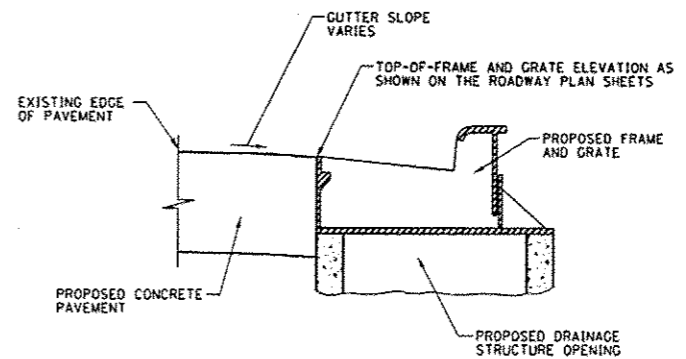
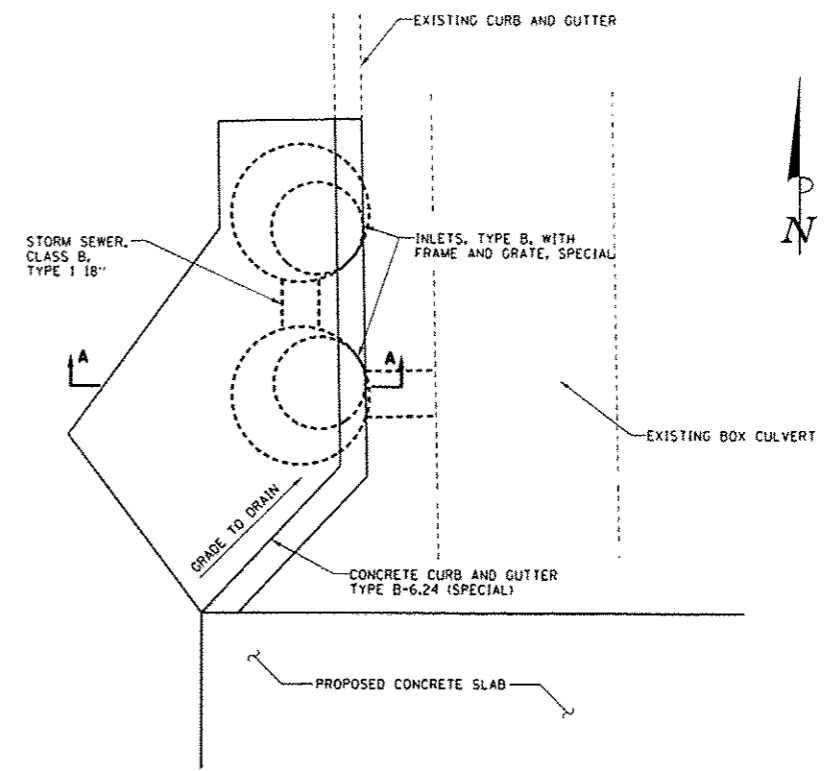
**NOTE:**  
THE CONCRETE COLLARS SHALL BE UTILIZED WHERE CONNECTING STORM SEWERS OF DIFFERENT TYPES OR DIAMETERS OR AS DIRECTED BY THE ENGINEER. THE COST OF CONSTRUCTING THE CONCRETE COLLARS WILL BE PAID FOR AT THE CONTRACT UNIT PRICE PER CUBIC YARD FOR CONCRETE COLLAR.

**CONCRETE COLLAR DETAIL**



- NOTES:**
1. THE CLSM SHALL BE PLACED IN LIFTS AS DESCRIBED IN SECTION 593 OF THE STANDARD SPECIFICATIONS.
  2. THE APPLICABLE ARTICLES OF SECTION 550 OF THE STANDARD SPECIFICATIONS SHALL APPLY FOR EXCAVATION, BEDDING AND INSTALLATION OF STORM SEWERS.
  3. THE SAND OR FA-6 BEDDING AND HAUNCHING SHALL BE CONSIDERED INCLUDED IN THE COST OF THE PIPE MATERIAL AND NO ADDITIONAL COMPENSATION WILL BE ALLOWED.
  4. THE CLSM WILL BE PAID FOR IN ACCORDANCE WITH SECTION 593 OF THE STANDARD SPECIFICATIONS FOR CLSM AND INCLUDES PAYMENT FOR THE MATERIAL AS SHOWN ON THE DETAIL. THE QUANTITIES SHOWN ON THE PLANS ARE BASED ON A DEPTH MEASURED FROM THE CENTERLINE OF THE PIPE TO THE BOTTOM LIMITS OF THE AGGREGATE BASE COURSE.

**CONTROLLED LOW-STRENGTH MATERIAL DETAIL**



**SECTION A-A**

**DRAINAGE STRUCTURE FRAME AND GRATE DETAIL FOR COMBINATION CC&G, TYPE B-6.24 (SPECIAL)**

- NOTES:**
1. SEE THE STORM SEWER STRUCTURE SCHEDULES ON THE ROADWAY PLAN SHEETS FOR THE TYPE, LOCATION, AND ELEVATION OF THE FRAMES AND GRATES.
  2. CURB HEIGHT AND GUTTER FLAG THICKNESS SHALL MATCH THE EXISTING. ANY ADDITIONAL THICKNESS SHALL BE INCLUDED IN CONCRETE CURB AND GUTTER, TYPE B-6.24 (SPECIAL) AND NO ADDITIONAL COMPENSATION WILL BE ALLOWED.

FILE NAME : p:\c0010640\_Champaign - Stratton Safe School Routes\Plans\Sheets\12miscdetails.dgn  
 PLOT DATE : 3/9/2014 1:53:11 PM

DESIGNED - S.M.M.	REVISED -
DRAWN - S.M.M.	REVISED -
CHECKED - S.M.W.	REVISED -
DATE - 02-2014	REVISED -

STATE OF ILLINOIS  
DEPARTMENT OF TRANSPORTATION

MISCELLANEOUS DETAILS

SCALE : NONE SHEET NO. 20 OF 20 SHEETS STA. TO STA.

F.A.P. RTE. 806	SECTION 12-00293-00-SP	COUNTY CHAMPAIGN	TOTAL SHEETS 20	SHEET NO. 20
FED. ROAD DIST. NO.		ILLINOIS FED. AID PROJECT		

CONTRACT NO. 91486